




# WHITE SHARK GWC-003 CYCLOPS 1080p webcam User Manual

[Home](#) » [WHITE SHARK](#) » WHITE SHARK GWC-003 CYCLOPS 1080p webcam User Manual 

# WHITE SHARK

## GWC-003

# CYCLOPS

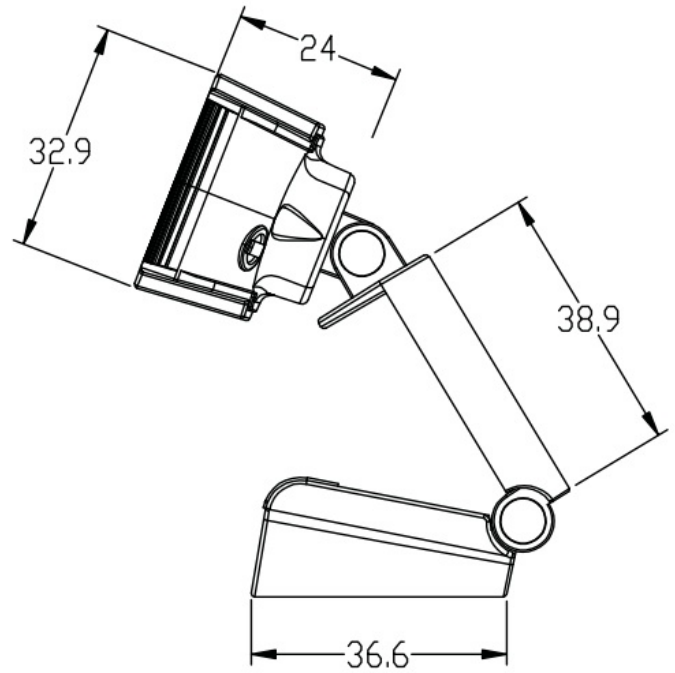
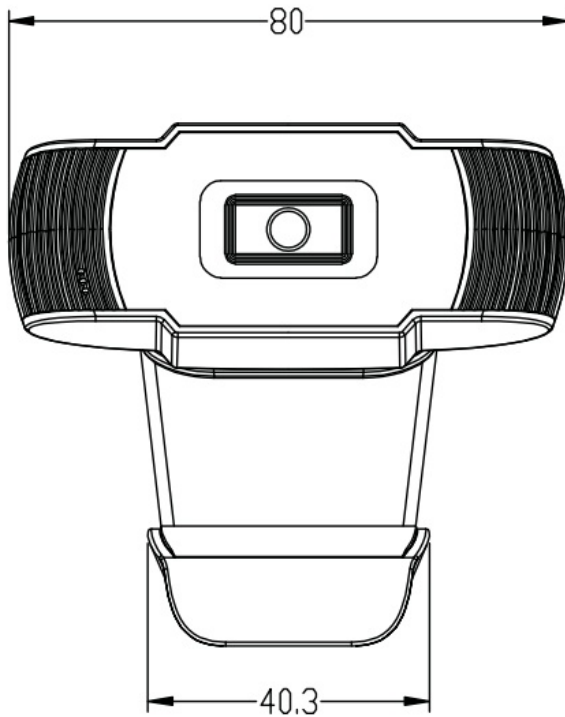
## USB WEBCAM

### User Manual

#### Contents

- [1 Features](#)
- [2 Setting up your webcam](#)
- [3 Q&A:](#)
- [4 Documents / Resources](#)
- [5 Related Posts](#)

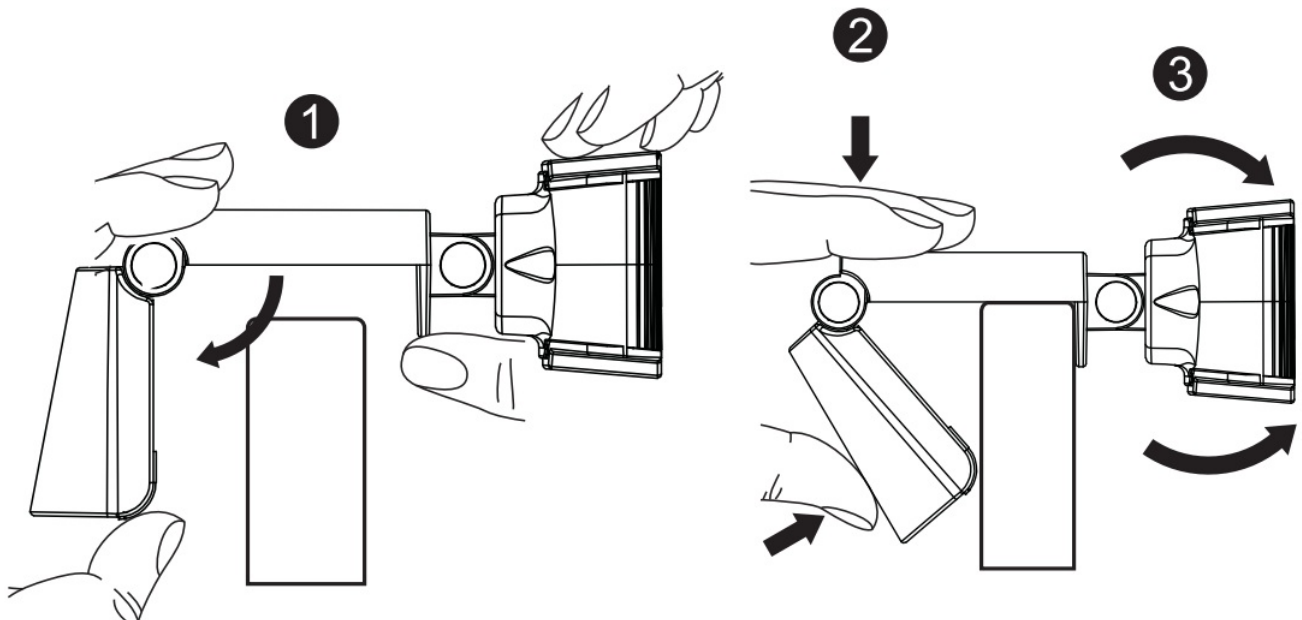
## Features



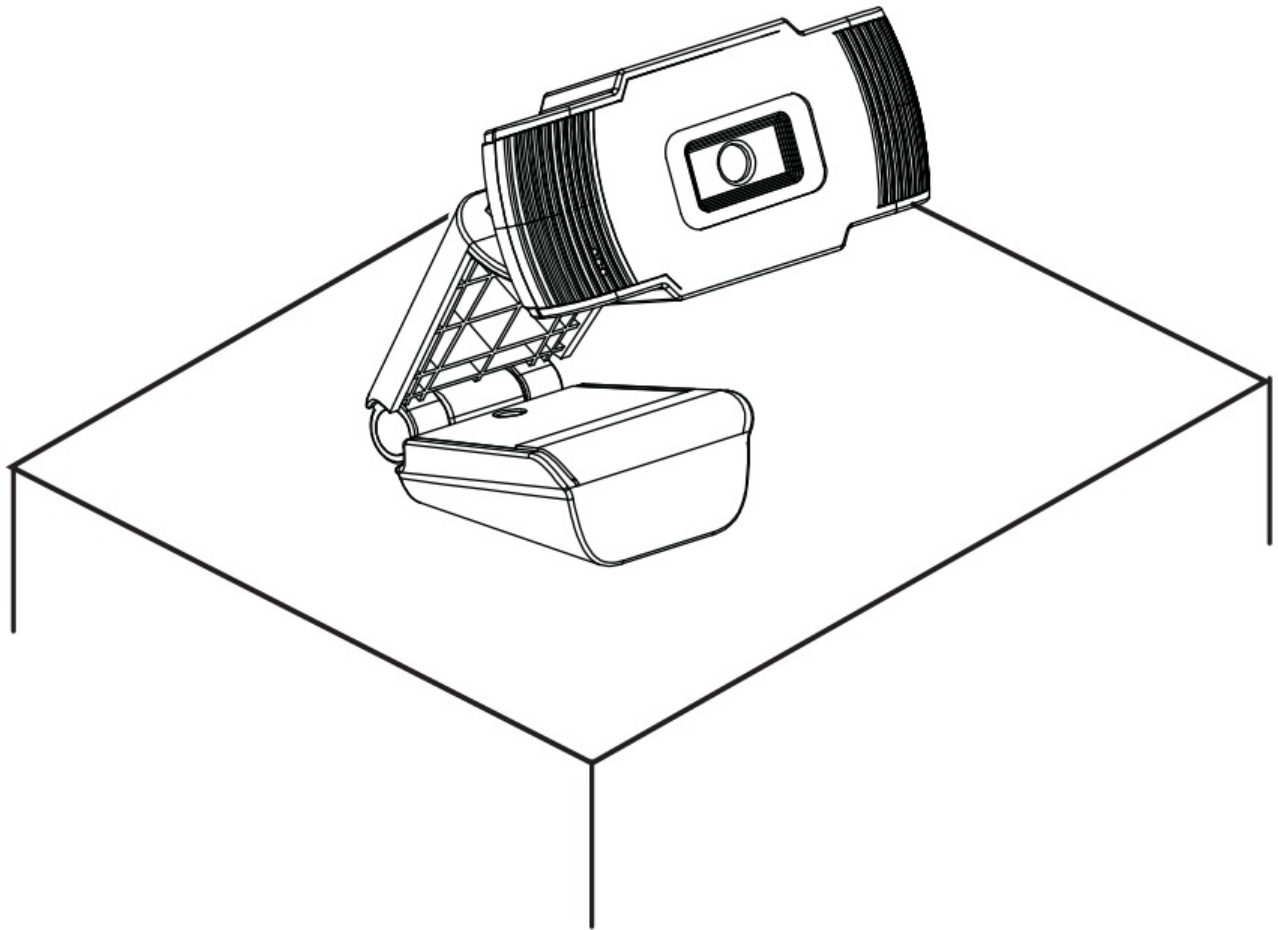
(unit:mm)

## Setting up your webcam

1. Place your webcam Designed for the way you like to make a video call, place the webcam where you want it—on the monitor or the desktop.

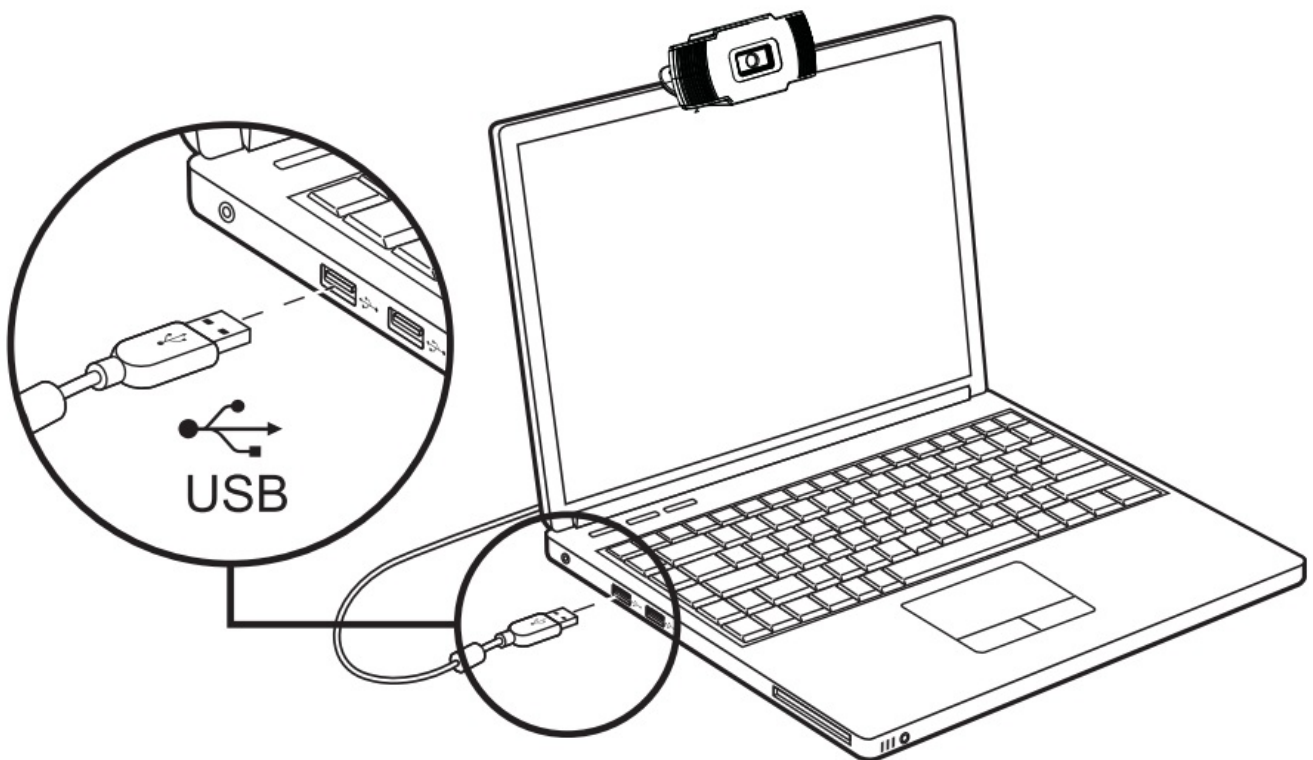


**For placement on a monitor** Grasp the webcam as shown and open clip base with your other hand. Mount the webcam, making sure the foot on the clip base is flush with the back of your monitor.



## 2. Connect your webcam

Plug your webcam into the USB interface of a PC or TV STB. Wait for about 1 minute, the webcam will install automatically.



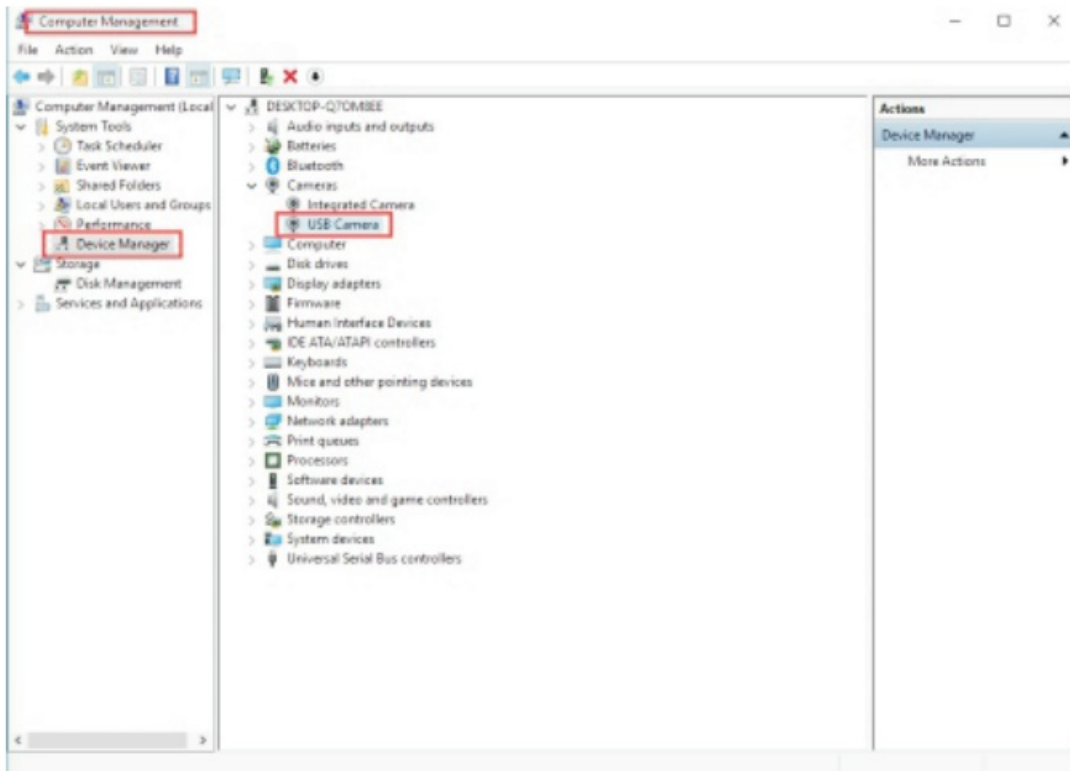
### Getting started with video calling

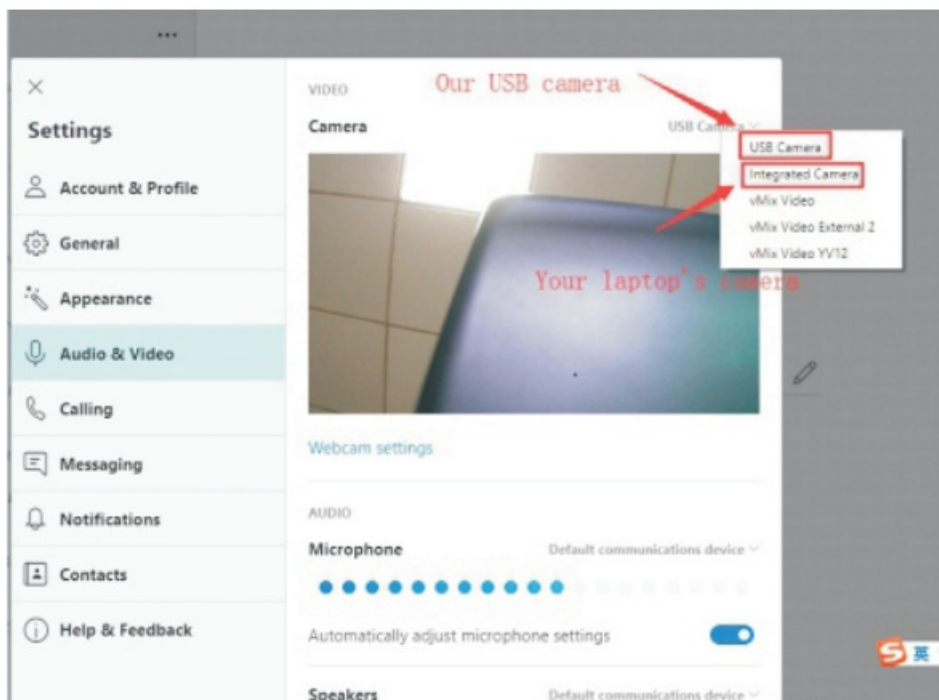
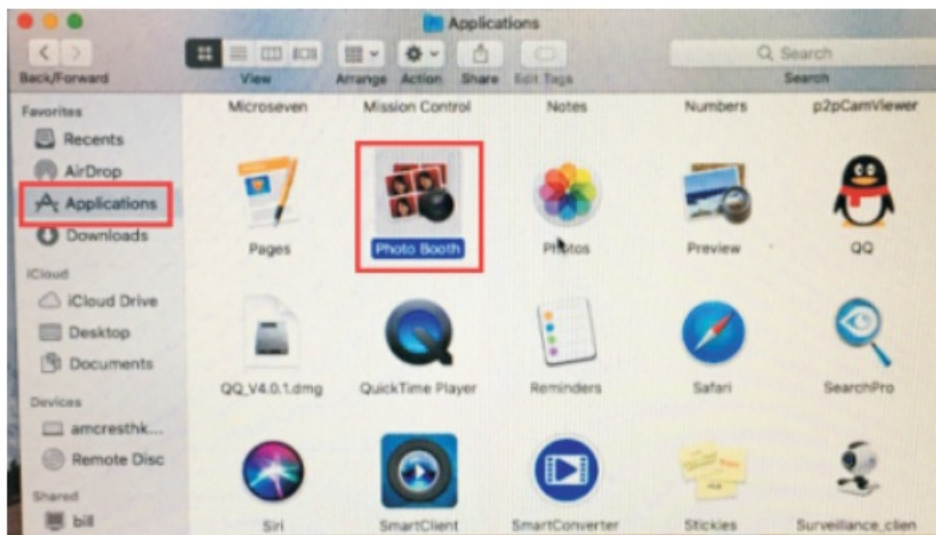
To take advantage of video calling, both you and the person you call must install a video-calling application such as Skype™, Yahoo! @Messenger, Windows Live@ Messenger, or Gmail. As well to a USB camera and video calling application, both callers need; -A computer with a speaker (or a headset) and a microphone (your

webcam has a built-in microphone);

\*A broadband Internet connection (e.g., DSL, T1, or cable); -Please check your preferred video calling application requirements. (Requirements may vary between different applications but usually, a minimum of 2Mbps upload speed is required);

## Q&A:





**Q: How do I know if my camera is recognized by the operating system?**

**A:** Connect the camera to any USB2.0/3.0 port. Once the camera is connected, it takes a few more moments before the camera is recognized. To ensure the camera has been installed correctly, check the following: UnderControl Panel>System and Security >System>Device Manager.

**Q: How do I know if my video calling application is using my webcam?**

A: All video application has an option setting to review the audio and video device. Using the video application review the followings. The Audio selection to ensure the USB2.0 camera Microphone is selected. If not change the selection to the USB2.0 camera. The Video selection to ensure the USB2.0 camera is selected. If not change the selection to the USB2.0 camera.

**Q: How to judge whether USB webcams have already been installed well on your computer?**

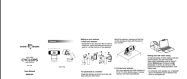
A: 1. For Windows computer: Please go to “Computer Management”—“Device Manager”—“Cameras”. See the picture below. You can check if your computer recognizes the USB webcam well.  
2. For MAC: Please go to “Applications”—“Photo Booth”. See the picture below. You can check if your computer recognizes the USB webcam well.

**Q: Why it does not work on Skype or Facebook?**

A: Normally software like Skype, and Facebook use the integrated camera by default. If you want to use a USB webcam, you need to go to video settings on the software to select video resources. Take Skype for example You need to go to “Settings” on Skype—“Audio&Video” to select a USB camera as the video resource. See the picture below.



**Documents / Resources**

	<a href="#">WHITE SHARK GWC-003 CYCLOPS 1080p webcamera</a> [pdf] User Manual GWC-003 CYCLOPS 1080p webcamera, GWC-003, CYCLOPS 1080p webcamera, 1080p web camera, webcamera
---	---