

  
WHILL  
R Series Front  
Basket



## WHILL R Series Front Basket Instruction Manual

[Home](#) » [WHILL](#) » WHILL R Series Front Basket Instruction Manual 

### Contents

- [1 WHILL R Series Front Basket](#)
- [2 WARNING](#)
- [3 WHAT IN THE BOX](#)
- [4 ASSAMALLY INSTRUCTION](#)
- [5 MORE INFORMATION](#)
- [6 Documents / Resources](#)
  - [6.1 References](#)
- [7 Related Posts](#)



### WHILL R Series Front Basket



**Model:** R series



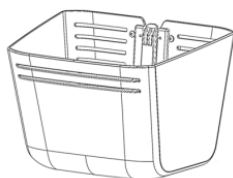
## WARNING

1. This manual is for the [Front Basket. Please follow the instructions in this manual for handling and assembly.
2. During assembly, refer to the specified torque values (Nm) and make sure to tighten the screws securely.  
Please tighten them periodically during use.
3. The load limit is 4 kg. Exceeding this load may cause deformation.
4. The cleaning method is the same as for the main body. Please refer to the main body manual for details.
5. If you have any questions, refer to the video on the top right of the cover of this manual or contact the store where you purchased it.

## WHAT IN THE BOX



①



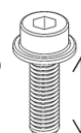
x 1

②



x 1

③

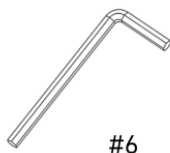


25mm

x 2

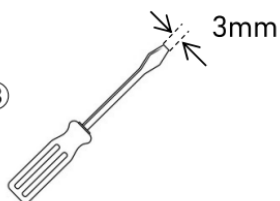


Ⓐ



#6

Ⓑ

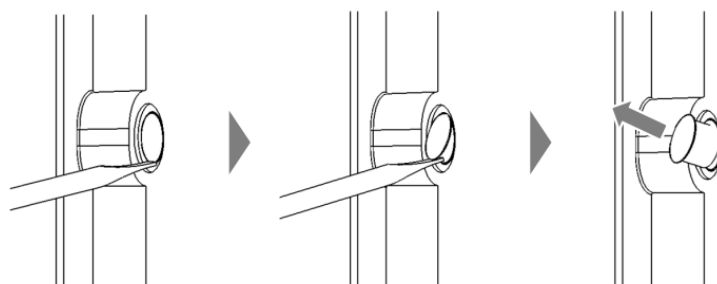
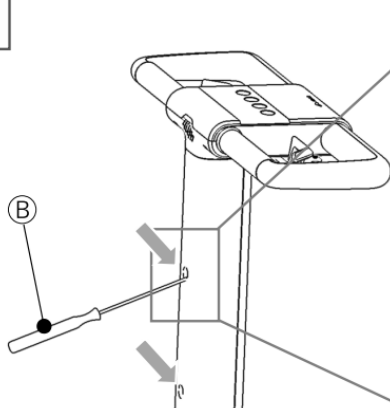


3mm



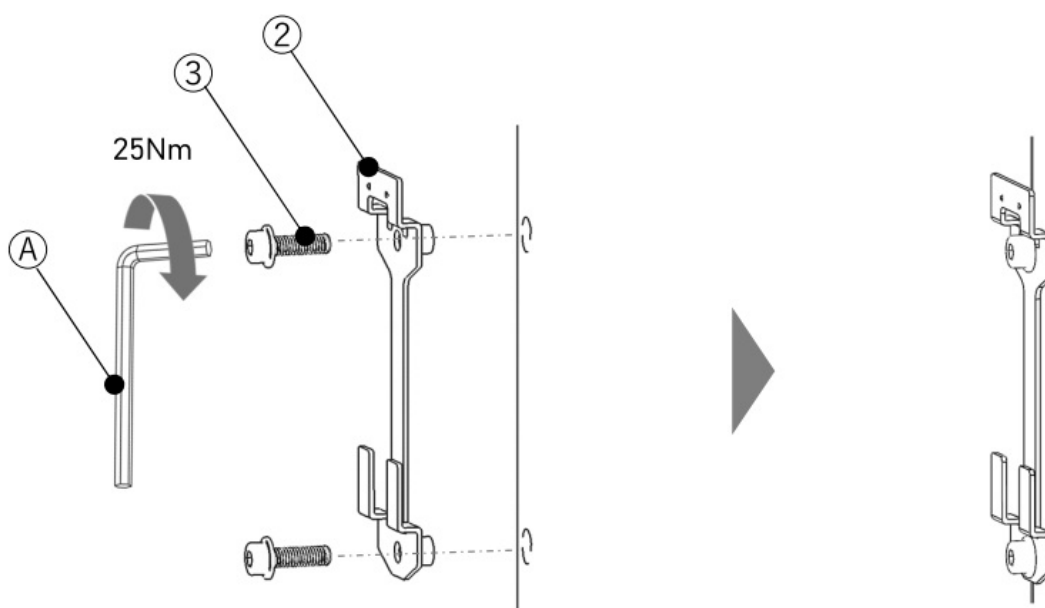
## ASSAMALLY INSTRUCTION

1

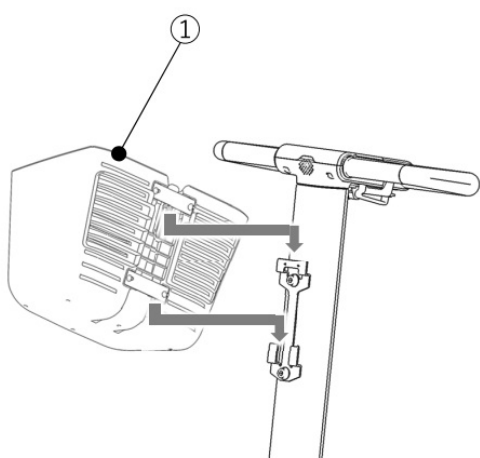


## Remove the two caps

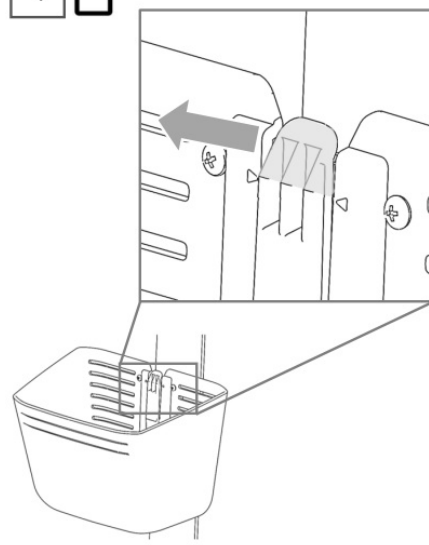
2



3



4



Align the <> marks and lock correctly. To remove the basket, pull the lever forward.



**MORE INFORMATION**

**Canada, USA**

[us.info@whillinc.com](mailto:us.info@whillinc.com). TEL: [844-699-4455](tel:844-699-4455)

**Japan**

[jp.contact@whillinc.com](mailto:jp.contact@whillinc.com) TEL: 0800-080-4338

Susgaire, Taran, Thalang India, Indonesia, Korea, Malaysia, New Zealand, Philippines,

[apac.sales@whillinc.com](mailto:apac.sales@whillinc.com) TEL: +86-0512-6856 2019

WHILL Inc : 2-1-11 Higashishinagawa, Shinagawa-ku, Tokyo 140-0002, Japan

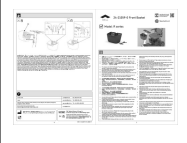
**EC REP**

CMC Medical Devices & Drugs S.L

**Horacio Lengo n18 C.P 29006 Málaga-Spain**

\*China and Asia-Pacific countries only: For more information of the local representative, please refer to the user manual of the device

**Documents / Resources**

	<p><a href="#">WHILL R Series Front Basket</a> [pdf] Instruction Manual A332-21019-G-01, 24-21059-0, R Series Front Basket, R Series, Front Basket, Basket</p>
---	--

**References**

- [User Manual](#)

[Manuals+](#), [Privacy Policy](#)

This website is an independent publication and is neither affiliated with nor endorsed by any of the trademark owners. The "Bluetooth®" word mark and logos are registered trademarks owned by Bluetooth SIG, Inc. The "Wi-Fi®" word mark and logos are registered trademarks owned by the Wi-Fi Alliance. Any use of these marks on this website does not imply any affiliation with or endorsement.