




# Wharfedale Pro SC-48 FIR Digital System Processor User Manual

[Home](#) » [Wharfedale Pro](#) » Wharfedale Pro SC-48 FIR Digital System Processor User Manual 



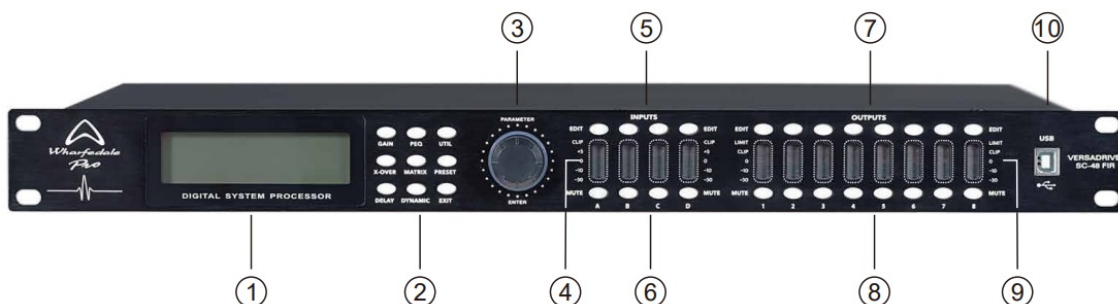
## Contents

- [1 FUNCTIONS](#)
- [2 FRONT PANEL](#)
- [3 REAR PANEL](#)
- [4 OPERATION GUIDE](#)
- [5 PC SOFTWARE](#)
- [6 SPECIFICATION](#)
- [7 REAR PANEL CONTROL PORT CONNECTIONS](#)
- [8 EXTENDED REMOTE CONTROL PROTOCOL](#)
- [9 IMPORTANT WARNINGS & SAFETY INSTRUCTIONS](#)
- [10 Documents / Resources](#)
- [11 Related Posts](#)

## FUNCTIONS

- 32-bit DSP processor. 48 kHz sampling rate. 24-bit AD/DA converters.
- Input processing includes 8PEQ, FIR phase EQ processing, Gain, Mute, Phase, Delay, and Linking.
- Output processing includes IIR and FIR Crossover filter, 9PEQ, Gain, Mute, Peak limiter, Compressor, Phase, Delay, and Linking.
- Digital input and output functions. AES/EBU input and output channels using XLR connectors.
- Adjustable PEQ Gain, Bandwidth, and Frequency for all channels. Choose between Peak, L-shelf, H-shelf, Low-cut, High-cut, ALLPASS1, and ALLPASS2.
- All input and output channels have independent phase curves and PEQ adjustment functions. Choose between ALLPASS1 / 180° curve adjust, and ALLPASS2 / 360° curve adjust.
- IIR crossover filter types can be selected: Butterworth, Linkwitz- Riley, Bessel, Slope is -6 dB/oct ~-48 dB/oct.
- All input channels have independent 512 Taps asymmetric FIR filters for system phase correction, equalization, and frequency division processing. Perfectly compatible with third-party application data import.
- All output channels have adjustable 256-1024 Taps asymmetric FIR filters for system phase correction, equalization, and frequency division processing. Perfectly compatible with third-party application data import. As well as FIR divider mode selection, frequency, type, and optional TAPS.
- Adjustable independent output compressor with threshold, soft knee, ratio, attack time, and release time parameters.  
Adjustable independent output Peak limiter functions and adjustable threshold, attack time, and release time parameters.
- The maximal delay time is 680 ms for all input/output channels.
- Parameter settings can be copied for every single channel and the channels can be linked.
- Internal signal generator (pink, white noise, and 20Hz-20KHz sine wave with adjustable amplitude).
- The front panel features high-precision level indicators, channel editing keys, mute keys, menu keys, a parameter encoding wheel, and a USB control port.
- Rear panel includes 1 x AES input connector and 1 x AES output connector plus RS232 & 485 control port.
- 20 user presets. Each preset can be saved and recalled. Device parameters can be uploaded and downloaded.
- 255 units can be linked together via ID settings.
- Password protection function for high-security applications.

## FRONT PANEL



### 1. LCD

Shows the related operation parameters and the status of the current operation.

## 2. PARAMETER EDIT KEYS

Choose all the system menus/input parameters and output parameters. Exit by pressing the "Exit" key.

## 3. PARAMETER EDIT KNOB

Edit the parameters. Confirm the data input by pressing the knob.

## 4. INPUT LEVEL INDICATORS

5-segment high precision LEDs show the status of the input channel's level.

## 5. INPUT EDIT KEYS

Press to enter into the relevant channel. Parameters will show on the LCD.

## 6. INPUT MUTE KEYS

Mute any channel by pressing and unmute by pressing again.

## 7. OUTPUT EDIT KEYS

Press to enter the relevant channel. The edit status parameter will show on the LCD.

## 8. OUTPUT MUTE KEYS

Mute the channel by pressing and unmute by pressing again.

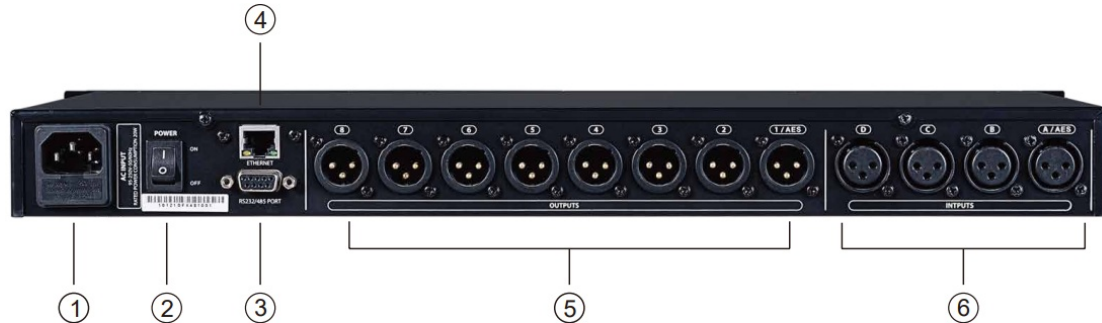
## 9. OUTPUT LEVEL INDICATORS

4-segment high precision LEDs and 1 compressor signal LED to show the status of the output level and the compressor on the current channel.

## 10. USB

Used to connect to the PC and center-control equipment.

## REAR PANEL



### 1. POWER SOCKET

### 2. POWER ON/OFF SWITCH

### 3. RS232/485 INTERFACE

Center control by rs232, cascade control by rs485.

### 4. ETHERNET CONNECT CONTROL PORT

For network control.

### 5. SIGNAL OUTPUT PORT 1-8.

### 6. SIGNAL INPUT PORT A-D.

## OPERATION GUIDE


<b>Below status after power on:</b>	
<b>SC-48 FIR Processor V1.0</b>	Power on. Displays the model and firmware version.
<b>SC-48 FIR F00 Default Preset</b>	After self-checking, displays the model and the current user preset.
<b>UTIL menu</b>	
ID Number Select ID: 1	Press the UTIL key to enter the ID status. When using cascade connection, the setting is 1-254. (If the cascade connection has more than 16 units or covers a long distance, a loaded 120-ohm resistance should be connected in parallel by the RS485 network end-point.)
<b>Manual IP Set 192. 168. 1. 101</b>	Press UTIL a second time to enter the Manual IP Set mode. The factory default address is 192.168.1.101. The IP of each machine can be set to different addresses according to the different network environment.

Input Select ANALOG	Press down a third time to enter input channel digital and analog signal select, ANALOG is an analog input. AES/EBU is digital input.
Output Select ANALOG	Press down a fourth time to enter output channel digital and analog signal selection. ANALOG is analog output, and AES/EBU is a digital output.
Unit Lock Password [1234]	Press down a fifth time to enter the password setting. You can choose all the words or numbers to set the password you want. The initial password is "1234".
In Source Select ANALOG INPUT	Press down a sixth time to enter signal source selection: pink noise, white noise, and sine wave 20 Hz-20 kHz.
Copy CH Select InA -> InB	Press down a seventh time to enter the channel copy interface: Parameter settings can be copied for every input and output channel.
LCD DISPLAY TIME 10 Second	Press down an eighth time to enter the LCD backlight time setting: maximum 200 ms.


### Preset menu interface

Load Preset F00 Default Preset	Press the "PRESET" key to enter the preset select setting. You can recall any user preset U01-U20 and factory settings F00 using the rotary encoder.
Store Preset U01 Default1 Preset	Press the "PRESET" key again to enter the save preset interface. You can save the adjusted parameters in any U01-U20 user location.

### Input channel EDIT menu interface

GAININA +0.0 dB 	Press the input channel "EDIT" key to enter the input channel function setting interface. The default option is "GAIN", the scale is -60 dB -+12 dB.
PHASE INA Normal 0	Press the "GAIN" key again to enter the PHASE and adjust the setting. The phase scale is (0°/180°).
FIORINA TAPS:512 BYPASS: ON	Press down "X-over" to enter the FIR BYPASS settings. If FIR is not required, select ON.
DELAY INA 0.000ms 0.000m 0.000ft	Press the "DELAY" key to enter the delay settings. The maximum delay is 680 ms. Can be displayed as "ms", "m" or "ft"
IN-LINK INA A: B: C: D:	Press down the "DELAY" key again to enter linking adjustment selection: If the current channel is INA, you can choose INB, INC, or IND channel to adjust parameters simultaneously and together.
FEQ:1INA G: 0.0 FREQ: 25.3 BY Q:3.00 TYPE: PEAK	Press down the "PEQ" key to enter the parameter settings. PEQ's current filter number is 8, "G" is -12 dB – +12 dB and the scale of "FREQ" is 20 Hz-20 kHz. "Q" is 0.4-128. The filter types are Peak, Low-shelf, High-shelf, Low-cut, High-cut, Allpass1, Allpass2, and Bypass (which is √).

### Output channel EDIT menu interface

<p>GAIN OUT1 +0.0 dB</p> 	<p>Press the output channel “EDIT” key to enter output channel settings. The default is “GAIN”. The scale is -60 dB – +12 dB.</p>
<p>PHASE OUT1 Normal 0</p>	<p>Press down “GAIN” again to enter the phase parameter set. The scale is 0°/180°.</p>
<p>XOVER OUT1 MODE HP: 19.6 BYPASS S IIR LP:20K15 BYPASS</p>	<p>Press down the “X-OVER” key to enter IIR crossover settings. “HP” frequency adjust range is 20 Hz-20 kHz. “LP” frequency adjust range is 20 Hz- 20 kHz. The HP/LP filter has three types and different slopes can be selected: Butterworth, Linkwitz-Riley, and Bessel. The slope is -6 dB/oct ~-48 dB/oct.</p>
<p>FIR OUT1 MODE T:512 W: SINC BY FIR H:250.0 L: 20K15</p>	<p>Select FIR mode from “X-OVER” to enter FIR settings: “T” is FIR TAPS. The range is 256-1024. “W” is the FIR curve type. “BY” is a crossover type selection. HP, LP, and band-pass can be selected. “H” is HP frequency. 150 Hz-20 kHz can be selected. “L” is LP frequency 150 Hz-20 kHz can be selected.</p>
<p>DELAY OUT1 0.000ms 0.000m 0.000ft</p>	<p>Press the “DELAY” key to enter the delay function setting: the maximum delay is 680 ms, Units can be displayed as: “ms”, “m” or “ft”.</p>
<p>OUT-LINK OUT1 1: <input type="checkbox"/> 2: <input type="checkbox"/> 3: <input type="checkbox"/> 4: <input type="checkbox"/> 5: <input type="checkbox"/> 6: <input type="checkbox"/> 7: <input type="checkbox"/> 8: <input type="checkbox"/></p>	<p>Press down “DELAY” again to enter the linking adjustment settings. If the current channel is OUT1, you can choose OUT2, OUT3, OUT4, OUT5, OUT6, OUT7, OUT8. Channel parameters can be adjusted simultaneously.</p>
<p>FEQ:1OUT1 G: 0.0FREQ: 40.2 BY Q: 3.00TYPE: PEAK <input type="checkbox"/></p>	<p>Press down the “PEQ” key to enter the PEQ settings. PEQ’s current filter number is 9. “G” is -12 dB – +12 dB. The scale of “FREQ” is 20 Hz-20 kHz. “Q” is 0.4-128. The types of filter are Peak, Low-shelf, High-shelf, Low-cut, High-cut, Allpass1, Allpass2, and Bypass (which is √).</p>
<p>MATRIX OUT1 A: <input type="checkbox"/> B: <input type="checkbox"/> C: <input type="checkbox"/> D: <input type="checkbox"/></p>	<p>Press down the “MATRIX” key to enter the matrix settings. All the output channels can freely choose one or several input signals.</p>
<p>MIXOUT1 A:+ 0.0 dB B:+ 0.0 dB C:+ 0.0 dB D:+ 0.0 dB</p>	<p>Press down “MATRIX” again to enter the matrix routing output gain settings. The factory default is 0 dB. Adjustment range is -60 dB – 0 dB.</p>
<p>COMPRESSOR IN A T +20.0 R:1.0 K0PASS A: 50 R: 500 F: 1K00</p>	<p>Press down “DYNAMIC” again to enter the COMPRESSOR settings. “T” is compression value -60 dB -+20 dB, “R” is the compression ratio 1:1, 1:10, LIMIT. “K” is soft knee 0-12 dB. “A” is attack time 10-900 ms, and “R” is release time 10-3000 ms. “F” and “PASS” are dynamic compressor settings, which are frequency and type settings ( low pass, high pass, and band-pass without “Q”. ).</p>
<p>LIMITOUT1 T:+ 20.0 R:LIMT K: 0 dB AT: 50 msmREL: 500 ms</p>	<p>Press down “DYNAMIC” again to enter the limiter settings. “T” is threshold value. -60 dB – +20 dB. “R” is a limit ratio. 1:1, 1:10, LIMT, “K” is soft knee 0-12 dB. “AT” is the attack time of 10-999 ms. “REL” is the release time adjustable between 10-3000 ms. If the output is used as a limiter, the ratio defaults to LIMIT.</p>

**Notice:** The user manual and PC software are on the enclosed CD. Due to software upgrades that may be released always get the latest version from [www.wharfedalepro.com](http://www.wharfedalepro.com)



1. Install the PC software from the CD. (or download)



2. Connect the processor to the computer by USB. After turning on the device the computer will find new hardware automatically. Then the hardware will install and you can use it.
3. Open the PC software. The PC software will find USB and connect to the device. After that, the online key turns green at the top right corner and shows "Online". You can then operate the processor with the software. Click the "Online" button then close the software interface before exiting.





PAGE 1: VOLUME CONTROL INTERFACE



## PC SOFTWARE

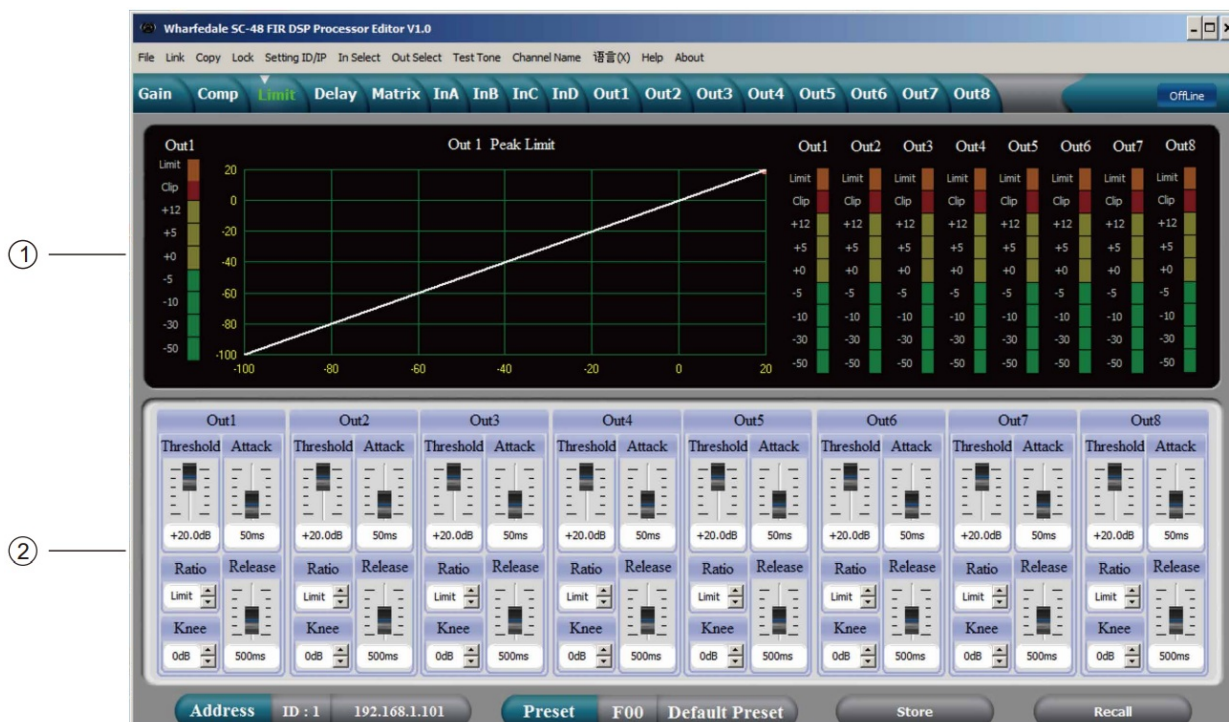
### 1. Menu





1. Shows the compression status, level indicators and status of all channels.
2. Sets the compression parameters for the output channel. The compression range is -90dB+20dB, ratio is 1:1, 1:10, LIMIT, attack time is: 1-999 ms, release time is 10-3000 ms and soft knee is 0 dB-12 dB.

### PAGE 3 : LIMITER INTERFACE



1. Shows the limiter status, level indicators, and status of all channels.
2. All output channel limiter parameters can be set the: the threshold is -90 dB to + 20 dB, the ratio is 1:1, 1:10, LIMITthe, the attack time is 1-999 ms the , release time is 10-3000 ms and the soft knee is 0 dB-12 dB. It is the peak limiter when the ratio is LIMIT.

### PAGE 4 : DELAY INTERFACE



1. Shows the delay parameter status of all channels.



- Can adjust the delay parameters of all channels. The scale is 0-680 ms, The Units of the delay can be displayed in ms, meters or feet.

## PAGE 5 : MATRIX INTERFACE



- Shows the connections of the device. You can enter and edit channels by clicking the related square. Every channel name can also be edited.
- Any output channel can choose any routing connection from input channel signal source and the level can be set independently.

## PAGE 6 : INPUT INTERFACE

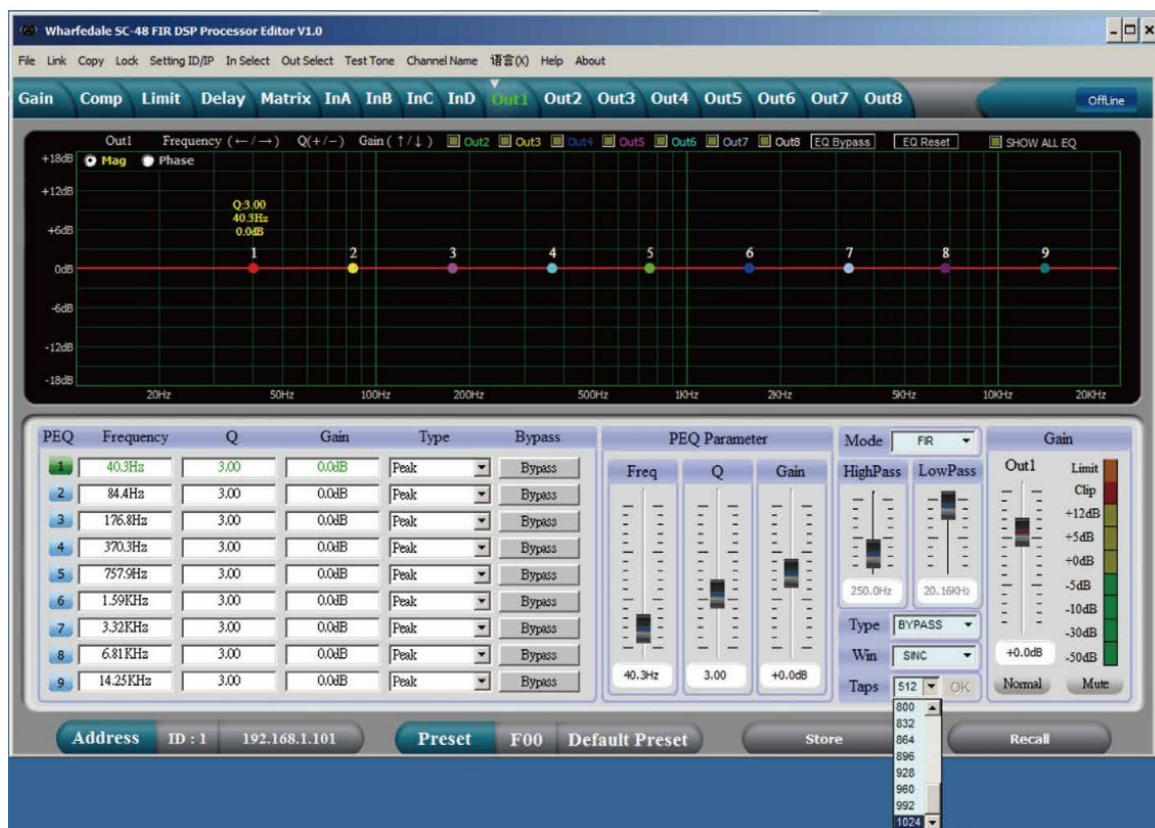


- PEQ and Low-cut & High-cut curves for all output channels could be adjusted if you select the Mag interface. The Phase curve of the current channel could be adjusted if you select the Phase interface. Besides, you can choose to show PEQ and Phase curves that are not in the current channel synchronously.

- Gain, Q value, frequency, and type of PEQ are adjustable, as well as the bypass key. PEQ type includes EQ, L-shelf, H-shelf, L-cut, H-cut, Phase 180° and Phase 360°.
- Gain, Q value, and frequency of PEQ could be adjusted by putter or controlled by pressing the UP, DOWN, LEFT, and RIGHT keys on the keyboard.
- 512Taps FIR is supported in default for the input channel. Click the "Firefile" folder to load the data. The software supports .CSV and .TXT format imports. After importing the file, the number will show on the Taps, FIR file name will show on the Name, PEQ curve diagram will immediately show the FIR curve. If Bypass FIR parameter is needed, please just click "ON". Normally 512Taps FIR is recommended. If the larger the Taps, the longer the latency will be. For example, with 1024Taps, the latency will be as much as 10ms.
- Gain, Mute, and Phase could be controlled independently in the input channel, as well as the level indicator.

## PAGE 7 : OUTPUT INTERFACE





1. PEQ and Low-cut & High-cut curves for all output channels could be adjusted if you select the Mag interface. The Phase curve of the current channel could be adjusted if you select the Phase interface. Besides, you can choose to show PEQ and Phase curves that are not in the current channel synchronously.
2. Gain, Q value, frequency, and type of PEQ are adjustable, as well as the bypass key. PEQ type includes EQ, L-shelf, H-shelf, L-cut, H-cut, Phase 180° and Phase 360°.
3. Gain, Q value, and frequency of PEQ could be adjusted by putter, or controlled by pressing the UP, DOWN, LEFT, and RIGHT keys on the keyboard.
4. The slope 20Hz-20KHz of L-cut could be adjusted, and "Butterworth", "Bessel" or "Linkwitz-Riley" could be chosen to use.
5. The slope 20Hz-20KHz of H-cut could be adjusted, and "Butterworth", "Bessel" or "Linkwitz-Riley" could be chosen to use.
6. Gain, Mute, and Phase could be controlled independently in the output channel, as well as the level indicator.

## SPECIFICATION

System Specification	Frequency Response	20 Hz~20 KHz, -0.3 dBu
	S/N Ratio	>110 dBu
	Distortion(THD)	<0. 005 at 1 KHz(0 dBu)
	Cross-talk	<100 dB below full scale
Input Section	Type	Balanced XLR
	Max. Input Level	+15 dBu
	Impedance	20 K/Stereo; 10 K/MONO
Output Section	Type	Balanced XLR
	Max. Output Level (bypass)	+20 dBu
	Impedance	<500 $\Omega$
Digital Processing	24-bit sigma-delta converters	
	96 kHz Sampling Rate	
Display	Dot matrix screen display For Parameters Setting And Function Select	
Power Supply	AC~95 V-240 V FUSE 250 VAC/2 A FAST	
Dimension (LxWxH)	48.2×24.7×4.4 cm	
Weight	2.7 kg	

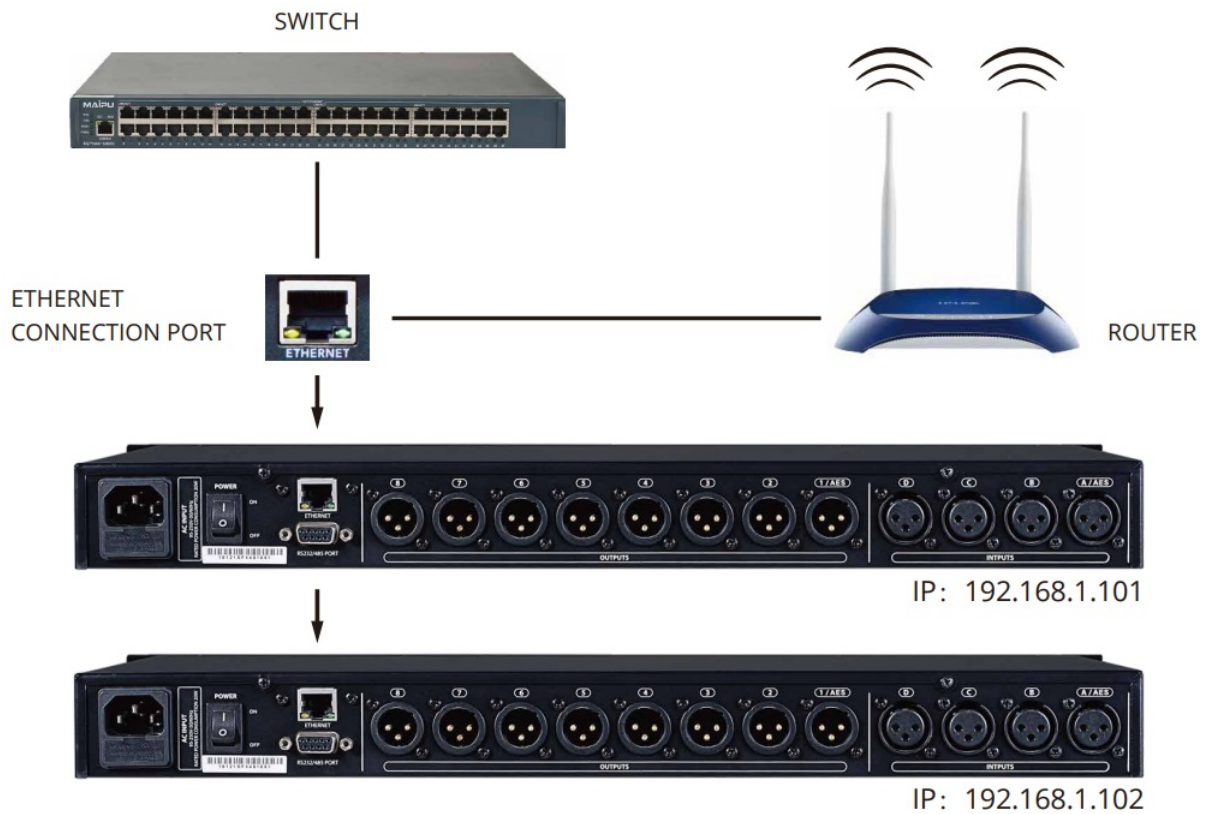
## SUPPLIED ACCESSORIES

1. One USB cord.
2. One electrical cord.
3. CD containing PC software and PDF user manual

## REAR PANEL CONTROL PORT CONNECTIONS

1. Ethernet connection port for direct connection to the computer through network cabling. Multiple devices can be connected to a switch for control, but remember to set each device's IP and ID differently. It also can also connect to wireless routers but again remember to set each device's IP and ID differently or it will fail to connect or will cause network address conflicts.





2. RS232 connection port for central system control.



3. RS485 cascade control port: Parallel connects several devices by RS485. You can choose different IDs to cascade control separately.



	0	1	2	3	4	5	6	7	8
	DLE	STX	Device Assess	CMD	In/Out	Channel	No/Yes	STX	DLE
Packet	0x7B	0x7D	1 254	0x42	In: 0 Out: 1	0 3	No:0 Yes: 1	0x7D	0x7B

### 3. Load Preset Control(0x43)

	0	1	2	3	4	5	6	7	8
	DLE	STX	Device Assess	CMD	Factory/User	Preset	0x30	STX	DLE
Packet	0x7B	0x7D	1 254	0x43	F: 0 U: 1	0 31	0	0x7D	0x7B

Example (recall user preset U00):7B7D01430100007D7B

### 4. Input Volume Control(0x44)

	0	1	2	3	4	5	6	7	8
	DLE	STX	Device Assess	CMD	Channel	HI-VOL	LO-VOL	STX	DLE
Packet	0x7B	0x7D	1 254	0x44	00 07	0x??	0x??	0x7D	0x7B

Example (InA volume +0.0dB): 7B7D01440001187D7B

### 5. Output Volume Control(0x45)

	0	1	2	3	4	5	6	7	8
	DLE	STX	Device Assess	CMD	Channel	HI-VOL	LO-VOL	STX	DLE
Packet	0x7B	0x7D	1 254	0x45	00 07	0x??	0x??	0x7D	0x7B

Example Out 2 volume – 3.0dB): 7B7D01450100FA7D7B

### 6. Get Now Gain(0x48)

	0	1	2	3	4	5	6	7	8
	DLE	STX	Device Assess	CMD	In/Out	Channel	0x30	STX	DLE
Packet	0x7B	0x7D	1 254	0x48	In: 0 Out: 1	0 3	0	0x7D	0x7B

Example (read input channel 1 gain parameter): 7B7D01480000007D7B

MCU Return: 0x00 0x90=-60dB +12dB, 0.5dB/Step

#### 7. Get Now Mute(0x49)

	0	1	2	3	4	5	6	7	8
	DLE	STX	Device Assess	CMD	In/Out	Channel	0x30	STX	DLE
Packet	0x7B	0x7D	1 254	0x49	In: 0 Out: 1	0 3	0	0x7D	0x7B

Example (read input channel 1 mute parameter): 7B7D01490000007D7B

MCU Return: 0x00 or 0x01=Un-Mute or Mute

#### 8. Get Now Preset(0x4A)

	0	1	2	3	4	5	6	7	8
	DLE	STX	Device Assess	CMD	0x30	0x30	0x30	STX	DLE
Packet	0x7B	0x7D	1 254	0x4A	0	0	0	0x7D	0x7B

Example (read preset parameter): 7B7D014A0000007D7B

MCU Return: 0x00 0x32=0: F00, 1 32:U00 U31

Communication parameter	Bits per second	115200	Stop bits	1
	Data bits	8	Step	>=20ms
	Parity	None	ID	1

## IMPORTANT WARNINGS & SAFETY INSTRUCTIONS

1. Read these instructions
2. Follow all instructions
3. Keep these instructions
4. Heed all warnings
5. Do not use this apparatus near water
6. Clean only with dry cloth.
7. Do not block any ventilation openings. Install in accordance with the manufacturer's instructions.
8. Do not install near any heat sources such as radiators, heat registers, stoves, or other apparatus (including amplifiers) that produce heat.
9. Do not defeat the safety purpose of a polarised or grounding plug. A polarised plug has two blades with one wider than the other. A grounding plug has two blades and a third grounding blade. The wide blade or the third blade is provided for your safety. If the provided plug does not fit into your outlet, consult an electrician for replacement of the obsolete outlet.
10. Protect the power cord from being walked on or pinched, particularly at the plug, receptacle and or the point

where it exits from the apparatus.

11. Only use attachments/accessories specified by the manufacturer.
12. Only use a stand, tripod, bracket or rack specified by the manufacturer, or sold with the apparatus. When a rack is used, use caution when moving the rack and apparatus combination to avoid tip-over or injury.



13. Unplug the apparatus during lightning storms or when unused for long periods of time.
14. Refer all servicing to qualified personnel. Servicing is required when the apparatus has been damaged in any way including but not limited to power supply cord or plug damage, liquid ingress, foreign objects in the chassis, exposure to rain/moisture or impact damage. In addition, the unit must be serviced when you experience any abnormal operation.
15. **CAUTION:** These servicing instructions are for use by qualified service personnel only. To reduce the risk of electric shock, do not attempt to perform any servicing other than that contained in the operating instructions unless you are qualified to do so. In addition, opening the casing will result in your warranty becoming null and void.
16. Do not install this apparatus in a confined space such as a bookcase or similar unit. Good ventilation should be maintained around the apparatus. Any vents, air-inlets or fans should not be obstructed by objects such as paper, tablecloths, curtains, etc.
17. **WARNING:** To reduce the risk of fire or electric shock, do not expose the apparatus to rain or moisture. The apparatus should not be exposed to dripping or splashing and objects filled with liquids, such as vases, should not be placed on the apparatus.
18. **WARNING:** The mains plug/appliance coupler is used as a disconnect device, the disconnect device shall remain readily operable.




**CAUTION! RISK OF ELECTRIC SHOCK DO NOT OPEN**



**ATTENTION: RISQUE DE CHOC ELECTRIQUE-NE PAS OUVRIR**

19. The lightning flash with arrowhead symbol within an equilateral triangle is intended to alert the user to the presence of non-insulated “dangerous voltage” within the product’s enclosure that may be of sufficient magnitude to constitute a risk of electric shock.
  - Warning: To reduce the risk of electric shock, do not remove the cover (or back) as there are no user-serviceable parts inside. Refer servicing to qualified personnel.
  - The exclamation point within an equilateral triangle is intended to alert the user to the presence of important operating and maintenance instructions in the literature accompanying the appliance.
20. ⊕(Protective earthing terminal) The apparatus should be connected to a mains socket outlet with a protective earthing connection.



21.  Correct Disposal of this product. This marking indicates that this product should not be disposed with other household wastes throughout the EU. To prevent possible harm to the environment or human health from uncontrolled waste disposal, recycle it responsibly to promote the sustainable reuse of material resources. To return your used device, please use local return and collection systems or contact the retailer where the product was purchased. They can take this product for safe environmentally friendly recycling.

## **WHARFEDALE PRO LIMITED WARRANTY**

Wharfedale Pro products are warranted of manufacturing or material defects for a period of one year from the

original date of purchase. In the event of malfunction, contact your authorised Wharfedale Pro dealer or distributor for information.

\*Be aware that warranty details may differ from country to country. Contact your dealer or distributor for information. These terms do not infringe your statutory rights.



*Wharfedale  
Pro*

**WHARFEDALE PROFESSIONAL**

**IAG House, 13/14 Glebe Road, Huntingdon, Cambridgeshire, PE27 7DL, UK**

[www.wharfedalepro.com](http://www.wharfedalepro.com)

**Wharfedale Professional reserves the right to alter or improve specifications without notice.**

**All rights reserved © 2021 Wharfedale Pro. Wharfedale Pro is a member of the IAG Group.**

## Documents / Resources

	<p><a href="#">Wharfedale Pro SC-48 FIR Digital System Processor</a> [pdf] User Manual SC-48 FIR Digital System Processor, SC-48 FIR, Digital System Processor, System Processor, Processor</p>
--	---

[Manuals+](#)