



Wharfedale Pro DP-N DSP Controller Software v116 Instructions

[Home](#) » [Wharfedale Pro](#) » Wharfedale Pro DP-N DSP Controller Software v116 Instructions 

Contents

- 1 [Wharfedale Pro DP-N DSP Controller Software v116](#)
- 2 [Software access](#)
- 3 [FIRMWARE UPDATE](#)
- 4 [MAIN PAGE](#)
- 5 [INPUT PAGE](#)
- 6 [OUTPUT PAGE](#)
- 7 [OUTPUT CONNECTIONS](#)
- 8 [PRESET MANAGER](#)
- 9 [DEVICE PRESET](#)
- 10 [SPEAKER CONFIG](#)
- 11 [Documents / Resources](#)
 - 11.1 [References](#)
- 12 [Related Posts](#)



Wharfedale Pro DP-N DSP Controller Software v116



Software access

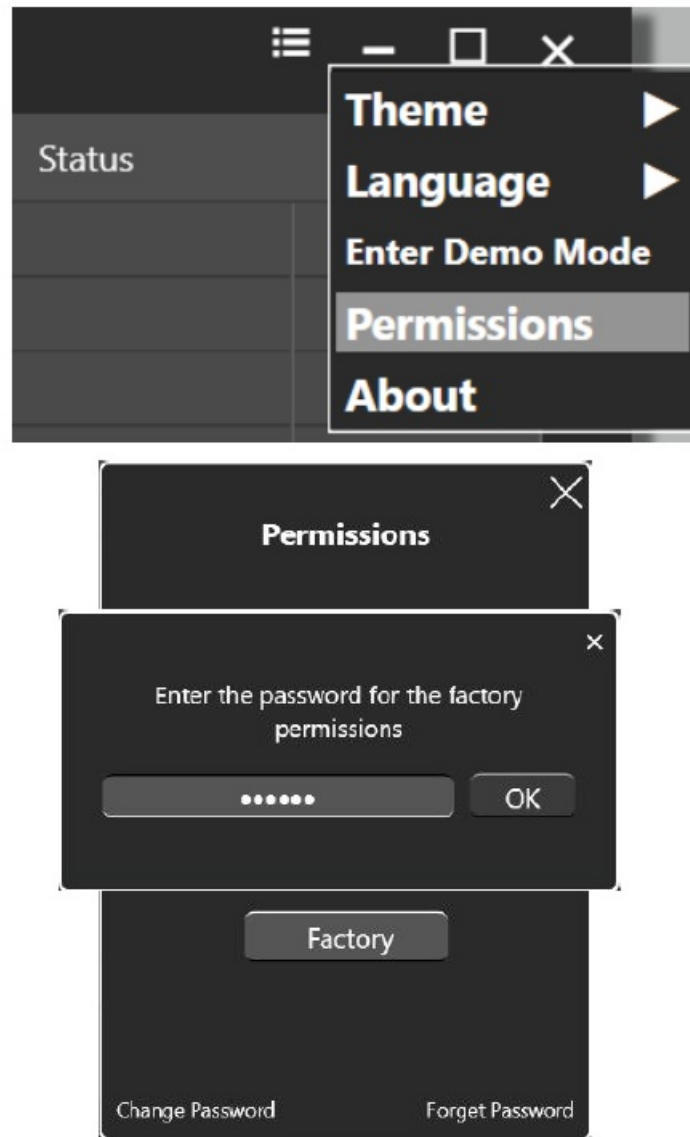
There are 2 permissions levels in DSP controller;

User: Settings and firmware update option are locked and grayed out, except main gain control, noise gate and mute functions.

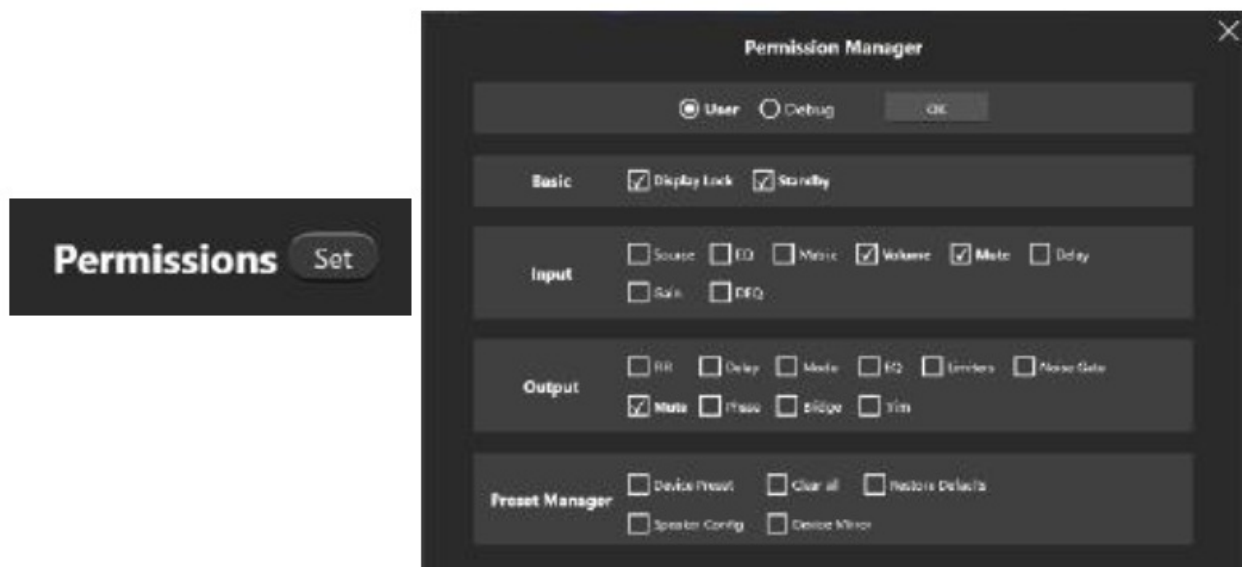
Factory: All settings are unlocked and accessible

To access amplifier settings, open the menu from the Home page and click permissions.

Next, click “Factory” and enter the default password:

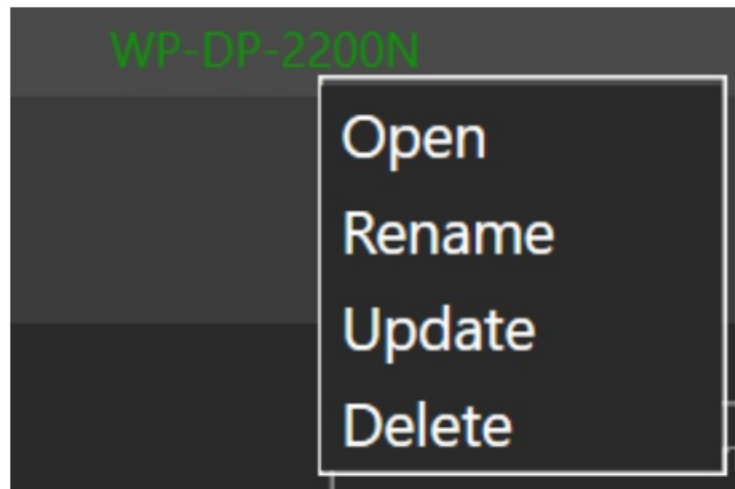


You may change this password using the option at the bottom left of the popup You may also change User level permissions using the “set” button which is accessible through Factory mode.



FIRMWARE UPDATE

Once in Factory Mode, you may right click an amplifier and select “Update” to update the firmware. Please refer to the instructions included in the v116 DSP controller download file. Heed all warnings, and follow the steps exactly. IT IS ESSENTIAL TO UPDATE TO LATEST AMPLIFIER FIRMWARE TO ACCESS BUG FIXES AND SOFTWARE UPDATE FEATURES



MAIN PAGE

In the MAIN tab the focus is on the total Gain of each channel. We must have 35 dB Gain, as we use this to set the limiters in our preset library. These settings do not recall with presets and must be manually set.

- DP-4035F(N) +18 dB
- DP-4065F(N) +16 dB
- DP-4100F(N) +14 dB
- DP-2200F(N) +11 dB

SEN is automatically recalculated accordingly.



INPUT PAGE

A) Input source and settings.

For DP-N models, the “Set” function in the INPUT section allows the Analog Input to be used as redundant audio

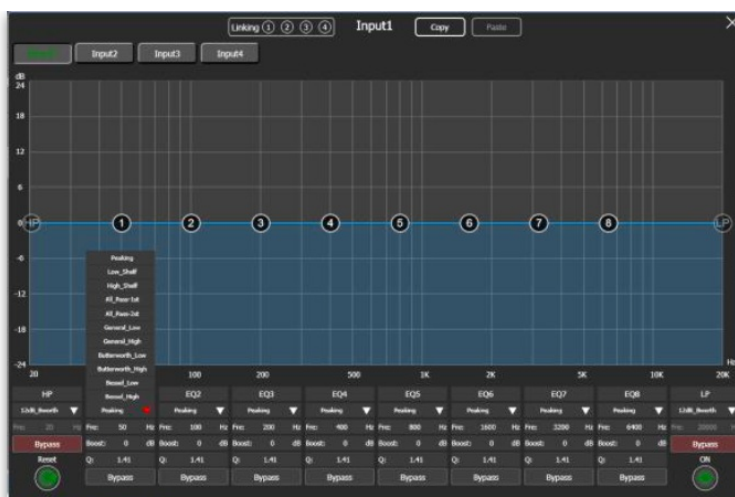
signal.

Note: An appropriate Level and Delay must be used to avoid any audible Level and timing variation differences when the “Auto” function is enabled. DP-N series only.

Tip! You may right click on an input matrix value to have text input option.



When the EQ's are linked across different channels there is a graphical reminder. It becomes a grey/blue colour.



B) Input EQ

8 parametric EQ, HP and LP filters are available.

When the EQ's are linked across different channels there is a graphical reminder. It becomes a grey/blue colour.

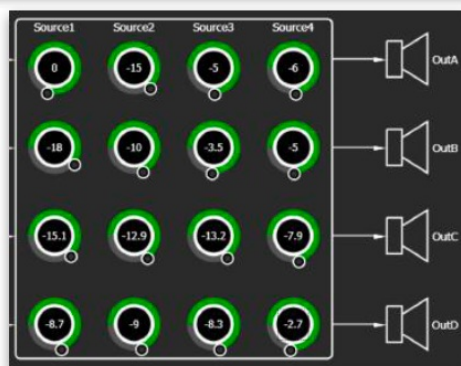


For both DP-N and DP-F models, the 4 x 4 matrix mixer can also be used.

This allows the same input signal to be used across 4 channels. This is very useful to SUM in mono any Stereo source or to manage a different MIX to a different location.

WARNING: do not exceed the maximum +21 dBu input level.

OUTPUT PAGE





In the Output section you have all the settings to optimise your system performance:

- A) FIR: 512 taps @ 48 KHz FIR filter from third party software can be loaded.
- B) EQ: 5 parametric EQ, HP and LP filters are available.
- C) Trim: adjustable Gain control up to +18 dB
- D) Delay: up to 20 ms
- E) Phase: 180 degrees polarity flip.
- F) Limiter (RMS and PEAK)
- G) Mode: Lo-Z, 70 V, 100 V (DP-2200N and F)
- H) Noise Gate
- I) Mute

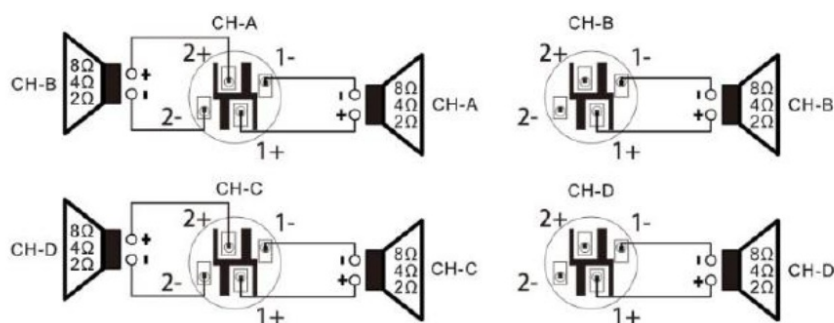


When the EQ's are linked across different channels there is a graphical reminder. It becomes a grey/blue colour.

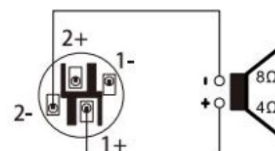


OUTPUT CONNECTIONS

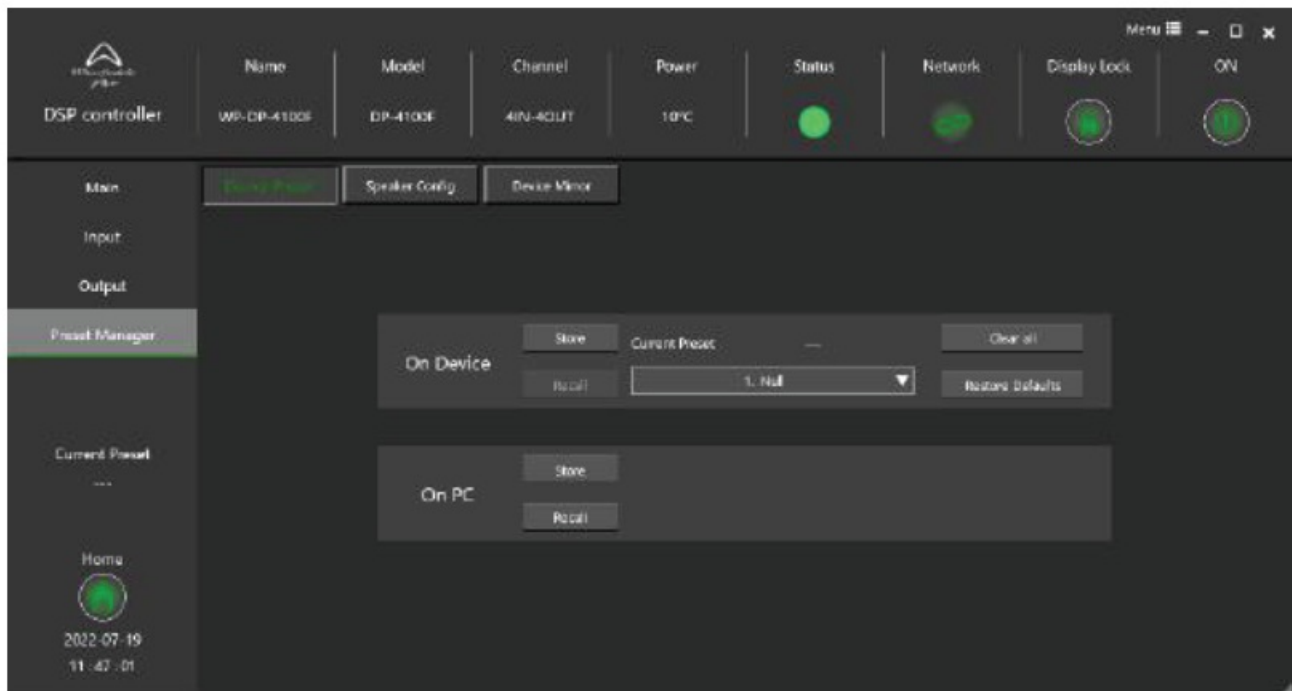
DEFAULT MODE



BRIDGE MODE



PRESET MANAGER



DEVICE PRESET

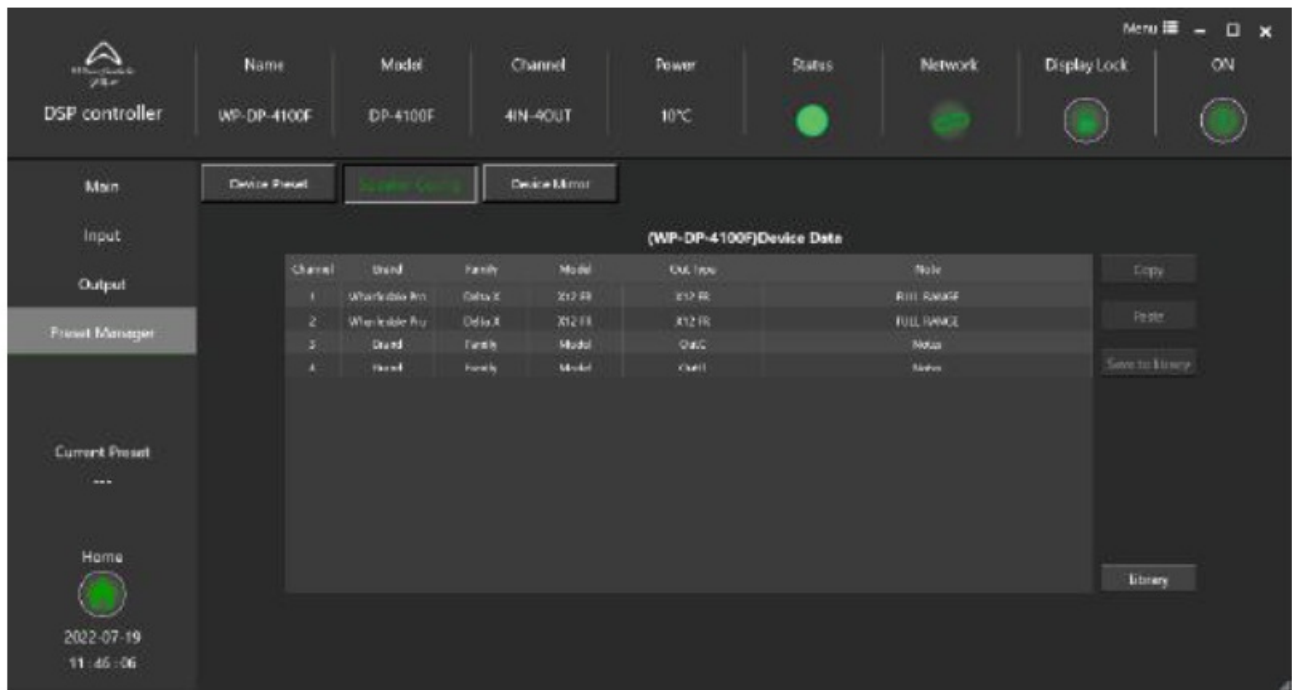
This gives access to save and recall full device presets to either the device (recallable from front panel) or PC (stored as .sd file) All channel settings will be saved, with the exception of the Main page gain control values, these must be set as instructed on page 2 of this guide.

SPEAKER CONFIG

This gives access to Save to Library, Copy and Paste a single channel preset.

System configuration for....

- a) Brand (Speaker Brand)
- b) Family (Speaker Family or Series)
- c) Model (Speaker Model) and typology (e.g. FR, HPF 100 Hz, LF, LMF, MHF, HF, etc.)
- d) Out Type (i.e. FR for full range, HPF for high pass filter, HF for high frequency, LF for low frequency or SUB for Subwoofer)

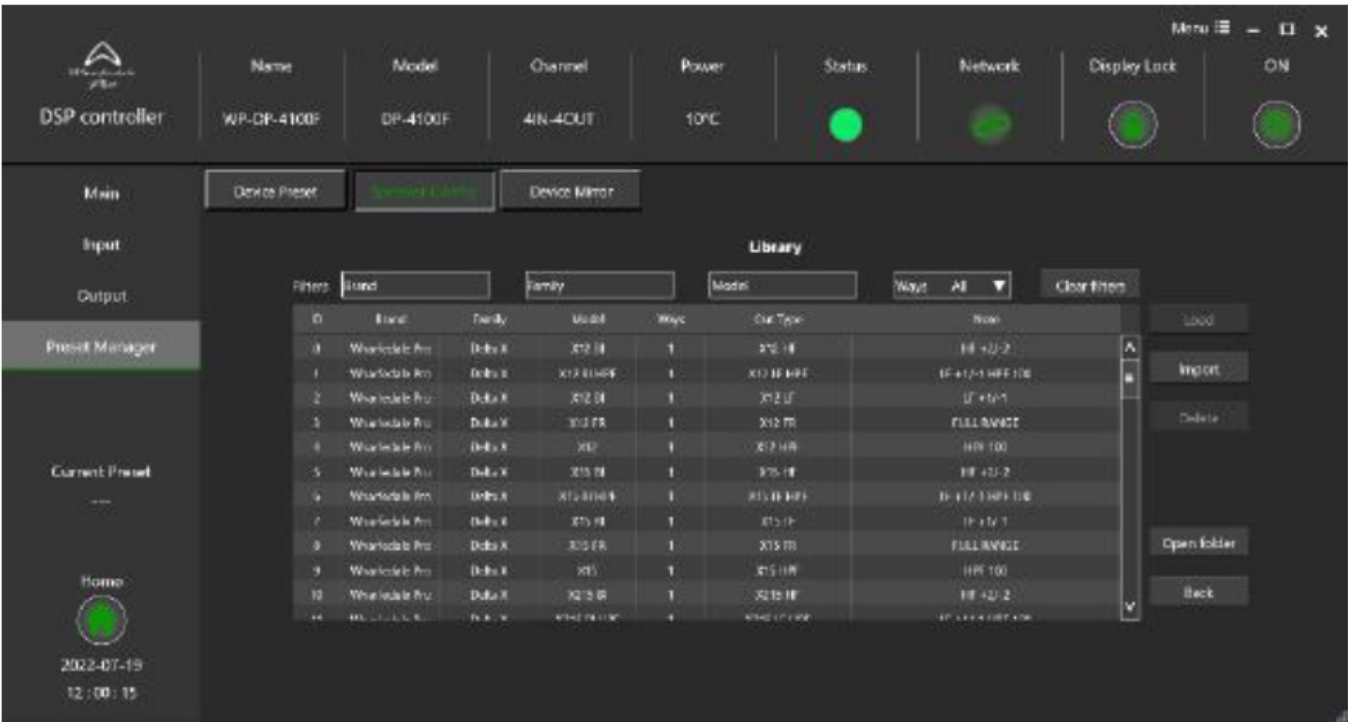


TIP! It makes sense to choose a useful name here, as this field will appear in the Main, input and output views as a channel label



Library will access a separate menu with the local preset library, any presets imported into DSP controller will show here. You can use the filters to search for specific names under each column.

- **NOTE:** Currently all presets are 1 way.
- **Load:** use to load preset into an amplifier channel
- **Import:** import presets from PC to the Library
- **Delete:** Delete a preset from the library
- **Open Folder:** opens the read only local library folder on your PC
- **Back:** Return to the amplifier speaker config page



WWW.WHARFEDALEPRO.COM

Documents / Resources

[Wharfedale Pro DP-N DSP Controller Software v116 \[pdf\] Instructions](#)
DP-N, DP-F Series, DSP Controller Software v116, DSP Controller, Controller Software v116, Software v116, Software

References

- [Downloads – Wharfedale Pro](#)

[Manuals+](#).