



WhalesBot A7 Pro Controller Coding Robot for Kids User Guide

[Home](#) » [WhalesBot](#) » WhalesBot A7 Pro Controller Coding Robot for Kids User Guide 

Contents

- 1 WhalesBot A7 Pro Controller Coding Robot for Kids
- 2 Controller
- 3 Where to Install a Sensor
- 4 SENSORS
- 5 Actuators
- 6 Forward Motor
- 7 Adjustable-speed Motor
- 8 LOGICAL BLOCKS
- 9 Remote Control
- 10 Bluetooth Pairing
- 11 Sample Project
- 12 Frequently Asked Questions
- 13 Warning and Maintenance
- 14 FCC Warning
- 15 Documents / Resources
 - 15.1 References
- 16 Related Posts





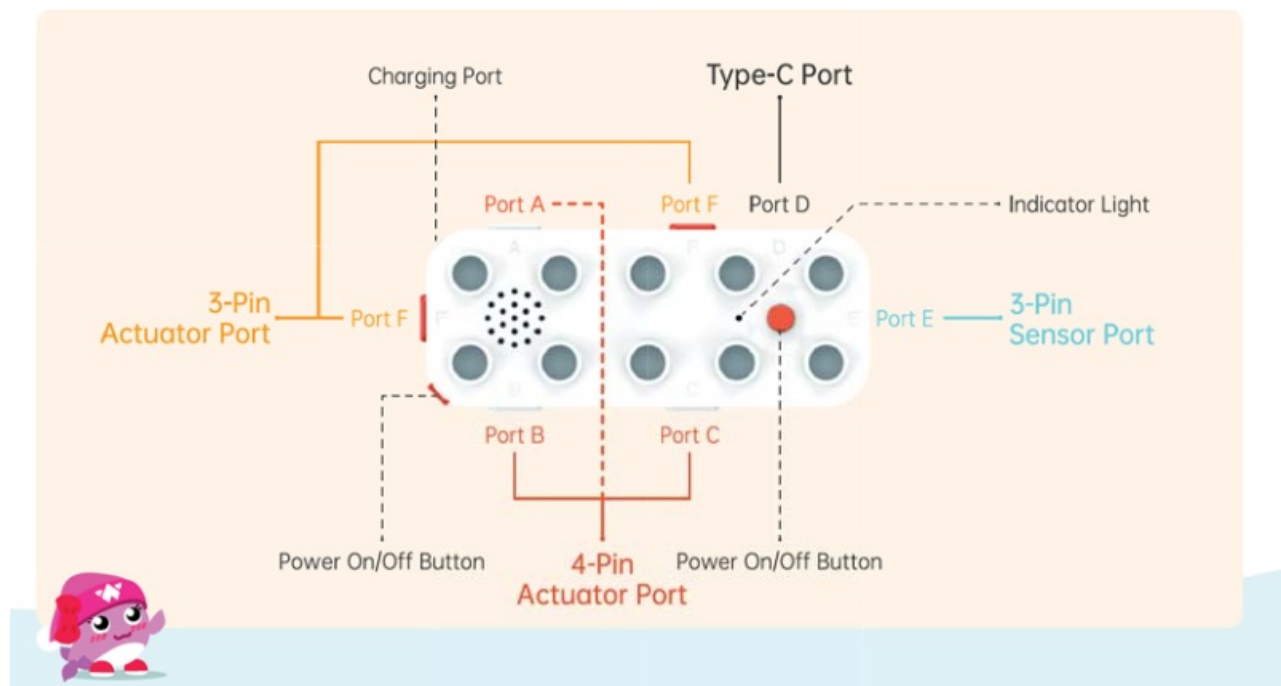
Controller Pro User Guide

- WhalesBot Technology (Shanghai) Co., Ltd.
- Web: <https://www.whalesbot.ai>
- Email: service@whalesbot.com
- Tel: +008621-33585660 3/F, Building 19, No. 60, Zhonghui Road, Minhang District, Shanghai

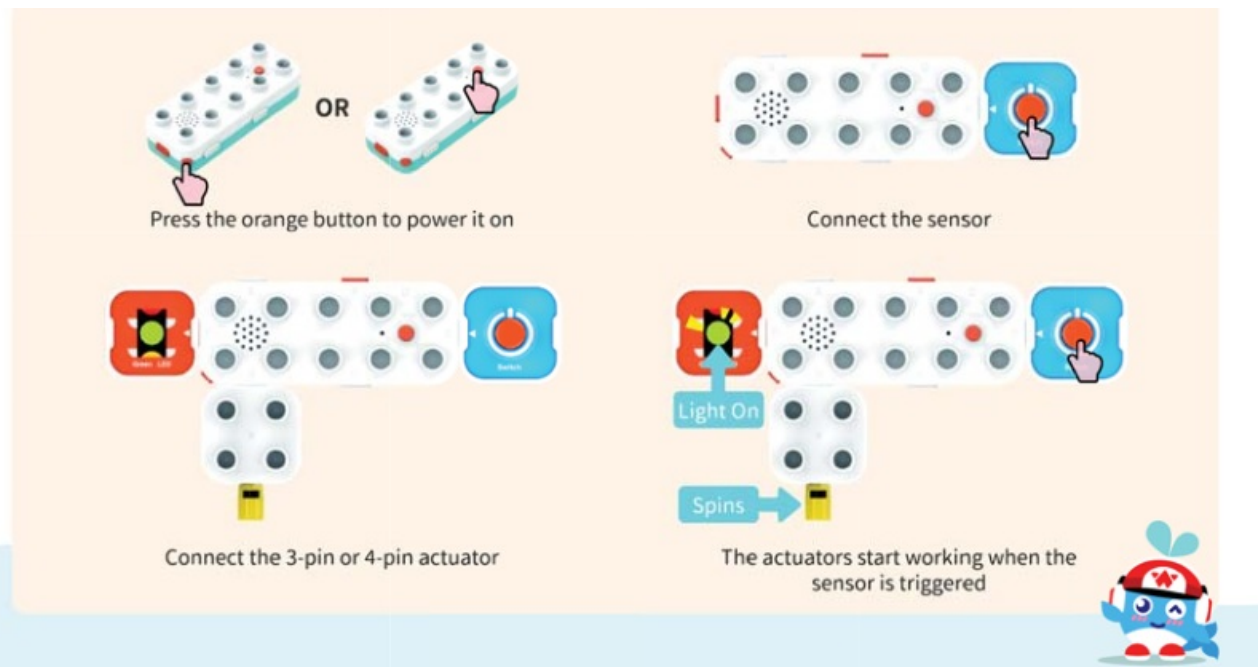
Visit <https://www.whalesbot.ai> for more information

Controller

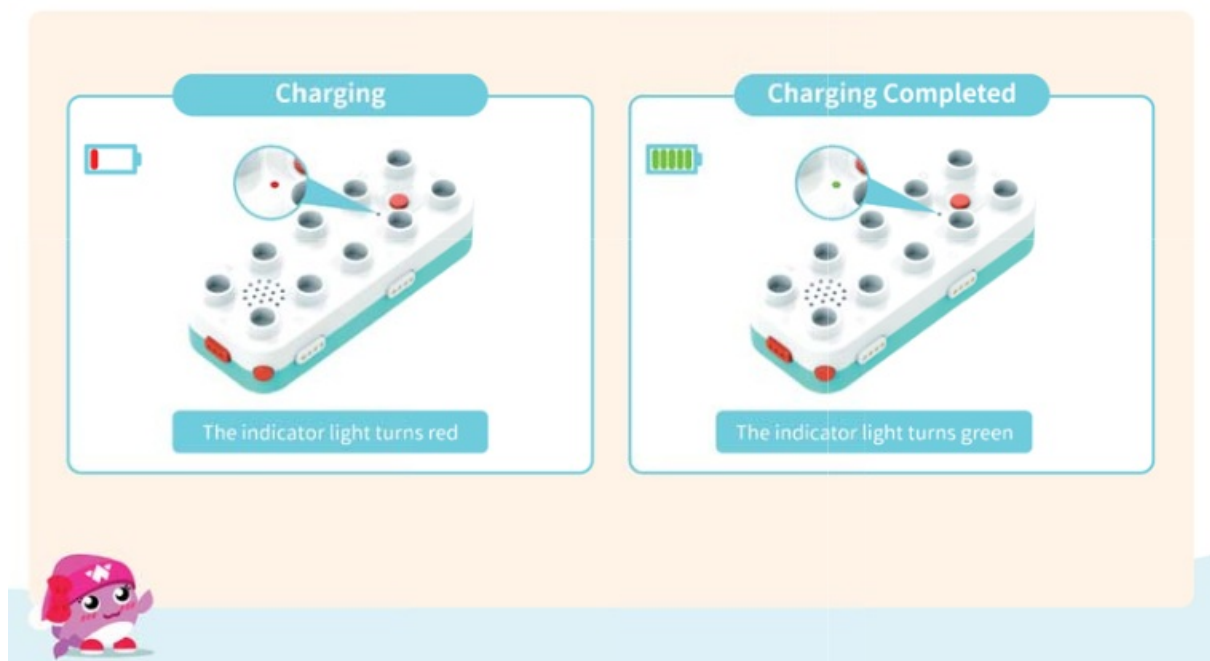
- Ports



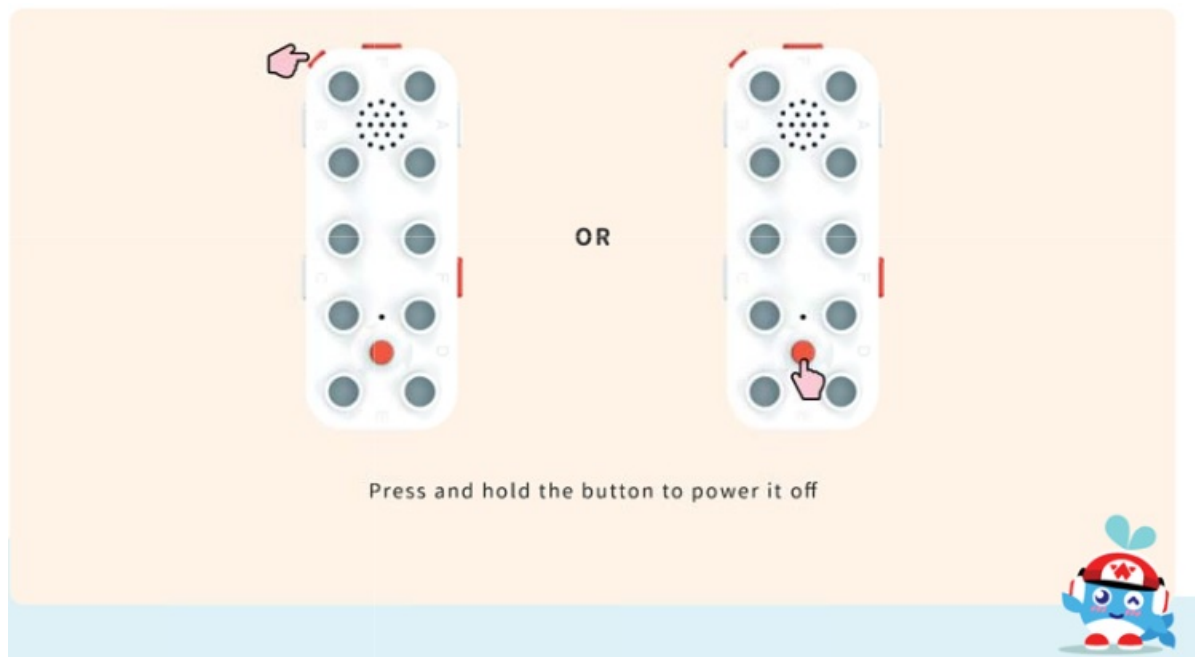
- Getting Started



- Charging

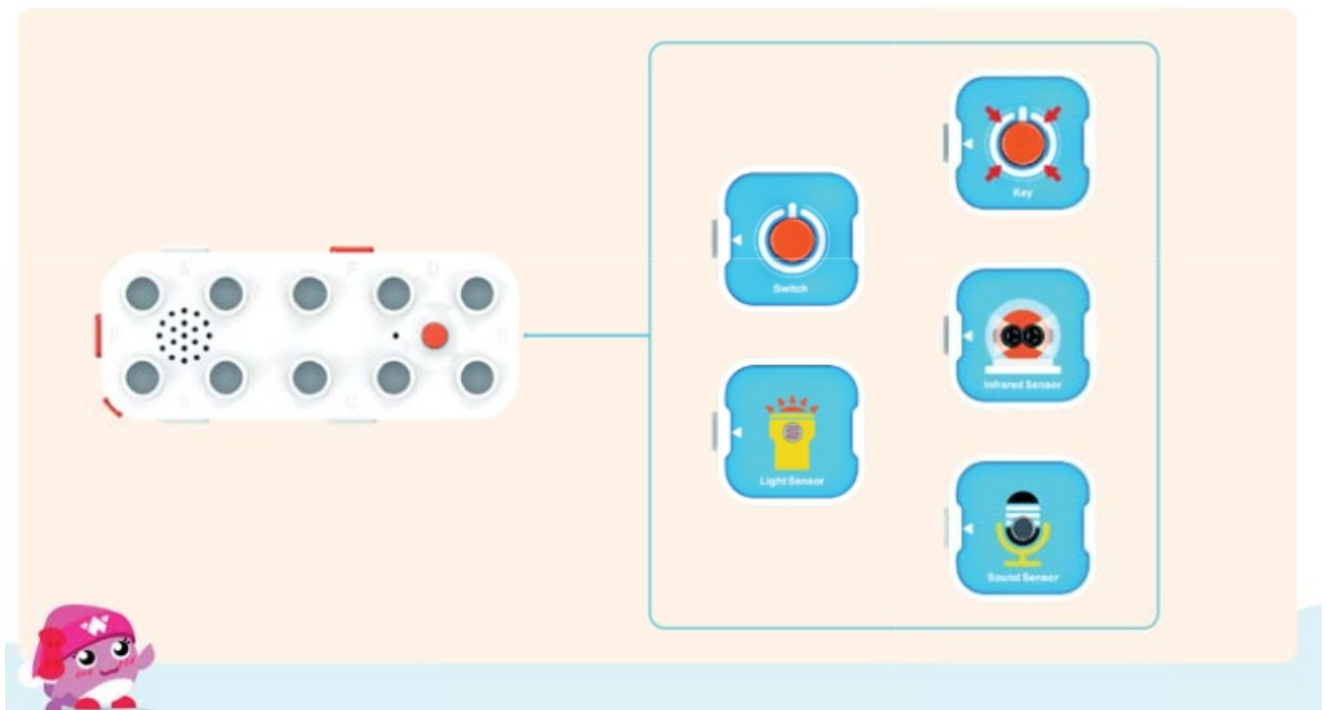


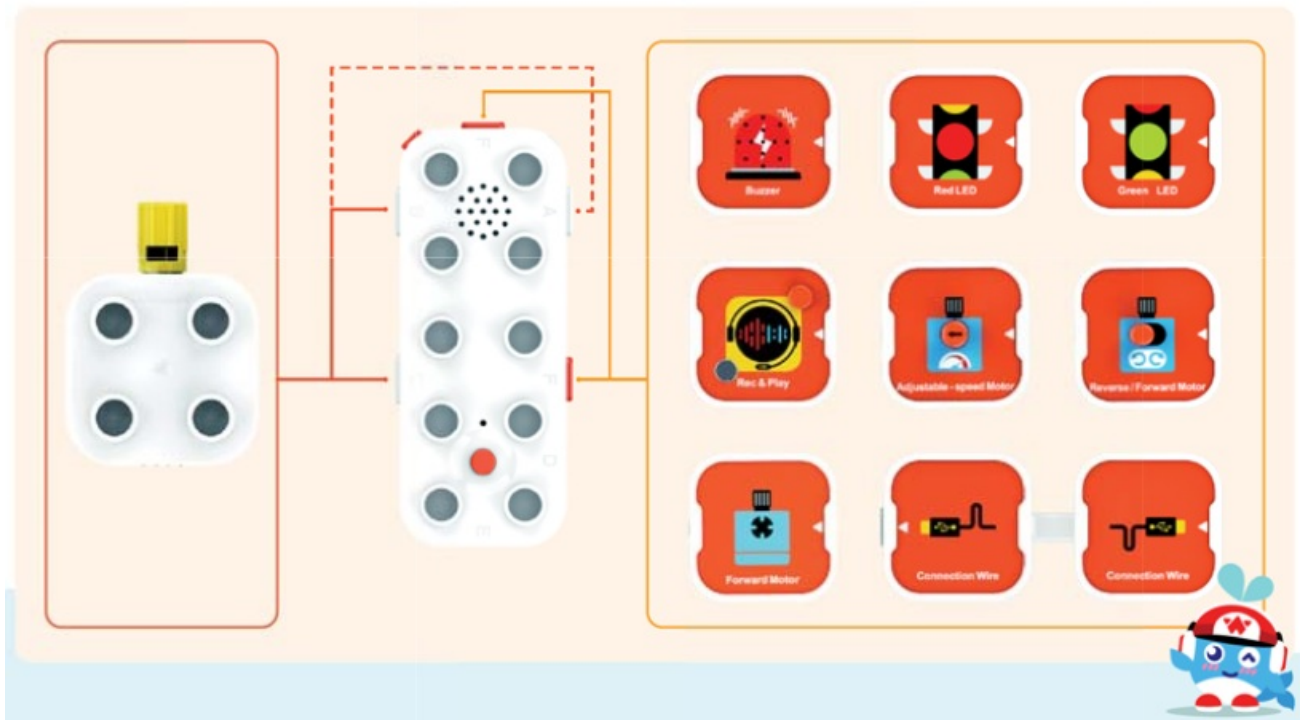
- Powering Off



Where to Install a Sensor

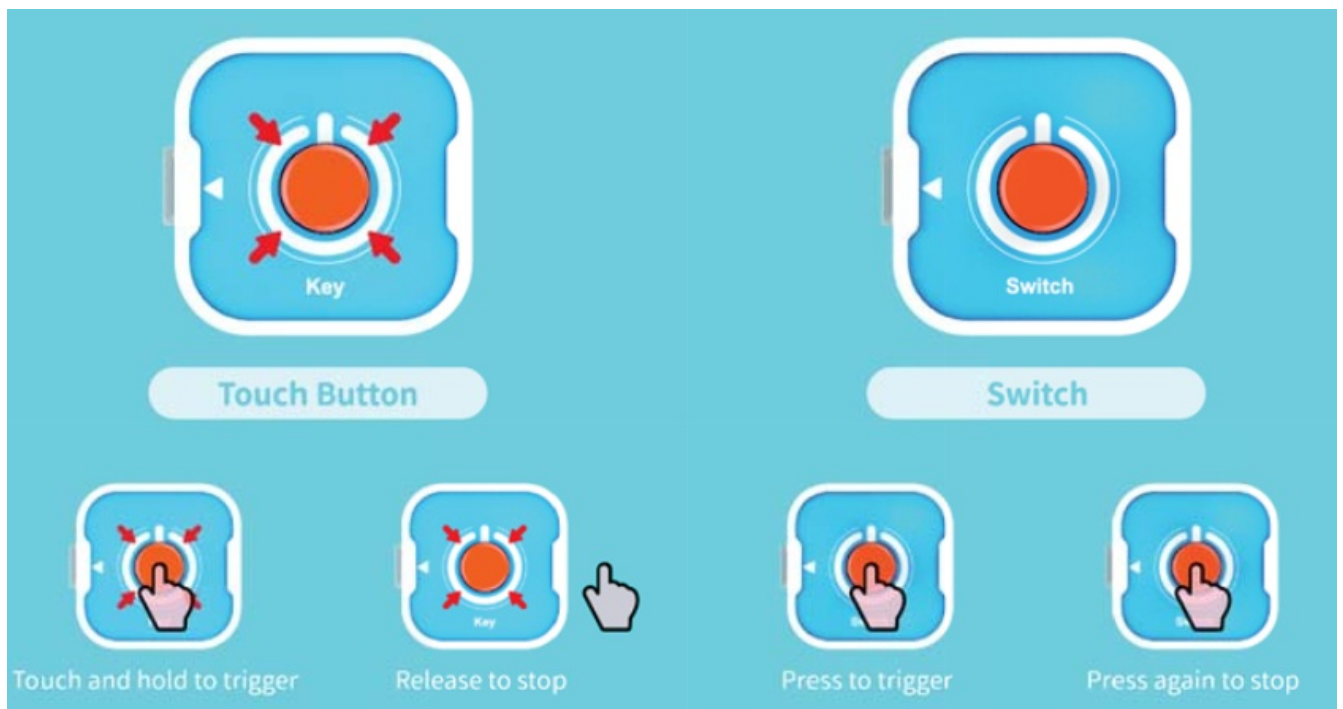
•

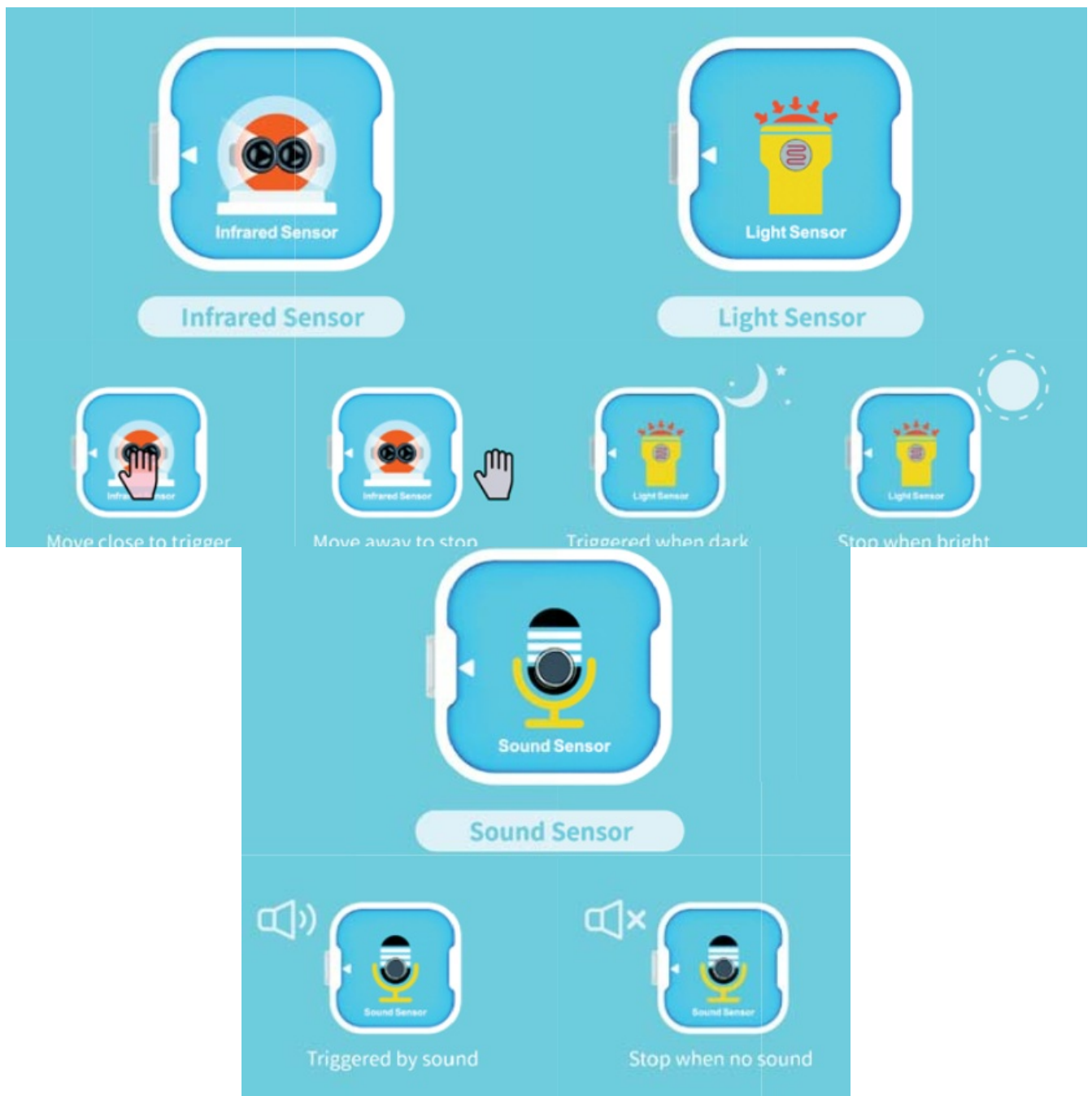




SENSORS

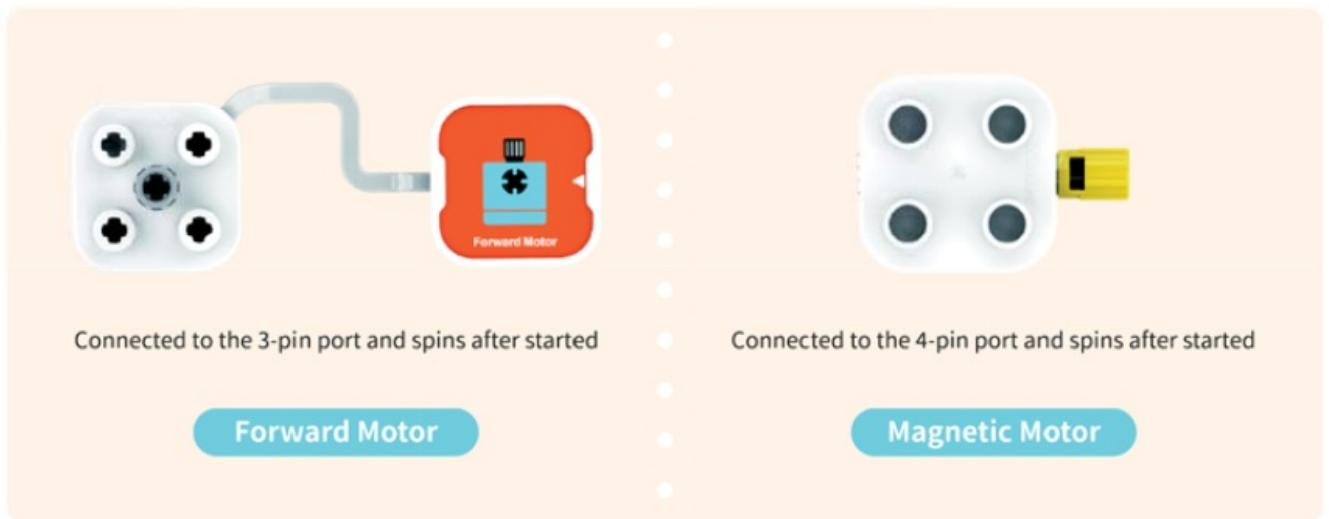
•





Actuators

- Connected to the 3-pin port and spins after started
- **Forward Motor**
- Connected to the 4-pin port and spins after started
- **Magnetic Motor**



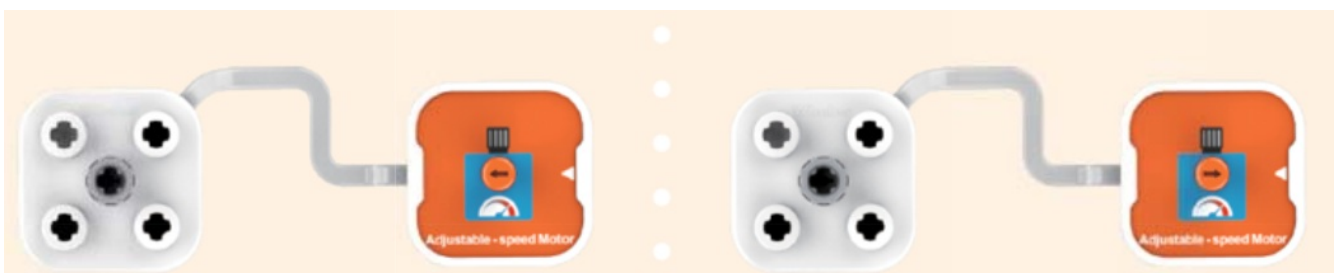
Forward Motor

- When the toggle switch is in the left position, the motor turns anti-clockwise
- When the toggle switch is in the right position, the motor turns clockwise

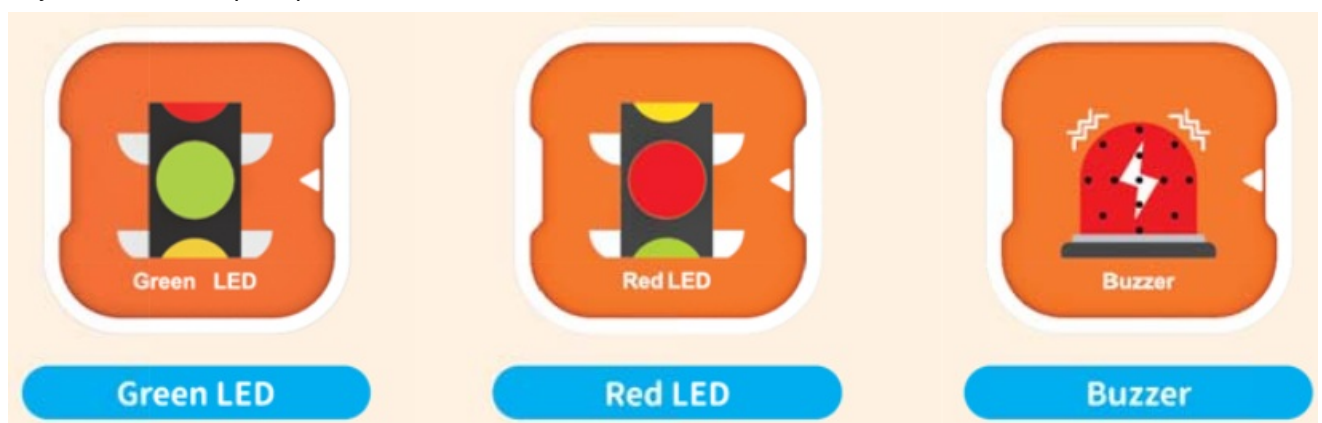


Adjustable-speed Motor

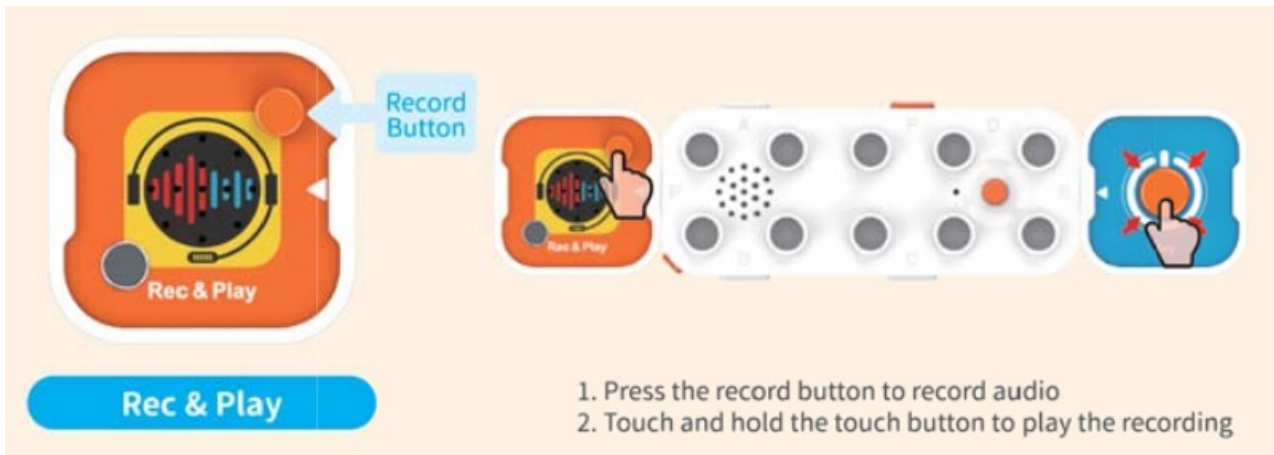
- If the arrow sign on the rotary switch points to the left, the motor speed reaches its lower limit
- If the arrow sign on the rotary switch points to the right, the motor speed reaches its upper limit



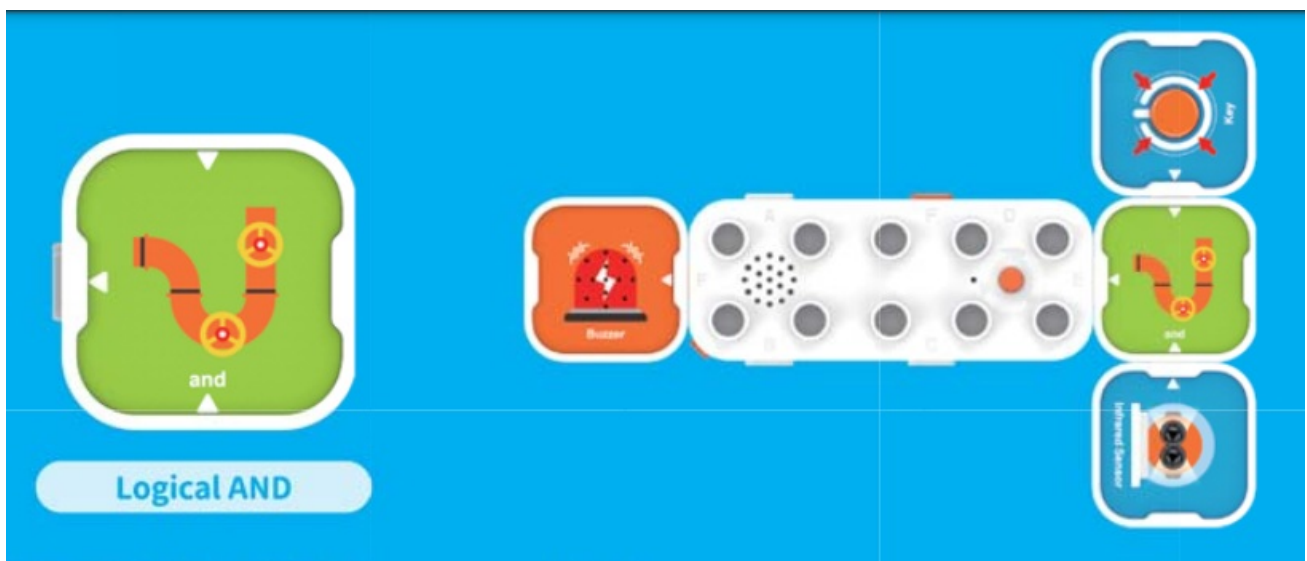
- Glows green
- Glows red
- Plays a continuous prompt sound



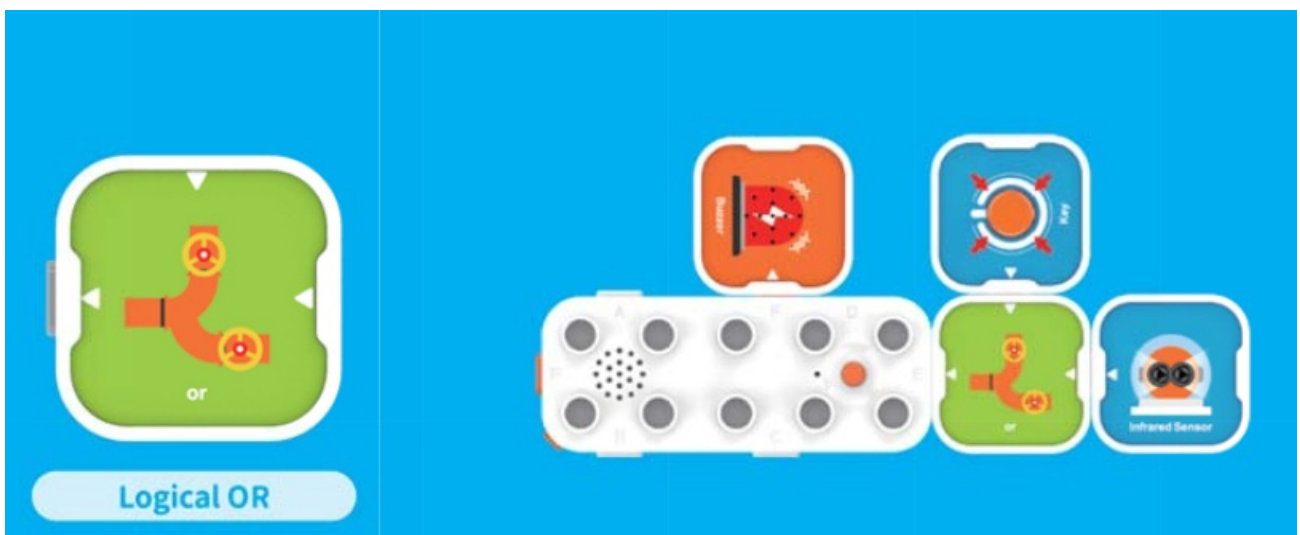
Plays a recording after started



LOGICAL BLOCKS



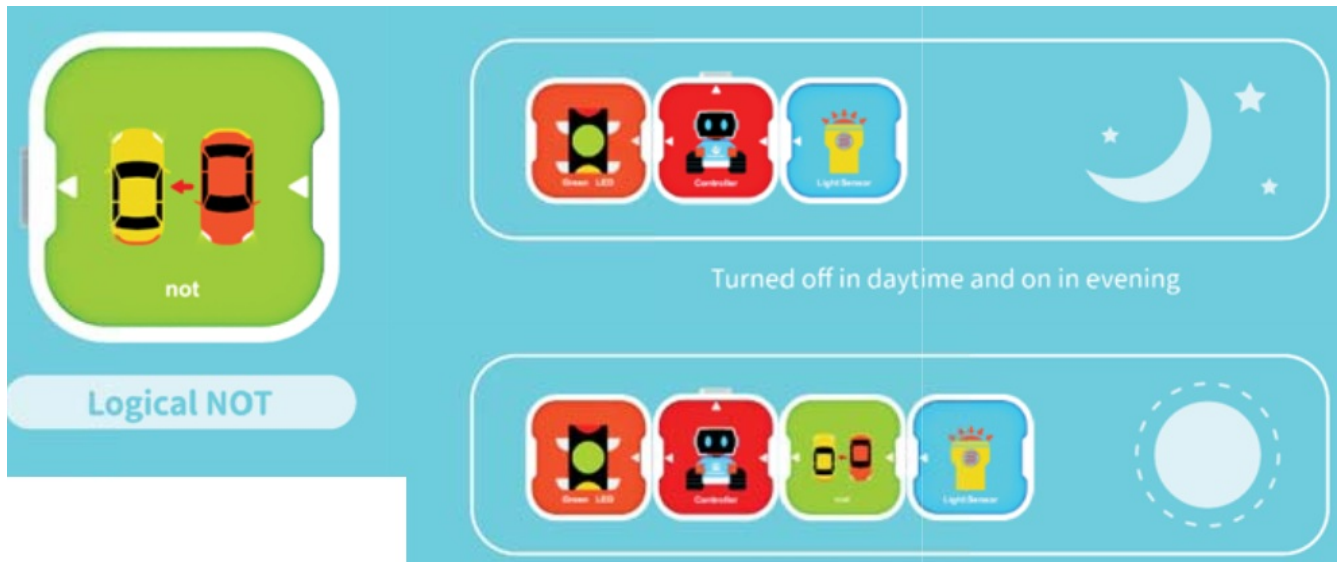
- Put logical AND between two digital blocks. The controller starts the actuators only if both digital blocks are triggered
- **Example:** When the infrared sensor detects something and the touch button is touched at the same time, the buzzer plays sounds



- Put logical OR between two digital blocks. The controller starts the actuators if one or both digital blocks are

triggered

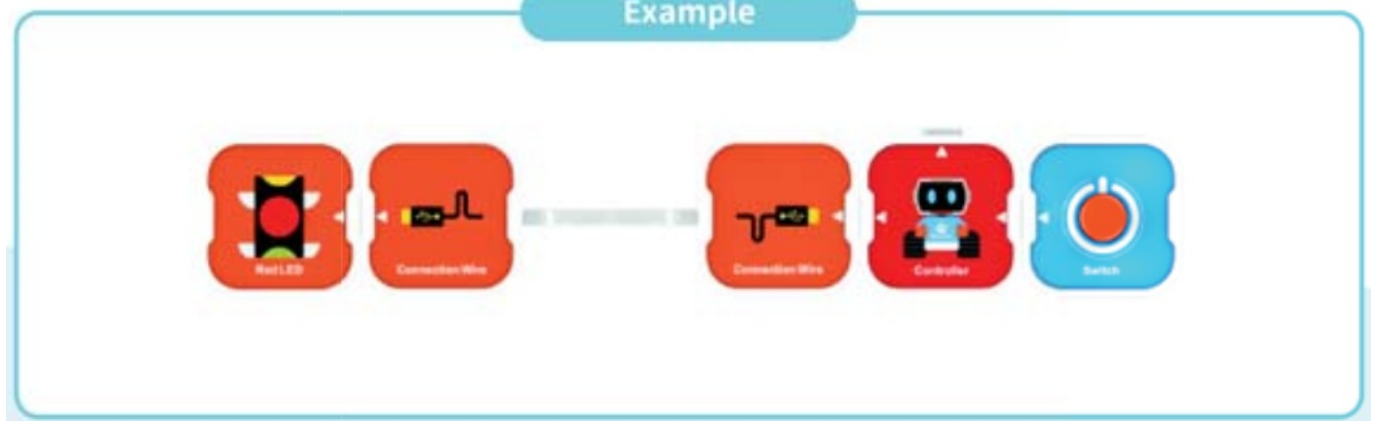
- **Example:** When the infrared sensor detects something or thi touch button is touched, the buzzer plays sounds



- You can connect logical NOT to a sensor to reverse the condition where the sensor is triggered



Example



Remote Control

- Overview
- Install Batteries



- The remote control operates on two AAA batteries
- We recommend that you use AAA alkaline batteries

Bluetooth Pairing

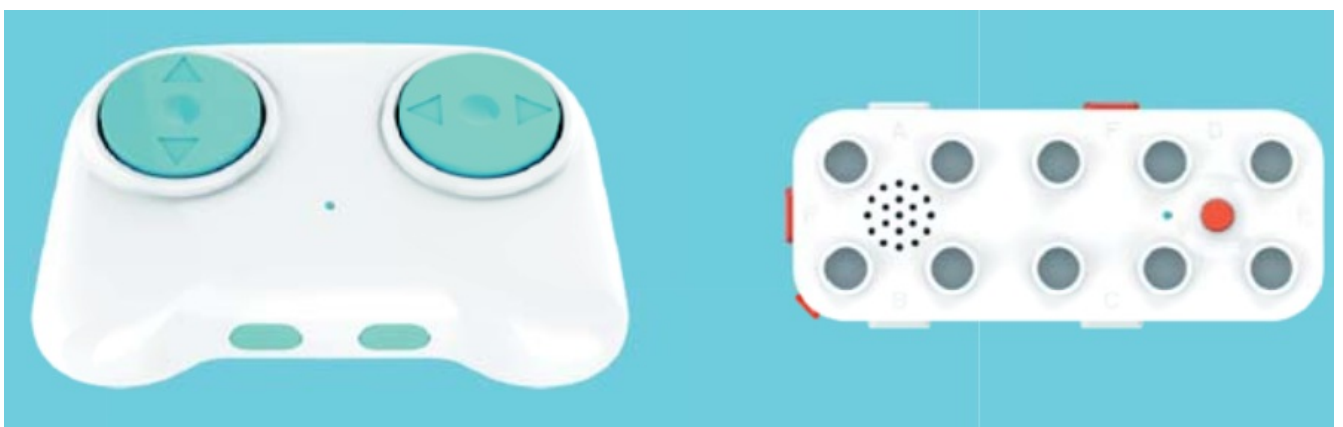


- **Turning on:** Press the power on/off button.
- **Remote control:** Blue light
- **Hashing Controller:** Blue light flashing
- **Pairing Remote control:** Put it close to the controller. Press and hold the pairing button until the blue light goes steady Controller Put it clock to that remote control.



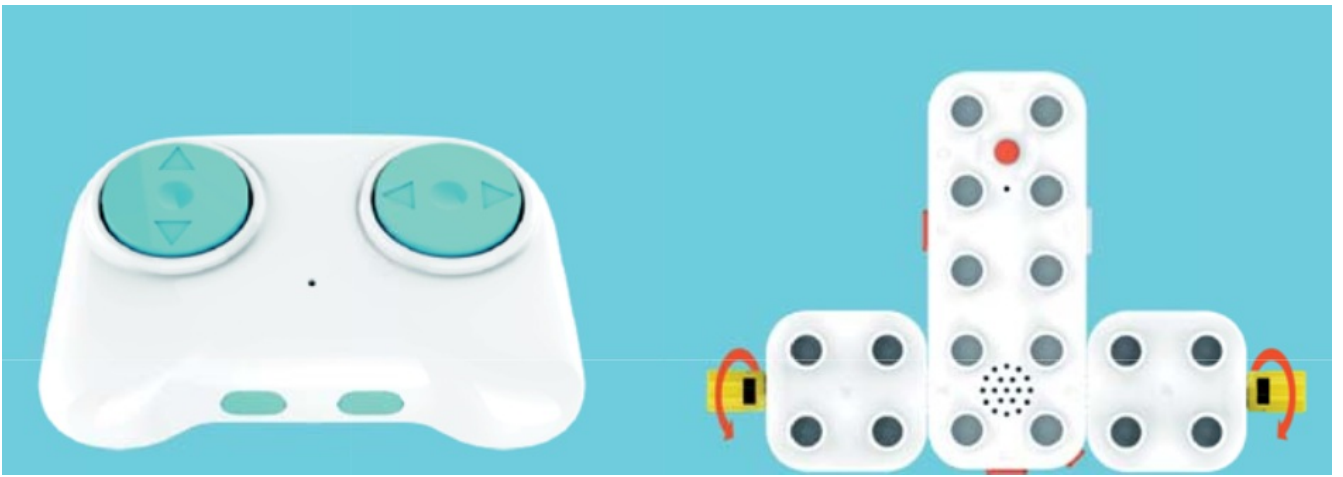
Pairing Succeeds

- **Remote control:** Blue light steady
- **Controller:** Blue light goes steady and plays prompt sound

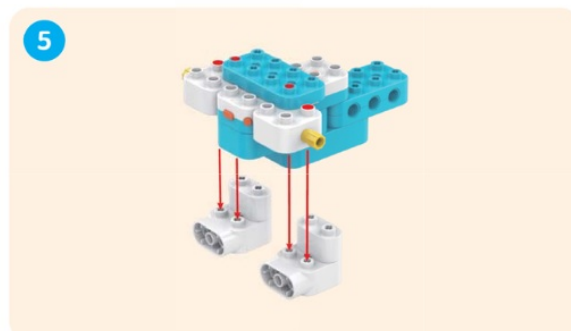
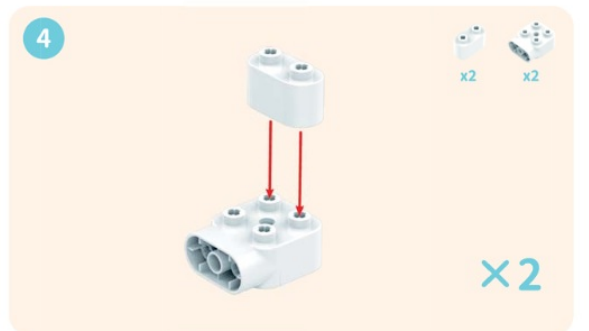
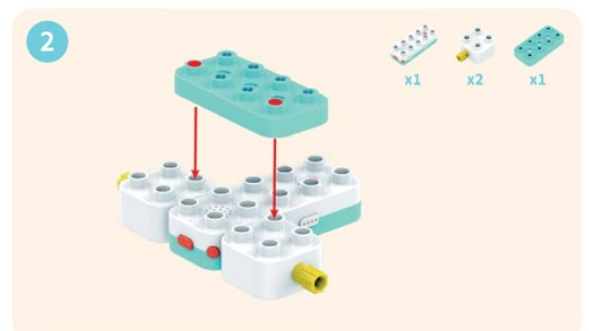
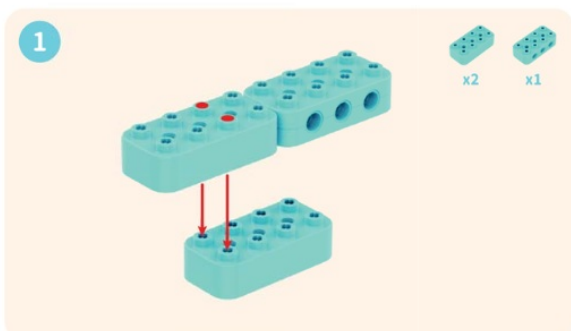


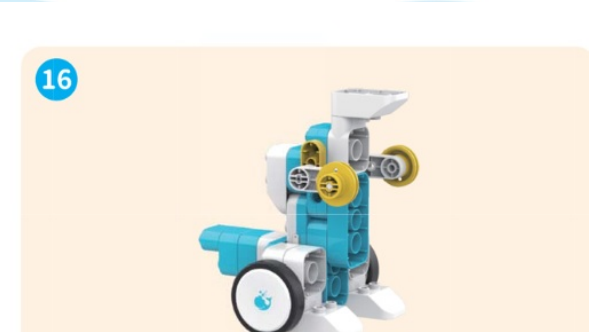
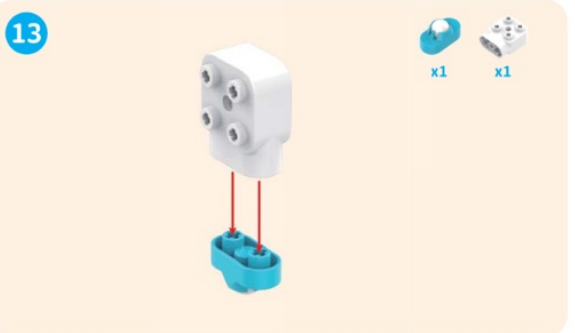
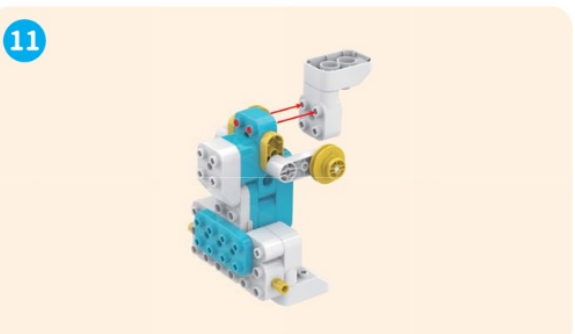
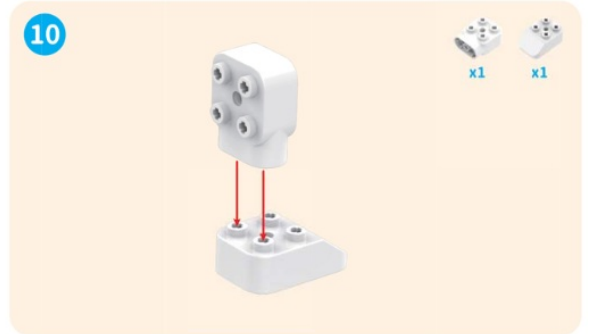
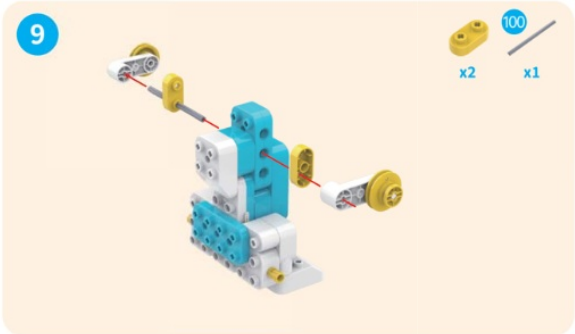
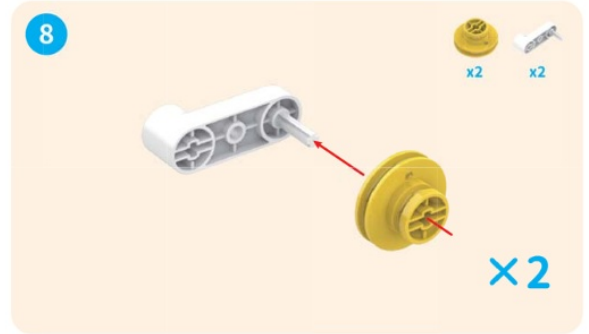
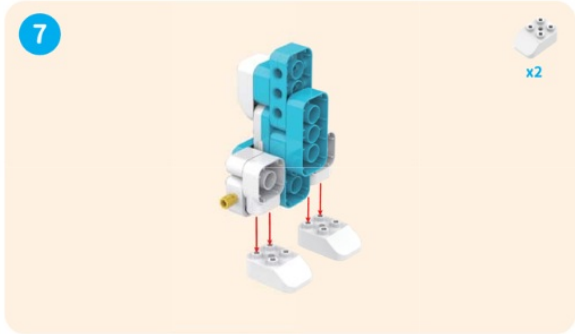
Using

- **Remote control:** Press the forward/backward and leftward/rightward buttons
- **Controller:** Connect the magnetic motors to the controller and make them spin



Sample Project





Frequently Asked Questions

How to Charge

1. The controller uses a 3.7V/430mAh lithium battery, which is fixed inside the product and cannot be disassembled.
2. The lithium battery of this product must be charged under the supervision of an adult. It should be charged according to the method or equipment provided by the company. It is forbidden to charge without supervision.
3. Once the power is low, please charge it in time and follow the charging operation.
4. Please avoid using controllers, actuators, sensors, and other components in a humid environment to prevent liquid from flowing in, causing a short circuit of the battery power supply or power terminals.
5. When the product is not in use, please fully charge it and place it for storage. It needs to be charged at least once every three months.
6. Please use the recommended adapter (SV/IA) to charge this product.
7. When the lithium battery cannot be charged or is deformed or overheated during charging, immediately disconnect the power supply and contact the after-sales service department of WhalesBot to deal with it. It is strictly forbidden to disassemble the battery without permission.
8. Do not expose the battery to open flames or dispose of it in a fire.

WARNING:

- Do not mix old and new batteries.
- Do not mix alkalines, standard (carbon-zinc), or rechargeable batteries.

Warning and Maintenance

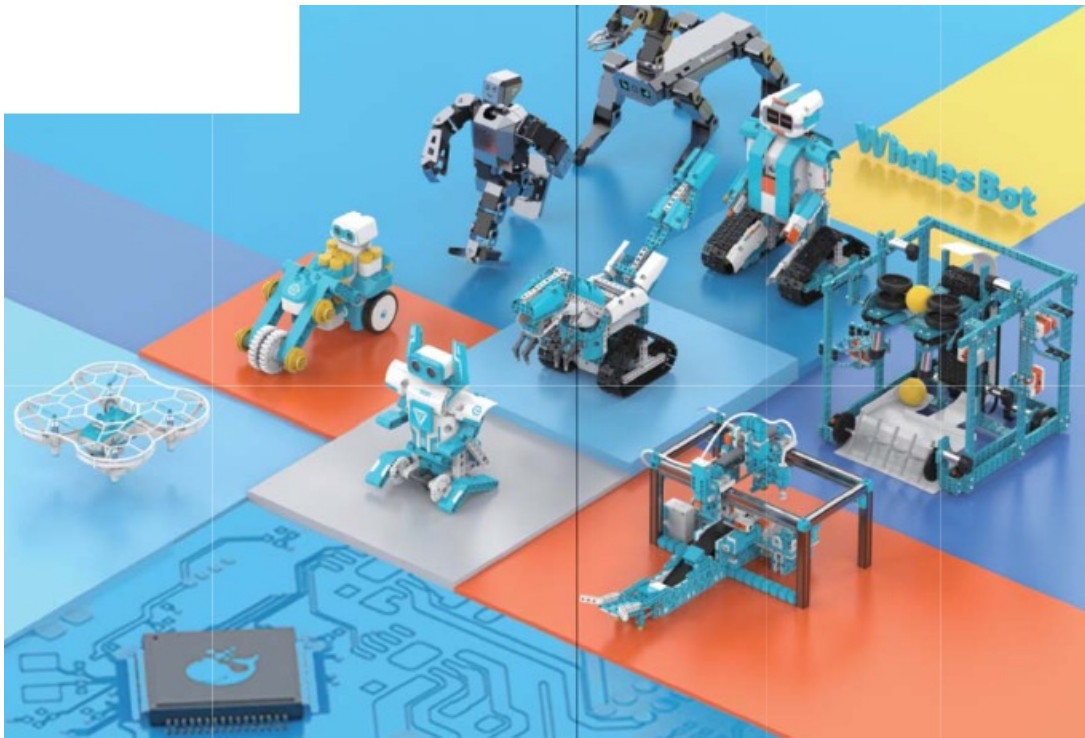
Warning

- Regularly check whether the wires, plugs, casings, or other parts are damaged. If any damage is found, stop using the product immediately until it is repaired. This product contains small balls and parts that pose choking risks, and is not suitable for children under 3 years old.
- Children should use this product under the supervision of an adult.
- Do not disassemble, repair, or modify this product by yourself to avoid product failure and personal injury.
- Do not place it in water, fire, humidity, or high-temperature environment to avoid product failure or safety accidents.
- Do not use it in an environment beyond the product's operating temperature range (0-40°C).

Maintenance

- If not in use for a long time, please store it in a dry and cool environment.
- When cleaning it, please turn off the product and wipe it with a dry cloth or disinfect it with less than 75% alcohol.

To help youth understand and enjoy technology.



FCC Warning

This device complies with part 15 of the FCC Rules. Operation is subject to the following two conditions:

1. This device may not cause harmful interference, and
2. This device must accept any interference received, including interference that may cause undesired operation.

Any Changes or modifications not expressly approved by the party responsible for compliance could void the user's authority to operate the equipment. Note: This equipment has been tested and found to comply with the limits for a Class B digital device, pursuant to part 15 of the FCC Rules. These limits are designed to provide reasonable protection against harmful interference in a residential installation. This equipment generates uses and can radiate radio frequency energy and, if not installed and used in accordance with the instructions, may cause harmful interference to radio communications. However, there is no guarantee that interference will not occur in a particular installation.

- If this equipment does cause harmful interference to radio or television reception, which can be determined by turning the equipment off and on, the user is encouraged to try to correct the interference by one or more of the following measures:
 - Reorient or relocate the receiving antenna.
 - Increase the separation between the equipment and receiver.
 - Connect the equipment into an outlet on a circuit different from that to which the receiver is connected.
 - Consult the dealer or an experienced radio/TV technician for help ..

The device has been evaluated to meet general RF exposure requirement. The device can be used in portable exposure condition without restriction.

Documents / Resources



[WhalesBot A7 Pro Controller Coding Robot for Kids](#) [pdf] User Guide

A7, A7 Pro Controller Coding Robot for Kids, Pro Controller Coding Robot for Kids, Controller Coding Robot for Kids, Coding Robot for Kids, Robot for Kids, Kids

References

- [User Manual](#)

[Manuals+](#), [Privacy Policy](#)

This website is an independent publication and is neither affiliated with nor endorsed by any of the trademark owners. The "Bluetooth®" word mark and logos are registered trademarks owned by Bluetooth SIG, Inc. The "Wi-Fi®" word mark and logos are registered trademarks owned by the Wi-Fi Alliance. Any use of these marks on this website does not imply any affiliation with or endorsement.