




# WhalesBot A3 12 In 1 Coding Robot User Manual

[Home](#) » [WhalesBot](#) » WhalesBot A3 12 In 1 Coding Robot User Manual 

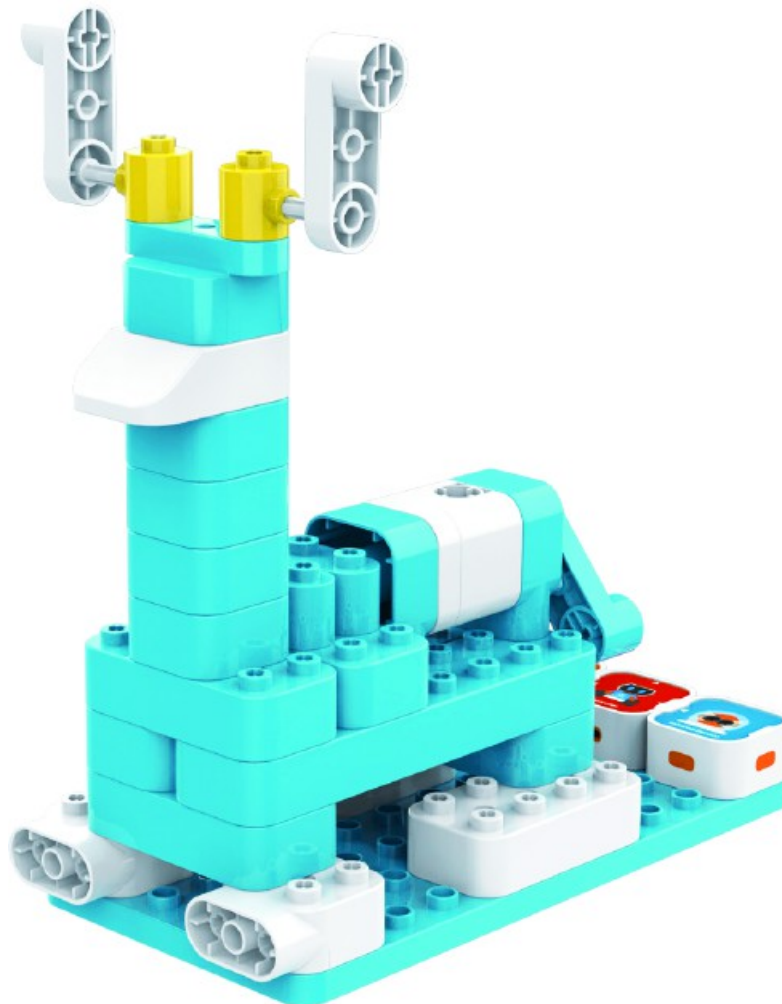


**User Manual**  
**12 in 1**

## Contents

- [1 A3 12 In 1 Coding Robot](#)
- [2 Main Controller](#)
- [3 Sensors](#)
- [4 Actuators](#)
- [5 Sample Project](#)
- [6 Frequently Asked Questions](#)
- [7 Documents / Resources](#)
  - [7.1 References](#)

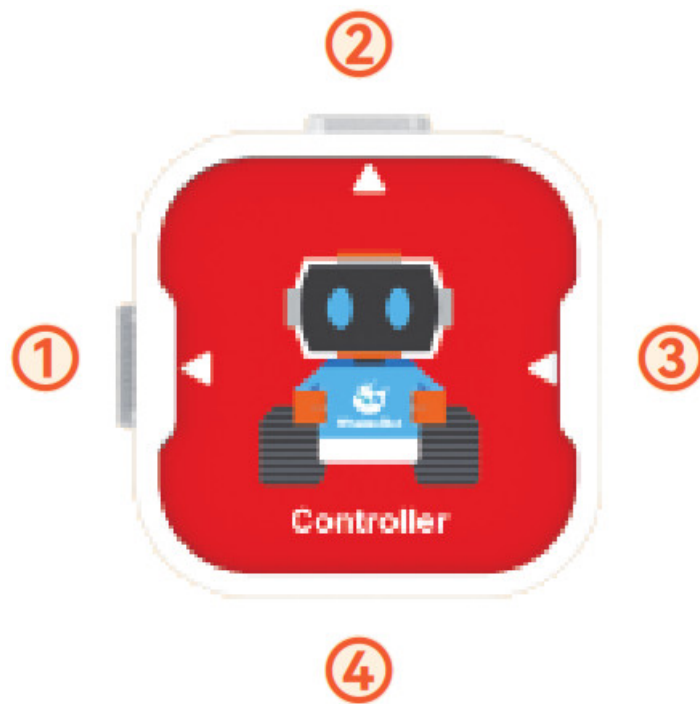
## A3 12 In 1 Coding Robot



\* More projects available at [www.whalesbot.ai](http://www.whalesbot.ai)

## Main Controller

Functions:



1. Actuator port
2. Actuator port
3. Sensor port
4. Charging port

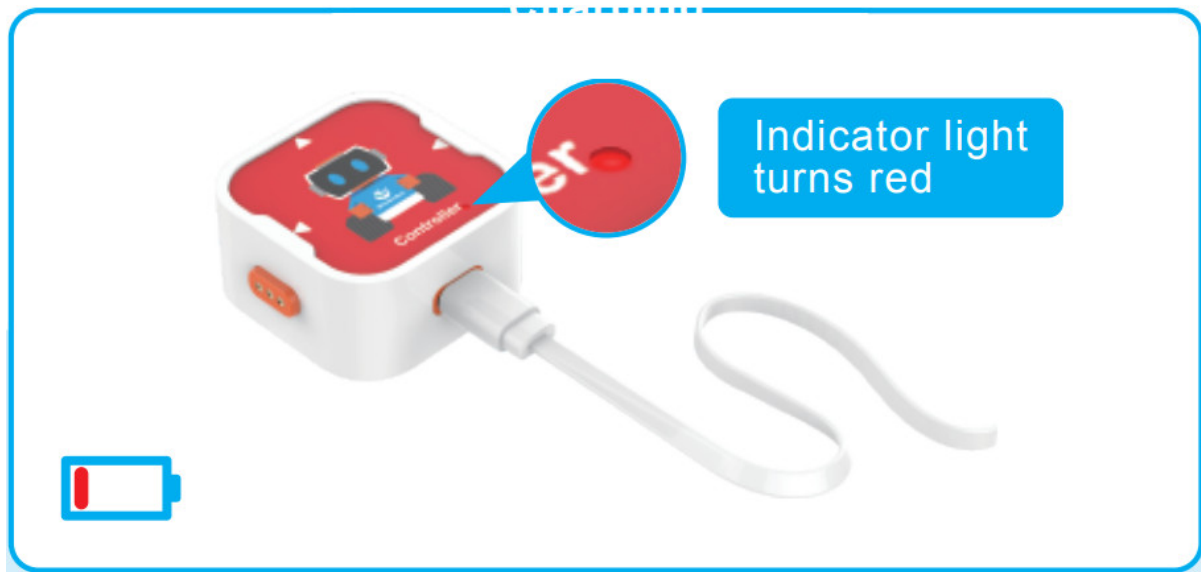
**Basic operations:**



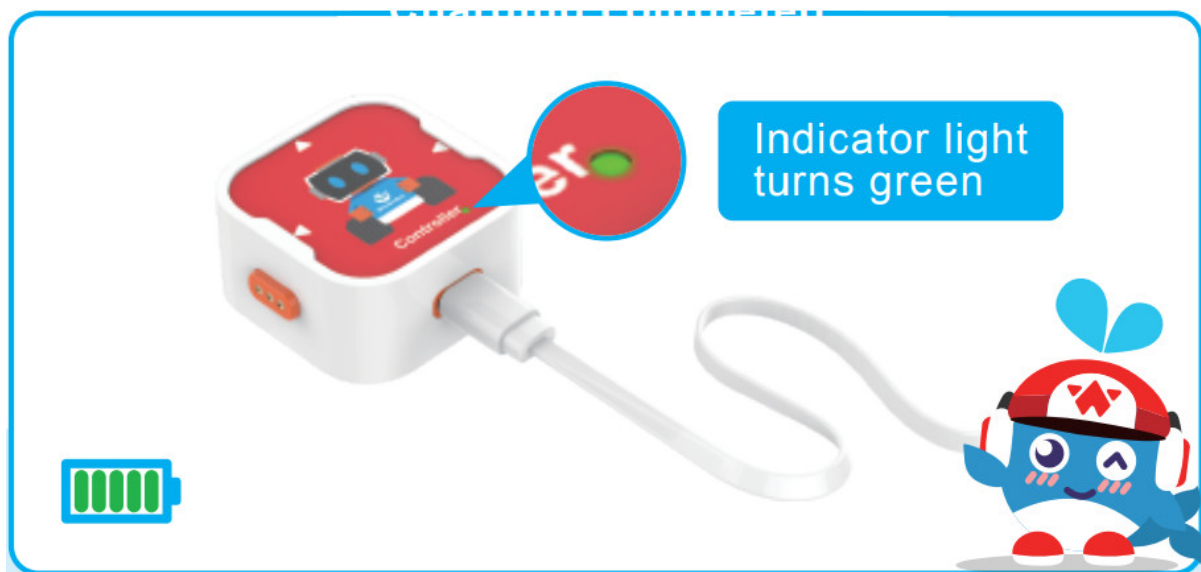
1. Connect the sensor
2. Connect the actuator

### 3. Trigger sensor

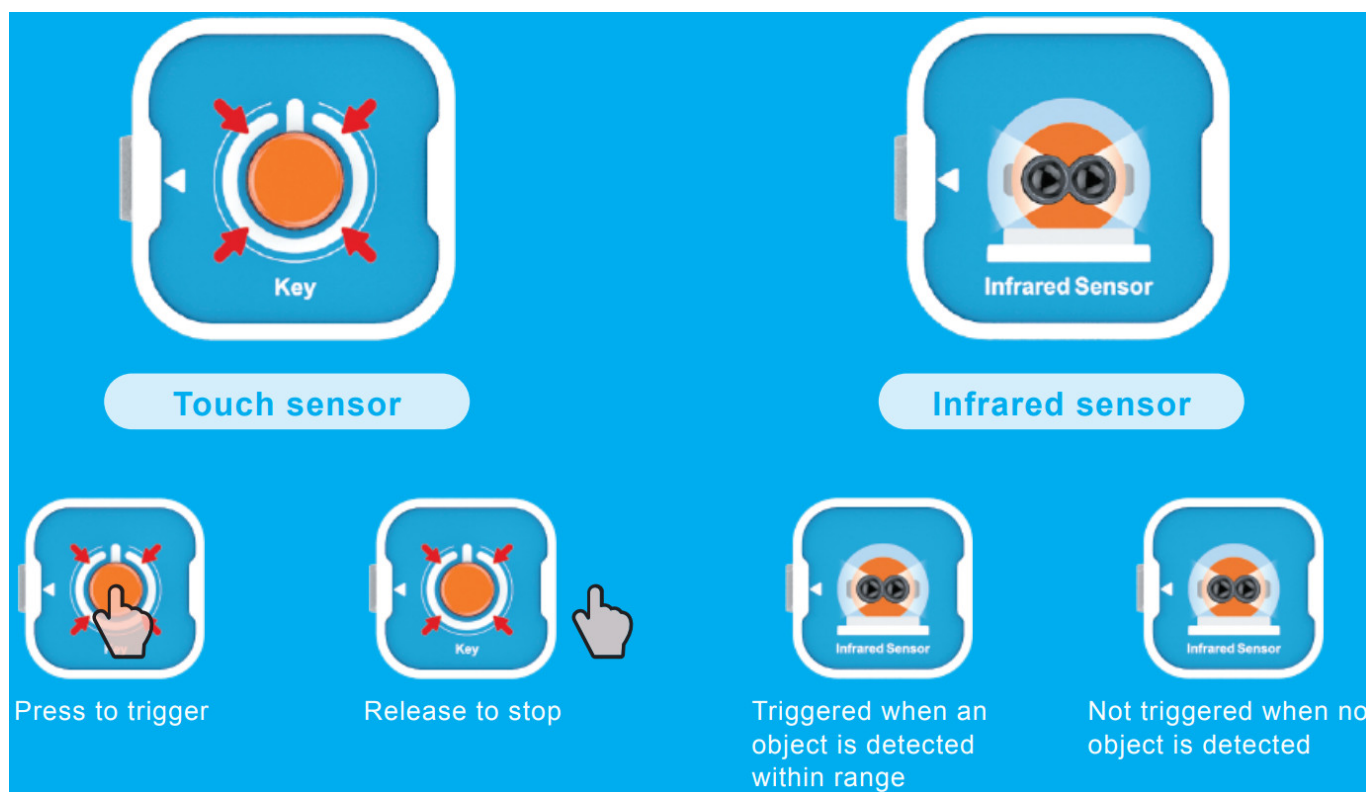
#### How to charge: Charging



#### Charging completed

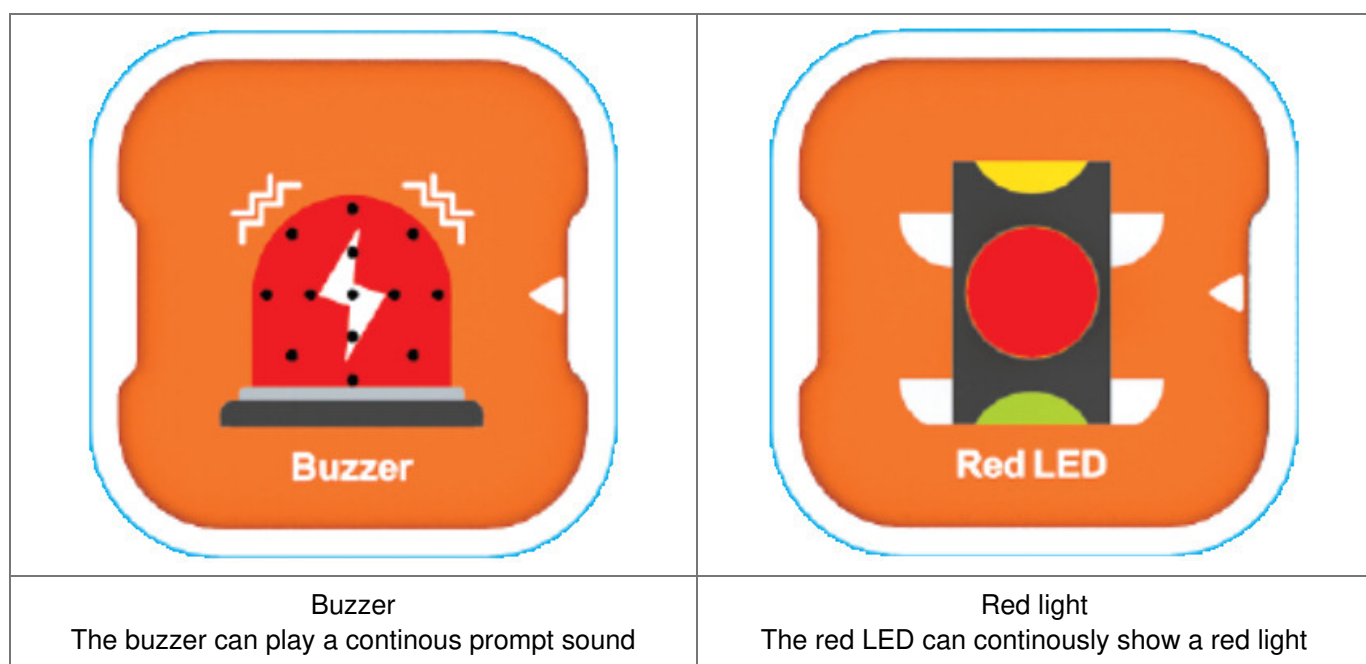
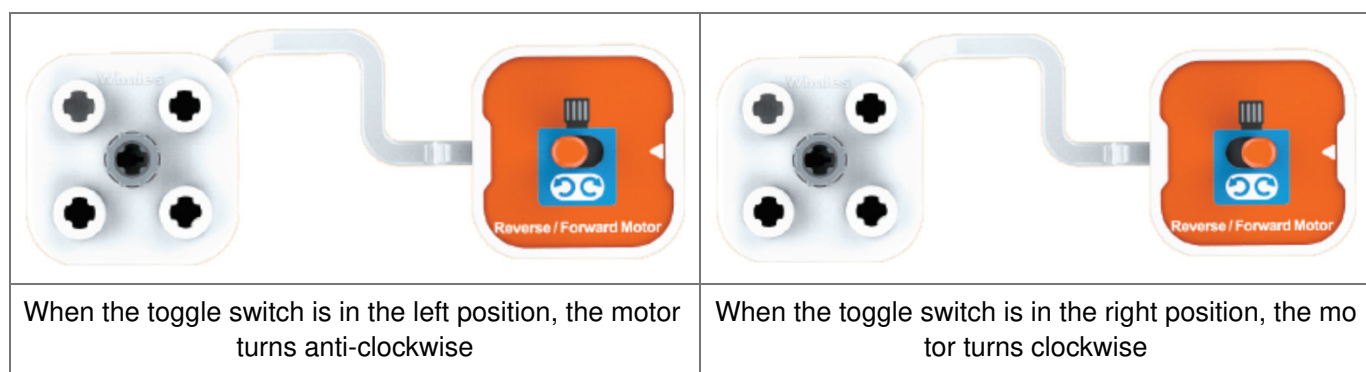


#### Sensors

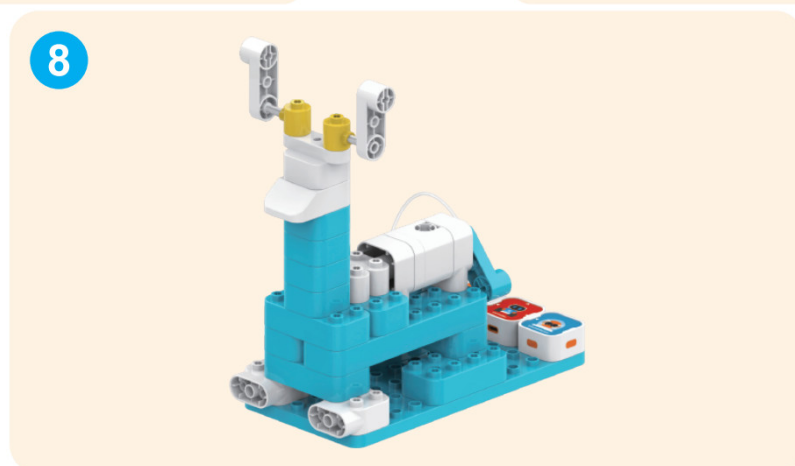
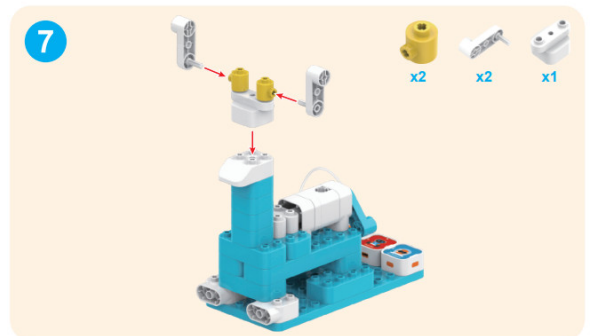
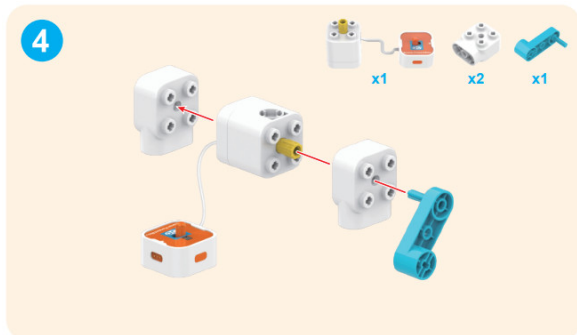
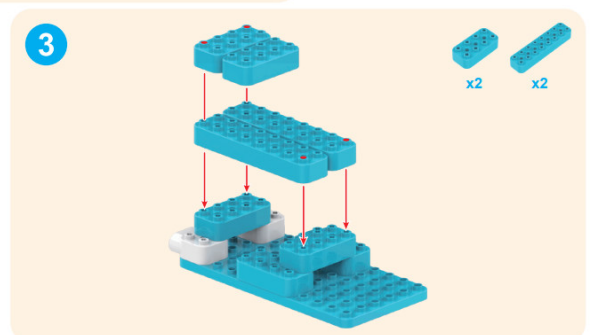
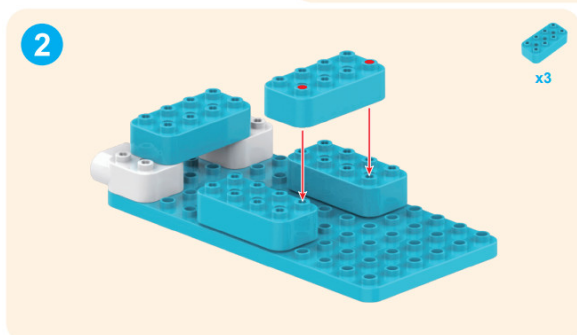
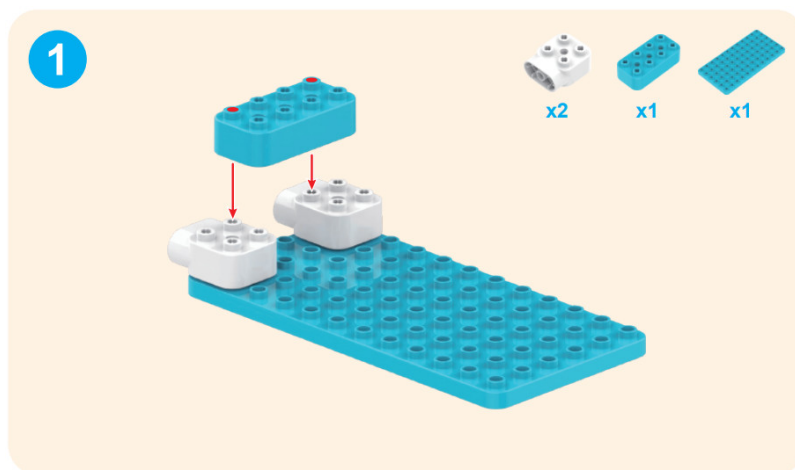


## Actuators

### Forward and reverse smart motors

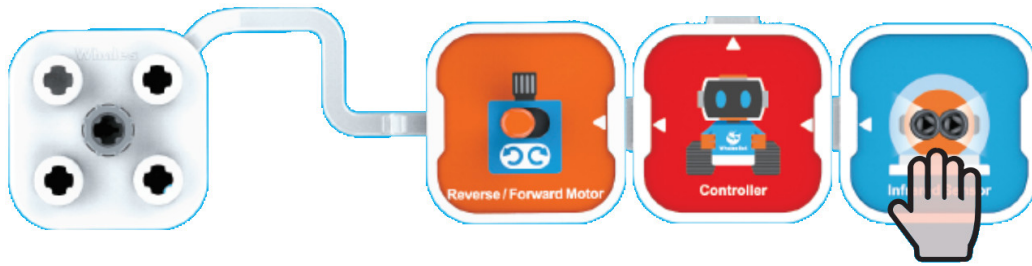


## Sample Project





When the coding blocks are connected to the deer, its tail moves when you place your hand on top!



## Frequently Asked Questions

### Charging operation

1. The controller uses a 3.7V/430mAh lithium battery, which is fixed inside the product and cannot be disassembled
2. The lithium battery of this product must be charged under the supervision of an adult. It should be charged according to the method or equipment provided by the company. It is forbidden to charge without supervision.
3. Once the power is low, please charge it in time and follow the charging operation
4. Please avoid using controllers, actuators, sensors, and other components in a humid environment to prevent liquid from flowing in, causing a short circuit of the battery power supply or power terminals short circuit.
5. When the product is not in use, please fully charge it and place it for storage. It needs to be charged at least once every three months.
6. Please use the recommended adapter (5V/1A) to charge this product.
7. When the lithium battery cannot be charged or deformed or overheated during charging, immediately disconnect the power supply and contact the after-sales service department of Whale Robot Company to deal with it. It is strictly forbidden to disassemble without permission.
8. **Caution:** Do not expose the battery to open flames or dispose of it in a fire.

### Warning and Maintenance



#### Warning

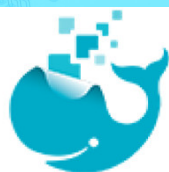
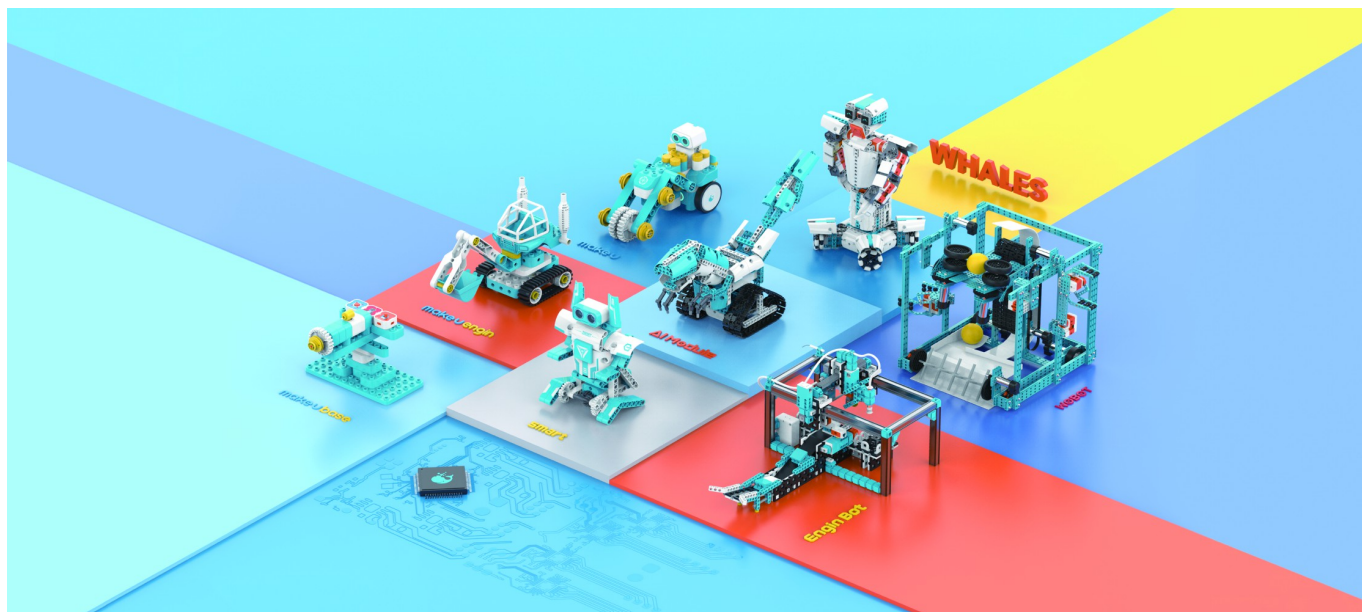
- Regularly check whether the wires, plugs, casings, or other parts are damaged. If any damage is found, stop using the product immediately until it is repaired.
- Children should use this product under the supervision of an adult.
- Do not disassemble, repair, or modify this product by yourself, to avoid product failure and personal injury.
- Do not place it in water, fire, humidity, or high-temperature environment to avoid product failure or safety accidents.
- Do not use it in an environment beyond the product's operating temperature range (0-40°C).



#### Maintenance

- If not in use for a long time, please store it in a dry and cool environment
- When cleaning it, please turn off the product and wipe it with a dry cloth or disinfect it with less than 75% alcohol.

**Goal:** Become the No.1 educational robotics brand worldwide.



**WhalesBot**

**CONTACT :**

WhalesBot Technology (Shanghai) Co., Ltd.

Web: <https://www.whalesbot.ai>

Email: [support@whalesbot.com](mailto:support@whalesbot.com)

Tel: +008621-33585660

Floor 7, Tower C, Weijing Center,  
No. 2337, Gudai Road, Shanghai



## Documents / Resources



**[WhalesBot A3 12 In 1 Coding Robot](#)** [pdf] User Manual

A3, A3 12 In 1 Coding Robot, 12 In 1 Coding Robot, Coding Robot, Robot

## References

-  [WhalesBot | 3-22 STEM Toys, STEM Education, Coding Robots, Robotics](#)
-  [WhalesBot | 3-22 STEM Toys, STEM Education, Coding Robots, Robotics](#)
- [User Manual](#)