



# WeTeLux 975350 Solar Floodlight with Motion Sensor Instruction Manual

[Home](#) » [WeTeLux](#) » WeTeLux 975350 Solar Floodlight with Motion Sensor Instruction Manual

## Contents [ [hide](#) ]

- 1 WeTeLux 975350 Solar Floodlight with Motion Sensor
- 2 Assembling and Setting up
- 3 Replacing the Battery
  - 3.1 SAFETY NOTES
- 4 Operation
  - 4.1 Intended Use
  - 4.2 Assembling and Setting up
  - 4.3 Cleaning
- 5 Technical Data
  - 5.1 EU DECLARATION OF CONFORMITY
- 6 CUSTOMER SERVICES
- 7 DISPOSAL
- 8 Documents / Resources
  - 8.1 References
- 9 Related Posts



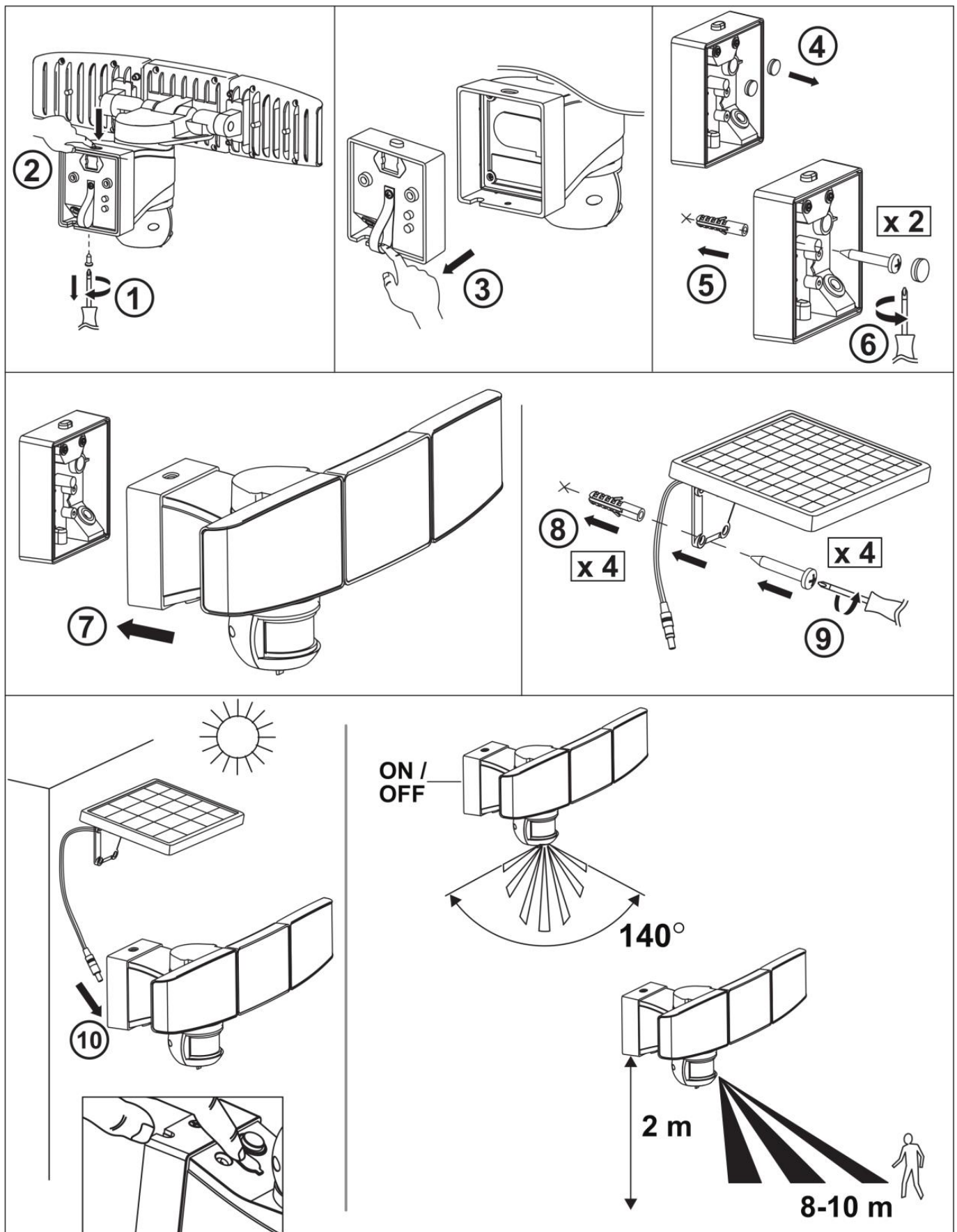
**WeTeLux 975350 Solar Floodlight with Motion Sensor**



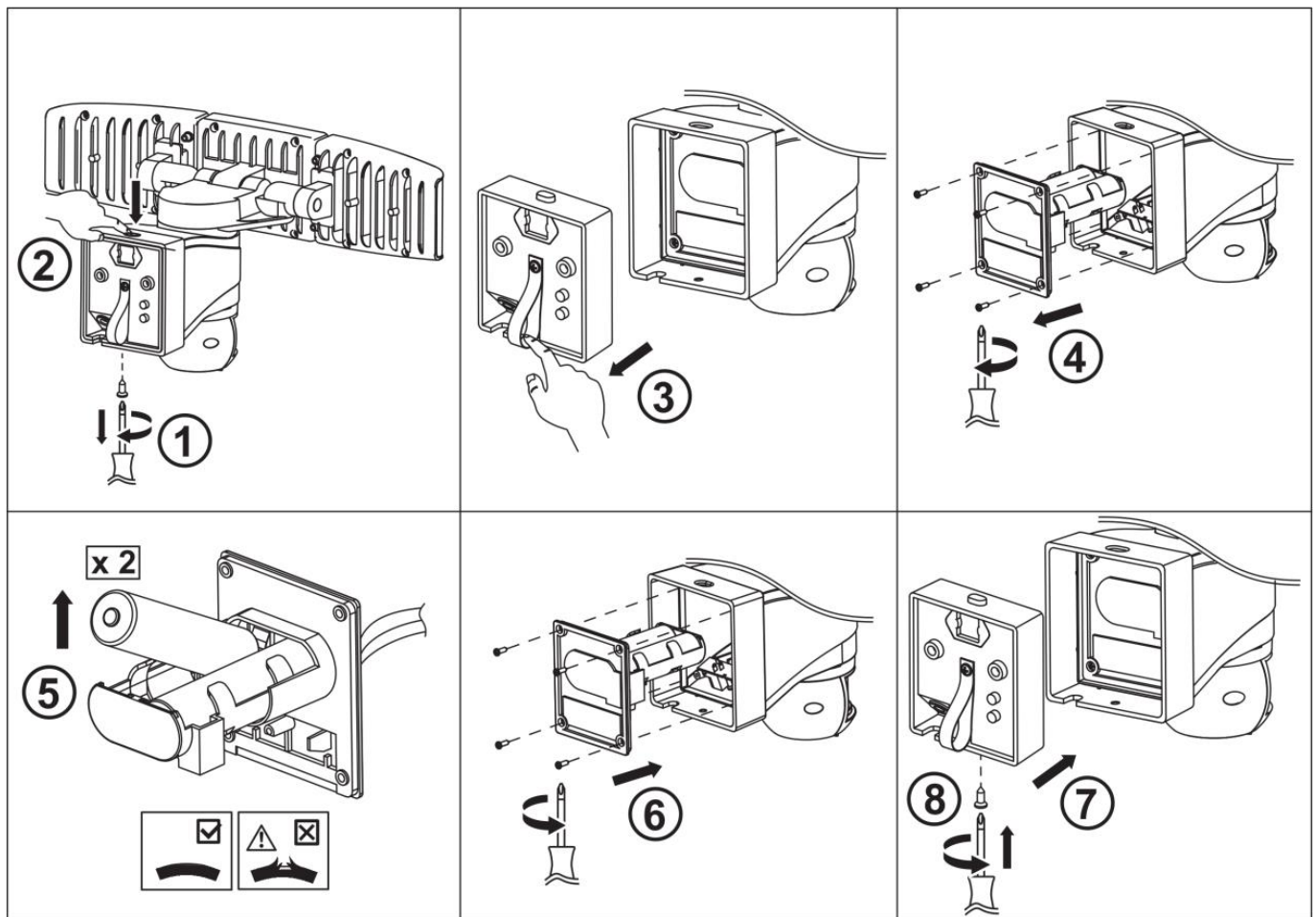
**Dear Customers,**

Instruction manuals provide valuable hints for using your new device. They enable you to use all functions, and they help you avoid misunderstandings and prevent damage. Please take the time to read this manual carefully and keep it for future reference.

**Assembling and Setting up**



**Replacing the Battery**



## SAFETY NOTES

Please note the included General Safety Notes and the following safety notes to avoid malfunctions, damage or physical injury:

- Please read this manual carefully and use the device only according to this manual.
- Dispose of used packaging material carefully or store it out of the reach of children. There is a danger of suffocation!
- Persons with limited physical, sensorial or mental abilities are not allowed to use the device, unless they are supervised and briefed for their safety by a qualified person.
- The solar Floodlight is no toy. Do not allow children to play with it.
- Only operate the solar floodlight with two 3.7 V 1800 mAh 18650 LI-ION batteries.
- Do not disassemble, burn or short-circuit rechargeable batteries.
- The product may not be exposed to extreme temperatures, strong vibrations or strong mechanical stress.
- Should the unit become damaged do not use it any further and have it repaired by a professional or contact our customer service. Do not disassemble the unit or try repairing it yourself.



Batteries do not belong in the household garbage.



For battery disposal please check with your local council.

## Operation




Intended Use

The product is used as a decorative solar lamp illuminating paths or areas. The solar panel charges the rechargeable battery during the hours of daylight. The solar floodlight switches on the light automatically when darkness falls, and the rechargeable battery in the device provides the energy for the light. During the day, the solar light switches itself off automatically.

Assembling and Setting up

- Assemble the parts to resemble the product picture and connect the plug on the solar panel with the socket on the floodlight.
- The solar floodlight is designed to resist the elements and is thus protected against dampness; it should not, however, be directly subjected to wetness or placed directly in water.
- If the solar panel has been covered by a protective foil for protection during transit, remove it.

Sensor Settings

	<p>Turn the TIME adjustment knob in the “-” or “+” direction to adjust how long the light stays on (from approximately 3 seconds to 7 minutes).</p> <p><b>Note:</b> If the light is on and new motion is detected, the light duration will be recalculated from the last motion detected.</p>
	<p>Sensitivity means the maximum distance at which the infrared sensor can be triggered by the movement of a body (10 meters). Turning the SENS knob from (+) to (-) decreases the sensitivity.</p>
	<p>The brightness control module has a built-in sensor device (photocell) that detects daylight and darkness. The position (☀) defines that the light is activated by the infrared sensor day and night, the position (🌙) defines that the light is activated by the infrared sensor only at night. With the LUX knob you can set the unit to activate at the desired brightness level.</p> <p><b>Note:</b> When it is in the day position, the device will turn on when it is too bright outside; turn the control towards (🌙). However, if the light does not turn on because of streetlights or a bright fixture around the house, turn this control toward (☀).</p>

Operation

The socket for the plug of the solar panel and a push button are located under the housing of the floodlight. Use the push button to turn the floodlight on and off. After switching on the floodlight, it first lights up for the set time and then switches on again when the motion detector is triggered.

Using the Solar Floodlight

- The performance of the solar floodlight varies according to the season, and the duration and intensity of the sunlight reaching it.
- In long periods of insufficient sunshine, the rechargeable battery may not charge up sufficiently to allow the floodlight to illuminate for a longer length of time. The battery will then take in less energy during the day than they expend at night. This inevitably results in a reduction in the length of time that the light will work for. This could also mean that the battery run completely flat and become damaged as a result.
- Take care that the solar panel does not become dirty and that it is kept free of snow and ice in winter. Otherwise, the performance of the solar panel could be affected. Cold temperatures affect the service life of the battery adversely. If you do not need the solar floodlight for a longer period of time, e. g. in winter, it should be cleaned and stored in a dry, frost-free room. Remove the battery from the solar light to avoid damaging the battery or the solar light.



#### • **Replacing the Battery**

Open the solar cell housing as shown in the graphic and replace the 2x 3.7 V 1800 mAh 18650 LI-ION batteries with new ones of the same type and power. Pay attention to correct polarity, polarity symbols are located in the battery compartment.

#### **Cleaning**

- Wipe the housing of the device with a lightly moistened cloth. Use detergent as needed. Do not immerse the device in water or any other liquid.
- Do not clean the device with aggressive chemicals or abrasives in order not to damage the surfaces.

#### **Technical Data**

- Solar cell: 8 V / 230 mA / 3.5W (155 x 205 mm), 2.8 m cable
- Floodlight input: max. 9 V  , 1 A
- LED: 90x, 15 W, 1000 1m, 6500 K
- Motion detector: 140° – 10 m
- Dimensions: 34 x 19 x 16.5 cm
- Degree of protection: IP44
- Battery: 2x 3.7 V  , 1800 mAh, 18650 LI-ION
- Lighting time: up to 8 hours with a fully charged battery

#### **EU DECLARATION OF CONFORMITY**

We, the Westfalia Werkzeugcompany, Werkzeugstraße 1, D-58093 Hagen, declare by our own responsibility that the product

- Solar Floodlight with Motion Sensor
- Article No. 97 53 50

is according to the basic requirements, which are defined in the European Directives and their amendments.

#### **2011/65/EU**

Restriction of the Use of certain hazardous Substances in electrical and electronic Equipment (RoHS)

## 2014/30/EU

Electromagnetic Compatibility (EMC)

EN 55014-1:2017+A11, EN 55014-2:1997+AC+A1+A2,

EN 61000-3-2:2014, EN 61000-3-3:2013

## 2006/42/EC

Machinery

EN 62841-1:2015+AC, EN 62841-2-1:2018+A11

The technical documentations are on file at the QA department of the Westfalia Werkzeugcompany.

Hagen, 13th of September, 2022

Thomas Klingbeil,

Qualitätsbeauftragter / QA Representative

## CUSTOMER SERVICES

Westfalia

Wydenhof 3a

CH-3422 Kirchberg (BE)

**Telefon:** (034) 4 13 80 00

**Telefax:** (034) 4 13 80 01

Internet: [www.westfalia-versand.ch](http://www.westfalia-versand.ch)

## DISPOSAL


**Dear Customer,**

Please help avoid waste materials.

If you at some point intend to dispose of this article, then please keep in mind that many of its components consist of valuable materials, which can be recycled. Please do not discharge it in the rubbish bin, but check with your local council for recycling facilities in your area.

Gestaltung urheberrechtlich geschützt

## Documents / Resources

 <p><b>WeTeLux</b> Solar Fluter mit Bewegungsmelder Solar Floodlight with Motion Sensor Aus 100% Solar 100% Wasserdicht 100% Energie aus Solar 100% Energie aus Solar 100% Energie aus Solar</p>	<p><a href="#">WeTeLux 975350 Solar Floodlight with Motion Sensor</a> [pdf] Instruction Manual 975350 Solar Floodlight with Motion Sensor, 975350, Solar Floodlight with Motion Sensor, Floodlight with Motion Sensor, Motion Sensor</p>
---	--

## References

- [W Westfalia Versand Österreich | Werkzeug ✓ Garten ✓ Technik ✓ & mehr](#)
- [W Westfalia Versand Schweiz mobil bei Westfalia Versand Schweiz](#)
- [W Westfalia Versand Deutschland mobil bei Westfalia Versand Deutschland](#)

