



WeTeLux 967667 Solar Torch Set of 3 Instruction Manual

[Home](#) » [WeTeLux](#) » WeTeLux 967667 Solar Torch Set of 3 Instruction Manual 

Contents

- [1 WeTeLux 967667 Solar Torch Set of 3](#)
- [2 Product Information](#)
- [3 Product Usage Instructions](#)
- [4 Safety Notes](#)
- [5 INSTALLATION INSTRUCTIONS](#)
- [6 Operation](#)
- [7 Technical Data](#)
- [8 EC DECLARATION OF CONFORMITY](#)
- [9 CUSTOMER SERVICES](#)
- [10 Documents / Resources](#)
 - [10.1 References](#)
- [11 Related Posts](#)

The logo for WeTeLux, featuring the brand name in a bold, black, sans-serif font. A horizontal rainbow-colored bar is positioned directly beneath the text.

WeTeLux 967667 Solar Torch Set of 3



Product Information

The Solar-Torch is a set of three solar-powered lamps designed to provide decorative lighting in outdoor spaces. The lamps are equipped with a 1.6 V/80 mA/128 mW solar panel and a 1x NiMH, 1.2 VHR03 (AAA) / 200 mAh rechargeable battery, which can provide up to 8 hours of continuous lighting when fully charged. The lamps are IP44 rated for protection against dampness and can withstand the elements to a certain degree.

Product Usage Instructions

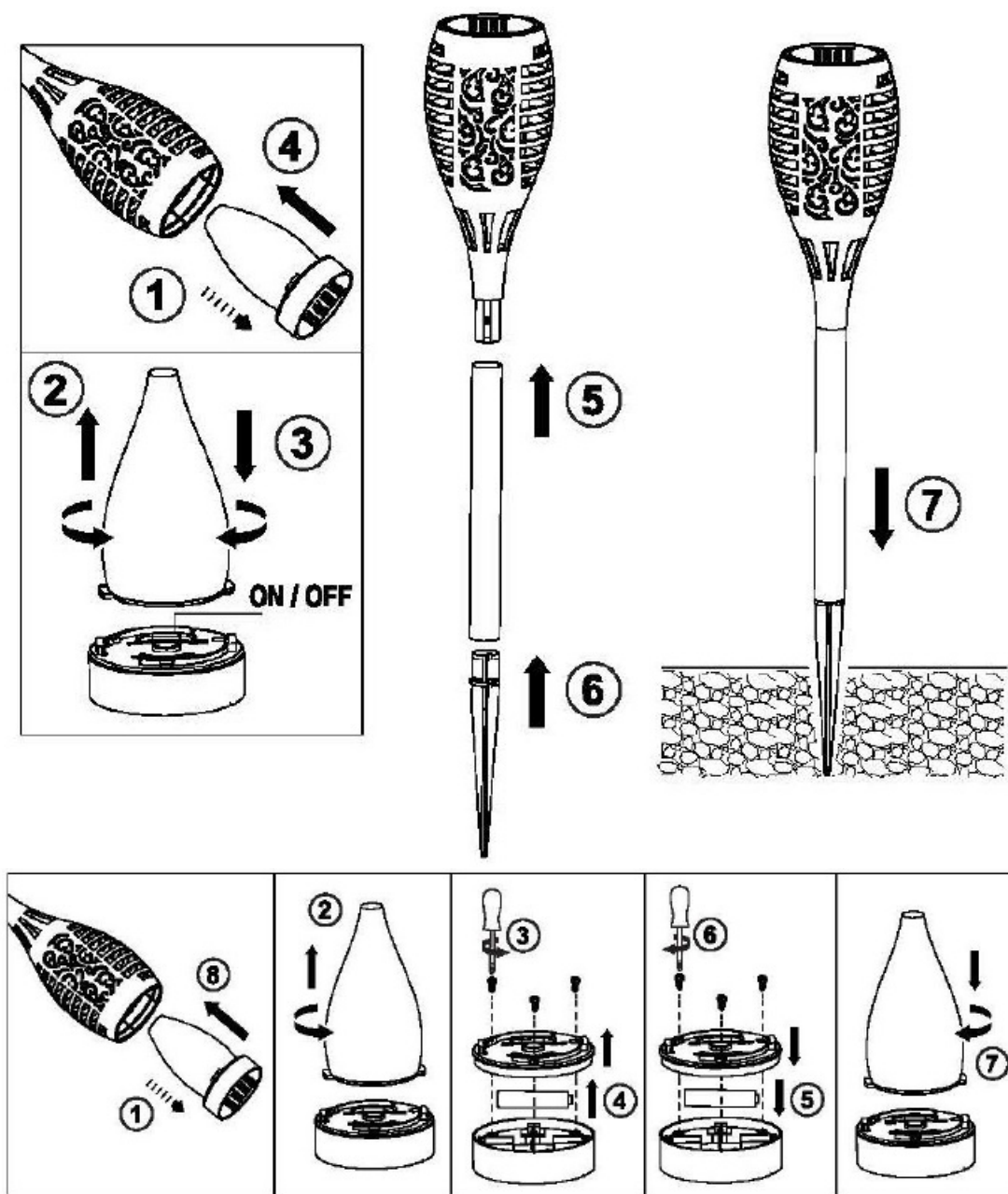
1. **Assembling and Setting up:** Assemble the parts to resemble the product picture. If the solar panel has been covered by a protective foil during transit, remove it. The lamps should not be directly subjected to wetness or placed directly in water.
2. **Operation:** Lift the lamp head out of the housing with a screwdriver or other suitable object as shown in the picture. The diffusor is detached by turning counter-clockwise. Under the lamp head, there is a switch marked with ON and OFF. In the ON position, the lamp lights up in white, and in the position OFF, the lamp is turned off. For operation and charging, the switch must be set to ON.
3. **Using the Solar Lamp:** The performance of the solar lamp varies according to the season, duration, and intensity of the sunlight reaching it. In long periods of insufficient sunshine, the rechargeable battery may not charge correctly. Foreexample, in winter, you should remove the rechargeable battery, clean it and store it in a warm, dry area.
4. **Replacing the Battery:** Remove the lamp head as described above. Loosen the screws as shown in the picture. Open the lamp and replace the rechargeable battery NiMH, HR03 (AAA), 1.2 V, 200 mAh with one of the same type and specifications. Observe correct polarity, polarity symbols are in the lamp head.
5. **Cleaning:** Wipe the housing of the device with a lightly moistened cloth. Use detergent as needed. Do not immerse the device in water or any other liquid. Do not clean the device with aggressive chemicals or abrasives to avoid damaging the surfaces.

Safety Notes

The Solar-Torch is not a toy. Keep it out of reach of children. Do not disassemble, burn, or short-circuit rechargeable batteries. Do not use the solar lights as the sole light source for pathways or similar use cases. Dispose of used packaging material carefully or store it out of the reach of children to avoid suffocation. Persons with limited physical, sensorial, or mental abilities are not allowed to use the device unless they are supervised and briefed for their safety by a qualified person. Please note the included General Safety Notes and the following safety notes to avoid malfunctions, damage or physical injury:

- Please read this manual carefully and use the device only according to this manual.
- Dispose of used packaging material carefully or store it out of the reach of children. There is a danger of suffocation!
- Persons with limited physical, sensorial or mental abilities are not allowed to use the device, unless they are supervised and briefed for their safety by a qualified person.
- The solar lamps are no toys. Do not allow children to play with them.
- Please operate the solar light only with one 1.2 V NiMH battery with at least 200 mAh (size AAA).
- Do not disassemble, burn or short-circuit rechargeable batteries.
- Do not use the solar lights as sole light source for pathways or similar. In dark, complex areas, it is advisable to install a separate, powerful light source, which is controlled by a motion sensor and a twilight switch.
- The product may not be exposed to extreme temperatures, strong vibrations or strong mechanical stress.
- Do not disassemble, burn or short-circuit rechargeable batteries.
- Do not stare directly into the LEDs and do not direct the light beam towards people or animals. Do not use devices which can strongly focus light for viewing the light beam.
- Should the unit become damaged do not use it any further and have it repaired by a professional or contact our customer service. Do not disassemble the unit or try repairing it yourself.

INSTALLATION INSTRUCTIONS



Operation

Intended Use

The product is used as a decorative solar lamp for gardens or terraces. The solar panel integrated in the device charges the rechargeable battery during the hours of daylight. The solar light switches on the light automatically when darkness falls, and the rechargeable battery in the device provides the energy for the light. During the day, the solar light switches itself off automatically. The solar light is designed for domestic use, and is not for use in commercial premises. Any use other than that described above is not permitted.

Assembling and Setting up

- Assemble the parts to resemble the product picture.
- The solar light is designed to resist the elements and is thus protected against dampness; it should not, however, be directly subjected to wetness or placed directly in water.
- If the solar panel has been covered by a protective foil for protection during transit, remove it.

Operation

Lift the lamp head out of the housing with a screwdriver or other suitable object as shown in the picture. The

diffuser is detached by turning counter-clockwise. Under the lamp head there is a switch marked with "ON" and "OFF". In the "ON" position the lamp lights up in white, in the position "OFF", the lamp is turned off. For operation and charging the switch must be set to "ON".

Using the Solar Lamp

- The performance of the solar lamp varies according to the season, and the duration and intensity of the sunlight reaching it.
- In long periods of insufficient sunshine, the rechargeable battery may not charge up sufficiently to allow the lamp to illuminate for a longer length of time. The battery will then take in less energy during the day than they expend at night. This inevitably results in a reduction in the length of time that the light will work for. This could also mean that the battery run completely flat and become damaged as a result.
- Take care that the solar panel does not become dirty and that it is kept free of snow and ice in winter. Otherwise, the performance of the solar panel could be affected. Cold temperatures affect the service life of the battery adversely. If you do not require the solar light for a longer period of time, for example in winter, you should remove the rechargeable battery, clean it, and store it in a warm, dry area.

Replacing the Battery

Remove the lamp head as described above. Loosen the screws as shown in the picture. Open the lamp and replace the rechargeable battery NiMH, HR03 (AAA), 1,2 V, 200 mAh with one of the same type and specifications. Observe correct polarity, polarity symbols are in the lamp head.

Cleaning

- Wipe the housing of the device with a lightly moistened cloth. Use detergent as needed. Do not immerse the device in water or any other liquid.
- Do not clean the device with aggressive chemicals or abrasives in order not to damage the surfaces.

Technical Data

- **Solar Panel:** 1,6 V / 80 mA / 128 mW (31 x 31 mm)
- **LED:** 1x 600 mW, 6 lm, 1800 K (Amber)
- **Dimensions:** Ø 75 x 427 mm
- **Degree of Protection:** IP44
- **Battery:** 1x NiMH, 1,2 V HR03 (AAA) / 200 mAh
- **Illumination Time:** Up to 8 h with fully charged Battery

EC DECLARATION OF CONFORMITY

We, the Westfalia Werkzeugcompany, Werkzeugstraße 1, D-58093 Hagen, declare by our own responsibility that the product

- Solar Torch, Set of 3
- Article No. 96 76 67

is according to the basic requirements, which are defined in the European Directives and their amendments

2011/65/EU

Restriction of the Use of certain hazardous Substances in electrical and electronic Equipment (RoHS)

2014/30/EU

Electromagnetic Compatibility (EMC) EN 55015:2019+A11, EN 61547:2009

The technical documentations are on file at the QA department of the Westfalia Werkzeugcompany

CUSTOMER SERVICES


Westfalia Werkzeugstraße 1 D-58093 Hagen

- **Telefon:** (0180) 5 30 31 32
- **Telefax:** (0180) 5 30 31 30
- **Internet:** www.westfalia.de

DISPOSAL

Dear Customer, Please help avoid waste materials. If you at some point intend to dispose of this article, then please keep in mind that many of its components consist of valuable materials, which can be recycled. Please do not discharge it in the rubbish bin, but check with your local council for recycling facilities in your area.

Documents / Resources

	<p>WeTeLux 967667 Solar Torch Set of 3 [pdf] Instruction Manual 967667 Solar Torch Set of 3, 967667, Solar Torch Set of 3, Torch Set of 3</p>
-------------------------------------------------------------------------------------	-------------------------------------------------------------------------------------------------------------------------------------------------------------------

References

- [W Westfalia Versand Österreich | Werkzeug ✓ Garten ✓ Technik ✓ & mehr](#)
- [W Westfalia Versand Schweiz mobil bei Westfalia Versand Schweiz](#)
- [W Westfalia Versand Deutschland mobil bei Westfalia Versand Deutschland](#)