



WeTeLux 96 76 67 Solar Torch Set of 3 Instruction Manual

[Home](#) » [WeTeLux](#) » WeTeLux 96 76 67 Solar Torch Set of 3 Instruction Manual 

Contents

- [1 WeTeLux 96 76 67 Solar Torch Set of 3](#)
- [2 Product Information](#)
- [3 Usage Instructions](#)
- [4 SAFETY NOTES](#)
- [5 Operation](#)
- [6 Technical Data](#)
- [7 CUSTOMER SERVICES](#)
- [8 Documents / Resources](#)
 - [8.1 References](#)
- [9 Related Posts](#)



WeTeLux 96 76 67 Solar Torch Set of 3



Product Information

The Solar-Fackel, 3er Set Solar Torch is a set of three solar-powered lamps designed to withstand the elements and provide lighting for outdoor spaces. The lamps feature a 1.6V/80mA/128mW solar cell and an LED light, with a protective grade of IP44. The lamp is powered by a NiMH battery, with a capacity of 200mAh, which can provide up to 8 hours of light when fully charged. The lamp is not a toy and should not be used or played with by children.

Usage Instructions

Safety Notes:

- Read the instruction manual carefully before using the device.
- Do not expose the device to extreme temperatures, strong vibrations or mechanical stress.
- Dispose of used packaging material safely or store it out of reach of children.
- Persons with limited physical, sensorial or mental abilities are not allowed to use the device unless they are supervised by a qualified person.
- Do not disassemble, burn or short-circuit rechargeable batteries.
- Batteries should not be disposed of in household garbage.
Contact your local council for safe battery disposal methods.

Assembling and Setting up

1. Assemble the lamp according to the product picture.
2. The solar light is designed to resist elements but should not be directly subjected to wetness or placed directly in water.
3. If the solar panel has been covered by a protective foil for protection during transit, remove it.

Operation

1. Lift the lamp head out of the housing with a screwdriver or other suitable object. The diffuser is detached by turning it counter-clockwise.
2. Under the lamp head, there is a switch marked with ON and OFF.
In the ON position, the lamp lights up in white, and in the OFF position, the lamp is turned off.
3. For operation and charging, make sure to set the switch to ON.

Using the Solar Lamp

- The performance of the solar lamp varies according to the season, duration, and intensity of sunlight reaching it.
- In long periods of insufficient sunshine, the rechargeable battery may not charge properly. For example, in winter or during extended cloudy periods, remove the rechargeable battery, clean it, and store it in a warm, dry area.
- could also mean that the battery run completely flat and become damaged as a result.
- Take care that the solar panel does not become dirty and that it is kept free of snow and ice in winter.
Otherwise, the performance of the solar panel could be affected. Cold temperatures affect the service life of the battery adversely. If you do not require the solar light for a longer period of time, for example in winter, you should remove the rechargeable battery, clean it, and store it in a warm, dry area.

Replacing the Battery

1. Remove the lamp head as described above.
2. Loosen the screws as shown in the picture.
3. Open the lamp and replace the rechargeable battery NiMH, HR03 (AAA), 1.2V, 200mAh with one of the same type and specifications.
4. Observe correct polarity; polarity symbols are in the lamp head.

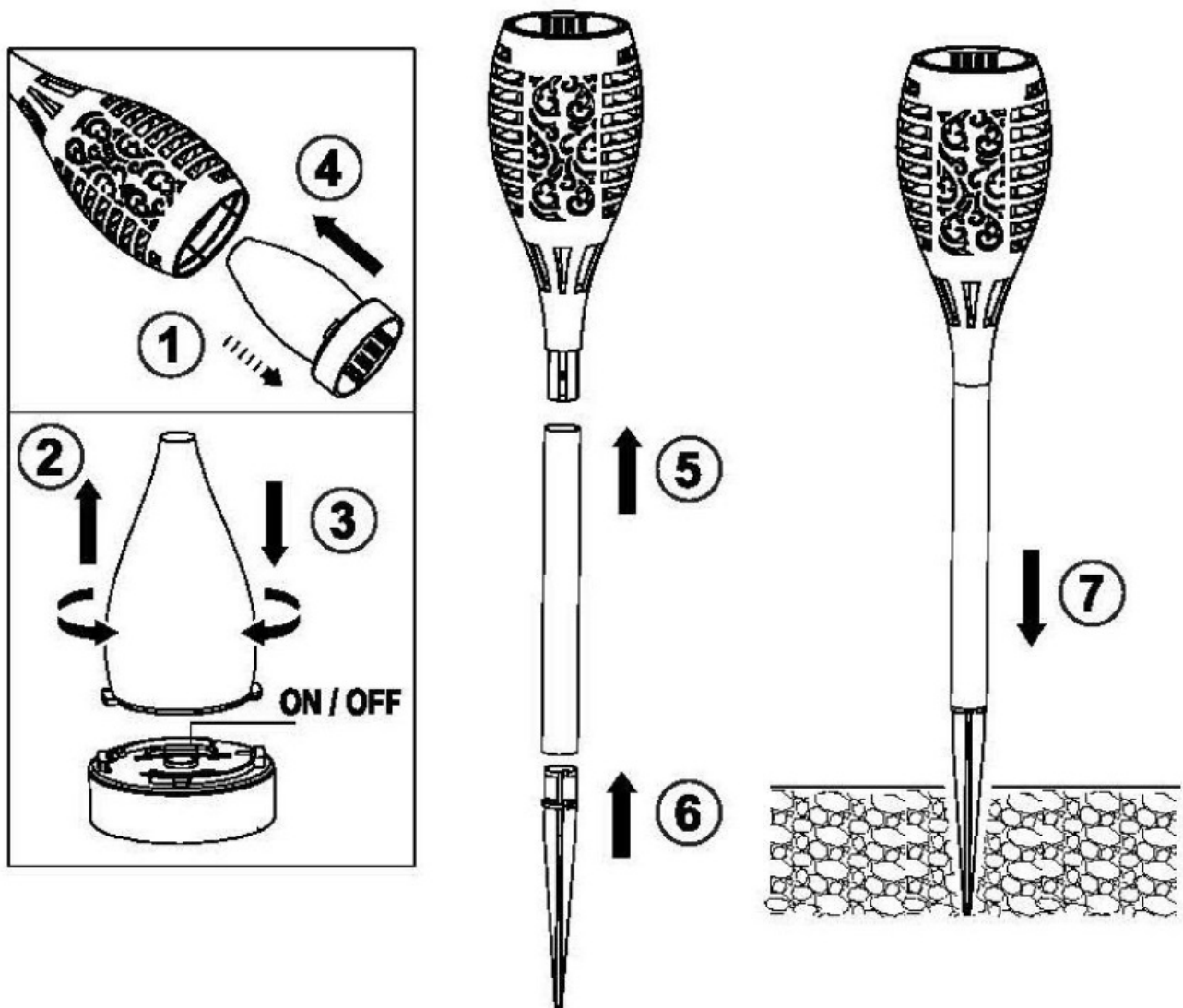
Cleaning

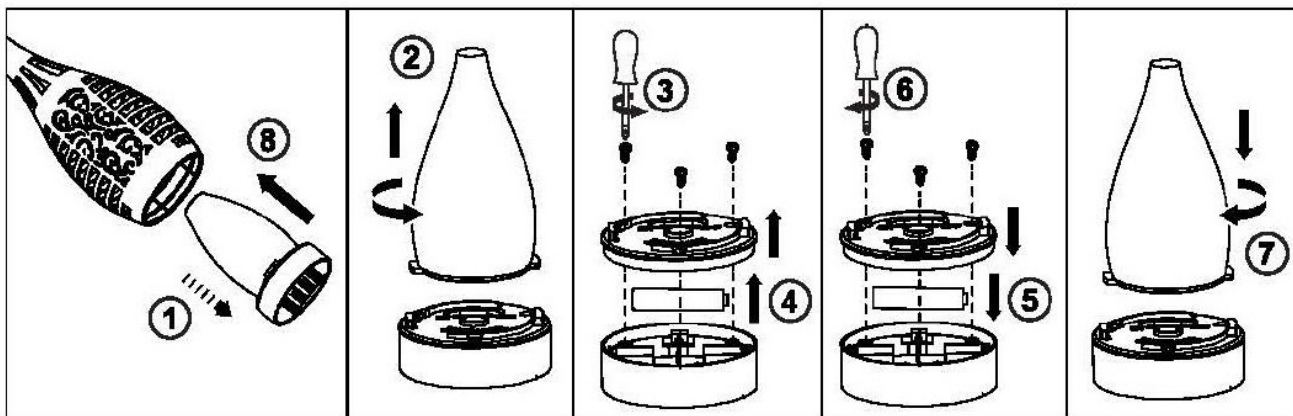
- Wipe the housing of the device with a lightly moistened cloth. Use detergent as needed.
- Do not immerse the device in water or any other liquid.
- Do not clean the device with aggressive chemicals or abrasives to avoid damaging surfaces.

SAFETY NOTES

Please note the included General Safety Notes and the following safety notes to avoid malfunctions, damage or physical injury:

- Please read this manual carefully and use the device only according to this manual.
- Dispose of used packaging material carefully or store it out of the reach of children. There is a danger of suffocation!
- Persons with limited physical, sensorial or mental abilities are not allowed to use the device, unless they are supervised and briefed for their safety by a qualified person.
- The solar lamps are no toys. Do not allow children to play with them.
- Please operate the solar light only with one 1.2 V NiMH battery with at least 200 mAh (size AAA).
- Do not disassemble, burn or short-circuit rechargeable batteries.
- Do not use the solar lights as sole light source for pathways or similar. In dark, complex areas, it is advisable to install a separate, powerful light source, which is controlled by a motion sensor and a twilight switch.
- The product may not be exposed to extreme temperatures, strong vibrations or strong mechanical stress.
- Do not disassemble, burn or short-circuit rechargeable batteries.
- Do not stare directly into the LEDs and do not direct the light beam towards people or animals. Do not use devices which can strongly focus light for viewing the light beam.
- Should the unit become damaged do not use it any further and have it repaired by a professional or contact our customer service. Do not disassemble the unit or try repairing it yourself.





Batteries do not belong in the household garbage.

For battery disposal please check with your local council.

Operation

Intended Use

The product is used as a decorative solar lamp for gardens or terraces. The solar panel integrated in the device charges the rechargeable battery during the hours of daylight. The solar light switches on the light automatically when darkness falls, and the rechargeable battery in the device provides the energy for the light. During the day, the solar light switches itself off automatically.

The solar light is designed for domestic use, and is not for use in commercial premises. Any use other than that described above is not permitted.

Technical Data

- Solar Panel: 1,6 V / 80 mA / 128 mW (31 x 31 mm)
- LED: 1x 600 mW, 6 lm, 1800 K (Amber)
- Dimensions: Ø 75 x 427 mm
- Degree of Protection: IP44
- Battery: 1x NiMH, 1,2 V HR03 (AAA) / 200 mAH
- Illumination Time: Up to 8 h with fully charged Battery

CUSTOMER SERVICES

DEUTSCHLAND

Westfalia
Werkzeugstraße 1
D-58093 Hagen
Telefon: (0180) 5 30 31 32
Telefax: (0180) 5 30 31 30
Internet: www.westfalia.de

ÖSTERREICH

Westfalia
Moosham 31
A-4943 Geinberg OÖ
Telefon: (07723) 4 27 59 54
Telefax: (07723) 4 27 59 23
Internet: www.westfalia-versand.at

SCHWEIZ

Westfalia

Wydenhof 3a

CH-3422 Kirchberg (BE)

Telefon: (034) 4 13 80 00

Telefax: (034) 4 13 80 01

Internet: www.westfalia-versand.ch




Dear Customer,

Please help avoid waste materials.

If you at some point intend to dispose of this article, then please keep in mind that many of its components consist of valuable materials, which can be recycled. Please do not discharge it in the rubbish bin, but check with your local council for recycling facilities in your area.

Documents / Resources

	<p>WeTeLux 96 76 67 Solar Torch Set of 3 [pdf] Instruction Manual</p> <p>96 76 67 Solar Torch Set of 3, 96 76 67, Solar Torch Set of 3, Torch Set of 3, Set of 3</p>
---	--

References

- [W Westfalia Versand Österreich | Werkzeug ✓ Garten ✓ Technik ✓ & mehr](#)
- [W Westfalia Versand Schweiz mobil bei Westfalia Versand Schweiz](#)
- [W Westfalia Versand Deutschland mobil bei Westfalia Versand Deutschland](#)