



Westinghouse F7TC Standard Powersports Spark Plug User Guide

[Home](#) » [Westinghouse](#) » Westinghouse F7TC Standard Powersports Spark Plug User Guide 

Westinghouse F7TC Standard Powersports Spark Plug User Guide



WARNING This Quick Start Guide is not a substitute for reading the operator's manual. To reduce the risk of injury or death, user must read and understand operator's manual before using this product

Contents

- 1 TOOLS YOU WILL NEED
- 2 BEFORE STARTING
- 3 SELECTING THE FUEL SOURCE
- 4 STARTING PROCEDURE
- 5 SHUTDOWN PROCEDURE
- 6 GENERATOR MECHANICAL SPECIFICATIONS
- 7 MAINTENANCE SCHEDULE
- 8 Documents / Resources
 - 8.1 References
- 9 Related Posts

TOOLS YOU WILL NEED



Fresh clean unleaded gasoline (not included)



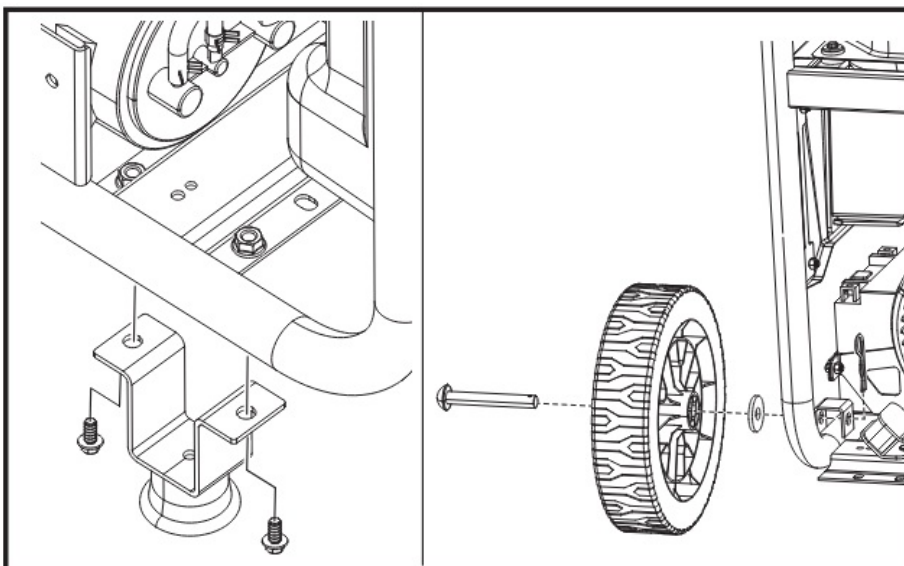
Funnel (included)



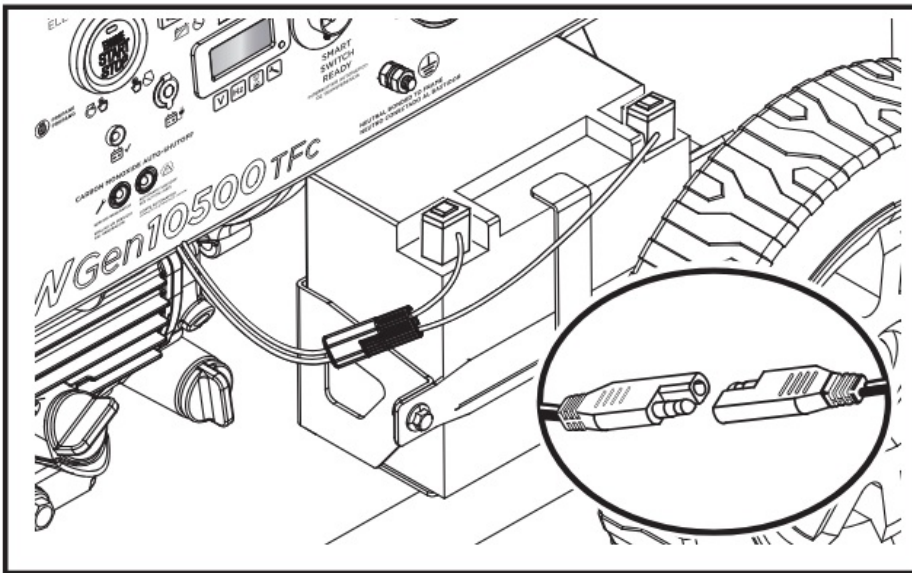
4-stroke engine oil (included)

BEFORE STARTING

1. Install the feet and wheels
 - a. Secure feet to the bottom of the frame using bolts



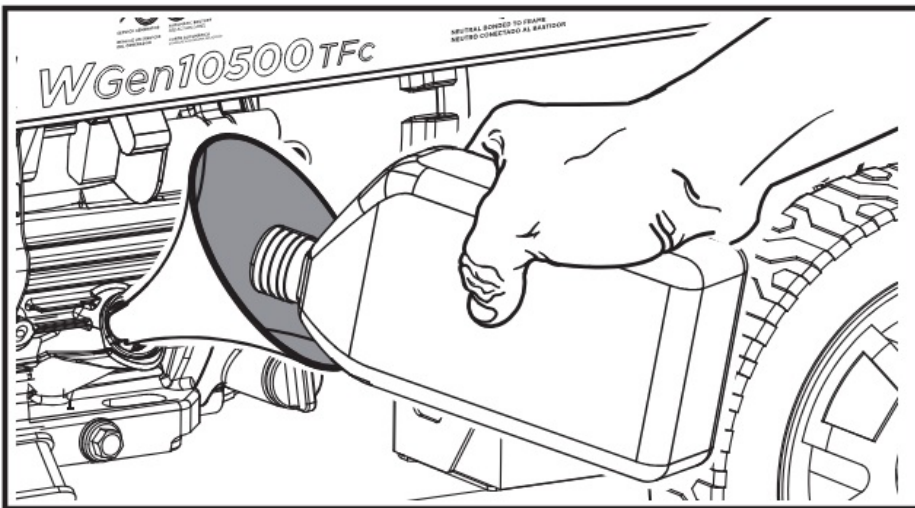
- b. Insert axles through wheels, washers, and frame; secure with hitchpins



2. Connect the battery cables

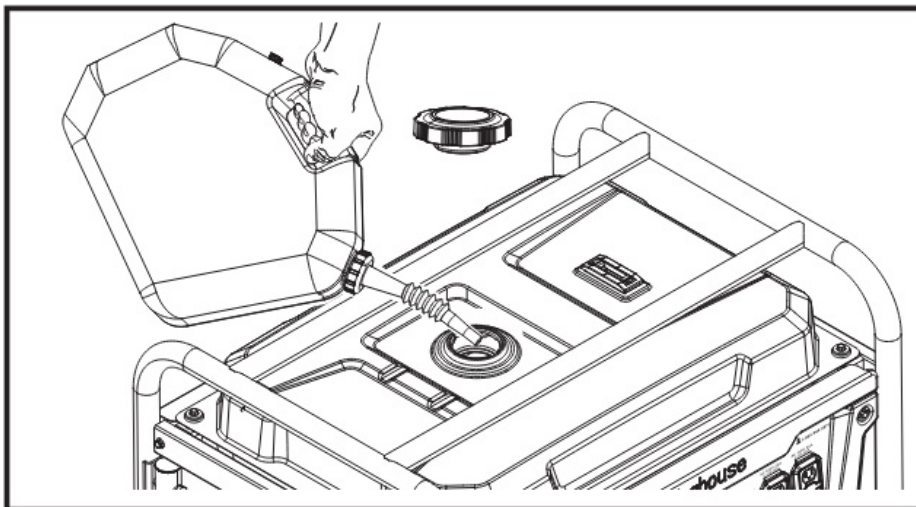
3. Add engine oil

Slowly add 4-cycle engine oil until full. Do not overfill.

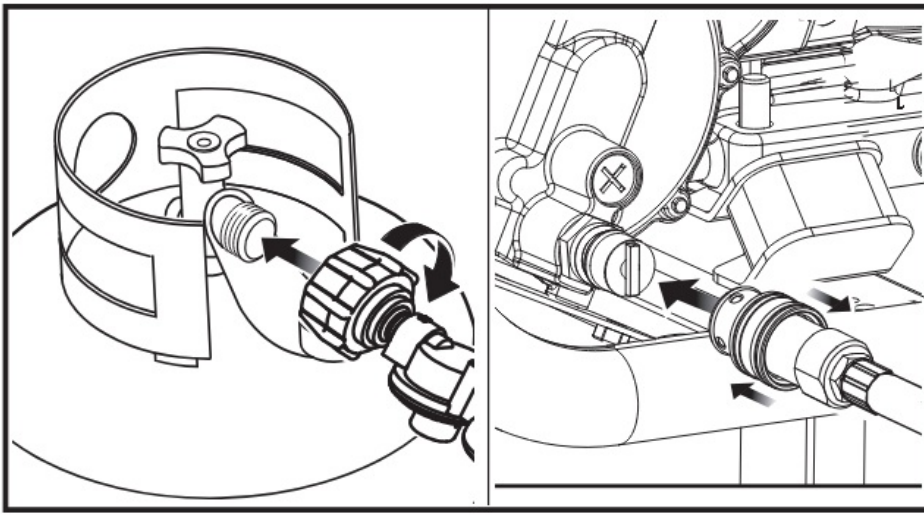


4. Add gasoline or connect a fuel source

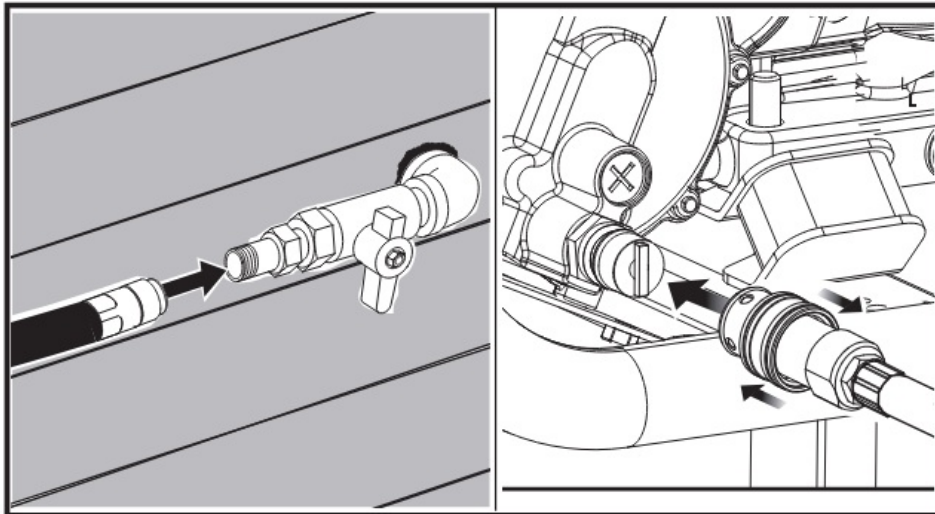
a. Gasoline – Unscrew gas cap and slowly add gasoline. Do not overfill.




b. Propane – Connect the LPG/propane hose to a propane cylinder and the generator.

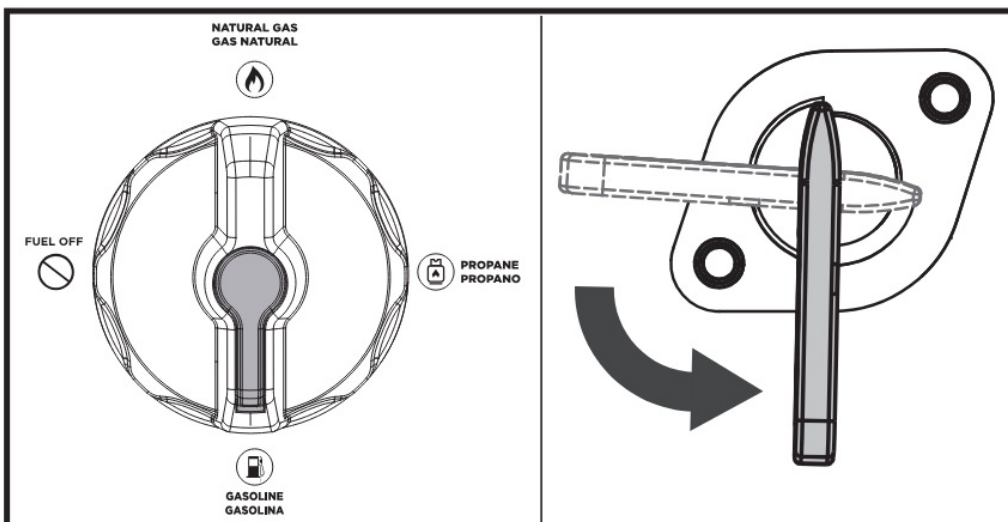


c. Natural Gas – Connect the natural gas hose to a natural gas supply line and the generator.

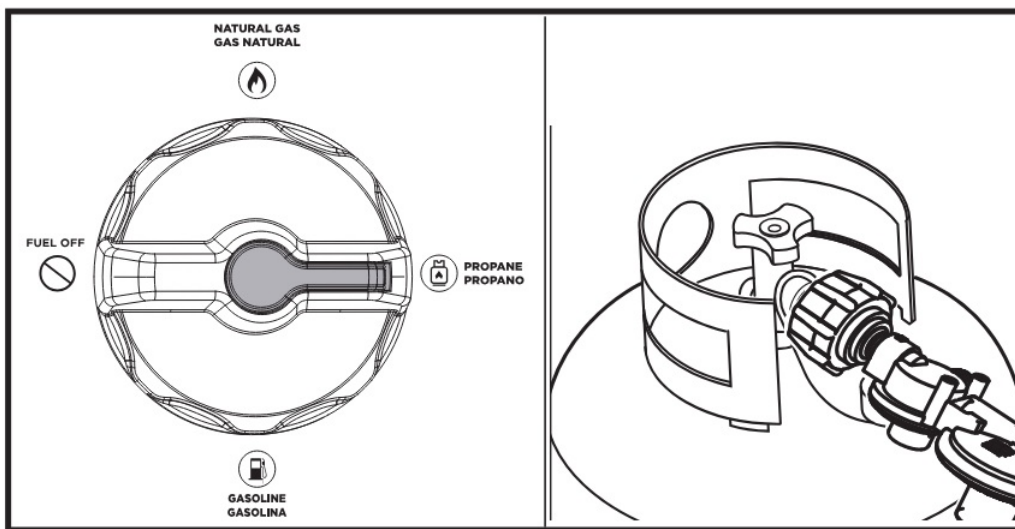


SELECTING THE FUEL SOURCE

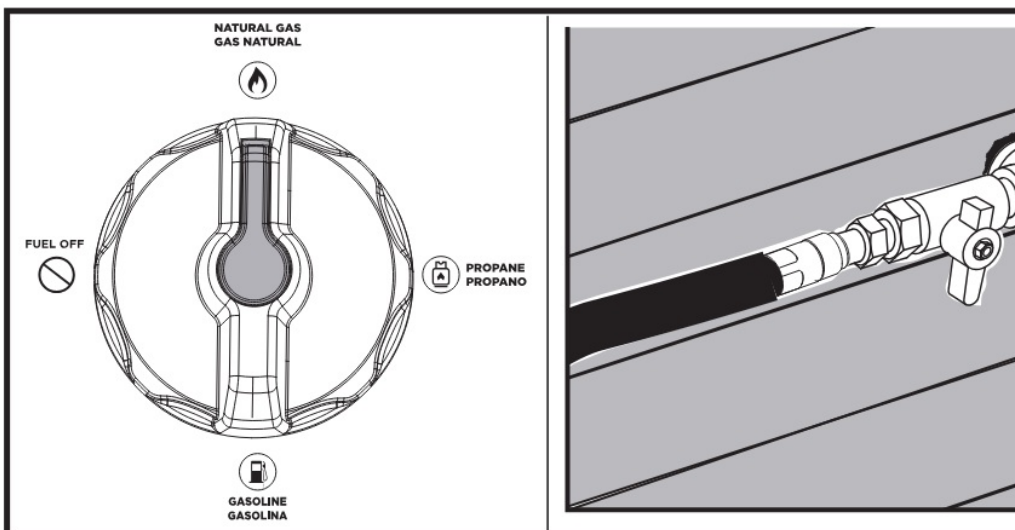
1. For gasoline, rotate the fuel selector switch to GASOLINE  and open the fuel valve.



2. For propane, rotate the fuel selector switch to PROPANE and open the propane cylinder valve.

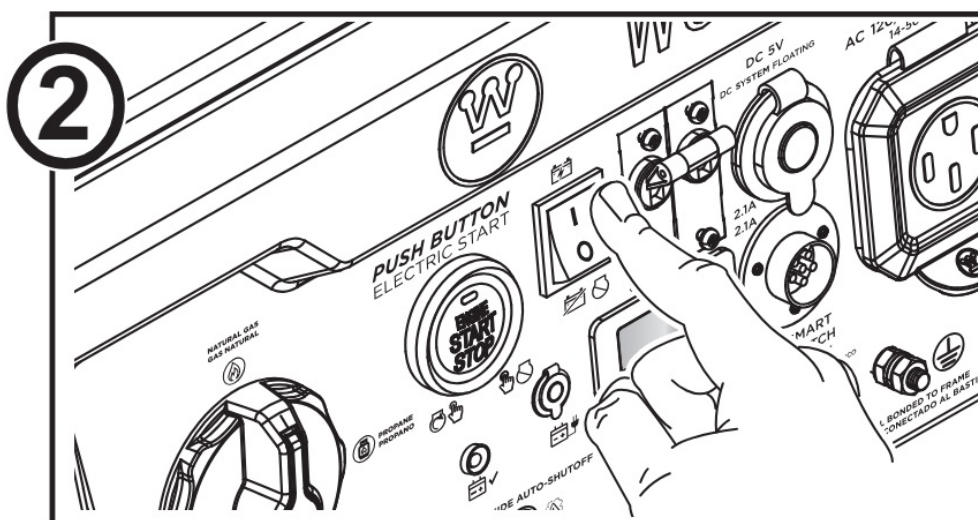


- For propane, rotate the fuel selector switch to NATURAL GAS and open the propane cylinder valve.



STARTING PROCEDURE

- Make sure all loads are disconnected from the generator and select a fuel source.
- Push the battery switch to the ON position

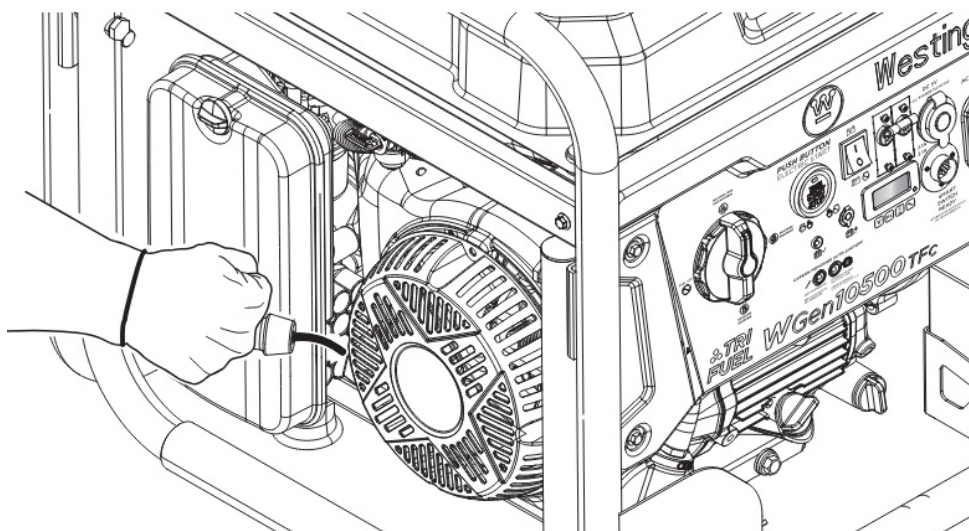
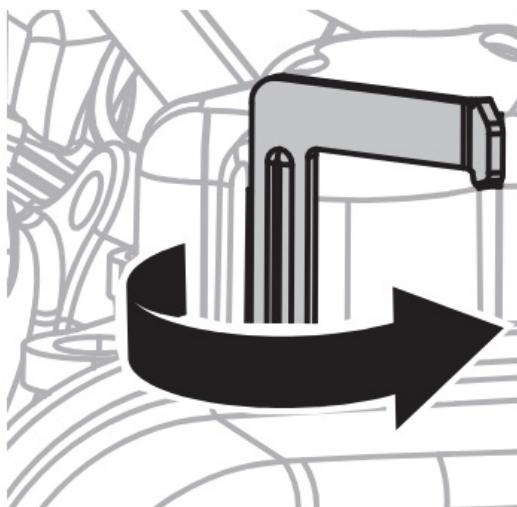


- For manual start, move the choke to the off/ cold start position and pull the recoil handle repeatedly until the generator starts. If the engine is warm, move the choke towards the on/warm start position (about 2/3 of the way).

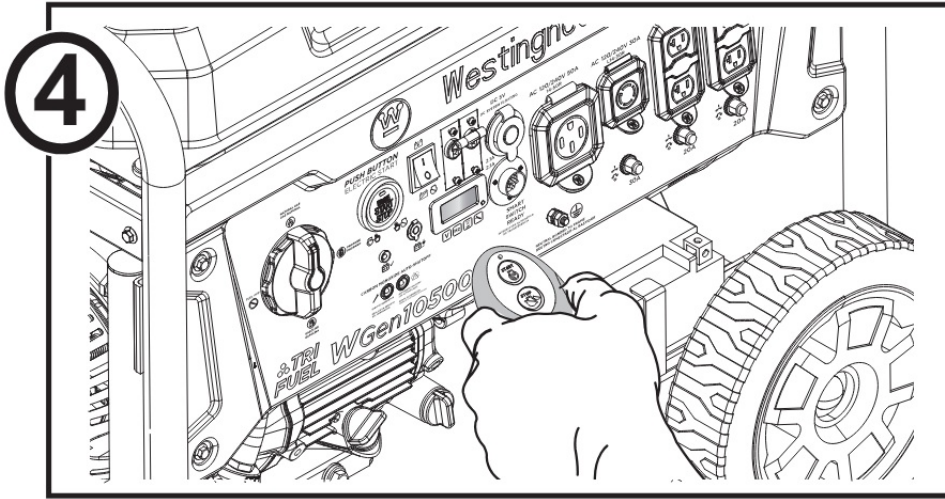
On/Warm Start



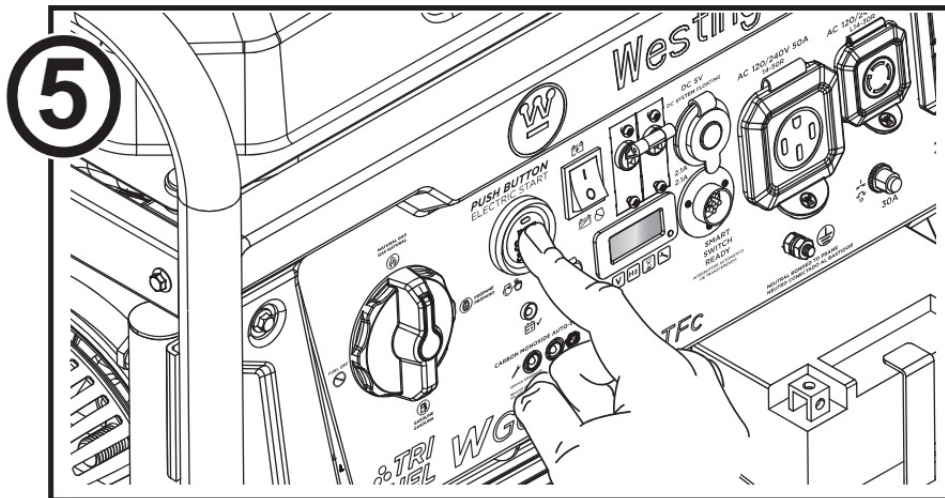
Off/Cold Start



4. For remote start, push and hold the start button on the key fob for two seconds



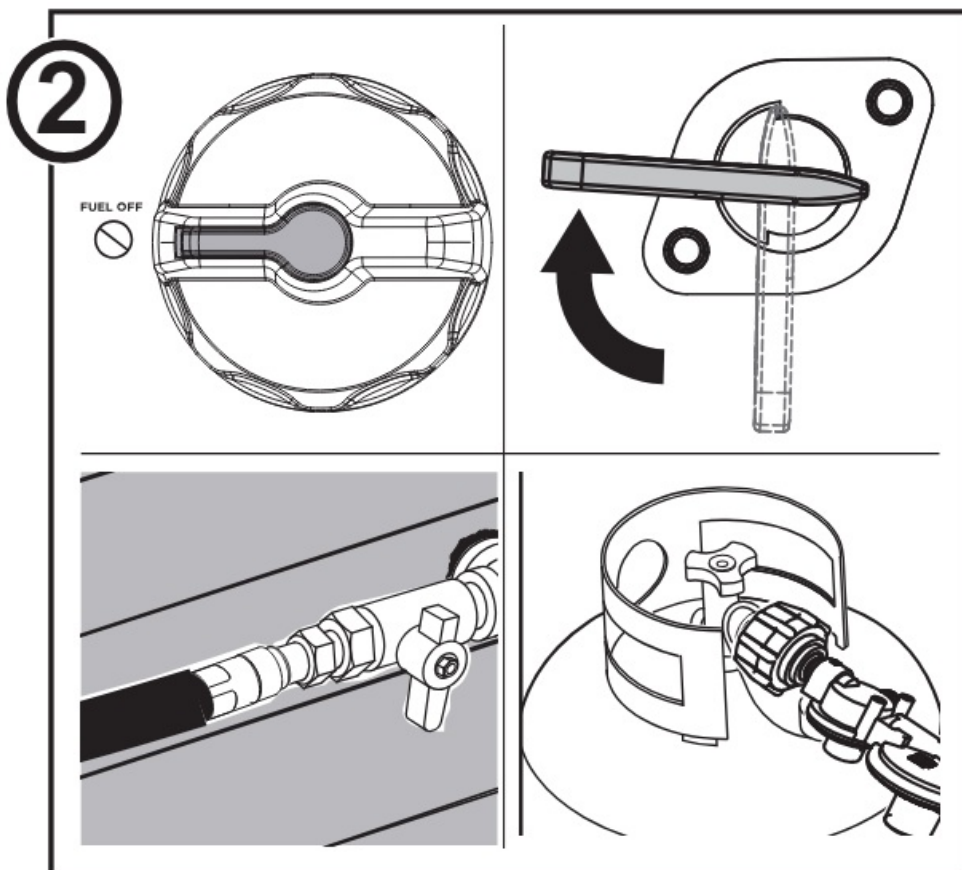
5. For push button start, push and hold the engine START/STOP button for two seconds



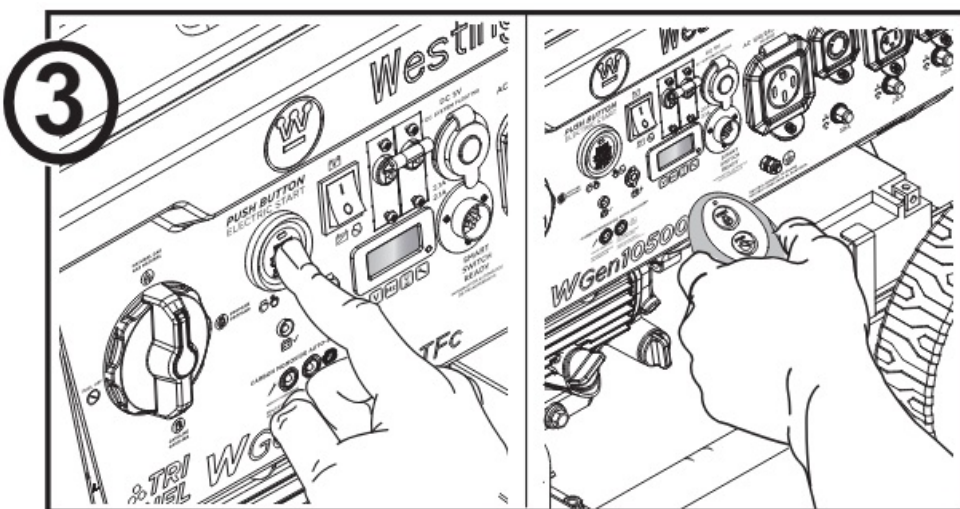
6. Ensure breakers are ON and connect loads to the control panel receptacles

SHUTDOWN PROCEDURE

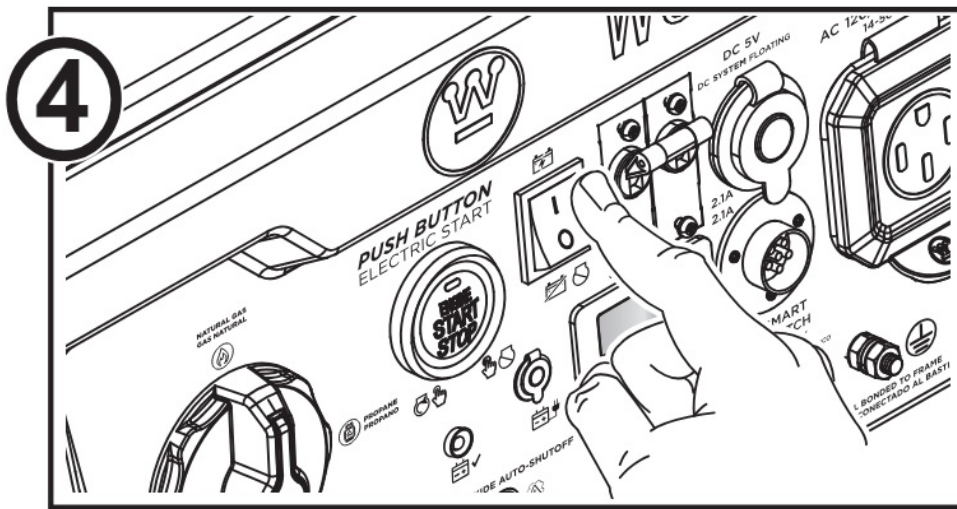
1. Make sure all loads are disconnected from the generator.
2. Turn the fuel selector switch to FUEL OFF and stop the flow of fuel by closing the fuel valve, cylinder valve, or the valve on the natural gas hose.



3. Press and hold the engine START/STOP button or the stop button on the key fob for one second to stop the generator.



4. Push the battery switch to the OFF position



GENERATOR MECHANICAL SPECIFICATIONS

Model Number	Running Watts	Peak Watts	Fuel Tank Size (L/G)	Rated Speed (RPM)	Ignition Type	Engine Disp (cc)	Oil Capacity (L)	Oil	THD
WGen10500TFc	10500 Gasoline	13500 Gasoline	Fuel Tank Size (L/G)	3600	TCI	500	1.2	10W30	≤ 23%

MAINTENANCE SCHEDULE

Following the maintenance schedule is important to keep the generator in good operating condition. The following is a summary of maintenance items by periodic maintenance intervals. Refer to the Maintenance section in the Owners Manual to find out how to properly perform maintenance.

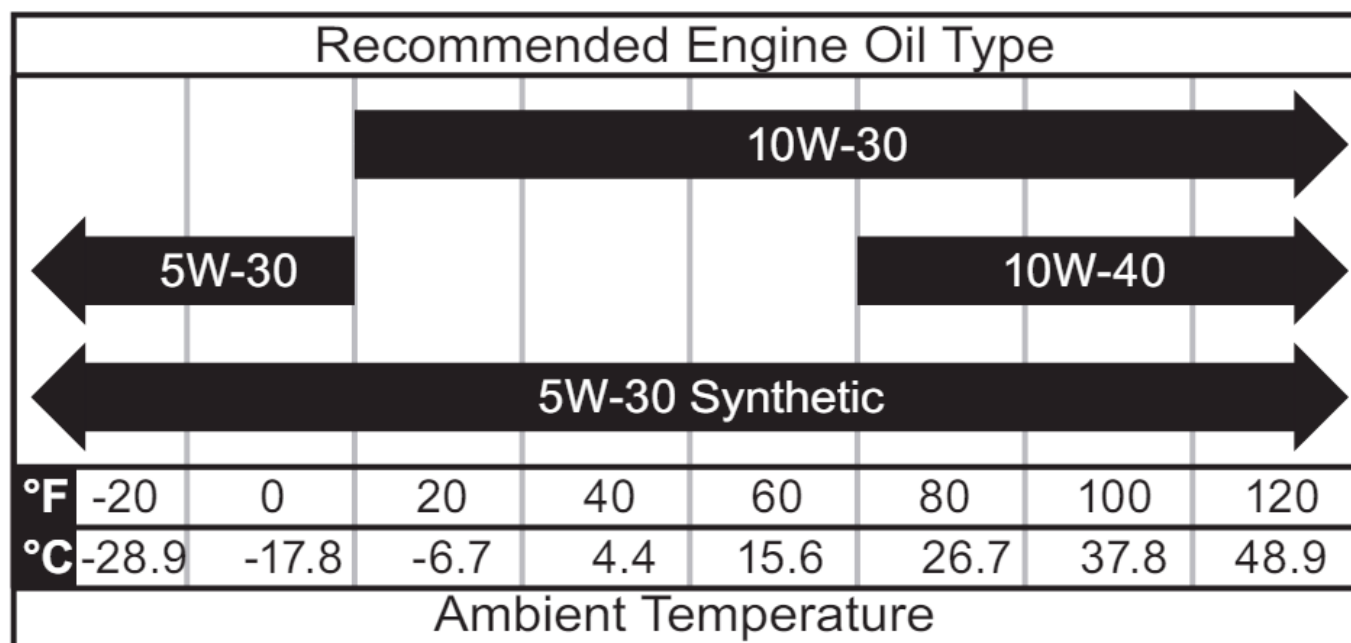
TABLE 1: MAINTENANCE SCHEDULE

Maintenance Item	Before Every Use	After First 25 Hours or First Month of Use	After 50 Hours of Use or Every 6 Months	After 100 Hours of Use or Every 6 Months	After 300 Hours of Use or Every Year
Engine Oil	Check Level	Change ¹	Change	—	—
Air Filter	—	—	Clean ²	—	Replace
Spark Plug	—	—	—	Check/Clean	Replace
Spark Arrestor	—	—	—	Check/Clean	—
Fuel Filter	—	—	—	Replace ³	—
Valve Clearance	—	—	—	Inspect/Adjust ³	—

1. Change oil every month when operating under heavy load or in high temperatures.
2. Clean more often under dirty or dusty conditions.
3. Recommended service by authorized Westinghouse dealer.

ENGINE OIL

Only use 4-stroke/cycle engine oil. **NEVER USE 2-STROKE/CYCLE OIL**



SPARK PLUG REPLACEMENT

Model Number	Torch	Bosch	NGK
WGen10500TFc	F7TC	W7DC	BP6ES



DANGER

Using a generator indoors **CAN KILL YOU IN MINUTES**. Generator exhaust contains carbon monoxide. This is a poison you cannot see or smell.



NEVER use inside a home or garage,
EVEN IF doors and windows are open.



Only use **OUTSIDE** and far away from windows, doors, and vents.

For customer support, scan the QR code.



125358 03/05/24
WGen10500TFc Rev 03

Questions? Call 855.944.3571 or
visit wpowereq.com/pages/support

¿Tiene preguntas? Llame al 855.944.3571 o visite wpowereq.com/pages/support
Des questions? Tél phoner au 855 944-3571 ou visitez wpowereq.com/pages/support



Documents / Resources



[Westinghouse F7TC Standard Powersports Spark Plug](#) [pdf] User Guide
F7TC Standard Powersports Spark Plug, F7TC, Standard Powersports Spark Plug,
Powersports Spark Plug, Spark Plug, Plug

References

- [User Manual](#)

[Manuals+](#), [Privacy Policy](#)

This website is an independent publication and is neither affiliated with nor endorsed by any of the trademark owners. The "Bluetooth®" word mark and logos are registered trademarks owned by Bluetooth SIG, Inc. The "Wi-Fi®" word mark and logos are registered trademarks owned by the Wi-Fi Alliance. Any use of these marks on this website does not imply any affiliation with or endorsement.