




## westfalia WAMFW18 18V Multi-Function Tool User Manual

[Home](#) » [Westfalia](#) » westfalia WAMFW18 18V Multi-Function Tool User Manual 

### Contents

- [1 westfalia WAMFW18 18V Multi-Function Tool](#)
- [2 Original Instructions](#)
- [3 SPECIFICATION](#)
  - [3.1 SAFETY NOTES](#)
  - [3.2 Additional Battery and Charger Safety Notes](#)
  - [3.3 EU DECLARATION OF CONFORMITY](#)
- [4 CUSTOMER SERVICES](#)
- [5 DISPOSAL](#)
- [6 Documents / Resources](#)
  - [6.1 References](#)
- [7 Related Posts](#)



**westfalia WAMFW18 18V Multi-Function Tool**



## Original Instructions



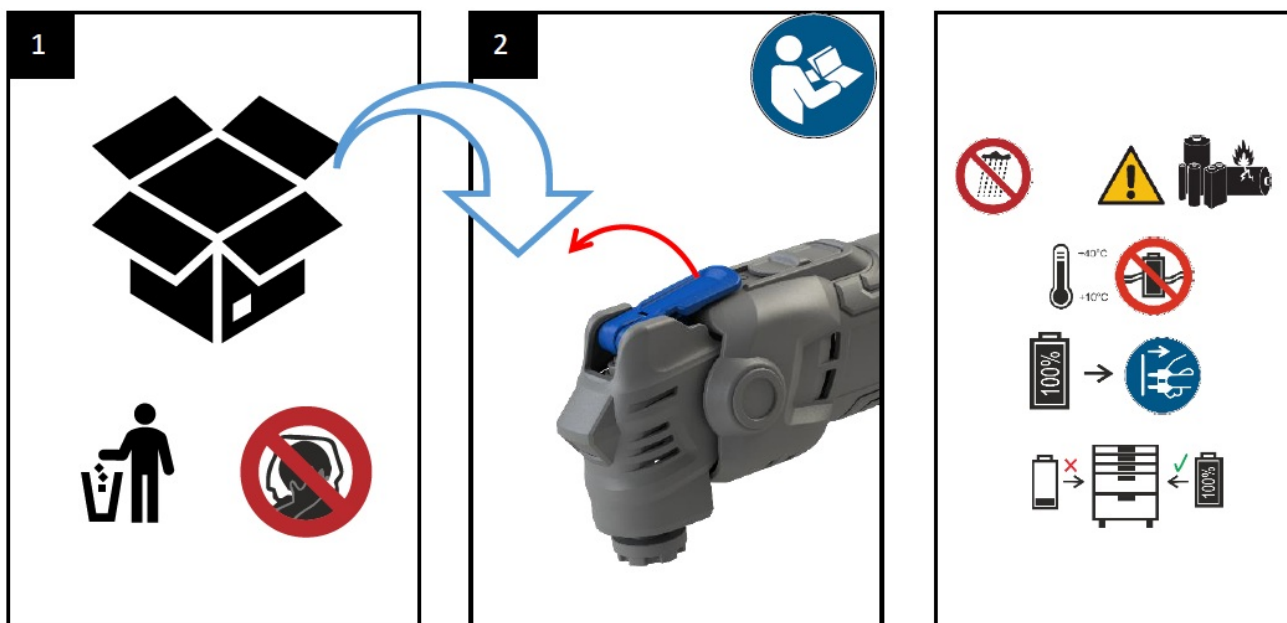
1. Battery Bay

2. Variable speed dial
3. Drive spindle
4. Sanding pad
5. Quick release
6. Power switch
7. Handle
8. Plunge blade for wood
9. Scraper
10. Sanding pad

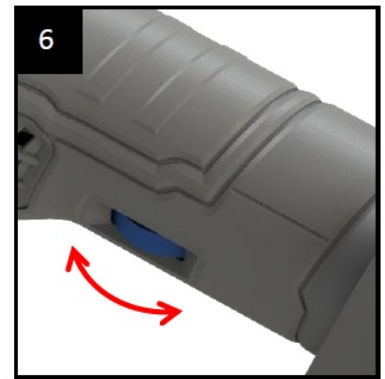
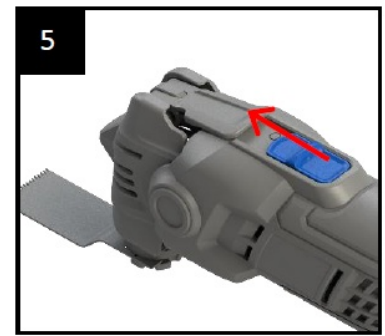
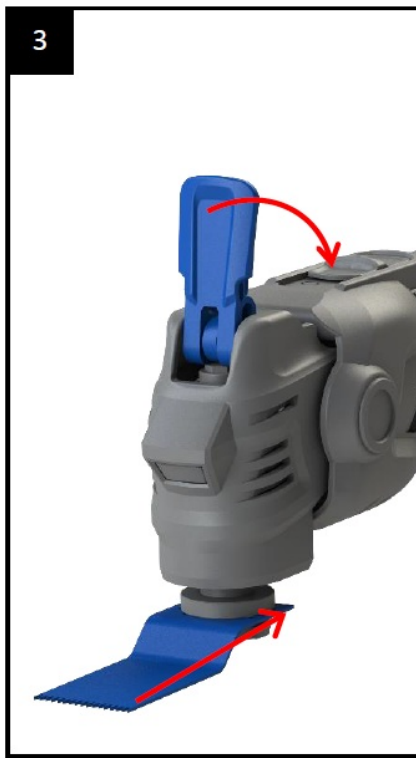
**Dear Customers,**

Instruction manuals provide valuable hints for using your new device. They enable you to use all functions, and they help you avoid misunderstandings and prevent damage. Please take the time to read this manual carefully and keep it for future reference.

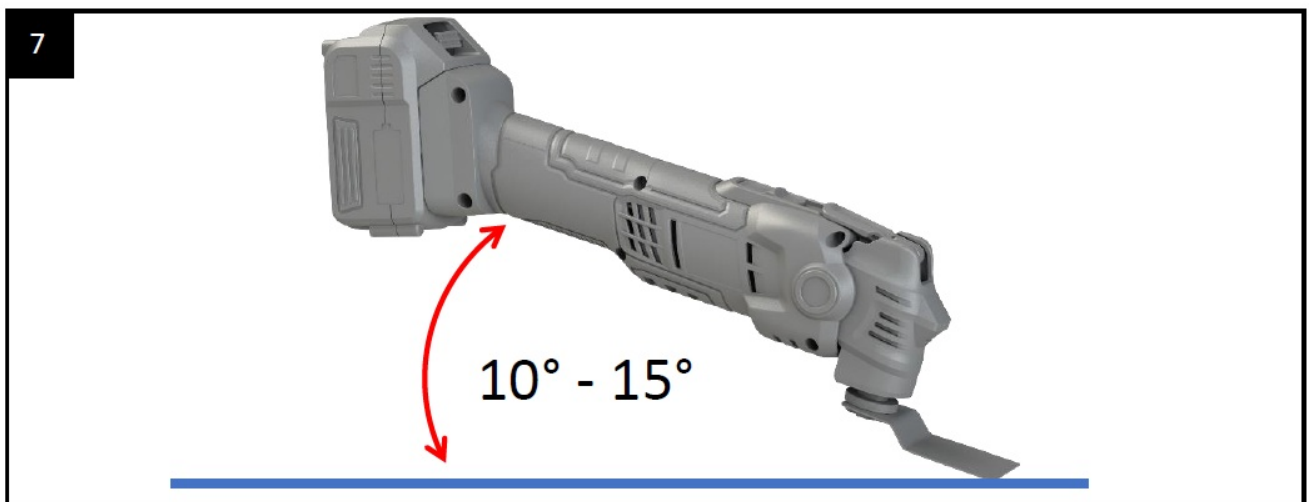
1. Unbox device
2. Open locking lever



3. Insert and lock tool
4. Insert the battery\*
5. Turn on
6. Set speed



7. Angle of attack for cockroaches



\*Not included

## SPECIFICATION

<b>Nominal speed</b>	5000-18000 m/min <sup>-1</sup>
<b>Dimensions</b>	305 x 70 x 97 mm
<b>Weight (Device)</b>	1119 g
<b>Sound Pressure Level</b> Sawing mode (straight) Sawing mode (semic.) Scraping mode (knife) Sanding mode (triangle)	$L_{pA} = 79,8 \text{ dB(A)}$ $L_{pA} = 80,4 \text{ dB(A)}$ $L_{pA} = 76,2 \text{ dB(A)}$ $L_{pA} = 83,4 \text{ dB(A)}$ $K_{pA} = 3 \text{ dB(A)}$
<b>Sound Power Level</b> Sawing mode (straight) Sawing mode (semic.) Scraping mode (knife) Sanding mode (triangle)	$L_{wA} = 90,8 \text{ dB(A)}$ $L_{wA} = 91,4 \text{ dB(A)}$ $L_{wA} = 87,2 \text{ dB(A)}$ $L_{wA} = 94,4 \text{ dB(A)}$ $K_{wA} = 3 \text{ dB(A)}$
<b>Hand Arm Vibration</b> Sawing mode (straight) Sawing mode (semic.) Scraping mode (knife) Sanding mode (triangle)	$a_h = 4,55 \text{ m/s}^2$ $a_h = 2,39 \text{ m/s}^2$ $a_h = 3,90 \text{ m/s}^2$ $a_h = 2,45 \text{ m/s}^2$ $K = 1,5 \text{ m/s}^2$
<b>Battery voltage</b>	18 V

## SAFETY NOTES

Please note the included General Safety Notes and the following safety notes to avoid malfunctions, damage or physical injury.

Please also observe the safety notes in the manuals for battery and charger.

- Please read this manual carefully and use the unit only according to this manual.
- When using the tool, use safety equipment including dust mask and ear protection. If operating the tool causes discomfort in any way, stop immediately and review your method of use.
- Dispose of used packaging material carefully or store it out of the reach of children. There is a danger of suffocation!
- Persons with limited physical, sensorial or mental abilities are not allowed to use the unit, unless they are

supervised and briefed for their safety by a qualified person.

- Battery chargers are for indoors use only. Ensure that the power supply and charger are protected against moisture at all times.
- Wear protective, cut-proof gloves when changing blades and accessories. Some blades and accessories can be very sharp. Scraper blades sharpen as they are used. Blades and accessories shortly after use can be very hot, allow to cool.
- Keep your workplace clean. Dusts created from different materials including woods and metals can be highly flammable. Dust from light alloys including magnesium can burn or explode easily.
- Do not treat the work surface with fluids containing solvents. If such fluids become warm from scraping, toxic vapours may be produced, or surfaces may catch fire.
- Only change accessories and blades or perform maintenance with the tool disconnected from its power supply, either mains connection or battery. If the tool features a captive battery in a charged state take extra care not to switch it on accidentally when changing accessories or blades.
- Always use accessories or blades that are approved by the manufacturer or meet the specification of your power tool, this includes being compatible in size and speed. DO NOT try to cut material thicker than the capacity stated in the specification.
- Only use an adapter for using different accessories or blades if the adapter is specifically designed and approved by the manufacturer of your power tool.
- Do not modify accessories or blades so they work with power tools they were not intended to work with or for uses that they were never designed for.
- Do not use accessories or blades that are damaged, bent, chipped, cracked, heavily corroded or excessively worn. Such accessories can break apart in use causing injury to the operator. Always inspect accessories or blades before use and discard immediately if not in good condition. Never use blades that are worn to a dull edge. Always use sharp blades.
- Always ensure all accessories or blades are securely attached to the tool before use and the securing tool is removed prior to use.
- Do not attempt to free a jammed blade or accessory until the power tool has been disconnected from power.
- Inspect the workpiece before use to make sure it is in the correct condition for the fitted accessory or blade. Remove all nails, staples and other embedded objects prior to starting work.
- Any freely movable workpieces should be secured with a clamp or vice before starting work.
- Always ensure that the lighting is adequate in the work area. Never remove your safety goggles or glasses to improve your view instead increase the level of lighting or move the lighting so it specifically illuminates the work area correctly.
- Do not operate the power tool near flammable materials. Be especially careful when cutting wood and metal. Sparks from metal cutting are a common cause of wood dust fires.
- Never start the power tool while the blade or accessory is in contact with the workpiece, and always allow the power tool to reach its full speed before making contact with the workpiece. Use the variable speed control of the tool (if fitted) to start the tool at the correct speed for the accessory or blade fitted.
- Do not exert additional pressure on the body of the tool: allow the blade or accessory to do the work. By not exerting additional pressure you maintain a safer stronger grip on the power tool when it breaks through the material, as well as reducing wear on the power tool which will extend the power tool's service life. Additional pressure may also bend or twist the accessory or blade which may cause it to break and cause injury. If the power tool allows for being held with one or two hands hold with two hands whenever possible. Always exercise caution when handling this power tool.

- Sawing, cutting and abrasive actions create heat. This may affect the workpiece and power tool. Always monitor the heat level and in the event of excessive heat switch off the power tool and allow to cool before restarting work. Some power tools depending on design may be more quickly and effectively cooled by running at high speed without load.
- The power tool will draw in dust through the vents on its body. Excessive accumulation of powdered metal may cause an electrical hazard and destroy the tool. Always ensure the environment dust level is safe for the tool and ensure the vents are not blocked.
- For mains-operated power tools, ensure the cable of the power tool is Always kept behind the tool and never close to where the accessory or blade is operating.
- Do not reach under the workpiece, rest the workpiece on your body, or hold the workpiece while working on it, as contact with the blade or accessory protruding from the workpiece can result in serious injury.
- Anti-vibration gloves should be worn when operating power tools that produce large amount of vibration, especially during long-term use.
- For power tools with a rotating mechanism and accessories ensure the operator is not wearing clothes or gloves with frayed threads, cords etc. that could be entangled in the rotating mechanism dragging the operator's hand into the rotating accessory causing injury. Always wear tight-fitting work clothes, safety shoes. Remove jewellery and secure long hair. Never wear fabric-based gloves that can produce strands of material when operating this type of power tool.
- Do not allow sanding sheets to wear away on the sanding pad. This will damage the surface of the pad requiring replacement and may cause parts of the sanding sheet to fly off the pad, causing operator injury.
- Do not touch the moving sanding sheet.
- Wire brush bristles are thrown by the brush even during ordinary operation. Do not overstress the wires by applying excessive load to the brush. The wire bristles can easily penetrate light clothing and skin.
- Periodically check all nuts, bolts and other fixings and tighten where necessary.

**Note:** The tool must only be used for its intended purpose. Any use other than those mentioned in this manual will be considered a case of misuse.

#### **Additional Battery and Charger Safety Notes**

**WARNING:** Li-Ion batteries, if incorrectly used, stored or charged are a fire, burn and explosion hazard.

#### **Use the battery charger correctly**

- Refer to the section of this manual relating to use of the battery charger before attempting to charge the battery.
- Do not attempt to use the charger with any batteries other than those supplied. Failure to follow these instructions may cause overheating or fire.
- When battery pack is not in use, make sure the battery pack cannot be shorted accidentally. Keep the battery clean at all times. Keep it away from other metal objects, like paper clips, coins, keys, nails, screws or other small metal objects that can make a connection from one terminal to another. Shorting the battery terminals together may cause burns or a fire.
- Allow batteries to cool for 15 minutes after charging or heavy use. Failure to follow these instructions may cause overheating or fire.
- Use only chargers recommended by the manufacturer to charge the batteries. If a charger is not suitable for a

certain kind of battery there is a risk of fire. Only use Li-Ion batteries provided with a product or specifically designed to be compatible.

- Use power tools only with specifically designated battery packs. Use of any other battery packs may create a risk of injury and fire.
- The unit is designed for operation in altitudes of up to 2000 m above sea level.
- Keep the battery out of reach of children.
- When not in use batteries should be stored at room temperature (approximately 20° C).
- Do not open, disassemble, crush, heat above 60° C or incinerate. Do not dispose of in fire or similar.
- Recharge only with the charger specified by the manufacturer. A charger that is suitable for one type of battery pack may create a risk of fire when used with another battery pack.
- If liquid contacts eyes, additionally seek medical help. Liquid ejected from the battery may cause irritation or burns.
- Have your power tool serviced by a qualified repair person using only identical replacement parts. This will ensure that the safety of the power tool is maintained.



Batteries do not belong in the household garbage.



For battery disposal please check with your local council.

#### **EU DECLARATION OF CONFORMITY**

We, the Westfalia Werkzeugcompany, Werkzeugstraße 1, D-58093 Hagen, declare by our own responsibility that the product

- 18 V Multi-function tool WAMFW18
- Article No. 97 75 82

is according to the basic requirements, which are defined in the European Directives and their amendments.

#### **2011/65/EU**

Restriction of the Use of certain hazardous Substances in electrical and electronic Equipment (RoHS)

#### **2014/30/EU**

Electromagnetic Compatibility (EMC)

EN 55014-1:2017+A11, EN 55014-2:1997+AC+A1+A2,

EN 61000-3-2:2014, EN 61000-3-3:2013

#### **2006/42/EC**

Machinery

EN 62841-1:2015+AC, EN 62841-2-1:2018+A11

The technical documentations are on file at the QA department of the Westfalia Werkzeugcompany.

Hagen, 13th of September, 2022

Thomas Klingbeil,

Qualitätsbeauftragter / QA Representative



## CUSTOMER SERVICES

Westfalia

Wydenhof 3a

CH-3422 Kirchberg (BE)

**Telefon:** (034) 4 13 80 00

**Telefax:** (034) 4 13 80 01

Internet: [www.westfalia-versand.ch](http://www.westfalia-versand.ch)

## DISPOSAL


**Dear Customer,**

Please help avoid waste materials.

If you at some point intend to dispose of this article, then please keep in mind that many of its components consist of valuable materials, which can be recycled. Please do not discharge it in the rubbish bin, but check with your local council for recycling facilities in your area.

Gestaltung urheberrechtlich geschützt

## Documents / Resources

	<p><a href="#">westfalia WAMFW18 18V Multi-Function Tool</a> [pdf] User Manual WAMFW18 18V Multi-Function Tool, WAMFW18, 18V Multi-Function Tool, Function Tool</p>
--	---

## References

- [W Westfalia Versand Österreich | Werkzeug ✓ Garten ✓ Technik ✓ & mehr](#)
- [W Westfalia Versand Schweiz mobil bei Westfalia Versand Schweiz](#)
- [W Westfalia Versand Deutschland mobil bei Westfalia Versand Deutschland](#)