



westfalia 960800 Socket heater With remote control Instruction Manual

[Home](#) » [Westfalia](#) » westfalia 960800 Socket heater With remote control Instruction Manual 

Contents

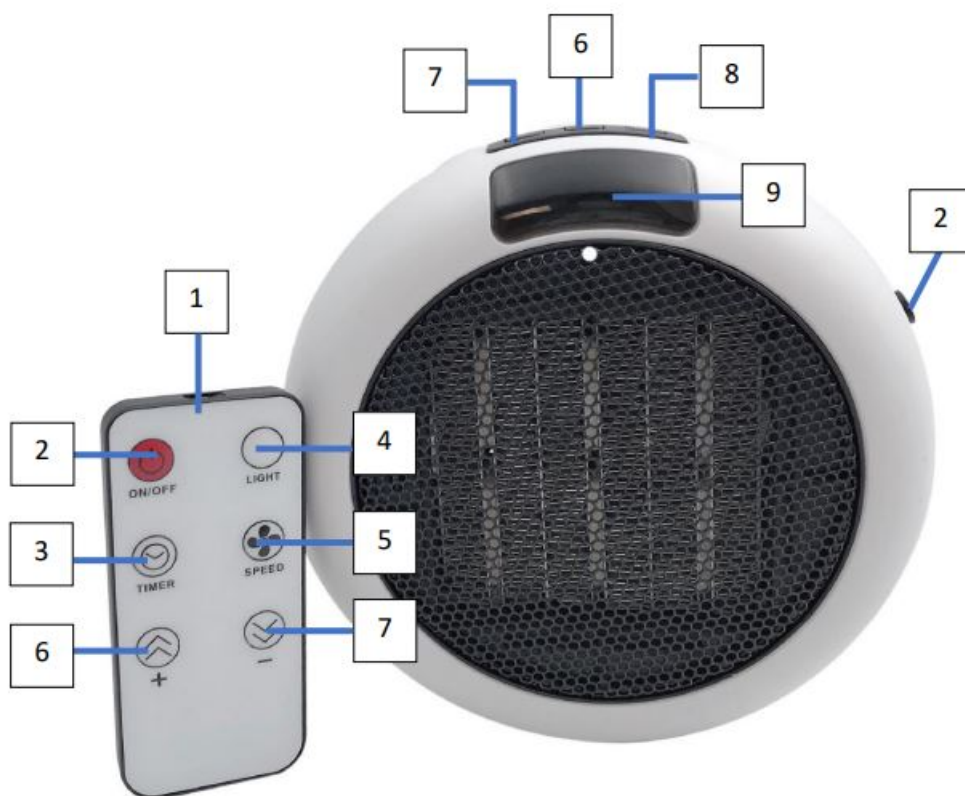
- [1 westfalia 960800 Socket heater With remote control](#)
- [2 OVERVIEW](#)
- [3 TECHNICAL DATA](#)
- [4 SAFETY NOTES](#)
- [5 EC DECLARATION OF CONFORMITY](#)
- [6 CUSTOMER SERVICES](#)
- [7 Documents / Resources](#)
 - [7.1 References](#)

Westfalia®

westfalia 960800 Socket heater With remote control



OVERVIEW



1. Remote control
2. ON / OFF switch
3. Timer button
4. Display ON / OFF
5. Speed regulator
6. Setting „+“

7. Setting „-“
8. Menu selection
9. Display

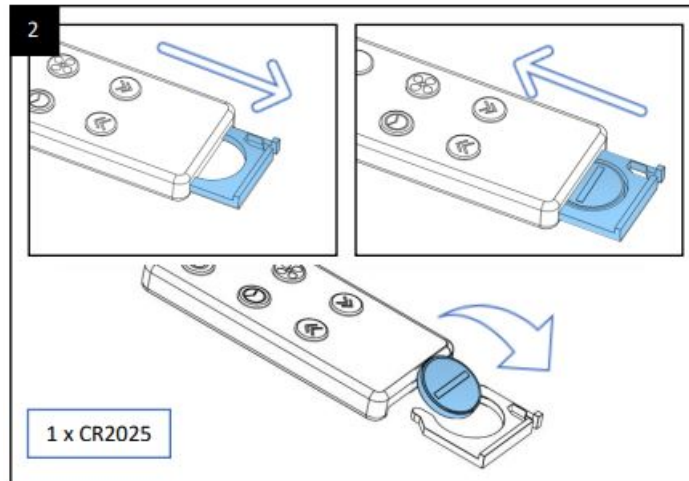
Dear Customers,

Instruction manuals provide valuable hints for using your new device. They enable you to use all functions, and they help you avoid misunderstandings and prevent damage. Please take the time to read this manual carefully and keep it for future reference.

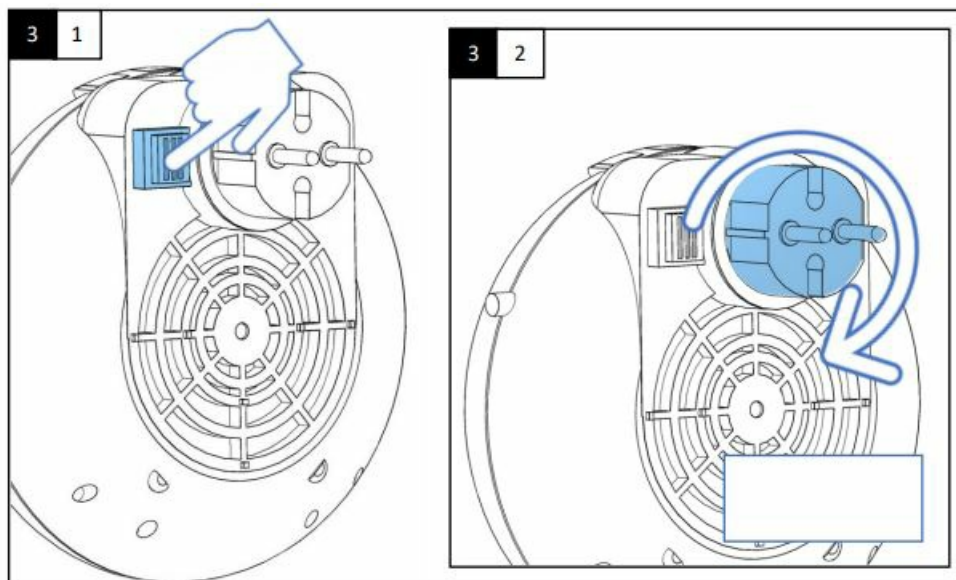
1. Unbox device



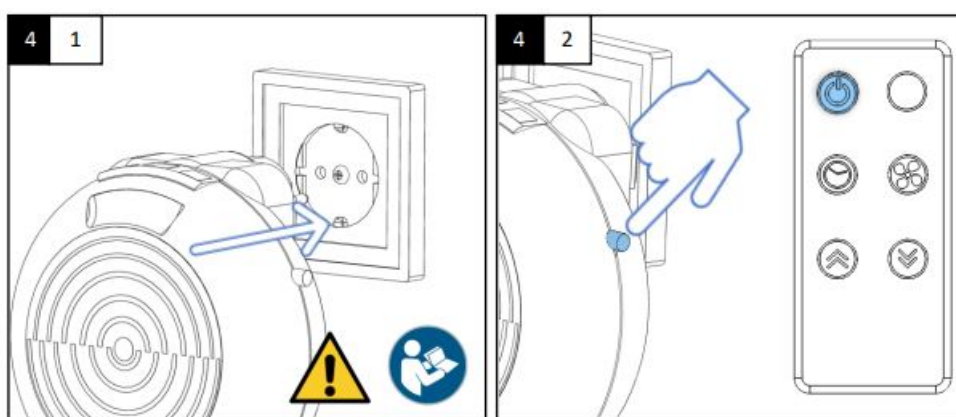
2. Insert battery



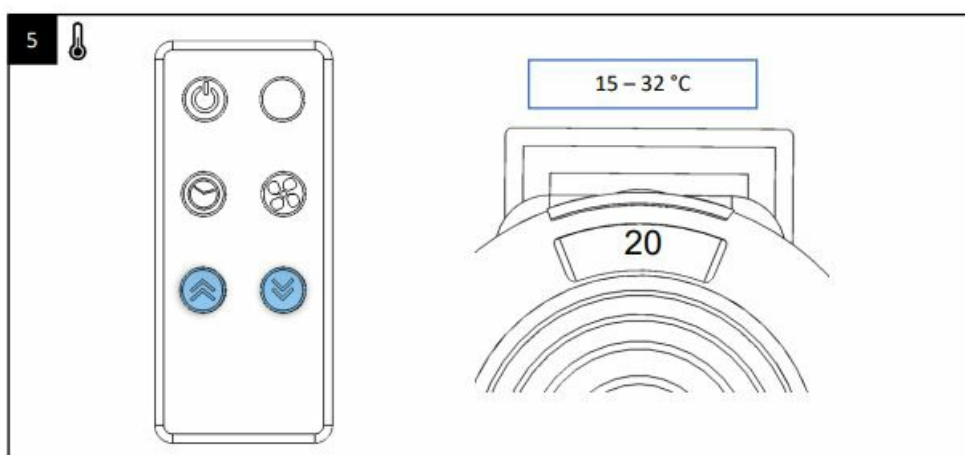
3. Rotate plug



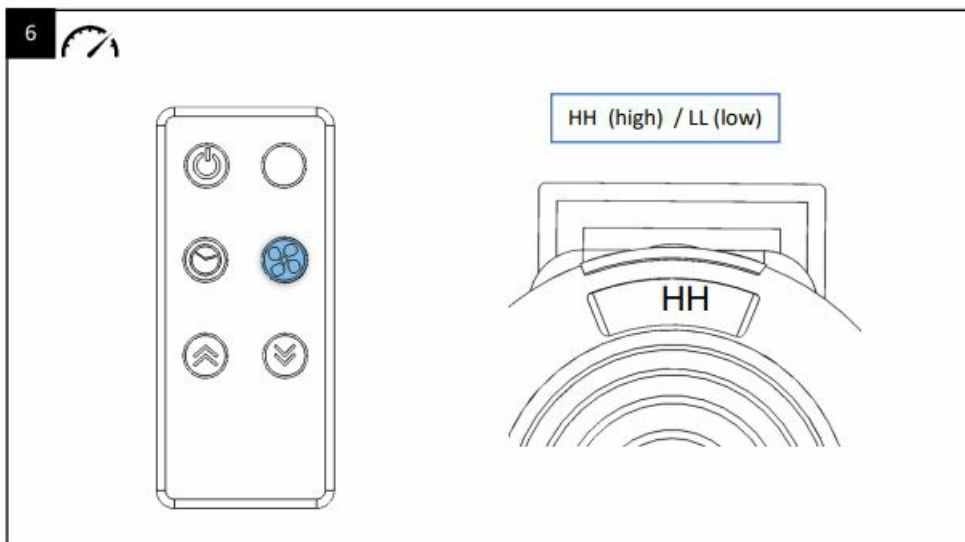
4. Turn on device



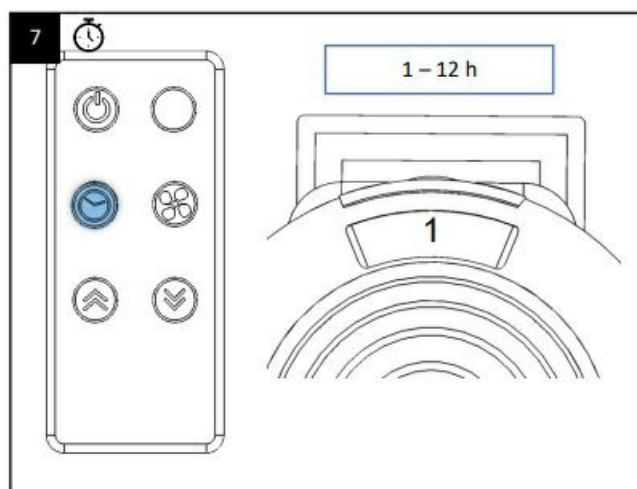
5. Set temperature



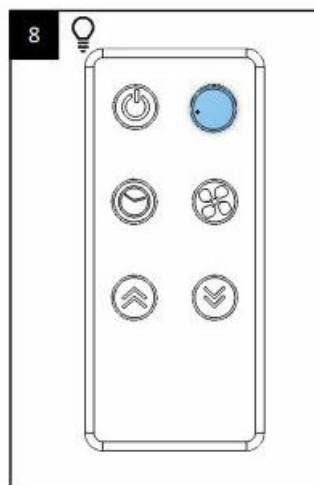
6. Set speed



7. Set timer



8. Turn display on / off



TECHNICAL DATA

- **Rated voltage** 220-240 V~ 50 – 60 Hz
- **Rated capacity;** 600 W
- **Speed settings:** 2 (HH & LL)
- **Temperature setting** 15 bis 32°C
- **Insulation class:** II

SAFETY NOTES

- Please note the included General Safety Notes and the following safety notes to avoid malfunctions, damage or physical injury.
- Please read this manual carefully and use the unit only according to this manual.
- Dispose of used packaging material carefully or store it out of the reach of children. There is a danger of suffocation!
- Make sure the voltage corresponds to the type label on the unit.
- Persons with limited physical, sensorial or mental abilities are not allowed to use the unit, unless they are supervised for their safety by a qualified person or are briefed by the responsible person how to use the unit. Keep the unit out of reach of children.
- The unit is equipped with a safety switch and will turn off when tilted in excess of 45° in any direction.
- During operation the lower distance pieces must be placed against the wall to make sure the heater sits in the socket securely.
- Do not leave the unit for long time unsupervised during operation.
- Always use a socket earthed according to the regulations.
- The heater is hot when in use. To avoid burns, do not let bare skin touch hot surface. Keep combustible materials, such as furniture, pillows, bedding, papers, clothes, and curtains at least 50 cm away from the heater.
- Always unplug the heater while it is not in use or when you clean it.
- Always turn the heater off before unplugging it.
- Do not operate the heater with a damaged plug or power cord or after the heater malfunctions, has been dropped or damaged in any manner.
- Do not use the heater outdoors.
- The heater is not intended for use in wet or damp conditions.
- The heater must not be used in bathrooms, showers, pool facilities, laundry rooms or in other similar indoor rooms. Never place the unit near bathtubs or other water tanks.
- Make sure that water cannot enter the interior of the heater.
- Always place the heater on a firm, even surface.
- Do not operate the heater in areas with fire hazard, such as garages, stables or wooden shed. Do not use the unit in rooms in which highly inflammable gases or dust can be formed. Fire hazard!
- When operating the heater, make sure the room does not contain inflammable materials, e. g. petrol, solvents, spray cans, paints etc. Also make sure that the unit is not operated in the vicinity of wood, paper, plastics etc. Keep such materials away from the heater.
- The air vents of the heater must be clean and free from foreign objects. Do not cover the unit to prevent overheating.
- The unit is designed for operation in altitudes of up to 2000 m above sea level.
- Should the unit become damaged do not use it. Do not disassemble the unit or try repairing it yourself. In case of questions or problems turn to our customer service.
- Batteries do not belong in the household garbage.
- For battery disposal please check with your local council.

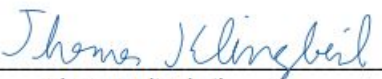
EC DECLARATION OF CONFORMITY

is according to the basic requirements, which are defined in the European Directives and their amendments.

| | |
|--------------------|------------------------------------------------------------------------------------------------------------------------------------------|
| 2011/65/EU | Beschränkung der Verwendung bestimmter gefährlicher Stoffe in Elektro- und Elektronikgeräten (RoHS) |
| 2011/65/EU | Restriction of the Use of certain hazardous Substances in electrical and electronic Equipment (RoHS) |
| 2014/30/EU | Elektromagnetische Verträglichkeit (EMV) |
| 2014/30/EU | Electromagnetic Compatibility (EMC) EN 55014-1:2017+A11, EN 55014-2:2015, EN IEC 61000-3-2:2019, EN 61000-3-3:2013+A1 |
| 2014/35/EU | Niederspannungsrichtlinie (LVD) |
| 2014/35/EU | Low Voltage Directive (LVD) EN 60335-1:2012+AC+A11+A13+A1+A14+A2+A15, EN 60335-2-30:2009+A11+AC+AC+A1+A12+A13+A2, EN 62233:2008+AC |
| 2009/125/EG | Energierellevante Produkte (ErP) |
| 2009/125/EC | Energy-related Products ErP Verordnungen/Regulations (EU) 2015/1188 |

Die technischen Unterlagen werden bei der QS der Westfalia Werkzeugcompany verwahrt.
The technical documentations are on file at the QA department of the Westfalia Werkzeug-company.

Hagen, den 21. Juni 2023
Hagen, 21st of June, 2023


Thomas Klingbeil,
Qualitätsbeauftragter / QA Representative

CUSTOMER SERVICES

- DEUTSCHLAND
- Westfalia Werkzeugstraße 1
- D-58093 Hagen
- Telefon: (0180) 5 30 31 32 Telefax: (0180) 5 30 31 30 Internet: www.westfalia.de

DISPOSAL

- Dear Customer,
- Please help avoid waste materials.
- If you at some point intend to dispose of this article, then please keep in mind that many of its components consist of valuable materials, which can be recycled.
- Please do not discharge it in the rubbish bin, but check with your local council for recycling facilities in your area.

Documents / Resources



[westfalia 960800 Socket heater With remote control](#) [pdf] Instruction Manual
960800 Socket heater With remote control, 960800, Socket heater With remote control, heater
With remote control, With remote control, remote control, control

References

- [W Westfalia Versand Österreich | Werkzeug ✓ Garten ✓ Technik ✓ & mehr](#)
- [W Westfalia Versand Schweiz | Werkzeug ✓ Garten ✓ Technik ✓ & mehr](#)
- [W Westfalia Versand Deutschland mobil bei Westfalia Versand Deutschland](#)