



Westfalia 812505 Multi Task Sharpener Instructions

[Home](#) » [Westfalia](#) » Westfalia 812505 Multi Task Sharpener Instructions

Westfalia 812505 Multi Task Sharpener Instructions



Contents [[hide](#)

[1 Intended Use](#)

[2 Before first Use](#)

[3 Changing the Adapters](#)

[4 Sharpening of Drills](#)

[5 Sharpening of Knives](#)

[6 Sharpening of Scissors](#)

[7 Sharpening of Plane and Chisel Blades](#)

[8 Maintenance, Cleaning and Storing](#)

[9 Technical Data](#)

[10 EC Declaration of Conformity](#)

[11 Disposal](#)

[12 Documents / Resources](#)

[12.1 References](#)

[13 Related Posts](#)

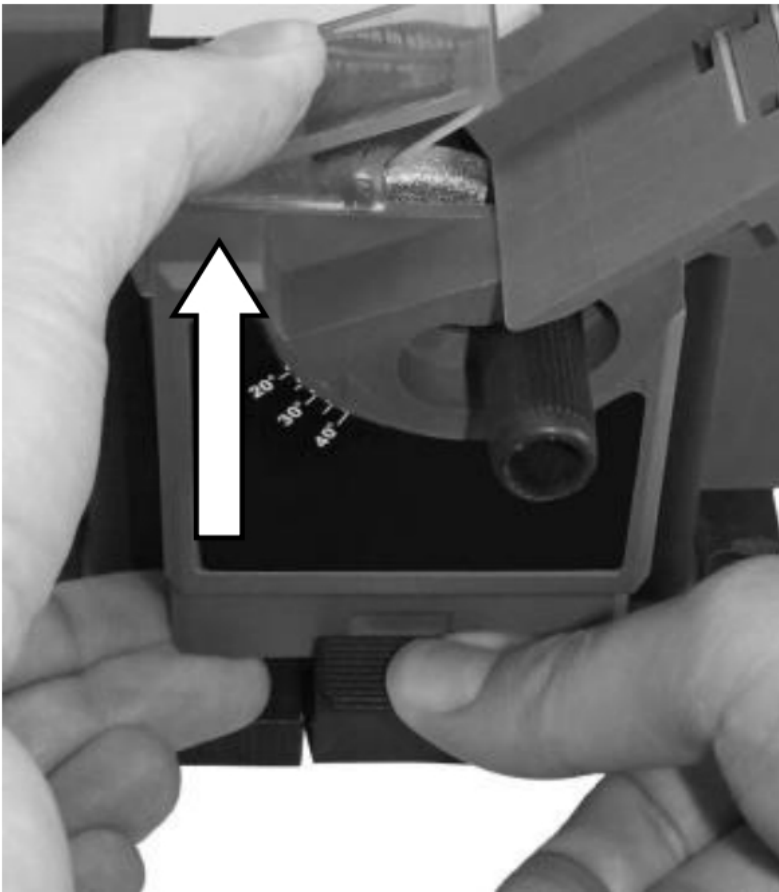
Intended Use

- The multi task sharpener is designed for dry grinding only and not for wet grinding. The multi task sharpener is designed for sharpening of HSS drill bits, knives and scissors with straight blades, plane blades and chisels.
- The device is a sharpener and it is not designed for work that would normally be done with a bench grinder.
- The intended use also includes an operation following the operating instructions.
- Any further use (different media, applying force) or unauthorised changes (reconstruction, no original accessories) can lead to danger and are meant to be not in accordance with regulations.

Before first Use

- Take the multi task sharpener out of the packaging. Keep packaging materials away from children. There is a risk of suffocation! Check the multi task sharpener for damage in transit. Do not use the device if it is damaged.
- If desired, the base plate (d) of the multi task sharpener can be attached permanently with 4 screws to the work bench.

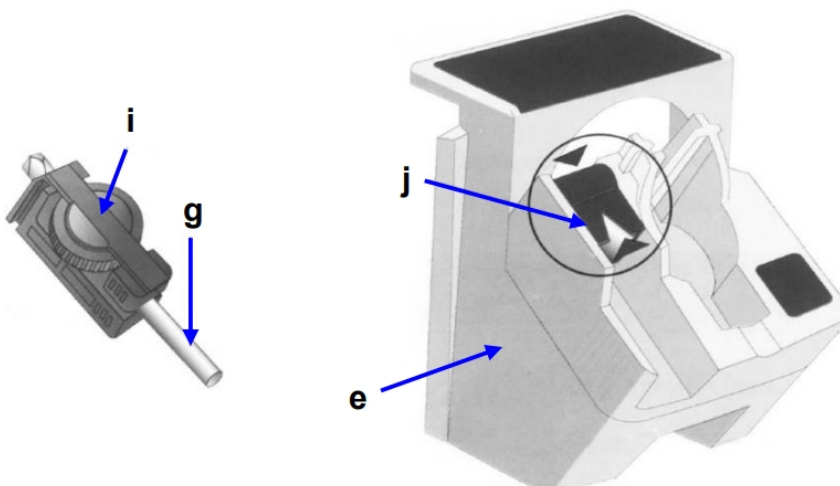
Changing the Adapters

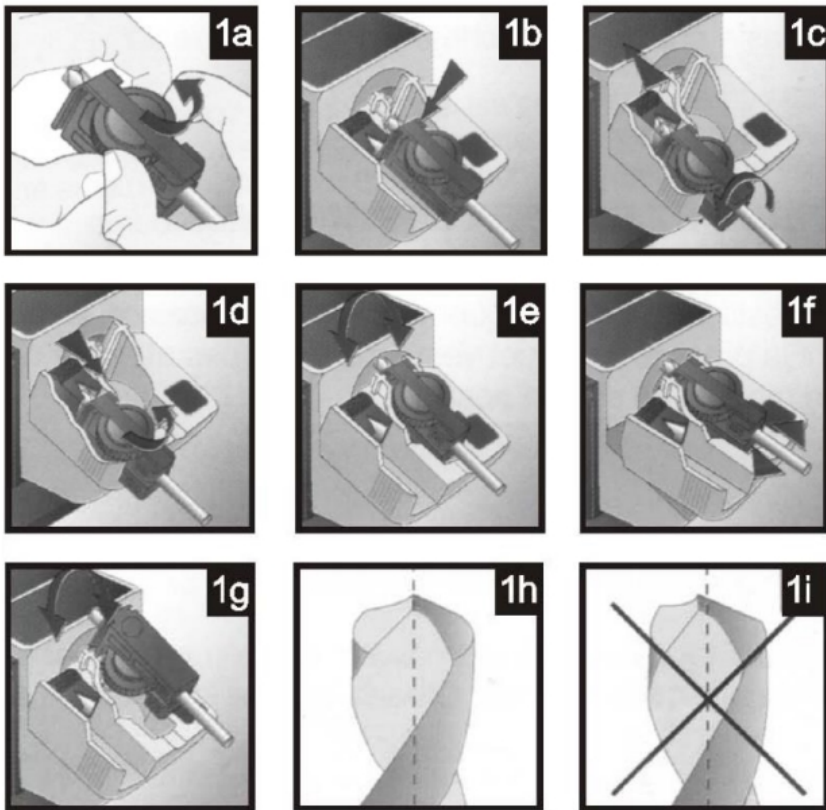


- Always install the appropriate sharpening / grinding adapter depending on the field of application. Depress the adapter releasing latch (f) and pull up the adapter from the multi task sharpener.
- Slide the desired adapter from above over the grinding disc (h) using the guide rails until the adapter releasing latch snaps into place. Do not use force when installing the adapter.
- Store the adapters that are not needed in the right or left bracket of the multi task sharpener.

Notes: Only remove the adapter from its position when the grinding disc has come to a complete standstill. The multi task sharpener can only be operated when the sharpening grinding adapter has been inserted properly

Sharpening of Drills





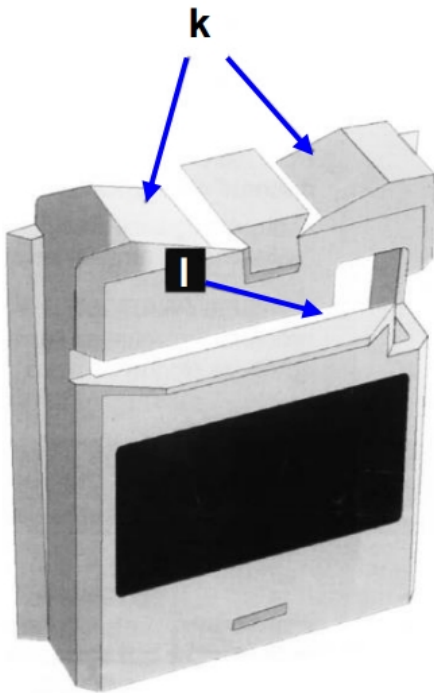
An appropriately sharpened drill is characterised by a spiky point in the middle of the drill tip, lip with two sharp and identically sized sides, two back edges that are slightly lower than the front edge of the lip.

If the drill does not look like as specified above, it has to be sharpened. Rough sharpening on a desk grinder followed by using the multi task sharpener is recommended for sharpening of skewed or very blunt drills.

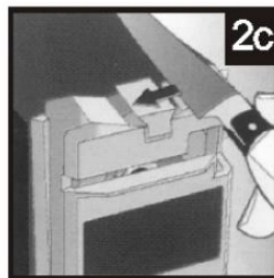
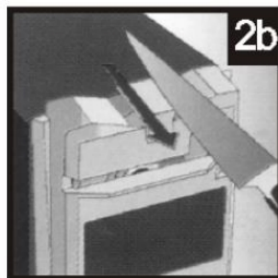
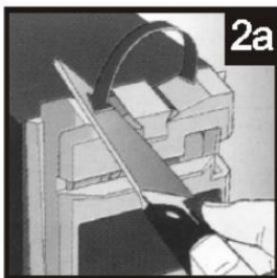
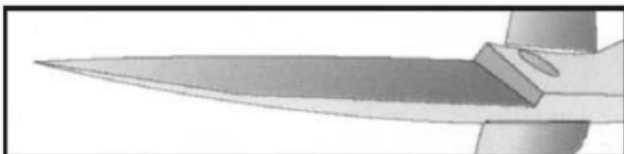
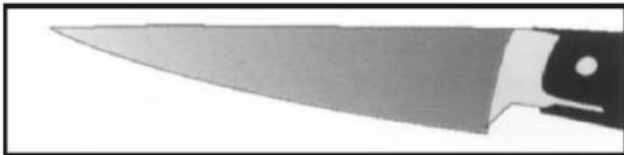
1. Install the adapter for sharpening drill bits (e) on the multi task sharpener.
2. Take the vice (i) off the holder on the adapter and insert the drill (g)
(figure 1a).
3. Tighten the vice slightly so that the drill in the vice can still be moved a bit.
4. Insert the vice into the notch at the bottom on the left side of the adapter so that the drill point faces to the v-guide (j) in the notch (figure 1b).
5. Move the drill to the very front of the v-guide **(figure 1c).**
6. Turn the drill so that it fits the sides of the v-guide.
7. Lift the v-guide and make sure the vice sits at the bottom of the notch.
8. Tighten the vice **(figure 1d).**
9. Lift the v-guide and remove the vice with the drill bit.
10. Put the vice into the vice holder that is located in the centre of the adapter **(figure 1e).**
11. Use the on/off switch (b) to put the multi task sharpener into operation.
12. Pan and move the vice holder several time slightly from one side to the other **(figure 1f).**
13. Remove the vice and turn it 180° so that the back is facing up **(figure 1g).**
14. Pan and move the vice holder several times slightly from one side to the other **(figure 1f).** Do not apply too much pressure as the drill could get overheated and damaged.
15. Make sure the drill is sharpened properly and corresponds to the three characteristics named above **(figure 1h).**

16. Switch off the multi task sharpener.

Sharpening of Knives



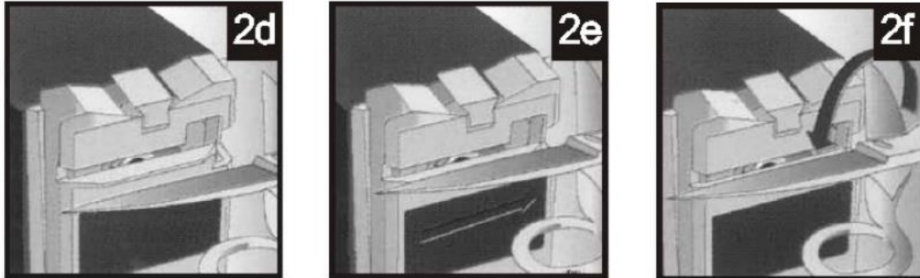
The adapter for sharpening knives and scissors is suitable for sharpening all household knives and scissors with straight blades. Serrated or wavy blades can not be processed.



1. Install the adapter for sharpening knives and scissors (c) on the multi task sharpener.
2. Use the on/off switch (b) to put the multi task sharpener into operation.
3. Hold the knife by its handle and put the end of the knife's cutting edge into the notch (k) of the adapter (**figure 2a**).
4. As soon as the cutting edge touches the grinding disc, start pulling the knife towards you until it is fully pulled out of the knife notch. Apply slight pressure against the grinding disc when pulling out the knife (**figure 2b**).
5. Turn the knife 180° and put it to the second knife notch (k) (figure 2c).

6. As soon as the cutting edge touches the grinding disc, start pulling the knife towards you until it is fully pulled out of the knife notch. Apply slight pressure against the grinding disc when pulling out the knife (figure 2b).
7. Check whether the knife is sharpened sufficiently and repeat the sharpening process if necessary.
8. Switch off the multi task sharpener

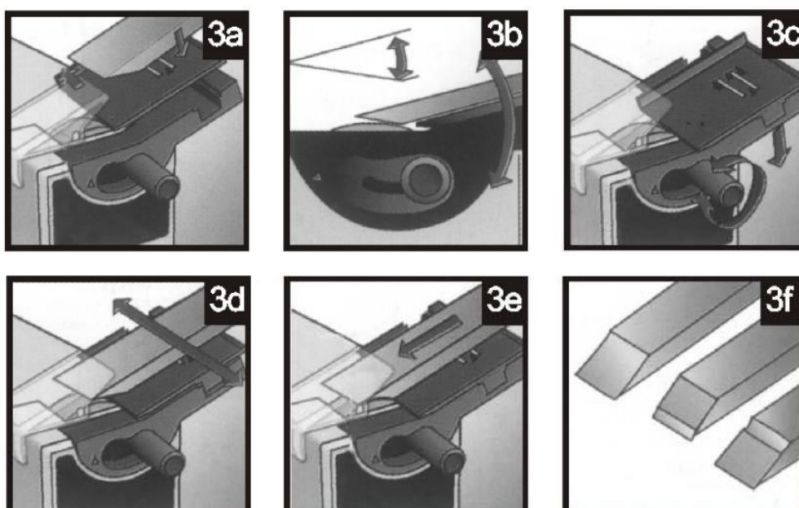
Sharpening of Scissors



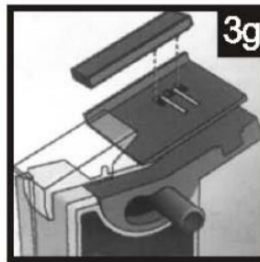
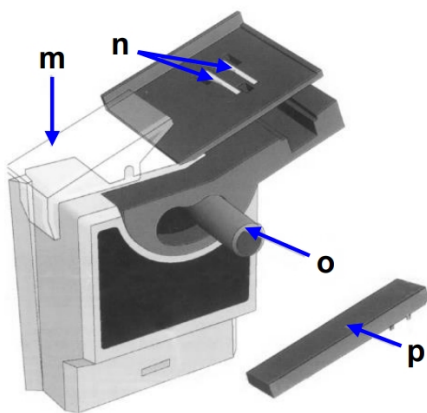
1. Install the adapter for sharpening knives and scissors (c) on the multi task sharpener.
2. Use the on/off switch (b) to put the multi task sharpener into operation.
3. Open the scissors to the full extent.
4. Insert the cutting edge of one scissor blade into the scissor notch (I) so that the scissors joint and handle of the other cutting edge are facing to the right (**figure 2d**).
5. As soon as the cutting edge touches the grinding disc, start pulling the scissors to the right applying slight pressure on the joint and on the blade. Do not apply too much pressure against the grinding disc (**figure 2e**).
6. Turn the scissors 180° and insert the cutting edge of the other scissor blade into the scissor notch (figure 2f).
7. As soon as the cutting edge touches the grinding disc, start pulling the scissors to the right applying slight pressure on the joint and on the blade. Do not apply too much pressure against the grinding disc (**figure 2e**).
8. Check whether the blades are sharpened sufficiently and repeat the sharpening process if necessary.
9. Switch off the multi task sharpener.

Note: Only knives and scissors with straight cutting edges can be sharpened. If you sharpen knives or scissors with serrated or special cutting edges, they will get damaged.

Sharpening of Plane and Chisel Blades



1. Install the adapter (a) for sharpening plane blades and chisels on the multi task sharpener.
 2. Put the blade or the chisel on the support blade (**figure 3a**). The magnet (n) keeps the material to be processed in its place.
 3. The angle between the material to be processed and the grinding disc must correspond to the original angle at the cutting edge of the material to be processed (**figure 3b**).
 4. The sharpening angle can steplessly be adjusted from 20° to 40°. To do so, untighten the angle adjusting handle (o) counter clockwise and tilt the support plate to an appropriate angle. Then tighten the angle adjusting handle again (**figure 3c**).
- Important:** Do not set up an angle wider than 40° in order not to damage the transparent finger guard (m).
5. The cutting edge of the material to be processed may touch the surface of the grinding disc only slightly.
 6. Use the on/off switch (b) to put the multi task sharpener into operation.
 7. Press the material to be processed slightly against the grinding disc and move the support plate and the material to be processed evenly back and forth all the time, otherwise the cutting edge would be sharpened unevenly (**figure 3d**).
 8. When sharpening, move the material to be processed along the support plate further downwards and continue moving it from side to side (**figure 3e**).
 9. Switch off the multi task sharpener.
 10. Check whether the cutting edge angle is sharpened properly (**figure 3f**). Check whether the material to be processed is sharpened sufficiently and repeat the sharpening process if necessary.
 11. Use the provided distance piece (p) to sharpen thin chisels (**figure 3g**).
 12. After sharpening, grind the cutting edge using an oil stone or the like.



Important Notes

- The work piece may become very hot during sharpening / grinding. This may lead to a change in the material properties of the work piece. Therefore, allow the work piece to cool down during machining.
- Do not operate the multi task sharpener longer than 15 minutes. Then allow it to cool down for at least 30 minutes.
- If the sharpening results are poor, check the grinding disc for wear and replace it if necessary.

Replacement Grinding Disc

You can order replacement grinding discs from Westfalia:
Art. No. 81 26 12

Maintenance, Cleaning and Storing

- Before each use, check the condition of the multi task sharpener and the condition of the power cord. Also check for other general damages.
- Immediately turn off the machine, if an unusual sound is noticed or unusual vibrations occur. If the machine shows any kind of damage, do not continue to use it, but have it repaired by a professional or turn to our customer support department.
- Keep the machine and the ventilation slots clean, dry and free from grease and oil.
- Use only mild detergent and a moist cloth to clean the tool.
- Store the multi task sharpener indoors in a place that is protected from dust, dirt, humidity and extreme temperatures.
- Store the tool out of reach of children.

Technical Data

- **Rated Voltage:** 230 V~, 50 Hz
- **Drill Bit Diameter:** Ø 3 – 10 mm
- **Blade Width:** 6 – 51 mm
- **No Load Speed:** 7350 min⁻¹
- **Rated Power:** 65 W
- **Protection class:** II
- **Duty Cycle:** S2 15 min
- **Sound Pressure Level:** L_{pA} = 74 dB(A)
- **Sound Power Level:** L_{WA} = 83 dB(A)
- **Grinding Disc Size:** Ø 48 mm
- **Weight:** Approx. 1.6 kg
- **Base Plate Size:** 14 x 15 cm

* Sound emissions may differ from the declared values during use depending on the ways in which the tool is used.

EC Declaration of Conformity

We, the Westfalia Werkzeugcompany, Werkzeugstraße 1, D-58093 Hagen,

Universal-Schärfstation

Multi Task Sharpener

Artikel № 81 25 05

Article No. 81 25 05

is according to the basic requirements, which are defined in the European Directives and their amendments.

2011/65/EU

Restriction of the Use of certain hazardous Substances in electrical and electronic Equipment (RoHS)

2004/108/EC

Electromagnetic Compatibility (EMC)

EN 55014-1:2017+A11, EN 55014-2:1997+AC+A1+A2,

EN 61000-3-2:2014, EN 61000-3-3:2013

2006/42/EC

Machinery

EN 62841-1:2015+AC, EN 62841-3-4:2016+A11+A12+A1,
EN ISO 12100:2010

The technical documentations are on file at the QA department of the Westfalia Werkzeug company.

Hagen, 1st of June, 2021



Thomas Klingbeil, QA Representative

Deutschland

Westfalia

Werkzeugstraße 1

D-58093 Hagen

Telefon: (0180) 5 30 31 32

Telefax: (0180) 5 30 31 30

Internet: www.westfalia.de

Österreich

Westfalia

Moosham 31

A-4943 Geinberg OÖ

Telefon: (07723) 4 27 59 54

Telefax: (07723) 4 27 59 23

Internet: www.westfalia-versand.at

Schweiz

Westfalia

Wydenhof 3a

CH-3422 Kirchberg (BE)

Telefon: (034) 4 13 80 00

Telefax: (034) 4 13 80 01

Internet: www.westfalia-versand.ch

Disposal



Dear Customer,

Please help avoid waste materials.

If you at some point intend to dispose of this article, then please keep in mind that many of its components consist of valuable materials, which can be recycled.

Please do not discharge it in the rubbish bin, but check with your local council for recycling facilities in your area.





[Westfalia 812505 Multi Task Sharpener](#) [pdf] Instructions

812505 Multi Task Sharpener, 812505, Multi Task Sharpener, Task Sharpener, Multi Sharpener, Sharpener

References

- [W Westfalia Versand Österreich | Werkzeug ✓ Garten ✓ Technik ✓ & mehr](#)
- [W Westfalia Versand Schweiz mobil bei Westfalia Versand Schweiz](#)
- [W Westfalia Versand Deutschland mobil bei Westfalia Versand Deutschland](#)