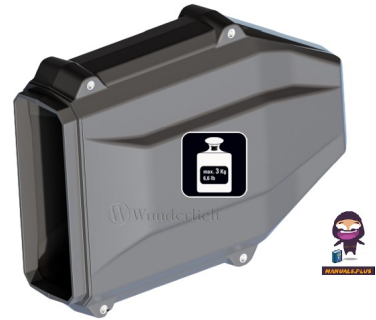



**WERKZEUGBOX**  
7381SA2 Toolbox



## Werkzeugbox 7381SA2 Toolbox Installation Guide

[Home](#) » [Werkzeugbox](#) » Werkzeugbox 7381SA2 Toolbox Installation Guide 

### Contents

- [1 Werkzeugbox 7381SA2 Toolbox](#)
- [2 Specifications](#)
- [3 Product Information](#)
- [4 Toolbox](#)
- [5 KEY](#)
- [6 Assembly Steps](#)
- [7 Maintenance Tips](#)
- [8 FAQs](#)
- [9 Documents / Resources](#)
  - [9.1 References](#)

# WERKZEUGBOX

Werkzeugbox 7381SA2 Toolbox



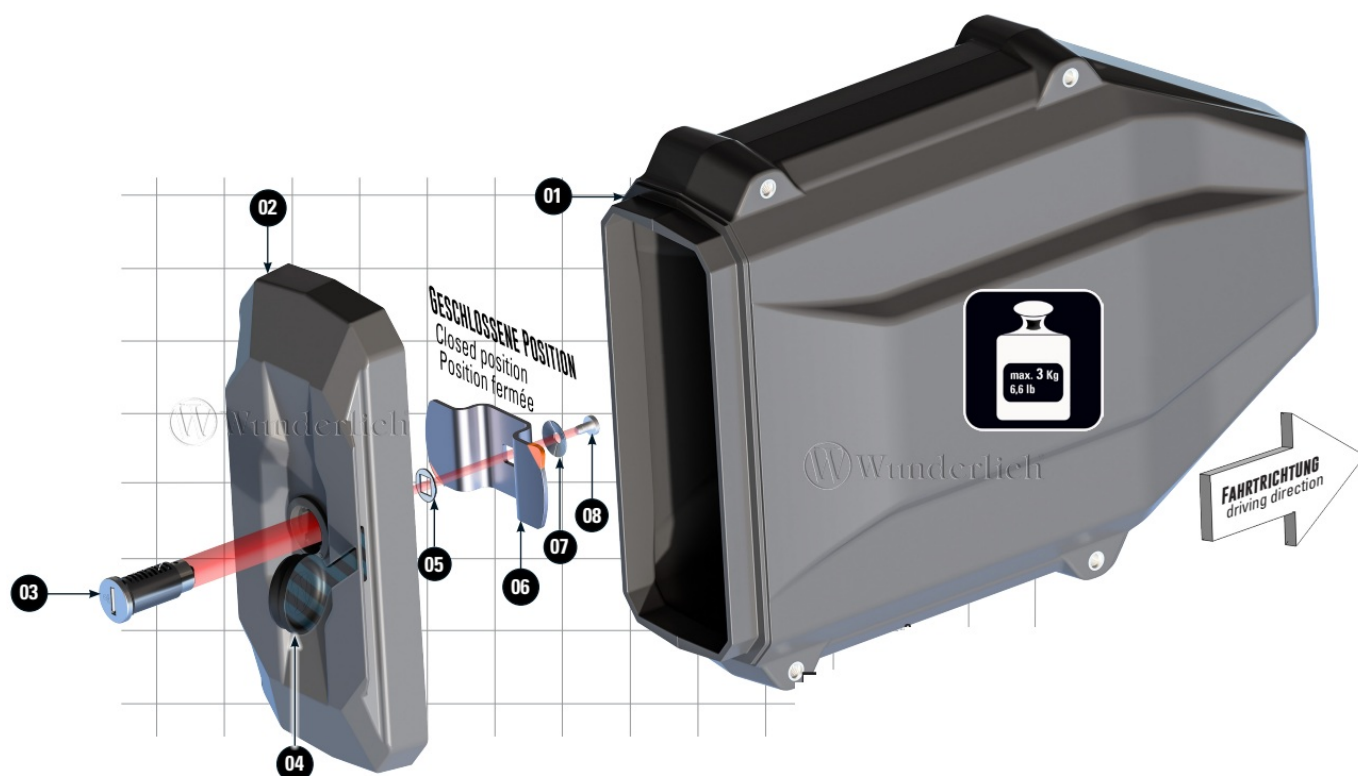
## Specifications

- Product Name: Werkzeugbox
- Model Number: 41601-000

## Product Information

This Werkzeugbox includes a toolbox, cover, protective cap, thread locking fluid, clamping washer, and various screws for assembly.

## Toolbox



	BEZEICHNUNG / DESCRIPTION	DIN	ISO	MENGE QUANTITY
1	Werkzeugbox / Toolbox			1
2	Deckel / Cover			1
3	Schloß / Lock			1
4	Schutzkappe / Protective cap			1
5	Passscheibe / Shim <b>D</b> Ø 13,5 - <b>h</b> 0,5 mm			1
6	Schließblech / Locking plate			1
7	Spannscheibe / Clamping washer			1
8	Linsenflanschschraube / Lens head screw M4x6 Torx <b>Ersatzschraube / spare screw</b>	7381SA2	7381SA2	1

The colors are for illustrating purposes only.

## KEY



*Fitting tip*



*Screw*



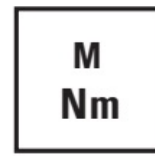
*Attention*



*Thread locking fluid*



*Magnification*



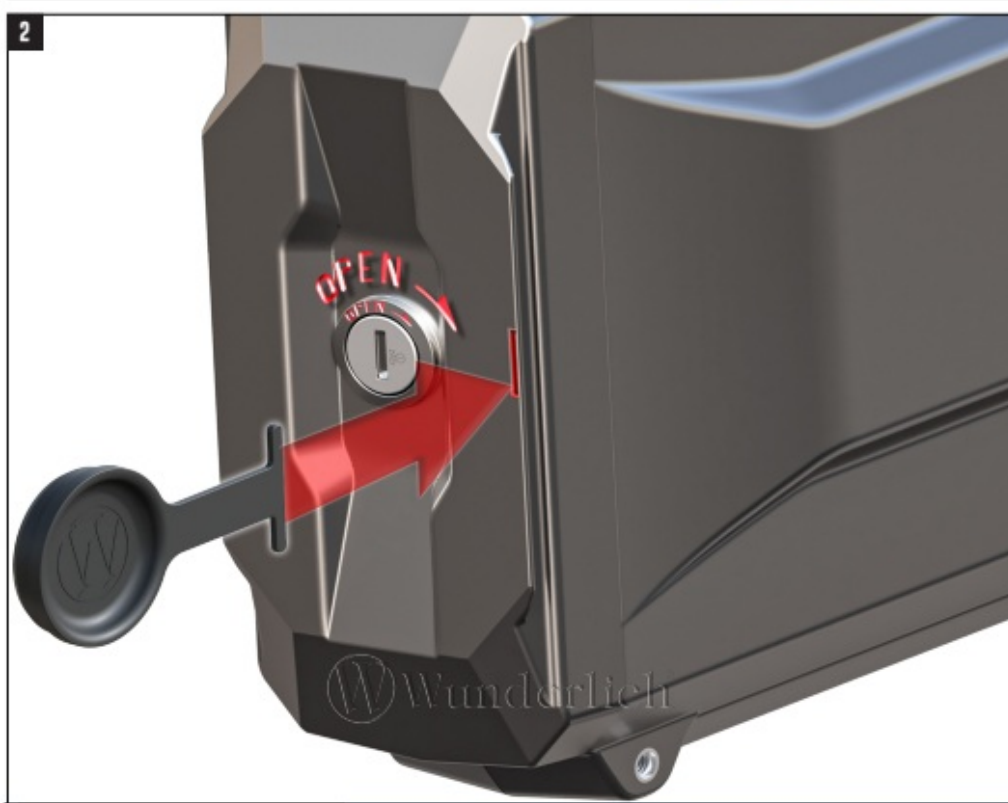
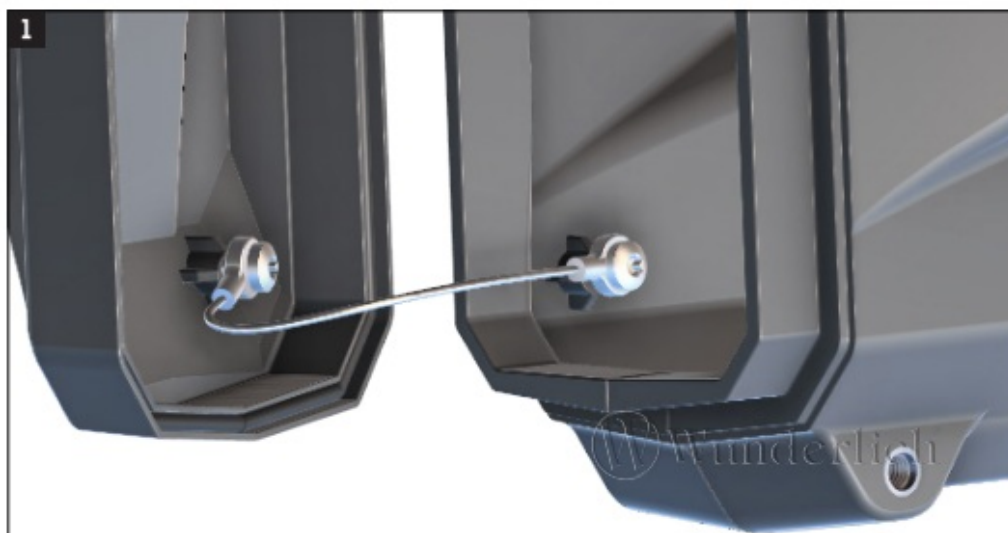
*Torque*

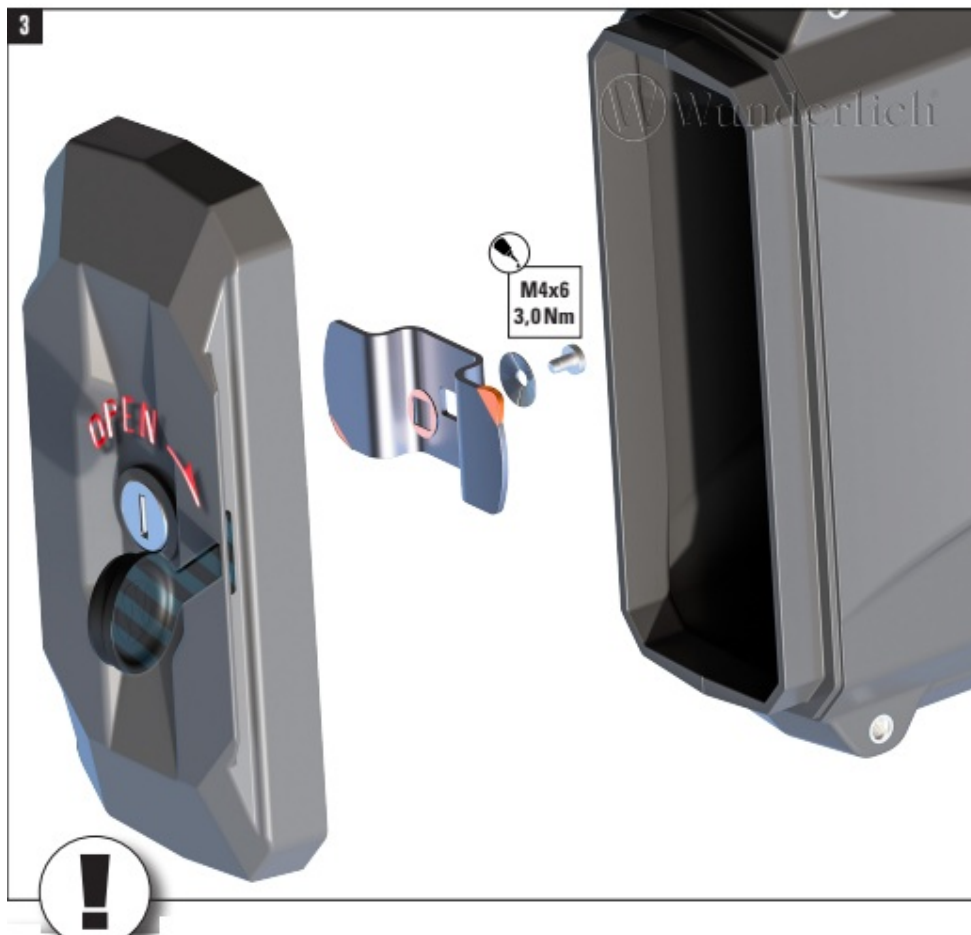


*Fitting lubricant*

With the box locked, the seal will have adjusted itself optimally after 1-2 days. The shim is used for fine adjustment, removing it increases the tension of the striker plate.

### **Assembly Steps**





1. Place the toolbox on a flat surface.
2. Attach the cover securely to the toolbox using the provided screws.
3. Install the protective cap at the designated location.
4. Apply the thread-locking fluid as needed during assembly.
5. Use the clamping washer for additional support.

## Maintenance Tips

- For optimal sealing, lock the box for 1-2 days to allow the seal to adjust.
- Use the shim for fine adjustments; removing it increases tension on the striker plate.

## FAQs

**Q: How long does it take for the seal to adjust optimally?**

**A:** The seal will adjust optimally after 1-2 days when the box is locked.

**Q: What is the purpose of the shim provided with the toolbox?**

**A:** The shim is used for fine adjustment; removing it increases tension on the striker plate.

Wunderlich GmbH | Joseph-von-Fraunhofer-Str. 6-8 | DE-53501  
Grafschaft-Ringen [www.wunderlich.de](http://www.wunderlich.de) | Tel.: +492641 3082-0

## Documents / Resources



[Werkzeugbox 7381SA2 Toolbox](#) [pdf] Installation Guide  
41601-000, 7381SA2, 7381SA2 Toolbox, 7381SA2, Toolbox

## References

- [Wunderlich - Die № 1 für BMW Motorrad Zubehör](#)
- [User Manual](#)

[Manuals+](#), [Privacy Policy](#)

This website is an independent publication and is neither affiliated with nor endorsed by any of the trademark owners. The "Bluetooth®" word mark and logos are registered trademarks owned by Bluetooth SIG, Inc. The "Wi-Fi®" word mark and logos are registered trademarks owned by the Wi-Fi Alliance. Any use of these marks on this website does not imply any affiliation with or endorsement.