



**Contents** [ [hide](#) ]

- [1 WENJIE J06 Bluetooth Remote Control](#)
- [2 OVERVIEW](#)
- [3 For iPhone and iPad](#)
- [4 How to use](#)
- [5 Product Usage Instructions](#)
- [6 FCC](#)
- [7 Specifications](#)
- [8 FAQs](#)
- [9 Documents / Resources](#)
  - [9.1 References](#)

# WENJIE

## WENJIE J06 Bluetooth Remote Control



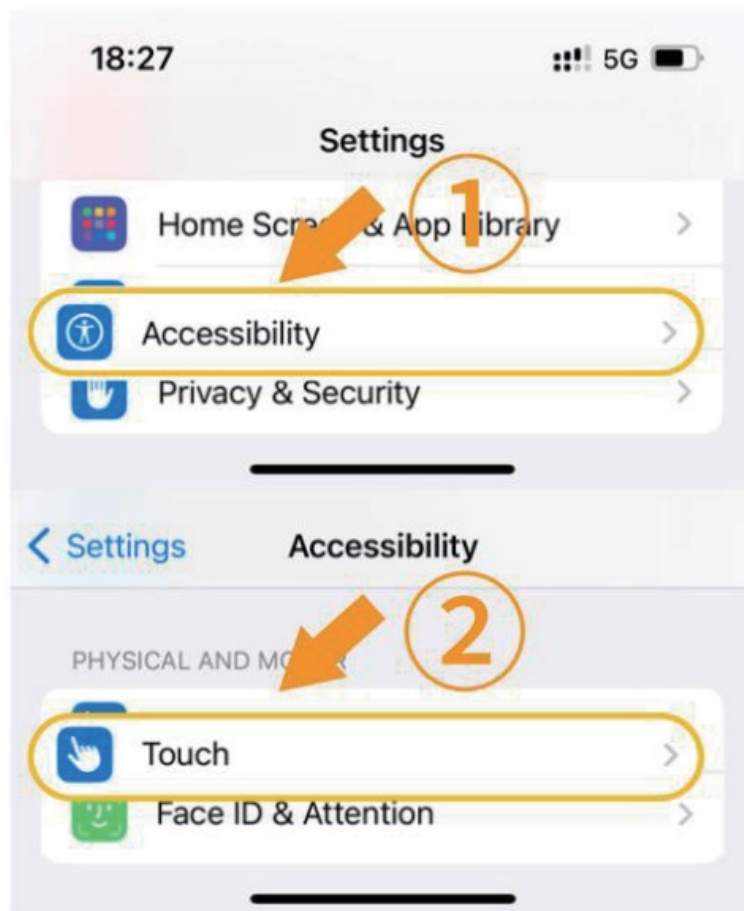
## OVERVIEW

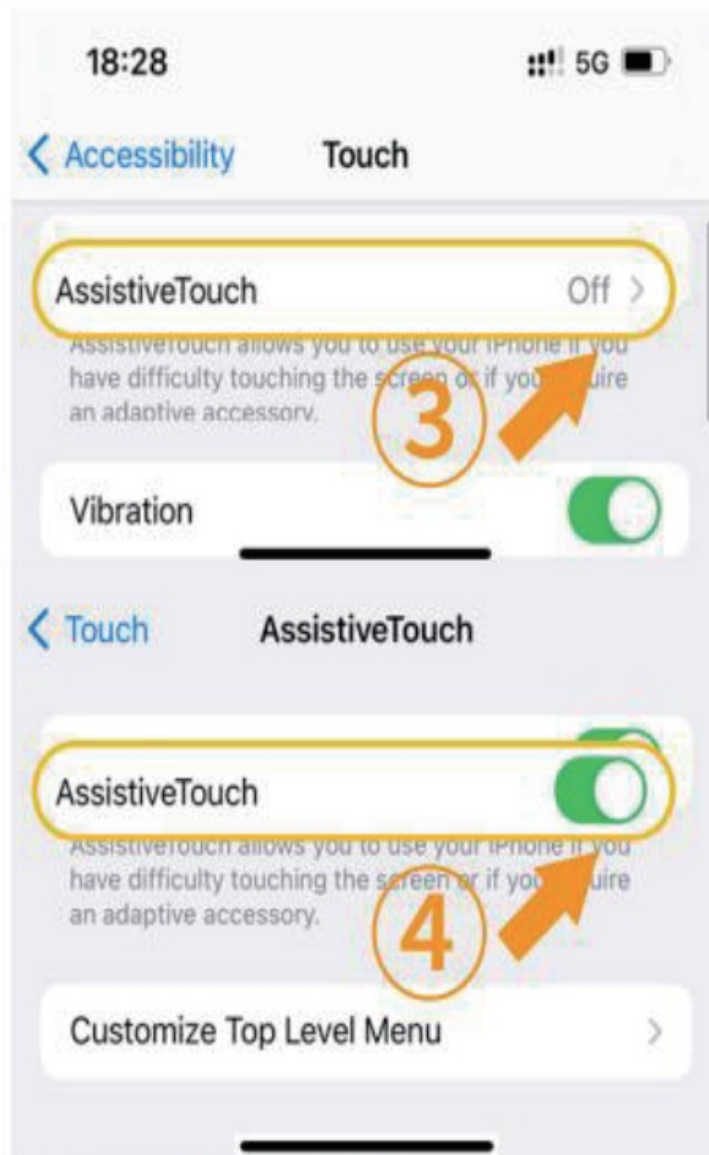


1. **Tap:** Last Page/Long Press: Volumn +
2. **Tap:** Left Page/Long Press: Last Track
3. **Tap** for camera shutter/Long press for On/Off
4. **Tap:** Right Page/Long Press: Next Track
5. **Tap:** Next Page/Long Press: Volumn-
6. **Shooting and filming** in video app, can be customized

**For iPhone and iPad**

System version have to be 14.8 or above, and please open Assistive Touch before connect.





Until the following illustration appears



## How to use

1. **Long press Button I** for 3 seconds to turn on/off. The blue indicator light will automatically flash.
2. **Search Bluetooth** "J06" to pair, and the indicator light stops flashing after pair succeed.
3. **Direction Keys:** flip videos on TikTok up and down, left and right. Long press the up and down keys to adjust volume and long press the left and right keys to switch songs.
4. **Play Button:** click to pause/play when viewing TikTok video (double-click to like) or other video apps, long press to play/pause Music, shot pictures and video
5. **Button I:** Supports various camera apps such as phone camera/beauty camera, etc.
6. **Button II:** Supports all apps for video shooting such as TikTok/customize button.
7. If you want to shooting pictures and videos in Tiktok or other video APPs, please enter the shooting interface of the APP, press Button II and hold, and click the direction key to move the "dot" into shutter circle range.

**NOTE:** Restart the device and reconnect if the device doesn't work.

## Product Usage Instructions

- **Power On/Off**

- To power on the device, press and hold the power button for 3 seconds. To power off, repeat the same process.

- **Connectivity**

- Ensure the device is within range of the desired connection. Activate Bluetooth/Wi-Fi and follow the on-screen instructions to pair/connect with other devices.

- **Settings Adjustment**

- Access the settings menu by navigating to the corresponding section on the device's interface. Make necessary adjustments as per your preferences.

- **Maintenance**

- Regularly clean the device using a soft, dry cloth. Avoid using harsh chemicals or solvents that may damage the device's surface.

## FCC

### FCC Statement

**Note:** This equipment has been tested and found to comply with the limits for a Class B digital device, pursuant to part 15 of the FCC Rules. These limits are designed to provide reasonable protection against harmful interference in a residential installation. This equipment generates, uses and can radiate radio frequency energy and, if not installed and used in accordance with the instructions, may cause harmful interference to radio communications. However, there is no guarantee that interference will not occur in a particular installation. If this equipment does cause harmful interference to radio or television reception, which can be determined by turning the equipment off and on, the user is encouraged to try to correct the interference by one or more of the following measures:

- Reorient or relocate the receiving antenna.
- Increase the separation between the equipment and receiver.

- Connect the equipment into an outlet on a circuit different from that to which the receiver is connected.
- Consult the dealer or an experienced radio/TV technician for help.

This device complies with part 15 of the FCC Rules.

**Operation is subject to the following two conditions:**

1. This device may not cause harmful interference, and
2. this device must accept any interference received, including interference that may cause undesired operation.

Any changes or modifications not expressly approved by the party responsible for compliance could void the user's authority to operate the equipment. The device has evaluated to meet general RF exposure requirement. The device can be used in portable exposure without restriction.

## **Specifications**

- **Compliance:** Part 15 of FCC Rules
- **RF Exposure:** General requirements met
- **Usage:** Portable exposure without restriction

## **FAQs**

- **Q: Can this device be used outdoors?**
  - **A:** Yes, the device can be used outdoors as it meets general RF exposure requirements.
- **Q: How do I reset the device?**
  - **A:** To reset the device, locate the reset button (usually found near the charging port) and press it with a paperclip or similar tool.

## **Documents / Resources**



## [WENJIE J06 Bluetooth Remote Control \[pdf\]](#) User Guide

J06, J06 Bluetooth Remote Control, Bluetooth Remote Control, Remote Control

## References

- [User Manual](#)

Bluetooth Remote Control, J06, J06 Bluetooth Remote Control, Remote Control,

WENJIE WENJIE

---

## Leave a comment

Your email address will not be published. Required fields are marked \*

Comment \*

Name

Email

Website

☐ Save my name, email, and website in this browser for the next time I comment.

**Post Comment**



## Search:

e.g. whirlpool wrf535swhz

Search

[Manuals+](#) | [Upload](#) | [Deep Search](#) | [Privacy Policy](#) | [@manuals.plus](#) | [YouTube](#)

This website is an independent publication and is neither affiliated with nor endorsed by any of the trademark owners. The "Bluetooth®" word mark and logos are registered trademarks owned by Bluetooth SIG, Inc. The "Wi-Fi®" word mark and logos are registered trademarks owned by the Wi-Fi Alliance. Any use of these marks on this website does not imply any affiliation with or endorsement.