



Wemo WLS0503 Smart Light Switch with Thread Instruction Manual

[Home](#) » [WeMo](#) » Wemo WLS0503 Smart Light Switch with Thread Instruction Manual 

Contents

- [1 Wemo WLS0503 Smart Light Switch with Thread](#)
- [2 How to install Wemo Smart Light](#)
- [3 INSTALLATION INSTRUCTION](#)
- [4 Documents / Resources](#)
 - [4.1 References](#)
- [5 Related Posts](#)



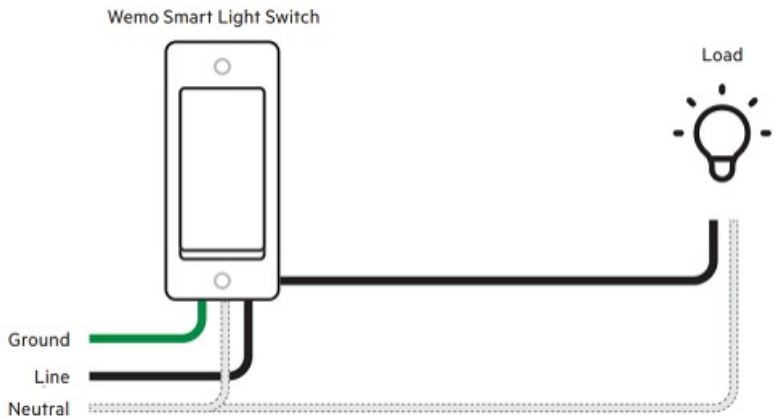
Wemo WLS0503 Smart Light Switch with Thread



How to install Wemo Smart Light

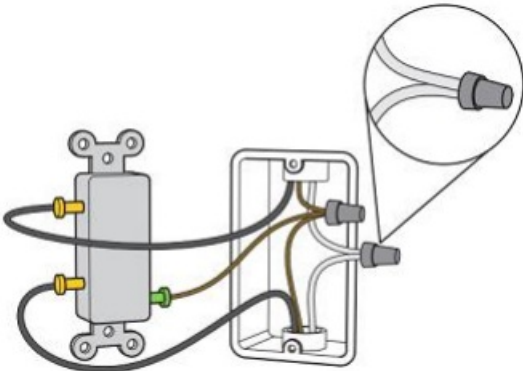


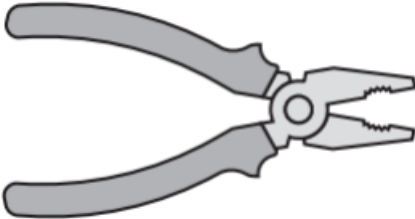

Switch 3-Way, WLS0503 to replace a single-pole switch

This article will show you how to properly install the Wemo Smart Light Switch 3-Way, WLS0503 to replace a single-pole switch.



- **NOTE:** Click [here](#) for instructions on replacing a 3-way switch with a Wemo WLS0503.

Before you begin, make sure to have the following:

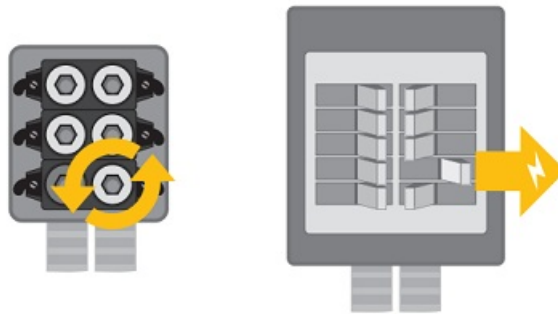
Tool	Image	Description
Neutral wire		Usually white in color, neutral wires are required to install the Wemo WLS0503.
Phillips screwdriver		These are used to screw or unscrew parts of the switch in place.
Flat-head screwdriver		
Pliers / wire strippers		This is used to bend or remove portions of the wire.
Voltage tester		This is used to check for any power in the neutral wires.

- **QUICK TIP:** The pliers/wire strippers and voltage tester are not required, but highly recommended.

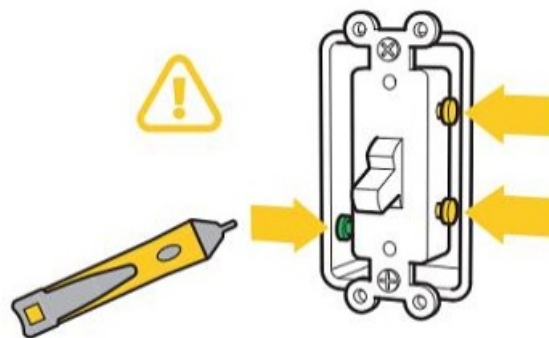
- **WARNING:** While the Wemo WLS0503 can be installed easily by anyone, we recommend contacting a licensed electrician if you do not feel comfortable installing it yourself.
- **WARNING!** Risk of electric shock
- Incorrect installation could be dangerous or illegal.
- You might need to turn off multiple breakers/fuses for safe installation.
- Please call a professional electrician if you are unfamiliar or uncomfortable with electrical work

INSTALLATION INSTRUCTION

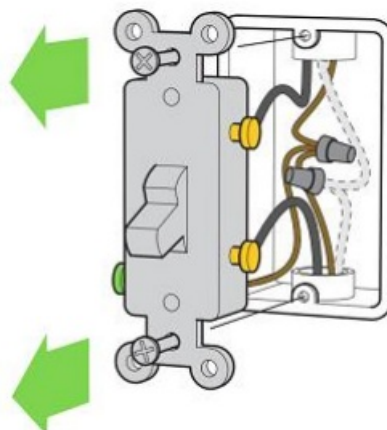
- **Step 1:** Turn OFF the power of the switch you're replacing at your fuse panel or circuit breaker.



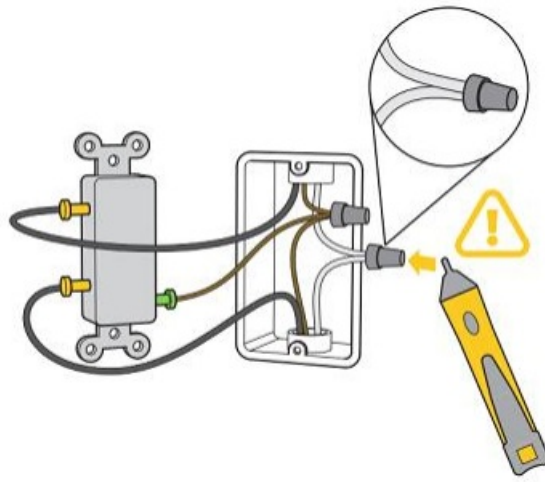
- **NOTE:** To confirm that the power is OFF, remove the cover plate from the existing switch and use a voltage tester to test BOTH sides of the switch. You may need to turn OFF more than one circuit breaker/fuse.



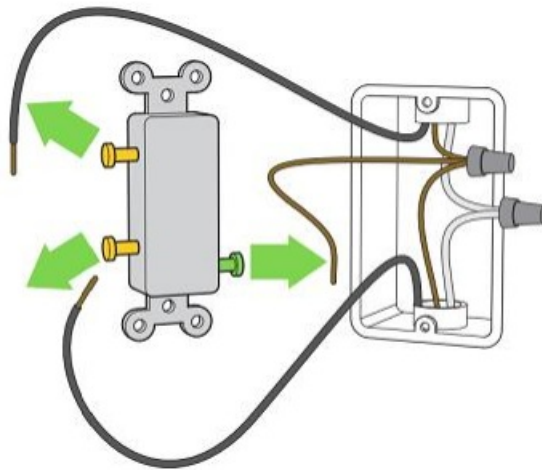
- **Step 2:** Unscrew the switch and gently pull it out of the wall. Do not remove any of the wires yet.



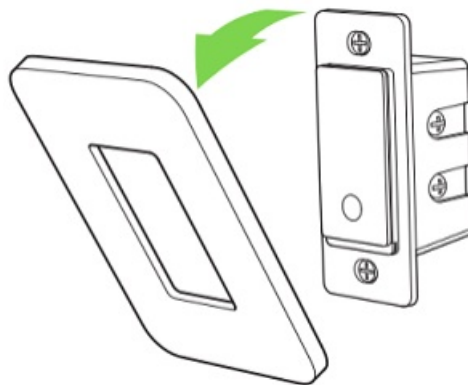
- **QUICK TIP:** Take a picture of the wires in your wall to refer back to later.
- **Step 3:** Look for neutral wires then use a voltage tester to check that there is no power in the neutral wires from neighboring circuits. If necessary, turn OFF additional circuits until no voltage is found. You may have a different number of neutral wires compared to what is shown below.



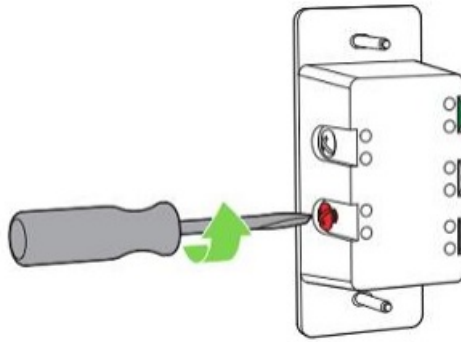
- **NOTE:** If you have a 4-way switch, you cannot proceed with the installation as the Wemo WLS0503 cannot replace a 4-way switch.
- **Step 4:** Disconnect the line and load wires (usually black) from the existing light switch, disconnect the ground wire from the switch (usually bare copper or green), and then remove the wire nuts from the white neutral wires.



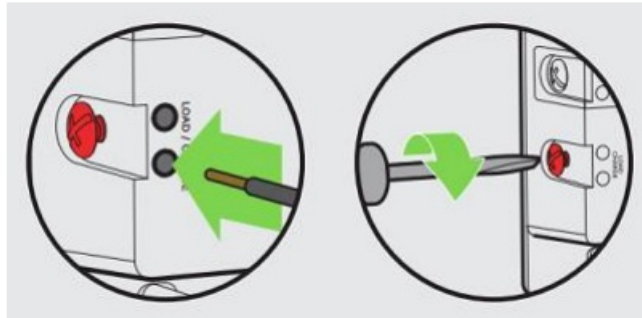
- **NOTE:** Your existing switch, wires, and electrical box may look different and have different colors.
- **Step 5:** Grab the cover plate from the top and pull it down to snap it off of the Wemo WLS0503.



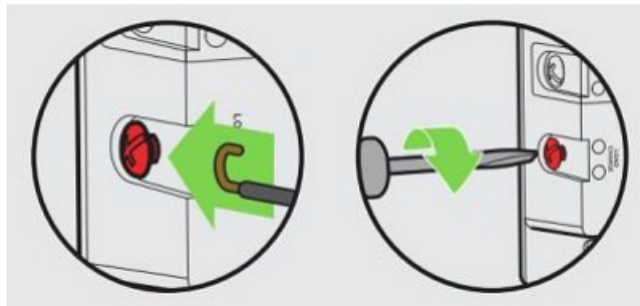
- **Step 6:** Loosen the black and red screws on the Wemo WLS0503 with a screwdriver.



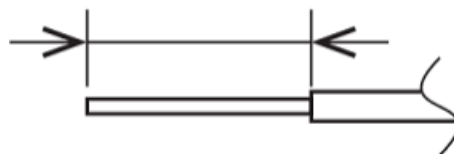
- **Step 7:** Choose your preferred method for connecting wires.
- **Method 1:** Insert the wire end into either of the holes near the screw and then use a screwdriver to tightly screw the terminal screws back in. These will clamp down on the wire.



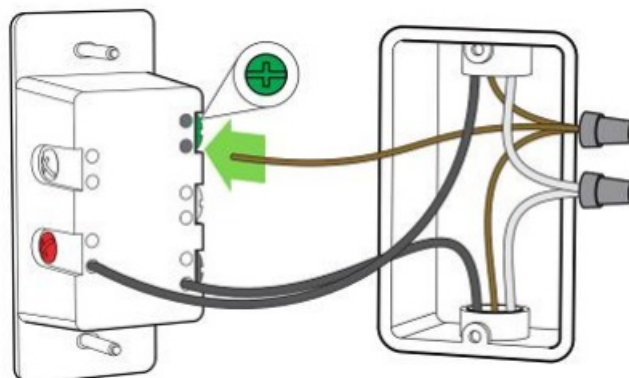
- **Method 2:** Use pliers to bend the end of the wire clockwise, and then hook it around the screw. Use a screwdriver to tightly screw the terminal screws back in.



- **QUICK TIP:** If needed, use pliers to strip the wire end's length to about 23 mm.

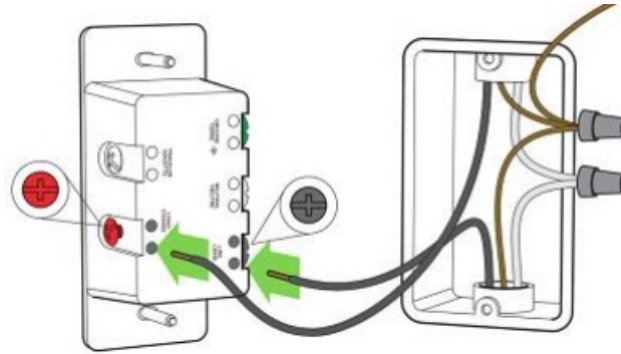


- **Step 8:** If present, it is recommended to first connect the ground wires (usually copper or green) from the wall to the green screw on the switch.

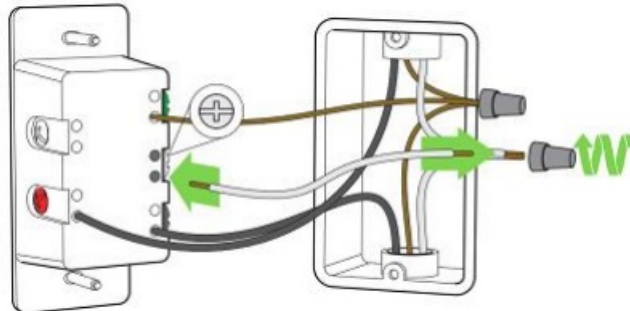


- Alternatively, proceed to connect the line and load wires (usually black) to the black and red screws on the light using your preferred method (the image above shows Method 1) if your home does not have a ground wire.

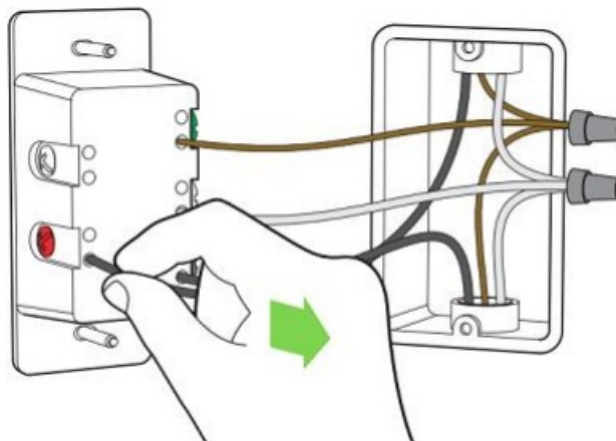
- **Step 9:** Tighten each screw after inserting each wire. Either wire can be connected to either screw.



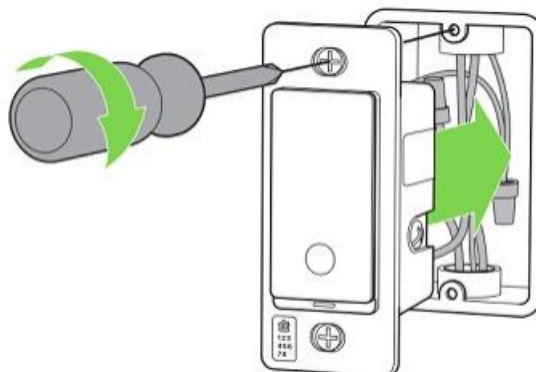
- **Step 10:** Connect the provided jumper wire from the silver screw on the light switch to the neutral wires in the wall with a wire nut.



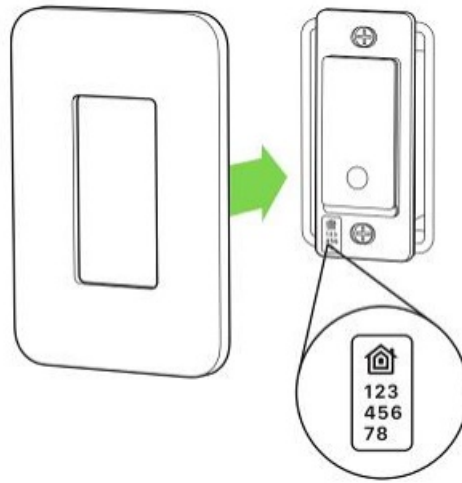
- **Step 11:** Tug each wire to ensure they are securely connected.



- **Step 12:** Carefully tuck the wires behind the switch and into the box. Screw the light switch into the wall while being careful not to tighten the screws too much.

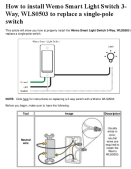


- **IMPORTANT:** Make sure to insulate any exposed wiring with electrical tape.
- **Step 13:** Take note of the eight-digit setup code on the switch. You may need this during the Home app setup.
- Once you've done that, snap the cover plate onto the switch.



- **Step 14:** Turn ON the power to your switch at your fuse panel or circuit breaker panel (the same one you turned OFF earlier).

Documents / Resources

	<p>Wemo WLS0503 Smart Light Switch with Thread [pdf] Instruction Manual WLS0503 Smart Light Switch with Thread, WLS0503, Smart Light Switch with Thread, Light Switch with Thread, Switch with Thread, Thread</p>
---	---

References

- [Belkin Official Support - How to install Wemo Smart Light Switch 3-Way, WLS0503 to replace an existing 3-way switch](#)
- [Belkin Official Support - How to install Wemo Smart Light Switch 3-Way, WLS0503 to replace a single-pole switch](#)
- [Belkin Official Support - How to install Wemo Smart Light Switch 3-Way, WLS0503 to replace a single-pole switch](#)
- [Belkin Official Support - Adding the Wemo Smart Light Switch 3-Way, WLS0503 to the Home app](#)
- [User Manual](#)