

WELLS SS4 Drop In Round Well Warmers with Infinite Switch Control



WELLS SS4 Drop In Round Well Warmers with Infinite Switch Control Owner's Manual

[Home](#) » [WELLS](#) » WELLS SS4 Drop In Round Well Warmers with Infinite Switch Control Owner's Manual 

Contents

- 1 WELLS SS4 Drop In Round Well Warmers with Infinite Switch Control
- 2 Product Information
- 3 Product Usage Instructions
- 4 LIMITED WARRANTY STATEMENT
- 5 INTRODUCTION
- 6 SPECIFICATIONS
- 7 FEATURES & OPERATING CONTROLS
- 8 PRECAUTIONS AND GENERAL INFORMATION
- 9 INSTALLATION
- 10 OPERATION
- 11 MAINTENANCE INSTRUCTIONS
- 12 CLEANING INSTRUCTIONS
- 13 TROUBLESHOOTING SUGGESTIONS
- 14 WIRING DIAGRAM
- 15 EXPLODED VIEW & PARTS LIST
- 16 PARTS & SERVICE
- 17 Documents / Resources
 - 17.1 References
- 18 Related Posts



WELLS SS4 Drop In Round Well Warmers with Infinite Switch Control



SS-10

Product Information

Specifications:

- Manufacturer: Wells Manufacturing
- Model Numbers: SS4, SS4D, SS8, SS8D, SS10, SS10D
- Control: Infinite Switch
- Warranty: 1 year from date of installation or 18 months from shipment
- Contact: 10 Sunnen Dr., St. Louis, MO 63143, USA | Phone: [314-678-6314](tel:314-678-6314) | Fax: [314-781-2714](tel:314-781-2714)

Product Usage Instructions

Installation:

1. Refer to the included INSTALLATION manual for detailed instructions.
2. Ensure the warmer is placed on a flat, stable surface.
3. Connect the appropriate electrical connections according to the wiring diagram provided.
4. Verify the voltage and phase settings match the equipment specifications.

Use & Care:

1. Read and understand the OWNER'S MANUAL thoroughly before operating the warmer.
2. Turn the warmer on using the infinite switch control.
3. Place food items in the round-well to keep them warm.
4. Regularly clean the warmer according to the maintenance instructions provided.

Parts List & Wiring Diagram:

1. Refer to the EXPLODED VIEW PARTS LIST for component identification.
2. Consult the WIRING DIAGRAM for any troubleshooting or electrical connections.

FAQ (Frequently Asked Questions):

- **Q: What is covered under the warranty?**

A: The warranty covers defects in materials and workmanship for a specified period from installation or shipment date.

- **Q: What should I do if the shipment arrives damaged?**

A: Note any visible loss or damage on the freight bill, file a claim for damage immediately, and notify the transportation company within 15 days for concealed damage.

WELLS MANUFACTURING

10 Sunnen Dr., St. Louis, MO 63143

telephone: [314-678-6314](tel:314-678-6314)

fax: [314-781-2714](tel:314-781-2714)

www.wellsbloomfield.com

OWNERS MANUAL

DROP-IN ROUND-WELL WARMERS with INFINITE SWITCH CONTROL

MODELS SS4, SS4D SS8, SS8D SS10, SS10D



IMPORTANT: DO NOT DISCARD THIS MANUAL

This manual is considered to be part of the appliance and is to be given to the OWNER or MANAGER of the restaurant, or to the person responsible for TRAINING OPERATORS of this appliance. Additional manuals are available from your WELLS DEALER.

THIS MANUAL MUST BE READ AND UNDERSTOOD BY ALL PERSONS USING OR INSTALLING THIS APPLIANCE. Contact your WELLS DEALER if you have any questions concerning installation, operation or maintenance of this equipment.

LIMITED WARRANTY STATEMENT

- Unless otherwise specified, all commercial cooking equipment manufactured by Wells Manufacturing is warranted against defects in materials and workmanship for a period of one year from the date of original installation or 18 months from the date of shipment from our factory, whichever comes first, and is for the benefit of the original purchaser only.
- THIS WARRANTY IS THE COMPLETE AND ONLY WARRANTY, EXPRESSED OR IMPLIED IN LAW OR IN FACT, INCLUDING BUT NOT LIMITED TO, WARRANTIES OF MERCHANTABILITY OR FITNESS FOR ANY PARTICULAR PURPOSE, AND/OR FOR DIRECT, INDIRECT OR CONSEQUENTIAL DAMAGES IN CONNECTION WITH WELLS PRODUCTS.
- This warranty is void if it is determined that, upon inspection by an authorized service agency, the equipment has been modified, misused, misapplied, improperly installed, or damaged in transit or by fire, flood or act of God. It also does not apply if the serial nameplate has been removed, or if service is performed by unauthorized personnel. The prices charged by Wells Manufacturing for its products are based upon the limitations in this warranty. Seller's obligation under this warranty is limited to the repair of defects without charge by a Wells Manufacturing factory authorized service agency or one of its sub-service agencies. This service will be provided on customer's premises for non-portable models.
- Portable models (a device with a cord and plug) must be taken or shipped to the closest authorized service agency, transportation charges prepaid, for service. In addition to restrictions contained in this warranty, specific limitations are shown in the Service Policy and Procedure Guide. Wells Manufacturing authorized service agencies are located in principal cities. This warranty is valid in the United States and Canada and void elsewhere. Please consult your classified telephone directory, your foodservice equipment dealer or contact:
 - **Wells Manufacturing**
 - 10 Sunnen Dr., St. Louis MO 63143 USA
 - phone [314-678-6314](tel:314-678-6314) or fax [314-781-2714](tel:314-781-2714) for information and other details concerning warranty.

SERVICE POLICY AND PROCEDURE GUIDE and ADDITIONAL WARRANTY EXCLUSIONS

1. Resetting of safety thermostats, circuit breakers, over load protectors, and/or fuse replacements are not covered by this warranty unless warranted conditions are the cause.
2. All problems due to operation at voltages or phase other than specified on equipment nameplates are not covered by this warranty.
Conversion to correct voltage and/or phase must be the customer's responsibility.
3. All problems due to electrical connections not made in accordance with electrical code requirements and wiring diagrams supplied with the equipment are not covered by this warranty.
4. Replacement of items subject to normal wear, to include such items as knobs, light bulbs; and, normal maintenance functions including adjustments of thermostats, adjustment of micro switches and replacement of fuses and indicating lights are not covered by warranty.
5. Damage to electrical cords and/or plug due to exposure to excessive heat are not covered by this warranty.
6. Full use, care, and maintenance instructions supplied with each machine. Noted maintenance and preventative maintenance items, such as servicing and cleaning schedules, are customer responsibility. Those miscellaneous adjustments noted are customer responsibility. Proper attention to preventative maintenance and scheduled maintenance procedures will prolong the life of the appliance.
7. Travel mileage is limited to sixty (60) miles from an Authorized Service Agency or one of its sub-service agencies.
8. All labor shall be performed during regular working hours. Overtime premium will be charged to the buyer.

9. All genuine Wells replacement parts are warranted for ninety (90) days from date of purchase on non-warranty equipment. This parts warranty is limited only to replacement of the defective part(s). Any use of non-genuine Wells parts completely voids any warranty.
10. Installation, labor, and job check-outs are not considered warranty and are thus not covered by this warranty.
11. Charges incurred by delays, waiting time or operating restrictions that hinder the service technician's ability to perform service are not covered by warranty. This includes institutional and correctional facilities.

SHIPPING DAMAGE CLAIM PROCEDURE

NOTE: For your protection, please note that equipment in this shipment was carefully inspected and packaged by skilled personnel before leaving the factory. Upon acceptance of this shipment, the transportation company assumes full responsibility for its safe delivery.

IF SHIPMENT ARRIVES DAMAGED:

1. **VISIBLE LOSS OR DAMAGE:** Be certain that any visible loss or damage is noted on the freight bill or express receipt, and that the note of loss or damage is signed by the delivery person.
2. **FILE CLAIM FOR DAMAGE IMMEDIATELY:** Regardless of the extent of the damage.
3. **CONCEALED LOSS OR DAMAGE:** if damage is unnoticed until the merchandise is unpacked, notify the transportation company or carrier immediately, and file "CONCEALED DAMAGE" claim with them. This should be done within fifteen (15) days from the date the delivery was made to you. Be sure to retain the container for inspection.

Wells Manufacturing cannot assume liability for damage or loss incurred in transit. We will, however, at your request, supply you with the necessary documents to support your claim.

INTRODUCTION

- Thank You for purchasing this Wells Manufacturing appliance.
- Proper installation, professional operation and consistent maintenance of this appliance will ensure that it gives you the very best performance and a long, economical service life.
- This manual contains the information needed to properly install this appliance, and to use and care for the appliance in a manner which will ensure its optimum performance.

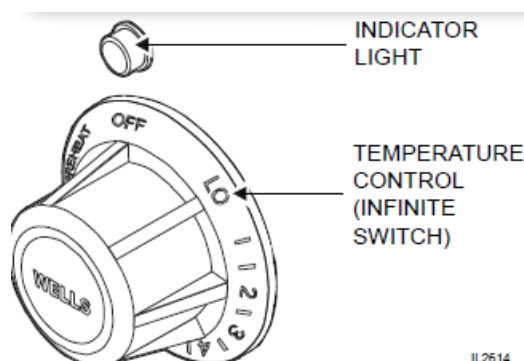
SPECIFICATIONS

ELECTRICAL SPECIFICATIONS				
MODEL	VOLTS	AMPS	WATTS	POWER SUPPLY CORD
SS4 / SS4D	120 VAC 1ø	3.8A	450W	NOT SUPPLIED
	208 VAC 1ø	1.6A	338W	
	240 VAC 1ø	1.9A	450W	
SS8 / SS8D	120VAC 1ø	3.8A	450W	NOT SUPPLIED
	208 VAC 1ø	1.6A	338W	
	240 VAC 1ø	1.9A	450W	
SS10 / SS10D	120VAC 1ø	3.8A	450W	NOT SUPPLIED
	208 VAC 1ø	1.6A	338W	
	240 VAC 1ø	1.9A	450W	

FEATURES & OPERATING CONTROLS

1. INFINITE SWITCH

1. On INFINITE SWITCH CONTROLLED warmers, power is applied to the heating element based on the control knob position, which varies the duty cycle of the heating element.
2. The desired temperature is controlled by rotating the TEMPERATURE CONTROL KNOB. The knob may have a numeric scale, where higher numbers correspond to higher temperature. LO is the lowest temperature setting; PREHEAT is a “continuous on” setting. Infinite switch controlled warmers are equipped with a hi-limit device to prevent overheating. The hi-limit will self-reset after the warmer has cooled.
3. On warmers equipped with an INDICATOR LIGHT, the light will glow when the infinite switch is in any position other than OFF.
4. The TEMPERATURE CONTROL KNOB will rotate without stopping, with PREHEAT and OFF having obvious detents. The OFF position is a “positive” OFF (i.e. the switch is positively held in the open position).



IMPORTANT:

DO NOT LEAVE ON “PREHEAT” Unit may cycle on hi-limit control, leading to premature failure of the hi-limit control device.

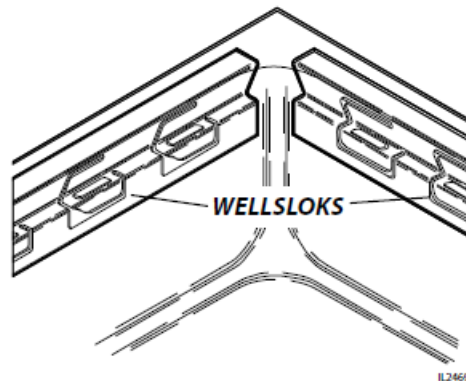
NOTE: An infinite switch controls temperature by varying the ratio of “on” time to “off” time. Thus, no temperature sensing device is required.

2. MOUNTING

1. Top-mounted drop-in warmers are equipped with WELLSLOKS, uniquely designed turnout tabs which help secure the warmer top flange to the countertop.
2. See the Installation Instructions, supplied with the particular appliance, for details.

3. DRAINS

1. "D" units (e.g. SS-10D) have drains for each well, with each pan having an individual drain valve.



PRECAUTIONS AND GENERAL INFORMATION

- This appliance is intended for use in commercial establishments only.
- This appliance is intended to hold pre-heated food for human consumption. No other use is recommended or authorized by the manufacturer or its agents.
- Operators of this appliance must be familiar with the appliance use, limitations and associated restrictions. Operating instructions must be read and understood by all persons using or installing this appliance.
- Cleanliness of this appliance is essential to good sanitation. Read and follow all included cleaning instructions and schedules to ensure the safety of the food product.
- Disconnect this appliance from electrical power before performing any maintenance or servicing.
- This appliance is not jet stream approved. Do not direct water jet or steam jet at this appliance, or at any control panel or wiring. Do not splash or pour water on, in or over any controls, control panel or wiring.
- Exposed surfaces of this appliance can be hot to the touch and may cause burns.
- Do not operate this appliance if the control panel is damaged. Call your Authorized Wells Service Agent for service.
- The technical content of this manual, including any wiring diagrams, schematics, parts breakdown illustrations and/or adjustment procedures, is intended for use by qualified technical personnel.
- Any procedure which requires the use of tools must be performed by a qualified technician.
- This manual is considered to be a permanent part of the appliance. This manual and all supplied instructions, diagrams, schematics, parts breakdown illustrations, notices and labels must remain with the appliance if it is sold or moved to another location.
- This appliance is made in the USA. Unless otherwise noted, this appliance has American sizes on all hardware.



WARNING: SHOCK HAZARD

All servicing requiring access to non-insulated electrical components must be performed by a factory authorized technician.

DO NOT open any access panel which requires the use of tools. Failure to follow this warning can result in severe electrical shock.



CAUTION: RISK OF DAMAGE



DO NOT connect or energize this appliance until all installation instructions are read and followed. Damage to the appliance may result if these instructions are not followed.



CAUTION: HOT SURFACE

Exposed surfaces can be hot to the touch and may cause burns.

AGENCY LISTING INFORMATION

- Refer to the product nameplate for the specific appliance for agency listings. In general:
- This appliance conforms to NSF Standard 4 for sanitation only if installed in accordance with the supplied Installation Instructions.
- Underwriters Laboratory recognized () warmers (UL File E6070) – Since the warmer is only a single component of a complete installation, the finished installation of an  unit requires additional evaluations to Underwriters Laboratory standards.



STD 4



E6070

UL Recognized Warmers

INSTALLATION

- **NOTE:** DO NOT discard the carton or other packing materials until you have inspected the appliance for hidden damage and tested it for proper operation.
Refer to SHIPPING DAMAGE CLAIM PROCEDURE on the inside front cover of this manual.
- **WARNING: RISK OF INJURY**
Installation procedures must be performed by a qualified technician with full knowledge of all applicable electrical and plumbing codes. Failure can result in personal injury and property damage.
- **CAUTION FIRE HAZARD**
Avoid storing flammable or combustible materials in, on or near the appliance.
- **IMPORTANT:** For warmers installed in plastic counter tops, the counter material must be protected from the

heat of the warmer in order to prevent discoloration and/or deterioration. Wellsloks are not suitable for this purpose. The installer should contact the manufacturer or distributor of the countertop material for specific instructions.

UNPACKING & INSPECTION

- Carefully remove the appliance from the carton. Remove all protective plastic film, packing materials and accessories from the Appliance before connecting electrical power or otherwise performing any installation procedure.
- Carefully read all instructions in this manual and the Installation Instruction Sheet packed with the appliance before starting any installation.
- Read and understand all labels and diagrams attached to the appliance.
- Carefully account for all components and accessories before discarding packing materials. Store all accessories in a convenient place for later use.

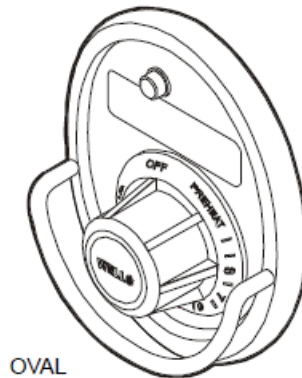
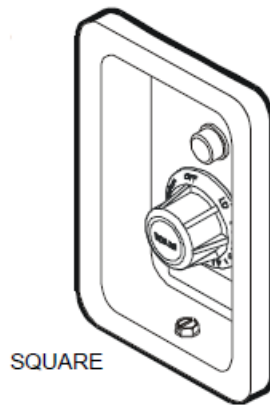
INSTALLATION NOTES

1. Installation and start up of built-in warmers **MUST** be performed by an authorized installation company.
2. It is the responsibility of the installer to verify that this warmer installation is in compliance with the specifications listed in this manual and on the specification sheet provided.
3. It is the **RESPONSIBILITY OF THE INSTALLER** to check with the authority having jurisdiction, in order to verify that this warmer installation is in compliance with local code requirements.
4. Water supply and drain installation must meet all applicable local, state and federal plumbing codes and ordinances.
5. Refer to Installation Instructions included with the warmer for Underwriters Laboratories conditions of acceptability, electrical requirements and other installation concerns.

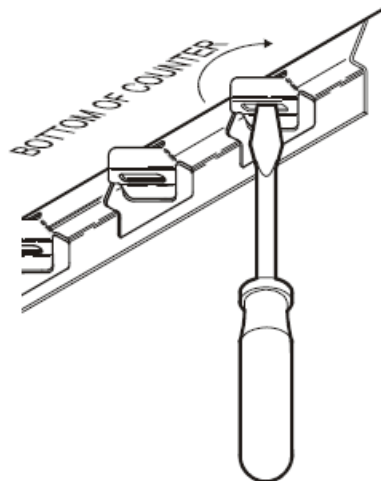
BUILT-IN WARMERS

1. This is a **GENERAL GUIDE**. For specific cutout dimensions and other installation details, refer to the Installation Instructions supplied with the warmer.
2. Cutout dimensions for warmer units and control panels are listed on the Installation Instructions provided with the warmer.
3. Verify style of control panel (i.e. square, oval, etc.) before making cutout.

NOTE: Cutout dimensions are different for square and oval control panels, and for wood and metal counters. Verify the dimensions are correct for the installation before making the cutout.



4. For “top-mounted” warmers (i.e. warmers mounted from above the counter top):
 1. Verify that provided sealants are applied to the underside of the warmer top flange prior to setting the unit into the cutout.
 2. After installation, verify that the tabs on the Wellsloks are turned out to lock the warmer into the counter
 3. Apply a thin bead of food-grade silicone sealant around the flange to seal it to the counter.
 4. Wellslok extension kits are available for installing warmers in counter tops where the standard Wellslok would not normally reach. The extension kit will adapt to counter tops up to 1¾” thick.



NOTE: Damage caused by leaks due to improper installation is NOT covered by warranty.

ELECTRICAL INSTALLATION

1. Refer to the product nameplate. Verify the electrical service power. Voltage and phase must match the nameplate specifications. Wiring the warmer to the wrong voltage can severely damage the unit or cause noticeably decreased performance.

2. Available electrical service amperage must meet or exceed the specifications listed on the specification sheet provided with the warmer.
3. Warmer and control unit must be connected to an appropriate building ground. Ground connection will be



marked "GND" or " " .

NOTE: Wire gauge, insulation type and temperature rating , as well as type, size and construction of conduit, must meet or exceed applicable specifications of local codes and of the National Electrical Code.

PLUMBING INSTALLATION

For use in the State of Massachusetts, this appliance must be installed in compliance with Massachusetts Fuel Gas and Plumbing Code CMR 248.

1. **IMPORTANT:** All plumbing installations must be performed by a qualified plumber.
2. For SS4D, SS-8D and SS10D drainline units, some jurisdictions may require an approved air gap or other back-flow prevention device in the drain. It is the responsibility of the plumber to determine such requirement, to provide and properly install the required device.
3. For SS4D, SS8D and SS10D drainline units, the drain must be attached with a union at the drain line fitting. This is necessary to provide for future maintenance of the heating element.



CAUTION: SHOCK HAZARD

The ground lug of this appliance must be connected to a suitable building ground.

- **IMPORTANT:**
Contact a licensed electrician to install and connect electrical power to the appliance.
- **IMPORTANT:**
Damage due to being connected to the wrong voltage or phase is NOT covered by warranty.
- **IMPORTANT:** Electrical installation other than as specified on the specification sheet will void the UL listing, and may void the warranty.
- **NOTE:** Plumb connections must be made in compliance with all Federal, State and Local Plumbing Codes and Ordinances.

OPERATION

CAUTION: HOT SURFACE

Exposed surfaces can be hot to the touch and may cause burns.

CAUTION: SHOCK HAZARD

DO NOT splash or pour water onto control panel or wiring.

- Always use an inset.
- DO NOT place food directly into the warmer.
- Always pour hot water into the warmer before it is preheated. pour water into a dry, heated warmer. This may damage the unit.

- DO NOT put ice into a warmer pan. This will cause condensation on the inside of the warmer. Damage caused by condensation is NOT covered by warranty.
- Stir thick food items frequently to keep food heated uniformly.
- Keep insets covered to maintain food quality and temperature.

WET OR DRY OPERATION for WARMERS

1. Carefully read the description of the warmer operation on the specification sheet.
2. Most warmers are designed for WET OR DRY operation.
 1. Warmers may be used wet, or may be used dry. However warmers may NOT be used wet-to-dry or dry-to-wet unless they have been allowed to cool to room temperature between the change in wet or dry operation.
 2. Wells Manufacturing recommends operating WET for consistent food heating.
 3. If your wet-operation warmer is allowed to run dry, turn it OFF and allow to cool to room temperature before adding water.
3. If the warmer is to be used for WET operation, add approximately 1" of hot tap water before turning the warmer on. Use of hot water will allow a faster preheat.
 1. Check the water level frequently and add hot water as necessary to prevent the warmer from running dry. Do not add water to the warmer if it has run dry.
 2. If your wet-operation warmer is allowed to run dry, turn it OFF and allow to cool to room temperature before adding water.
4. Damage caused by allowing a wet-operation warmer to run dry, is NOT covered by warranty. Damage caused by adding water to a dry warmer when hot is NOT covered by warranty.

PRE-HEATING THE WARMER

1. Place desired pan(s) or inset(s) with appropriate adapter top on warmer.
 1. Insets are available as accessories in 2½ qt., 4qt., 7 qt., and 11 qt. sizes with lids and adapter tops.
 2. For dry operation, a 6" deep pan or inset is recommended.
2. Infinite Switch Controlled Warmers: Turn temperature control to PREHEAT.
3. Allow warmer to PREHEAT for approximately 15 minutes, then set the control for the desired temperature. Be sure to keep the warmer covered during preheat and operation.

OPERATION

1. Always use an inset. DO NOT place food directly into the warmer.
2. Check water level in wet-operation warmer frequently during use. Running warmers dry will lower the temperature of the food in the insert pan, and may damage the warmer.
3. Alternating between wet and dry operation in any individual warmer is not recommended.
4. DO NOT use metal tools, steel wool, or caustic or abrasive cleanser to clean warmer pan.

MAINTENANCE INSTRUCTIONS

CARE OF STAINLESS STEEL

- Stainless steel is a marvelous material: strong, lustrous and low maintenance. With a minimum of care, it will normally retain its beauty and durability for the life of the equipment. In some applications, however, special care is required in order to maintain stainless steel's special properties.
- External components, such as cabinets and control panels, are finished with a grain pattern. This pleasing finish is best maintained by cleaning with a non-abrasive cleanser applied with a soft cloth. Rub only in the direction of the grain. In the absence of visible grain, rub only along the longest axis of the appliance.
- Restore stainless steel's luster by applying a polish specifically made for stainless steel. Spray on, wipe off with a soft cloth, rubbing in the direction of the grain.
- Never use metal implements, wire brushes, abrasive scratch pads or steel wool to clean stainless steel.
 - Poor Water Quality: Hard water (water with a high content of dissolved minerals) will leave mineral deposits when allowed to dry. Calcium (lime) can buildup on heated surfaces, even under water. If left unattended, hard water spots and lime buildup can lead to rusting, corrosion and pitting.
 - Contact with Chlorides: Chlorides (specific compounds of chlorine) are found in food, table salt and many cleansers. Chlorides can attack the surface of stainless steel, resulting in corrosion and pitting.
- Keep your stainless steel warmers clean and free from calcium buildup. Use alkaline, alkaline chlorinated or non-chloride cleanser.
- Use citric acid-based cleaners to remove calcium deposits.
- For additional information, please read the NAFEM Stainless Steel Equipment and Cleaning Guide. Contact NAFEM at :
 - North American Association of Food Equipment Manufacturers 401 N. Michigan Avenue
 - Chicago, Illinois 60611-4267
 - [312-644-6610](tel:312-644-6610)

CLEANING INSTRUCTIONS

- **CAUTION: SHOCK HAZARD**

Do NOT splash or pour water into or over any control panel or wiring.

- **CAUTION: SHOCK HAZARD**

Disconnect warmer from electric power before cleaning

- **CAUTION: BURN HAZARD**

Allow warmer to cool completely before cleaning.

DAILY CLEANING INSTRUCTIONS

- **PREPARATIONS:** Turn control knob(s) to OFF. Allow warmer to cool before proceeding.

Remove any insets, pans and/or adapter tops (if used). Drain or remove water from well if used for wet operation.

- **FREQUENCY:** Minimum – daily.

- **TOOLS:** Mild Detergent

- Solution: 10 Parts Warm Water to 4 Parts Vinegar Plastic Scouring Pad
- Clean Cloth or Sponge
- Food-Grade Silicone Sealant

1. Wipe entire unit down using a clean cloth or sponge and mild detergent.

2. Use a plastic scouring pad to remove any hardened food particles or mineral deposits. **IMPORTANT: DO NOT** use steel wool for cleaning.
3. Rinse warmer thoroughly with a vinegar and water solution to neutralize all detergent/cleanser residue.
4. Inspect warmer flange-to-counter seal. Reseal with food-grade silicone sealant if necessary. Failure to do so may allow grease and water to leak into insulation and heating element, causing a potential fire and/or electric shock hazard.
5. Inspect warmer tank for damage. Damage to the outer body may allow grease and water to leak into insulation and heating element, causing a potential fire and/or electric shock hazard. Contact your Authorized Wells Service Agency to inspect warmer if water or grease contamination is suspected.
6. Close drain valve. Add proper amount of warm water. Turn control knob(s) ON and check for proper operation.

WEEKLY CLEANING INSTRUCTIONS

- **PREPARATIONS:** Remove any insets, pans and/or adapter tops.
Drain or remove water from well if used for wet operation.
 - **FREQUENCY:** Weekly, or whenever lime or scale is seen accumulating on the sides of the warmer pans.
 - **TOOLS:** Commercial Delime Cleaner
Plastic Scouring Pad
Clean Cloth or Sponge
1. Add water to pans until water is at normal operating level (1" – 1 1/2" deep) or covers accumulated scale.
 2. Heat water to maximum temperature (190°F or higher).
 3. Pour contents of one package of commercial delime cleaner into each warmer pan. Stir to dissolve cleaner.
Turn heat control OFF. Cover pans.
 4. Allow solution to soak at least one hour, or overnight for heavy scale buildup.
 5. Drain hot water from pans. Scrub with a plastic scouring pad. Rinse thoroughly with hot water, then dry.
 6. Refill pans with hot tap water and resume operation.
 7. Heavy scale buildup may require additional treatments.

CAUTION: CHEMICAL BURN HAZARD

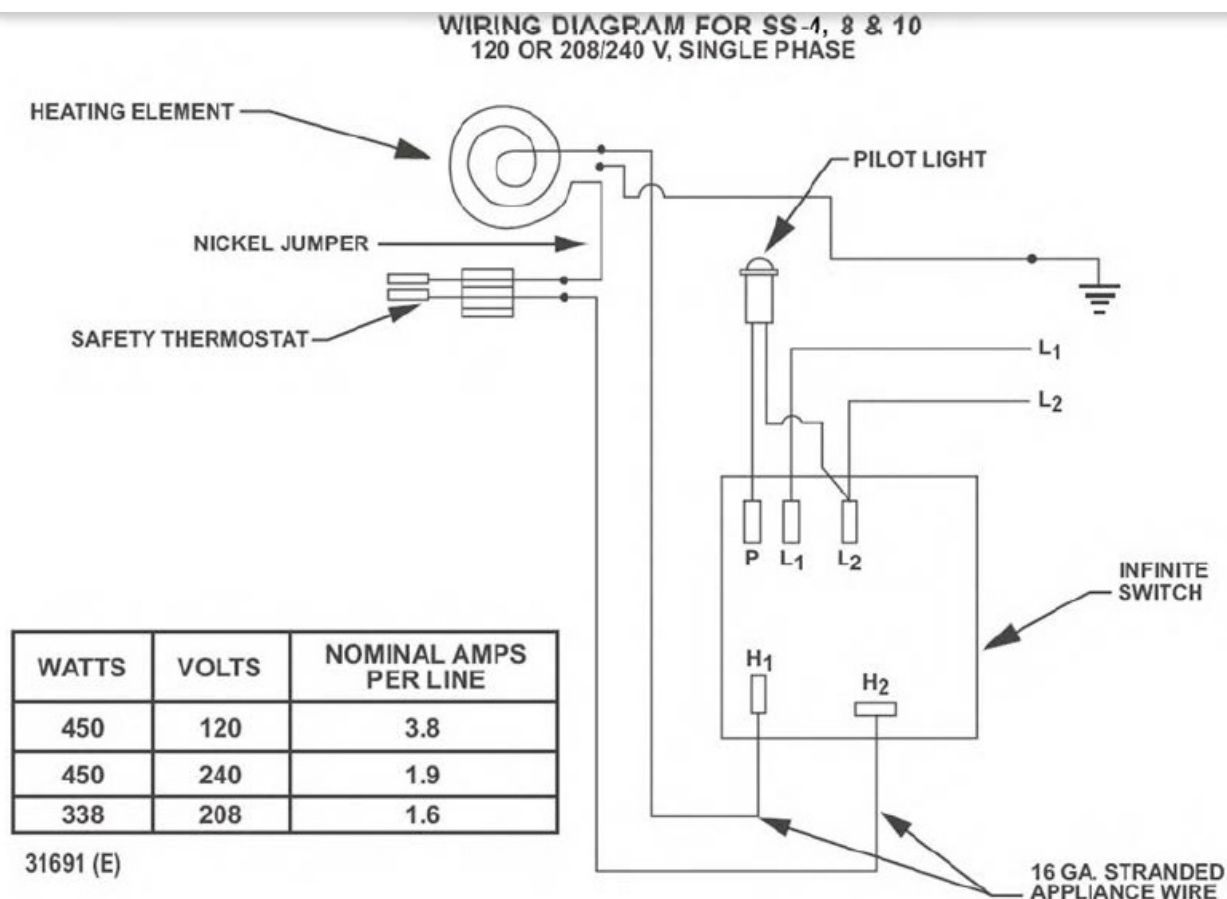
Deilimng chemicals may be caustic. Wear appropriate personal protective equipment. Follow cleaner manufacturer's instructions for safest use.

TROUBLESHOOTING SUGGESTIONS

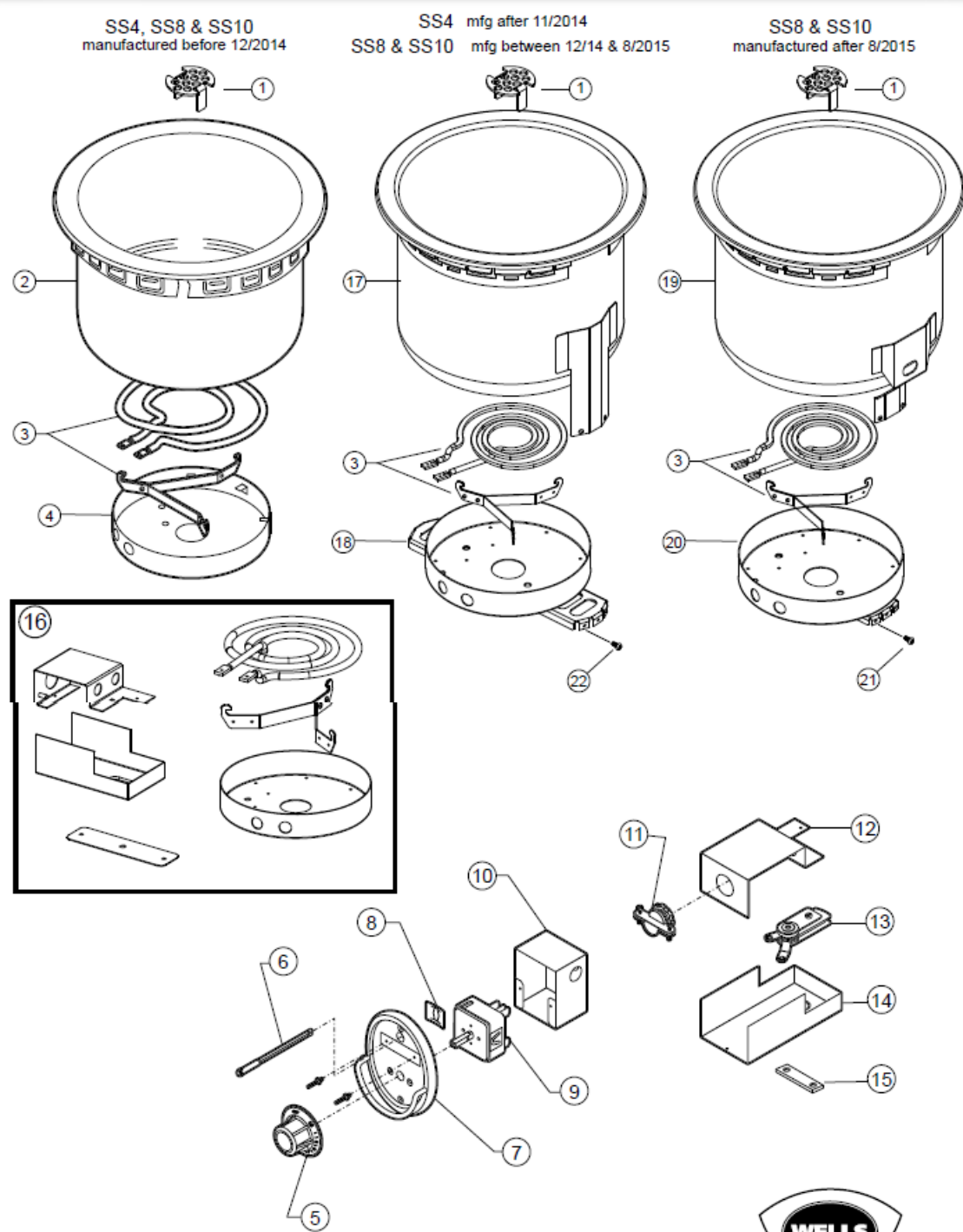
SYMPTOM	POSSIBLE CAUSE	SUGGESTED REMEDY
No power to warmer	Circuit breaker off or tripped	Reset circuit breaker
Warmer will not heat	Temperature control not set	Set control to desired temperature
Warmer trips circuit breaker	Wet insulation	Verify flange-to counter seal is sound, or reseal with food-grade silicone sealant
	Pan leaking or other internal damage	Contact your Authorized Wells Service Agency for repairs
	Internal damage	Contact your Authorized Wells Service Agency for repairs
Warmer slow to heat	Mineral deposits on pan acting as a insulator	Clean pan(s) with delime cleaner
	Wired to wrong voltage	Verify supply voltage - must match voltage on warmer nameplate
Drain-equipped unit will not hold water	Drain valve not fully closed	Check drain valve for debris and close fully
	Drain valve damaged or pan(s) leaking	Contact your Authorized Wells Service Agency for repairs

- There are no user-serviceable components in this appliance.
- In all instances of damage or malfunction, contact your Authorized Wells Service Agency for repairs.

WIRING DIAGRAM



EXPLODED VIEW & PARTS LIST



Model: SS-4, SS-8 & SS-10
SS-4D, SS-8D & SS-10D (with Drain)


IL1997 Rev. G 10/19/15

EXPLODED VIEW & PARTS LIST

Model: SS4, SS8, SS10 Round Warmers			
Fig No	Part No	Description	Application
1	2V-Z17446	SCREEN DRAIN ASSY, WARMERS	DRAIN UNITS
	P2-43527	POT FOR SS4	SS4
	WS-63528	POT FOR SS4D	SS4D

2	WS-50391	POT FOR SS8	SS8
	WS-50504	POT FOR SS8D	SS8D
	PS-WL0778	POT FOR SS8DI KIT	SS8DI
	WS-51232	POT FOR SS10	SS10
	PS-WL0779	POT FOR SS10D KIT	SS10D
3	WS-506274	KIT, ELEMENT & SUPPORT	120V
	WS-506275		208/240V
4	P2-WL0691	ASSY ELEMENT MOUNT	SS4
	P2-WL0689		SS8
	P2-WL0690		SS10
5	2R-44373	KNOB CONTROL ASSY	
6	WS-50385	LIGHT SIGNAL RED, w/CLIP	
7	2V-WL0049	PANEL, CONTROL OVAL/GUARD	
8	2C-43270	RETAINER CLIP, PILOT LIGHT	
9	2E-30562	INFINITE SWITCH	240V
	2E-30570		120V
10	WS-62059	CONTROL BOX w/BUSHING	
11	2K-37748X	FTG CONDUIT STRAIGHT 3/8"	
12	P2-WL0323	BOX OUTLET ASSY SS4,8,10	
13	WS-50374	THERMO HI-LIMIT, SFT, 550°F	
14	P2-31862	COVER OUTLET BOX WARMERS	
15	B8-42091	JUMPER THERMOSTAT	
16	WS-50387	ELEM 120V KIT-WARMER	120V
	WS-50389	ELEM 240V KIT-WARMER	240V
17	P2-WL0718	POT FOR SS4	SS4
	P2-WL0717	POT FOR SS4D	SS4D
	P2-WL0655	POT FOR SS8	SS8
	P2-WL0656	POT FOR SS8D	SS8D
	P2-WL0684	POT FOR SS10	SS10
	P2-WL0685	POT FOR SS10D	SS10D
18	P2-WL0691	ASSY ELEMENT MOUNT	SS4
	P2-WL0689		SS8
	P2-WL0690		SS10

19	P2-WL0718	POT FOR SS4	SS4
	P2-WL0717	POT FOR SS4D	SS4D
	P2-WL0760	POT FOR SS8	SS8
	P2-WL0761	POT FOR SS8D	SS8D
	P2-WL0758	POT FOR SS10	SS10
	P2-WL0759	POT FOR SS10D	SS10D
20	P2-WL0691	ASSY ELEMENT MOUNT	SS4
	P2-WL0691		SS8
	P2-WL0757		SS10
21	2C-33935	SCREW 6ABX5/16 PH PAN SMS	
NI	P2-37496AEW	WIRE SET SS10, 8, 4, 72" LDS	UNITS w/ 6' LDS

PARTS & SERVICE

DESCRIPTION	PART NO.
-------------	----------

ADAPTERS & INSETS

Adapter top, convert SS8 to hold 4 qt. inset	WS-20177
--	--------------------------

Adapter top, convert SS10 to hold 4 qt. inset	WS-20822
---	--------------------------

Adapter top, convert SS10 to hold 7 qt. inset	WS-20175
---	--------------------------

Adapter top, convert SS206 to hold two 7 qt. insets	WS-20176
---	--------------------------

4 QT. ROUND INSET w/ lid	WS-20774
--------------------------	--------------------------

7 QT. ROUND INSET w/ lid	WS-20587
--------------------------	--------------------------

11 QT. ROUND INSET w/ lid	WS-20908
---------------------------	--------------------------

11 QT. ROUND INSET w/ hinged lid	WS-21057
----------------------------------	--------------------------

ACCESSORIES

8 oz. SOUP LADLE	2L-47567
------------------	--------------------------

DRAIN VALVE EXTENSION KIT , extension from drain to counter front with remote handle, for use with "D" models only, excluding "DM" models	WS-20385
--	--------------------------

IMPORTANT: Use only factory authorized service parts and replacement filters.

For factory authorized service, or to order factory authorized replacement parts, contact your Wells authorized service agency, or call:

Wells Manufacturing

- 10 Sunnen Dr.,

- St. Louis MO 63143 USA
- **Service Dept.**
- phone: [314-678-6314](tel:314-678-6314)
- fax: [314-781-2714](tel:314-781-2714)

Service Parts Department can supply you with the name and telephone number of the WELLS AUTHORIZED SERVICE AGENCY nearest you.

Always use an inset. DO NOT place food directly into the warmer pan.

CUSTOMER SERVICE DATA <small>please have this information available if calling for service</small>			
RESTAURANT _____	LOCATION _____		
INSTALLATION DATE _____	TECHNICIAN _____		
SERVICE COMPANY _____			
ADDRESS _____		STATE _____	ZIP _____
TELEPHONE NUMBER (____) ____ - _____			
EQUIPMENT MODEL NO. _____			
EQUIPMENT SERIAL NO. _____			
VOLTAGE: (check one) 120 <input type="checkbox"/> 208 <input type="checkbox"/> 240 <input type="checkbox"/>			



**Wells Bloomfield proudly supports CFESA
Commercial Food Equipment Service Association**



WELLS MANUFACTURING
 10 Sunnen Dr., St. Louis, MO 63143
 telephone: [314-678-6314](tel:314-678-6314)
 fax: [314-781-2714](tel:314-781-2714)
www.wellsbloomfield.com



[WELLS SS4 Drop In Round Well Warmers with Infinite Switch Control](#) [pdf] Owner's Manual

SS4, SS4 Drop In Round Well Warmers with Infinite Switch Control, Drop In Round Well Warmers with Infinite Switch Control, Round Well Warmers with Infinite Switch Control, Well Warmers with Infinite Switch Control, Infinite Switch Control, Switch Control, Control

References

- [User Manual](#)

[Manuals+](#), [Privacy Policy](#)

This website is an independent publication and is neither affiliated with nor endorsed by any of the trademark owners. The "Bluetooth®" word mark and logos are registered trademarks owned by Bluetooth SIG, Inc. The "Wi-Fi®" word mark and logos are registered trademarks owned by the Wi-Fi Alliance. Any use of these marks on this website does not imply any affiliation with or endorsement.