



Contents [[hide](#)]

- [1 WEINTEK MT8052iP Series HMI Touchscreen Panel](#)
- [2 Product Specifications](#)
- [3 Installation and Startup Guide](#)
- [4 Power Connections](#)
- [5 System Settings](#)
- [6 EasyBuilder Pro Software Settings](#)
- [7 Communication Connections](#)
- [8 Touchscreen Calibration Mode](#)
- [9 Battery Replacement](#)
- [10 Limited Warranty](#)
- [11 Frequently Asked Questions](#)
- [12 Documents / Resources](#)
 - [12.1 References](#)



WEINTEK MT8052iP Series HMI Touchscreen Panel



Product Specifications

- Product Series: MT8052iP
- Environment: NEMA 4 rated (indoor use only)
- Electrical Environment: European CE requirements compliant
- Altitude: Refer to the Datasheet for details
- IP Rating: Refer to Datasheet for details

Unpacking and Inspection

Unpack the delivery and check for any damage. Contact the supplier in case of damage. Place the operator panel on a stable surface during installation to prevent damage.

Package Contents:

- Installation Instruction (2-sided A4) x1
- Human Machine Interface x1
- Power Connector x1
- Brackets & Screws pack x1

Installation Instructions

Follow the instructions provided to correctly install the HMI unit.

Power Connections

Connect the positive DC line to the '+' terminal and the DC ground to the '-' terminal.

System Settings

When HMI powers up and displays an image, click on the system settings button.

- Default System Password: 111111
- Set your own passwords in the Security tab.
- Connect to the network through an RJ-45 cable in the Network tab.

EasyBuilder Pro Software Settings

Configure settings using the EasyBuilder Pro software.

Communication Connections

Refer to the manual for COM1 and COM3 RS-485 connections and use the appropriate screws for D-SUB connector installation.

Touchscreen Calibration Mode

To enter touchscreen calibration mode, press and hold anywhere on the screen when the HMI starts. Follow onscreen instructions for calibration.

Battery Replacement


- **Battery Specification:** Type CR1220, Rated 3V

Battery replacement should be done by qualified personnel. For detailed instructions, refer to the provided link.

Installation and Startup Guide

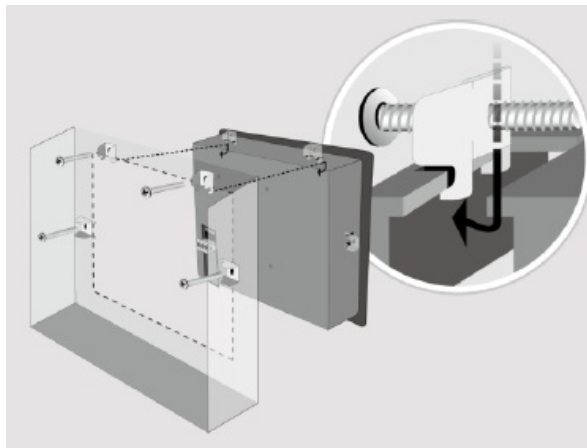
This document covers the installation of the MT8052iP Series HMI. For the detailed specifications and operation, please refer to the Datasheet, Brochure, and EasyBuilder Pro User Manual. Please read all warnings, precautions, and instructions on the device carefully before use.

Install Environment:

NEMA Rating	The HMI product is NEMA 4 rated (indoor use only).
Electrical Environment	The HMI product has been tested to conform to European CE requirements. This means that the circuitry is designed to resist the effects of electrical noise. This does not guarantee noise immunity in severe cases. Proper wire routing and grounding will insure proper operation.
Environmental Considerations	(1) Make sure that the units are installed correctly and that the operating limits are followed. Avoid installing units in environments where severe mechanical vibration or shocks are present. (2) Do not operate the unit in areas subject to explosion hazards due to flammable gases, vapors or dusts. (3) Do not install the unit where acid gas, such as SO ₂ exists. (4) This device should be mounted in the vertical position and for use on the flat surface enclosure. (5) For use in Pollution Degree 2 Environment and dry location. (6) Relative Humidity: 10% ~ 90% (non-condensing)
Altitude	3,000 m
IP Rating	IP 65
Cleaning Considerations	Clean the device using dry cloths. Do not use liquid or spray detergents for cleaning.
 Warning	Protection impairment if used in a manner not specified by the manufacturer. Déficit de protection si utilisé d'une manière non spécifiée par le fabricant.

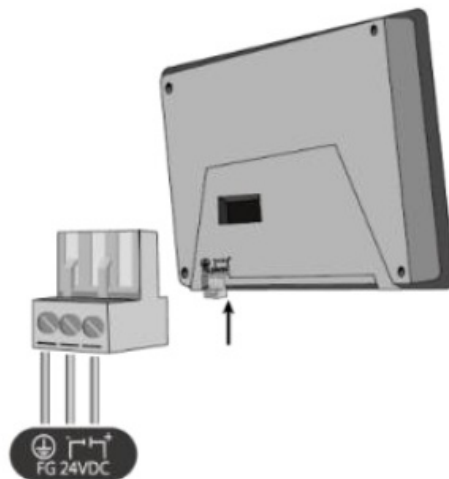
Unpacking the Unit

- Unpack and check the delivery. If damage is found, please contact the supplier.
- NOTE: Place the operator panel on a stable surface during installation. Dropping it or letting it fall may cause damage.
- The package includes:
 1. Installation Instruction, 2-sided A4 *1
 2. Human Machine Interface *1
 3. Power Connector *1
 4. Brackets & Screws *1 pack Installation Instructions
- Use a control box that provides enough stiffness. Cutout Dimension: 119 mm x 93 mm. Secure the operator panel in position, using all the fastening holes and the provided brackets and screws. Screw
- Torque: 2.6 ~ 3.9 lbf. In. (For reaching a waterproof effect and preventing the panel from being deformed.)
- Plan for adequate space around the unit and inside the enclosure, for ventilation and cables. Consider the heat from other devices inside the enclosure. The ambient temperature around the unit must be 0 ~ 55°C.
- Minimum required clearances (along the overlay): Top 15 mm / Bottom 50 mm / Sides 15 mm Maximum panel thickness: 4.5 mm



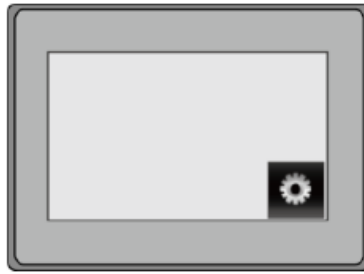
Power Connections

- Power Connector Specifications:
- Wire AWG: 24~12
- Wiring Conductor Minimum Temperature: 75°C
- Screw Torque: 4.5 lbf-in (max.)
- Copper conducts only.
- NOTE: Connect the positive DC line to the '+' terminal and the DC ground to the '-' terminal.



System Settings

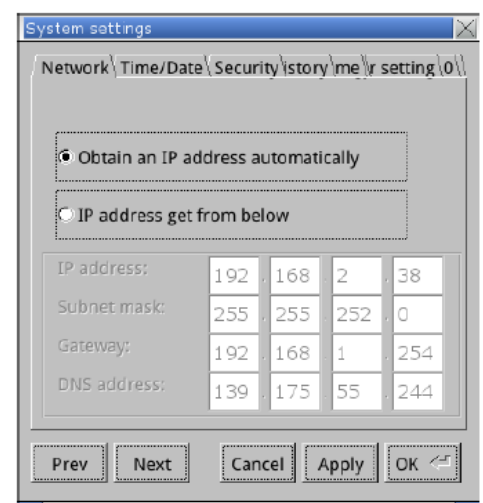
When HMI is powered up and displays an image, click the system setting button.
(Default System Password: 111111)



- Go to the Security tab, the default password is 111111, click the buttons to set your own passwords.

In the MISC2 tab, if “Enable [Reset HMI to default] button in calibration mode” is selected, the [RESET HMI TO DEFAULT] button can be found in calibration mode, as shown in Part 8.

- Go to the Network tab, and you may choose to auto-get a DDHCP, or designate your own IP. It is necessary to connect the HMI to your network through an RJ-45 cable.



EasyBuilder Pro Software Settings

- Launch EasyBuilder Pro software, select your project file, press F7 shortcut key to open the download dialog box: Select Ethernet > IP tab > Enter your HMI IP > Click Download to download this project file to HMI.
- Using screensavers and backlight savers is recommended in order to avoid image persistence caused by displaying the same image on the HMI for a long time.
- Flash memory has a limited write lifespan, and frequent data writing (e.g., Event Log, Data Sampling) can accelerate degradation. Consider write frequency and lifespan management in system design to prevent data loss. Refer to “3.2.1. Prolong the Lifespan of Flash Memory” in the Product Security User Manual for guidance. (Please

refer to the EasyBuilder Pro User Manual for software operation details.)

Communication Connections

NOTE:

1. COM1 and COM3 RS-485 2W support MPI 187.5K, please use one at a time.
2. Use #4-40 UNC screws for the D-SUB connector installation.

<div>9 Pin, Male, D-sub</div> <div>COM1 [RS232]</div> <div>COM1 [RS485]</div> <div>COM3 [RS485]</div> <div><div>1 2 3 4 5</div><div>6 7 8 9</div></div>	PIN#	COM1 [RS485]		COM1 [RS232] 2W	COM3 [RS485] 2W
		4W	2W		
	1	Rx-	Data-		
	2	Rx+	Data+		
	3	Tx-			
	4	TX+			
	5	GND			
	6			TxD	
	7				Data-
	8				Data+
	9			RxD	

Touchscreen Calibration Mode

- Press and hold anywhere on the screen when the HMI starts until it enters touchscreen calibration mode. If “Enable
- [Reset HMI to default] button in calibration mode is selected as described in Part 5 System Settings, then [RESET HMI TO DEFAULT] and [SYSTEM SETTINGS] buttons can be found in calibration mode. Follow the onscreen guide and press [yes] to restore factory default, and please note that the projects and data stored in the unit will all be cleared after this.



Battery Replacement

- Battery Specification: Type CR1220, Rated 3V
- Battery replacement shall be performed by qualified personnel (engineer) only, and care must be taken when handling lithium batteries. For more information on battery replacement and disposal considerations, please refer to the following link:
- http://www.weintek.com/download/MT8000/eng/FAQ/FAQ_103_Replace_Battery_en.pdf

CAUTION



Power

NOTE: Make sure that all local and national electrical standards are met when installing the unit. Contact your local authorities to determine which codes apply.

Use power output that meets SELV (Safety Extra-Low Voltage) requirements. The unit can be powered by DC power only, voltage range: 24±20%, compatible with most controller DC systems. The power conditioning circuitry inside the unit is accomplished by a switching power supply. The peak starting current can be as high as 2A.



Fusing Requirements

If the display does not come on within 5 seconds of power up, remove power. A resettable fuse will protect against overcurrent faults in DC circuit and the resetting will take place after a period of time. Check wiring for proper connections and try to power up again.



High Voltage

A resettable fuse will prevent damage for overcurrent condition however it isn't guaranteed. DC voltage sources should provide proper isolation from main AC power and similar hazards.



Emergency Stop

A Hard-wired EMERGENCY STOP should be fitted in any system using an HMI to comply with ICS Safety Recommendations.



Supply Voltage Condition

Do not power the unit and inductive DC loads, or input circuitry to the controller, with the same power supply. Note: The 24 VDC output from some controllers may not have enough current to power the unit.



Wire Routing

- Power wire length should be minimized (Max: 500m shielded, 300m unshielded).
- Please use twisted pair cables for power wire and signal wire and conform to the impedance matching.
- If wiring is to be exposed to lightning or surges, use appropriate surge suppression devices.
- Keep AC, high energy, and rapidly switching DC power wiring separated from signal wires.
- Add a resistor and capacitor in the parallel connection between the ungrounded DC power supply and the frame ground. This provides a path for static and high frequency dissipation. Typical values to use are 1M Ohm and 4700pF.

DANGER



Hardware Considerations

The system designer should be aware that devices in Controller systems could fail and thereby create an unsafe condition. Furthermore, electrical interference in an operator interface can lead to equipment start-up, which could result in property damage and/or physical injury to the operator.

If you use any programmable control systems that require an operator, be aware that this potential safety hazard exists and take appropriate precautions. Although the specific design steps depend on your particular application, the following precautions generally apply to installation of solid-state programmable control devices, and conform to the guidelines for installation of Controllers recommended in NEMA ICS 3-304 Control Standards.



Programming Considerations

To conform to ICS Safety Recommendations, checks should be placed in the controller to ensure that all writable registers that control critical parts of plant or machinery have limit checks built into the program, with an out-of-limit safe shut down procedure to ensure safety of personnel.

Limited Warranty


- This product is limited warranted against defects in design and manufacture.
- The proven defective product will either be repaired or replaced, at Weintek's discretion. This warranty shall not cover any product which is
 - (a) Out of warranty period, which is 12 months from the manufacturing month of the HMI products.
 - (b) Damage caused by Force Majeure, accident, negligence, improper installation, or misuse.
 - (c) Product has been repaired or taken apart by unauthorized technicians.
 - (d) Products whose identification markings have been removed or damaged.

Frequently Asked Questions

button.*2. Confirm by pressing [yes] when prompted.*3. Note that all projects and data

stored in the unit will be cleared after resetting to factory default ” image-0=”” count=”1”
html=”true” css_class=””]

Documents / Resources

	WEINTEK MT8052iP Series HMI Touchscreen Panel [pdf] Installation Guide MT8052iP, MT8052iP Series HMI Touchscreen Panel, MT8052iP Series, HMI Touchscreen Panel, Touchscreen Panel, Panel
---	---

References

- [User Manual](#)

WEINTEK

HMI Touchscreen Panel, MT8052iP, MT8052iP Series, MT8052iP Series HMI Touchscreen Panel, Panel, Touchscreen Panel, WEINTEK

—

Leave a comment

Your email address will not be published. Required fields are marked *

Comment *

Name

Email

Website

☐ Save my name, email, and website in this browser for the next time I comment.

Post Comment

Search:

e.g. whirlpool wrf535swhz

Search

[Manuals+](#) | [Upload](#) | [Deep Search](#) | [Privacy Policy](#) | [@manuals.plus](#) | [YouTube](#)

This website is an independent publication and is neither affiliated with nor endorsed by any of the trademark owners. The "Bluetooth®" word mark and logos are registered trademarks owned by Bluetooth SIG, Inc. The "Wi-Fi®" word mark and logos are registered trademarks owned by the Wi-Fi Alliance. Any use of these marks on this website does not imply any affiliation with or endorsement.