

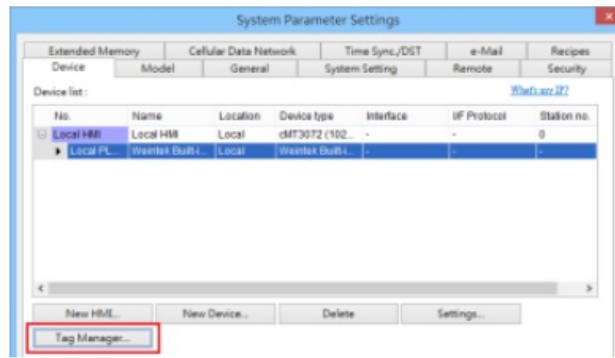
**PLC Connection Guide****Weintek Built-in CODESYS****Supported series: Weintek Built-in CODESYS HMI****Contents** [[hide](#)][1 HMI Setting:](#)[2 How to Import Tags:](#)[3 Support Device Type:](#)[4 Wiring Diagram:](#)[5 Documents / Resources](#)[5.1 References](#)**HMI Setting:**

Parameters	Recommended	Options	Notes
PLC type	Weintek Built-in CODESYS		
PLC I/F	Ethernet		

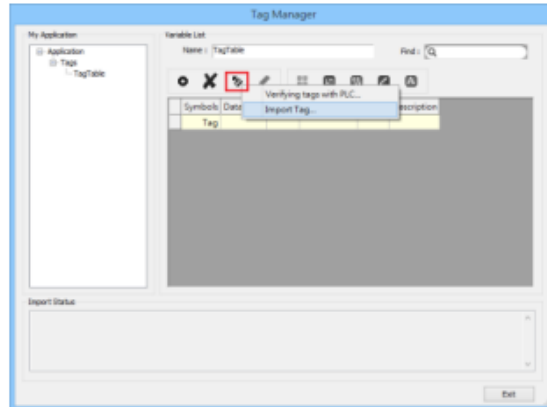
Online simulator	NO
-------------------------	----

How to Import Tags:

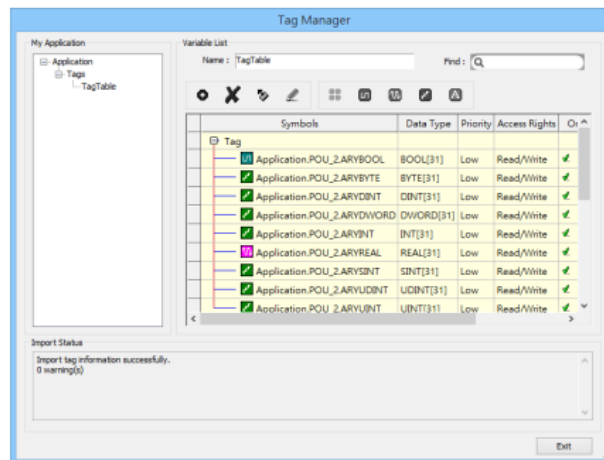
1. Under “MainTask” set POU PLC_PRG.



6. In Tag Manager click Get tag -> Import Tag, and then select the tag file (.xml) generated by the PLC software.



7. When the tags are imported successfully, click [Exit] to leave.



Support Device Type:

Data type	EasyBuilder data format	Memo
Bool	bit	
Byte	16-bit BCD, Hex, Binary, Unsigned	8-bit
SInt	16-bit BCD, Hex, Binary, Signed	8-bit
USInt	16-bit BCD, Hex, Binary, Unsigned	8-bit

Word	16-bit BCD, Hex, Binary, Unsigned	16-bit
Int	16-bit BCD, Hex, Binary, Signed	16-bit
UInt	16-bit BCD, Hex, Binary, Unsigned	16-bit
DWord	32-bit BCD, Hex, Binary, Unsigned	32-bit
DInt	32-bit BCD, Hex, Binary, Signed	32-bit
Real	32-bit Float	32-bit
UDInt	32-bit BCD, Hex, Binary, Unsigned	32-bit
LInt	64-bit Signed	64-bit
ULInt	64-bit Unsigned	64-bit
LWord	64-bit Unsigned	64-bit
LReal	64-bit Float	64-bit
String	Word array for ASCII input and display	Length=word

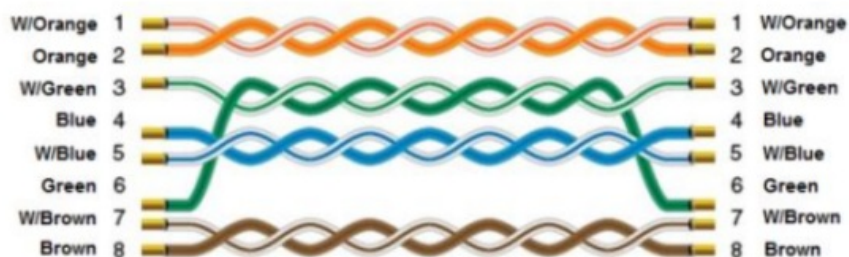
Note1: String length must be set identical to the length in Codesys software.

Note2: EBPro V6.03.02 or later supports 64 bits data type (cMT Series only), but please note that the address limit range is 48 bits in maximum.


Wiring Diagram:

Diagram 1

Ethernet cable:





Documents / Resources

	WEINTEK Built In CODESYS HMI [pdf] User Guide Built In CODESYS HMI, Built In, CODESYS HMI, HMI
---	---

References

- [User Manual](#)

 WEINTEK  Built In CODESYS HMI, Built-in, CODESYS HMI, HMI,

Leave a comment

Your email address will not be published. Required fields are marked *

Comment *

Name

Email

Website

☐ Save my name, email, and website in this browser for the next time I comment.

Post Comment

Search:

e.g. whirlpool wrf535swhz

Search

[Manuals+](#) | [Upload](#) | [Deep Search](#) | [Privacy Policy](#) | [@manuals.plus](#) | [YouTube](#)

This website is an independent publication and is neither affiliated with nor endorsed by any of the trademark owners. The "Bluetooth®" word mark and logos are registered trademarks owned by Bluetooth SIG, Inc. The "Wi-Fi®" word mark and logos are registered trademarks owned by the Wi-Fi Alliance. Any use of these marks on this website does not imply any affiliation with or endorsement.