

**WEIJIE**  
**V1 Smart Projector**



## Weijie V1 Smart Projector User Manual

[Home](#) » [Weijie](#) » Weijie V1 Smart Projector User Manual 

### Contents

- [1 Weijie V1 Smart Projector](#)
- [2 Product Usage Instructions](#)
- [3 Packaging coverage](#)
- [4 Product Description](#)
- [5 Quick installation](#)
- [6 Projector connection and input source](#)
- [7 Product specifications](#)
- [8 System interface](#)
- [9 Troubleshooting Guide](#)
- [10 FAQ](#)
- [11 Documents / Resources](#)
  - [11.1 References](#)
- [12 Related Posts](#)

**WEIJIE**

**Weijie V1 Smart Projector**



## Product Specifications

- **Power Supply:** Standard VA adapter
- **Power Outlet:** Grounding protection required
- **Battery:** Built-in, rechargeable
- **Waterproof:** Not waterproof

## Product Usage Instructions

- **Warm Reminder**

Before using the smart projector, read the manual carefully. Use a standard VA adapter and ensure a stable power supply with grounding protection. Avoid looking directly at the projector lens while in operation to prevent eye damage.

- **Battery Usage**

If the projector has a battery, plug in the DC adapter or an external power source when the low battery reminder is displayed. Avoid using the projector until the battery is completely drained to preserve its lifespan.

- **Water and Moisture Protection**

Avoid water splashing or spraying on the projector as it is not waterproof. Do not place liquids near the projector to prevent electrical hazards. Store the device away from high-humidity environments to prevent fogging on the lens.

- **Transportation and Maintenance**

During transportation, use the original foam packaging to protect the projector. Do not attempt to open or dismantle the machine yourself to avoid voiding the warranty. If damaged, contact the retailer for assistance.

- **Product Description**

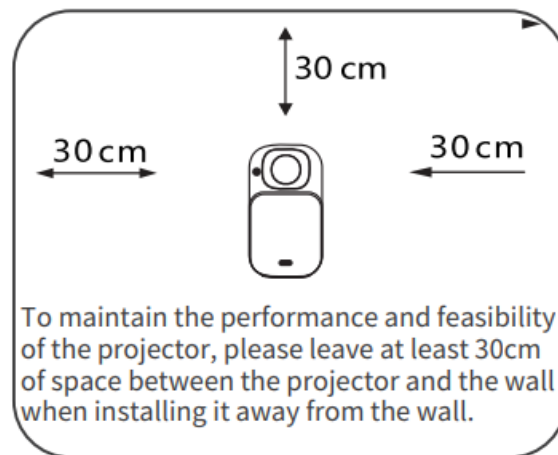
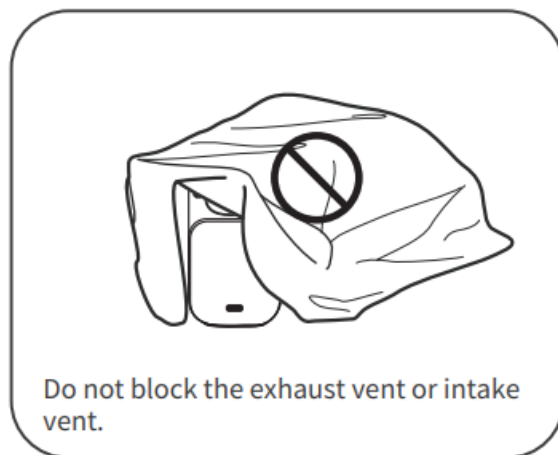
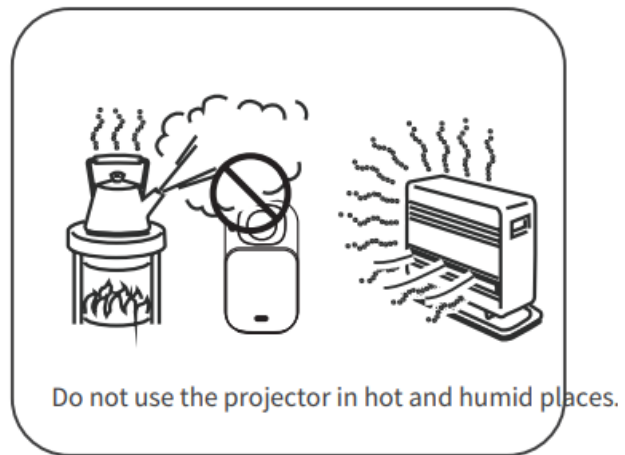
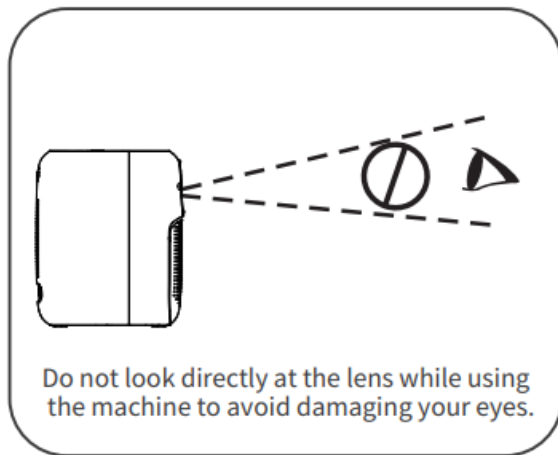
Do not place the projector upside down on a table to prevent accidental power button presses that may deplete the internal battery.

**Disclaimer:** The company reserves the right to modify the contents of this manual without prior notice.

**Note:** This manual covers all versions of functions. Please refer to the corresponding function introduction for the version you purchased. The product will continue to undergo software optimization, which may result in some differences between the OSD operation interface and the images in the manual. However, this does not affect the normal implementation of the functions described in the manual. We apologize for any inconvenience this may cause and regret to inform you that changes in the interface and some functions may result in operational changes without further notice.

### **Warm reminder**

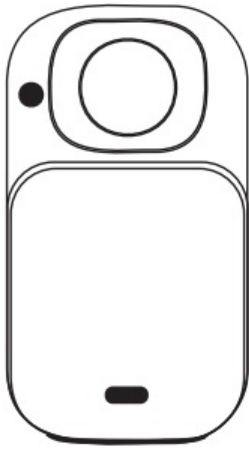
- Before using this machine, please read this manual carefully.
- To ensure a stable power supply for this machine, please use the standard 19V3A adapter and connect it to a power outlet with grounding protection.
- Do not look directly at the projector lens while the projector is in operation. The light from the projector lamp is bright and can be dazzling. Prolonged direct exposure to the lamp can cause eye damage, leading to symptoms such as temporary vision impairment or dizziness. It is harmful to the eyes.
- When this product is equipped with a battery (when the low battery reminder is displayed, please promptly plug in the DC adapter or an external power source for charging. Do not use the projector until the battery is completely drained to avoid damage to the machine and battery, which may affect the battery's lifespan).
- This product is not waterproof, and there is standby voltage and current even when turned off. Avoid water splashing or spraying, and do not place items containing liquids such as vases or cups next to the product to prevent electrical hazards.
- To prevent electric shock, do not expose the machine to rain or allow water to enter it. Any water solution containing acidic, alkaline, or salt substances can cause electric shock.
- When the device is stored in a high-humidity environment, fogging on the lens may occur when the screen is turned on (resulting in a blurry projection image). The fogging should clear up on its own after approximately 20 minutes of operation.
- If the product is not used for an extended period, please unplug the power cord.
- When transporting the product, please use the original foam packaging.
- Do not open or dismantle the machine by yourself. Otherwise, the company will not provide free warranty service.
- If you find that the product is damaged, do not attempt to repair it yourself. Please contact the retailer.
- This projector has a built-in battery. Do not place the machine upside down on the table to avoid pressing the power button, which may result in the device automatically turning on and depleting the internal battery



#### Do not:

- Do not block the slots and openings on the device used for ventilation.
- Do not use cleaning agents, paraffin, or solvents to wipe the device.
- **Do not use under the following conditions:**
  1. Do not use under in the Extreme hot, cold, or humid environments.
  2. Do not use under in the areas prone to heavy dust and dirt accumulation.
  3. Do not use it near any equipment generating strong magnetic fields.
  4. Do not use under sunlight exposure.
- **The product is designed for safe use under non-tropical climate conditions.**
  - Ensure the indoor ambient temperature is between 5-40°C.
  - Relative humidity is 80% maximum at 5-40°C, non-condensing.

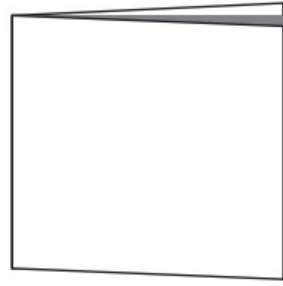
#### Packaging coverage



projector



remote control  
(battery not included)

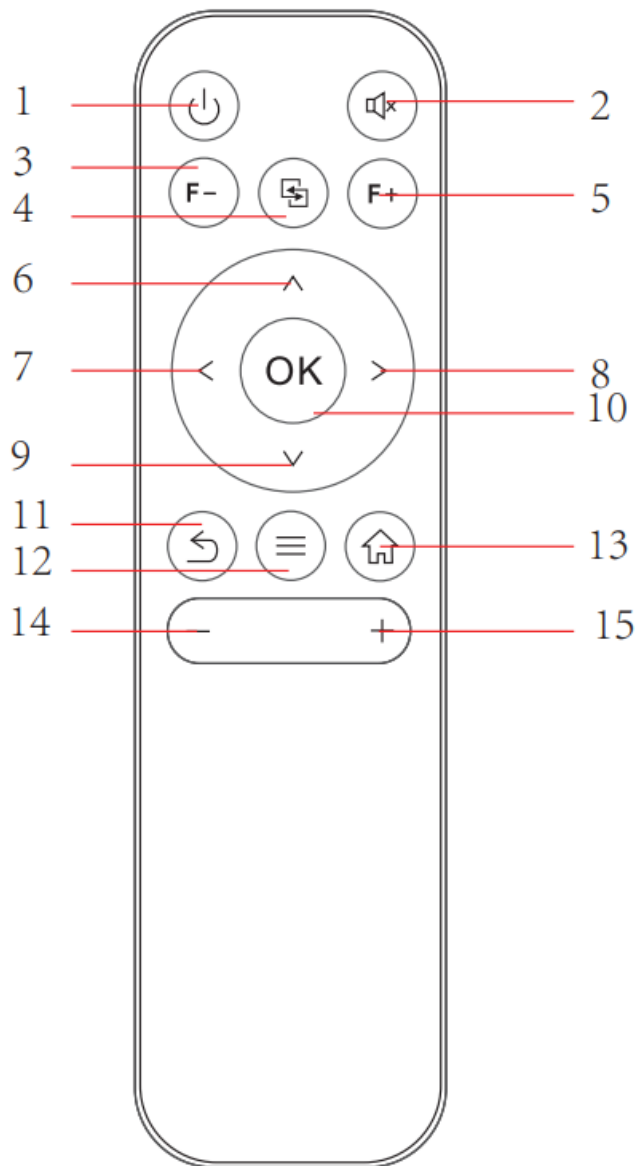


manual



DC adapter

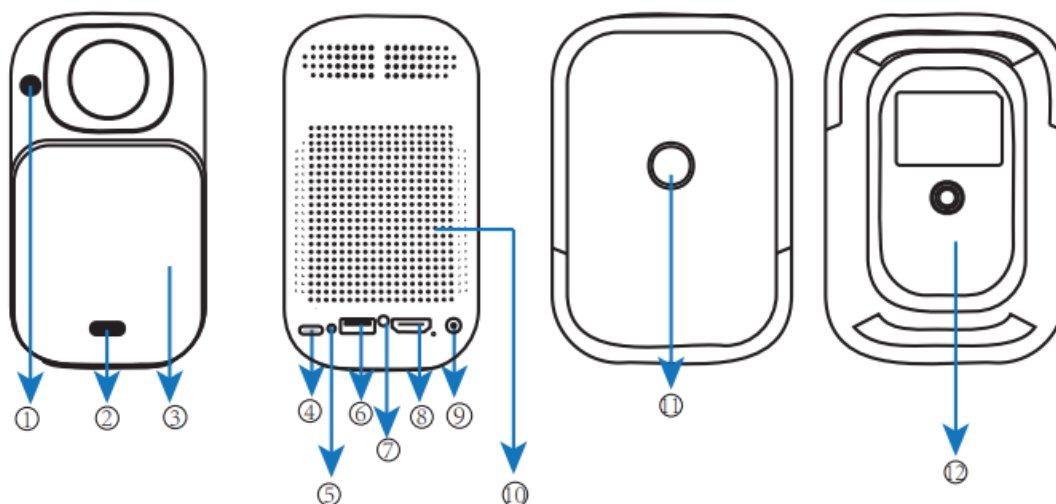
**\*Infrared remote control**



- 1. Power button
- 2. Mute

3. Focus-
4. Source
5. Focus+
6. Up
7. Left
8. Right
9. Down
10. OK
11. Back
12. Menu
13. Home
14. Volume-
15. Volume+

## Product Description

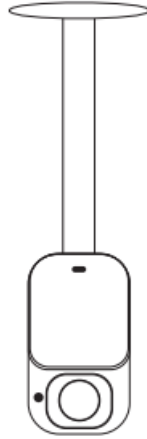


1. Decorative lens
2. Front infrared receiver
3. Exhaust vent
4. Type-C port (Only supports chargers or power banks that follow the Type-C port 20V fast charging protocol)
5. Indicator light (Red light when charging, green light when fully charged)
6. USB port
7. Rear infrared receiver
8. HDMI input
9. 19V DC input
10. Intake vent
11. Power button (\*Press and hold for 5-6 seconds to power on \*Press twice to power off)
12. Bracket screw hole

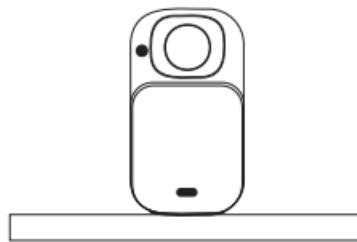
This product's Type-C fast charging input port is sold without a power adapter. The manual states that consumers should purchase a compatible power adapter that is CCC-certified and meets the standard requirements for use.

## Quick installation

### 1. **Ceiling:** Installation on the ceiling



### 2. **Desktop:** Installation in a horizontal position



### 3. **Bracket:** Installation with a movable bracket



**\*Note:** Regardless of which installation option you choose, please ensure:

1. It is recommended that the projector be positioned at the central location directly in front of the wall/screen.
2. Press the [Flip] button on the remote control to set the corresponding projection mode for correct image projection.

## Projector connection and input source

- Connect your device correctly to the projector, then press the source button on the remote control to access the function page below and select the correct input source, or directly select the correct input source on the homepage.

- Power-on warning: For electrical safety and equipment protection, ensure that the power from any external devices is completely disconnected before turning on the power.
- If your device is the built-in battery version, there is a certain amount of battery power remaining before leaving the factory. Press the power button to turn on the device. During the power-on process, the charging status indicator light will be red, and it will turn green when fully charged.

## Product specifications

Display Technology	Fully sealed optical engine(LCD
Light Source	LED
Resolution	720p, supports 1080P decoding
Input Signal	576i, 576P, 720i, 720P, 1080i, 1080P
Installation Method	Desktop front/rear projection, ceiling front/rear projection
Focus	Electronic focus adjustment
Keystone Correction	Motorized vertical and horizontal keystone correction
Aspect Ratio	16:9/4:3
Input Interfaces	DC in/USB/HDMI/TYPE-C
Power Specifications	19V/3A
Speaker	3W/40*1 speaker
Product Dimensions	9.5×13.5×17cm
Product Weight	900g/1100g (with built-in battery)

## System interface

### Introduction to the main interface

Press and hold the power button for 5-6 seconds to power on. After the startup logo is displayed, it will enter the main interface.



1. **Source:** Open to select and switch HDMI, USB playback input sources.



2. **Media**: Click to open and view the content of external storage (USB flash drive or hard drive), for video, music, picture, and e-book/document playback.
3. **WiFi**: Click to open the WiFi settings interface for wireless network connection.
4. **Setting**: Click to open the system settings interface.
5. **Wired screen**: Click to open the wired screen mirroring connection interface.
6. **Wireless screen**: Click to open the wireless screen mirroring connection interface.
7. **Real-time** display of time and date.
8. **Icons** displaying USB drive, Bluetooth, and WiFi connection status.
9. **Battery icon display**: Shows real-time battery level.

## Local playback

1. Connect a USB flash drive or USB hard drive to the projector's USB port, then use the remote control to select the main interface – [Media] icon, to play local videos, music, pictures, and e-books/documents.
2. When selecting the corresponding file, press the OK button to play, and press the back button to exit the playback interface.

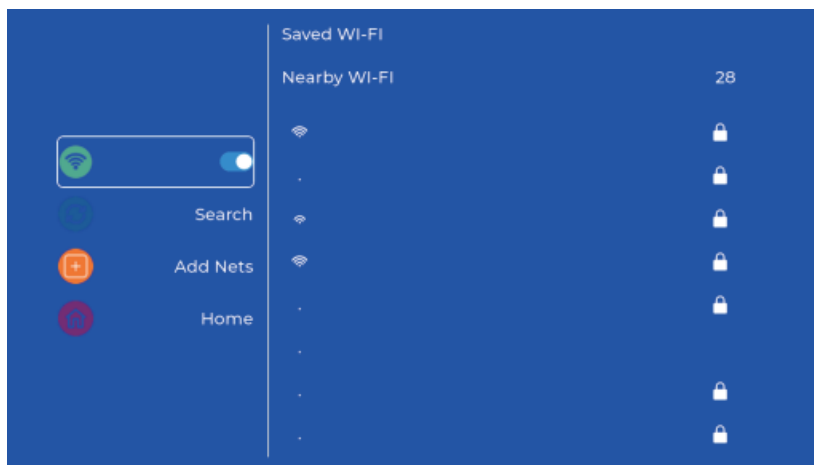
**The supported formats for local playback are as follows:**

Video file	MPEG/FLV/AVI/mp4/MOV/MKV/ts/m4v/
	rmvb/3gp/vob
Video resolution	480P/576P/720P/1080
Audio file	MP2/MP3/M4R/WAV/OGG/APE/AAC/FLAC
Image file	JPEG/BMP/PNG/GIF
Text file	TXT

\* The capacity of the external storage device (USB flash drive/hard drive) inserted should be less than 1TB

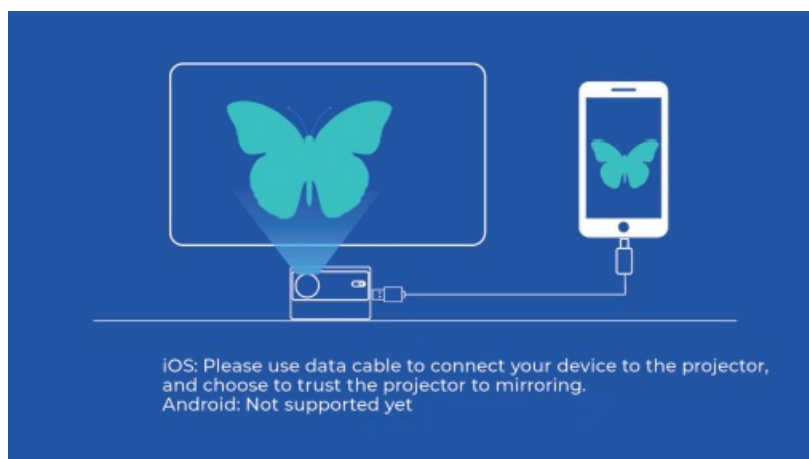
## Network settings

1. Select "Wi-Fi" on the main interface, and press the OK button to enter the WiFi settings interface.
2. Choose the desired Wi-Fi network to connect to, a password prompt will appear. Enter the corresponding wireless network password, then confirm to establish the connection. Press the back button to exit the network settings.



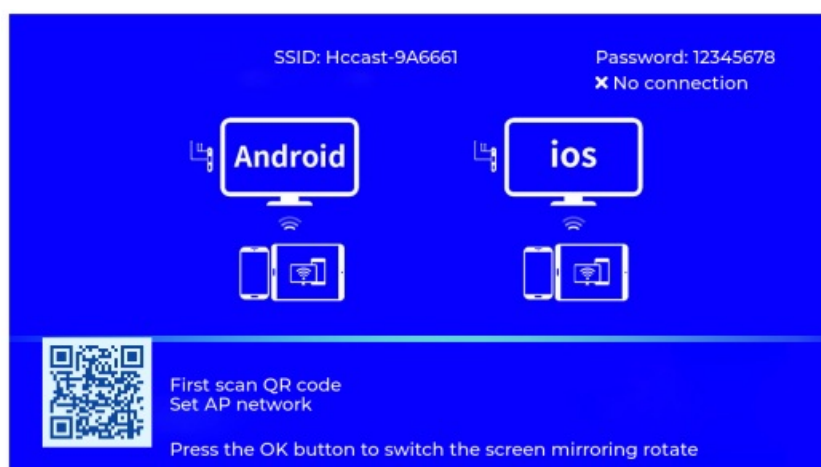
## Application instructions

**Wired Screen:** Select “Wired Screen” on the main interface to open the wired screen mirroring interface. Follow the on-screen instructions, use a phone charging cable to connect to the projector, and synchronize the phone screen content for projection. \*Requires a charging cable that supports data transfer.



## Wireless Screen

Select “Wireless Screen” on the main interface to open the wireless screen mirroring interface. Follow the on-screen instructions, connect your phone to the projector, and synchronize the phone screen content for projection.



\*Both the phone and the projector need to be connected to the same wireless network.

## HDMI Input Source Setting

Connect one end of the HDMI cable to a computer, DVD player, or other device, and the other end to the HDMI

port of the projector. Power on the system, press the source key on the remote control or navigate to the main interface and select “Source” to switch to HDMI input mode.



\* The interface options shown in the picture are used to connect devices with HDMI output ports, such as computers, DVD players, etc

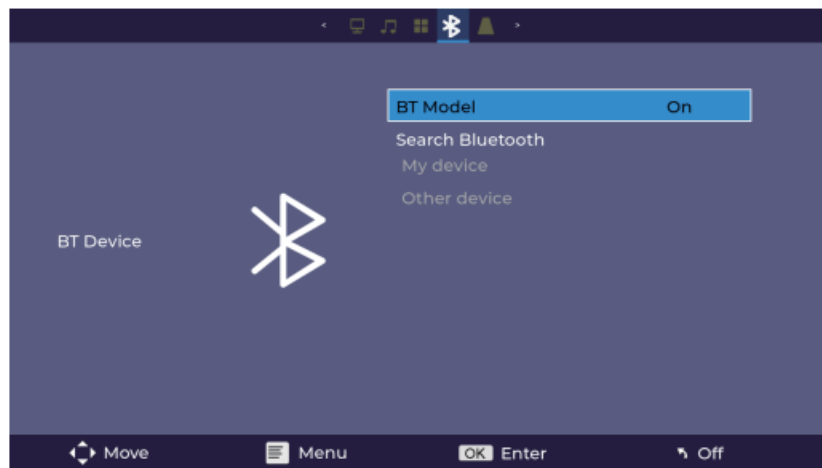
## System Settings

**Setting Menu** – Power on to enter the main system interface, use the directional keys on the remote control to select “Settings,” or press the menu key on the remote control to enter the settings menu:



## Bluetooth Settings

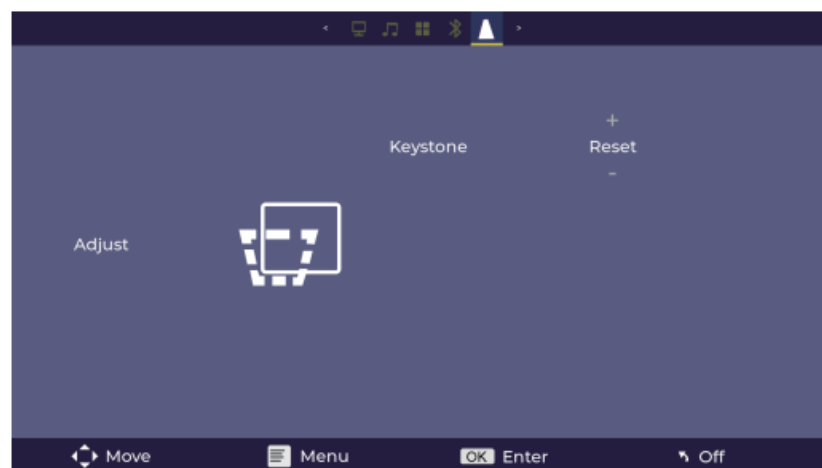
1. On the main interface, select “Settings” – “BT Model” – “On.” Use the remote control to select the desired pairing device from the available device list.
2. **Bluetooth Operation Mode:** One-way transmission mode, similar to the role of a mobile phone. Transmit music to Bluetooth speakers and headphones for playback, compatible with devices below Bluetooth 5.0 for connection.



**\*Note:** The Bluetooth speaker being connected must be kept in Bluetooth mode.

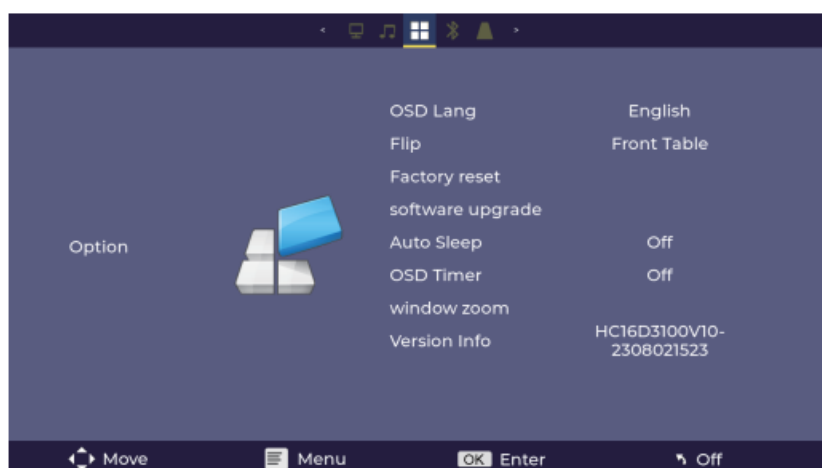
### Manual Keystone Correction

On the main interface, select “Settings” – “Keystone.” Use the remote control to select “+/-” to adjust the vertical keystone, press the OK button to save and exit, and press “Reset” to reset the keystone parameters.



### Projection Mode Setting

1. On the main interface, select “Settings” – “Flip” and press OK to switch the projection mode.
2. The projection modes supported include front projection, rear projection, ceiling front projection, and ceiling rear projection.

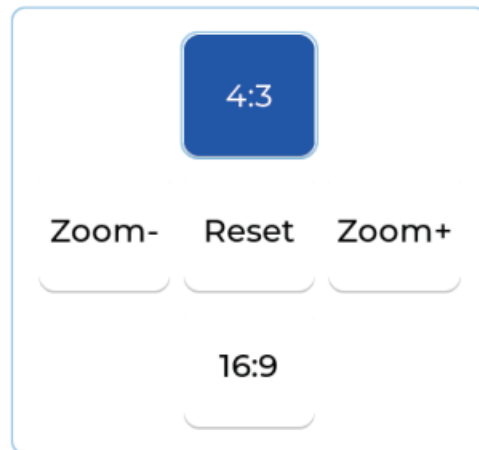


## Language Setting

On the main interface, select “Settings” – “OSD Lang” and press OK to enter the language setting interface.

## Screen Zoom

1. On the main interface, select “Settings” – “Windowzoom” and press OK to enter the screen zoom setting interface.
2. Use the remote control to select screen zoom ratios of 16:9, 4:3, and enable global zoom functionality.



## Factory Reset

On the main interface, select “Settings” – “Factory reset” and press OK to restore the device to its factory settings.

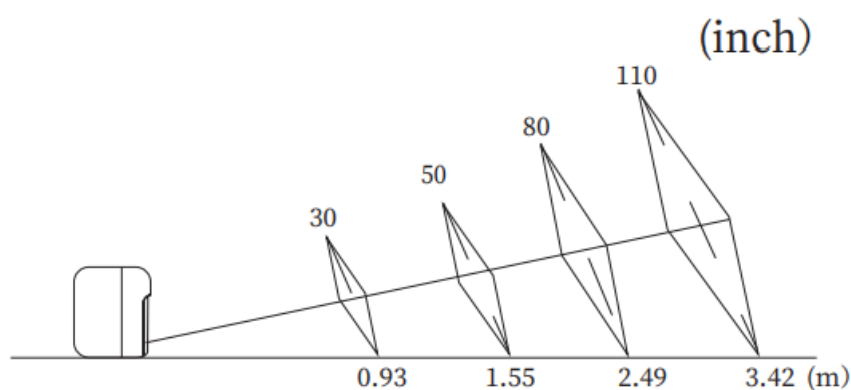
\*After performing a factory reset, the device will clear WiFi/Bluetooth information and adjusted settings. Please proceed with caution.

## Projection distance and size

**Note:** There may be discrepancies between measured data and actual results; provided for reference only.

### Recommendations:

1. Projection distance varies with different projection content. Please adjust the distance between the screen and the projector as needed.
2. A dark projection environment will enhance the clarity of the projected image and is also influenced by the intensity of light reflected by the projected object. Projection distance and corresponding display size:



## Troubleshooting Guide

- **If the projector is turned on and the image is blurry within a certain distance, what should you do?**
  - Use the remote control to adjust the focus. Press the F- or F+ buttons on the remote control to adjust the clarity.
  - The projector and the screen/wall must be within the specified distance range.
- **Remote control is unresponsive for remote control operation?**
  - Ensure that the remote control is directly pointing at the infrared receiver, located between the USB/HDMI ports on the back of the machine and the front receiving window.
  - Avoid any obstacles blocking or covering the infrared receiver.
  - Try installing a pair of new AAA batteries in the remote control battery compartment.
- **USB mobile storage device is not being read?**
  - Ensure that the USB device is formatted in NTFS or FAT32 format. If not, format the USB mobile storage device on a computer, selecting NTFS or FAT32 format.
  - Try using a brand-new USB mobile storage device.



**Caution:**

Do not look directly at the lens to avoid eye injury!!!

This device complies with part 15 of the FCC Rules. Operation is subject to the following two conditions:

1. This device may not cause harmful interference, and
2. this device must accept any interference received, including interference that may cause undesired operation.

Any Changes or modifications not expressly approved by the party responsible for compliance could void the user's authority to operate the equipment.

**Note:** This equipment has been tested and found to comply with the limits for a Class B digital device, pursuant to part 15 of the FCC Rules. These limits are designed to provide reasonable protection against harmful interference in a residential installation. This equipment generates uses and can radiate radio frequency energy and, if not installed and used in accordance with the instructions, may cause harmful interference to radio communications. However, there is no guarantee that interference will not occur in a particular installation. If this equipment does cause harmful interference to radio or television reception, which can be determined by turning the equipment off and on, the user is encouraged to try to correct the interference by one or more of the following measures:

- Reorient or relocate the receiving antenna.
- Increase the separation between the equipment and receiver.
- Connect the equipment into an outlet on a circuit different from that to which the receiver is connected.
- Consult the dealer or an experienced radio/TV technician for help.

This equipment complies with FCC radiation exposure limits set forth for an uncontrolled environment. This equipment should be installed and operated with minimum distance 20cm between the radiator & your body.

**FAQ**


**Q: Can I use the projector in hot and humid environments?**

A: It is not recommended to use the projector in hot and humid places as it may affect its performance.

**Q: What should I do if I find the product damaged?**

A: Do not attempt to repair it yourself. Contact the retailer for assistance.

**Documents / Resources**

	<p><a href="#">Weijie V1 Smart Projector</a> [pdf] User Manual 2BKP3-V1, 2BKP3V1, V1 Smart Projector, V1, Smart Projector, Projector</p>
---	--

**References**

- [User Manual](#)

**Manuals+. Privacy Policy**

This website is an independent publication and is neither affiliated with nor endorsed by any of the trademark owners. The "Bluetooth®" word mark and logos are registered trademarks owned by Bluetooth SIG, Inc. The "Wi-Fi®" word mark and logos are registered trademarks owned by the Wi-Fi Alliance. Any use of these marks on this website does not imply any affiliation with or endorsement.