



**Contents** [ [hide](#) ]

- [1 Weightman LCD Display Reloading Scale](#)
- [2 INTRODUCTION](#)
- [3 SPECIFICATIONS](#)
- [4 WHAT'S IN THE BOX](#)
- [5 FEATURES](#)
- [6 SETUP GUIDE](#)
- [7 CARE & MAINTENANCE](#)
- [8 TROUBLESHOOTING](#)
- [9 PROS & CONS](#)
- [10 WARRANTY](#)
- [11 FREQUENTLY ASKED QUESTIONS](#)
- [12 References](#)



## Weightman LCD Display Reloading Scale

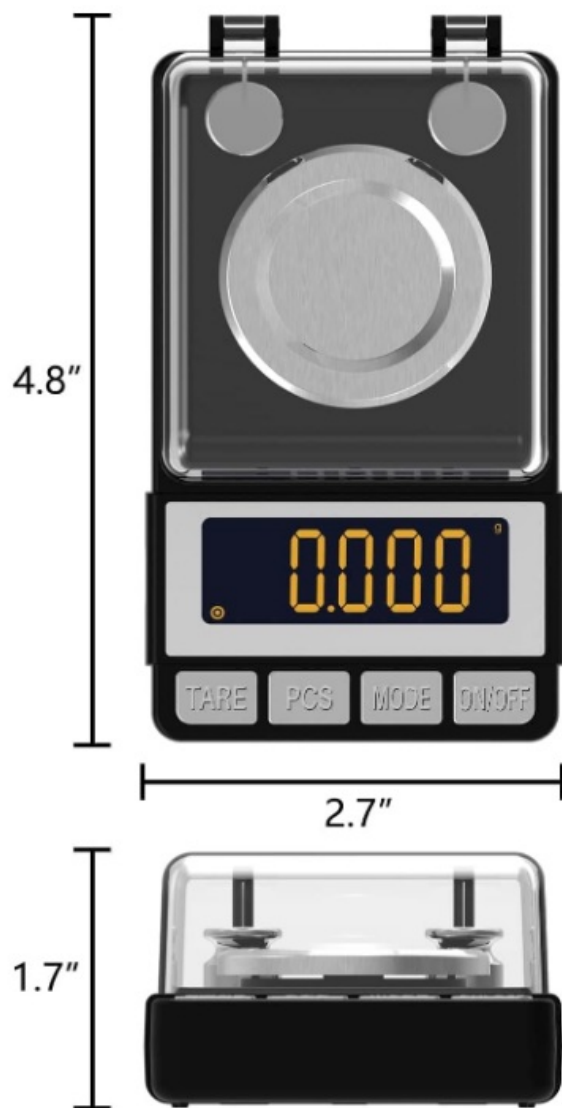


## INTRODUCTION

A high-precision milligram scale made for people who want extraordinary measurement accuracy is the Weightman LCD Display Reloading Scale. With a maximum capacity of 50 grams and a reading of 0.001g, this model offers professional-grade precision and is manufactured by WEIGHTMAN, a name well-known for its dependable and portable scales. At **\$17.99**, it is a cost-effective yet effective solution for reloaders, jewellers, hobbyists, and pharmacists who need precise results every time. With six distinct weighing units (g, oz, ozt, dwt, ct, and gn), a big backlit LCD display for easy readability, and a dust cap to preserve performance by minimising outside interference, this scale was introduced with simplicity and adaptability in mind. It is a full, ready-to-use package that is small and portable and includes weighing trays, spoons, and calibration weights. The Weightman LCD Reloading Scale guarantees precision, dependability, and user-friendliness whether you're measuring gold, jewels, powder, or medication.

## SPECIFICATIONS

<b>TITLE</b>	Weightman LCD Display Reloading Scale
<b>Brand</b>	WEIGHTMAN
<b>Color</b>	Black
<b>Price</b>	\$17.99
<b>Display Type</b>	LCD with Backlight
<b>Capacity / Weight Limit</b>	50g
<b>Accuracy / Resolution</b>	0.001g
<b>Units of Measure</b>	g, oz, ozt, dwt, ct, gn (6 modes)
<b>Dimensions &amp; Weight</b>	4.8 x 2.7 x 1.7 inches; ~6.1 oz
<b>Special Features</b>	Auto Shut Off, Backlit Display, Tare Function, PCS Counting Function
<b>Functions</b>	Calibration with included 20g weight, Tare, PCS (piece counting)
<b>Included Accessories</b>	2x20g calibration weights, 2 trays, 2 spoons, batteries, dust cap
<b>Design</b>	Compact, portable, protective dust cap for accuracy
<b>Recommended Uses</b>	Jewelry, gold, powder, medicine, gems, reloading, supplements, herbs
<b>Manufacturer</b>	WEIGHTMAN
<b>UPC</b>	793811639100



**Easy to Carry**



## WHAT'S IN THE BOX

- Reloading Scale
- User Manual

## FEATURES

- **Precision:** Measures up to 50g with 0.001g accuracy for highly detailed weighing.
- **Multiple Units:** Supports g, oz, ozt, dwt, ct, and gn for versatile use.

## 6 Units Conversion



- **Backlit Display:** Clear LCD screen ensures easy reading in any lighting.



- **Dust Protection:** Comes with a dust cover to prevent interference with accuracy.
- **Calibration:** Includes a 20g calibration weight to maintain accurate readings.

## HOW TO CALIBRATION?



Step 1.  
Turn on the scale



Step 2.  
Press "MODE" key for 6+ seconds,  
until the display starts to flash 20.000,  
Place 20g calibration weight on platform



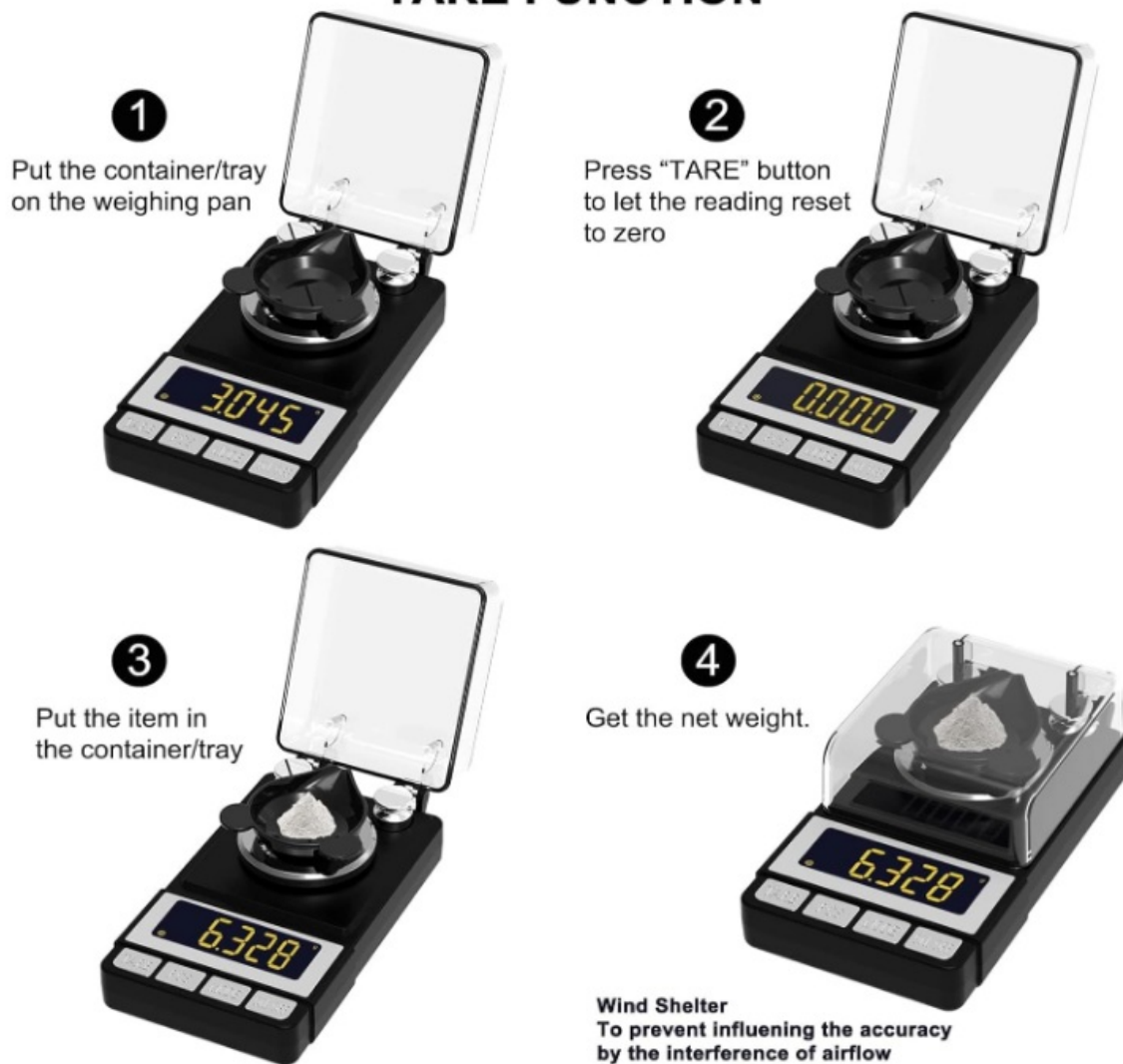
Step 3.  
The display starts to flash 40.000,  
Place another 20g calibration weight on platform



Step 4.  
"PASS" shows on screen,  
then remove the calibration  
weight from the platform

- **Tare Function:** Allows you to measure net weight by subtracting container weight.

## TARE FUNCTION



- **Piece Counting:** Counts multiple small items quickly and efficiently.
- **Portable Size:** Compact dimensions of 4.52" x 3.46" x 1.57" for easy transport.
- **Lightweight:** Weighs just 6.1 ounces, making it convenient to carry.
- **Included Accessories:** Comes with 2 trays, 2 measuring spoons, and batteries.
- **Auto Shut-Off:** Powers down automatically to save battery life.
- **Durable Build:** Constructed from strong materials to ensure long-term use.
- **Stable Readings:** Provides accurate results even for small powders or jewelry.
- **Wide Applications:** Ideal for reloading powder, jewelry, coins, and medicine.
- **User-Friendly:** Simple controls make it easy for beginners and experts alike.

## SETUP GUIDE

- **Unbox:** Carefully remove the scale and accessories from the package.
- **Insert Battery:** Place the included batteries in the compartment.
- **Place on Flat Surface:** Ensure the scale is on a level, stable area.

- **Attach Dust Cap:** Use the dust cap to prevent dirt from affecting measurements.
- **Turn On:** Press the power button to activate the scale.
- **Check Zero:** Wait until the display shows “0.000” before weighing.
- **Select Unit:** Press the mode button to choose your desired measurement unit.
- **Calibrate if Needed:** Use the included 20g weight to ensure accuracy.
- **Add Tray or Spoon:** Place a tray or spoon if measuring powders or small items.
- **Tare Function:** Press tare to reset the display after adding a container.
- **Place Item Carefully:** Put the object in the center of the weighing tray.
- **Read Measurement:** Check the LCD for the exact weight.
- **Use Piece Counting:** Activate PCS function for counting multiple small items.
- **Avoid Overloading:** Do not exceed 50g to prevent damage.
- **Turn Off/Store:** Switch off manually or let auto shut-off save power; store safely.

## CARE & MAINTENANCE

- **Clean Regularly:** Wipe the tray and scale with a dry cloth after use.
- **Avoid Water:** Do not immerse the scale or expose it to moisture.
- **Use Dust Cover:** Keep the scale covered when not in use.
- **Handle Carefully:** Avoid dropping or pressing hard on the scale.
- **Calibrate Often:** Recalibrate with the included weight for consistent accuracy.
- **Replace Batteries:** Change batteries when the screen dims or shows low power.
- **Flat Surface:** Always use on stable, level surfaces for correct readings.
- **Protect From Heat:** Keep away from direct sunlight or heat sources.
- **Avoid Chemicals:** Do not use abrasive cleaners or harsh chemicals.
- **Do Not Overload:** Stay within the 50g capacity for safety and accuracy.
- **Check for Damage:** Inspect trays, buttons, and casing before use.
- **Store Properly:** Keep in a clean, dry area to prevent dust or moisture damage.
- **Use Included Accessories:** Only use the supplied trays and spoons.
- **Prevent Vibration:** Avoid using the scale on unstable or moving surfaces.

## TROUBLESHOOTING

Issue	Possible Cause	Solution
-------	----------------	----------

Issue	Possible Cause	Solution
Scale not powering on	Batteries not installed correctly or drained	Reinsert or replace batteries
The display shows unstable readings	Scale placed on an uneven surface	Place on a stable, flat surface
Inaccurate results	Scale not calibrated	Recalibrate using the included 20g weight
“Err” message displayed	The weight exceeds 50g capacity	Remove excess load
LCD flickers or dims	Low battery power	Replace with fresh batteries
Tare not functioning	The button not pressed properly	Press and hold tare button until reset
Reading drifts over time	Environmental interference (wind, vibration)	Move scale to a stable, draft-free area
“Lo” appears on screen	Low battery warning	Install new batteries
Buttons unresponsive	Dust or debris under buttons	Clean gently with dry cloth
No reading despite power	Loose battery contacts	Adjust battery placement and ensure proper contact

## PROS & CONS

### Pros

- Ultra-precise with 0.001g readability.
- Comes with calibration weight and accessories.

- Backlit LCD display for clear reading.
- Compact and portable design.
- Multiple weighing units for flexibility.

## **Cons**

- Limited to 50g maximum capacity.
- Sensitive to environmental interference.
- Requires careful calibration for accuracy.
- The plastic body may feel less premium.
- A short auto-off timer may interrupt long use.

## **WARRANTY**

The Weightman LCD Display Reloading Scale is backed by a one-year limited warranty from the manufacturer. The warranty covers defects in materials and workmanship under normal use. It does not cover accidental damage, misuse, environmental interference, or normal wear and tear. To claim warranty service, customers must provide proof of purchase and contact the manufacturer directly.

## **FREQUENTLY ASKED QUESTIONS**

What is the maximum capacity of the WEIGHTMAN LCD Display Reloading Scale?

The WEIGHTMAN LCD Display Reloading Scale can measure up to 50 grams.

How precise is the WEIGHTMAN LCD Display Reloading Scale?

It has a readability of 0.001 g, making it highly accurate for jewelry, powders, and reloading.

What units of measurement does the WEIGHTMAN LCD Display Reloading Scale support?

It supports g, oz, ozt, dwt, ct, and gn, covering a wide range of applications.

Does the WEIGHTMAN LCD Display Reloading Scale include calibration weights?

It comes with two 20 g calibration weights for accuracy checks.

What functions are available on the WEIGHTMAN LCD Display Reloading Scale?

It includes tare, calibration, piece counting , and auto shut-off functions.

What type of display does the WEIGHTMAN LCD Display Reloading Scale use?

It has a large backlit LCD display for clear visibility.

What accessories come with the WEIGHTMAN LCD Display Reloading Scale?

It includes 2 weighing trays, 2 measuring spoons, batteries, and calibration weights.

## References

- [User Manual](#)

📎 B07XK1WJY1, LCD Display Reloading Scale, user manual,

📁 Weightman   Weightman

---

## Leave a comment

Your email address will not be published. Required fields are marked \*

Comment \*

Name

Email

Website

☐ Save my name, email, and website in this browser for the next time I comment.

Post Comment

Search:

e.g. whirlpool wrf535swhz

Search

Manuals+ | Upload | Deep Search | Privacy Policy | @manuals.plus | YouTube

This website is an independent publication and is neither affiliated with nor endorsed by any of the trademark owners. The "Bluetooth®" word mark and logos are registered trademarks owned by Bluetooth SIG, Inc. The "Wi-Fi®" word mark and logos are registered trademarks owned by the Wi-Fi Alliance. Any use of these marks on this website does not imply any affiliation with or endorsement.