

Contents [[hide](#)]

- [1 WEGMANN 591132 TPMS Car Universal Sensor](#)
- [2 Specifications](#)
- [3 INSTALL ATION](#)
- [4 Assemble the valve on the sensor](#)
- [5 Mount the tireGENERAL](#)
- [6 RADIATION EXPOSURE](#)
- [7 WARRANTY](#)
- [8 Documents / Resources](#)
 - [8.1 References](#)



WEGMANN 591132 TPMS Car Universal Sensor



Specifications

- Model: TPMS Sensor + Valve
- Frequency: 315/433 MHz
- Maximum Transmitting Power: <10mW
- Valve Types: Adjustable angle and Snap-in
- Manufacturer: WEGMANN Automotive USA Inc.

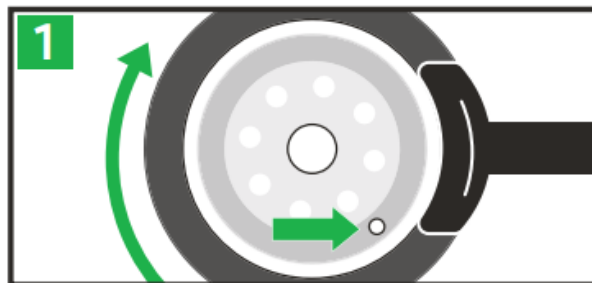
Note: TPMS units must be programmed before use.

TECHNICAL DATA

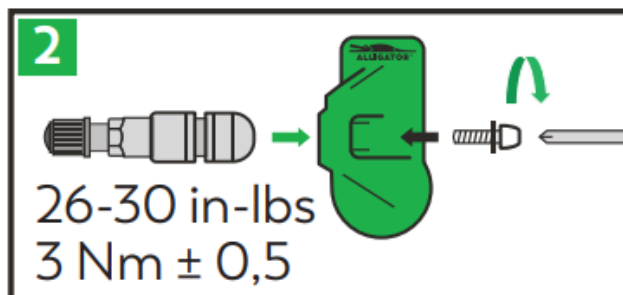
- Frequency: 433,92 MHz
- Maximum transmitting power: < 10 mW

INSTALLATION

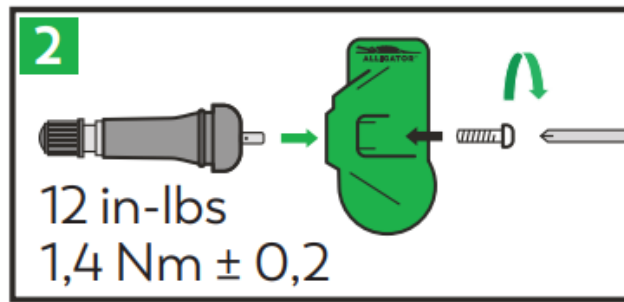
Dismount the tire



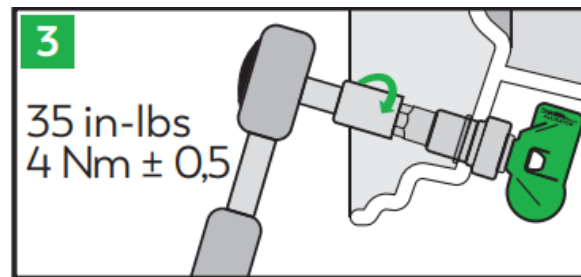
- (9-) 591132 (adjustable angle)



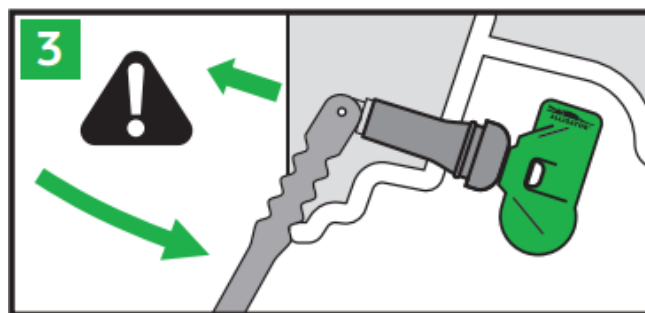
- (9-) 591134 (snap-in)



Assemble the valve on the sensor

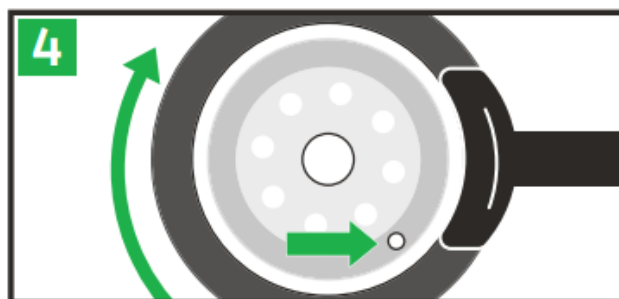


- (9-) 591132 (adjustable angle)



- (9-) 591134 (snap-in)

Mount the tire



GENERAL

- Read the installation instructions and safety information
- Before installing the sensor. For safety reasons and to ensure optimum function, we recommend that all maintenance and repair work be carried out only by trained specialists and according to the vehicle manufacturer's guidelines.
- Tire valves are only intended for installation by trained specialists.

WEGMANN automotive accepts no liability in the event of incorrect or improper installation of the product. Failure to observe the safety and installation instructions and Incorrect handling may result in the sensor only functioning to a limited extent, and may lead to accidents resulting in personal injury.

The sensor may only be installed using original valves, accessories, and installation tools from WEGMANN automotive to ensure optimum function. Do not use the sensor if it is damaged or has other visible faults. In this case, use a new sensor and contact your supplier's customer service.

For clamp-in valves, the seal must be replaced every time the tire is changed. Check whether the vehicle is fitted with original rims with a valve hole designed by ETRTO. If the factory-fitted condition can no longer be traced, it is strongly recommended that the screw-in valve solutions be used. The installation instructions for Overleaf must be observed during installation.

RADIATION EXPOSURE

This device complies with FCC/IC radiation exposure limits set forth for an uncontrolled environment and meets the FCC radio frequency (RF) Exposure Guidelines and RSS 102 of the IC radio frequency (RF) Exposure rules. The antenna should be installed and operated with a minimum distance of 20 cm between the radiator and your body. This transmitter must not be co-located or operating in conjunction with any other antenna or transmitter.

INTERFERENCE

This device complies with Part 15 of the FCC Rules and Industry Canada licence-exempt RSS standard(s).

Operation is subject to the following two conditions

1. this device may not cause interference, and
2. this device must accept any interference, including interference that may cause undesired operation of the device.

FORM NO: 18409 & 18410

Form provided in USA English and Canadian French. Questions can be sent to our Hotline.

GENERAL

Read the installation instructions and safety information before installing the sensor. For safety reasons and to ensure optimum function, we recommend that all maintenance and repair work be carried out only by trained specialists and according to the vehicle manufacturer's guidelines. Tire valves are only intended for installation by trained specialists.

WEGMANN automotive accepts no liability in the event of incorrect or improper installation of the product. Failure to observe the safety and installation instructions and incorrect handling may result in the sensor only functioning to a limited extent and may lead to accidents resulting in personal injury.

The sensor may only be installed using original valves, accessories, and installation tools from WEGMANN automotive to ensure optimum function. Do not use the sensor if it is damaged or has other visible faults. In this case, use a new sensor and contact your supplier's customer service. For clamp-in valves, the seal must be replaced every time the tire is changed. Check whether the vehicle is fitted with original rims with a valve hole designed by ETRTO. If the factory-fitted condition can no longer be traced, it is strongly recommended that the screw-in valve solutions be used. The installation instructions overleaf must be observed during installation.

WARRANTY

WEGMANN automotive guarantees for 24 months or 50,000 km (or 30,000 miles) that the sensor is free from defects in material or Workmanship, the first event, Workmanship taken into account. In the event of a warranty claim, WEGMANN Automotive will replace the defective component free of charge.

WEGMANN automotive will not replace parts that have been damaged by incorrect installation, misuse, or accidental damage. Damage caused by third parties is excluded from the warranty. In the event of a warranty claim, please return the defective sensor to

your supplier with a description of the fault. Sensor Clamp-in (metal valve) Max. 250 km/h, max. 8 bar (9-591132) Sensor Snap-in (rubber) Max. 210 km/h, max. 4,5 bar (9-591134)

RESTRICTION OF USE

The tire pressure monitoring system (TPMS), Alligator Sen.It RS+ works with sensors that transmit the tire pressure to the vehicle. The TPMS is therefore a radio system by 2014/53/EU. According to Article 10, Paragraph 1,0, 2014/53/EU, it is not permitted to use radio equipment on the 315 MHz frequency within the European Economic Area (EU as well as Iceland, Liechtenstein, and Norway (restriction of use).

By using the TPMS, the user agrees to this restriction of use and expressly agrees not to use the TPMS on the 315 MHz frequency within the EEA. The user acknowledges that a violation of these Terms of Use may violate applicable law and lead to legal consequences. WEGMANN automotive accepts no liability whatsoever for violations of this usage restriction on the part of the user. It is the sole responsibility of the user to ensure that the TPMS is only used by the applicable directives and other legal provisions.,

When operating the TPMS within the EEA, each programming device must be set to the „EU“ country region when setting up the sensor; this ensures that the 433 MHz frequency is used. The country region „USA“ is not allowed to be selected, as otherwise the frequency 315 MHz will be used.

SIMPLIFIED EU DECLARATION OF CONFORMITY

WEGMANN automotive hereby declares that the Alligator Sens.It Rs+/Wusu Sensit 87E radio system complies with Directive 2014/53/EU. The full text of the EU Declaration of Conformity is available at: www.alligator-alves.com. Select the region in question, navigate to the download area, where you will find the complete declaration of conformity under approvals.

DISPOSAL

At the end of its service life, dispose of the sensor according to the legal regulations for electronic and battery products. It must not be disposed of with residual waste. Please also observe waste separation for the packaging.

Alligator is a brand of WEGMANN automotive
WEGMANN automotive GmbH
Rudolf-Diesel-Straße 6
97209 Veitshöchheim
Germany


USA

WEGMANN Automotive USA Inc.
1715 Joe B Jackson Parkway
Murfreesboro, TN 37127, USA

EU

+49 321 04 0
WEGMANN automotive GmbH
Rudolf-Diesel-Straße 6
97209 Veitshöchheim, Germany

Documents / Resources

	WEGMANN 591132 TPMS Car Universal Sensor [pdf] Installation Guide 591132, 591134, 591132 TPMS Car Universal Sensor, 591132, TPMS Ca r Universal Sensor, Universal Sensor, Sensor
---	--

References

- [User Manual](#)

WEGMANN

591132, 591132 TPMS Car Universal Sensor, 591134, Sensor, TPMS Car Universal Sensor, Universal Sensor,
WEGMANN

Leave a comment

Your email address will not be published. Required fields are marked *

Comment *

Name

Email

Website

☐ Save my name, email, and website in this browser for the next time I comment.

Post Comment

Search:

e.g. whirlpool wrf535swhz

Search

[Manuals+](#) | [Upload](#) | [Deep Search](#) | [Privacy Policy](#) | [@manuals.plus](#) | [YouTube](#)

This website is an independent publication and is neither affiliated with nor endorsed by any of the trademark owners. The "Bluetooth®" word mark and logos are registered trademarks owned by Bluetooth SIG, Inc. The "Wi-Fi®" word mark and logos are registered trademarks owned by the Wi-Fi Alliance. Any use of these marks on this website does not imply any affiliation with or endorsement.