

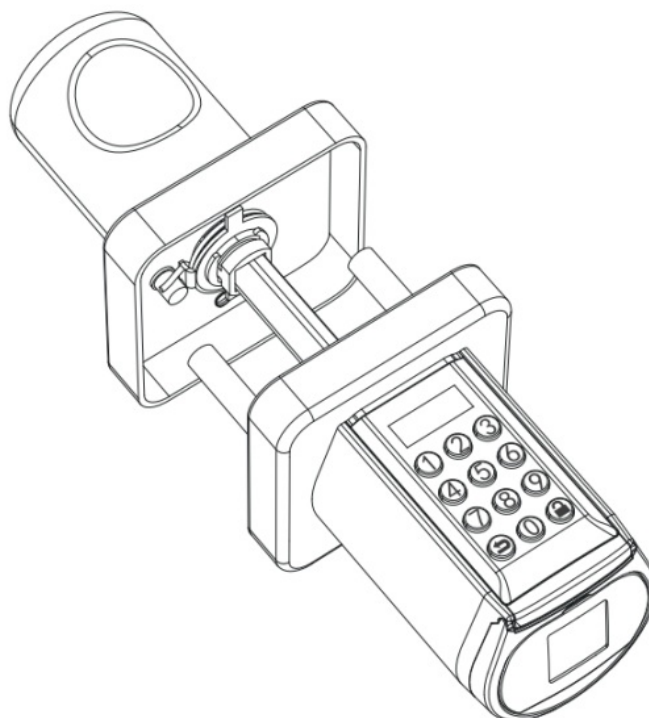


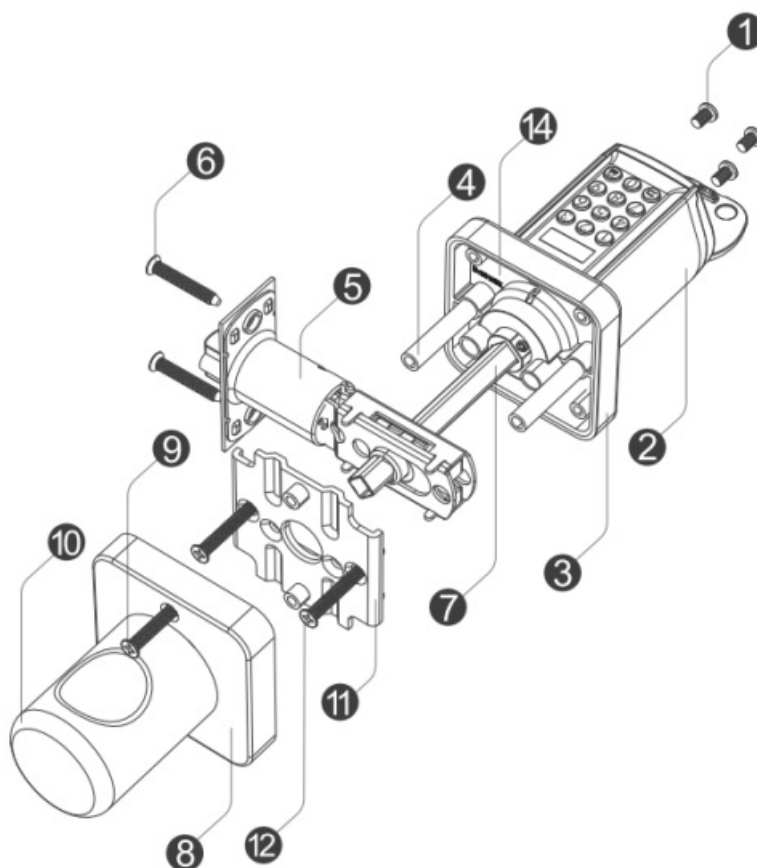
WE LOCK PCB10KEY32 Electronic Smart Lock Fingerprint Password Bluetooth Lock Instructions

[Home](#) » [WE LOCK](#) » WE LOCK PCB10KEY32 Electronic Smart Lock Fingerprint Password Bluetooth Lock Instructions 



PCB10KEY32 Instructions





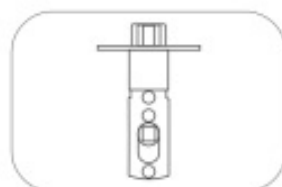
Contents

- [1 PART LIST FIGURE](#)
- [2 Accessories list \(TOOLBOX\)](#)
- [3 Install battery](#)
- [4 Operating instruction](#)
- [5 Unlock and lock](#)
- [6 Uresetting diagram](#)
- [7 Installation diagram](#)
- [8 Applicable size](#)
- [9 Product Introduction](#)
- [10 Bind the device](#)
- [11 FAQ](#)
- [12 FCC WARNING](#)
- [13 Documents / Resources](#)
- [14 Related Posts](#)

PART LIST FIGURE

1. Screws for battery compartment	8. Rear Panel
2. Front Handle	9. Screws for rear
3. Front Panel	10. Panel
4. Screw casing	11. Rear handle
5. Lockbody	12. Mounting bracket
6. Screws for lock body	13. Mounting bracket screw
7. Toggle lever	14. Product ID

Accessories list (TOOLBOX)



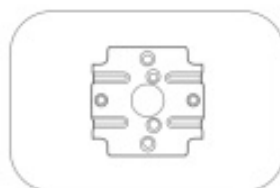
Single latch lock body*1



Gusset*1



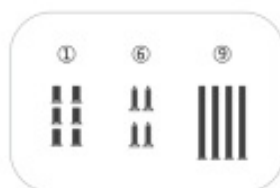
Stickers*2
(Used to cover the door hole)



Mounting bracket*1



KEY*2



Fixing screw*14



Philips screwdriver & Thimble



RFID Card*3

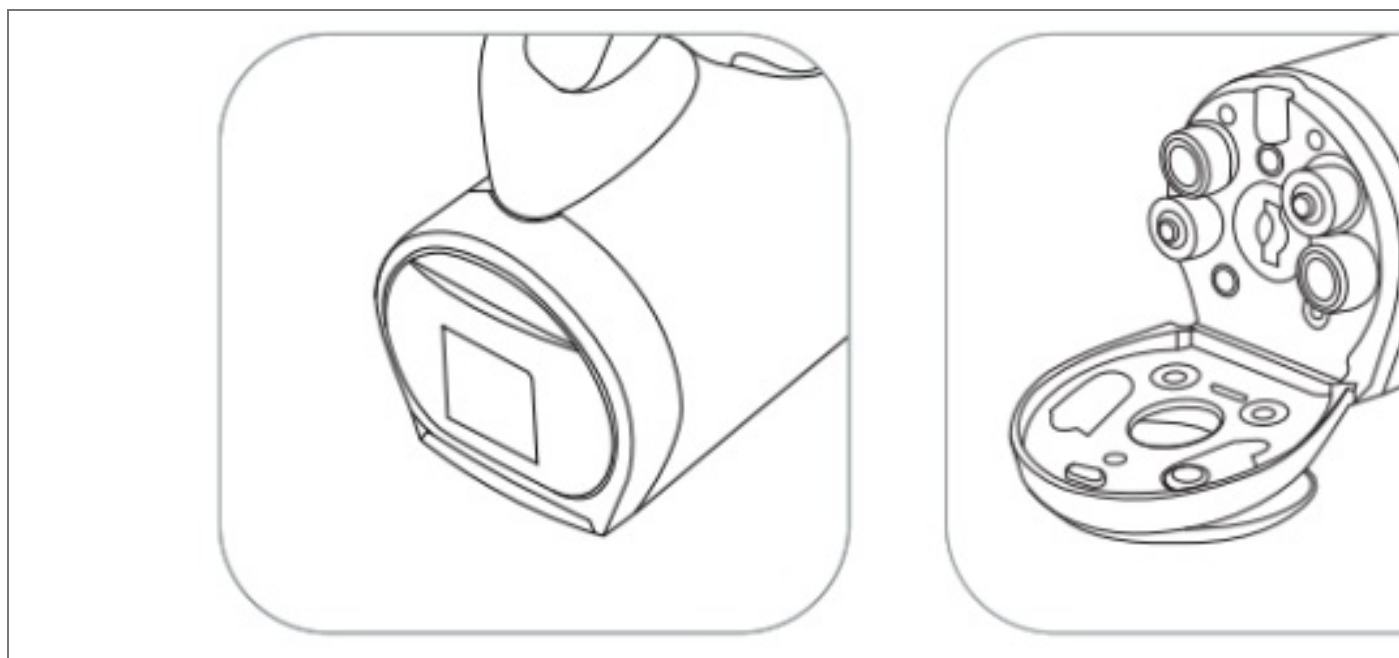


Battery installation
assistance tool*1



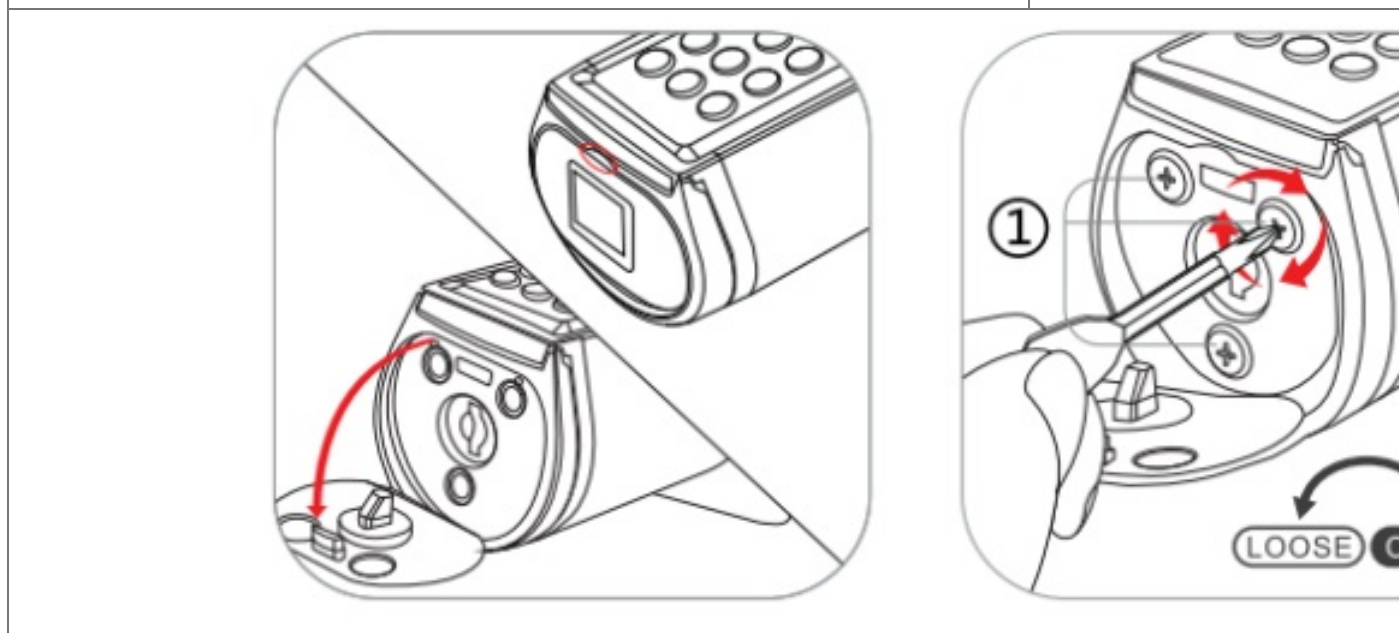
Product ID*1 Manual*1

Install battery



1. Insert the battery installation assistance tool and rotate to open the battery compartment cover



2. Install battery



3. Open the silicone cover

4. Tighten the screws

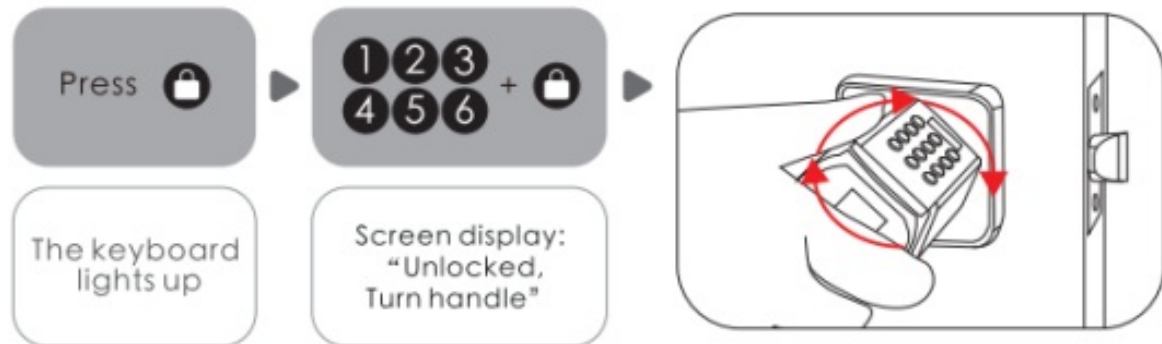
Operating instruction

1. Enter the wrong passcode 5 times continuously, the system is locked for three minutes and cannot operate.
2. Press  to wake up the keyboard+10 digits temporary passcode enter the wrong passcode 5 times continuously, the system is locked for three minutes and cannot operate. Temporary passcode generation needs to be done in the App. The time on the screen should be the same as the time on the phone. otherwise, the temporary passcode will be invalid
3. Press  to wake up the keyboard+swipe the IC cards Swipe the unmatched card 5 times continuously, the system is locked for three minutes and cannot operate. Any IC card can unlock the door in the factory state.

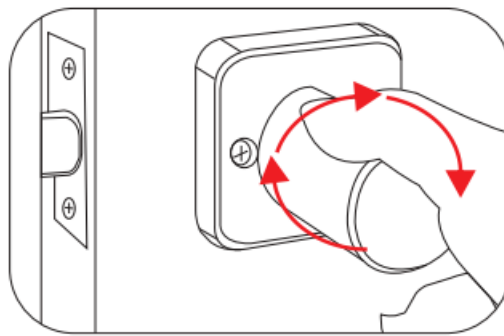
4. Bind the lock on APP via Bluetooth, click “unlock, and the phone line will be synchronized to the lock via Bluetooth.

Unlock and lock

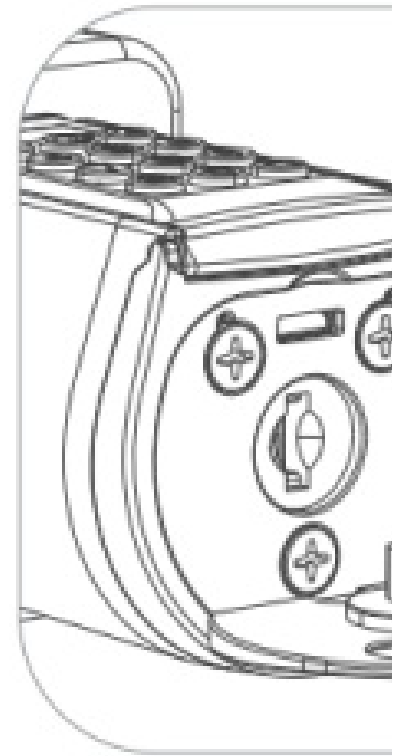
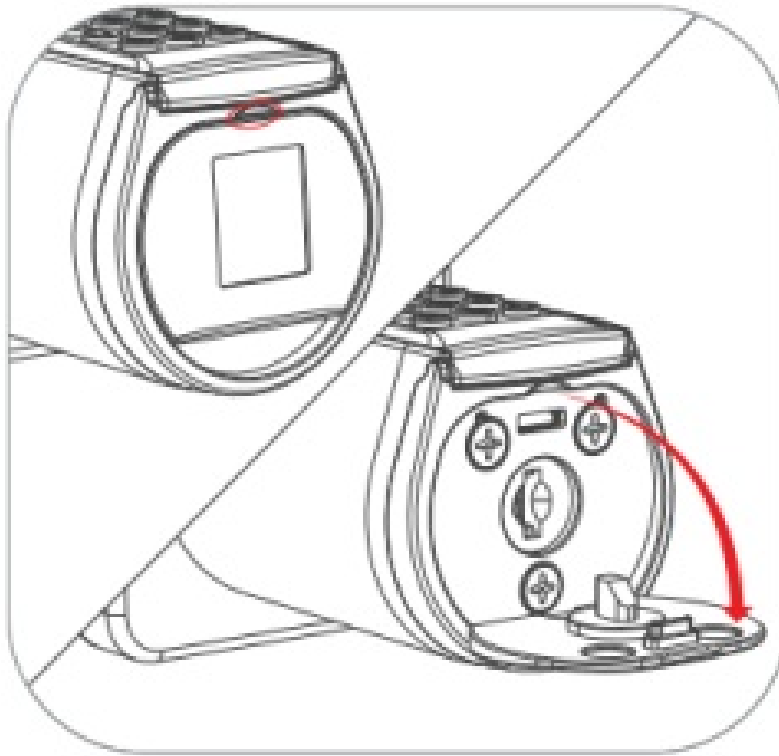
Unlock the door from outside You can unlock the door in any direction



the rear handle can be turned left or right at 90°.
To protect the lock not being damaged by torsion forcefully

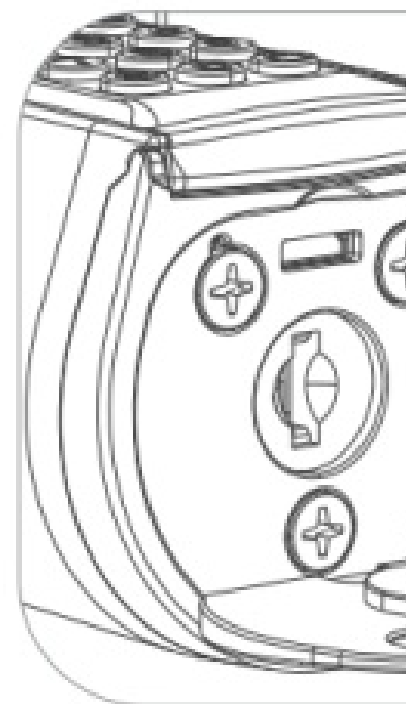
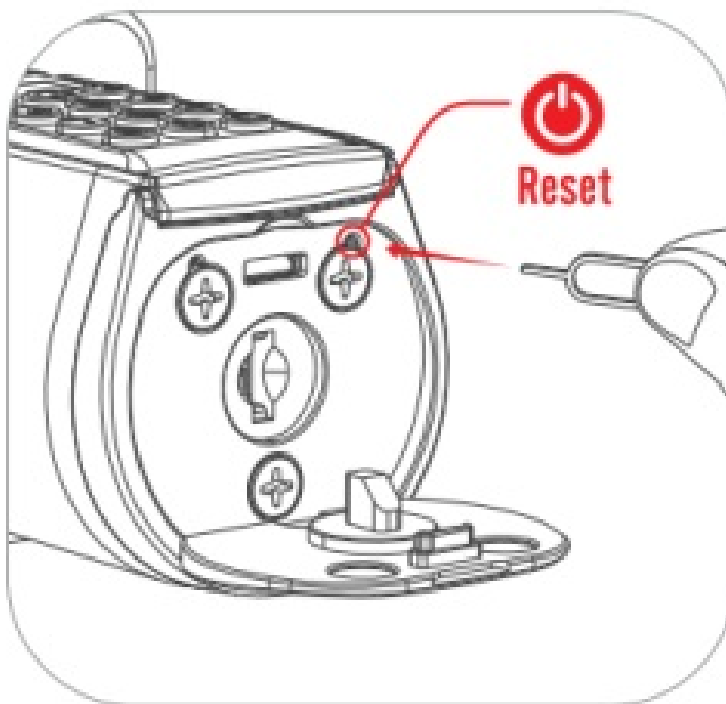


Resetting diagram



1. Opening the silicone cover

2. Find the Thimble in the attached accessories

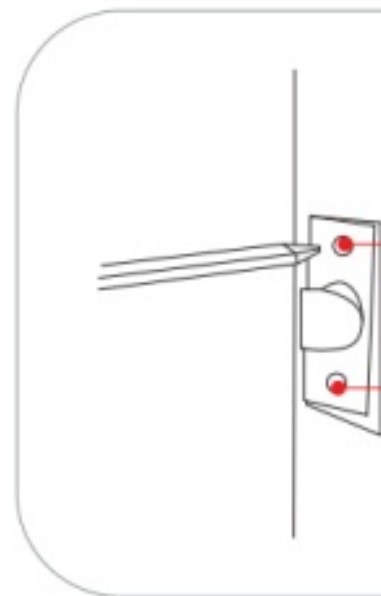


3. Find the hole where the reset

4.1 Insert the thimble into the hole button is located and press the reset button

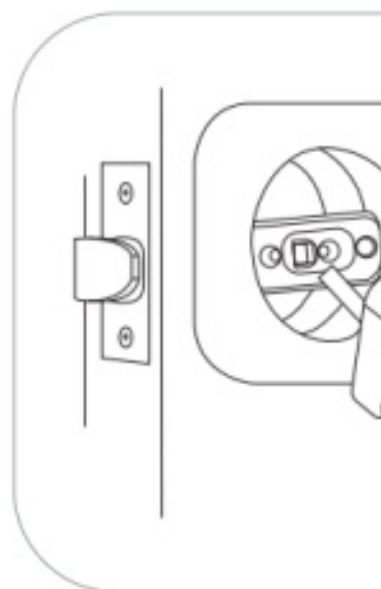
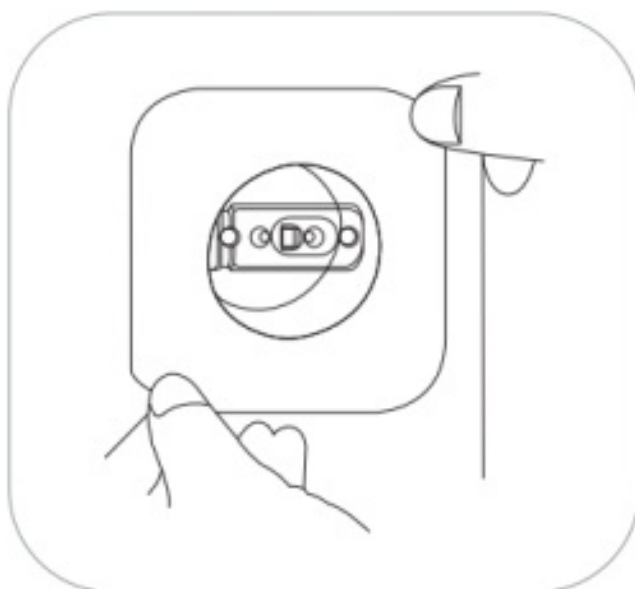
Installation diagram

2.1 Picture of installation Inward opening door: The inclined surface of the bolt face outwards when installing



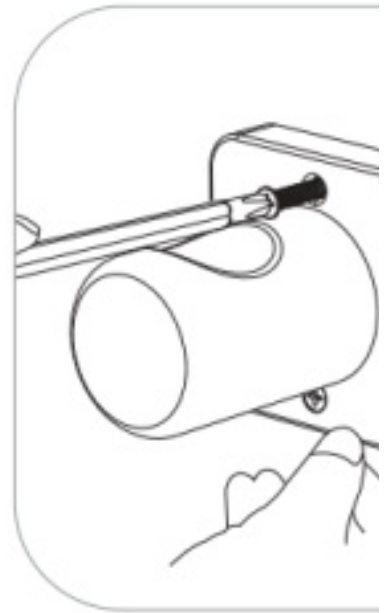
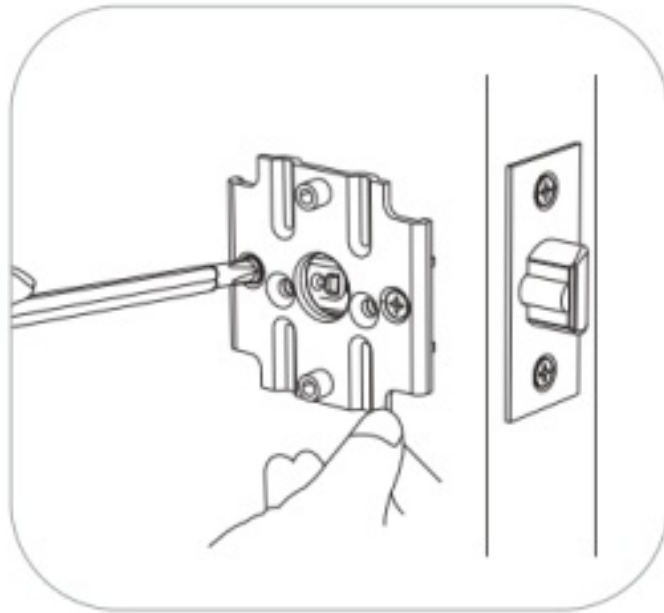
1. The length of the lock body can be adjusted according to the diameter of the keyhole

2. Install the



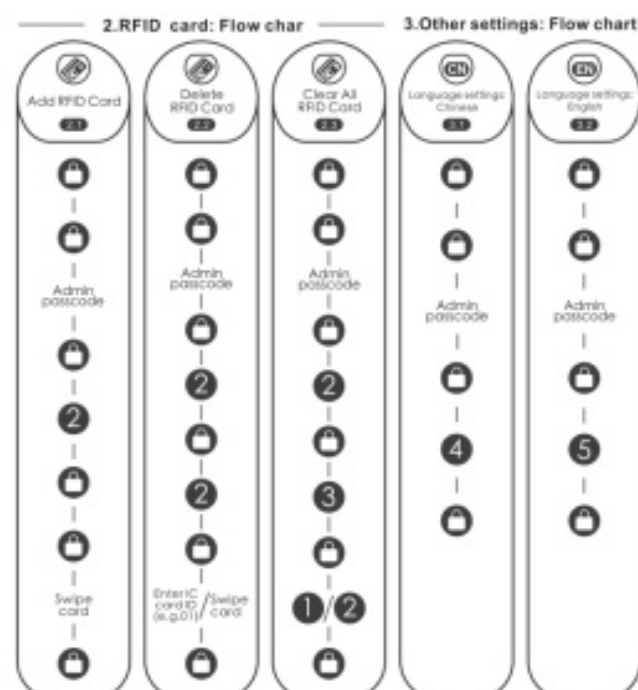
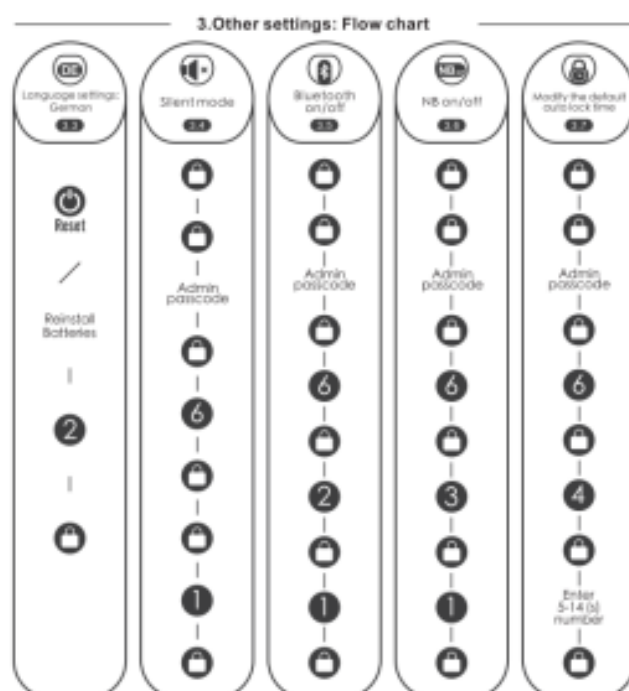
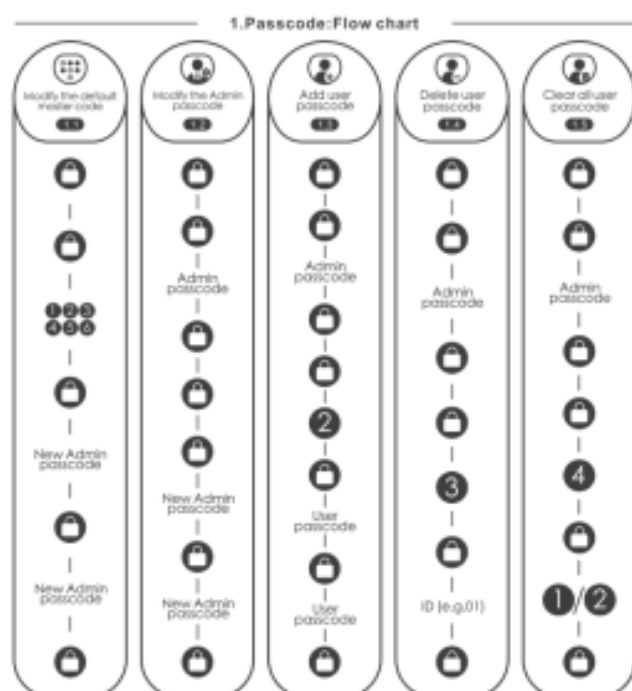
3. Place the lock body and

4. Install o

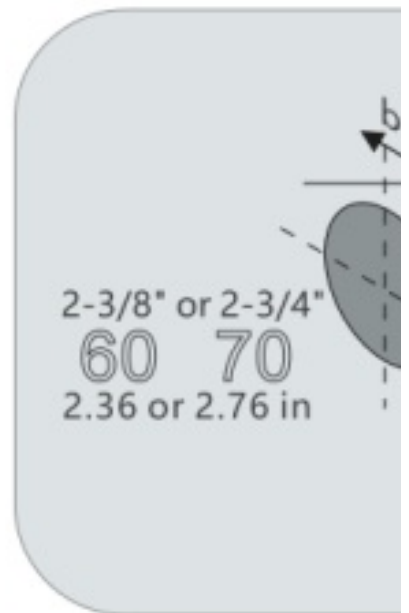
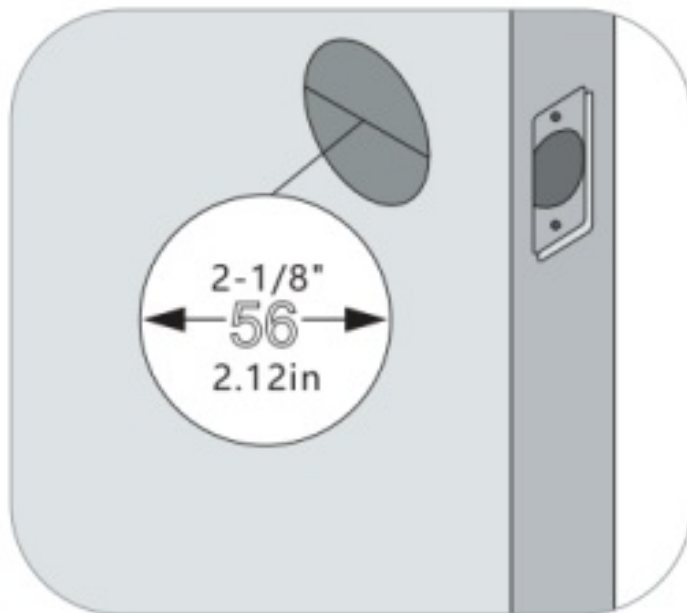


5. Install the mounting bracket and tighten the mounting bracket screws

6. Install the rear panel handle

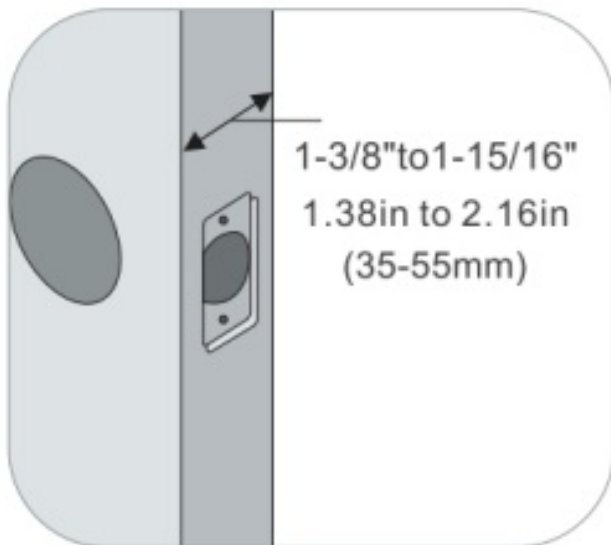


Applicable size



1. Measure to confirm that the hole in the door is 2-1/8" (2.12in)

2. measure to confirm that backset is either 2-3/8" (60mm) or 2-3/4" (70mm)



3. Measure to confirm that the door is 1-3/8" to 2" (1.36in to 1.97in)



Low battery prompt:

After waking up, the screen displays:



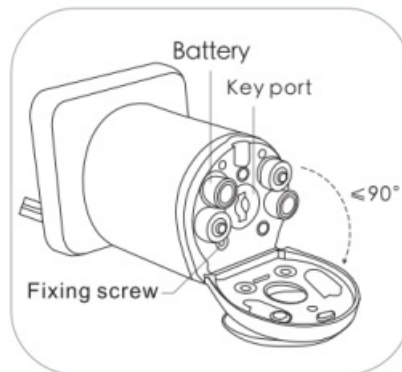
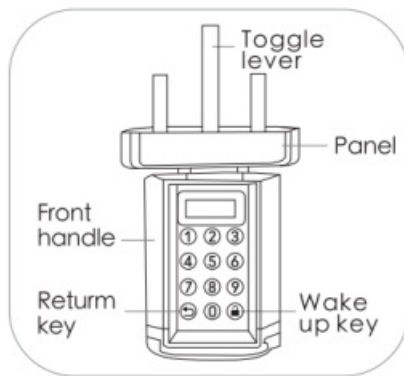
Battery Low

After 3 "beep beep beep" beeps The screen prompts: "Battery Low".

Battery Low

Please replace the battery promptly when the above message appears.

Product Introduction



Bluetooth activation and login instructions

Scan the QR code on the lock.

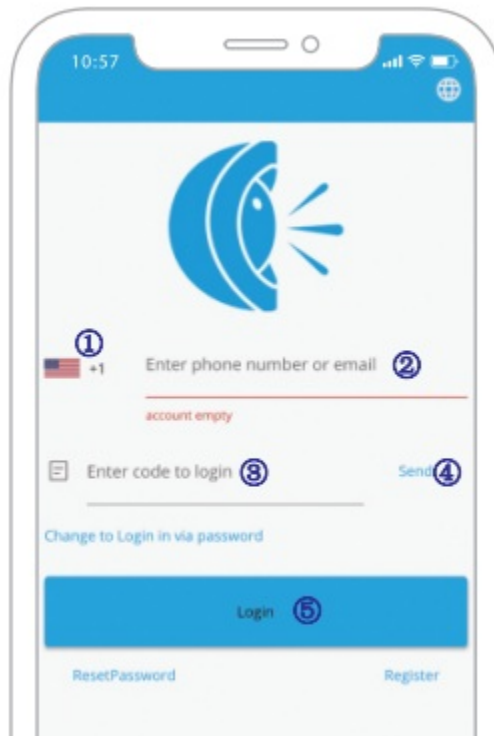


Select "Android/iOS" to download.



Log in to the app

1. Select your country/region
2. Enter the phone number/email to get the verification code
3. Click "Send"
4. Enter the verification code after receiving the message
5. Click "Login"



Bind the device



FAQ

- **How often is the battery changed?**

When the low battery alarm occurs, the battery needs to be replaced in time.

- **When will the low battery alarm be?**

The battery is below 20%.

- **How can enter scramble code ?**

Enter any number before and after the correct postcode, 30 digits or less.

- **How can unlock when the battery runs out?**

Users can use a mobile power supply to power the lock via a micro USB cable, and then use our App to unlock it.

- **How can contact customer service?**

Please contact this email: Service@WelockGlobal.com

FCC WARNING

This device complies with part 15 of the FCC Rules. Operation is subject to the following two conditions: (1) This device may not cause harmful interference, and (2) this device must accept any interference received, including interference that may cause undesired operation.

Any changes or modifications not expressly approved by the party responsible for compliance could void the user's authority to operate the equipment.

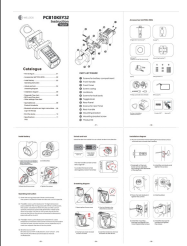
NOTE: This equipment has been tested and found to comply with the limits for a Class B digital device, pursuant to part 15 of the FCC Rules. These limits are designed to provide reasonable protection against harmful interference in a residential installation. This equipment generates uses and can radiate radio frequency energy and, if not installed and used in accordance with the instructions, may cause harmful interference to radio communications. However, there is no guarantee that interference will not occur in a particular installation. If this equipment does cause harmful interference to radio or television reception, which can be determined by turning the equipment off and on, the user is encouraged to try to correct the interference by one or more of the following measures:

- Reorient or relocate the receiving antenna.
- Increase the separation between the equipment and receiver.
- Connect the equipment into an outlet on a circuit different from that to which the receiver is connected.
- Consult the dealer or an experienced radio/TV technician for help.

The device has been evaluated to meet general RF exposure requirements. The device can be used in portable exposure conditions without restriction.



Documents / Resources

	<p>WE LOCK PCB10KEY32 Electronic Smart Lock Fingerprint Password Bluetooth Lock [pdf]</p> <p>f] Instructions</p> <p>PCB10KEY32, 2A4RN-PCB10KEY32, 2A4RNPCB10KEY32, PCB10KEY32, Electronic Smart Lock Fingerprint Password Bluetooth Lock</p>
---	--