



WE LOCK PCB10EBL41 Password Bluetooth Smart Door Lock Instructions

[Home](#) » [WE LOCK](#) » WE LOCK PCB10EBL41 Password Bluetooth Smart Door Lock Instructions 

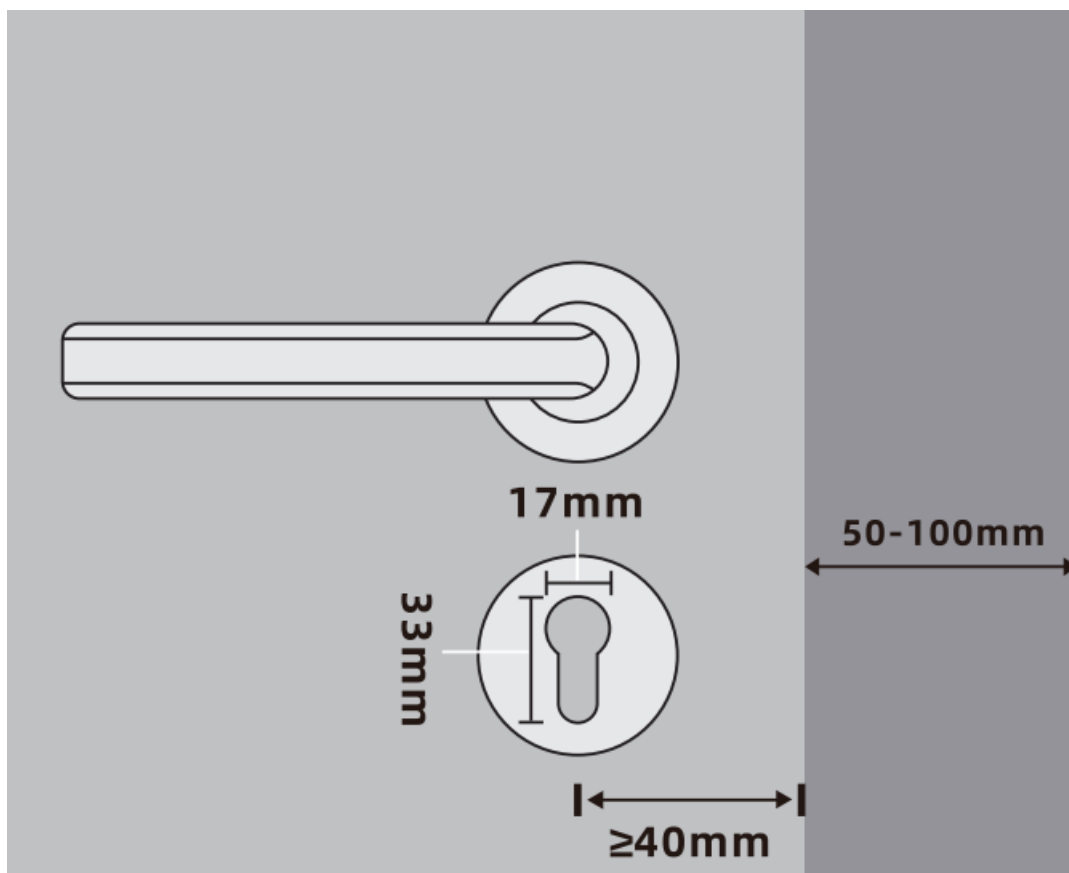
WE LOCK PCB10EBL41 Password Bluetooth Smart Door Lock Instructions



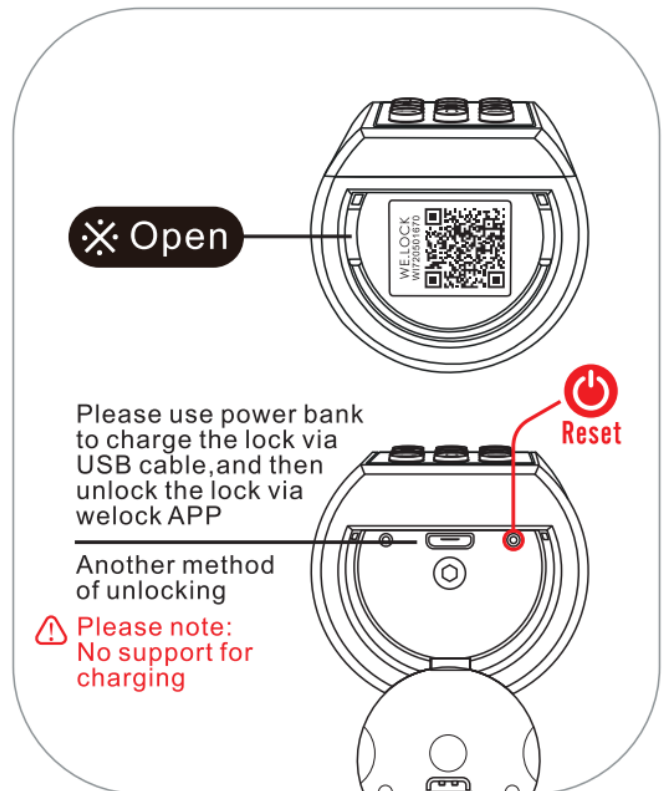
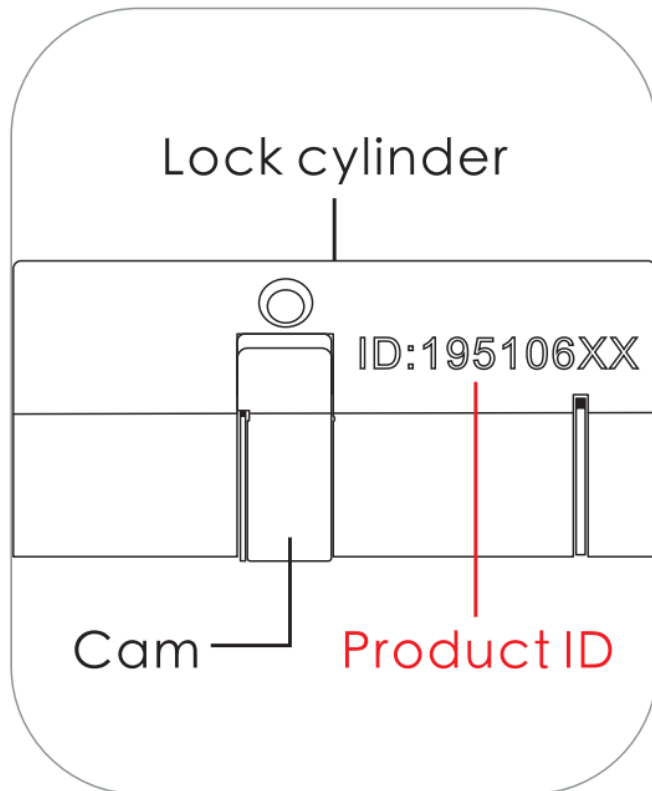
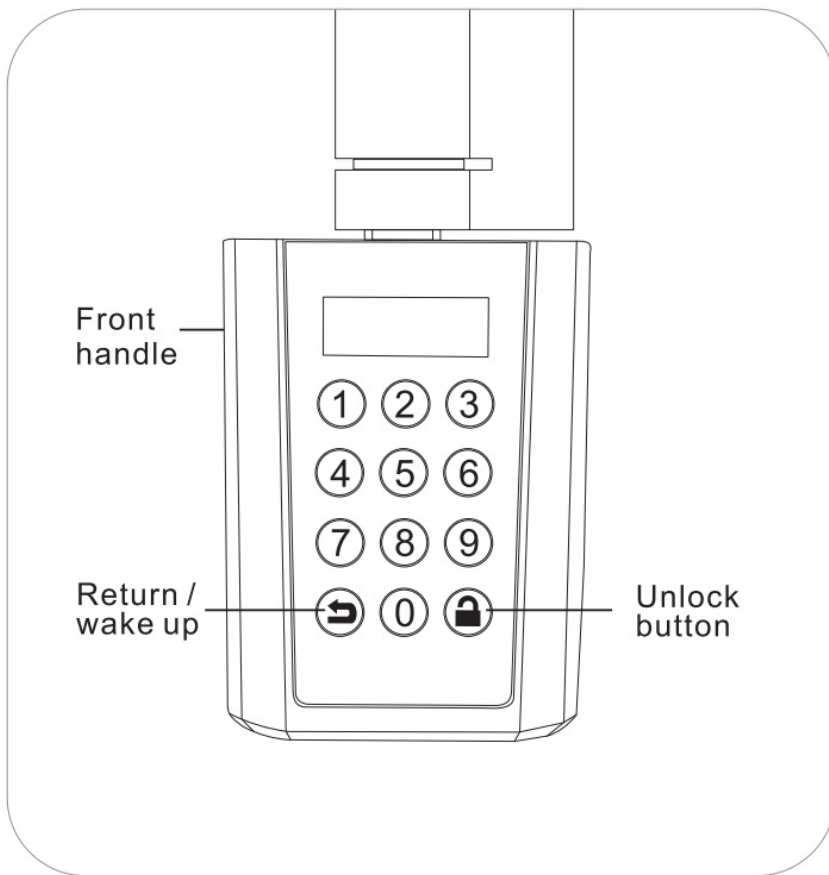
Contents

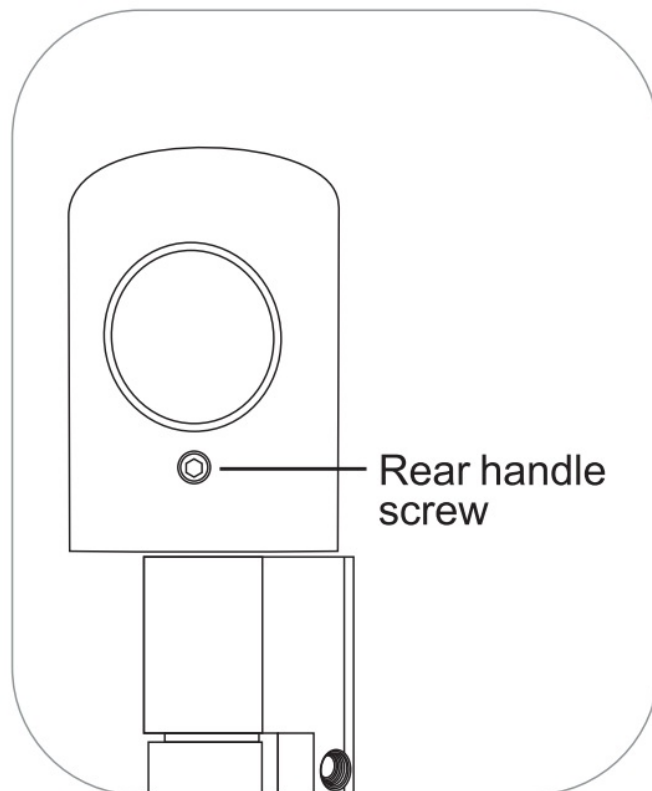
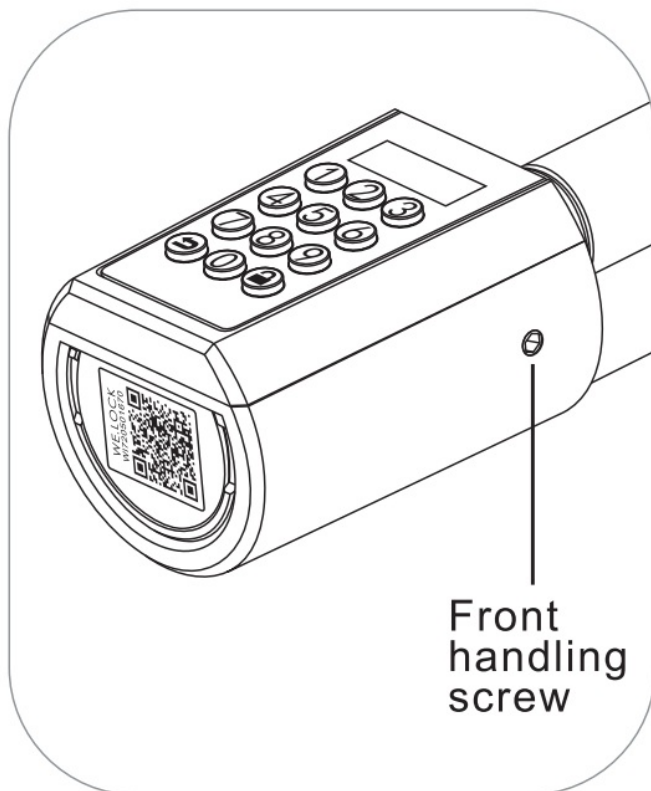
- 1 Applicable size
- 2 Product Components
- 3 Passcode: flow chart
- 4 RFID Card: Flow Chart
- 5 Other Settings: Flow Chart
- 6 Accessories list (TOOL BOX)
- 7 Install battery
- 8 Adjust the length of the cylinder
- 9 Installation pictures
- 10 Resetting diagram
- 11 Unlock and lock
- 12 FAQ
- 13 Log in to the app
- 14 Bind the device
- 15 Specifications
- 16 Operating instruction
- 17 Documents / Resources
- 18 Related Posts

Applicable size

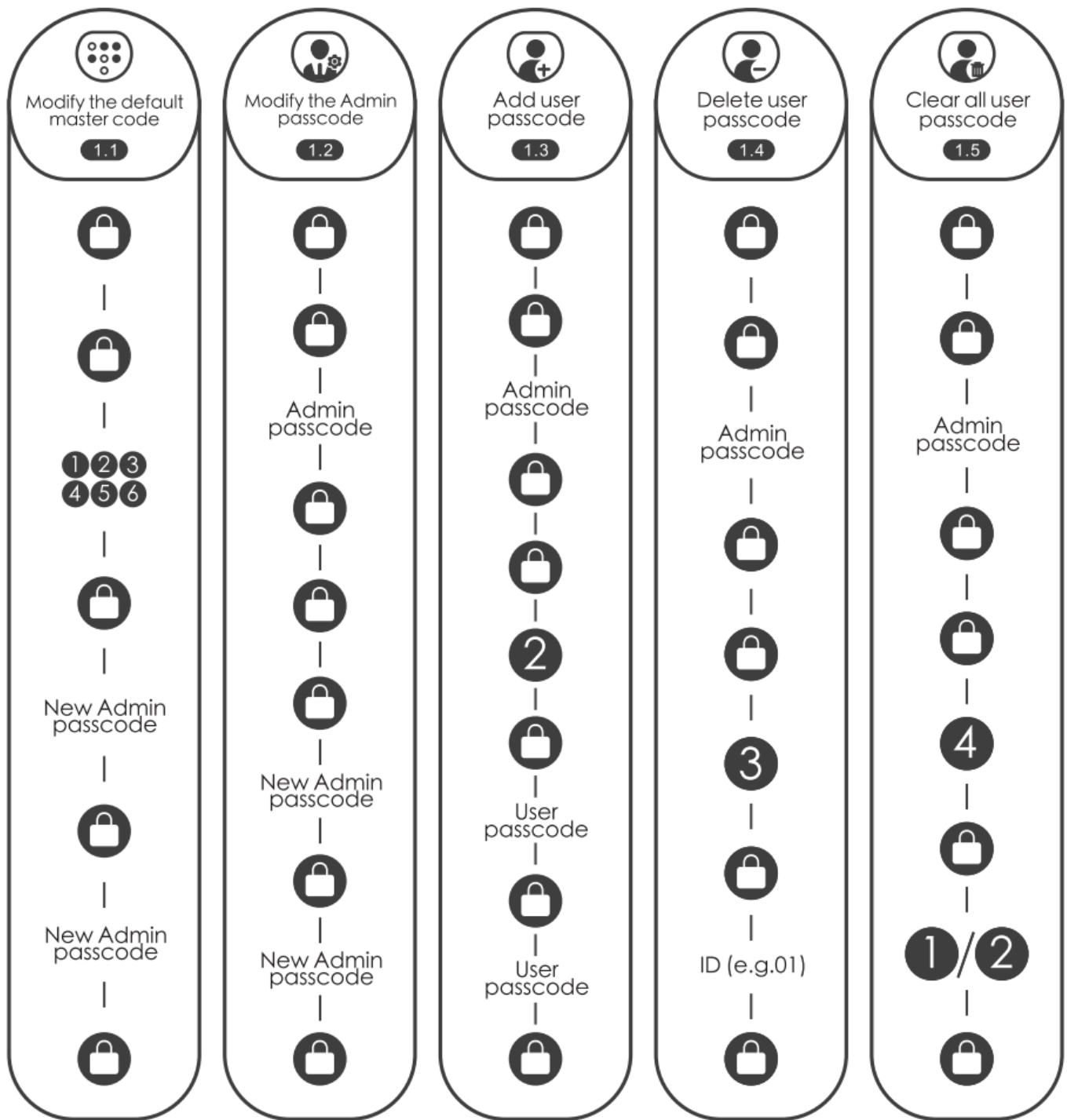


Product Components

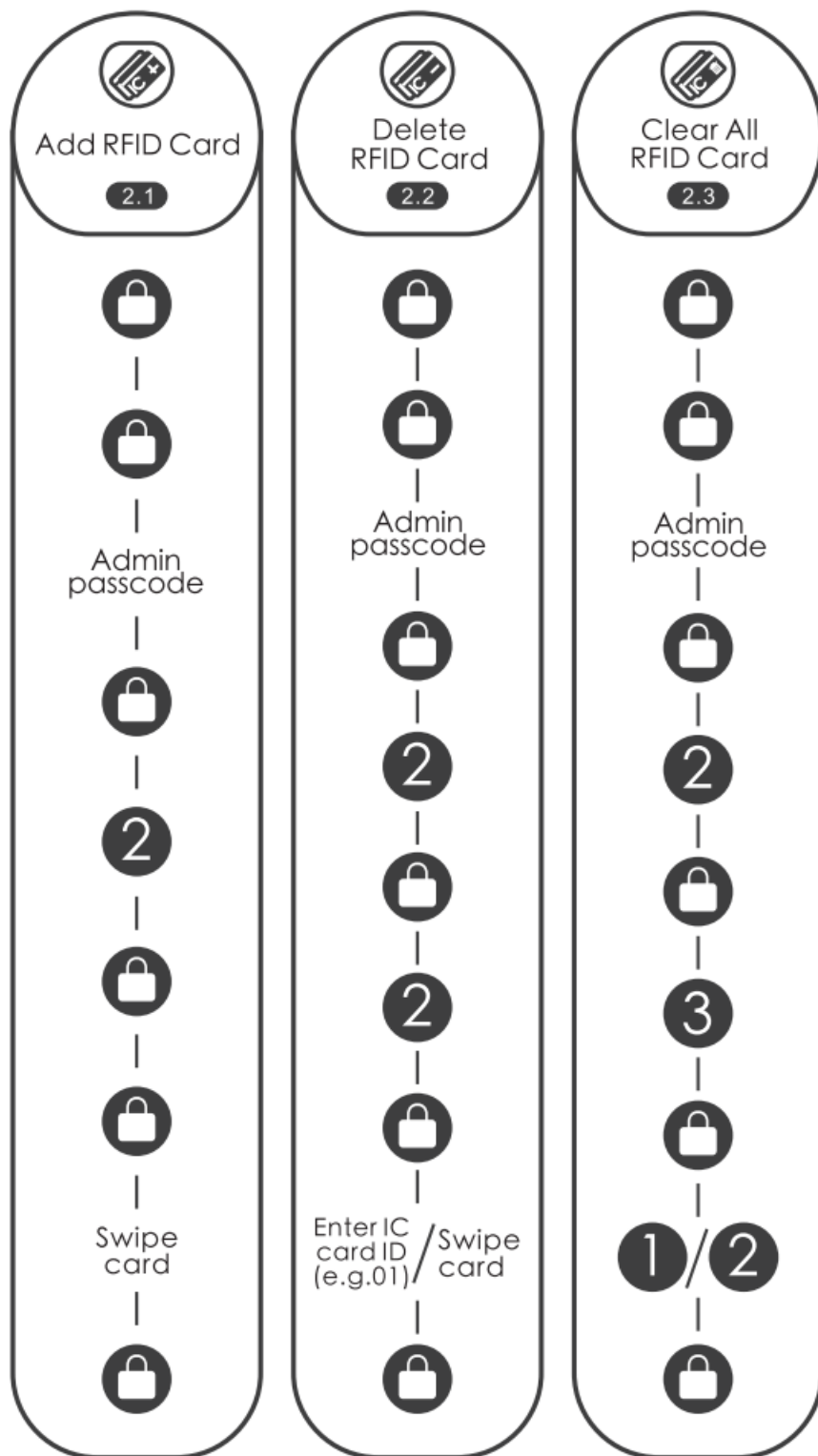




Passcode: flow chart



RFID Card: Flow Chart



Other Settings: Flow Chart



Language settings:
Chinese

3.1



Admin
passcode



4



Language settings:
English

3.2



Admin
passcode



5





Language settings:
German

3.3



Reset



Reinstall
Batteries

|

2

|



Silent mode

3.4



|



|

Admin
passcode

|



|

6

|



|



|

1

|



Bluetooth
on/off

3.5



|



|

Admin
passcode

|



|

6

|



|

2

|



|

1

|



NB on/off

3.6



|



|

Admin
passcode

|



|

6

|



|

3

|



|

1

|



Modify the default
auto lock time

3.7



|



|

Admin
passcode

|



|

6

|



|

4

|

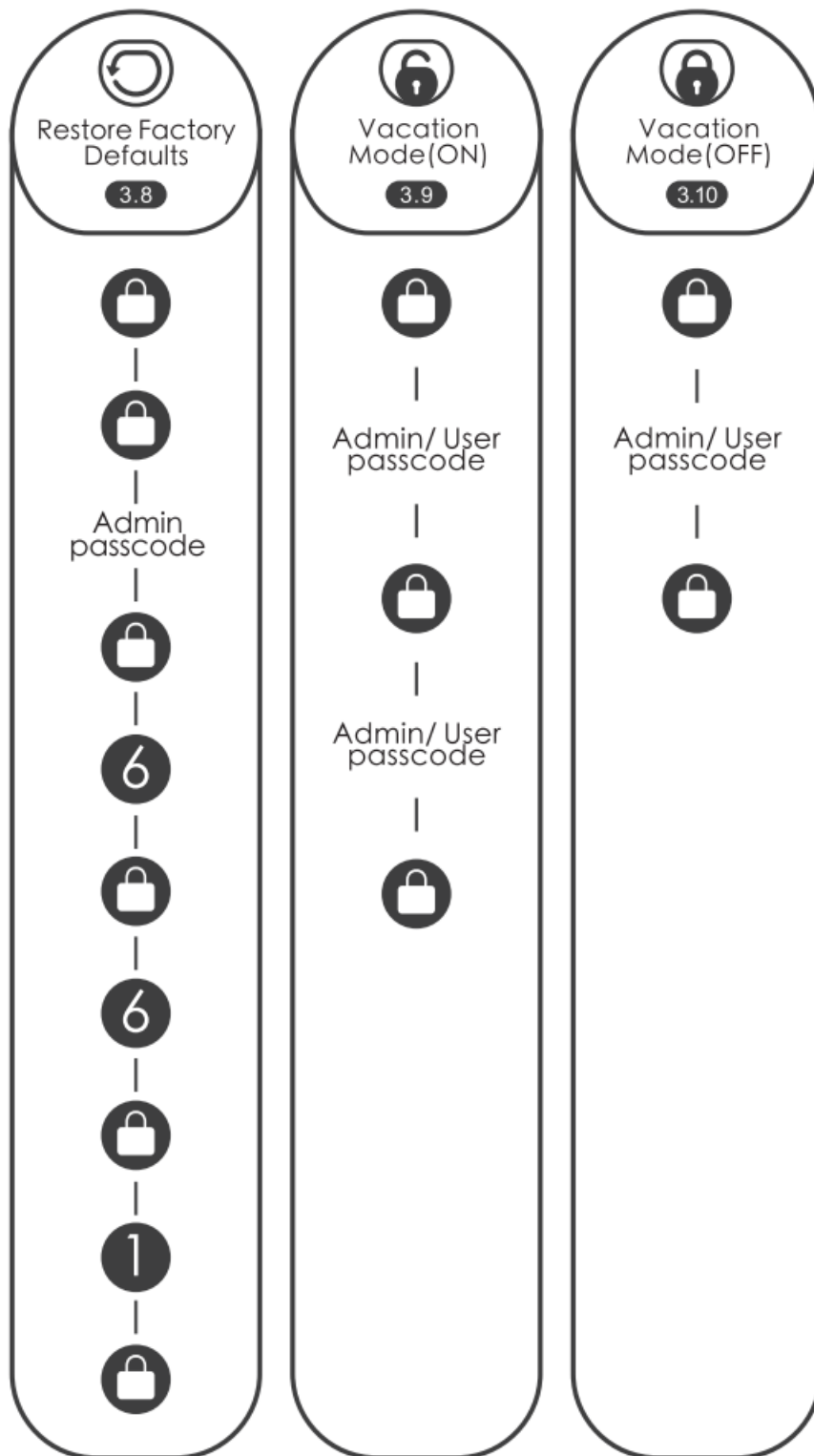


|

Enter
5-14 (s)
number

|





Scan the QR Code on the lock



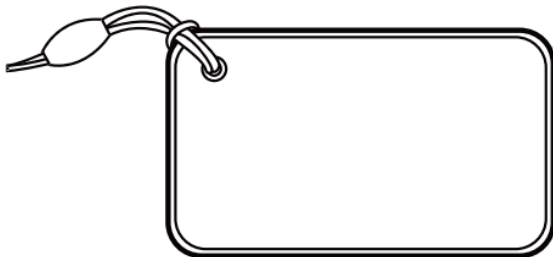
Downloadable Instructions and Watch Videos

A smart way to open your door. WE.LOCK
www.WELOCK.com

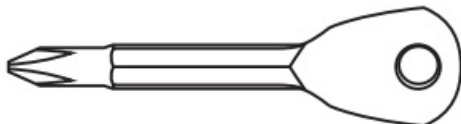
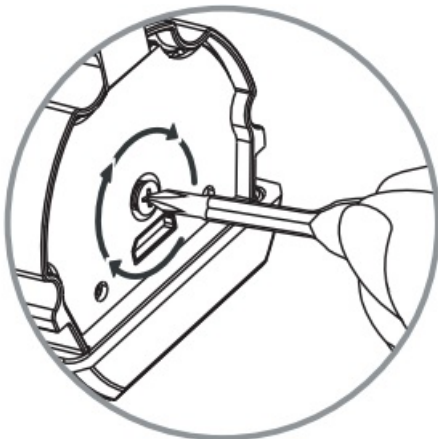
Accessories list (TOOL BOX)

If there is alack of accessories, please contact customer service in time.

- RFID Card x3



- Phillips screwdriver x1



- Allen Key x1



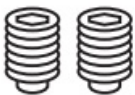
- Manual



- Product ID



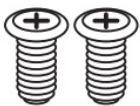
- Fixing screw for battery cover x2



- Thimble x1



- Front handling screw x2

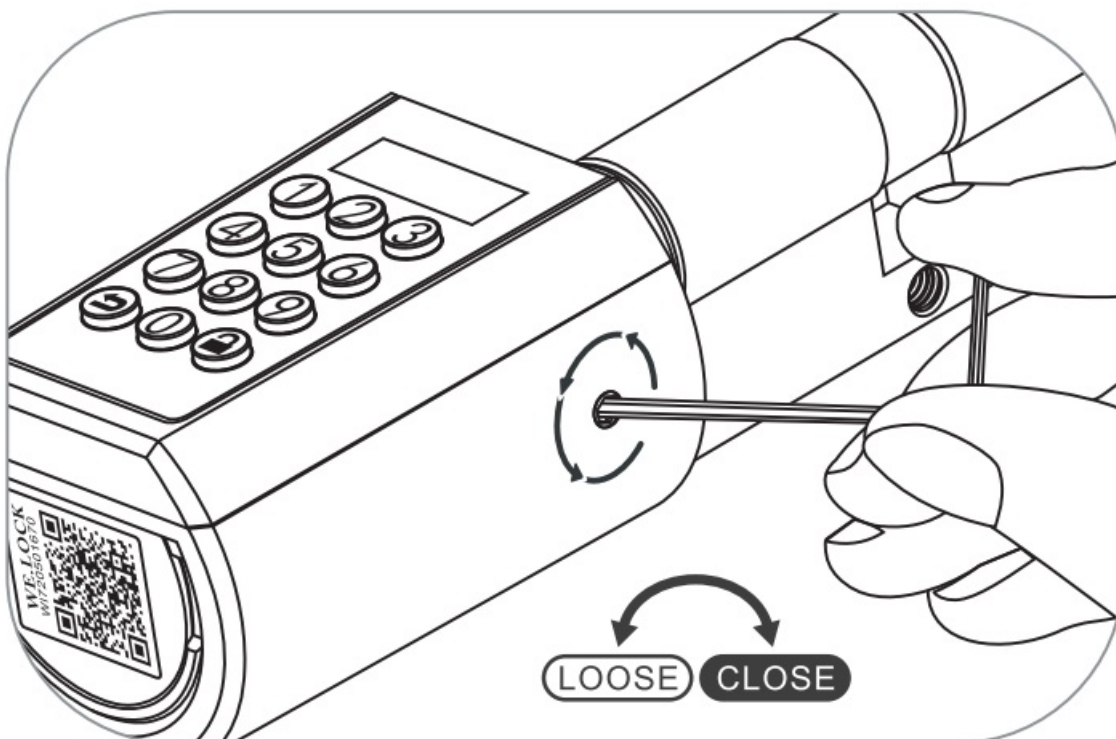


- Silicon plug x2

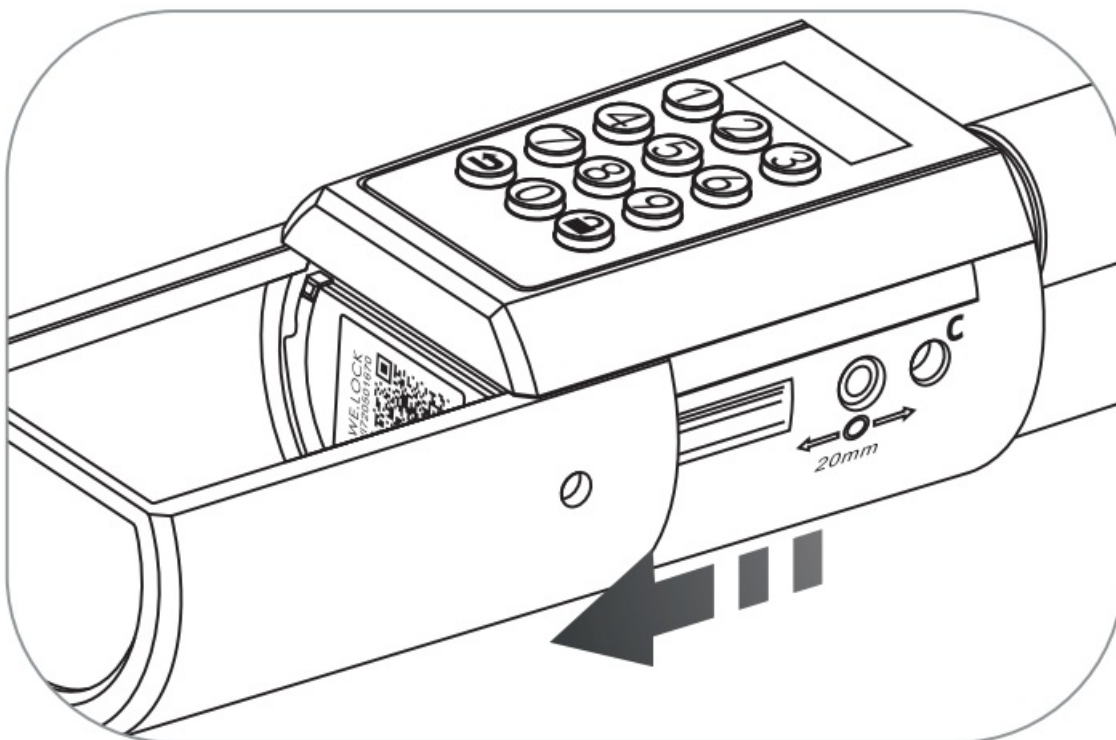


Install battery

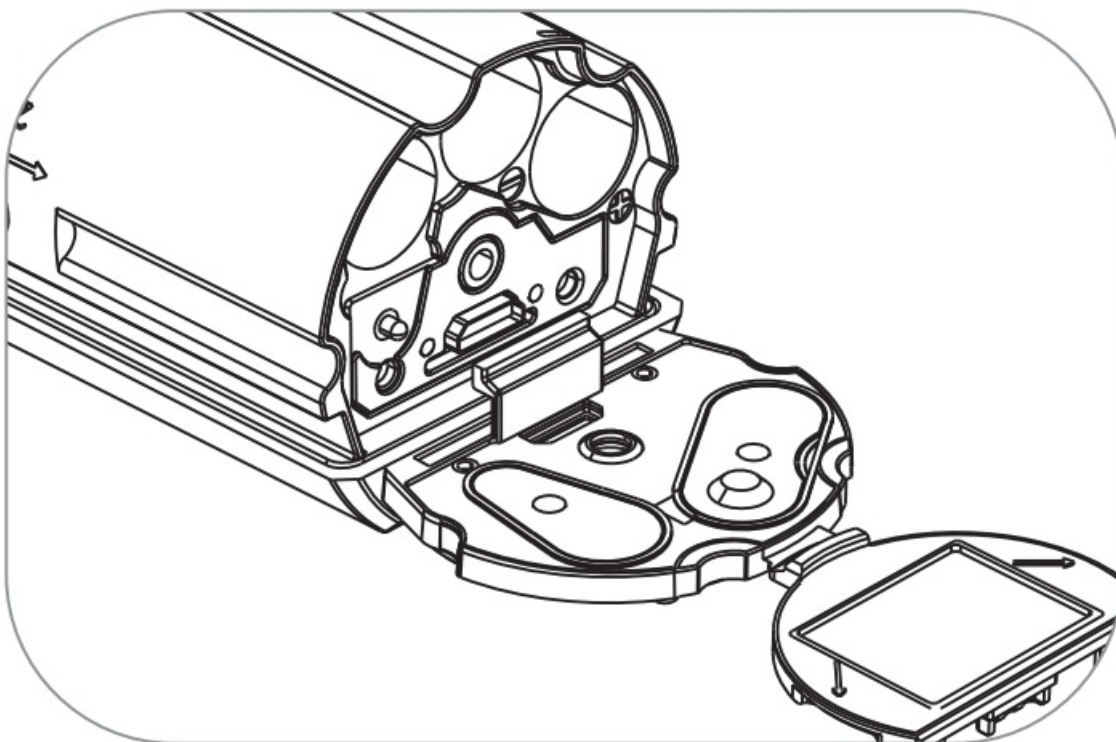
1. Loosen the screws with allen key



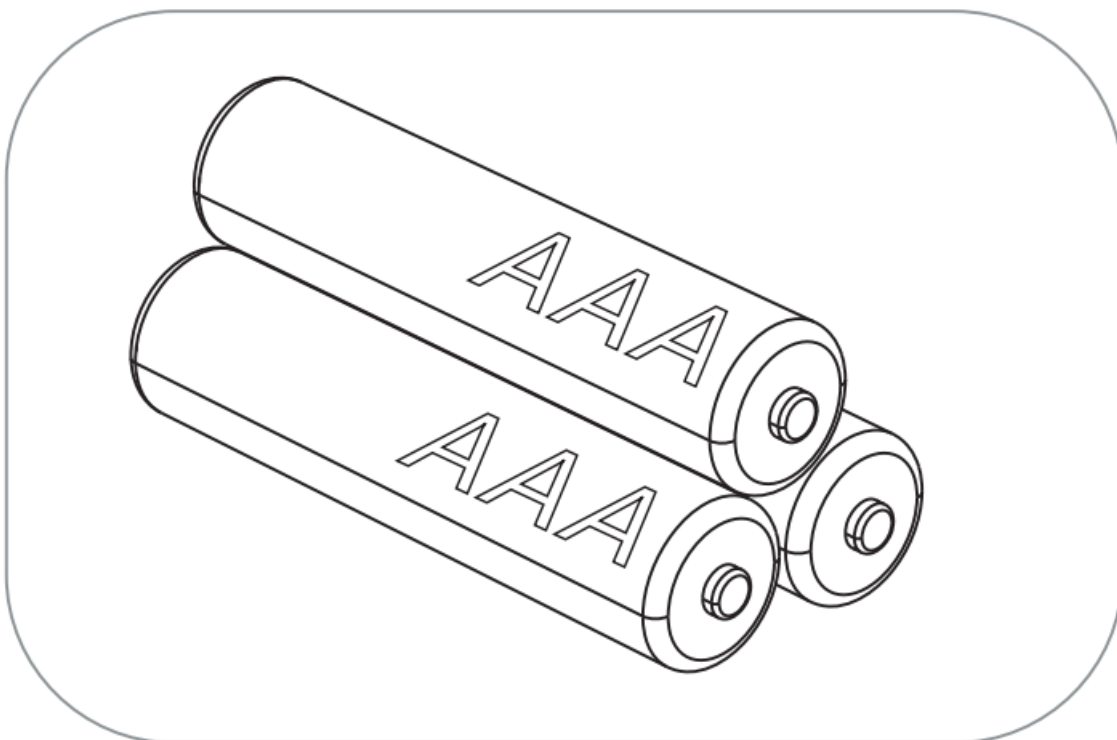
2. Open the stainless steel cover



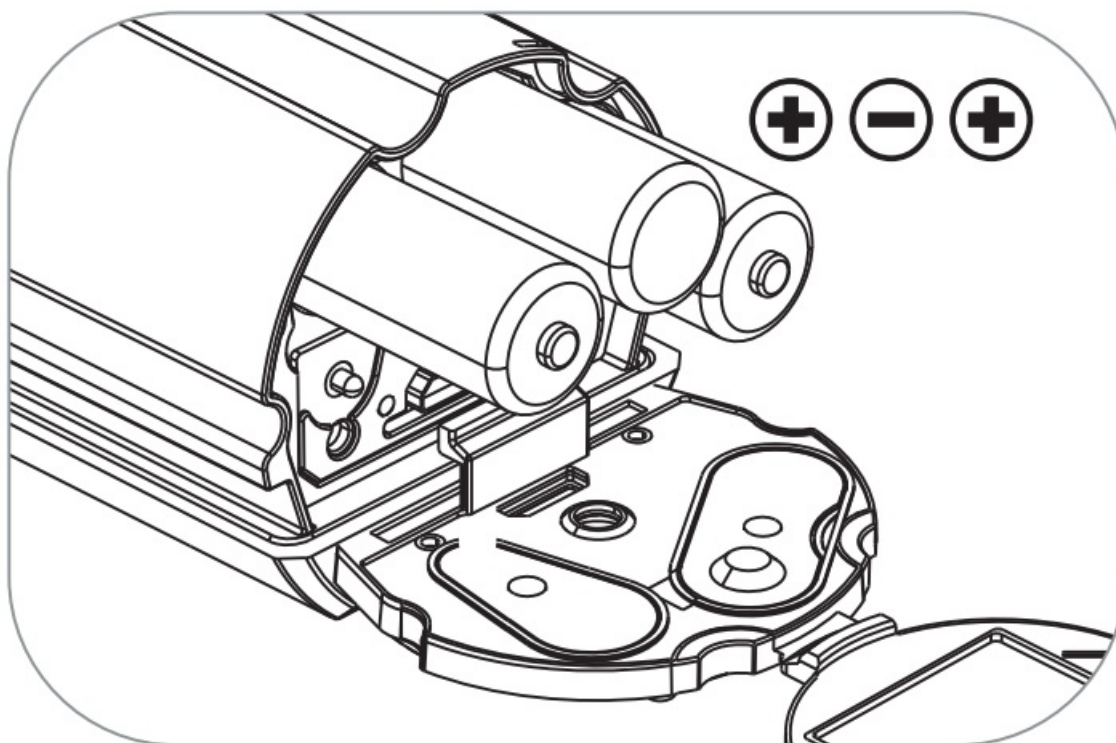
3. Open the battery cover



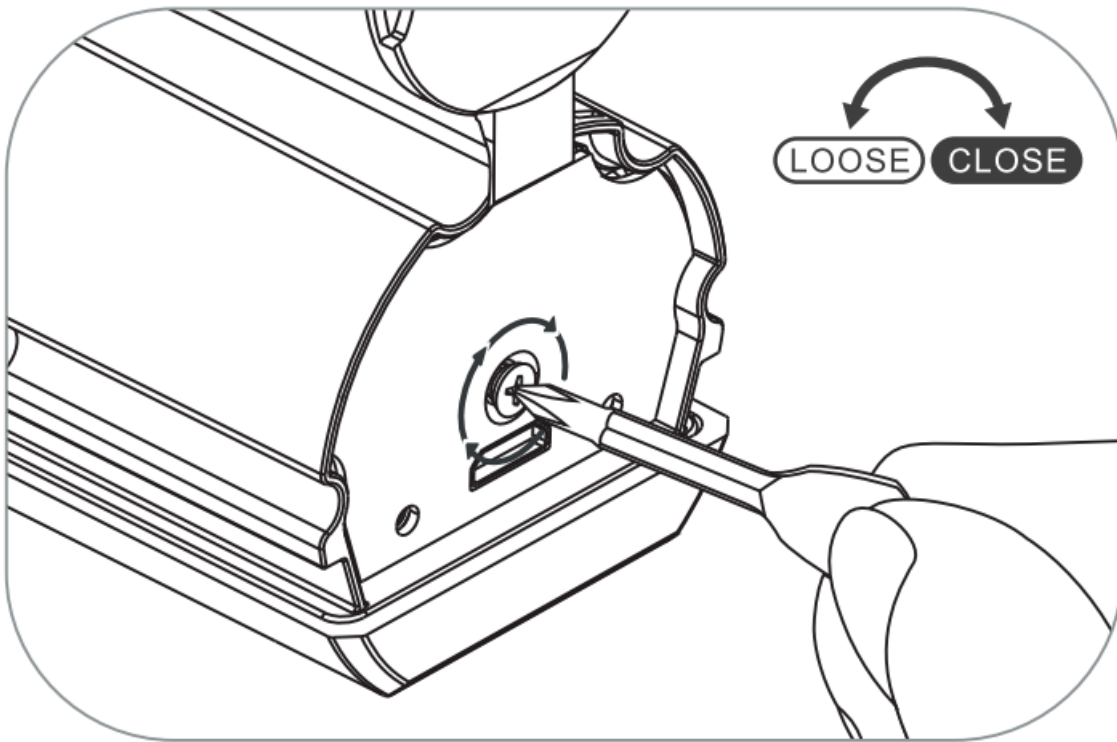
4. 3 x AAA battery (Please buy it by yourself)



5. Install battery



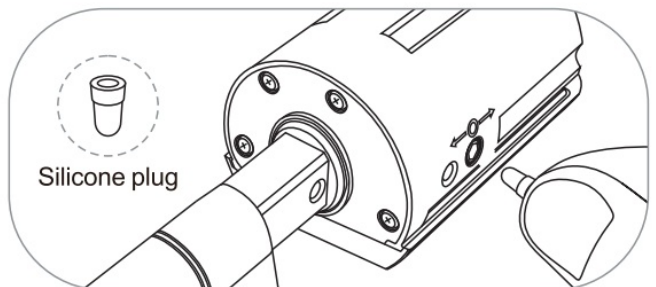
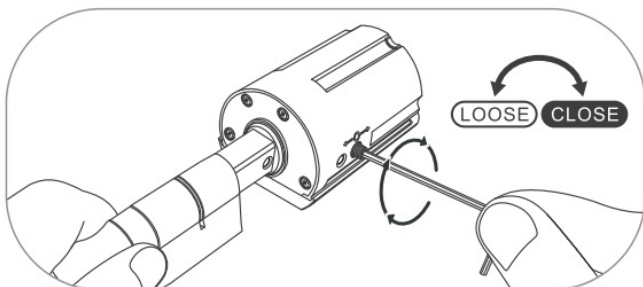
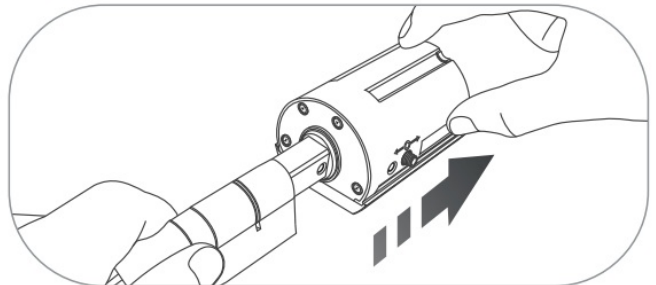
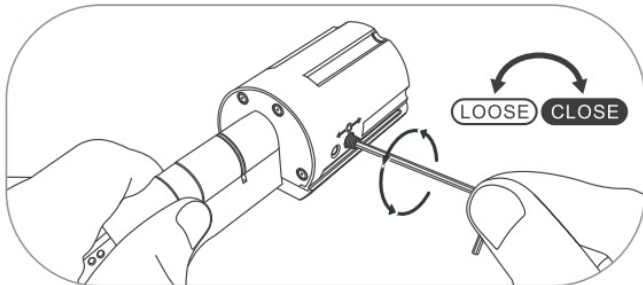
6. Fix the Battery cover and tighten the screws.



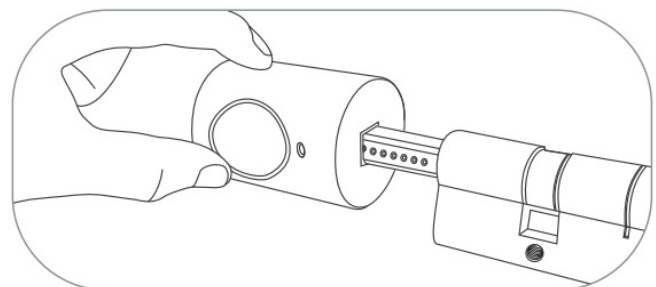
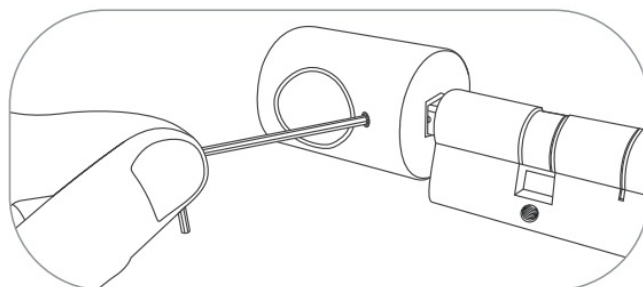
Adjust the length of the cylinder

Depending on the required cylinder length you can adjust the interior and exterior length by loosening the screw with the screwdriver and then pulling out the handle upon need.

Tighten the screws after adjustment and plug the adjustment holes with silicone plug, which can play a certain waterproof effect.

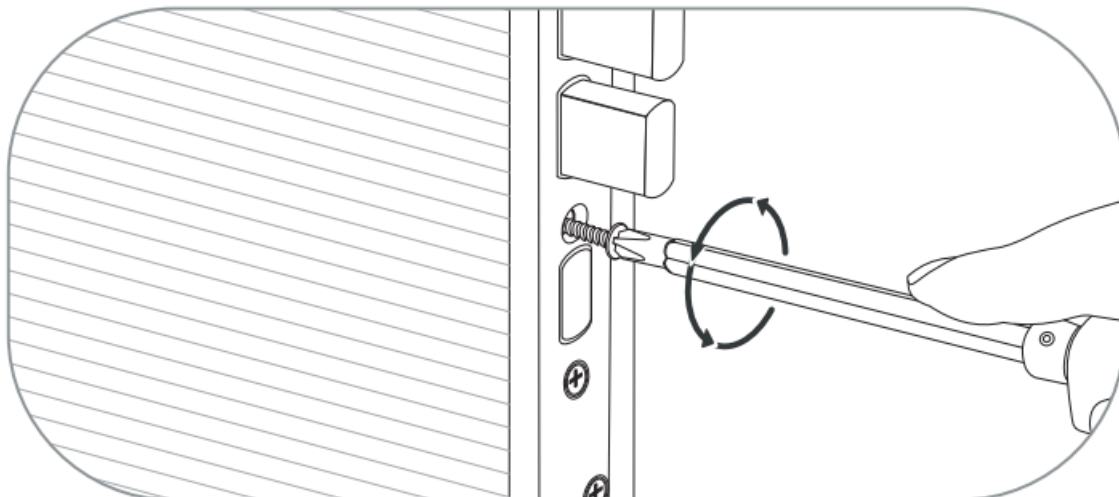


Due to the security reason, the front handle cannot be taken off.

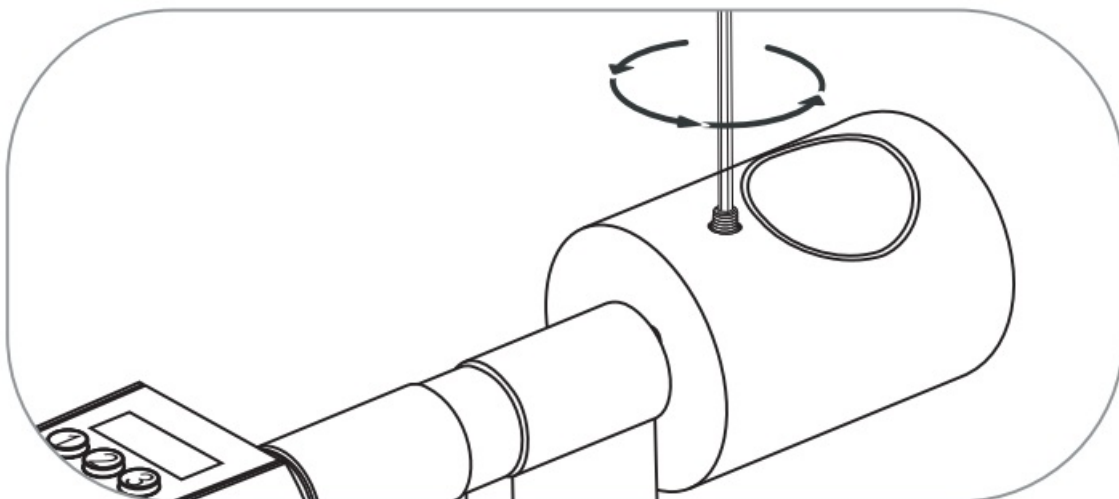


Installation pictures

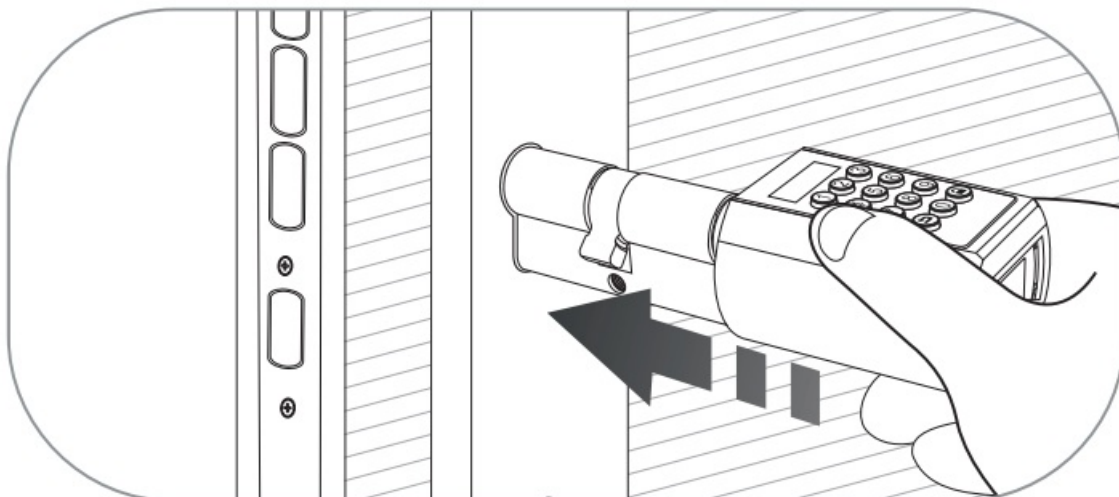
1. Remove the fixing screw and original cylinder.



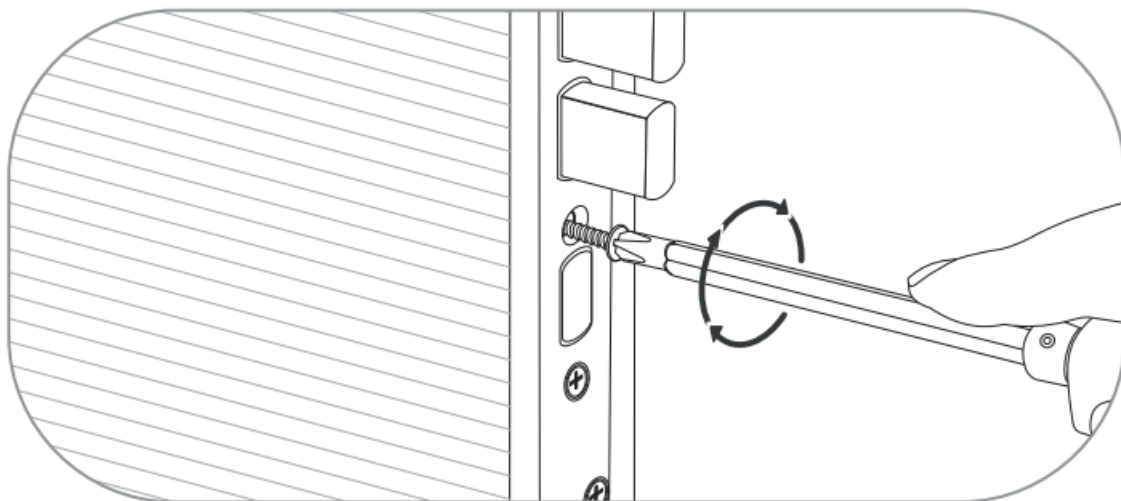
2. Take out the screws and take out the rear handle.



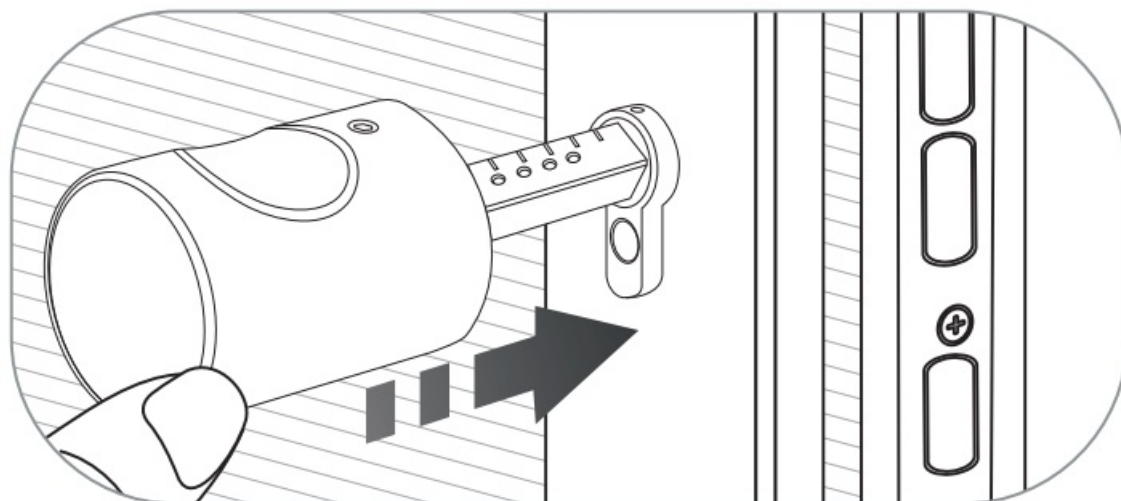
3. The lock cylinder is installed into the lock hole from the outside.



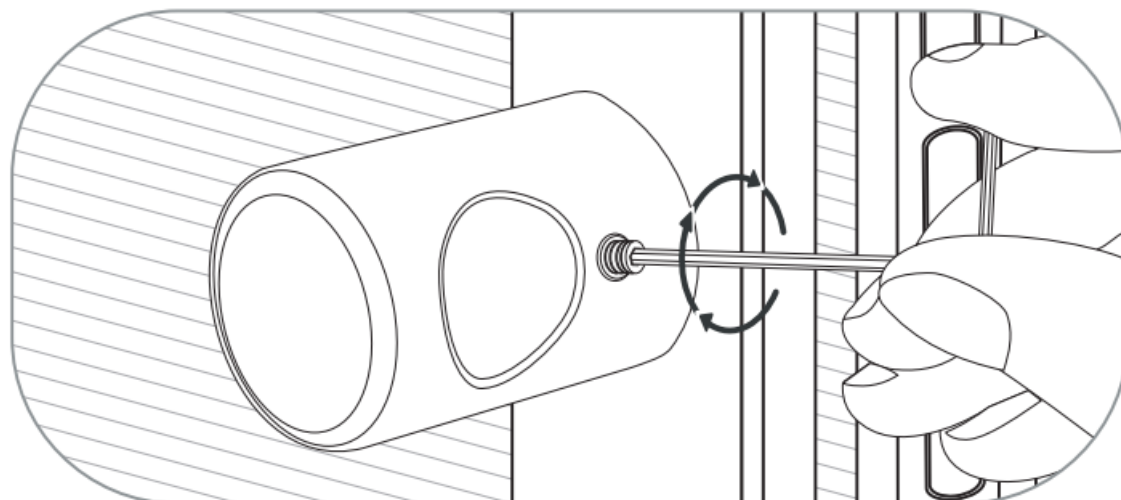
4. Installation Fixing screws.



5. Install rear handle.

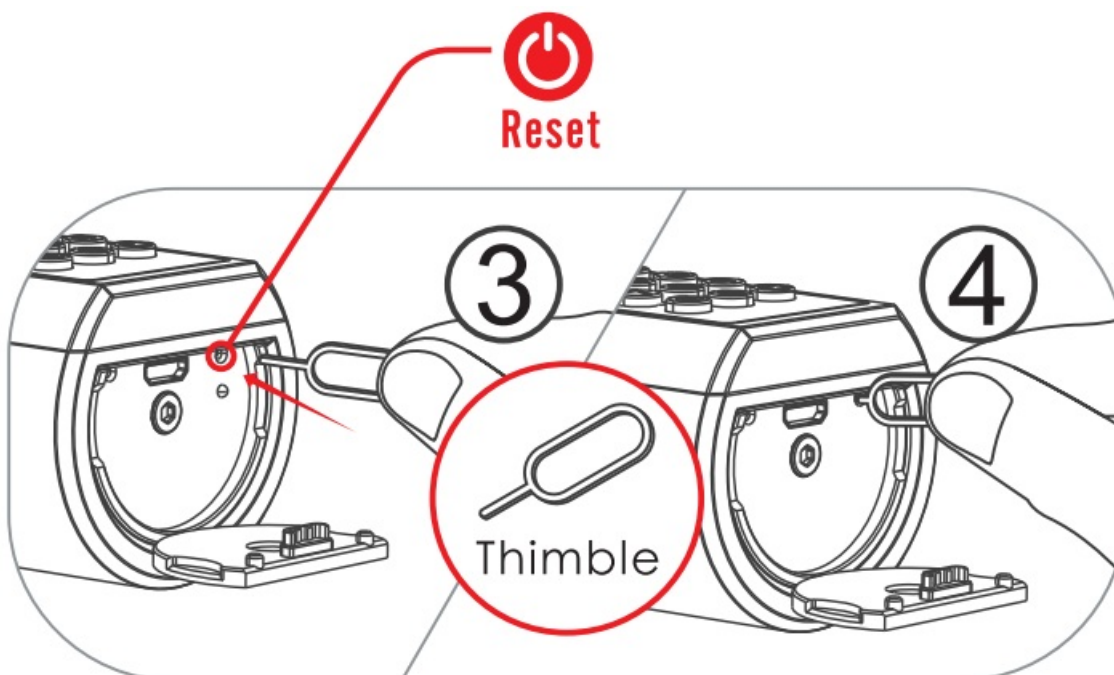
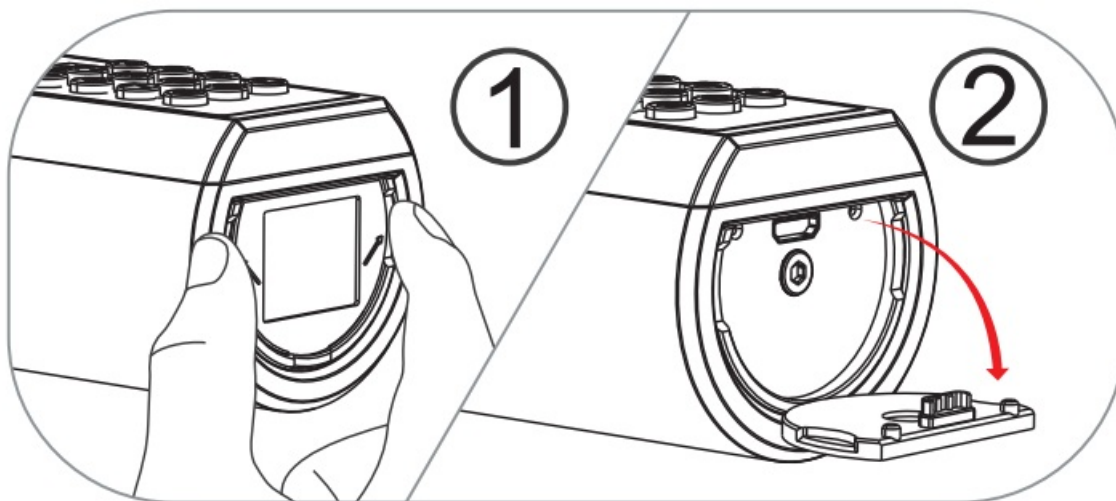


6. Fixed rear handle screw.



Resetting diagram

1. Opening the silicone cover
2. Find the Thimble in the attached accessories.
3. Find the hole where the reset button is located.
4. Insert the thimble into the hole and press the reset button.



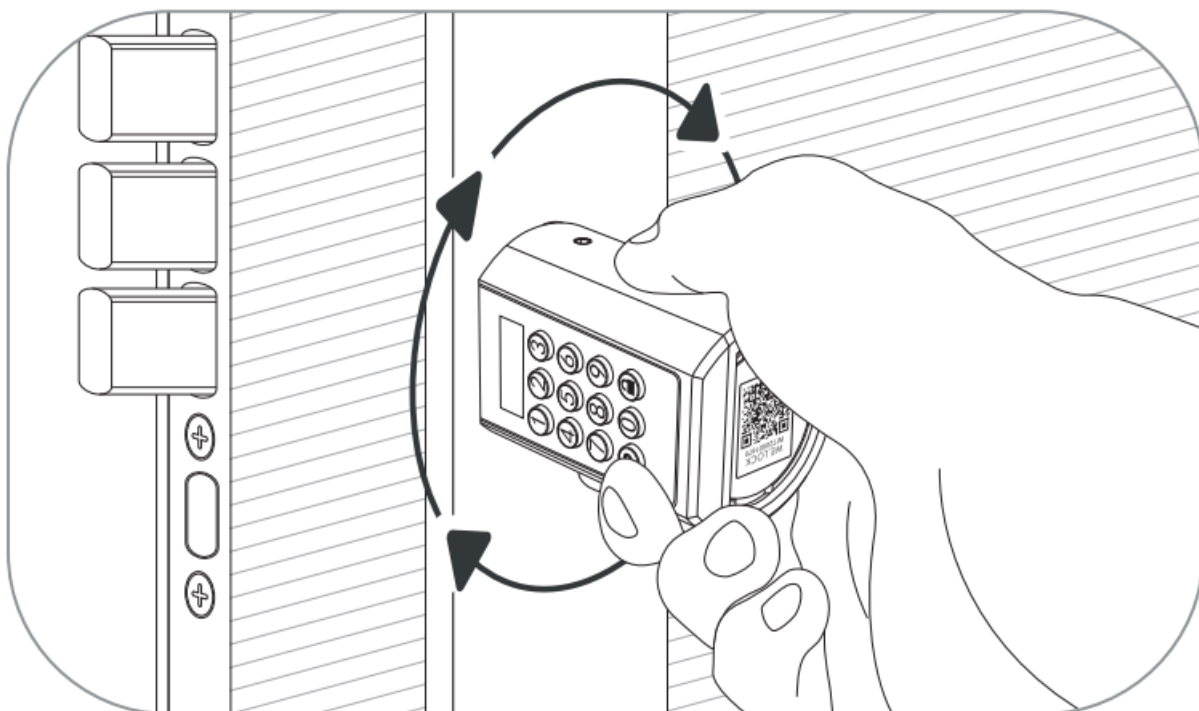
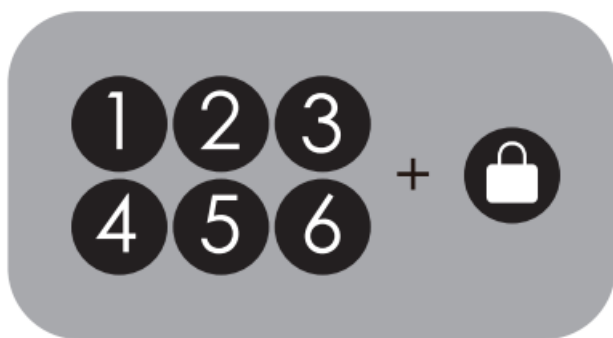
Unlock and lock

Unlock the door from outside

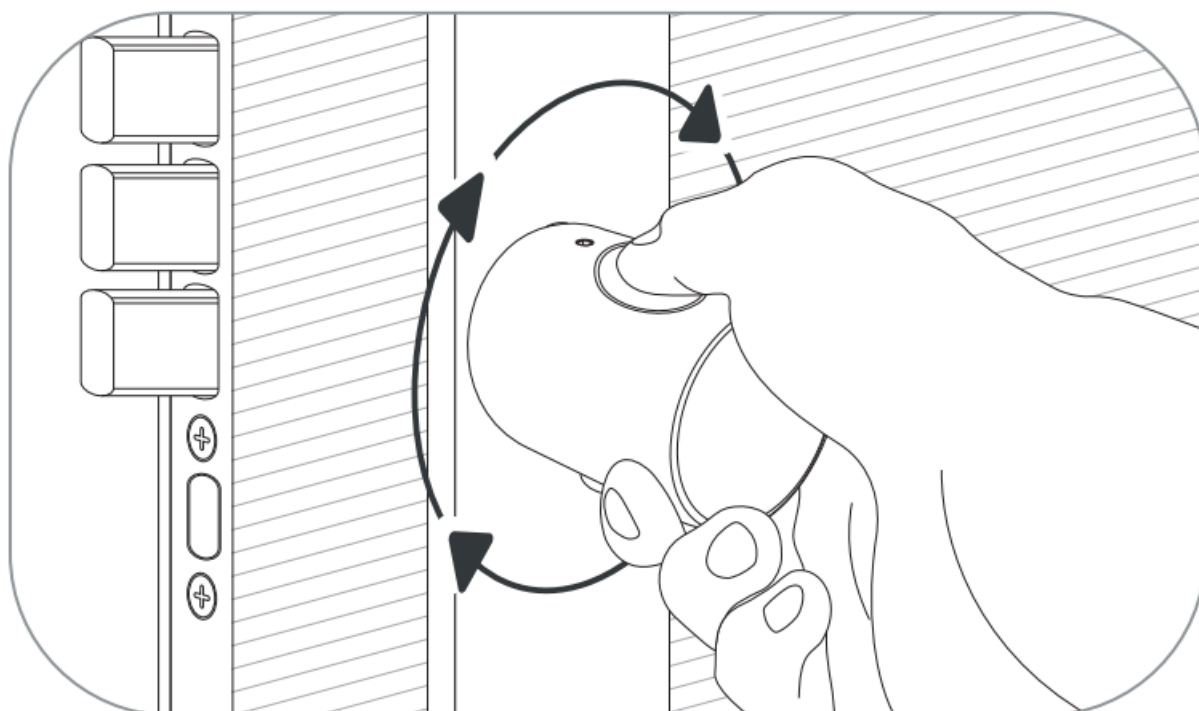
- The keyboard lights up.



- Screen shows "Unlocked, please turn on the handle."

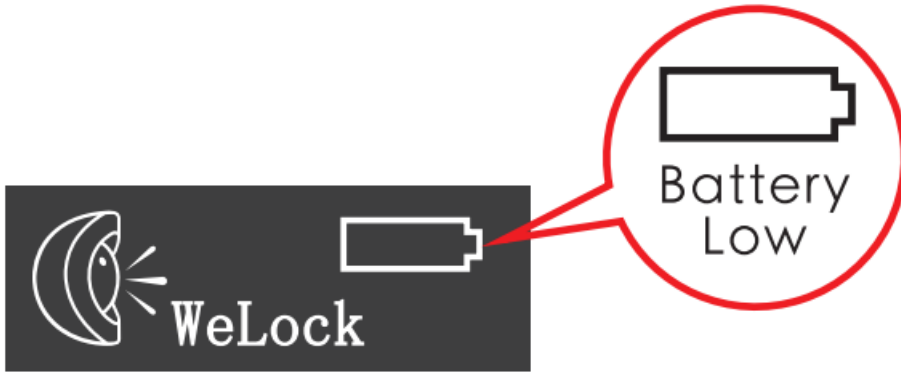


The knob can be rotated 360 degree freely after locked.
To protect the lock not be damaged by torsion forcefully.



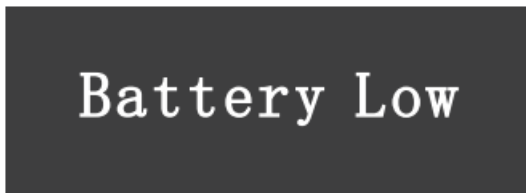
 **Low battery prompt:**

After waking up, the screen displays.



After 3 “beep beep” beeps. The screen prompts: “Battery Low”.

Please replace the battery promptly when the above message appears.



FAQ

- **What should I do when I receive the lock?**

When you received the lock, please modify the default password “123456” to your own admin password first, so please keep it in your mind.

- **Where can I find the lock ID?**

Please find the lock ID with 8 digits number on the middle of lock, or find it on packing box.

- **When will the low battery alarm?**

The battery is below 20a.

- **What is the USB backup key for?**

USB backup key is spare key, for emergency situations, like when the lock is broken or battery run out, then you can use power bank to charge the lock via USB cable, then use our app to unlock the lock.

- **How can contact customer service?**

Please contact this email:

Service@WelockGlobal.com

Bluetooth activation and login instructions

Scan the QR code on the lock

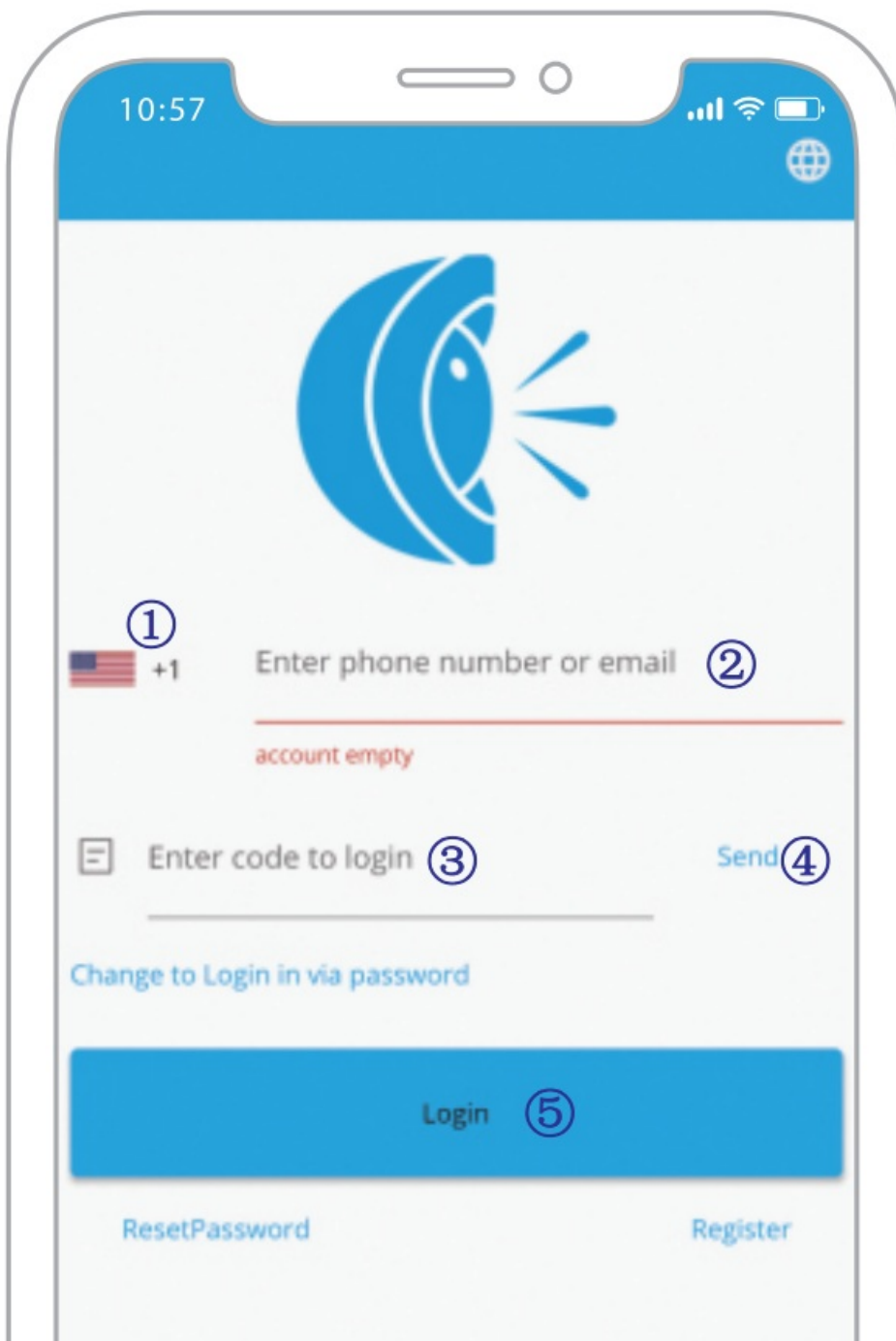


Select "Android/iOS" to download

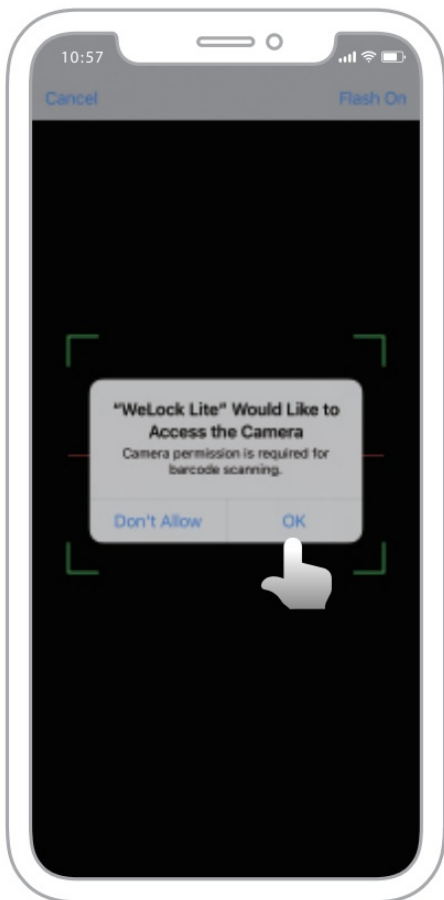
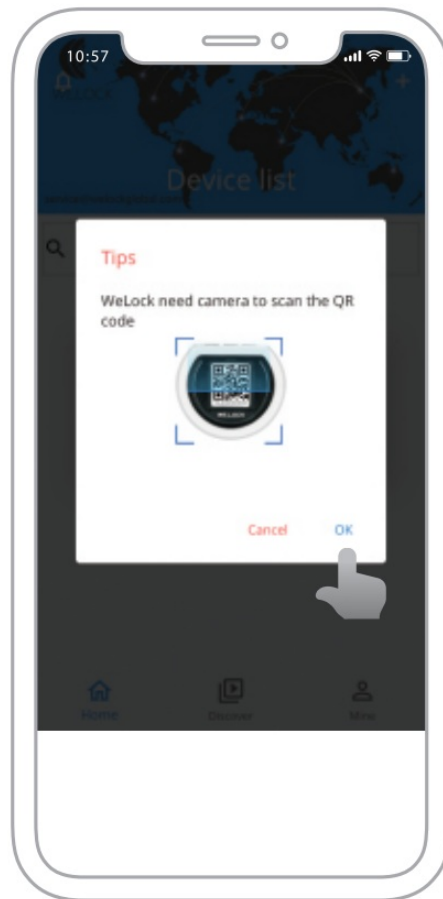
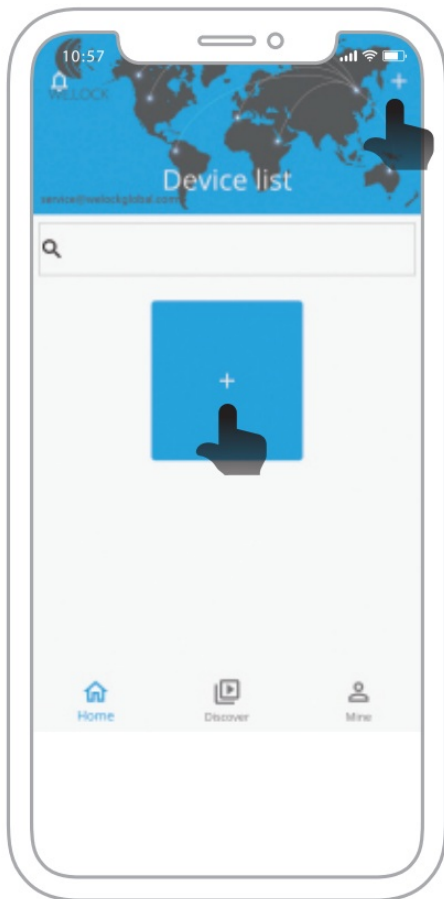


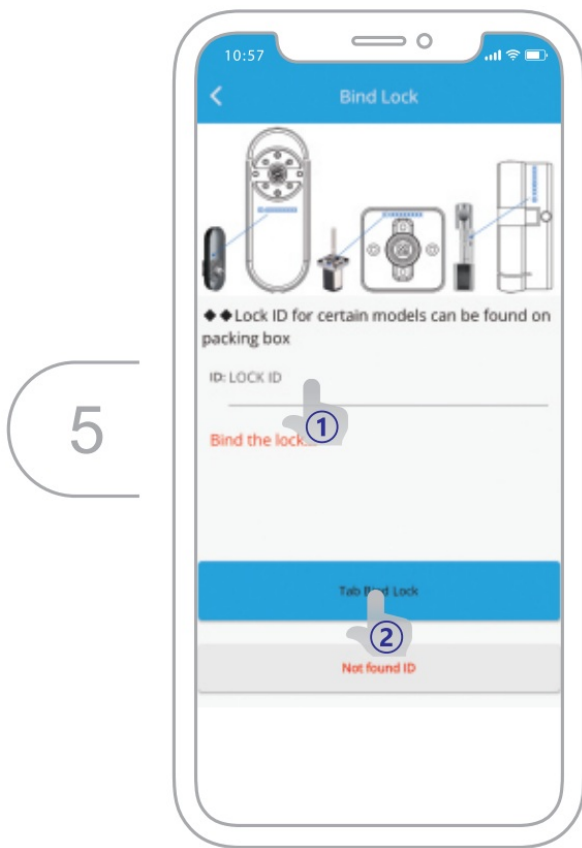
Log in to the app

1. Select your country/region
2. Enter the phone number/email to get the verification code
3. Click "Send"
4. Enter the verification code after receiving the message
5. Click "Login"



Bind the device







Specifications

Brand	WE.LOCK
Applicable door types	Wooden doors, Interior doors
Adjustable range	50-100 mm
Operating Temperature	-25°C – 60°C
Pressing Cycle Times	100,000 Times
Material of handle	Zine Alloy
Way to unlock	Passcode / IC card / Bluetooth
Battery Type	3*AAA Battery
Power input	4V-6V
Battery Replacement	Replaceable
Color	Silver
Battery Life	>1 year

Operating instruction

1. Enter the wrong passcode 5 times continuously . the system is locked for three minutes and cannot operate.
2. Press  to wake up the keyboard+10 digits temporary passcode Enter the wrong passcode 5 times continuously, the system is locked for three minutes and the cannot operate.
Temporary passcode generation needs to be donein the App.

The time on the screen should be the same as the time on the phone, otherwise the temporary passcode will be invalid.

3. Press  to wake up the keyboard+ swipe the IC cards

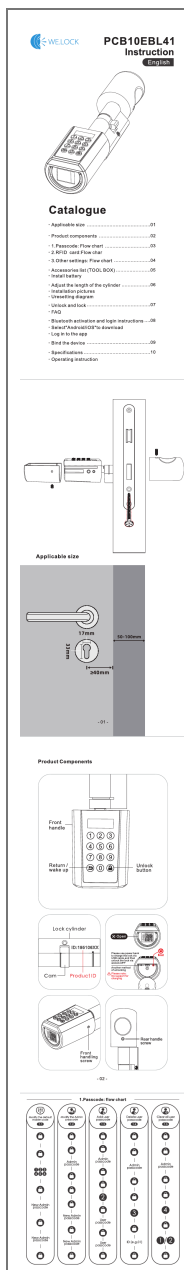
Swipe the unmatched card 5 times continuously, the system is locked for three minutes and the cannot operate.
Any IC card can unlock the door in factory state.

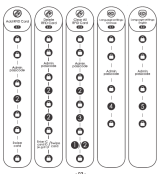
4. Bind the lock on APP

Bind the lock on APP via Bluetooth, click “unlock” , and the phone time will be synchronized to the lock via Bluetooth.

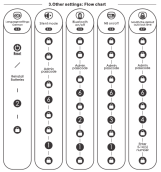


Documents / Resources





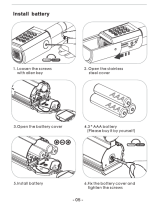
-01-



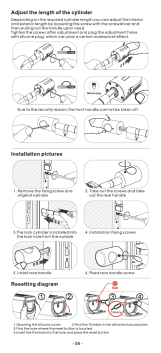
-02-



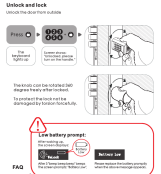
-03-



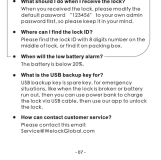
-04-



-05-



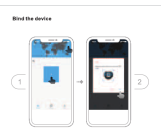
-06-



-07-



-08-



[WE LOCK PCB10EBL41 Password Bluetooth Smart Door Lock](#) [pdf] Instructions
PCB10EBL41 Password Bluetooth Smart Door Lock, PCB10EBL41, PCB10EBL41 Door Lock,
Password Bluetooth Smart Door Lock, Bluetooth Smart Door Lock, Password Smart Door Lock,
Smart Door Lock, Door Lock, Smart Lock, Lock



- 98 -

Specifications

Brand	WELLOCK
Application Area Type	Access door, cabinet door
Maximum weight	20 kg/cm
Operating Temperature	-20°C ~ 40°C
Working Cycle Time	100000 times
Installation method	Draw Alkey
Pin Lock Control	Removable, Control Removable
Release Type	Push button
Power Cord	400 g/0
Access Method/Control	Removable
Color	Black
Material/Size	17 gauge

Operating Instruction

- 1) Enter the wrong password 3 times continuously, the system is locked for 30 seconds and cannot operate.
- 2) Press the white pin the keypad or 0 digit temporarily removed. After the wrong password 3 times continuously, the system is locked for 30 seconds and the control operates. Wrong password operation needs to be done for 30 seconds. If the pin is not entered in 30 seconds, the system will be locked for 30 seconds. If the wrong password is entered, the system will be locked.
- 3) Press the white pin the keypad or 0 digit temporarily removed. After the wrong password 3 times continuously, the system is locked for 30 seconds and the control operates. Any 30 seconds after the wrong password is entered, the system will be locked.
- 4) Press the lock on APP via Bluetooth, click "unlock" and the phone will be unlocked for the lock via Bluetooth.

- 10 -