




[Home](#) » [Support](#) » **Wavytalk JDL-320N4 3-in-1 Curling Wand Set User Manual** 

Contents [[hide](#)]

- [1 Wavytalk JDL-320N4 3-in-1 Curling Wand Set](#)
- [2 INTRODUCTION](#)
- [3 SPECIFICATIONS](#)
- [4 WHAT'S IN THE BOX](#)
- [5 FEATURES](#)
- [6 SETUP GUIDE](#)
- [7 CARE & MAINTENANCE](#)
- [8 TROUBLESHOOTING](#)
- [9 PROS & CONS](#)
- [10 WARRANTY](#)
- [11 FREQUENTLY ASKED QUESTIONS](#)
- [12 References](#)

WAVYTALK

Wavytalk JDL-320N4 3-in-1 Curling Wand Set



INTRODUCTION

The retail price of the Wavytalk JDL-320N4 3-in-1 dual voltage curling wand set is about **\$37.99 USD**. A 1.5-inch heated round brush, a 1-inch curling iron, and a 1-inch flat iron/curler are all combined into one little tool in this travel-friendly styling set. With two heat settings, it provides steady heat for efficient styling while reducing damage, thanks to PTC and ceramic technology. The device has an anti-scald design and ceramic coating as built-in safety features, and it heats up in around 30 seconds. Users give it high marks for value and adaptability; it provides salon-quality curls, volume, and straightening while on the go. Customers claim that it's a great multifunctional hair item that offers shine and smoothness at a reasonable cost.

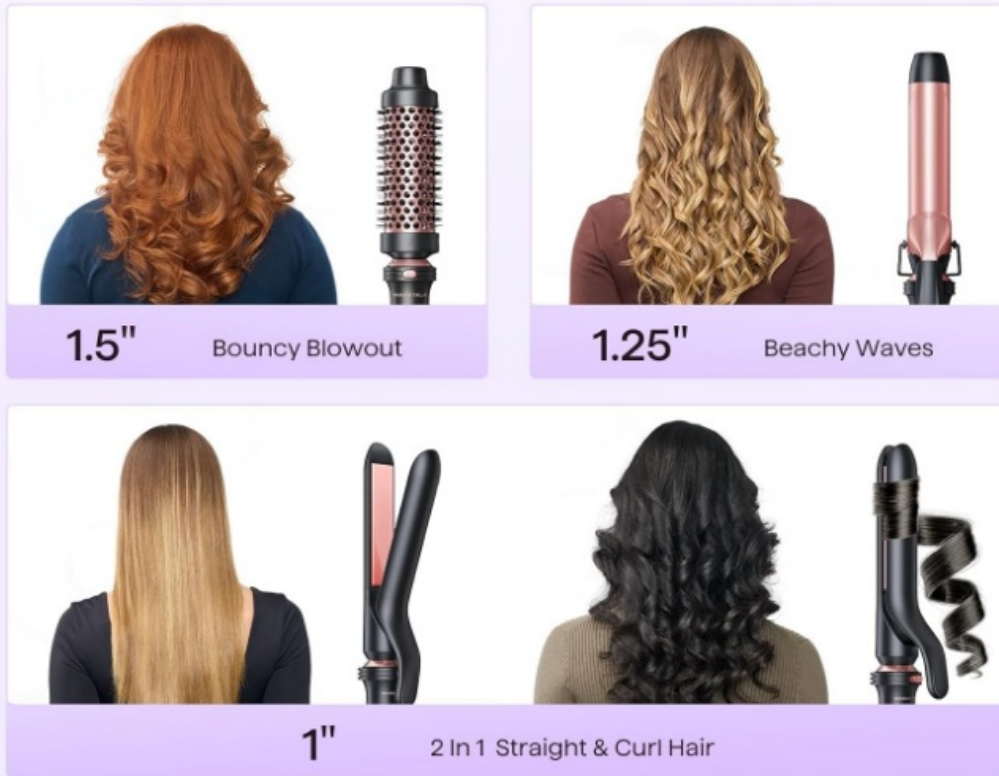
SPECIFICATIONS

Brand	Wavytalk
-------	----------

Model	JDL-320N4 (Multi Curl 3-in-1 Curling Wand Set)
Price	~\$37.99 USD
Voltage	Dual: 110–240V (automatic dual-voltage for travel)
Power	Approx. 68W
Heating tech	PTC + ceramic technology
Attachments included	1.5" thermal brush, 1¼" curling wand, 1" flat iron curler
Temperature settings	2 heat levels (exact degrees unspecified)
Heat-up time	~30 seconds
Material	Ceramic-coated barrels and bristles
Safety features	Anti-scald tip, ceramic heatsure, dual voltage
Weight	~10.4oz (~0.65lb)
Model launch date	February 11, 2025

VERSATILE STYLING

for Every Mood



WHAT'S IN THE BOX

- Wand handle/base unit
- 1.5" heated round thermal brush attachment
- 1¼" curling wand
- 1" flat-iron curler attachment
- Manual

FEATURES

- **3-in-1 Design:** Works as a brush, curling wand, and flat iron in one compact tool.
- **Global Voltage Compatibility:** Dual-voltage (110–240V) lets you use it internationally.
- **Smooth Styling:** Ceramic-coated barrels glide through hair with less friction.
- **Consistent Heat:** PTC heating technology ensures quick, even temperature across all attachments.

- **Heat Settings:** Two temperature levels to suit different hair needs.
- **Fast Warm-Up:** Heats up in about 30 seconds so you're ready to style quickly.
- **Lightweight Build:** Weighs around 10.4 oz, easy to handle for extended use.
- **Safety Tip:** Attachments feature cool-touch tips to prevent burns.
- **Quick Switch:** Heads lock in securely with a simple click-in mechanism.
- **Frizz Control:** Ceramic heating helps reduce static and add shine.
- **Great for Travel:** Compact size makes it a convenient carry-on tool.
- **Multiple Styles:** Volumize, curl, or straighten with a single device.
- **Hair Type Friendly:** Designed to work well on all textures and thicknesses.
- **Cost Efficient:** Saves money compared to buying three separate tools.
- **Highly Rated:** Users praise its ease of use and styling flexibility.



SETUP GUIDE

- **Inspect Contents:** Open the box and check all parts are intact.

- **Attach Head:** Choose the styling head you want and click it into place.
- **Plug In:** Use any compatible outlet (110–240V).
- **Power On:** Switch it on and choose your preferred heat level.
- **Wait Briefly:** Give it about 30 seconds to reach full heat.
- **Section Hair:** Divide hair into small, manageable pieces.
- **Style with Brush:** Use the 1.5" thermal brush for root-to-tip volume.
- **Curl with Wand:** Wrap hair around the 1¼" wand and hold for a few seconds.
- **Straighten Hair:** Clamp 1-inch strands using the flat iron head.
- **Set Curls:** Let curls cool before touching for lasting hold.
- **Power Down:** Turn off and unplug after use.
- **Detach Head:** Remove the styling head for cleaning.
- **Clean Gently:** Clear away any loose hair from barrels or bristles.
- **Wipe Down:** Use a dry cloth to clean surfaces before storing.
- **Store Properly:** Keep it in a cool, dry place until next use.

CARE & MAINTENANCE

- **Cool Before Cleaning:** Unplug and let the tool fully cool down first.
- **Hair Removal:** Take off any hair from brushes or barrels after use.
- **Clean Surfaces:** Wipe ceramic parts with a soft, dry cloth.
- **Avoid Water:** Never submerge the tool in liquid.
- **No Harsh Cleaners:** Steer clear of abrasive cleaning agents.
- **Check for Damage:** Inspect barrels for signs of cracking or wear over time.
- **Separate Storage:** If possible, store the base and heads individually.
- **Cord Care:** Keep the power cord neatly coiled and free of tangles.
- **Avoid Strain:** Don't bend or twist the cord sharply.
- **Use on Clean Hair:** For best results, style dry, product-free hair.
- **Give It Breaks:** Let the tool rest between long styling sessions.
- **Gentle Attachment:** Don't force styling heads on or off.
- **Replace If Needed:** Swap out attachments if the ceramic coating wears down.
- **Cool Before Wrapping Cord:** Never wrap the cord while the tool is still hot.

TROUBLESHOOTING

Issue	Possible Cause	Suggested Fix
Won't heat	Not plugged into dual-voltage properly	Check power outlet and voltage handling
Heat seems weak	Device limited to two heat settings	Use on smaller section or pre-dry hair
Hair snagging on bristles	Hair or product build-up on brush	Clean brush and detangle hair beforehand
Curls don't hold	Not held long enough to cool	Hold curl for 10–20 seconds
Stops working mid-use	Internal overheating or manufacturing fault	Let cool, then restart or contact support
Base not recognizing parts	Attachment not fully clicked in	Reseat head until it clicks
Not suitable for very thick hair	Low wattage might not maintain heat	Use slower brush strokes or smaller sections
Limited styling options	Only three attachments included	Consider complementary tools if needed
Attachment looseness	Wear or damage to connector	Replace worn attachment
Inconsistent feedback	Mixed user reports on heat level/functionality	Evaluate rating/comments before extended use

PROS & CONS

Pros

- Exceptional value—a single tool with three attachments
- Dual-voltage makes it travel-friendly
- Lightweight and easy to handle

- Great for at-home blowouts, volume, and light curl/straightening
- Ceramic/PTC heat gives smoother, shinier results

Cons

- Only two heat levels—may not suit thick or coarse hair
- Not as powerful as standalone curling irons or straighteners
- Some users report the thermal brush stops heating after months
- Lacks additional attachments such as micro wand or gloves
- Heat may feel insufficient for very dense hair types

WARRANTY

Details on the manufacturer warranty are limited in public listings. Wavytalk typically offers a **1-year warranty and a 30-day return guarantee**, per their website policies. Check included packaging or their official support channels for precise coverage terms.

FREQUENTLY ASKED QUESTIONS

How many styling tools are included in the Wavytalk JDL-320N4 3-in-1 Curling Wand Set?

The set includes a 1.5-inch heated round brush, a 1-1/4 inch curling iron, and a 2-in-1 flat iron & curler offering three tools for multiple styling needs.

Does the Wavytalk JDL-320N4 Curling Set reduce heat damage?

Absolutely. It uses ceramic and PTC heating technology to ensure even heat distribution, reducing damage while enhancing shine.

What is the wattage of the Wavytalk JDL-320N4 model?

It operates at 68 watts, offering quick heat-up and consistent styling performance.

What temperature settings are available on the Wavytalk JDL-320N4?

It features 2 temperature levels, allowing users to choose based on their hair type and desired style.

Why is my Wavytalk JDL-320N4 not heating up?

Ensure the power cord is securely connected, the temperature setting is selected, and the outlet is functional. If the issue persists, contact Wavytalk support.

Why does the Wavytalk JDL-320N4 keep turning off during use?


It may be overheating or have a faulty connection. Unplug and let it cool. If the problem continues, seek assistance or consider a replacement.

What should I do if my hair gets stuck in the Wavytalk JDL-320N4 heated round brush?

Power off the tool and gently unwind your hair. Avoid pulling forcefully. Always section your hair properly before using the brush.

References

- [User Manual](#)

 3-in-1 Curling Wand Set, B0DWSK5JYM, JDL-320N4, user manual, Wavytalk, Wavytalk JDL-320N4

Leave a comment

Your email address will not be published. Required fields are marked *

Comment *

Name

Email

Website

☐ Save my name, email, and website in this browser for the next time I comment.

Post Comment

Search:

e.g. whirlpool wrf535swhz

Search

[Manuals+](#) | [Upload](#) | [Deep Search](#) | [Privacy Policy](#) | [@manuals.plus](#) | [YouTube](#)

This website is an independent publication and is neither affiliated with nor endorsed by any of the trademark owners. The "Bluetooth®" word mark and logos are registered trademarks owned by Bluetooth SIG, Inc. The "Wi-Fi®" word mark and logos are registered trademarks owned by the Wi-Fi Alliance. Any use of these marks on this website does not imply any affiliation with or endorsement.