



wavlink WS-UG69PD8 Pro USB-C Quad Display Universal Dock User Guide

[Home](#) » [WavLink](#) » wavlink WS-UG69PD8 Pro USB-C Quad Display Universal Dock User Guide 

wavlink WS-UG69PD8 Pro USB-C Quad Display Universal Dock User Guide



Contents

- [1 Safety Instructions](#)
- [2 Copyright Statement](#)
- [3 Disclaimer](#)
- [4 WEEE Directive & Product Disposal](#)
- [5 Overview](#)
- [6 System requirement](#)
- [7 In the box](#)
- [8 Features](#)
- [9 Connect your laptop to the dock](#)
- [10 How to set up](#)
- [11 Supported resolution list](#)
- [12 Display settings](#)
- [13 FAQ](#)
- [14 Documents / Resources](#)
- [15 Related Posts](#)

Safety Instructions

Keep this Quick Start Guide for future reference.

Keep this equipment away from humidity.

If any of the following situation arises, get the equipment checked by a service technician:

- The equipment has been exposed to moisture.
- The equipment has been dropped and damaged.
- The equipment has obvious sign of breakage.
- The equipment has not been working well or you cannot get it work according to Quick Start Guide

Copyright Statement

No part of this publication may be reproduced in any form by any means without the prior written permission. Regardless of any direct acknowledgment elsewhere in the body of this document, WAVLINK hereby acknowledges that all trademarks, registered trademarks, service marks, and other protected names and/or symbols contained in this manual and related documents are the property of their respective holders.

Disclaimer

Information in this document is subject to change without notice. The manufacturer does not make any representations or warranties (implied or otherwise) regarding the accuracy and completeness of this document and shall in no event be liable for any loss of profit or any commercial damage, including but not limited to special, incidental, consequential, or other damage.

WEEE Directive & Product Disposal

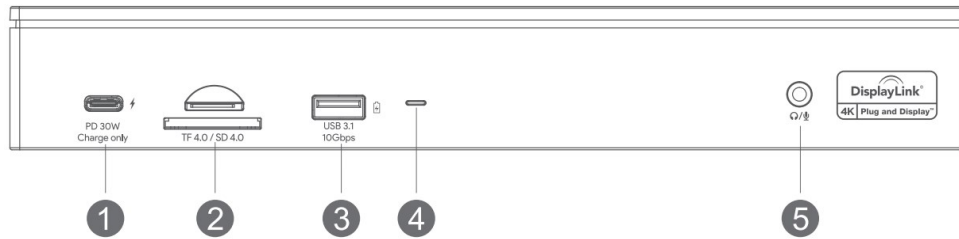


At the end of its serviceable life, this product should not be treated as household or general waste. It should be

handed over to the applicable collection point for the recycling of electrical and electronic equipment, or returned to the supplier for disposal.

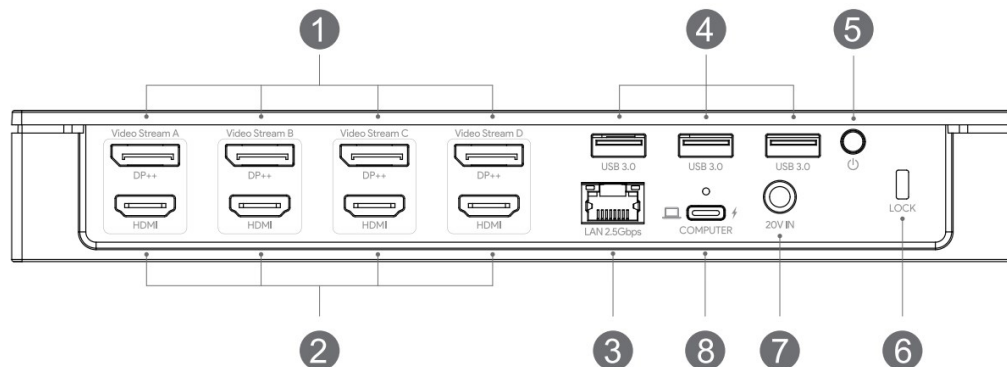
Overview

Front



1. USB-C (PD 30W)
2. USB-A (10Gbps)
3. SD/TF card slot
4. Power LED
5. Audio/Mic port

Back



1. 4 x DisplayPort
2. 4 x HDMI port
3. 2.5G Ethernet port
4. USB-A(5Gbps)
5. Power switch
6. Security lock
7. DC in (20V/9A 180W)
8. USB-C (host; PD 100W)

System requirement

- Microsoft Windows 7/8/8.1/10 (32/64-bit)
- Mac OS X 10.8/11 or later (MI)

In the box

- 1x USB-C Quad Display 4K@60Hz Universal Dock
- 1x 2-in-1 USB-C to USB-C Cable with USB-A Converter
- 1x DC20V/9A 180W Power Adapter
- 1x AC Power Cable
- 1x Cable Holder
- 1x Quick Start Guide

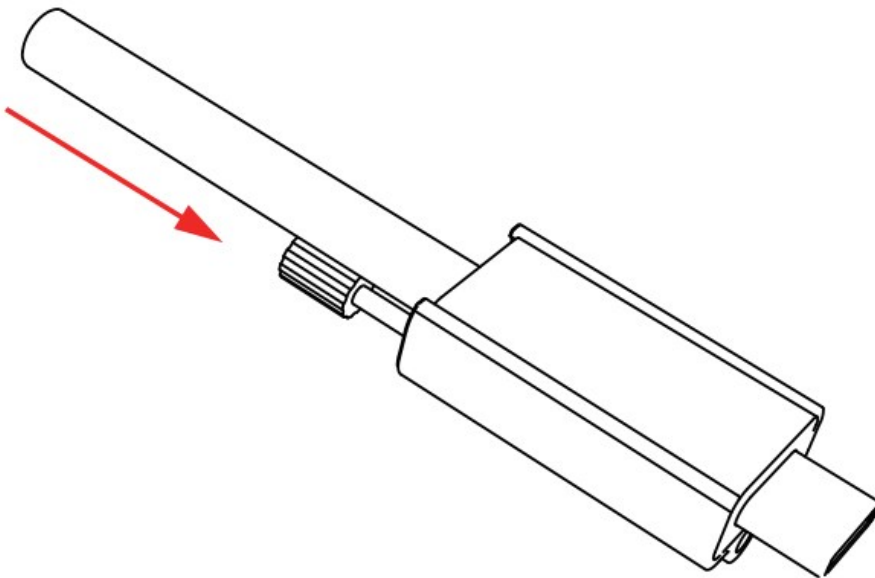
Features

1. Four sets of HDMI/DP ports support quad-display up to 4K@60Hz.
2. The USB-C (host) charges your laptop with max.100W power.
3. The new generation 2.5G ethernet port supports 2.5Gbps.
4. The USB3.1 port on the front side supports BC1.2 fast charging and max 10Gbps data transmission.
5. Integrated SD V4.0 Card Reader with SD/Micro SD slot supports UHS-II theoretical bus speed up to 312MB/s.
6. The USB-C port on the front side supports 30W PD charging for any device that complies with USB PD charging.

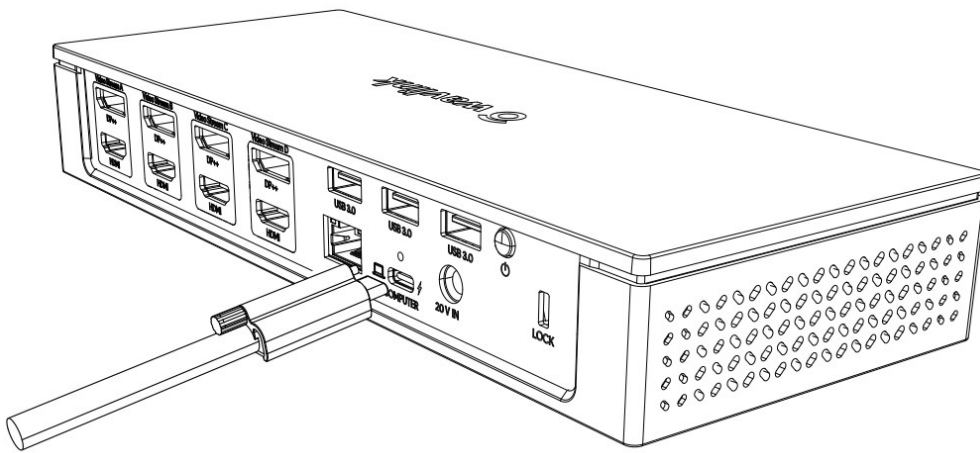
Connect your laptop to the dock

If you are worried that the cable might loosen, herein please follow the steps to install the cable holder.

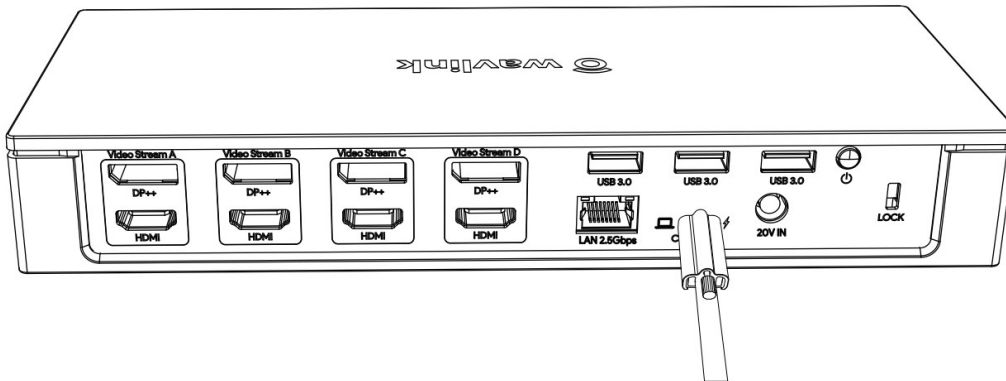
1. Insert the cable into the cable holder according to the arrow direction shown in the following picture:



2. Align the bolt with the fixing hole then connect it to the host Type-C port:



3. Lastly, please fasten the bolt and fix the connectivity between the cable and the dock:



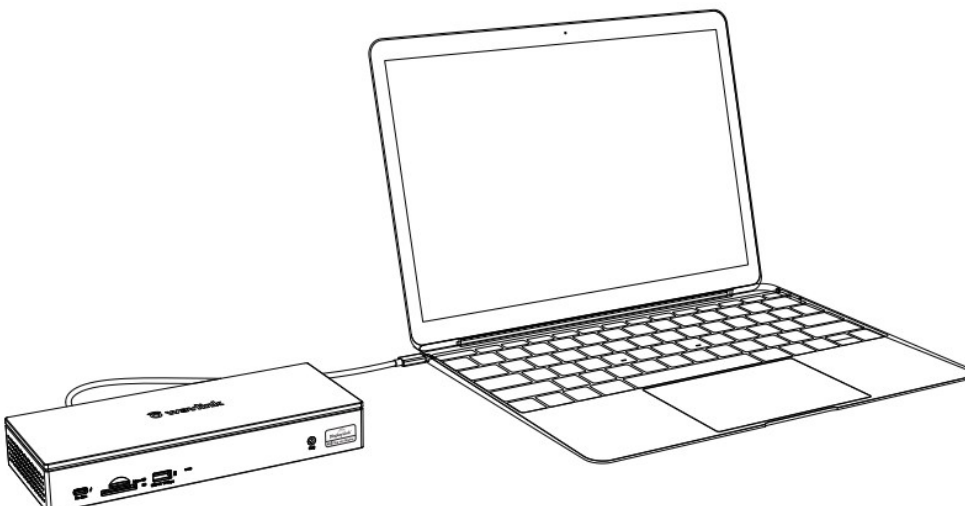
Note:

1. The USB-C (host) port charges your laptop with maximum 100W power.
2. Before you start to use this product, please visit www.wavlink.com and filter by "Support" > "Driver" > "USB Docking" > "WL-UG69PD8 Pro" and download the corresponding driver for the dock (the driver installation instruction is included in the file).

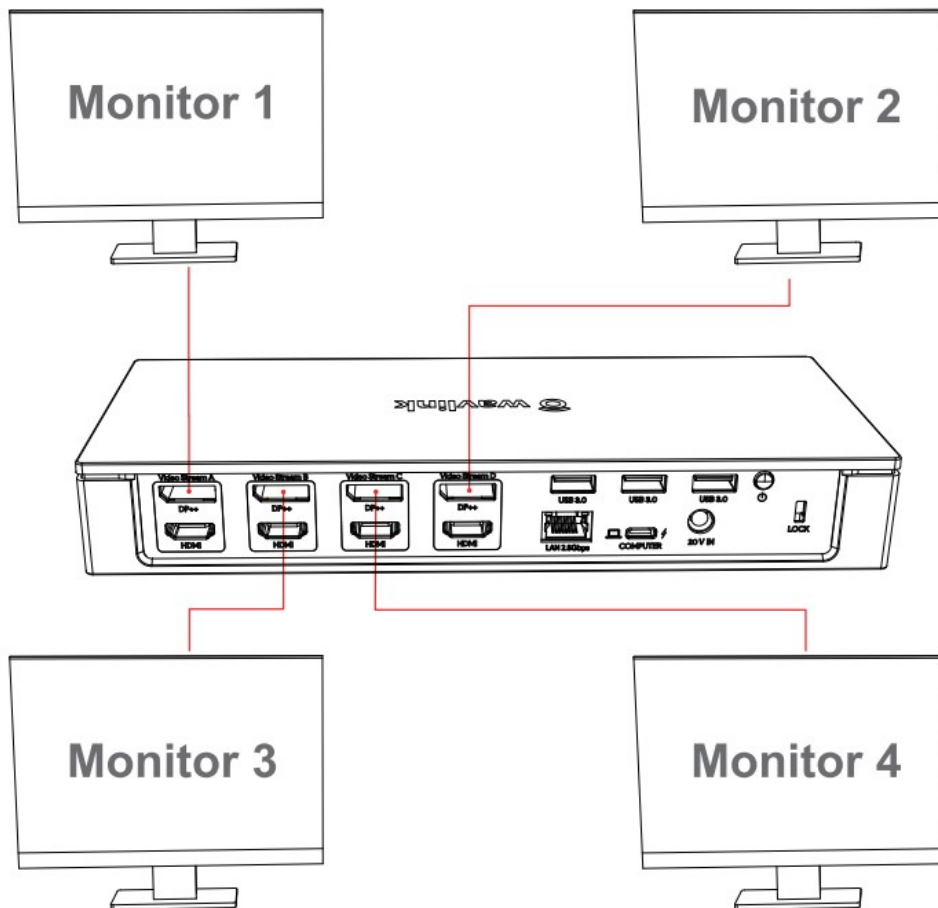
How to set up

To extend external monitors, please do as follows:

1. Connect the USB-C port (host) to your laptop.



2. The dock connects up to four external monitors.

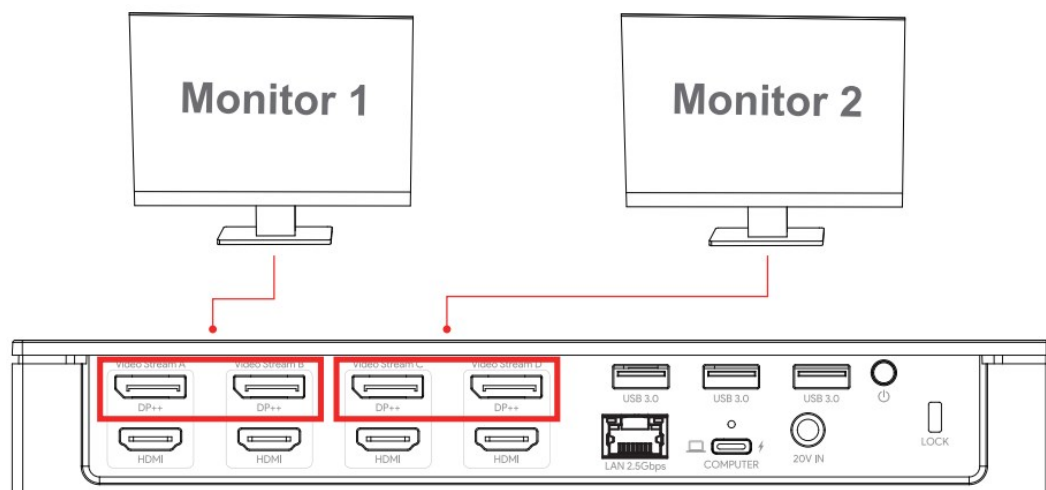


Note:

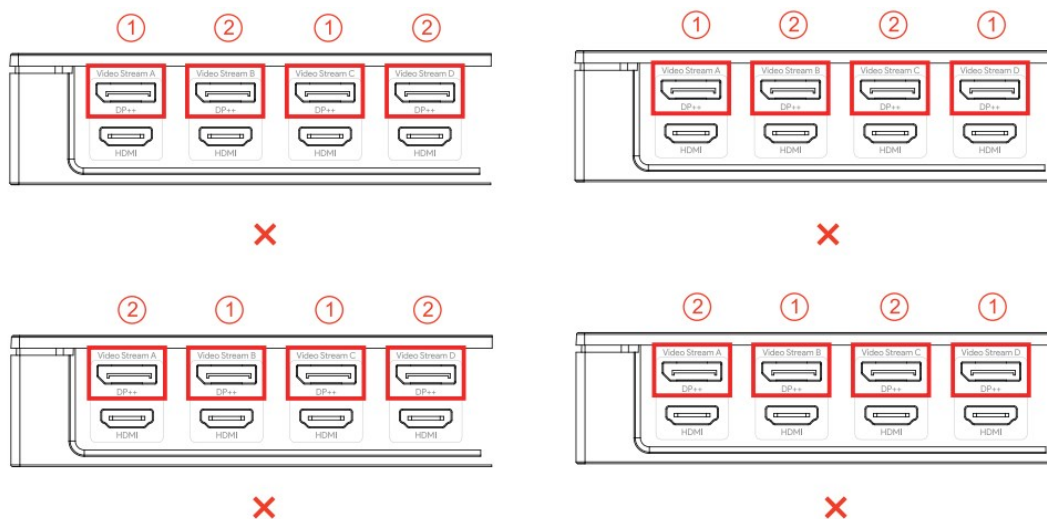
(In each video stream group you can only use one port, thus, quad-display out of four groups)

5K Display

Correct way to connect 5K monitors.



Wrong ways to connect 5K monitors



Note:

You can only either connect the left two DP ports or right Mo, you cannot interconnect them randomly. If you're not sure how to do this, please check the picture above for reference.

Supported resolution list

1. When using one set of video stream:

Group	Interface	5K 5120×1440 P60	4K 3840×2160 P60	2K 2560×1600 P60 2560×1440 P60	1K FHD
Video Stream A (or B or C or D)	HDMI	X	√	√	√
	DP++	√			

Note:

If you plug in both HDMI and DP within the same video stream, DP will be working, HDMI will not.

2.

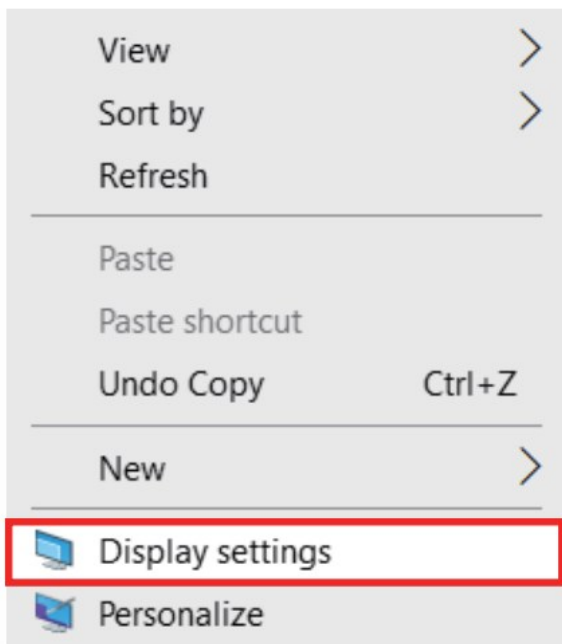
3. When using multiple sets of video streams:

Group	Interface	5K 5120×2880 P60	4K 3840×2160 P60	2K 2560×1600 P60 2560×1440 P60	1K FHD
Video Stream A	HDMI				
	DP++				
				r' L	
Video Stream B	DP++ HDMI		-V		
Video Stream C	HDMI				
	DP++				
Video Stream D	DP++				
	HDMI				

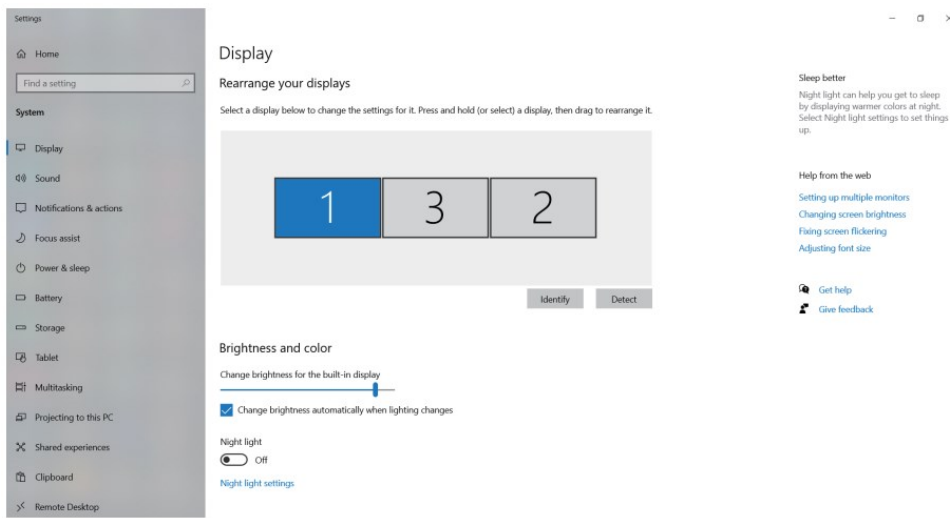
Display settings

For Windows

1. Right-click→Display settings

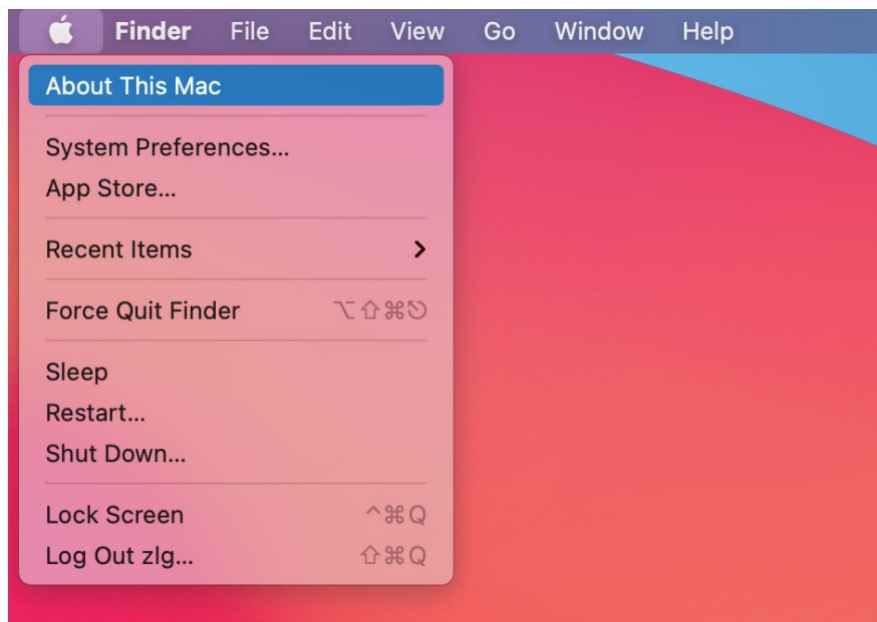


2. After entering "Display settings", enjoy different operations of duplicating, extending and rotating on your monitors!

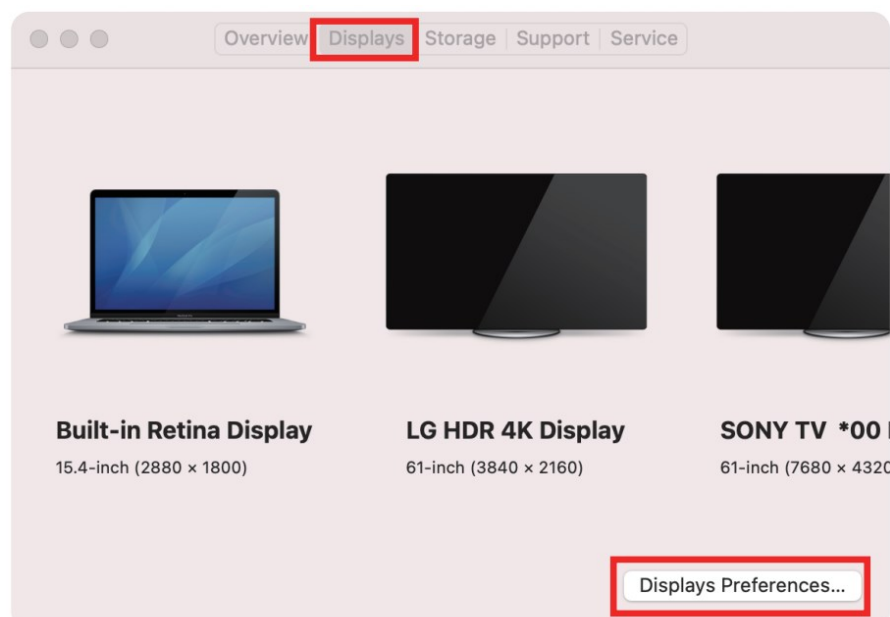


For Mac OS

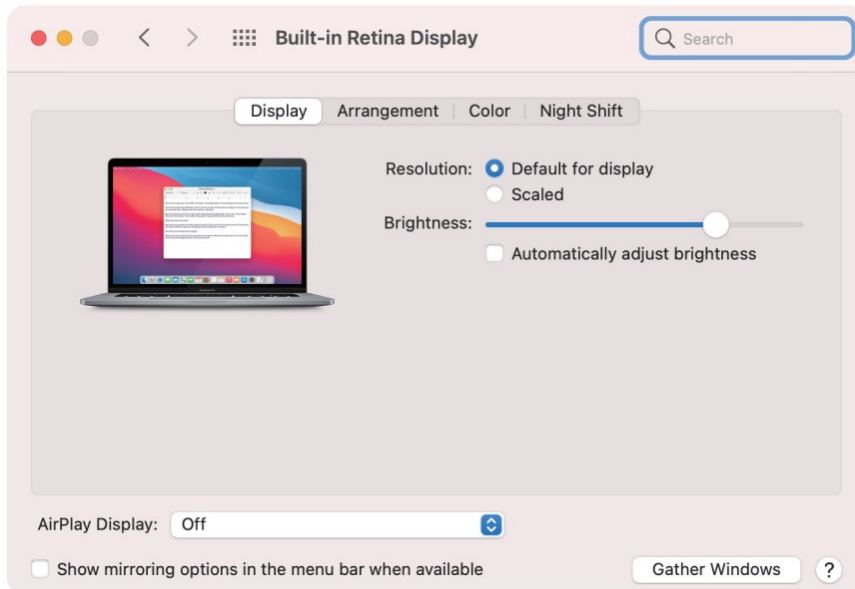
1. Please connect the docking station to the laptop and monitor Apple icon-->About This Mac



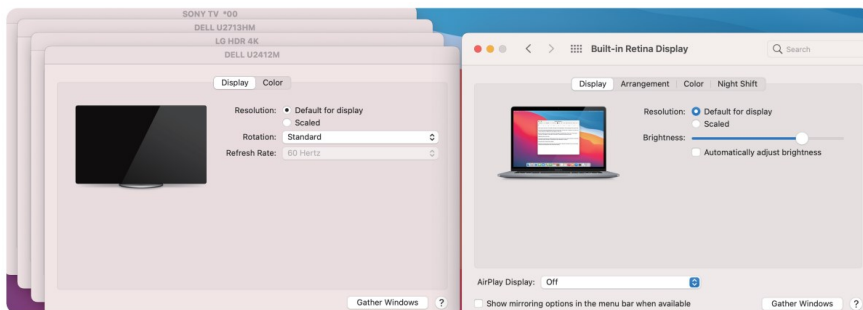
2. Displays-->Displays Preferences



3. Enjoy different operations of mirroring, expanding and rotating on your monitors!



4. Or click “Gather Windows” to gather all connected displays and make separate settings.



FAQ

Q: Why does my dock get hot when I use it?

A: This is what it's supposed to be like when the dock is working, don't worry about the heat. But we suggest that you put the dock in a relatively open area for a better heat dissipation.

Q: Why is there no display after I connect the dock to the USB-C port of my laptop?

A: Please make sure that your laptop is the latest version, and you have installed the latest displaylink driver. At last, please check if the Type-C port of your laptop port supports data transmission.

Q: Does this dock support octa-display?

A: No, it doesn't. The dock supports maximum 4 monitors with either video port of each set.




Thank you for purchasing WAVLINK product!

WAVLINK(@WavlinkOfficial)

WAVLINKSUPPORT@WavlinkTechSupport

Documents / Resources

	wavlink WS-UG69PD8 Pro USB-C Quad Display Universal Dock [pdf] User Guide WS-UG69PD8 Pro USB-C Quad Display Universal Dock, WS-UG69PD8 Pro, USB-C Quad Display Universal Dock, Display Universal Dock, Universal Dock, Dock
---	--

[Manuals+](#).