



WAVLINK UMD03 USB-C Triple Display Docking Station User Guide

[Home](#) » [WavLink](#) » WAVLINK UMD03 USB-C Triple Display Docking Station User Guide 



QUICK START GUIDE USB-C Triple Display Docking Station



www.wavlink.com/en_us/WL-UMD03

scan the QR code or load the link for
Quick Start Guide and Driver downloading
WL-UMD03



WAVLINK (@WavlinkOfficial)
WAVLINK SUPPORT (@WavlinkTechSupport)

Contents

1 UMD03 USB-C Triple Display Docking Station
2 Introduction
3 Feature
4 Overview
5 System Requirement
6 Single Display
7 Dual Display
8 Triple Display
9 Installation
10 Display Mode Setting
11 Q & A
12 Documents / Resources
12.1 References

UMD03 USB-C Triple Display Docking Station

Safety Instructions

Always read the safety instructions carefully.

Keep this Quick Start Guide for future reference.

Keep this equipment away from humidity.

If any of the following situation arises, get the equipment checked by a service technician:

- The equipment has been exposed to moisture.
- The equipment has been dropped and damaged.
- The equipment has obvious sign of breakage.
- The equipment has not been working well or you cannot get it work according to Quick Start Guide.

Copyright Statement

No part of this publication may be reproduced in any form by any means without the prior written permission.

Other trademarks or brand names mentioned herein are trademarks or registered trademarks of their respective companies.

Disclaimer

Information in this document is subject to change without notice. The manufacturer does not make any representations or warranties (implied or otherwise) regarding the accuracy and completeness of this document and shall in no event be liable for any loss of profit or any commercial damage, including but not limited to special, incidental, consequential, or other damage.

WEEE Directive & Product Disposal



At the end of its serviceable life, this product should not be treated as household or general waste. It should be handed over to the applicable collection point for the 'mmm reCYCling of electrical and electronic equipment, or returned to the supplier for disposal.

Introduction

This dock is built in a slim, light, and miniature case, it is designed to meet more demands of extra USB peripherals and monitors. To extend the content of your AV sources, you can select either one of three video interfaces: VGA, HDMI, and DisplayPort.

Besides, you can also connect your laptop to the upstream USB-C port and get it charged. The dock also provides you four USB interfaces to enable you to enjoy high-speed data transfer.

Feature

USB Power Delivery

The upstream USB-C port is compliant with USB power delivery specification revision 3.0 and supports up to 100W power supply.

including max. 85W PD charging to laptop.

USB Data Transmission

The MST dock has two USB 3.0 and two USB 2.0 ports, providing your devices plenty of connection possibilities.

US 3.0 provides data transfer rate up to 5Gbps.

Triple Display

This MST dock has 3 different video ports, you can either select one port or combine two or all three of them for your own need.

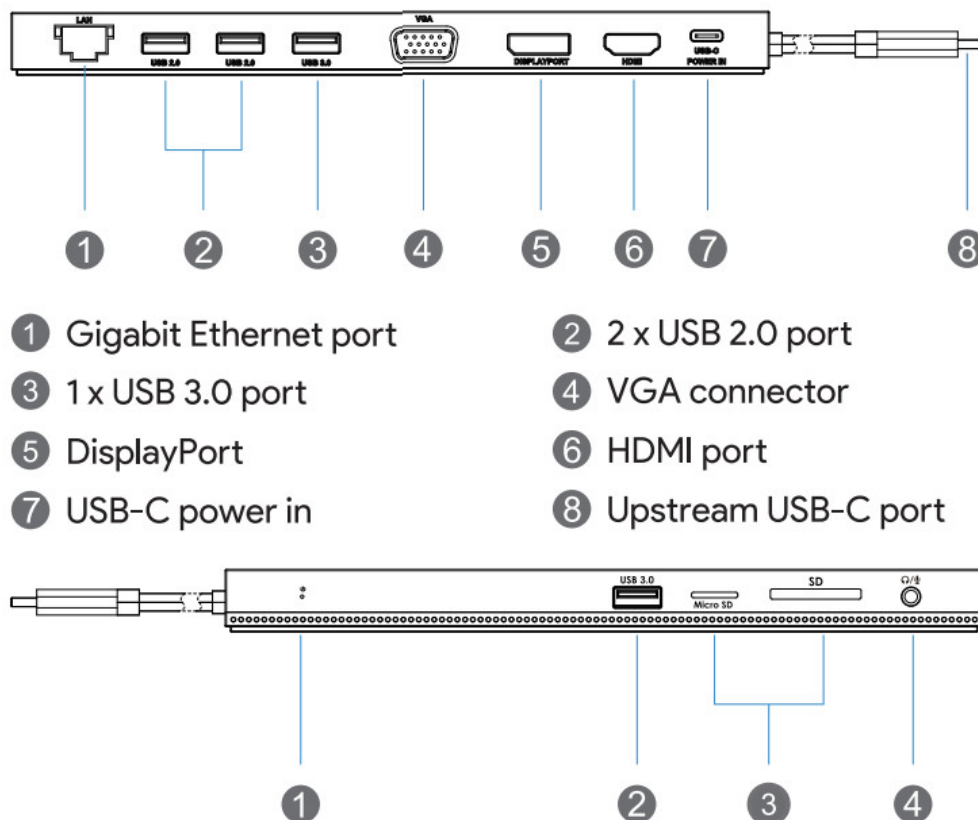
RJ45 Gigabit Ethernet

Gigabit Ethernet port provides a high-speed network and is backward compatible with 10/100Mbps networks.

SD/TF Card Reader

Support SDV2.0/SDHC(Up to 32GB), compatible with SDXC(Up to 2TB).

Overview



1. LED indication
2. 1xUSB 3.0 port
3. SD & micro SD card reader
4. 1x combo audio port

*SD/TF Card Reader slot cannot be used simultaneously.

System Requirement

- Windows 7/8/10 or later
- Mac OS X or later
- CPU I7 or higher, RAM 4GB or above
- Requires that host PC/laptop supports PD 2.0
- PC/laptop with USB 31 full function Type-C port
(Power Delivery, Video Alternate, Data Transfer)

Single Display

Video Port		DP	HDMI	VGA
DP version of P C/laptop	DP 1.2	3840 x 2160@30Hz	3840 x 2160@30Hz	1920 x 1080@60Hz
MacOS	Mirror	✓	✓	✓
	Extended	✓	✓	✓
Win 10	Mirror	✓	✓	✓
	Extended	✓	✓	✓

Dual Display

Video Port		DP + HDMI	DP + VGA	HDMI + VGA
DP version of P C/laptop	DP 1.2	1920 x 1080@60Hz	1920 x 1080@60Hz	1920 x 1080@60Hz
MacOS	Mirror	✓	VGA incompatible	VGA incompatible
	Extended			
Win 10	Mirror	✓	✓	✓
	Extended	✓	✓	✓

*VGA port is not available for MacOS based laptops/PCs.

Triple Display

Video Port		DP + HDMI + VGA		
DP version of P C/laptop	DP 1.2	1600 x 900@60Hz	1600 x 900@60Hz	1600 x 900@60Hz
MacOS	Mirror	✓	✓	VGA incompatible
	Extended			
Win 10	Mirror	✓	✓	✓
	Extended	✓	✓	✓

*VGA is not available for MacOS based laptops/PCs.

Installation

Before using this dock, please make sure that the latest PC/laptop drivers are installed (including USB, graphics card etc) because the network port needs specific drivers.

For Windows 10, the system detects and automatically installs them after the dock is connected to the network. If drivers cannot be automatically installed, the network port can't perform properly. Please install them manually. For MAC OS system, you need to install the network port driver manually, please visit www.wavlink.com > Support > Driver > PC peripherals > USB Docking.

1. Connect the USB-C connector of the dock to your host laptop/PC, the LED light on the dock will turn blue.
2. Connect your monitor(s) to video ports of the dock then you can proceed to configure the display modes.

Remarks for Windows based PC/laptops:

1. Before you connect two or three monitors, we suggest you lower monitor resolution, please check Q3 for details.
2. Before you connect three monitors, we suggest you disconnect laptop/PC first, please check Q2 for details.

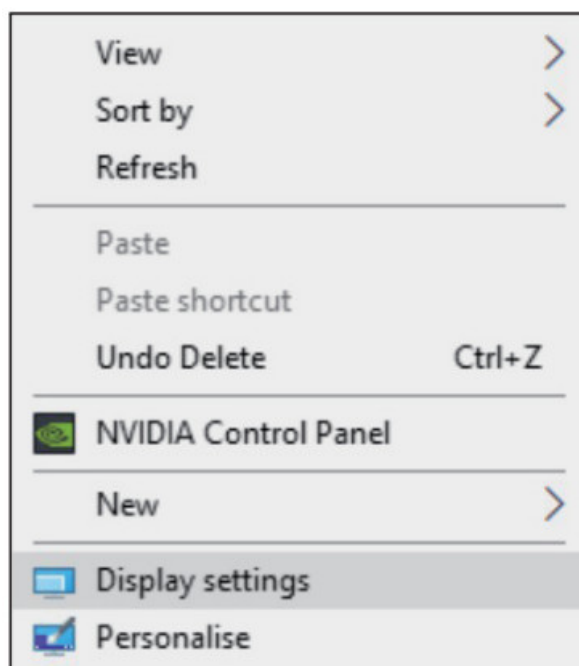
Remarks for Mac based PC/laptops:

1. When you connect only one external monitor to the dock, the extend and duplicate modes are both available.
2. If you have two or three monitors connected to the dock, then you can only extend to one monitor while the other one or two monitor(s) will copy the same content on your extended monitor.

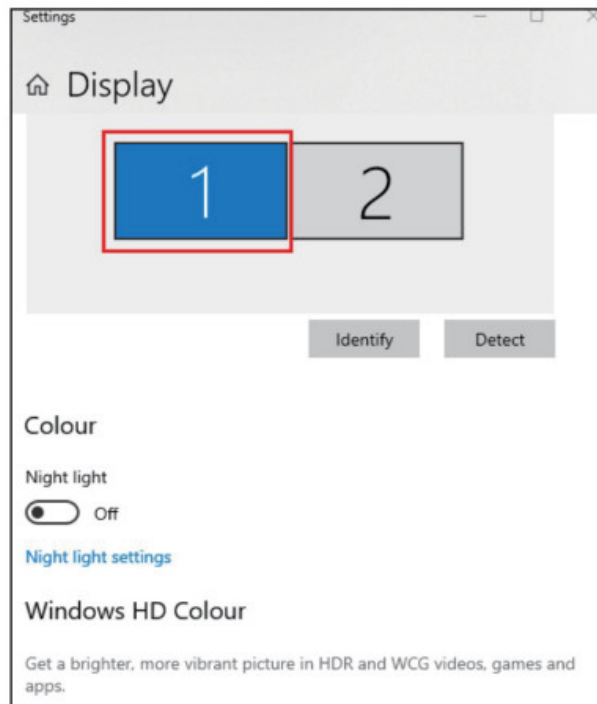
Display Mode Setting

For Windows Users

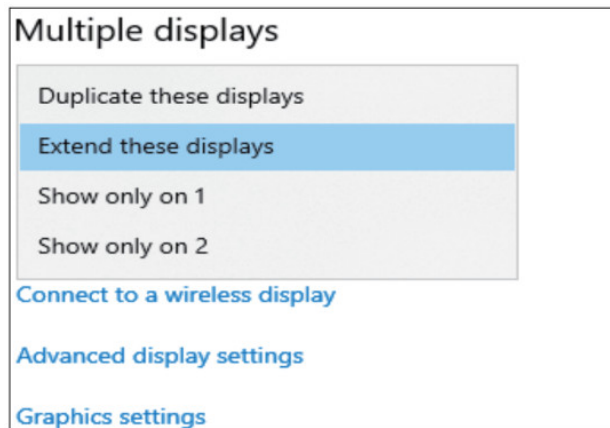
1. Right-click at any spot on your desktop and select "Display settings".



2. On "Display", please select either monitor 1 or monitor 2.

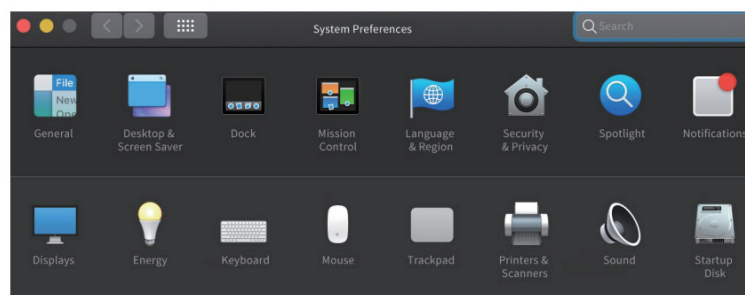


3. Scroll down to the “Multiple displays”, and select the mode in the drop-down list that fits for your need.

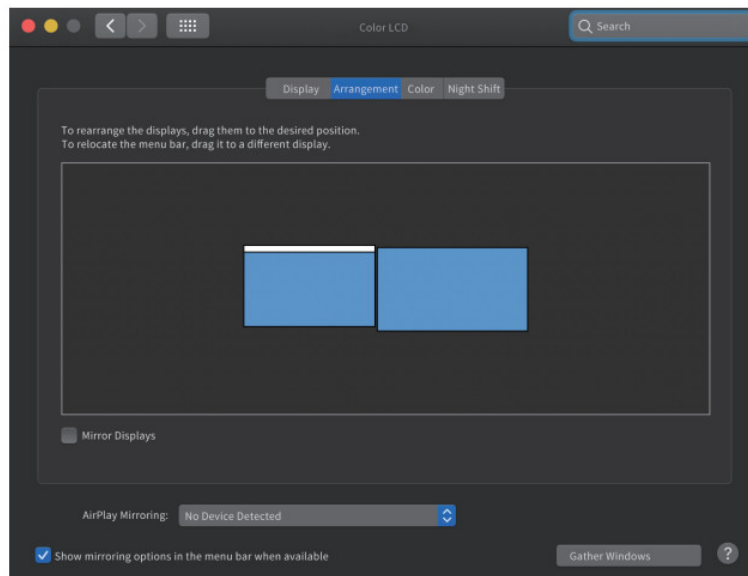


For MacOS Users

1. Select “System Preferences” and choose “Displays”.

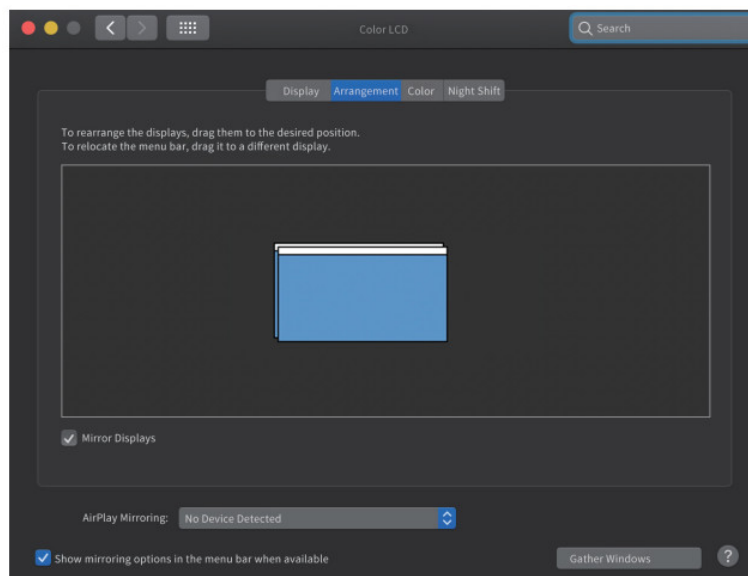


2. Click on “Arrangement” to change the position of displays currently connected.



Extended Mode

3. Select either extend or mirror mode on your demand.

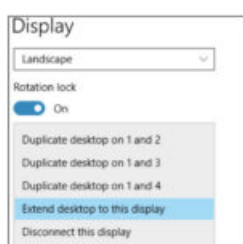


Mirror Mode

Q & A

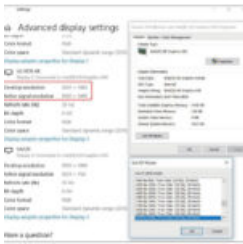
Q1. How to figure out the maximum resolution (DP1.2/DP1.4) my laptop supports?

Q2. Why doesn't my third monitor display when I set the triple display mode?



2. Step 1: Choose the main display 1. Right-click to select “Display settings”. 2. Choose a monitor display and scroll down to “Multiple displays

3: Why are my 2K and 4K monitor display abnormal when I set dual or triple display mode?



A3, The resolution of some branded monitors cannot be adjusted automatically, the “Active signal resolution” of which is different from Windows setting “Desktop resolution”, hence you better set the resolution at the same value. 1. Right-click and select “Display settings”. 2. Select your monitor display and click on i, then scroll down to select “advanced settings”. 3. Checkif resolution values of each monitor on “Desktop. resolution” and “Active signal resolution” are the same. 4.Click on “Display adapter properties for Display 2

Q4. Why does it show “slow charging” on my laptop?

A4, Some users may notice that the charging status shows “slow charging”, this is because some series of laptop have protection protocol, especially laptops that have both Thunderbolt 3 port and over 100W external DC power adapter. Please solve it by using laptop provided an external power adapter to charge.

Q5. What is High Dynamic Range (HDR)?

A5, High Dynamic Range (HDR) creates much more lifelike experiences by allowing bright objects such as lights and highlights glinting off shiny objects to be displayed much more brightly than other objects in the scene. HDR also allows for more details in dark scenes. True HDR playback is not yet available on the built-in displays of laptops and tablets, many of TVs and PC monitors start to build in HDR-10 with HDCP2.2 to support. Some of the key HDR ccontent sources today are « Streaming HDR (e.g. YouTube*) & Streaming premium HDR (e.g. Netflix*) « Local HDR Video Files « ULTRA HD Blu-ray* « HDR games// « HDR content creation apps

Also, if you need to stream HDR contents with applications like Netflix and YouTube, make sure in Windows 10 “Stream HDR Video” setting is “on” in the ‘Video playback’settings page.

Notice:


When using on an Apple computer with an M1 chip, there s no sound output from the Displayport interface, and subsequent OS updates may solve this problem.

Official website: www.waviink.com

Technical support: support@wavlink.com



Documents / Resources

	WAVLINK UMD03 USB-C Triple Display Docking Station [pdf] User Guide UMD03 USB-C Triple Display Docking Station, UMD03, USB-C Triple Display Docking Station, Triple Display Docking Station, Display Docking Station, Docking Station, Station
---	---

References

- [User Manual](#)