

 **WAVESHARE**
share awesome hardware
WAVESHARE
LPCI-COM485-8
ACCES I/O
Distributor and
Integrator



WAVESHARE LPCI-COM485-8 ACCES I/O Distributor and Integrator Owner's Manual

[Home](#) » [WAVESHARE](#) » WAVESHARE LPCI-COM485-8 ACCES I/O Distributor and Integrator Owner's Manual 

Contents

- [1 WAVESHARE LPCI-COM485-8 ACCES I/O Distributor and Integrator](#)
- [2 Product Information](#)
- [3 Product Usage Instructions](#)
- [4 Introduction](#)
- [5 Configuration](#)
- [6 FAQ](#)
- [7 Documents / Resources](#)
 - [7.1 References](#)
- [8 Related Posts](#)



WAVESHARE LPCI-COM485-8 ACCES I/O Distributor and Integrator

Modbus Relay Setting

1. Access the webpage and go to APP SETTING > System Event settings > Modbus.
2. Select TCP for Transport, set Host and Port settings.
3. For Waveshare Modbus POE ETH Relay, Device Address is fixed at 0x01.
4. Default IP: 192.168.1.200, Port: 4196.
5. Configure Function, Start Address, ON, and OFF values accordingly.
6. Use Refresh button to check Relay status and test ON/OFF functionality.

FAQ (Frequently Asked Questions)

Q: Can I use a different brand of Modbus POE ETH Relay with the AIBOX?

A: The manual specifically mentions compatibility with Waveshare Modbus POE ETH Relay models. Using a different brand may require additional configuration steps.

Introduction

Prerequisites

- AIBOX FW version 103719 or higher.
- TCP Modbus Relay Box Recommended Alarm Box models
- Waveshare Modbus POE ETH Rela
- Waveshare Modbus POE ETH Relay (B)
- Waveshare Modbus POE ETH Relay 30CH

Learn about integration architecture

There are two ways to integrate AIBOX out of alarm box with waveshare:

1. Case 1

You will connect the Modbus POE ETH Relay (hereinafter referred to as “Relay”) to LAN2 for use. You must assign an IP address to LAN2 on the AIBOX, and power must be supplied to the Relay device. If you assign the LAN2 IP address of the AIBOX to 192.168.1.xxx, you do not need to configure the IP on the Relay, as the default IP of the Relay is 192.168.1.200.



2. Case 2

You will connect the Relay to LAN1 for use. It must be used after setting up the router. If the router is not POE-enabled, you will need to supply additional power to the Relay and change its IP address. Since the Relay is an external device, this use case is not recommended due to security concerns.



Configuration

To integrate the AIBOX with the Waveshare Modbus POE ETH Relay, each device requires configuration. Below are the instructions for each configuration method. This manual is based on the Case1 use case. To use Case 2, additional settings for the Waveshare Modbus POE ETH Relay Device are required. Please refer to section 3.1 for the configuration.

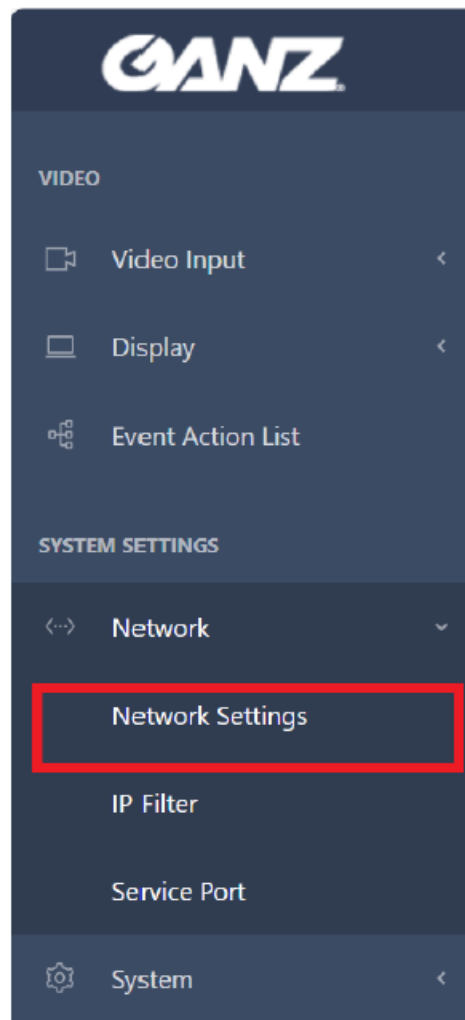
1. AIBOX

Below are the instructions for configuring the device to use Modbus equipment.

2. Network Setting

We recommend using Case 1, so you need to configure Ethernet2. Below are the instructions for setting up Ethernet2.

Access the AIBOX webpage and click on Network Setting under SYSTEM SETTING in the left menu bar.



Click on Ethernet2, then turn off DHCP and configure the IP address and Subnet Mask.

CBC (Europe) S.r.l. NOTA APPLICATIVA

Network Settings

Ethernet1

Ethernet2

Metric

IP Setup

DHCP



IP Address

192.168.1.201

Subnet Mask

255.255.255.0

Gateway

0.0.0.0

DNS 1

0.0.0.0

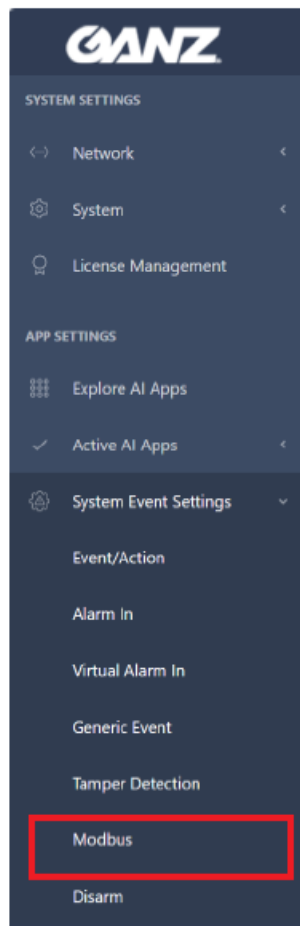
Cancel

Apply

Note. If there is no Gateway, you should not configure it separately.

Modbus Relay Setting

Access the webpage and select APP SETTING > System Event settings > Modbus from the left menu bar.



Select TCP for Transport and configure the Host and Port settings. For the Waveshare Modbus POE ETH Relay, the Device Address is fixed at 0x01.

Note. The device's default IP is 192.168.1.200, and the port is 4196.
Enter the following configuration values: For the Waveshare Modbus POE ETH Relay, the Function is fixed at 0x05, the Start Address is 0x0000, ON is 0xff00, and OFF is 0x0000.

Home / Applications / System Event Settings / Modbus

Modbus

Modbus Device

Transport

TCP

Host

192.168.1.200

Port

4196

Device Address

0x

01

Cancel

Submit

Tip. Click the Refresh button to check the current Relay status of the connected device.

Modbus Relay (20)

Download CSV

Upload CSV

Id	Name	Function	Start Address	ON	OFF	Test
1	Modbus Relay 1	0x05	0x0000	0xff00	0x0000	ON OFF
2	Modbus Relay 2	0x05	0x0001	0xff00	0x0000	ON OFF
3	Modbus Relay 3	0x05	0x0002	0xff00	0x0000	ON OFF
4	Modbus Relay 4	0x05	0x0003	0xff00	0x0000	ON OFF
5	Modbus Relay 5	0x05	0x0004	0xff00	0x0000	ON OFF
6	Modbus Relay 6	0x05	0x0005	0xff00	0x0000	ON OFF

Tip. You can set the name of the Relay you wish to use and click the ON/OFF button to test it.

Modbus Relay States

Refresh

Modbus Relay

1

2

3

4

5

6

7

8

Modbus Relay action

Below are the instructions for adding the Relay device registered in the AIBOX to the action settings.
After setting up the AI App or system events, click on Action setting and then select Add.

Modbus Relay (20)

Download CSV

Upload CSV

Id	Name	Function	Start Address	ON	OFF	Test
1	Modbus Relay 1	0x05	0x0000	0x ff00	0x 0000	ON OFF
2	Modbus Relay 2	0x05	0x 0001	0x ff00	0x 0000	ON OFF
3	Modbus Relay 3	0x05	0x 0002	0x ff00	0x 0000	ON OFF
4	Modbus Relay 4	0x05	0x 0003	0x ff00	0x 0000	ON OFF
5	Modbus Relay 5	0x05	0x 0004	0x ff00	0x 0000	ON OFF
6	Modbus Relay 6	0x05	0x 0005	0x ff00	0x 0000	ON OFF

Action Setting

Add

Action Type	Action Name	Operation
-		

Select Modbus Relay from the Action Type.

Action Setting

Action Type

Select

System

Relay

Modbus Relay

Camera Speaker

Count Reset

Network

HTTP

Cancel

Apply

Clicked 'Modbus Relay Action Add' Button.

Action Setting

Action Type Modbus Relay

Modbus Relay Action Add

Name	Operation
	-

Cancel Apply

The Index refers to which Relay of the Relay device set in section 2.2.1 you want to control. Select the desired Output Type, then click the Test button to verify its proper operation. Finally, click the Apply button to save the settings.

Modbus Relay Action Setting

Action Preset Name

Modbus Relay

Modbus Device Config

Move To Setting

Index

8

Output Type

On for Duration

5

second(s)

Test

Test

Cancel

Apply

Check the checkbox, then click the Apply button.

Action Setting

Action Type

Modbus Relay



- Check the target action you want to apply to this rule.
- You need to choose one action.

Modbus Relay Action Add

Name		Operation
<input checked="" type="checkbox"/>	Modbus Relay	

Cancel

Apply

After completing the settings, click the Submit button to apply the changes.

Cancel

Apply

After completing the settings, click the Submit button to apply the changes.

Run Rule in Disarm ☐

Schedule Setting Setting

Name	Operation
Always	

Combined Rule Add

Reference Rule / Event	NOT	Time Range	I/O Status Reference	Operation
-				

Cancel

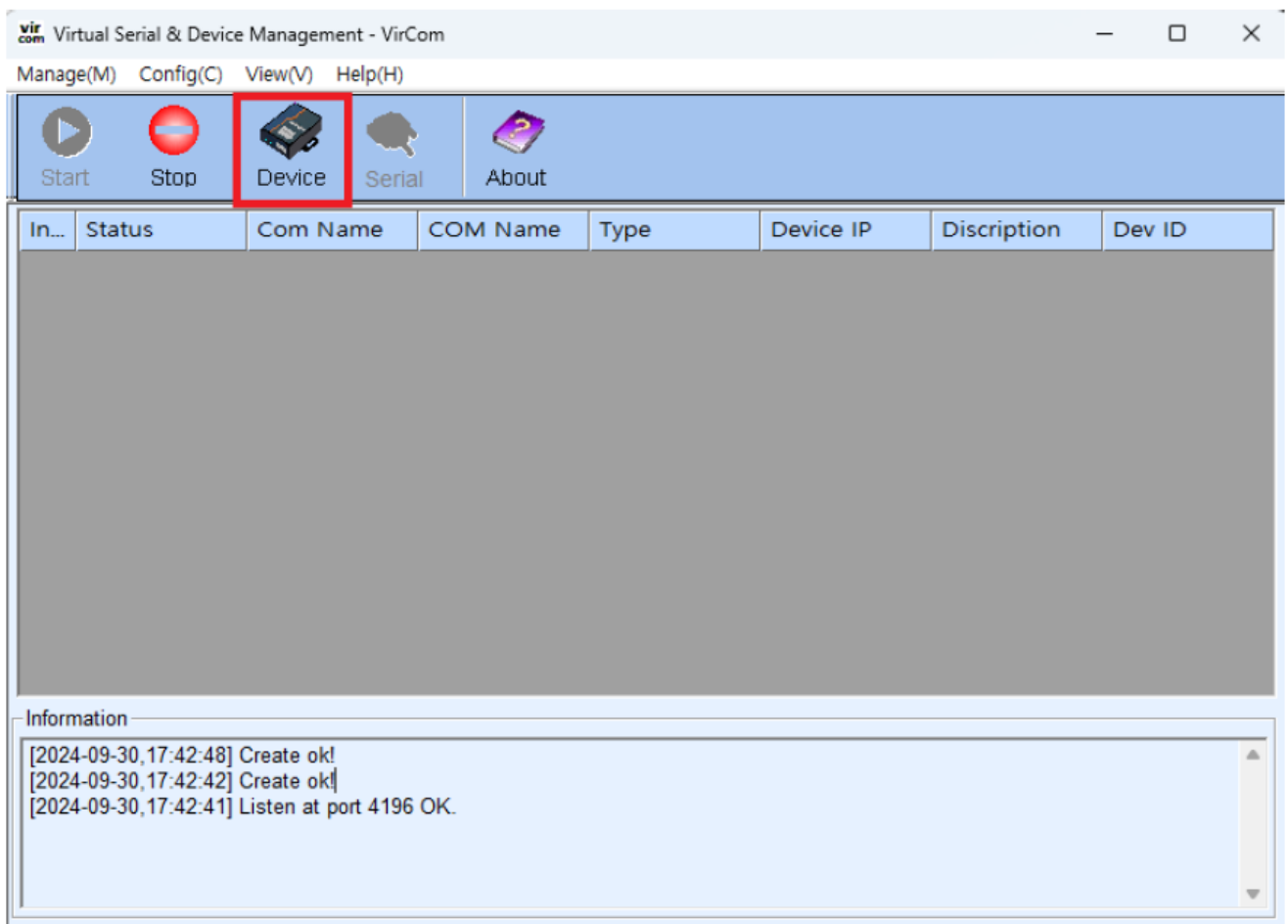
Submit

FAQ

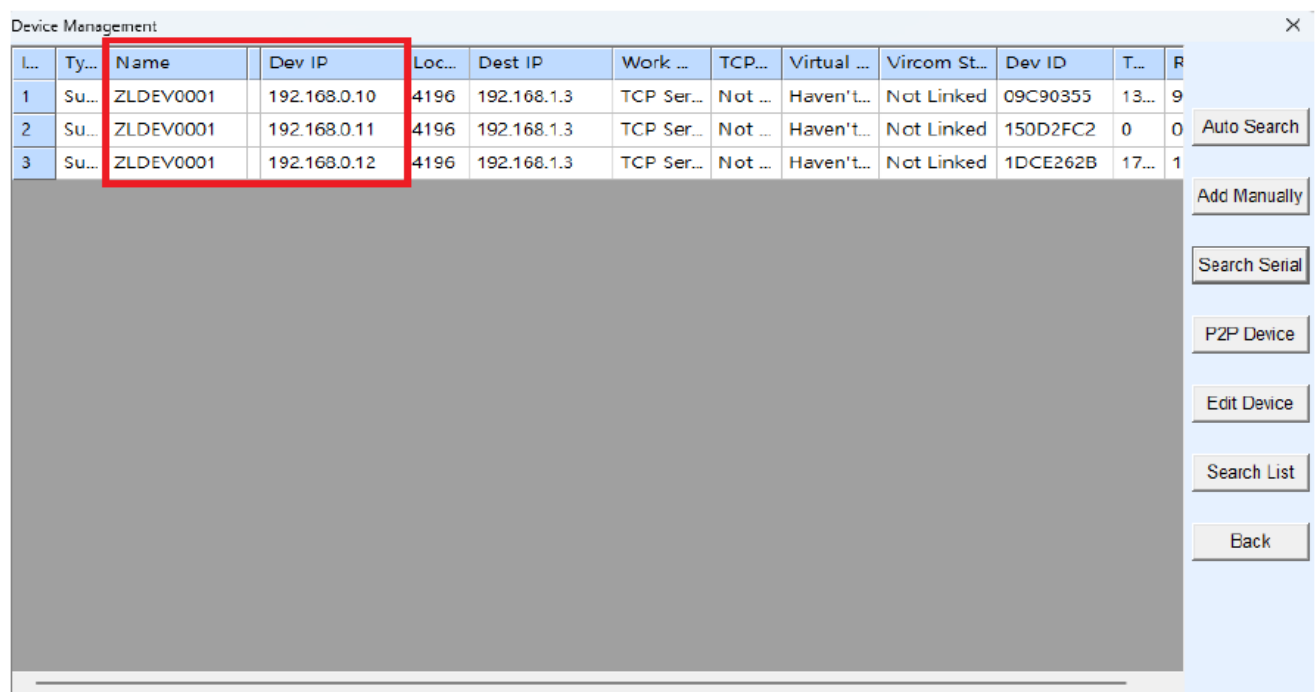
• Waveshared Modbus PEO ETH Relay Device Setting

To search for devices, please download the installation file below.

Search Device Run the file.

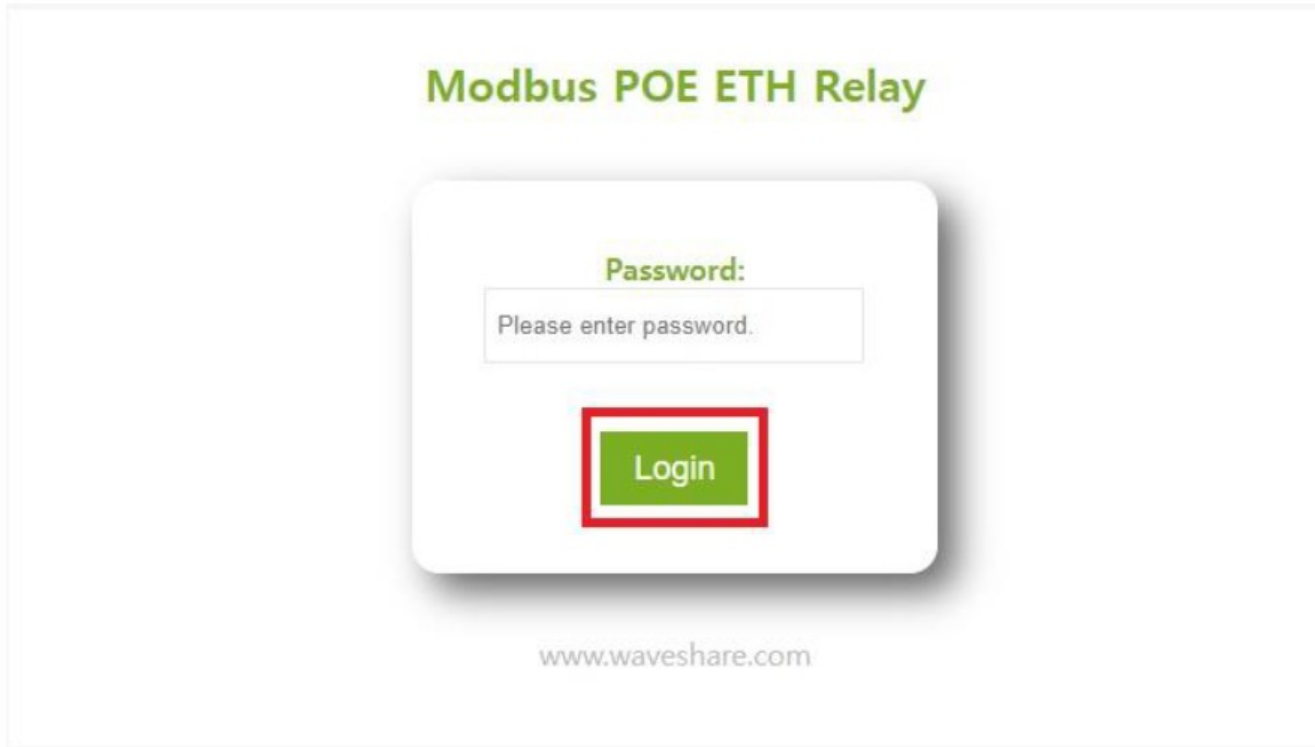


- Devices on the same network will be detected. If a device is not found, please check the network connection and the power status of the device.




- Configuration

Connect to the device you identified in section 2.1.1.



- Note. The device has no default password. You can enter any value or leave it blank to log in.
- Set the device's IP and port, and configure the work mode as TCP Server
-

 **WAVESHARE**
share awesome hardware

Logout

Chinese

Device Information

Device Name	ZLDEV0001	Firmware Version	V1. 486	Device MAC	04-EE-E8-19-03-65
-------------	-----------	------------------	---------	------------	-------------------

Network Settings

Device IP	192.168.0.10	Device Port	4196	Device Web Port	80
Work Mode	TCP Server	Subnet Mask	255.255.255.0	Gateway	192.168.1.1
Destination IP/DNS	192.168.1.3	Destination Port	4196	IP mode	Static

Serial Settings

Baud Rate	115200	Databits	8	Parity	None
Stopbits	1	Flow control	None		


Advanced Settings

No-Data-Restart	Disable	No Data Restart Time	300 5~1270 second	Reconnect-time	12 1~255 second
-----------------	---------	----------------------	----------------------	----------------	--------------------

Note. The device's default IP is 192.168.1.200, and the port is 4196.

- Tip. When configuring multiple devices, please connect to each one individually. Since the initial IP is fixed, changing the settings for one device may inadvertently affect others.

Documents / Resources

 <p>WAVESHARE NOTA APPLICATIVA</p> <p>ABOX out of alarm box Integration Guide v1.1 (Waveshare Modbus POE ETH Relay)</p>	<p>WAVESHARE LPCI-COM485-8 ACCES I/O Distributor and Integrator [pdf] Owner's Manual LPCI-COM485-8 ACCES IO Distributor and Integrator, LPCI-COM485-8, ACCES IO Distributor and Integrator, Distributor and Integrator, Integrator</p>
--	--

References

- [W8-ch Ethernet Relay Module, Modbus RTU/Modbus TCP Protocol, PoE port Communication, With Various Isolation And Protection Circuits, Industrial Grade Rail-mount Case | Modbus POE ETH Relay](#)
- [W30-Ch Ethernet Relay Module, Modbus RTU/Modbus TCP Protocol, PoE Port Communication, With Various Isolation And Protection Circuits, Industrial Grade Rail-Mount Case | Modbus POE ETH Relay 30CH](#)
- [W8-ch Ethernet Relay Module \(B\) With Digital Input, Modbus RTU/Modbus TCP Protocol, PoE Port Communication, With Various Isolation And Protection Circuits, Industrial Grade Rail-Mount Case | Modbus POE ETH Relay \(B\)](#)
- [User Manual](#)

[Manuals+](#), [Privacy Policy](#)

This website is an independent publication and is neither affiliated with nor endorsed by any of the trademark owners. The "Bluetooth®" word mark and logos are registered trademarks owned by Bluetooth SIG, Inc. The "Wi-Fi®" word mark and logos are registered trademarks owned by the Wi-Fi Alliance. Any use of these marks on this website does not imply any affiliation with or endorsement.