

**WAVESHARE**  
WAVESHARE 2.7 Inch Paper  
Display HAT Module Kit



# WAVESHARE 2.7 Inch Paper Display HAT Module Kit User Manual

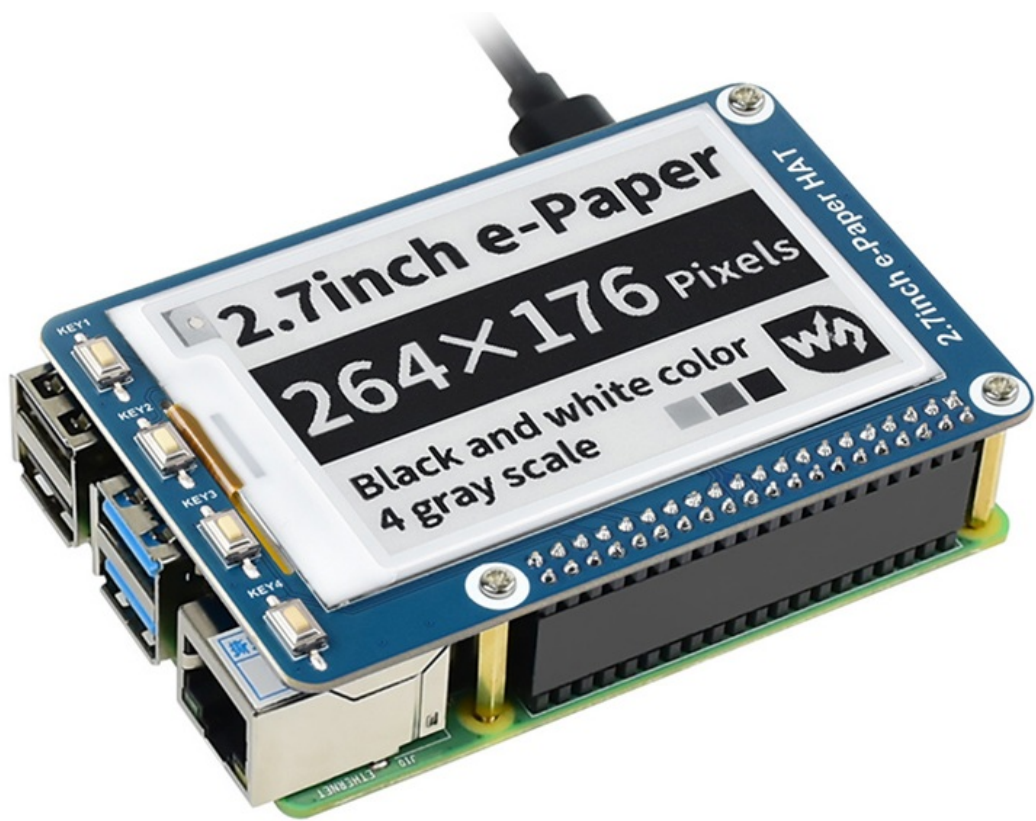
[Home](#) » [WAVESHARE](#) » WAVESHARE 2.7 Inch Paper Display HAT Module Kit User Manual 

## Contents

- [1 WAVESHARE 2.7 Inch Paper Display HAT Module Kit](#)
- [2 Introduction](#)
- [3 Parameters](#)
- [4 Working With Arduino](#)
- [5 Working With Jetson Nano](#)
- [6 Working With STM32](#)
- [7 Resources](#)
- [8 FAQ](#)
- [9 Technical Support](#)
- [10 Documents / Resources](#)
  - [10.1 References](#)
- [11 Related Posts](#)

# WAVESHARE

**WAVESHARE 2.7 Inch Paper Display HAT Module Kit**



## 2.7inch e-Paper HAT Manual

### Introduction

### Version Description

### Differences

- V2 supports partial refreshing and fast refreshing.
- Greyscale color display difference.
- FPC has been modified. Please pay attention to whether the holes/slots are compatible if using your own PCB.



**More**

## Parameters

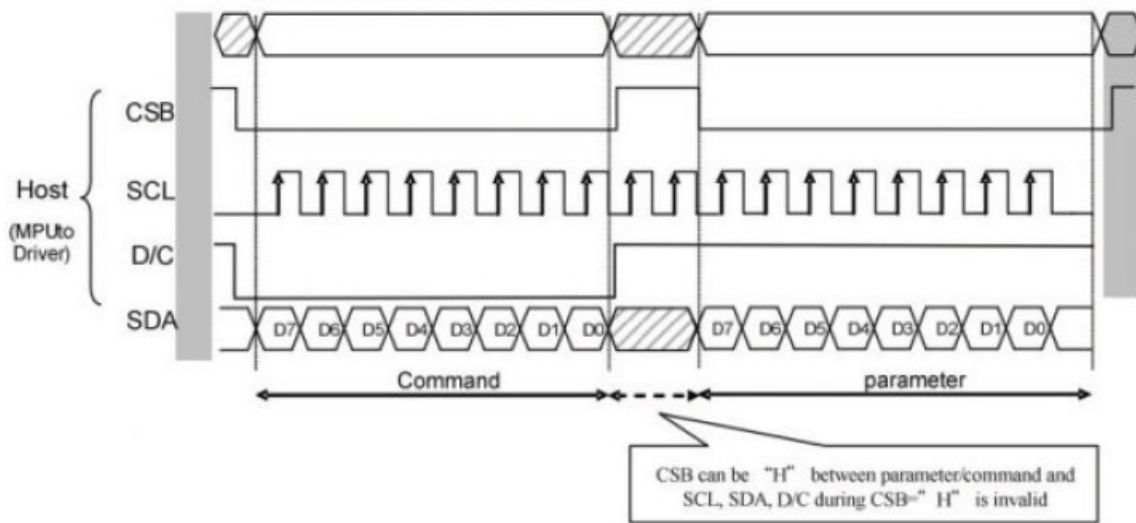
Dimensions	2.7inch
Driver board dimensions	85mm × 56mm
Display dimensions	57.288mm × 38.192mm
Outline dimensions (screen only)	70.42mm × 45.8mm × 0.98mm
Operating voltage	3.3V / 5V 5V is required for power and signal
Communication interface	SPI
Dot pitch	0.217mm × 0.217mm
Resolution	264 × 176
Display color	Black, white
Grey scale	2
Refresh time	6s
Refresh power	26.4mW typ.
Standby current	< 0.01uA almost 0

- **Refresh time:** The refresh time is the experimental results, the actual refresh time will have errors, and the actual effect shall prevail. There will be a flickering effect during the global refresh process, this is a normal

phenomenon.

- **Power consumption:** The power consumption data is the experimental results. The actual power consumption will have a certain error due to the existence of the driver board and the actual use situation. The actual effect shall prevail.

## SPI Communication Timing



- **CSB (CS):** Slave chip select, when CS is low, the chip is enabled.
- **SCL (SCK/SCLK):** UART clock signal.
- **D/C (DC):** Data/command control pin, writes commands at a low level; writes data/parameter at a high level.
- **SDA (DIN):** Serial data signal.
- **Timing:** CPHL=0, CPOL=0 (SPI0)

**Remarks** For more information about SPI, you can search for information online

## Working Principle

This product is an E-paper device adopting the image display technology of Microencapsulated Electrophoretic Display, MED. The initial approach is to create tiny spheres, in which the charged color pigments are suspended in the transparent oil and would move depending on the electronic charge. The E-paper screen display patterns by reflecting the ambient light, so it has no background light requirement. Under ambient light, the E-paper screen still has high visibility with a wide viewing angle of 180 degrees. It is the ideal choice for E-reading.

## Program Principle

We define the pixels in a monochrome picture, 0 is black and 1 is white.

White : □: Bit 1

Black : ■: Bit 0

The dot in the figure is called a pixel. As we know, 1 and 0 are used to define the color, therefore we can use one bit to define the color of one pixel, and 1 byte = 8pixels

For example, If we set the first 8 pixels to black and the last 8 pixels to white, we show it by codes, they will be 16 bit as below

Pixel	1	2	3	4	5	6	7	8	9	10	11	12	13	14	15	16
Index	0	1	2	3	4	5	6	7	8	9	10	11	12	13	14	15
Bit	0	0	0	0	0	0	0	0	1	1	1	1	1	1	1	1
Color	■	■	■	■	■	■	■	■	□	□	□	□	□	□	□	□

For computer, the data is saved in MSB format:

Pixel	1	2	3	4	5	6	7	8	9	10	11	12	13	14	15	16
Index	7	6	5	4	3	2	1	0	7	6	5	4	3	2	1	0
Bit	0	0	0	0	0	0	0	0	1	1	1	1	1	1	1	1
Color	■	■	■	■	■	■	■	■	□	□	□	□	□	□	□	□
Byte	0x00								0xFF							

So we can use two bytes for 16 pixels.

2.7inch e-paper's 4-level display (black and white 2-level display is still the same as above)

First of all, we need to understand the 4 grayscale picture, which shows that the brightness change between the brightest and the darkest is divided into 4 parts, from white to black, with 2 more colors in the middle, we can define it as light gray, dark Ash.

- **Black:** 00b
- **Dark Grey:** 01b
- **Light Gray:** 10b
- **White:** 11b

In order to save storage space in general computers, four grays generally occupy 2 bytes. In the above example, taking 8 pixels as an example, 2 pixels are black, 2 pixels are dark gray, 2 pixels are light gray, and 2 pixels are White:

pixel	1		2		3		4		5		6		7		8	
bit	7	6	5	4	3	2	1	0	7	6	5	4	3	2	1	0
Data storage	0	0	0	0	0	1	0	1	1	0	1	0	1	1	1	1
color	Black		Black		Dark Grey		Dark Grey		Light Grey		Light Grey		White		White	
byte	0x05								0xAF							

The same 4 grayscale picture can be regarded as the superposition of 2 pictures. The same pixel of different pictures is superimposed to form a pixel. There are 4 combinations of this point, that is, 4 grayscales

Register	White	Light Gray	Dark Gray	Black
0x10	0x01	0x01	0x00	0x00
0x13	0x01	0x00	0x01	0x00

The relationship between the 4 grayscales and the memory has been known above, and it is known that the color of the ink screen is inconsistent with different combinations, so the above data needs to be converted

pixel	1		2		3		4		5		6		7		8	
bit	7	6	5	4	3	2	1	0	7	6	5	4	3	2	1	0
Data storage	0	0	0	0	0	1	0	1	1	0	1	0	1	1	1	1
color	Black		Black		Dark Grey		Dark Grey		Light Grey		Light Grey		White		White	
byte	0x05								0xAF							
0x10Real Bit	0	0	0	0	0	0	0	0	0	1	0	1	0	1	0	1
0x13Real Bit	0	0	0	0	0	0	1	0	1	0	0	0	0	1	0	1
0x10 Real Transmission	0x00								0x55							
0x13 Real Transmission	0x05								0x05							

## Precautions

1. For E-paper displays that support partial refresh, please note that you cannot refresh them with the partial refresh mode all the time. After refreshing partially several times, you need to fully refresh EPD once. Otherwise, the display effect will be abnormal, which cannot be repaired!
2. Note that the screen cannot be powered on for a long time. When the screen is not refreshed, please set the screen to sleep mode or power off it. Otherwise, the screen will remain in a high voltage state for a long time, which will damage the e-Paper and cannot be repaired!
3. When using the e-Paper display, it is recommended that the refresh interval is at least 180s, and refresh at least once every 24 hours. If the e-Paper is not used for a long time, you should use the program to clear the screen before storing it. (Refer to the datasheet for specific storage environment requirements.)
4. After the screen enters sleep mode, the sent image data will be ignored, and it can be refreshed normally only after initializing again.
5. Control the 0x3C or 0x50 (refer to the datasheet for details) register to adjust the border color. In the demo, you can adjust the Border Waveform Control register or VCOM AND DATA INTERVAL SETTING to set the border.
6. If you find that the created image data is displayed incorrectly on the screen, it is recommended to check whether the image size setting is correct, change the width and height settings of the image and try again.
7. The working voltage of the e-Paper display is 3.3V. If you buy the raw panel and you need to add a level convert circuit for compatibility with 5V voltage. The new version of the driver board (V2.1 and subsequent versions) has added a level processing circuit, which can support both 3.3V and 5V. The old version only supports a 3.3V working environment. You can confirm the version before using it. (The one with the 20-pin chip on the PCB is generally the new version.)
8. The FPC cable of the screen is fragile, Please note: Do not bend the cable along the vertical direction of the screen to avoid tearing the cable; Do not repeatedly excessive bending line, to avoid line fracture; Do not bend the cable toward the front of the screen to prevent the cable from being disconnected from the panel. It is recommended to use fixed wiring during debugging and development.
9. The screen of e-Paper is relatively fragile, please try to avoid dropping, bumping, and pressing hard.
10. We recommend that customers use the sample program provided by us to test with the corresponding development board.

## Working With Raspberry Pi

### Hardware Connection

When connecting the Raspberry Pi, you can directly insert the board into the 40PIN pin header of the Raspberry Pi, and pay attention to the correct pins.

If you choose to connect with an 8PIN cable, please refer to the pin correspondence table below

Raspberry Pi Pinout

e-Paper	Raspberry Pi	
	BCM2835	Board
VCC	3.3V	3.3V
GND	GND	GND
DIN	MOSI	19
CLK	SCLK	23
CS	CE0	24
DC	25	22
RST	17	11
BUSY	24	18

### Enable SPI Interface

Open the Raspberry Pi terminal and enter the following command in the config interface: `sudo raspi-config`

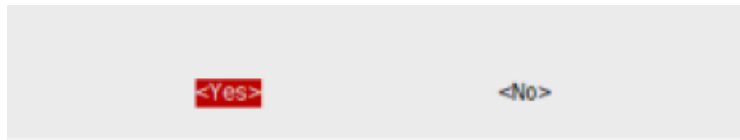
Choose Interfacing Options -> SPI -> Yes Enable SPI interface

```
1 Change User Password  Change password for the current user
2 Network Options       Configure network settings
3 Boot Options          Configure options for start-up
4 Localisation Options  Set up language and regional settings to match your location
5 Interfacing Options   Configure connections to peripherals
6 Overclock             Configure overclocking for your Pi
7 Advanced Options      Configure advanced settings
8 Update                Update this tool to the latest version
9 About raspi-config    Information about this configuration tool
```

```
P1 Camera  Enable/Disable connection to the Raspberry Pi Camera
P2 SSH      Enable/Disable remote command line access to your Pi using SSH
P3 VNC      Enable/Disable graphical remote access to your Pi using RealVNC
P4 SPI      Enable/Disable automatic loading of SPI kernel module
P5 I2C      Enable/Disable automatic loading of I2C kernel module
P6 Serial   Enable/Disable shell and kernel messages on the serial connection
P7 1-Wire   Enable/Disable one-wire interface
P8 Remote GPIO Enable/Disable remote access to GPIO pins
```

```
Would you like the SPI interface to be enabled?
```





Then reboot your Raspberry Pi  
sudo reboot

- Check /boot/config.txt, and you can see 'dtparam=spi=on' was written in.

```
# Uncomment some or all of these to enable the optional hardware interfaces
dtparam=i2c_arm=on
#dtparam=i2s=on
dtparam=spi=on
```

- To make sure SPI is not occupied, it is recommended to close other drivers' coverage. You can use ls /dev/spi\* to check whether SPI is occupied. If the terminal outputs /dev/spidev0.1 and /dev/spidev0.1, SPI is not occupied

```
pi@raspberrypi:~ $ ls /dev/spi*
/dev/spidev0.0 /dev/spidev0.1
```

#### Install lg library:

- #Open the Raspberry Pi terminal and run the following commands:
- wget <https://github.com/joan2937/lg/archive/master.zip>
- unzip master.zip
- cd lg-master
- make
- sudo make install
- #For more details, you can refer to: <https://github.com/gpiozero/lg>

#### Install gpiod library (Optional)

#Open the Raspberry Pi terminal and run the following commands:  
sudo apt-get update  
sudo apt install gpiod libgpiod-dev

#### Install BCM2835

- #Open the Raspberry Pi terminal and run the following command wget  
<http://www.airspayce.com/mikem/bcm2835/bcm2835-1.71.tar.gz>
- tar zxvf bcm2835-1.71.tar.gz
- cd bcm2835-1.71/
- sudo ./configure && sudo make && sudo make check && sudo make install
- For more information, please refer to the official website: <http://www.airspayce.com/mikem/bcm2835/>

#### Install WiringPi (Optional)

- #Open the Raspberry Pi terminal and run the following command: sudo apt-get install wiringpi



- #For Raspberry Pi systems after May 2019 (earlier than before, you may not need to execute), you may need to upgrade:
- wget <https://project-downloads.drogon.net/wiringpi-latest.deb>
- sudo dpkg -i wiringpi-latest.deb
- gpio -v
- #Run gpio -v and version 2.52 will appear. If it does not appear, the installation is wrong.
- #Bullseye branch system use the following command: git clone https://github.com/WiringPi/WiringPi
- cd WiringPi
- ./build
- gpio -v
- # Run gpio -v and version 2.60 will appear. If it does not appear, it means that there is an installation error.

Download the demo via GitHub (You can skip this step if you have downloaded it.)

- git clone <https://github.com/waveshare/e-Paper.git>
- cd e-Paper/RaspberryPi\_JetsonNano/

Download the demo (You can skip this step if you have downloaded it.) wget [https://files.waveshare.com/upload/7/71/E-Paper\\_code.zip](https://files.waveshare.com/upload/7/71/E-Paper_code.zip)

- unzip E-Paper\_code.zip -d e-Paper
- cd e-Paper/RaspberryPi\_JetsonNano/

Compile the demo (Note: -j4 is to compile with 4 threads, the numbers can be modified by yourself; EPD=epd2in7V2 is to specify a macro definition, and epd2in7V2 corresponds to the test demo in the main function).

- # Now at e-Paper/RaspberryPi\_JetsonNano
- cd c
- sudo make clean
- sudo make -j4 EPD=epd2in7V2

Run the demo

sudo ./epd

## Python

Install the function library

- sudo apt-get update
- sudo apt-get install python3-pip
- sudo apt-get install python3-pil
- sudo apt-get install python3-numpy
- sudo pip3 install RPi.GPIO
- sudo pip3 install spidev

Install function library (python2)

- `sudo apt-get update`
- `sudo apt-get install python-pip`
- `sudo apt-get install python-pil`
- `sudo apt-get install python-numpy`
- `sudo pip install RPi.GPIO`
- `sudo pip install spidev`

Install gpiozero library (it is installed in the system by default, if not, you can install it by following the commands below):

- `sudo apt-get update`
- `# python3`
- `sudo apt install python3-gpiozero`
- `# python2`
- `sudo apt install python-gpiozero`

Download the demo via GitHub (You can skip this step if you have downloaded it.)

- `git clone https://github.com/waveshare/e-Paper.git`
- `cd e-Paper/RaspberryPi_JetsonNano/`

Download the demo (You can skip this step if you have downloaded it.)

- `wget https://files.waveshare.com/upload/7/71/E-Paper\_code.zip`
- `unzip E-Paper_code.zip -d e-Paper`
- `cd e-Paper/RaspberryPi_JetsonNano/`

## Run the demo

- `# Make sure it's in e-Paper/RaspberryPi_JetsonNano/`
- `cd python/examples/`
- `python3 epd_2in7_V2_test.py`

## Working With Arduino

### Hardware Connection

Use an 8PIN cable to connect, please refer to the pin correspondence table below

## Connect To Arduino

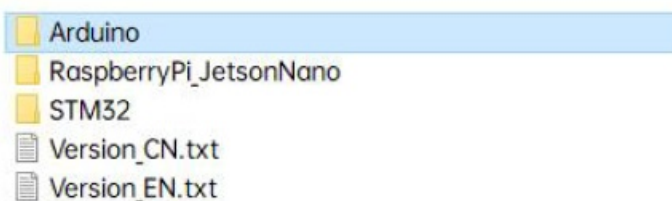
e-Paper	Arduino UNO	Mega2560
VCC	5V	5V
GND	GND	GND
DIN	D11	D51
CLK	D13	D52
CS	D10	D10
DC	D9	D9
RST	D8	D8
BUSY	D7	D7

## Install IDE

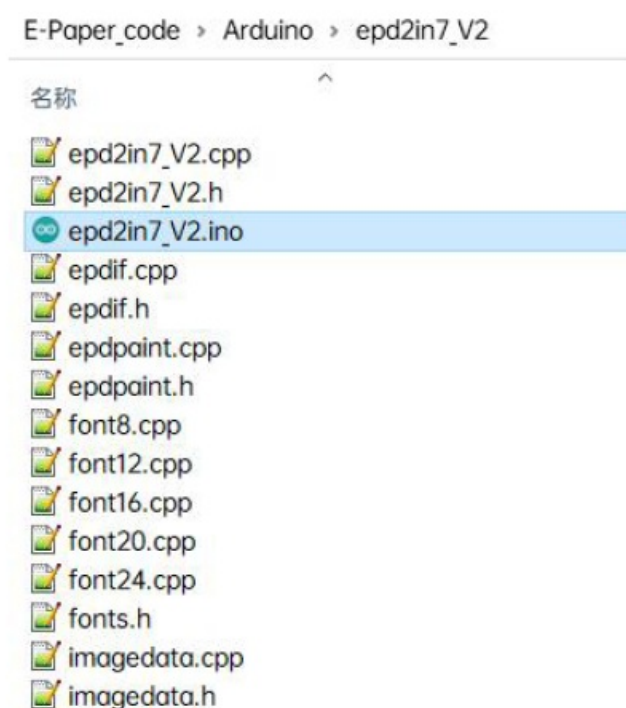
Arduino IDE Windows Install Guide

## Run The Demo

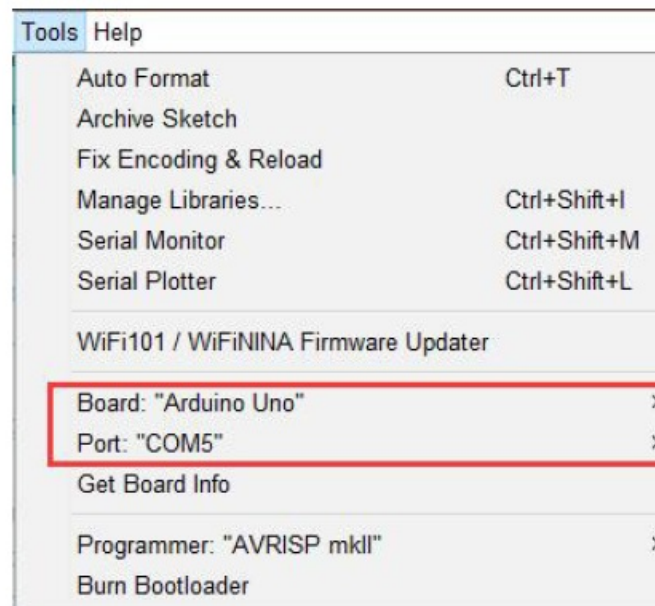
Download the demo in Resource, unzip it to the “E-Paper\_code” directory, and you can see the following content



Open the test demo: E-Paper\_code\Arduino\epd2in7\_V2\epd2in7\_V2.ino



Select the corresponding Board and Port in the Tools in the Arduino IDE.



Finally, click upload, the upload is successful as follows (Arduino 1.8.13).

```
avrdude: AVR device initialized and ready to accept instructions

Reading | ##### | 100% 0.01s

avrdude: Device signature = 0x1e950f (probably m328p)
avrdude: reading input file 
avrdude: writing flash (6916 bytes):

Writing | ##### | 100% 2.64s

avrdude: 6916 bytes of flash written

avrdude done. Thank you.
```

## Working With Jetson Nano

### Hardware Connection

The 40PIN pin of Jetson Nano is compatible with the 40PIN pin of Raspberry Pi and provides a Jetson.GPIO library with the same API as the RPI.GPIO library of Raspberry Pi, so the serial number connected here is the same as that of Raspberry Pi. The module can be directly inserted into the 40Pin headers of the Jetson Nano when using the 40PIN interface. If you choose to connect with an 8PIN cable, please refer to the pin correspondence table below:

### Connect to Jetson nano

e-Paper	Jetson Nano Developer Kit	
	BCM2835	Board
VCC	3.3V	3.3V
GND	GND	GND
DIN	10 (SPI0_MOSI)	19
CLK	11 (SPI0_SCK)	23
CS	8 (SPI0_CS0)	24
DC	25	22
RST	17	11
BUSY	24	18

Download the demo via GitHub (you can skip this step if you have downloaded it.)

- git clone <https://github.com/waveshare/e-Paper.git>
- cd e-Paper/RaspberryPi\_JetsonNano/

Download the test demo: (you can skip this step if you have downloaded it.)

- wget [https://files.waveshare.com/upload/7/71/E-Paper\\_code.zip](https://files.waveshare.com/upload/7/71/E-Paper_code.zip)
- unzip E-Paper\_code.zip -d e-Paper
- cd e-Paper/RaspberryPi\_JetsonNano/

Compile the demo (Note: JETSON is the specified device, and RPI is not specified by default. -j4 is to compile by 4 threads, and the number can be changed by yourself. "EPD=epd2in7V2" is to specify a macro definition, and "epd2in7V2" corresponds to the test demo in the main function.)

- # Now at e-Paper/RaspberryPi\_JetsonNano
- cd c
- sudo make clean
- sudo make JETSON -j4 EPD=epd2in7V2

Run the demo

sudo ./epd

## Python

Install function library

- sudo apt-get update

- `sudo apt-get install python3-numpy`
- `sudo apt-get install python3-pip`
- `sudo pip3 install Jetson.GPIO`

Download the demo via GitHub (you can skip this step if you have downloaded it.)

- `git clone https://github.com/waveshare/e-Paper.git`
- `cd e-Paper/RaspberryPi_JetsonNano/`

Download the demo (you can skip this step if you have downloaded it.)

- `wget https://files.waveshare.com/upload/7/71/E-Paper_code.zip`
- `unzip E-Paper_code.zip -d e-Paper`
- `cd e-Paper/RaspberryPi_JetsonNano/`

Run the demo

- `# Make sure it's in e-Paper/RaspberryPi_JetsonNano/`
- `cd python/examples/`
- `python3 epd_2in7_V2_test.py`

## Working With Sunrise X3 Pi

### Hardware Connection

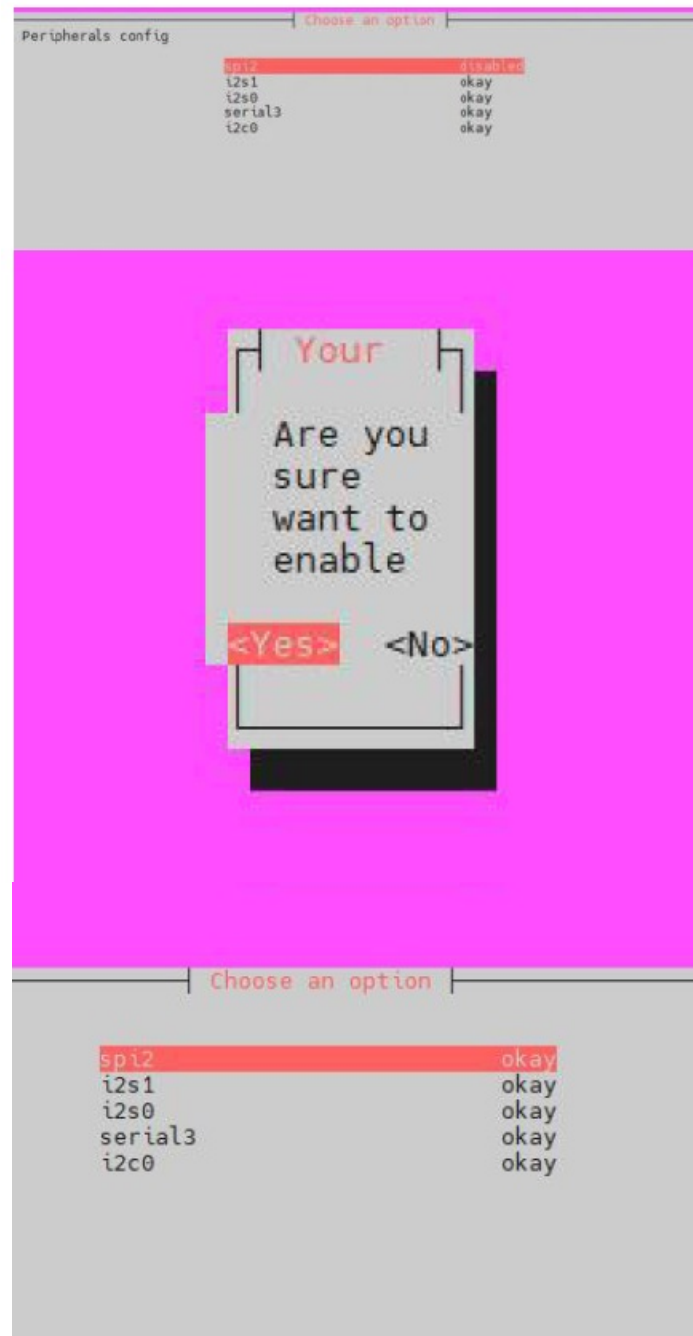
When connecting the Sunrise X3 Pi, you can directly insert the board into the 40PIN pin header of the Sunrise X3 Pi, and pay attention to the correct pins.

If you choose to connect with an 8PIN cable, please refer to the pin correspondence table below

e-Paper	Sunrise X3 Pi	
	BCM	Board
VCC	3.3V	3.3V
GND	GND	GND
DIN	MOSI	19
CLK	SCLK	23
CS	CE0	24
DC	25	22
RST	17	11
BUSY	24	18

## Enable SPI

- SPI is enabled by default. If you have disabled it, you can enable it by following the steps below.
- Enter the command: `sudo srpi-config`



## Python

The corresponding library has been installed in the function. If you uninstall it accidentally, please use the following command to install it.

- `sudo apt-get update`
- `sudo apt-get install python-pip`
- `sudo apt-get install python-pil`
- `sudo apt-get install python-numpy`
- `sudo pip install Hobot.GPIO`
- `sudo pip install spidev`



Download the demo via GitHub (skip this step if you have downloaded it).

- git clone <https://github.com/waveshare/e-Paper.git>
- cd e-Paper/RaspberryPi\_JetsonNano/

Download the demo (skip this step if you have downloaded it).

- wget [https://files.waveshare.com/upload/7/71/E-Paper\\_code.zip](https://files.waveshare.com/upload/7/71/E-Paper_code.zip)
- unzip E-Paper\_code.zip -d e-Paper
- cd e-Paper/RaspberryPi\_JetsonNano/

Run the demo

- # Make sure you are in e-Paper/RaspberryPi\_JetsonNano/
- cd python/examples/
- python3 epd\_2in7\_V2\_test.py

## Working With STM32

### Hardware Connection

Connect to STM32

e-Paper	STM32
VCC	3.3V
GND	GND
DIN	PA7
CLK	PA5
CS	PA4
DC	PA2
RST	PA1
BUSY	PA3

### Run The Program

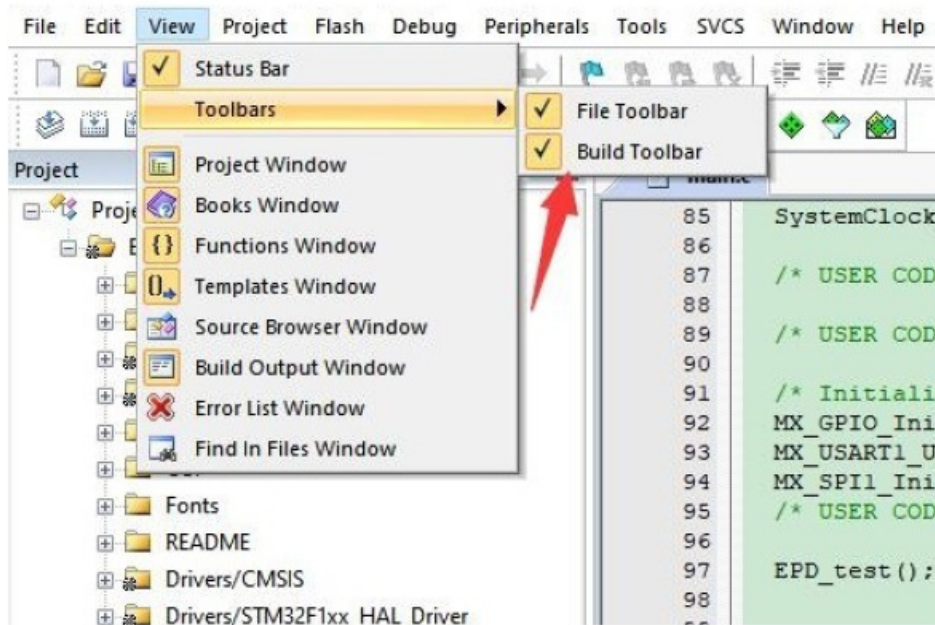
Click to download the demo , and then unzip it into the E-Paper\_code directory to see the following content.

## E-Paper\_code >

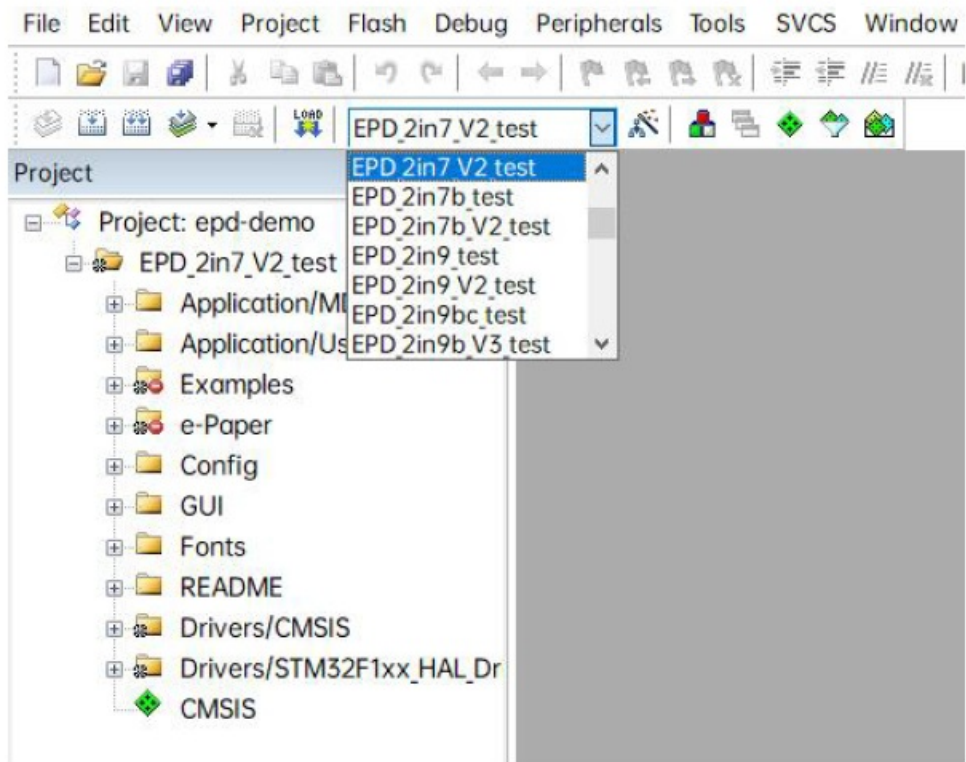
名称

- Arduino
- RaspberryPi\_JetsonNano
- STM32
- Version\_CN.txt
- Version\_EN.txt

- Use Keil to open epd-demo.uvprojx in the E-Paper\_code\STM32\STM32-F103ZET6\MDK-ARM directory
- Open Keil's compilation toolbar (usually already open).



- Select the EPD\_2in7\_V2\_test at the location shown in the picture



Click to compile.

```
linking...
Program Size: Code=24732 RO-data=19288 RW-data=396 ZI-data=53428
FromELF: creating hex file...
"epd-demo\epd-demo.axf" - 0 Error(s), 0 Warning(s).
Build Time Elapsed: 00:00:12
```

Make sure the appropriate programmer is connected, then click LOAD to download the demo to the microcontroller

## ESP32/8266

### ESP32

There is a lot of content, please click here to view.

### ESP8266

There is a lot of content, please click here to view.

## Resources

### Documentation

- Schematic
- 2.7inch\_e-Paper\_V2\_Specification.pdf (Newest)
- 2.7inch-e-paper-Specification.pdf

### Demo code

- Demo (E-Paper\_code.zip)
- Github

## Development Resources

- E-Paper Floyd-Steinberg
- Image2Lcd.7z
- Image2Lcd Image Modulo
- Zimo221.7z
- E-Paper\_API\_Analysis

## Related Resources

Raspberry Pi Documentation

## FAQ

### Question about Software

**Question:**The Raspberry Pi runs the Python program and the following occurs?

```
pi@liguanghao:~/e-Paper/RaspberryPi_JetsonNano/python/examples $ python3 epd_7in5_V2_test.py
INFO:root:epd7in5_V2 Demo
INFO:root:init and Clear
INFO:root:[Errno 2] No such file or directory
```

### Answer

- Enter the command: ls /dev/spi\*
- The result may appear as shown in the figure.

```
pi@raspberrypi:~ $ ls /dev/spidev*
/dev/spidev0.1 /dev/spidev1.1 /dev/spidev1.2
```

- This is because the SPI interface is occupied in the /boot/config.txt file.

```
dtoverlay=spi=on
dtoverlay=spi1-3cs
dtoverlay=mcp251xfd,spi0-0,interrupt=25
dtoverlay=mcp251xfd,spi1-0,interrupt=24
```

## Steps

- Delete the occupation of spi0-0 in the /boot/config.txt file.
- Modify the location shown in the picture in the /e-Paper/RaspberryPi\_JetsonNano/lib/waveshare\_epd/epdconfig.py file and change it to 0,1.

```

75
76 # SPI device bus = 0 device = 0
77 self.SPI.open(0, 0)
78 self.SPI.max_speed_hz = 4000000
79 self.SPI.mode = 0b00
80 return 0

```

- **Question:stm32 drives the e-paper screen, the MDK compilation display space is not enough?**

**Answer**

Our demo uses stm32f103zet6. If the customer modifies other models in MDK, such as stm32f103rbt6, the ram space becomes

smaller, and the stack size and heap size in the startup file need to be modified on the original basis.

- **Question:After multiple positions are brushed, the font is lighter after brushing several times?**

**Answer:**

In this case, the customer needs to reduce the position of the round brush and clear the screen after 5 rounds of brushing

(increasing the voltage of VCOM can improve the color, but it will increase the afterimage).

- **Question: When the e-paper screen is in deep sleep mode, there will be a problem that the screen refresh will not be clean when it wakes up for the first time. How can I solve it?**

**Answer:**

The process of re-awakening the e-ink screen is actually the process of re-powering. Therefore, when the EPD wakes up, the

screen must be cleared first, so as to avoid the afterimage phenomenon to the greatest extent.

- **Question: When testing the demo, it has been stuck in e-Paper busy?**

**Answer:**

It may be caused by the unsuccessful SPI driver.

1. First check whether the wiring is correct.
2. Check whether the spi is turned on and whether the parameters are configured correctly (spi baud rate, spi mode, and other parameters).

- **Question: Why can't the image be displayed after full brushing?**

**Answer:**

The full refresh initialization function needs to be added when the ink screen is switched from partial refresh to full refresh.

- **Question: Why is the printing information normal when running a Python program, but the ink screen does not respond?**

**Answer:**

It may be a demo based on the BCM2835 library that has run the C language before. At this time, you need to restart the

Raspberry Pi and then run the Python demo.

- **Question:ImportError: No module named Image?**

**Answer:**

Install the imaging library using the command `sudo apt-get install python-imaging`

- **Question: When to transmit Data Start Transmission 1 and when to use Data Start Transmission 2. In KW mode, what is "OLD" data and what is "NEW" data. ?**

**Answer:**

If it is a three-color screen, when you need to transmit B/W data, use Data Start Transmission 1, when transmitting RED data, use

Data Start Transmission 2, because the 2.13inch e-Paper HAT (D) can only display black and white, Therefore, when working in

KW mode Data Start Transmission 1, the last data is sent, that is, the so-called old, and 0x00 is directly sent in the program.

When Data Start Transmission 2, the data that needs to be refreshed, the so-called "NEW" is sent. data.

- **Question:The e-Paper display is too dark or too light?**

**Answer:**

You can adjust the value of Vcom in the program to change the display contrast, and the screen improvement effect with local

brushing is particularly obvious.

- **Question:e-Paper shows black border?**

**Answer:**

The border display color can be set through the Border Waveform Control register or the VCOM AND DATA INTERVAL

SETTING register.

- **Question: When the ink screen is in deep sleep mode, the first time the screen refreshes will be unclear. How can I solve it?**

**Answer:**

The process of re-awakening the e-paper screen is actually the process of supplying the power again.

Therefore, when the EPD

wakes up, it must first clear the screen, so as to avoid the afterimage phenomenon to the greatest extent.

## **Question about Hardware**

- **Question:Can Arduino 5V drive the ink screen?**

**Answer:**

Yes, now there is a level conversion chip onboard, supporting a 5V drive.

- **Question:What should be paid attention to when designing the driver board?**

**Answer:**

The rated input voltage of the e-paper screen is 2.3~3.6V. If it is a 5V system, level conversion is required. In addition, the voltage should not be lower than 2.5V, so as not to affect the display effect of the e-paper screen.

Device selection can use the model in the schematic diagram we provide or choose according to the data sheet.

- **Question:Can I use analog SPI?**

**Answer:**

Yes, pay attention to the correct timing.

- **Question:Why is the BUSY pin always busy?**

**Answer:**

- Check if SPI communication is normal.
- Confirm whether the BUSY pin is normally initialized to input mode.
- It may be that there is no normal reset, try to shorten the duration of the low level during reset (because

the power-off switch is added to the drive circuit, the reset low level is too long, which will cause the drive board to power off and cause the reset to fail).

- If the busy function sends the 0x71 command, you can try to comment it out.

• **Question:What is the specification of the screen cable interface?**

**Answer:**

- 1.64inch, 2.36inch, 3inch, 0.5mm pitch, 26Pin.
- 1.02inch, 0.5mm pitch, 30Pin.
- 4.37inch, 7.3inch, 0.5mm pitch, 50Pin.
- The rest (non-parallel ports) are 0.5mm pitch, 24Pin.

• **Question:What type of connector does the ink screen use?**

**Answer:**

Cable socket 0.5-24pin rear-flip 2.0H (FPC connector).

**Question about Screen**

**Question:What is the usage environment of the e-paper screen?**

• **Answer:**

- Working conditions Temperature range: 0~50°C; Humidity range: 35%~65%RH.
- Storage conditions Temperature range: below 30°C; Humidity range: below 55%RH; Maximum storage time: 6 months.
- Transportation conditions Temperature range: -25~70°C; Maximum transportation time: 10 days.
- After unpacking Temperature range: 20°C±5°C; Humidity range: 50±5%RH; Maximum storage time: Assemble within 72 hours.

**Question: Precautions for E-paper screen refresh**

**Answer:**

• **Refresh mode**

- **Full refresh:** The e-paper screen will flicker several times during the refresh process (the number of flickers depends on the refresh time), and the flicker is to remove the afterimage to achieve the best display effect.
- **Partial refresh:** The e-paper screen has no flickering effect during the refresh process. Users who use the partial brushing function note that after refreshing several times, a full refresh operation should be performed to remove the residual image, otherwise the residual image problem will become more and more serious, or even damage the screen (currently only some black and white e-paper screens support partial refreshing, please refer to product page description).

• **Refresh rate**

During use, it is recommended that customers set the refresh interval of the e-paper screen to at least 180 seconds (except for products that support the local brush function).

During the standby process (that is, after the refresh operation), it is recommended that the customer set the e-paper screen to sleep mode, or power off (the power supply part of the e-paper screen can be disconnected with an analog switch) to reduce power consumption and prolong the life of the e-paper screen. (If some e-paper screens are powered on for a long time, the screen will be damaged beyond repair.) During the use of the three-color e-paper screen, it is recommended that customers update the display screen at least once every 24 hours (if the screen remains the same screen for a long time, the screen burn will be difficult to repair).



- **Application**

The e-paper screen is recommended for indoor use. If it is used outdoors, it is necessary to avoid direct sunlight on the e-paper screen, and at the same time, take UV protection measures, because charged particles will dry out under strong light for a long time, resulting in loss of activity and failure to refresh. This situation is irreversible. When designing e-paper screen products, customers should pay attention to determining whether the use environment meets the requirements of an e-paper screen.

- **Question: What is the refresh rate/lifetime of the e-paper screen?**

**Answer:**

Ideally, with normal use, it can be refreshed 1,000,000 times (1 million times).

- **Question: After using for a period of time, the screen refresh (full refresh) has a serious afterimage problem that cannot be repaired?**

**Answer:**

Power on the development board for a long time, after each refresh operation, it is recommended to set the screen to sleep mode

or directly power off processing, otherwise, the screen may burn out when the screen is in a high voltage state for a long time.

- **Question: After the e-paper screen enters deep sleep mode, can it be refreshed again?**

**Answer:**

Yes, but you need to re-initialize the electronic paper with software.

- **Question: Why is the image displayed offset?**

**Answer:**

Maybe the SPI rate is too high, resulting in data loss, try to reduce the SPI rate. Insufficient or unstable power supply leads to data loss. The data cable is too long to cause data loss, the extension cable should not exceed 20cm.

- **Question: What is the waveform file of the e-paper screen and what does it do?**

**Answer:**

The display gray scale of electrophoretic electronic paper is determined by the spatial position of the particles in the Microcapsule or Microcup. The electrophoresis phenomenon occurs between black particles and white particles under the action of voltage. This voltage sequence that promotes the electrophoretic movement of the particles is the driving force of the electronic paper. waveform. The driving waveform is the core part of the electronic paper display, and the optimization of the driving waveform will directly affect the display effect of the display. The driving waveform file is used to describe the parameters formed by the voltage sequence that promotes the electrophoretic movement of the particles, and it needs to be called regularly when the electronic paper is refreshed. Different batches of e-paper diaphragms and electrophoretic matrices require different voltage values when driving the display due to materials, manufacturing processes, etc. The waveform of the e-paper screen is reflected in the relationship between grayscale, voltage, and temperature. Generally speaking, after each batch of electrophoresis matrix is generated, there will be a corresponding waveform file in the form of a .wbf file. The film manufacturer will provide the waveform file and electrophoresis matrix to the manufacturer of the electronic paper screen, and then the manufacturer of the electronic paper screen integrates the protection board, substrate, and driver and then provides it to customers; if the waveform file does not correspond to the screen, it is likely that the display cannot be displayed or the display effect is unsatisfactory. Generally, the waveform file has OTP built into the driver IC of the ink screen when leaving the factory, and some programs we provide also called external waveform files to drive the e-paper screen.

- **Question: What do LUT and OTP stand for?**

**Answer:**

LUT is the abbreviation of LOOK UP TABLE, and OTP is the abbreviation of ONE TIME PROGRAM. The original intention of

LUT is to load waveform files, and the waveform files are divided into OTP and REGISTER. Among them, OTP is the built-in

waveform storage method, and REGISTER is the external waveform storage method.

**• Question:What is the process of refreshing e-paper partially?****Answer:**

- There are mainly two types of ink screens.
- One is to refresh the background image first.
- The other is to alternately refresh old data and new data.

**• Question: How to refresh in different positions at the same time?****Answer:**

Simultaneous brushing in different locations needs to be operated in the program design, that is, first brushing the data of different locations into the electronic paper IC, and finally doing the Update/TurnOnDisplay uniformly.

**• Question: Are bare screens shipped with a film?**

**Answer:** with film.

**• Question: Does e-paper have a built-in temperature sensor?****Answer:**

At present, all screens have built-in temperature sensors, and you can also use an external LM75 temperature sensor with IIC pins.

**• Question: What is the pitch of the 8-pin connectors on the E-Ink display hats?****Answer:**

The pitch of the 8-pin connectors on the E-Ink display hats is 0.1 inch (2.54 mm). Support

## Technical Support

- If you need technical support or have any feedback/review, please click the Submit Now button to submit a ticket, Our support team will check and reply to you within 1 to 2 working days. Please be patient as we make every effort to help you to resolve the issue.
- Working Time: 9 AM – 6 AM GMT+8 (Monday to Friday)
- Submit Now

## Documents / Resources


--	--



[WAVESHARE 2.7 Inch Paper Display HAT Module Kit](#) [pdf] User Manual  
2.7 Inch Paper Display HAT Module Kit, Display HAT Module Kit, HAT Module Kit, Module Kit, Ki  
t

---

## References

-  [airspayce.com/mikem/bcm2835/bcm2835-1.71.tar.gz](https://airspayce.com/mikem/bcm2835/bcm2835-1.71.tar.gz)
-  [GitHub - gpiozero/lc: Linux C libraries and Python modules for manipulating GPIO](#)
-  [GitHub - waveshareteam/e-Paper](#)
-  [GitHub - WiringPi/WiringPi: The arguably fastest GPIO Library for the Raspberry Pi](#)
-  [project-downloads.drogon.net/wiringpi-latest.deb](https://project-downloads.drogon.net/wiringpi-latest.deb)
- [User Manual](#)

[Manuals+](#), [Privacy Policy](#)

This website is an independent publication and is neither affiliated with nor endorsed by any of the trademark owners. The "Bluetooth®" word mark and logos are registered trademarks owned by Bluetooth SIG, Inc. The "Wi-Fi®" word mark and logos are registered trademarks owned by the Wi-Fi Alliance. Any use of these marks on this website does not imply any affiliation with or endorsement.