

WATTSHOP MK2 Extension Mono Stack User Guide



WATTSHOP MK2 Extension Mono Stack User Guide

[Home](#) » [WattShop](#) » WATTSHOP MK2 Extension Mono Stack User Guide 

Contents

- 1 WATTSHOP MK2 Extension Mono Stack
- 2 EXTENSION INFORMATION
 - 2.1 BRACKET
- 3 HANDGRIP SELECTION
- 4 BRACKET BUILD
- 5 RISER SELECTION
- 6 ARMREST+ COMPUTER MOUNT SELECTION
- 7 BRACKET SELECTION
- 8 Documents / Resources
 - 8.1 References



WATTSHOP MK2 Extension Mono Stack



EXTENSION INFORMATION

BUILD OPTION

For mono-riser stack systems, there is only one build option available. It is critical to ascertain the correct size bracket to meet your requirements.

BRACKET



Core components



Extensions

Handgrips

Armrests

Baseball-specific adjustable riser fixed angled riser

Crossbrace computer mount

Bracket

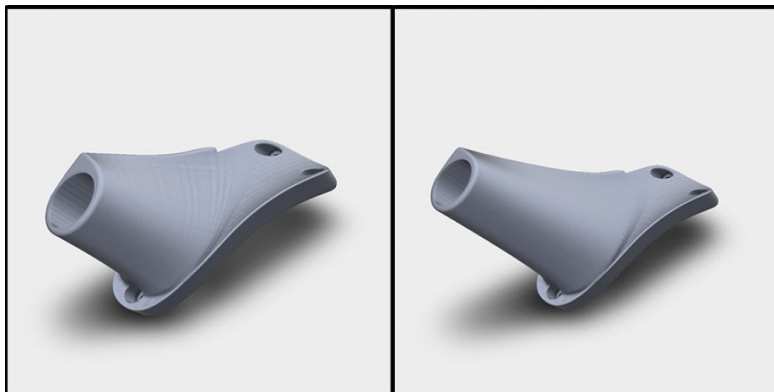
HANDGRIP SELECTION

STANDARD POLE+ STANDARD POLE (LONG)

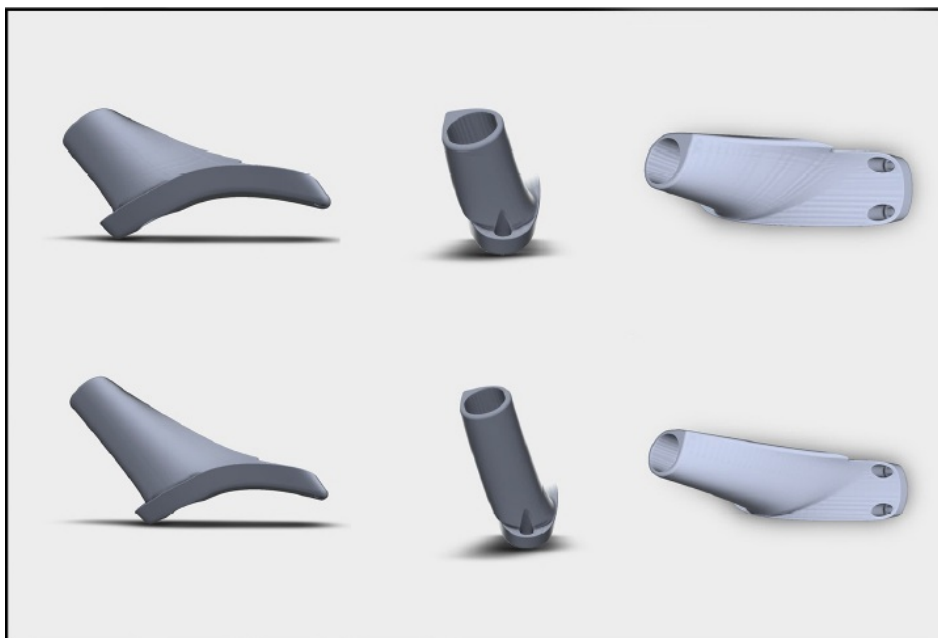
The standard pole handgrip mirrors the traditional pole end shifter. It is compatible with the following shifters:

- SHIMANO R9160

- SHIMANO SW671
- SRAM cues



The handgrips will be available in a standard length for athletes competing under UCI regulations who want to maximise their extension and le, and a longer length for athletes competing under non-UCI-regulated events.



Install method

The bracket attaches to your existing mono stack riser. In turn, the baseball-specific riser or fixed-angled riser will attach to the bracket.

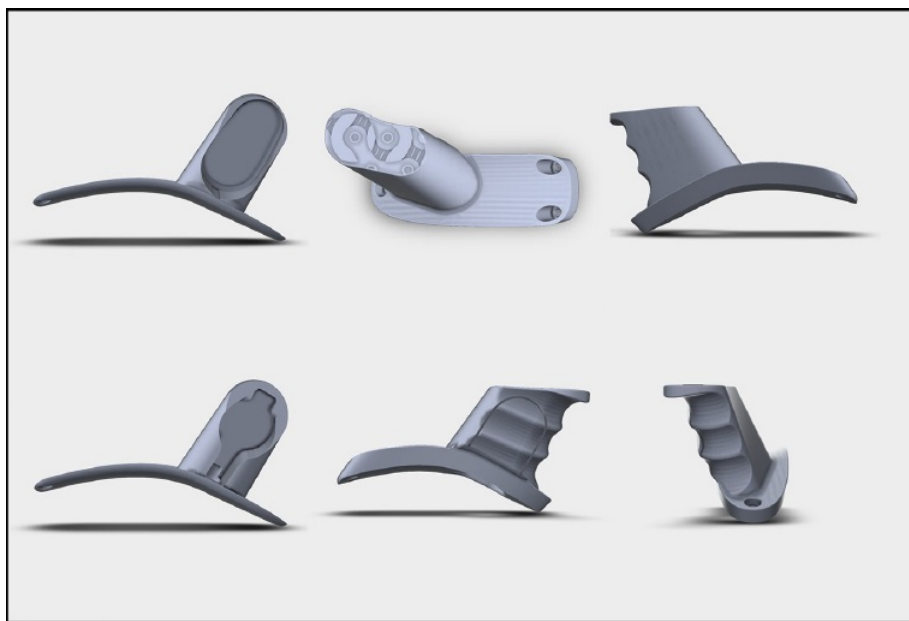
ERGO

The Ergo handgrip is available in different versions. They are named as follows:

- SHIMANO R9150
- SRAM WIRELESS BLIPS
- SRAM WIRED BLIPS
- TRACK



All versions except the track handgrip will be supplied with an inner and outer component. The shifter lever but will attach to the inner component while the outer component slides over the top. This increases the shifter contact freshener sh lifting.



UCI HAND HEIGHT COMPLIANCE

When competing under UCI regulations you will need to ensure you are compliant with the UCI regulations applicable to your height category.

- **CATEGORY 1** – riders are allowed 700mm mid-point of the armrest to the extension tip.
- **CATEGORY 2** – riders are allowed 720mm mid-point of the armrest to the extension tip.
- **CATEGORY 3** – riders are allowed a 740mm mid-point of the armrest to the extension tip.
- **NON-CATEGORY** – riders are allowed 700mm mid-point of the armrest to the extension tip.



Please note: mid-point to extension tip measurements are measured vertically All accessories are included in these dimensions.

WattShop Product Compatibility

Compatible with the complete range of WattShop componentry. Due to the control led later in the centre of this mounting option, our cross-brace BTA mount and computer mount are the optimal choices for this build.

- COMPLIANT
- CONDITIONS APPLY
- NON-COMPLIANT

UCI NON-CATEGORY				
Riser Anale	Handgrip			
	Ergo	Ergo (Track)	Standard Pole	Standard Pole (Long)
10				
15	100	100	98	119
20	120	120	120	143
25	139	139	142	166
30	158	158	162	188

UCI CATEGORY 1				
Riser Angle	Handgrip			
	Ergo	Ergo (Track)	Standard Pole	Standard Pole (Long)
10	79	79	74	94
15	100	100	98	119
20	120	120	120	143
25	139	139	142	166
30	158	158	162	188

UCI CATEGORY 2					
Riser Angle	Ergo	Ergo (Track)	Handgrip	Standard Pole	Standard Pole (Long)
10			74		
15	100	100	98		
20	120	120	120		143
25	139	139	142		166
30	158	158	162		188

UCI CATEGORY 3				
Riser Angle	Handgrip			
	Ergo	Ergo (Track)	Standard Pole	Standard Pole (Long)
10		79	74	94
15	100	100	98	119
20	120	120	120	143
25	139	139	142	166
30	158	158	162	188

All dimensions are in millimetres (mm) unless otherwise stated.

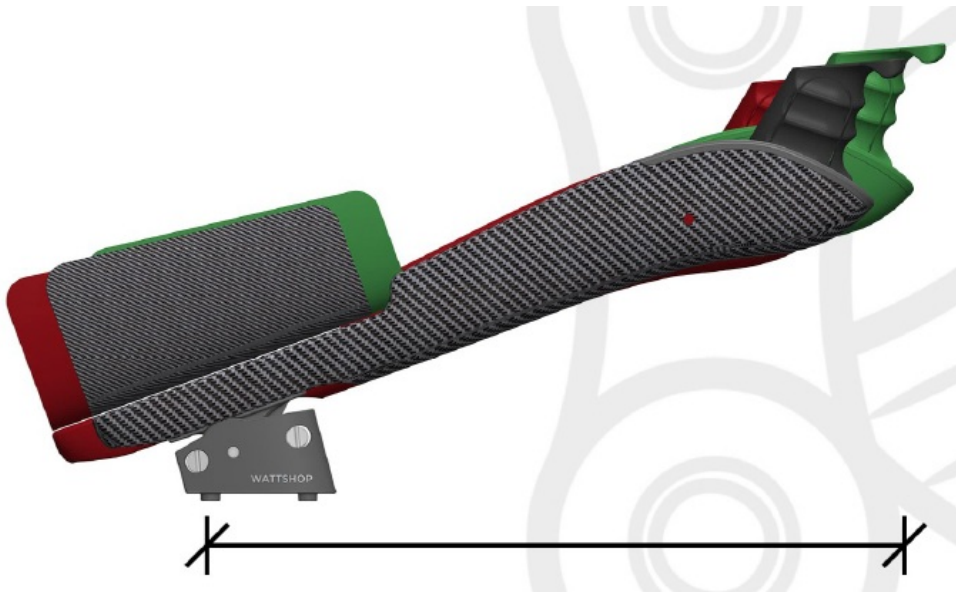
All standard pole handgrips can be trimmed to fit your desired category. Please note the standard pole dimensions

above exclude the shifter.

BRACKET BUILD

REACH

All reach dimensions are measured from the rear riser bolt hold horizontally to the extension tip.



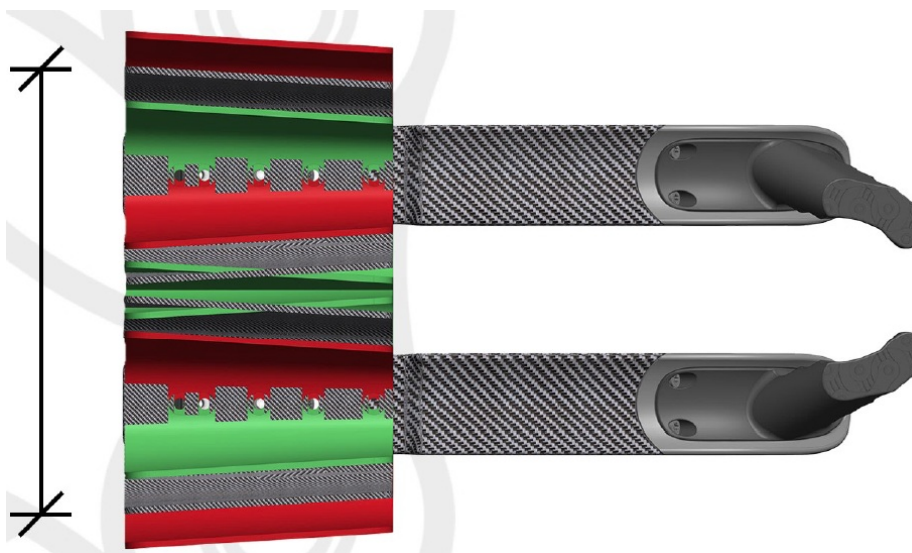
Adjustable Riser	Reach		h Window – XS Brac		ket		Fixed Riser	Reach		Window – X S Brac		ket	
	SP		SP (Long)		Ergo			SP		SP (Long)		Ergo	
	Min	Max	Min	Max	Min	Max		Min	Max	Min	Max	Min	Max
10	249	302	269	323	254	307	10	266	286	286	306	271	291
15	240	293	258	312	243	296	15	256	276	275	295	260	280
20	231	281	247	298	232	283	20	246	266	262	282	248	268
25	219	267	233	281	219	267	25	233	253	247	267	233	253
30	206	251	218	263	204	249	30	218	238	231	251	217	237

Adjust able Ri ser			Reach – M Bracket				Fixed Riser			Reach – M Bracket			
	SP		SP (Long)		Ergo			SP		SP (Long)		Ergo	
	Min	Max	Min	Max	Min	Max		Min	Max	Min	Max	Min	Max
10	289	342	309	363	294	347	10	306	326	326	346	311	331
15	280	333	298	352	283	336	15	296	316	315	335	300	320
20	271	321	287	338	272	323	20	286	306	302	322	288	308
25	259	307	273	321	259	307	25	273	293	287	307	273	293
30	246	291	2S8	303	244	289	30	2S8	278	271	291	257	2 <i>n</i>

Adjustable Riser	Reach		h Window – XL Brac		ket		Reach Window – XL Bracket						
	SP		SP (Long)		Ergo		Fixed Riser	SP		SP (long)		Ergo	
	Min	Max	Min	Max	Min	Max		Min	Max	Min	Max	Min	Max
10	329	382	349	403	334	387	10	346	366	366	386	351	371
15	320	373	338	392	323	376	15	336	356	355	375	340	360
20	311	361	327	378	312	363	20	326	346	342	362	328	348
25	299	347	313	361	299	347	25	313	333	327	347	313	333
30	286	331	298	343	284	329	30	298	318	311	331	297	317

WIDTH

All width dimensions are measured in red from outside to outside at the rear of the each armrest.



Adjustable or Fixed	Armrest Width	
Riser	Min	Max
10	170	240
15	170	240
20	170	240
25	170	240
30	170	240

For armrests widths narrower than 200mm, the inner edge will require trimming. All dimensions are in millimetres (mm) unless otherwise stated.

RISER SELECTION

ADJUSTABLE RISER

The adjustable riser is available in two different options. For the Bracket, build you will have the baseball-specific riser option.

BASEBALL SPECIFIC ADJUSTABLE RISER

These risers have threaded bosses on the underside which provides easy installation and seamless integration with WattShop componentry.



FIXED ANGLED RISER

Designed to provide you with a clean and seamless integration between the user and extension, the fixed angled riser is available in five different angles, each which comes with 2 degrees of toe-in. This may be the preferred option for riders who know their optimal extension angle or want to maximise their position within the UCI regulations.

- 10 DEGREES
- 15 DEGREES
- 20 DEGREES
- 25 DEGREES
- 30 DEGREES



ARMREST+ COMPUTER MOUNT SELECTION

ARMRESTS

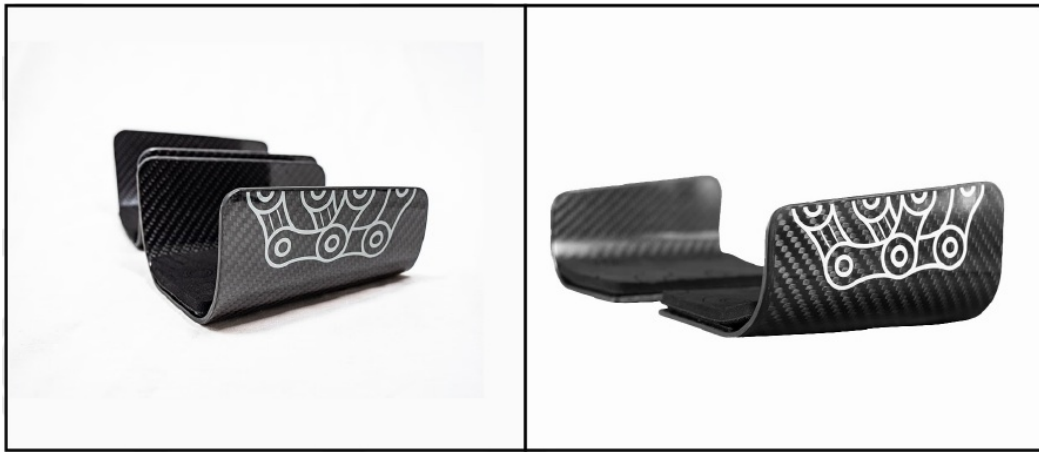
Available in two different styles. Both are slotted to provide width adjustment.

DUAL-SIDED

Each armrest has high-sided inside and outside supporting faces, giving the armrest a “U” shape. We recommend this style of armrest for widths 220mm or wider; this ensures you will benefit from the support of the inside edge.

SINGLE SIDED

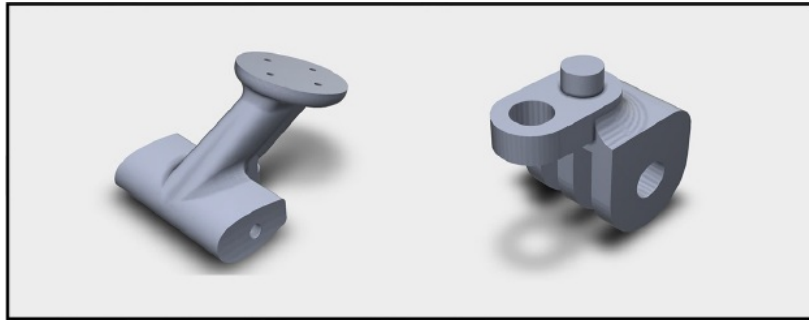
Each armrest has a high-sided outside supporting face. We recommend this for armrest widths less than 220mm. At less than 220mm, your forearms are likely touching, so the benefit of the inside supporting face is reduced.



COMPUTER MOUNT Available in two different options; Garmin and with only one extension interface option.

CROSSBRACE MOUNT

Comes supplied as standard the Bracket computer mount attaches to both extensions to centralise and provide additional strength. GoPro-style accessories are available to allow GoPro and front-light attachments.



BRACKET SELECTION

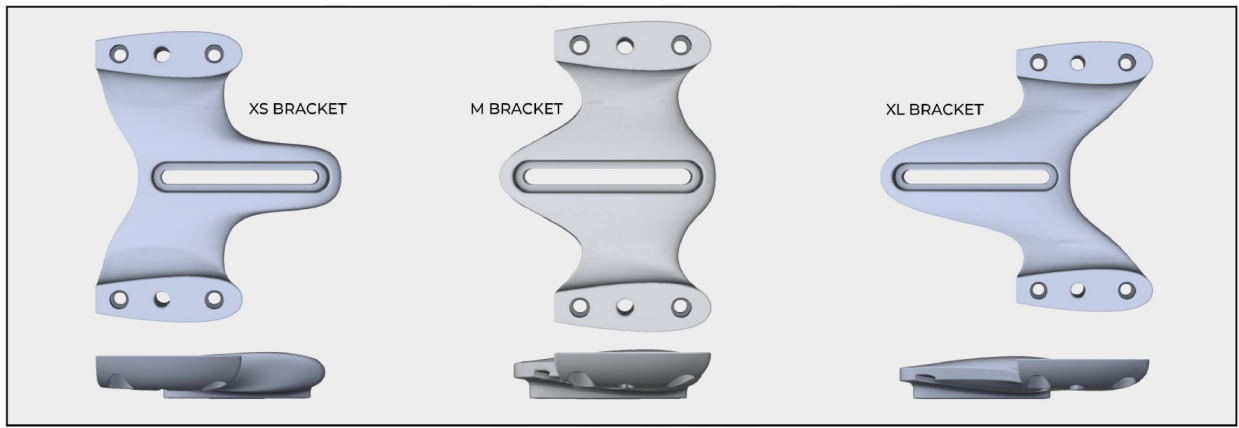
BRACKETS

The mono brackets are available in different sizes, and each bracket offers 20mm of reach adjustment. Your budget will come with the bracket size of your choice. Across the three sizes anywhere used in conjunction with the adjustable rise the system provides a large reach window.

- EXTRA SHORT (XS)
- MEDIUM (M)
- EXTRA LONG (XL)

When used in combination with the fixed angled risers you find yourself between reach sizes as the reach window is reduced. This applies to you, please contact us and we can offer SHORT (S) and LONG (L) brackets.

Please note each bracket is specific to the mounting it is named after. I.E. Shiv Tri brackets are only compatible with Shiv Tri bikes.



- @watt_Shop
- @wattShop
- /shopforwatts
- info@shopforwatts.co.uk
- www.shopforwatts.co.uk

Documents / Resources



[WATTSHOP MK2 Extension Mono Stack](#) [pdf] User Guide

MK2 Extension Mono Stack, MK2, Extension Mono Stack, Mono Stack, Stack

References

- [User Manual](#)

[Manuals+.](#) [Privacy Policy](#)

This website is an independent publication and is neither affiliated with nor endorsed by any of the trademark owners. The "Bluetooth®" word mark and logos are registered trademarks owned by Bluetooth SIG, Inc. The "Wi-Fi®" word mark and logos are registered trademarks owned by the Wi-Fi Alliance. Any use of these marks on this website does not imply any affiliation with or endorsement.