

WATTSHOP Anemoi Mk2 Extension System



WATTSHOP Anemoi Mk2 Extension System Instructions

[Home](#) » [WattShop](#) » WATTSHOP Anemoi Mk2 Extension System Instructions 

Contents

- 1 WATTSHOP Anemoi Mk2 Extension System
- 2 EXTENSION INFORMATION
- 3 BUILD OPTIONS
- 4 HANDGRIP SELECTION
- 5 UCI HAND HEIGHT COMPLIANCE
- 6 STANDARD BUILD
- 7 ANEMOI BASEBAR BUILD
- 8 CONVERSION KIT BUILD
- 9 MOUNT PLATE BUILD
- 10 RISER SELECTION
- 11 CONVERSION SPACER SELECTION
- 12 Documents / Resources
 - 12.1 References



WATTSHOP Anemoi Mk2 Extension System



EXTENSION INFORMATION

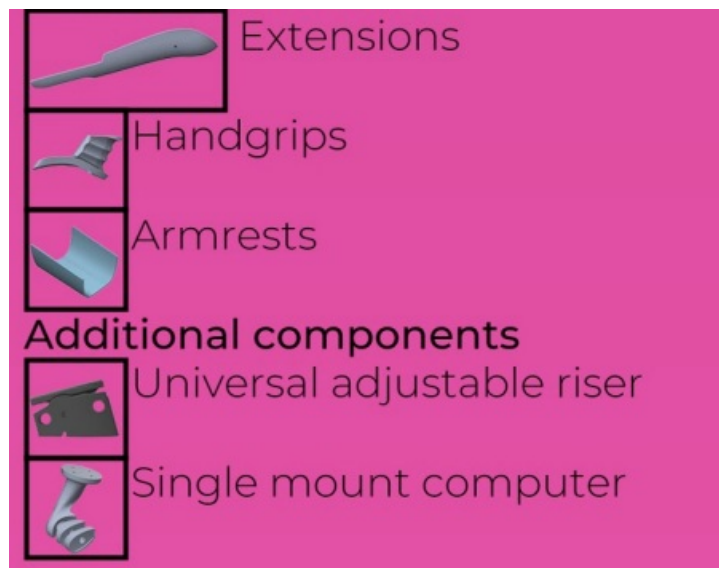
Anemoi Mk2 features include but are not limited to the below



BUILD OPTIONS

Each build option is supplied with three core items; Extensions, Handgrips and Armrests. Additional items supplied are essential but depend on the build option.

STANDARD Core components



Install method

- Utilising the adjustable riser, the risers will fit directly to any flat top riser stack with riser stack fore-aft centres between 15-40mm.
- WattShop Product Compatibility
- This build is not compatible with our
- Anemoi riser stack spacers. To increase stack OEM stack spacers should be used.
- Can be upgraded to the Conversion Kit and Mount Plate builds.

ANEMOI BASEBAR Core components



Install method

- The baseball-specific riser or fixed-angled riser will fit directly to the top of the riser stack.

WattShop Product Compatibility

- Compatible with the complete range of WattShop componentry.
- Due to the controlled lateral centres of this mounting option, our cross-brace BTA mount and computer mount are the optimal choice for this build.

CONVERSION KIT Core components



Install method

- Conversion spacers mount to your baseball or riser stack to convert the centres and profile to enable compatibility.
- The baseball-specific riser or fixed-angled riser will fit directly into the conversion spacer.

WattShop Product Compatibility

- Compatible with the complete range of WattShop componentry.
- Due to the controlled lateral centres of this mounting option, our cross-brace BTA mount and computer mount are the optimal choice for this build.

MOUNT PLATE Core components



Install method

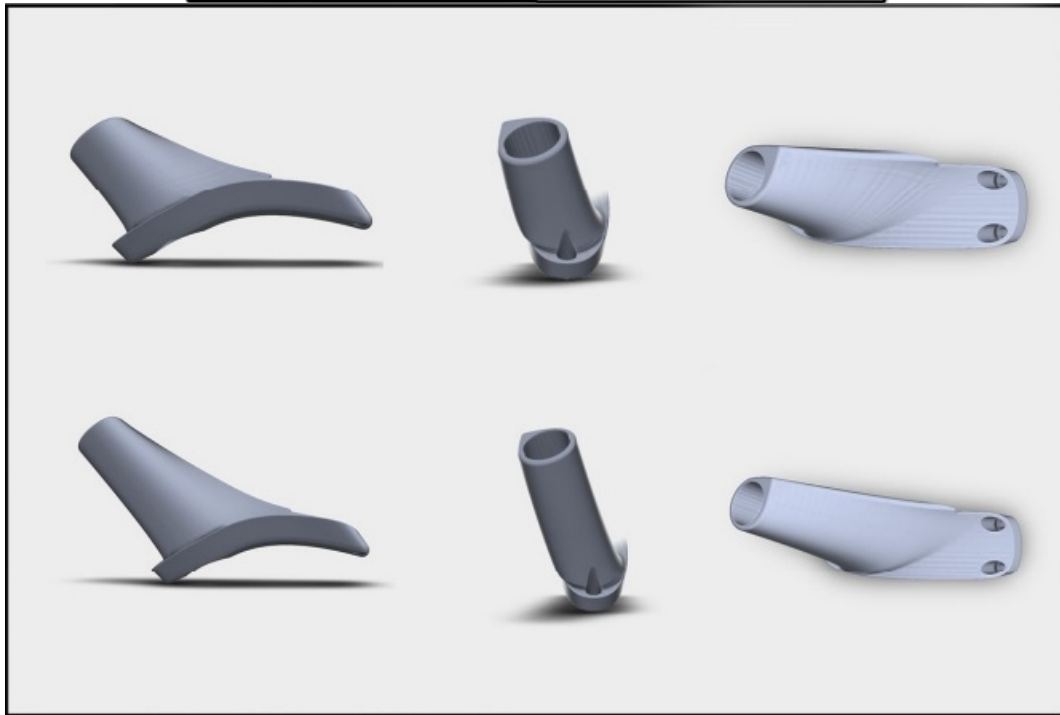
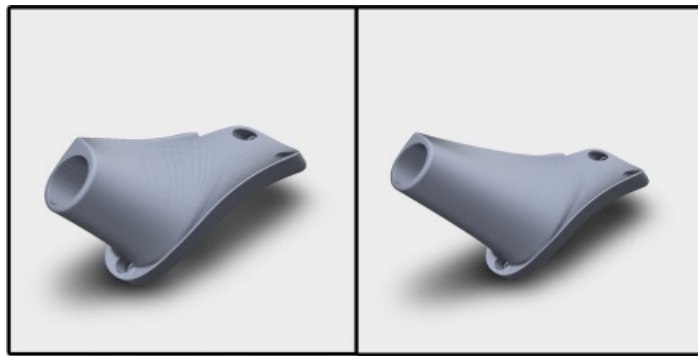
- Mount plates attached to your basebar or riser stack to ensure compatibility and reach adjustment.
- The basebar-specific riser or fixed angled riser will fit directly to the mounting plate.
- WattShop Product Compatibility
- Compatible with the complete range of WattShop componentry.
- Due to the uncontrolled lateral centres of this mounting option, our single-sided BTA mount and computer mount are optimal choices for this build.

HANDGRIP SELECTION

STANDARD POLE + STANDARD POLE (LONG)

The standard pole handgrip mirrors the traditional pole end shifter. It is compatible with the following shifters:

- SHIMANO R9160
- SHIMANO SW671
- SRAM CLICKS



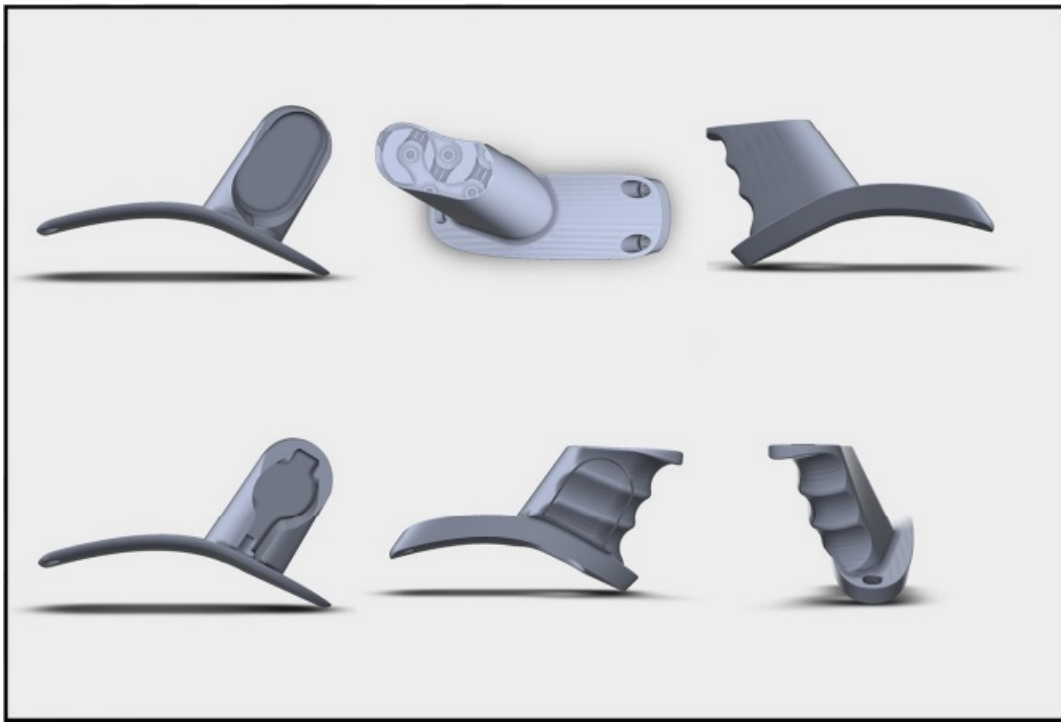
The handgrips will be available in a standard length for athletes competing under UCI regulations who want to maximise their extension angle and a longer length for athletes competing under non-UCI regulated events.

ERGO

The ergo handgrip is available in four different versions. They are named as follows:

- SHIMANO R9150
- SRAM WIRELESS BLIPS
- SRAM WIRED BLIPS
- TRACK





All versions except the track handgrip will be supplied with an inner and outer component. Your shifter button will attach to the inner component whilst the outer component slides over the top. This increases the shifter contact area when shifting.

UCI HAND HEIGHT COMPLIANCE

When competing under UCI regulations you will need to ensure you are compliant with the UCI regulations applicable to your height category.

- **CATEGORY 1** – riders are allowed 100mm mid-point of the armrest to the extension tip.
- **CATEGORY 2** – riders are allowed 120mm mid-point of the armrest to the extension tip.
- **CATEGORY 3** – riders are allowed 140mm mid-point of the armrest to the extension tip.
- **NON-CATEGORY** – riders are allowed 100mm mid-point of the armrest to the extension tip.

Please note that mid-point to extension tip measurements are measured vertically. All accessories are included in these dimensions.



- COMPLIANT
- CONDITIONS APPLY
- NON-COMPLIANT

UCI NON-CATEGORY				
Riser Angle	Handgrip			
	Ergo	Ergo (Track)	Standard Pole	Standard Pole (Long)
10	79	79	74	94
15	100	100	98	119
20	120	120	120	143
25	139	139	142	166
30	158	158	162	188

UCI CATEGORY 2				
Riser Angle	Handgrip			
	Ergo	Ergo (Track)	Standard Pole	Standard Pole (Long)
10	79	79	74	94
15	100	100	98	119
20	120	120	120	143
25	139	139	142	166
30	158	158	162	188

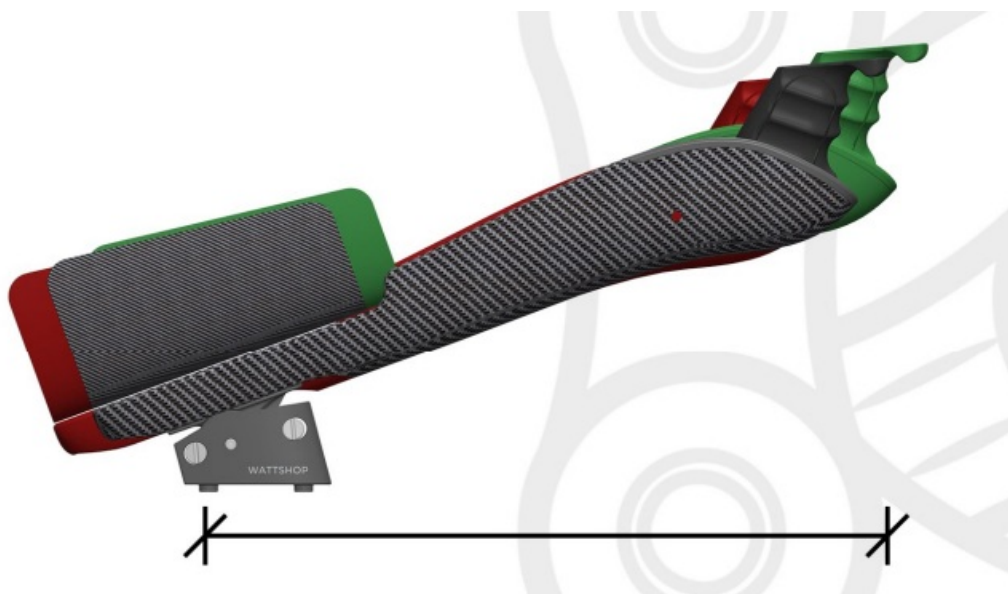
UCI CATEGORY 1				
Riser Angle	Handgrip			
	Ergo	Ergo (Track)	Standard Pole	Standard Pole (Long)
10	79	79	74	94
IS	100	100	98	119
20	120	120	120	143
2S	139	139	142	166
30	158	158	162	188

UCI CATEGORY 3				
Riser Angle	Handgrip			
	Ergo	Ergo (Track)	Standard Pole	Standard Pole (Long)
10	79	79	74	94
IS	100	100	98	119
20	120	120	120	143
25	139	139	142	166
30	158	158	162	188

STANDARD BUILD

IMPORTANT – The fixed angled risers and baseball-specific risers are not compatible with the standard build option.

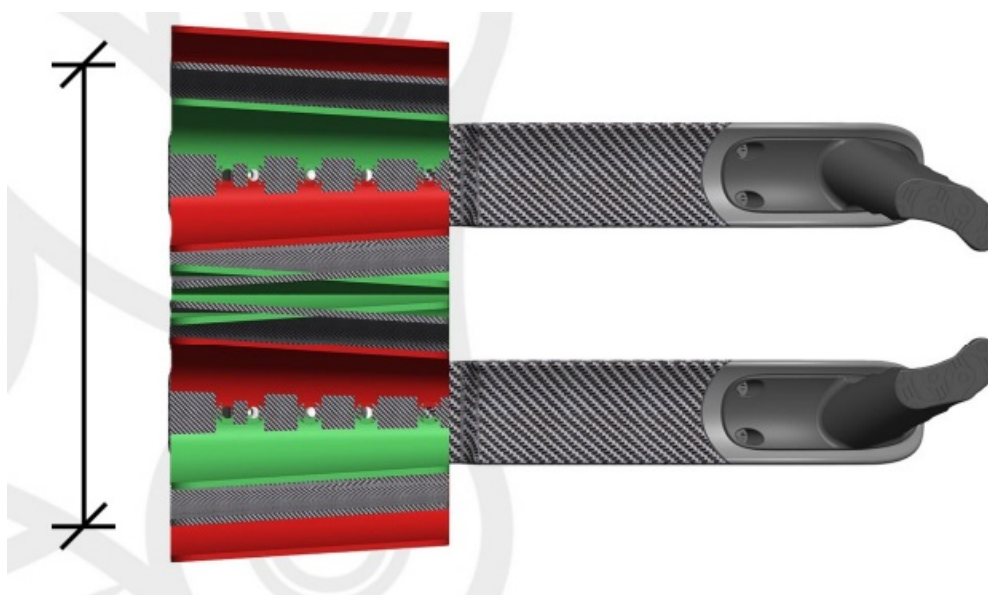
REACH: All reach dimensions are measured from the rear riser bolt hole horizontally to the extension tip.



Adjustable Riser	Reach Window					
	SP		SP (Long)		Ergo	
	Min	Max	Min	Max	Min	Max
10	289	322	309	343	294	327
15	280	313	298	332	283	316
20	271	301	287	318	272	303
25	259	287	273	301	259	287
30	246	271	258	283	244	269

WIDTH

All width dimensions are measured from outside to outside at the rear of each armrest.



Adjustable Riser	Armrest Width (lateral c-c +/-)	
	Min	Max
10	+65	+135
15	+65	+135
20	+65	+135
25	+65	+135
30	+65	+135

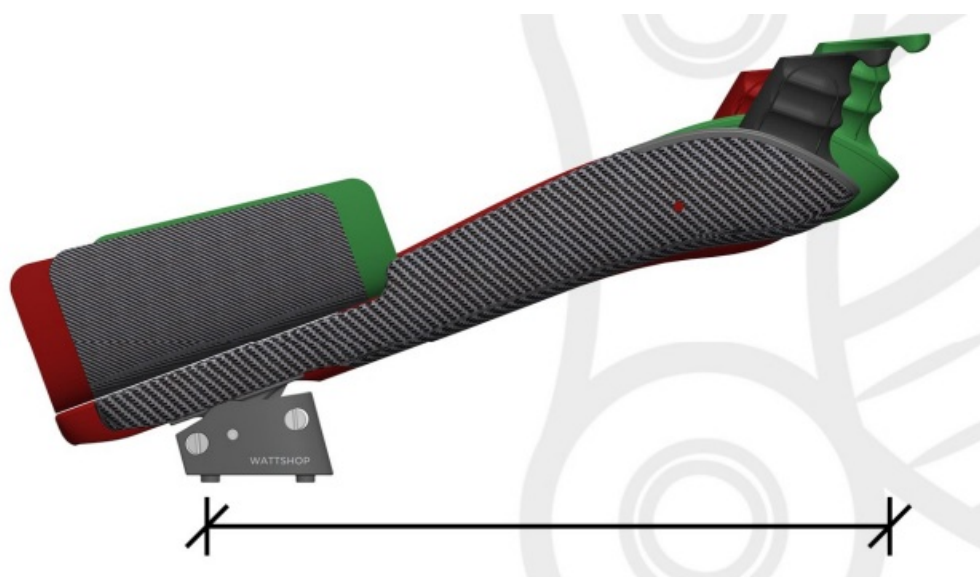
EXAMPLE (lateral c-c)	Armrest Width	
	Min	Max
105	170	240
110	175	245
115	180	250
120	185	255
125	190	260
130	195	265
135	200	270
140	205	275

For armrest widths narrower than 200mm the inner edge will require trimming.

ANEMOI BASEBAR BUILD

IMPORTANT – Mount plates are not compatible with the Anemoi baseball build option.

REACH: All reach dimensions are measured from the rear riser bolt hole horizontally to the extension tip.

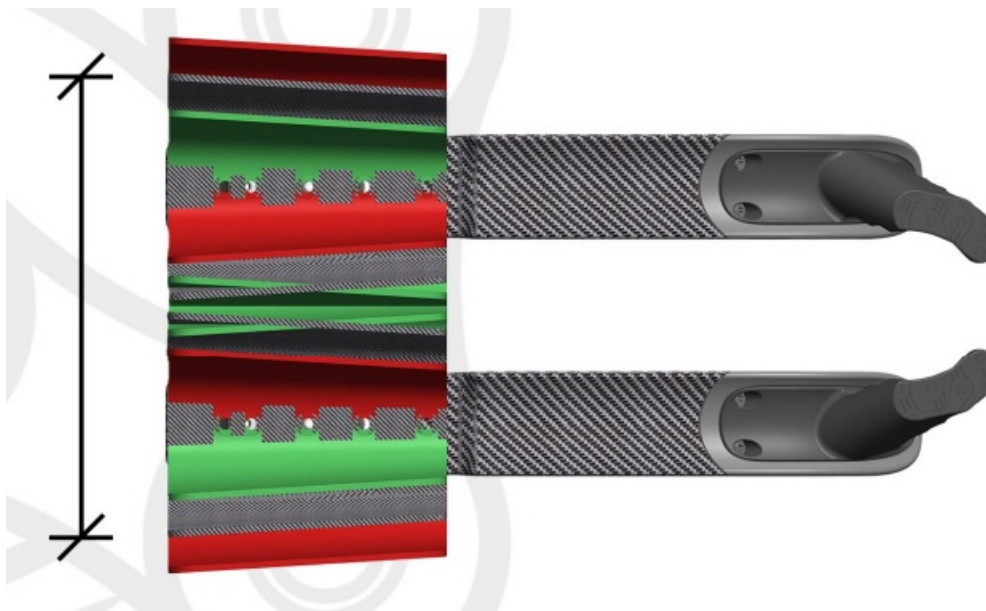


Adjustable Riser	Reach Window					
	SP		SP (Long)		Ergo	
	Min	Max	Min	Max	Min	Max
10	289	322	309	343	294	327
15	280	313	298	332	283	316
20	271	301	287	318	272	303
25	259	287	273	301	259	287
30	246	271	258	283	244	269

Fixed Riser	Reach		
	SP	SP/L	Ergo
10	306	326	311
15	296	315	300
20	286	302	288
25	273	287	273
30	258	271	257

WIDTH

All width dimensions are measured from outside to outside at the rear of each armrest.



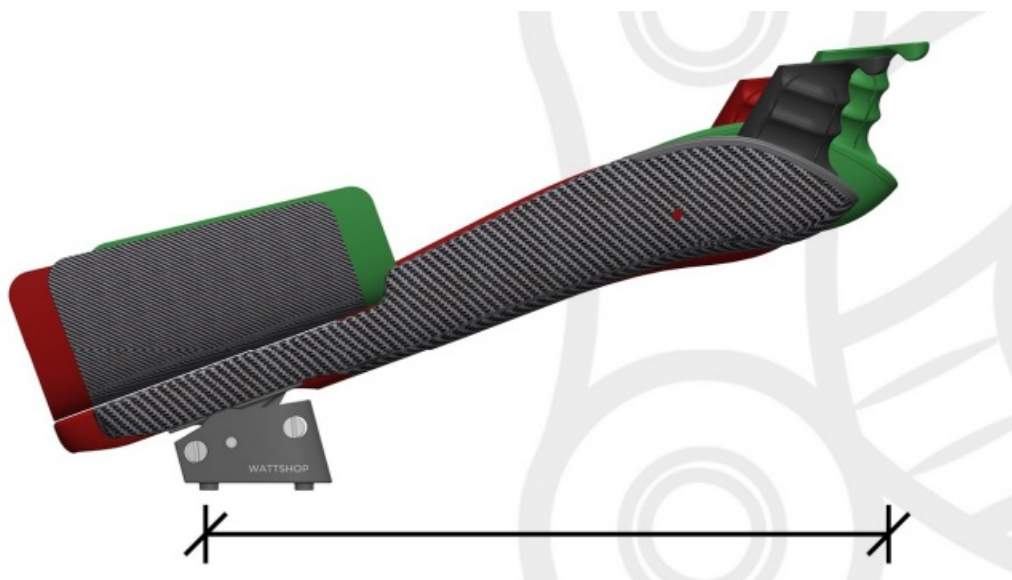
Adjustable or Fixed	Armrest Width	
	Min	Max
Riser		
10	170	240
15	170	240
20	170	240
25	170	240
30	170	240

For armrest widths narrower than 200mm the inner edge will require trimming.

CONVERSION KIT BUILD

REACH

All reach dimensions are measured from the rear riser bolt hole horizontally to the extension tip.

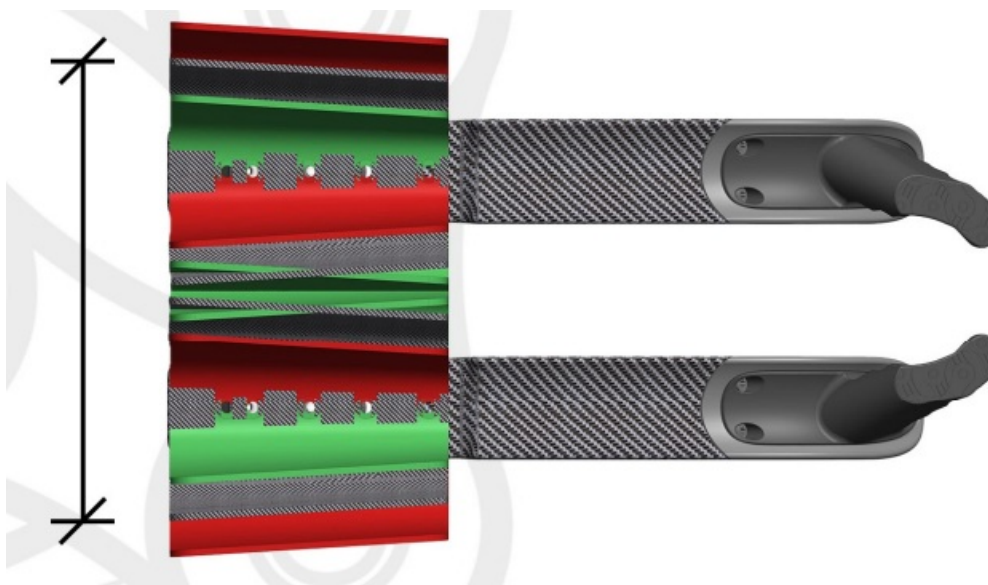


Adjustable Riser	Reach Window					
	SP		SP (Long)		Ergo	
	Min	Max	Min	Max	Min	Max
10	289	322	309	343	294	327
15	280	313	298	332	283	316
20	271	301	287	318	272	303
25	259	287	273	301	259	287
30	246	271	258	283	244	269

Fixed Riser	Reach		
	SP	SP/L	Ergo
10	306	326	311
15	296	315	300
20	286	302	288
25	273	287	273
30	258	271	257

WIDTH

All width dimensions are measured from outside to outside at the rear of each armrest.



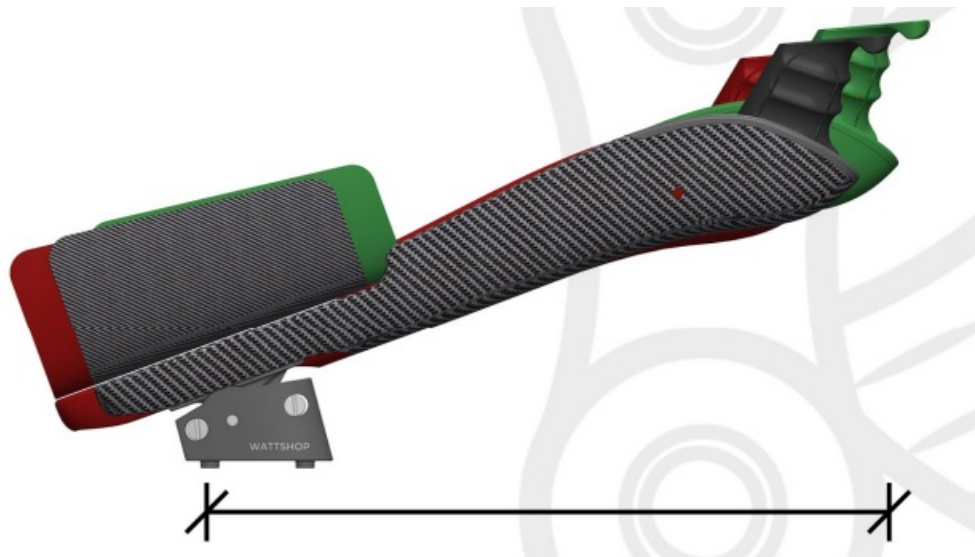
Adjustable or Fixed	Armrest Width	
	Min	Max
Riser		
10	170	240
15	170	240
20	170	240
25	170	240
30	170	240

For armrest widths narrower than 200mm the inner edge will require trimming. All dimensions are in millimetres (mm) unless otherwise stated.

MOUNT PLATE BUILD

IMPORTANT – The mount plate build option is only compatible with flat-top riser stacks. NB – the reach tables show dimensions based on a 25mm bolt centre. Different bolt centres will change the reach window.

REACH: All reach dimensions are measured from the rear riser bolt hole horizontally to the extension tip.



2Smmc-c	Reach Window – Long Plate (Reverse)					
Adjustable Riser	SP		SP(Long)		Ergo	
	Min	Ma,	Min	Ma,	Min	Ma,
10	234	302	254	m	239	307
15	225	293	243	312	228	296
20	216	281	232	298	217	283
25	204	267	218	281	204	267
30	191	251	203	263	189	249
2Smmc-c	Reach Window – Short Plate (Reverse)					
Adjustable Riser	SP		SP(Long)		Ergo	
	Min	Ma,	Min	Ma,	Min	Ma,
10	254	322	274	343	259	327
15	245	313	263	332	248	316
20	236	301	252	318	237	303
25	224	287	238	301	224	287
30	211	271	223	283	209	269
2Smmc-c	Reach Window – Short Plate					
Adjustable Riser	SP		SP(Long)		Ergo	
	Min	Ma,	Min	Ma<	Min	Ma<
10	274	342	294	363	279	347

15	265	m	283	352	268	336
20	256	321	<i>m</i>	338	257	m
25	244	307	258	321	244	307
30	231	291	243	303	229	289
2Smmc-c	Reach Window • Long Plate					
Adjustable Riser	SP		SP(Long)		Ergo	
	Min	Ma<	Min	Ma,	Min	Ma<
10	294	362	314	383	299	367
15	285	353	303	372	288	356
20	276	341	292	358	277	343
25	264	327	278	341	264	327
30	251	311	263	m	249	309

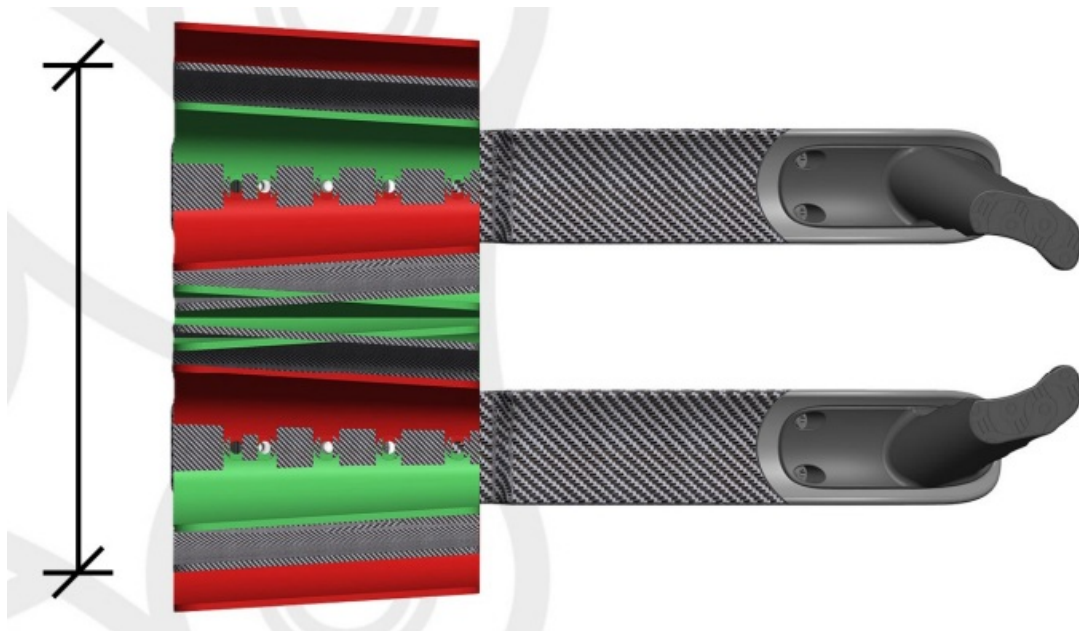
25mm c-c	Reach Window - Long Plate (Reverse)					
Fixed Riser	SP		SP (Long)		Ergo	
	Min	Max	Min	Max	Min	Max
10	251	286	271	306	256	291
15	241	276	260	295	245	280
20	231	266	247	282	233	268
25	218	253	232	267	218	253
30	203	238	216	251	202	237

25mm c-c	Reach Window - Short Plate (Reverse)					
Fixed Riser	SP		SP (Long)		Ergo	
	Min	Max	Min	Max	Min	Max
10	271	306	291	326	276	311
15	261	296	280	315	265	300
20	251	286	267	302	253	288
25	238	273	252	287	238	273
30	223	258	236	271	222	257

25mm c-c	Reach Window - Short Plate					
Fixed Riser	SP		SP (Long)		Ergo	
	Min	Max	Min	Max	Min	Max
10	291	326	311	346	296	331
15	281	316	300	335	285	320
20	271	306	287	322	273	308
25	258	293	272	307	258	293
30	243	278	256	291	242	277

25mm c-c	Reach Window - Long Plate					
Fixed Riser	SP		SP (Long)		Ergo	
	Min	Max	Min	Max	Min	Max
10	311	346	331	366	316	351
15	301	336	320	355	305	340
20	291	326	307	342	293	328
25	278	313	292	327	278	313
30	263	298	276	311	262	297

WIDTH: All width dimensions are measured from outside to outside at the rear of each armrest.



Adjustable	Armrest Width (lateral c-c +/-)			
orFixed Riser	Inboard		Outboard	
	Min	Max	Min	Max
10	+30	+100	+100	+170
15	+30	+100	+100	+170
20	+30	+100	+100	+170
25	+30	+100	+100	+170
30	+30	+100	+100	+170

EXAMPLE	Armrest Width			
	Inboard		Outboard	
(lateral c-c)	Min	Max	Min	Max
105	135	205	205	275
110	140	210	210	280
115	145	215	215	285
120	150	220	220	290
125	155	225	225	295
130	160	230	230	300
135	165	235	235	305
140	170	240	240	310

For armrest widths narrower than 200mm the inner edge will require trimming. All dimensions are in millimetres (mm) unless otherwise stated.

RISER SELECTION

• ADJUSTABLE RISER

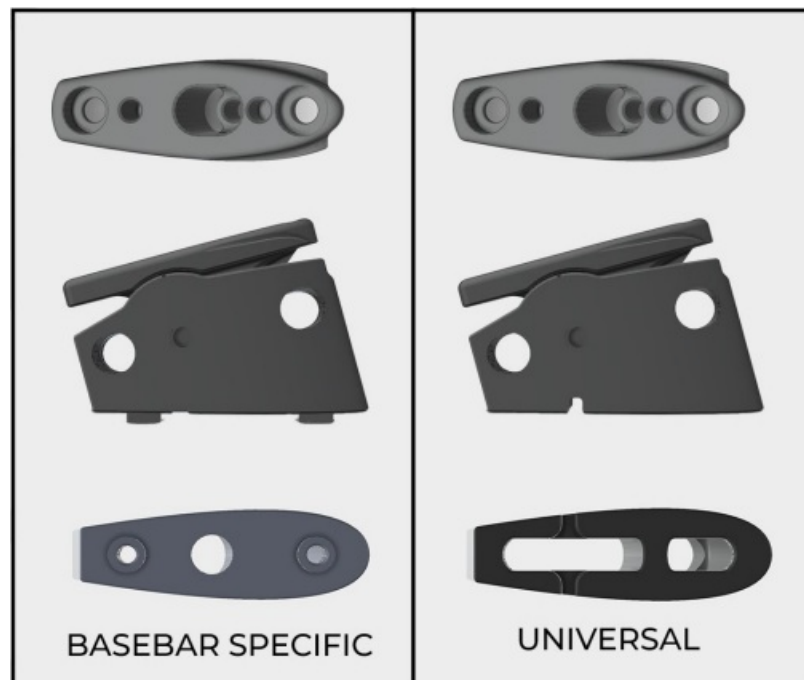
- The adjustable riser is available in two different options. Which option you receive will depend on your build selection.

• UNIVERSAL ADJUSTABLE RISER

- You will receive this riser with the Standard build option only. The universal risers are slotted on the underside. With the use of our barrel nuts, these risers can be installed onto a variety of flat-top riser stacks that have bolt centers between 15-40mm.

• BASEBALL SPECIFIC ADJUSTABLE RISER

- You will receive this option if you have selected the Anemoi Basebar, Conversion Kit or Mount Plate build.
- These risers have threaded bosses on the underside which provides easier installation and seamless integration with WattShop componentry.



FIXED ANGLED RISER

Designed to provide you with a clean and seamless integration between riser and extension, the fixed-angled riser is available in five different angles, each of which comes with 2 degrees of toe-in. This may be the preferred option for riders who know their optimal extension angle or want to maximise their position within the UCI regulations.

- 10 DEGREES
- 15 DEGREES
- 20 DEGREES
- 25 DEGREES
- 30 DEGREES



These risers are only compatible with the Anemoi Basebar, Conversion Kit or Mount Plate builds.

ARMREST + COMPUTER MOUNT SELECTION

• ARMRESTS

- Available in two different styles. Both are slotted to provide width adjustment.

• DUAL-SIDED

- Each armrest has a high-sided inside and outside supporting faces, giving the armrest a “U” shape. We recommend this style of armrests for widths 220mm or wider this ensures you will benefit from the support of the inside edge.

• SINGLE SIDED

- Each armrest has a high-sided outside supporting face. We recommend this for armrest widths less than 220mm. At less than 220mm your forearms are likely touching so the benefit of the inside supporting face is reduced.



COMPUTER MOUNT

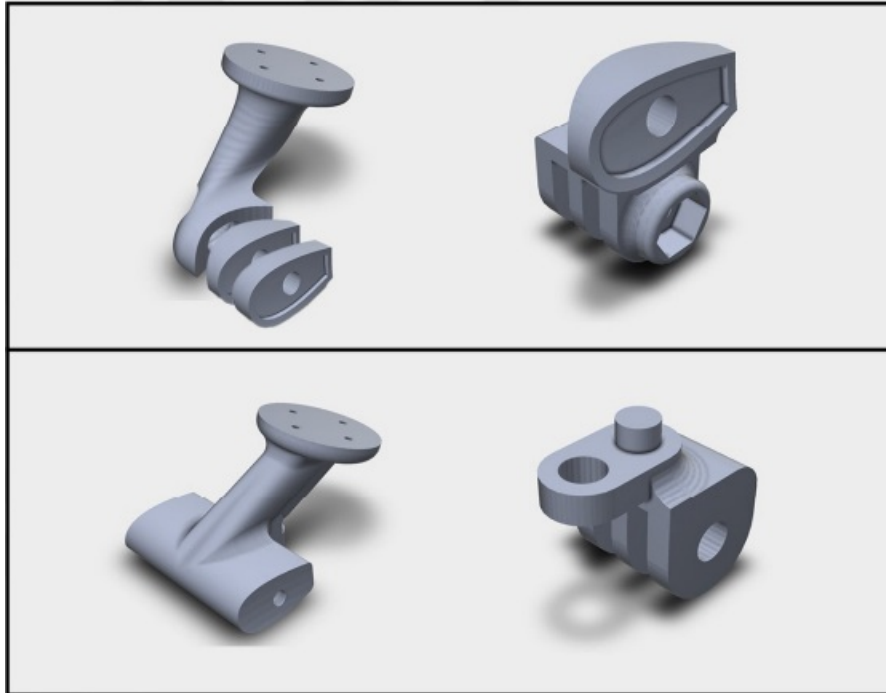
- Available in two different options; Garmin and Wahoo and in two different extension interface options.

SINGLE MOUNT

- This option will come supplied as standard with the Standard and Mount Plate built options. It attaches to the left-hand extension only, hence a single mount. 5mm spacers can be used to move the computer mount further away from the extension if needed.
- You also can adjust your toe.

CROSSBRACE MOUNT

- Comes supplied as standard with all Anemoi Basebar or Conversion Kit builds.
- This computer mount attaches to both extensions to centralise and provide additional strength.
- GoPro-style accessories are available for both GoPro and front-light attachments.



CONVERSION SPACER SELECTION

• CONVERSION SPACER

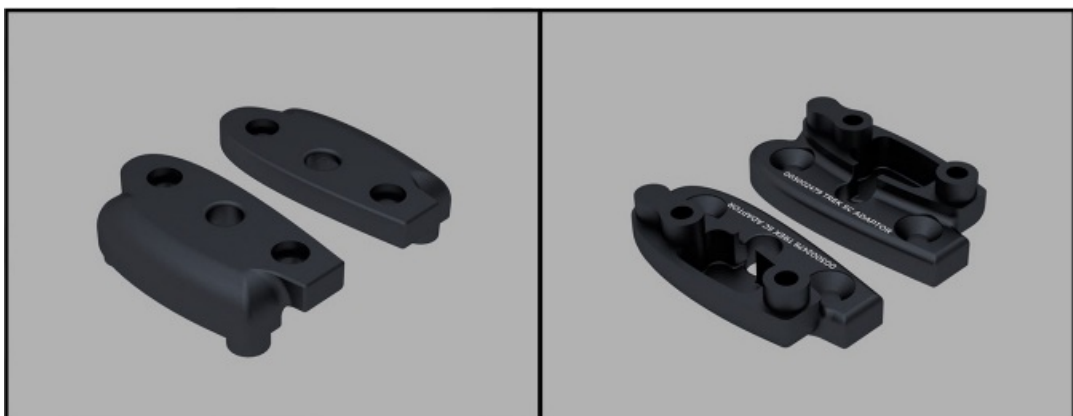
- Designed to accommodate various basebars and riser stacks, our spacers are precision-matched to stock riser profiles for a visually cohesive integration of our Anemoi component range.

• INTEGRATION

- Profile-matched to your existing riser stacks, ensuring seamless integration between your base bar and the Anemoi product range.

• OPTIMAL LATERAL STACK CENTRES

- Bring uniformity to your riser stack lateral centres. Converting your existing riser stack lateral centres to 105mm. This alignment ensures your extension poles are centred on your forearm.
- Our range of Conversion Spacers is continually expanding however if you don't see your model of baseball in the list please get in contact.



- TREK SPEED CONCEPT – TOP AND UNDERSIDE VIEW

FOLLOW US

- **TWITTER** @Watt_Shop
- **INSTAGRAM** @WattShop
- **FACEBOOK** /shopforwatts
- **E: MAIL** info@shopforwatts.co.uk.
- **WEB:** www.shopforwatts.co.uk.

Documents / Resources



[WATTSHOP Anemoi Mk2 Extension System](#) [pdf] Instructions

Anemoi Mk2 Extension System, Anemoi Mk2, Anemoi, Mk2 Extension System, Anemoi Extension System, Extension System, Extension

References

- [User Manual](#)

Manuals+, Privacy Policy

This website is an independent publication and is neither affiliated with nor endorsed by any of the trademark owners. The "Bluetooth®" word mark and logos are registered trademarks owned by Bluetooth SIG, Inc. The "Wi-Fi®" word mark and logos are registered trademarks owned by the Wi-Fi Alliance. Any use of these marks on this website does not imply any affiliation with or endorsement.