



WATTSHOP Anemoi
MK2 Extension Dual
Stack

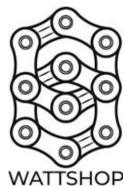


WATTSHOP Anemoi MK2 Extension Dual Stack Instruction Manual

[Home](#) » [WattShop](#) » WATTSHOP Anemoi MK2 Extension Dual Stack Instruction Manual 

Contents

- 1 WATTSHOP Anemoi MK2 Extension Dual Stack
- 2 EXTENSION INFORMATION
- 3 EXTENSION DIMENSIONS
- 4 BUILD OPTIONS
- 5 HANDGRIP SELECTION STANDARD POLE+
- 6 UCI HAND HEIGHT COMPLIANCE
- 7 STANDARD BUILD
- 8 CONVERSION KIT BUILD
- 9 RISER SELECTION
- 10 ARMREST+ COMPUTER MOUNT SELECTION
- 11 Documents / Resources
 - 11.1 References
- 12 Related Posts



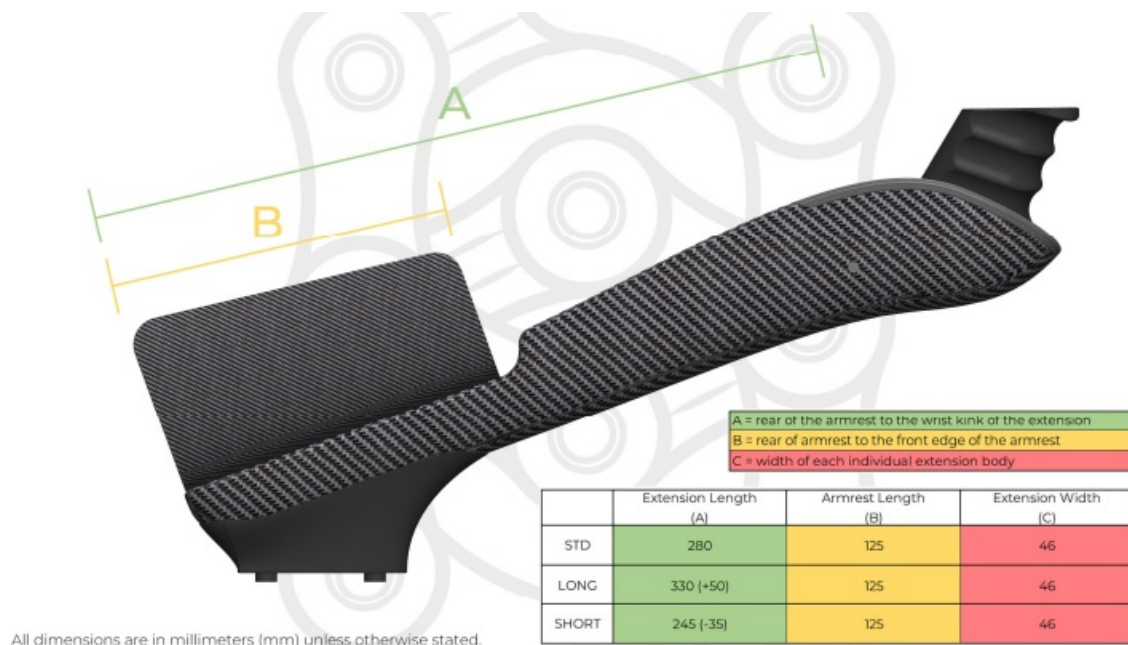
WATTSHOP Anemoi MK2 Extension Dual Stack



EXTENSION INFORMATION



EXTENSION DIMENSIONS



All dimensions are in millimeters (mm) unless otherwise stated.

A comparable dimension for the extension length is measuring your elbow to wrist kink dimension. This will inform you as to where your elbow will sit in relation to the rear of the armrest. I.E if your elbow will sit “off the back” of the armrest.

BUILD OPTIONS

Each build option is supplied with three core items; Extensions, Handgrips and Armrests. Additional items supplied are essential but depend on the build option.

STANDARD

- Core components
- Extensions
- Additional components
- Universal adjustable riser Single mount computer

Install method

Utilising the adjustable riser, the risers will fit directly to any flat top riser stack with riser stack fore-aft centres between 15-40mm. WattShop Product Compatibility This build is not compatible with our Anemoi riser stack spacers. To increase stack OEM stack spacers should be used. Can be upgraded to the Conversion Kit and Mount Plate builds.

ANEMOI BASEBAR

- Core components
- Extensions
- Additional components
- Basebar-specific adjustable riser or , fixed angled riser
- Crossbrace computer mount

Install method

The basebar-specific riser or fixed angled riser will fit directly to the top of the riser stack.

WattShop Product Compatibility Compatible with the complete range of WattShop componentry.
Due to the controlled lateral centres of this mounting option our crossbrace BTA mount and computer mount are the optimal choice for this build.

CONVERSION KIT

Core components

- Extensions
- Handgrips
- Armrests
- Additional components
- Basebar-specific adjustable riser or fixed angled riser Crossbrace computer mount
- Conversion spacers

Install method

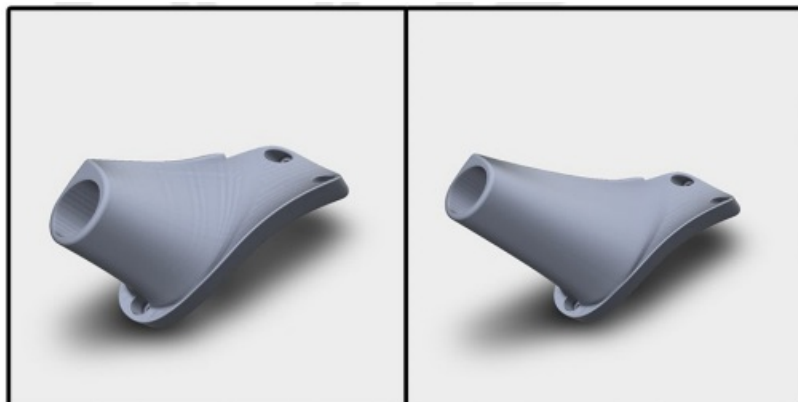
- Conversion spacers mount to your basebar or riser stack to convert the centres and profile to enable compatibility.
- The basebar-specific riser or fixed angled riser will fit directly to the conversion spacer.
- WattShop Product Compatibility Compatible with the complete range of WattShop componentry.
- Due to the controlled lateral centres of this mounting option our crossbrace BTA mount and computer mount are the optimal choice for this build.

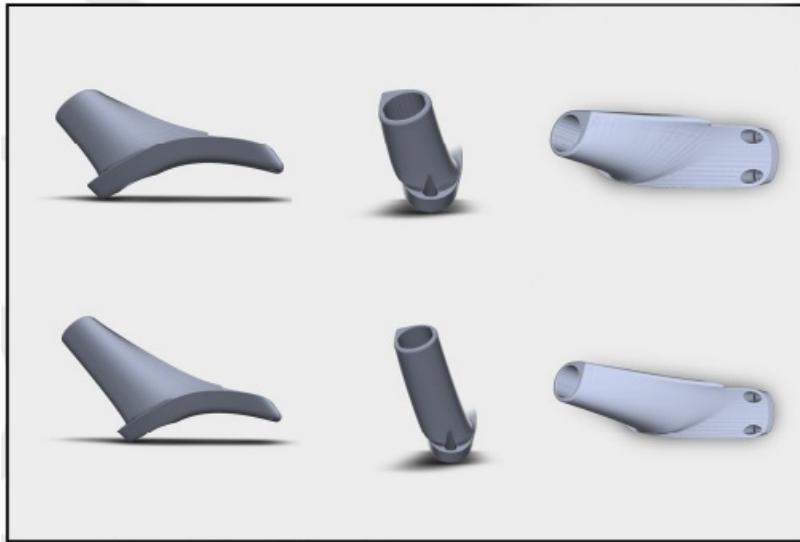
HANDGRIP SELECTION STANDARD POLE+

STANDARD POLE (LONG)

The standard pole handgrip mirrors the traditional pole end shifter. It is compatible with the following shifters:

- SHIMANO R9160
- SHIMANO SW671
- SRAM cues



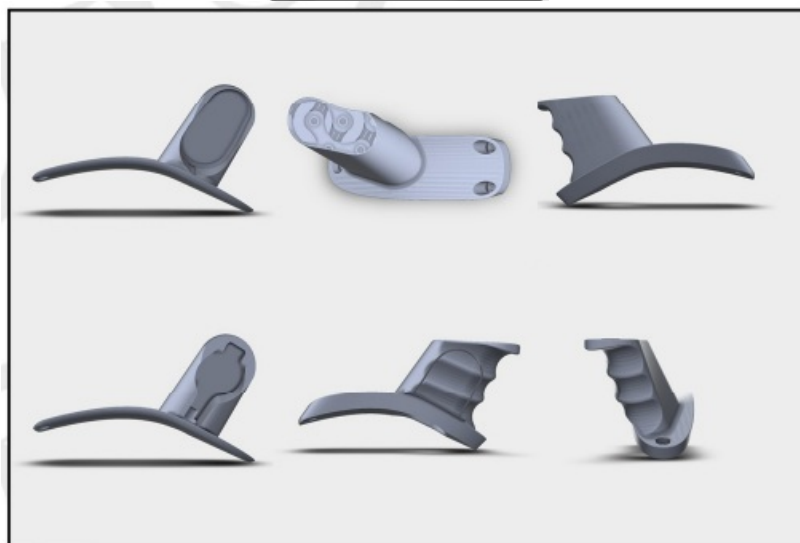


The handgrips will be available in a standard length for athletes competing under UCI regulations who want to maximise their extension angle, and a longer length for athletes competing under non-UCI regulated events.

ERGO

The ergo handgrip is available in four different versions. They are named as following:

- SHIMANO R9150
- SRAM WIRELESS BLIPS
- SRAM WIRED BLIPS
- TRACK



All versions with exception of the track handgrip will be supplied with an inner and outer component. Your shifter button will attach to the inner componentry whilst the outer component slides over the top. This increases the shifter contact area when shifting.

UCI HAND HEIGHT COMPLIANCE

When competing under UCI regulations you will need to ensure you are compliant with the UCI regulations applicable to your height category.

1. CATEGORY 1 – riders are allowed 700mm mid-point of the armrest to the extension tip.
2. CATEGORY 2 – riders are allowed 720mm mid-point of the armrest to the extension tip.
3. CATEGORY 3 – riders are allowed 740mm mid-point of the armrest to the extension tip.

NON-CATEGORY – riders are allowed 700mm mid-point of the armrest to the extension tip.

Please note mid-point to extension tip measurements are measured vertically All accessories are included in these dimensions.



UCI NON CATEGORY									
Riser Angle	Handgrip + Extension Length								
	Ergo			Standard Pole			Standard Pole (Long)		
	Standard	Long	Short	Standard	Long	Short	Standard	Long	Short
10	68	82	61	66	80	59	86	100	78
15	90	108	81	90	108	80	111	129	102
20	112	134	100	113	135	101	136	158	124
25	135	162	123	134	161	121	159	185	146
30	159	188	147	156	185	144	182	211	166

UCI CATEGORY 2									
Riser Angle	Handgrip + Extension Length								
	Ergo			Standard Pole			Standard Pole (Long)		
	Standard	Long	Short	Standard	Long	Short	Standard	Long	Short
10	68	82	61	66	80	59	86	100	78
15	90	108	81	90	108	80	111	129	102
20	112	134	100	113	135	101	136	158	124
25	135	162	123	134	161	121	159	185	146
30	159	188	147	156	185	144	182	211	166

UCI CATEGORY 1									
Riser Angle	Handgrip + Extension Length								
	Ergo			Standard Pole			Standard Pole (Long)		
	Standard	Long	Short	Standard	Long	Short	Standard	Long	Short
10	68	82	61	66	80	59	86	100	78
15	90	108	81	90	108	80	111	129	102
20	112	134	100	113	135	101	136	158	124
25	135	162	123	134	161	121	159	185	146
30	159	188	147	156	185	144	182	211	166

UCI CATEGORY 3									
Riser Angle	Handgrip + Extension Length								
	Ergo			Standard Pole			Standard Pole (Long)		
	Standard	Long	Short	Standard	Long	Short	Standard	Long	Short
10	68	82	61	66	80	59	86	100	78
15	90	108	81	90	108	80	111	129	102
20	112	134	100	113	135	101	136	158	124
25	135	162	123	134	161	121	159	185	146
30	159	188	147	156	185	144	182	211	166

All dimensions are in millimeters (mm) unless otherwise stated.

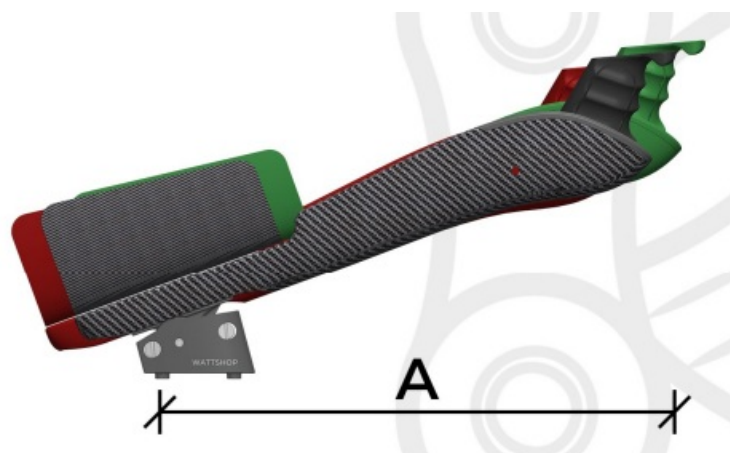
Standard = Standard extensions. Long = Long extensions. Short= Short extensions.

All standard pole handgrips can be trimmed to fit your desired category. Please note the standard pole dimensions above are excluding the shifter

STANDARD BUILD

REACH

All reach dimensions are measured from the rear riser bolt hole horizontally to the extension tip.

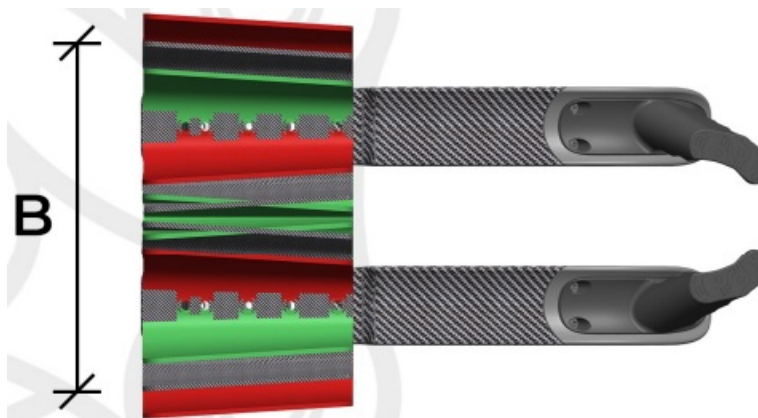


STANDARD	Adjustable Riser (Degrees)	Reach Window (A)					
		SP		SP (Long)		Ergo	
		Min	Max	Min	Max	Min	Max
	10	289	322	309	343	294	327
	15	280	313	298	332	283	316
	20	271	301	287	318	272	303
	25	259	287	273	301	259	287
	30	246	271	258	283	244	269

LONG	Adjustable Riser (Degrees)	Reach Window (A)					
		SP		SP (Long)		Ergo	
		Min	Max	Min	Max	Min	Max
	10	336	370	356	391	343	377
	15	326	360	344	378	332	366
	20	313	346	330	362	318	351
	25	298	330	313	344	303	334
	30	281	311	293	324	285	315

WIDTH

All width dimensions are measured from outside to outside at the rear of each armrest.

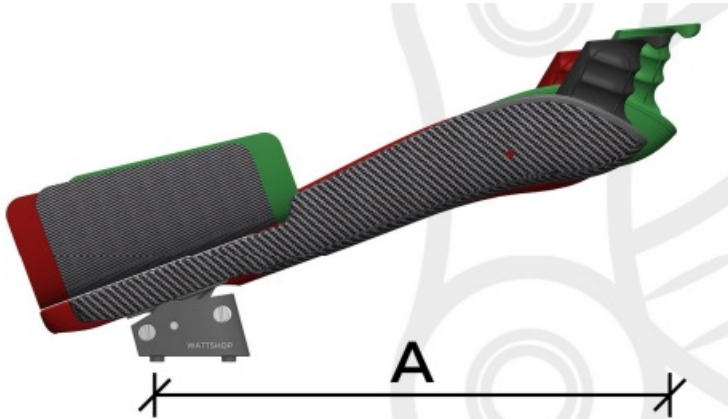


SHORT	Adjustable Riser (Degrees)	Reach Window (A)					
		SP		SP (Long)		Ergo	
		Min	Max	Min	Max	Min	Max
	10	262	297	283	317	269	304
	15	254	288	273	307	260	294
	20	244	278	261	294	249	282
	25	232	264	247	279	237	269
	30	219	249	231	262	223	253

ANEMOI BASEBAR BUILD

REACH

All reach dimensions are measured from the rear riser bolt hole horizontally to the extension tip.

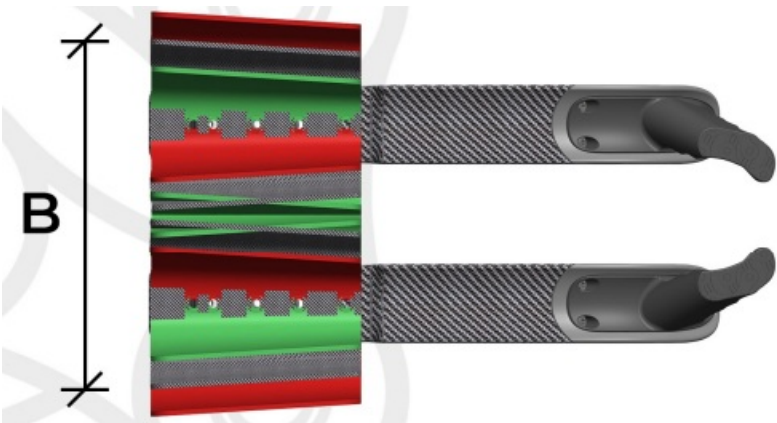


Adjustable Riser (Degrees)	Armrest Width (B) (lateral c-c +/-)	
	Min	Max
10	+65	+135
15	+65	+135
20	+65	+135
25	+65	+135
30	+65	+135

EXAMPLE (lateral c-c)	Armrest Width (B)	
	Min	Max
105	170	240
110	175	245
115	180	250
120	185	255
125	190	260
130	195	265
135	200	270
140	205	275

WIDTH

All width dimensions are measured from outside to outside at the rear of each armrest



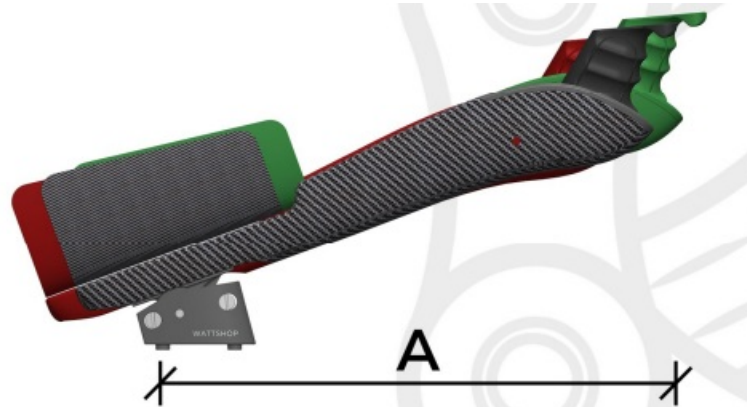
STANDARD	Adjustable Riser (Degrees)	Reach Window (A)						Fixed Riser (Degrees)	Reach Window (A)		
		SP		SP (Long)		Ergo			SP	SP/L	Ergo
		Min	Max	Min	Max	Min	Max				
	10	289	322	309	343	294	327	10	322	343	327
	15	280	313	298	332	283	316	15	313	332	316
	20	271	301	287	318	272	303	20	301	318	303
	25	259	287	273	301	259	287	25	287	301	287
	30	246	271	258	283	244	269	30	271	283	269

LONG	Adjustable Riser (Degrees)	Reach Window (A)						Fixed Riser (Degrees)	Reach Window (A)		
		SP		SP (Long)		Ergo			SP	SP/L	Ergo
		Min	Max	Min	Max	Min	Max				
	10	336	370	356	391	343	377	10	370	391	377
15	326	360	344	378	332	366	15	360	378	366	
20	313	346	330	362	318	351	20	346	362	351	
25	298	330	313	344	303	334	25	330	344	334	
30	281	311	293	324	285	315	30	311	324	315	

CONVERSION KIT BUILD

REACH

All reach dimensions are measured from the rear riser bolt hole horizontally to the extension tip.

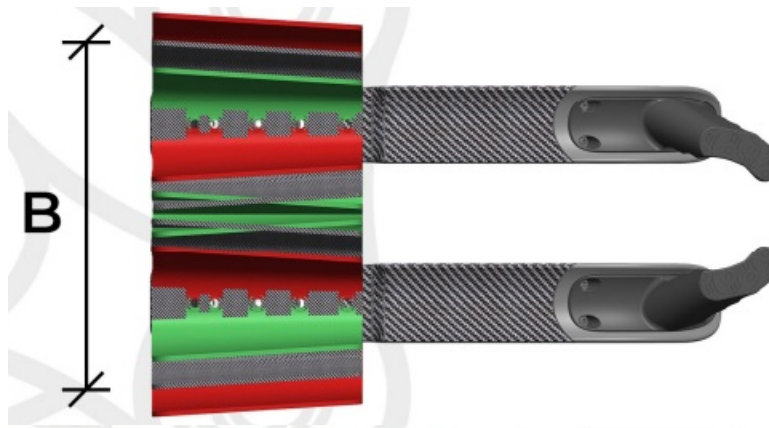


Adjustable/ Fixed Riser (Degrees)	Armrest Width (B)	
	Min	Max
10	170	240
15	170	240
20	170	240
25	170	240
30	170	240

SHORT	Adjustable Riser (Degrees)	Reach Window (A)						Fixed Riser (Degrees)	Reach Window (A)		
		SP		SP (Long)		Ergo			SP	SP/L	Ergo
		Min	Max	Min	Max	Min	Max				
	10	262	297	283	317	269	304	10	297	317	304
15	254	288	273	307	260	294	15	288	307	294	
20	244	278	261	294	249	282	20	278	294	282	
25	232	264	247	279	237	269	25	264	279	269	
30	219	249	231	262	223	253	30	249	262	253	

WIDTH

All width dimensions are measured from outside to outside at the rear of each armrest.



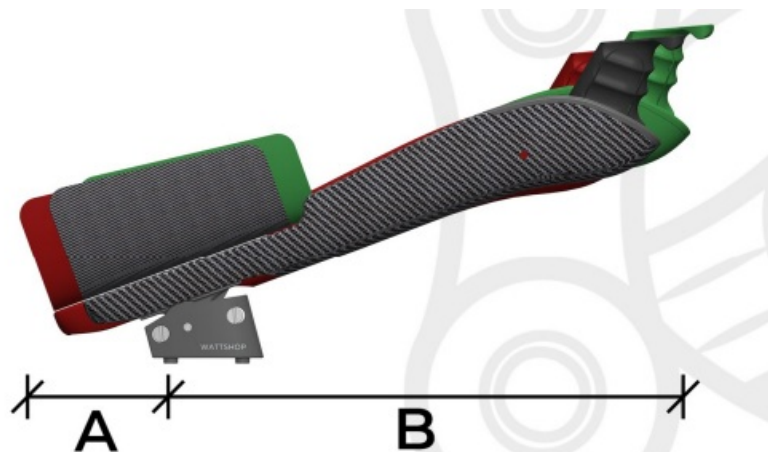
STANDARD	Adjustable Riser (Degrees)	Reach Window (A)						Fixed Riser (Degrees)	Reach Window (A)		
		SP		SP (Long)		Ergo			SP	SP/L	Ergo
		Min	Max	Min	Max	Min	Max				
	10	289	322	309	343	294	327	10	322	343	327
	15	280	313	298	332	283	316	15	313	332	316
	20	271	301	287	318	272	303	20	301	318	303
	25	259	287	273	301	259	287	25	287	301	287
	30	246	271	258	283	244	269	30	271	283	269

LONG	Adjustable Riser (Degrees)	Reach Window (A)						Fixed Riser (Degrees)	Reach Window (A)		
		SP		SP (Long)		Ergo			SP	SP/L	Ergo
		Min	Max	Min	Max	Min	Max				
	10	336	370	356	391	343	377	10	370	391	377
15	326	360	344	378	332	366	15	360	378	366	
20	313	346	330	362	318	351	20	346	362	351	
25	298	330	313	344	303	334	25	330	344	334	
30	281	311	293	324	285	315	30	311	324	315	

MOUNT PLATE BUILD

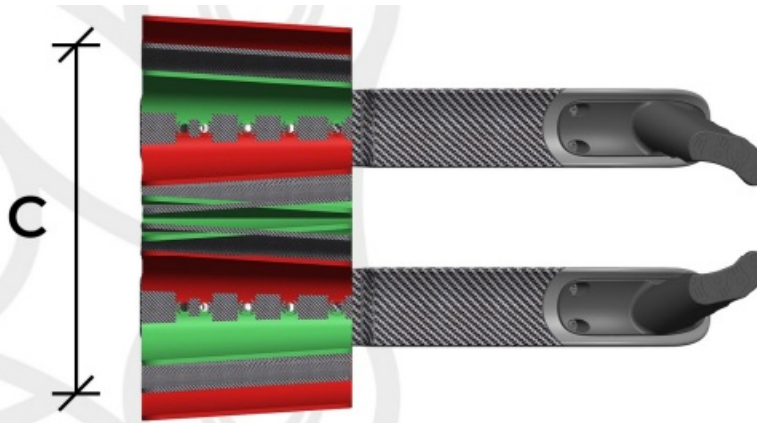
REACH

All reach dimensions are measured from the rear riser bolt hole horizontally to the extension tip.



WIDTH

All width dimensions are measured from outside to outside at the rear of each armrest.



STANDARD	Adjustable Riser		Reach Window (B)		25mm c/c (A)										Total (A + B)										Fixed Riser (Degrees)	Reach (B) (Degrees)	Total (A + B)																	
	Riser (Degrees)	SP (Knots)	Long (Reverse)		Short (Reverse)		Short		Long		Long (Reverse)		Short (Reverse)		Short		Long		Long (Reverse)		Short (Reverse)		Short				Long																	
			Min	Max	Min	Max	Min	Max	Min	Max	Min	Max	Min	Max	Min	Max	Min	Max	Min	Max	Min	Max	Min	Max			Min	Max																
			10	180	122	-55	-20	-35	0	-15	20	5	40	234	302	294	322	224	342	294	342	302	294	342			10	180	122	-55	-20	-35	0	-15	20	5	40	234	302	294	322	224	342	294
	15	180	122	-55	-20	-35	0	-15	20	5	40	234	302	294	322	224	342	294	342	302	294	342	15	180			122	-55	-20	-35	0	-15	20	5	40	234	302	294	322	224	342	294	342	
	20	170	130	-55	-20	-35	0	-15	20	5	40	246	288	288	303	246	321	288	321	288	303	246	20	170			130	-55	-20	-35	0	-15	20	5	40	246	288	288	303	246	321	288	303	
	25	160	140	-55	-20	-35	0	-15	20	5	40	254	280	280	297	254	307	280	297	280	297	254	25	160			140	-55	-20	-35	0	-15	20	5	40	254	280	280	297	254	307	280	297	
	30	146	154	-55	-20	-35	0	-15	20	5	40	264	267	267	271	264	271	267	271	264	271	264	30	146			154	-55	-20	-35	0	-15	20	5	40	264	267	267	271	264	271	264	271	
	35	132	168	-55	-20	-35	0	-15	20	5	40	274	260	260	273	274	260	273	260	273	274	260	35	132			168	-55	-20	-35	0	-15	20	5	40	274	260	260	273	274	260	273	260	273
	40	118	182	-55	-20	-35	0	-15	20	5	40	284	250	250	283	284	250	283	250	283	284	250	40	118			182	-55	-20	-35	0	-15	20	5	40	284	250	250	283	284	250	283	250	283
ADJUSTABLE	Adjustable Riser		Reach Window (B)		25mm c/c (A)										Total (A + B)										Fixed Riser (Degrees)	Reach (B) (Degrees)	Total (A + B)																	
	Riser (Degrees)	SP (Knots)	Long (Reverse)		Short (Reverse)		Short		Long		Long (Reverse)		Short (Reverse)		Short		Long		Long (Reverse)		Short (Reverse)		Short				Long																	
			Min	Max	Min	Max	Min	Max	Min	Max	Min	Max	Min	Max	Min	Max	Min	Max	Min	Max	Min	Max	Min	Max			Min	Max																
			10	180	122	-55	-20	-35	0	-15	20	5	40	234	302	294	322	224	342	294	342	302	294	342			10	180	122	-55	-20	-35	0	-15	20	5	40	234	302	294	322	224	342	294
	15	180	122	-55	-20	-35	0	-15	20	5	40	234	302	294	322	224	342	294	342	302	294	342	15	180			122	-55	-20	-35	0	-15	20	5	40	234	302	294	322	224	342	294	342	
	20	170	130	-55	-20	-35	0	-15	20	5	40	246	288	288	303	246	321	288	321	288	303	246	20	170			130	-55	-20	-35	0	-15	20	5	40	246	288	288	303	246	321	288	303	
	25	160	140	-55	-20	-35	0	-15	20	5	40	254	280	280	297	254	307	280	297	280	297	254	25	160			140	-55	-20	-35	0	-15	20	5	40	254	280	280	297	254	307	280	297	
	30	146	154	-55	-20	-35	0	-15	20	5	40	264	267	267	271	264	271	267	271	264	271	264	30	146			154	-55	-20	-35	0	-15	20	5	40	264	267	267	271	264	271	264	271	
	35	132	168	-55	-20	-35	0	-15	20	5	40	274	260	260	273	274	260	273	260	273	274	260	35	132			168	-55	-20	-35	0	-15	20	5	40	274	260	260	273	274	260	273	260	273
	40	118	182	-55	-20	-35	0	-15	20	5	40	284	250	250	283	284	250	283	250	283	284	250	40	118			182	-55	-20	-35	0	-15	20	5	40	284	250	250	283	284	250	283	250	283
ADJUSTABLE	Adjustable Riser		Reach Window (B)		25mm c/c (A)										Total (A + B)										Fixed Riser (Degrees)	Reach (B) (Degrees)	Total (A + B)																	
	Riser (Degrees)	SP (Knots)	Long (Reverse)		Short (Reverse)		Short		Long		Long (Reverse)		Short (Reverse)		Short		Long		Long (Reverse)		Short (Reverse)		Short				Long																	
			Min	Max	Min	Max	Min	Max	Min	Max	Min	Max	Min	Max	Min	Max	Min	Max	Min	Max	Min	Max	Min	Max			Min	Max																
			10	180	122	-55	-20	-35	0	-15	20	5	40	234	302	294	322	224	342	294	342	302	294	342			10	180	122	-55	-20	-35	0	-15	20	5	40	234	302	294	322	224	342	294
	15	180	122	-55	-20	-35	0	-15	20	5	40	234	302	294	322	224	342	294	342	302	294	342	15	180			122	-55	-20	-35	0	-15	20	5	40	234	302	294	322	224	342	294	342	
	20	170	130	-55	-20	-35	0	-15	20	5	40	246	288	288	303	246	321	288	321	288	303	246	20	170			130	-55	-20	-35	0	-15	20	5	40	246	288	288	303	246	321	288	303	
	25	160	140	-55	-20	-35	0	-15	20	5	40	254	280	280	297	254	307	280	297	280	297	254	25	160			140	-55	-20	-35	0	-15	20	5	40	254	280	280	297	254	307	280	297	
	30	146	154	-55	-20	-35	0	-15	20	5	40	264	267	267	271	264	271	267	271	264	271	264	30	146			154	-55	-20	-35	0	-15	20	5	40	264	267	267	271	264	271	264	271	
	35	132	168	-55	-20	-35	0	-15	20	5	40	274	260	260	273	274	260	273	260	273	274	260	35	132			168	-55	-20	-35	0	-15	20	5	40	274	260	260	273	274	260	273	260	273
	40	118	182	-55	-20	-35	0	-15	20	5	40	284	250	250	283	284	250	283	250	283	284	250	40	118			182	-55	-20	-35	0	-15	20	5	40	284	250	250	283	284	250	283	250	283

Adjustable/Fixed Riser (Degrees)	Armrest Width (C) (Internal c/c +/-)			
	Inboard	Max	Min	Outboard
10	+30	+100	+100	+170
15	+30	+100	+100	+170
20	+30	+100	+100	+170
25	+30	+100	+100	+170
30	+30	+100	+100	+170

EXAMPLE	Armrest Width (C)			
	Inboard	Max	Min	Outboard
105	155	205	205	275
110	140	200	200	260
115	145	215	215	265
120	150	220	220	270
125	155	225	225	275
130	160	230	230	280
135	165	235	235	285
140	170	240	240	290

MOUNT PLATE BUILD CONTINUED ...

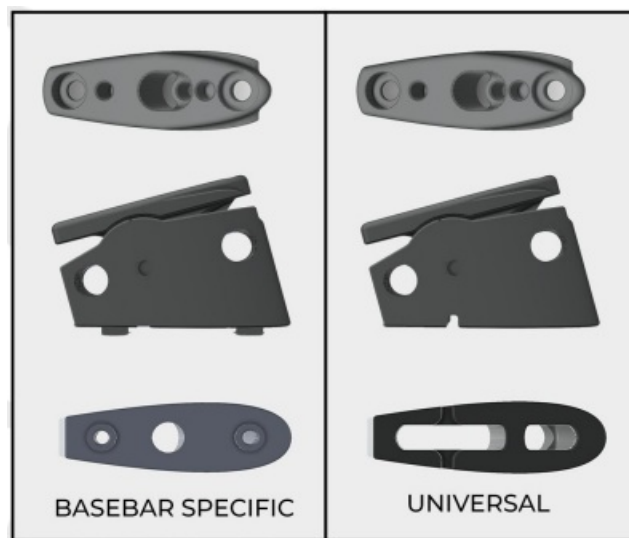
LONG	Adjustable Riser (Degrees)	Reach Window (B)		25mm c/c (A)										Total (A + B)										Fixed Riser (Degrees)	Reach (B) (Degrees)	Total (A + B)																		
		Long (Reverse)		Short (Reverse)		Short		Long		Long (Reverse)		Short (Reverse)		Short		Long		Long (Reverse)		Short (Reverse)		Short				Long (Reverse)		Short (Reverse)		Short														
		Min	Max	Min	Max	Min	Max	Min	Max	Min	Max	Min	Max	Min	Max	Min	Max	Min	Max	Min	Max	Min	Max			Min	Max	Min	Max	Min	Max	Min	Max											
		10	180	122	-55	-20	-35	0	-15	20	5	40	234	302	294	322	224	342	294	342	302	294	342			15	180	122	-55	-20	-35	0	-15	20	5	40	234	302	294	322	224	342	294	342
		20	170	130	-55	-20	-35	0	-15	20	5	40	246	288	288	303	246	321	288	321	288	303	246					20	170	130	-55	-20	-35	0	-15	20	5	40	246	288	288	303	246	321
25	160	140	-55	-20	-35	0	-15	20	5	40	254	280	280	297	254	307	280	297	280	297	254	25	160	140	-55			-20	-35	0	-15	20	5	40	254	280	280	297	254	307	280	297		
30	146	154	-55	-20	-35	0	-15	20	5	40	264	267	267	271	264	271	267	271	264	271	264	30	146	154	-55			-20	-35	0	-15	20	5	40	264	267	267	271	264	271	264	271		
LONG	Adjustable Riser (Degrees)	Reach Window (B)		25mm c/c (A)										Total (A + B)										Fixed Riser (Degrees)	Reach (B) (Degrees)	Total (A + B)																		
		Long (Reverse)		Short (Reverse)		Short		Long		Long (Reverse)		Short (Reverse)		Short		Long		Long (Reverse)		Short (Reverse)		Short				Long (Reverse)		Short (Reverse)		Short														
		Min	Max	Min	Max	Min	Max	Min	Max	Min	Max	Min	Max	Min	Max	Min	Max	Min	Max	Min	Max	Min	Max			Min	Max	Min	Max	Min	Max	Min	Max	Min	Max	Min	Max	Min	Max					
		10	180	122	-55	-20	-35	0	-15	20	5	40	234	302	294	322	224	342	294	342	302	294	342			15	180	122	-55	-20	-35	0	-15	20	5	40	234	302	294	322	224	342	294	342
		20	170	130	-55	-20	-35	0	-15	20	5	40	246	288	288	303	246	321	288	321	288	303	246					20	170	130	-55	-20	-35	0	-15	20	5	40	246	288	288	303	246	321
25	160	140	-55	-20	-35	0	-15	20	5	40	254	280	280	297	254	307	280	297	280	297	254	25	160	140	-55			-20	-35	0	-15	20	5	40	254	280	280	297	254	307	280	297		
30	146	154	-55	-20	-35	0	-15	20	5	40	264	267	267	271	264	271	267	271	264	271	264	30	146	154	-55			-20	-35	0	-15	20	5	40	264	267	267	271	264	271	264	271		
LONG	Adjustable Riser (Degrees)	Reach Window (B)		25mm c/c (A)										Total (A + B)										Fixed Riser (Degrees)	Reach (B) (Degrees)	Total (A + B)																		
		Long (Reverse)		Short (Reverse)		Short		Long		Long (Reverse)		Short (Reverse)		Short		Long		Long (Reverse)		Short (Reverse)		Short				Long (Reverse)		Short (Reverse)		Short														
		Min	Max	Min	Max	Min	Max	Min	Max	Min	Max	Min	Max	Min	Max	Min	Max	Min	Max	Min	Max	Min	Max			Min	Max	Min	Max	Min	Max	Min	Max	Min	Max	Min	Max	Min	Max					
		10	180	122	-55	-20	-35	0	-15	20	5	40	234	302	294	322	224	342	294	342	302	294	342			15	180	122	-55	-20	-35	0	-15	20	5	40	234	302	294	322	224	342	294	342
		20	170	130	-55	-20	-35	0	-15	20	5	40	246	288	288	303	246	321	288	321	288	303	246					20	170	130	-55	-20	-35	0	-15	20	5	40	246	288	288	303	246	321
25	160	140	-55	-20	-35	0	-15	20	5	40	254	280	280	297	254	307	280	297	280	297	254	25	160	140	-55			-20	-35	0	-15	20	5	40	254	280	280	297	254	307	280	297		
30	146	154	-55	-20	-35	0	-15	20	5	40	264	267	267	271	264	271	267	271	264	271	264	30	146	154	-55			-20	-35	0	-15	20	5	40	264	267	267	271	264	271	264	271		

Adjustable/Fixed Riser (Degrees)	Armrest Width (C) (Internal c/c +/-)			
	Inboard	Max	Min	Outboard
105	+30	+100	+100	+170
110	+30	+100	+100	+170
115	+30	+100	+100	+170
120	+30	+100	+100	+170
125	+30	+100	+100	+170
130	+30	+100	+100	+170

EXAMPLE	Armrest Width (C)			
	Inboard	Max	Min	Outboard
105	155	205	205	275
110	140	200	200	260
115	145	215	215	265
120	150	220	220	270
125	155	225	225	275
130	160	230	230	280
135	165	235	235	285
140	170	240	240	290

SHORT	Adjustable Riser (Degrees)	Reach Window (B)		25mm c/c (A)										Total (A + B)										Fixed Riser (Degrees)	Reach (B) (Degrees)	Total (A + B)									
		Ego	Long (Reverse)	Short (Reverse)		Short		Long		Long (Reverse)		Short (Reverse)		Short		Long		Long (Reverse)		Short (Reverse)		Short				Long									
				Min	Max	Min	Max	Min	Max	Min	Max	Min	Max	Min	Max	Min	Max	Min	Max	Min	Max	Min	Max			Min	Max								
				10	180	297	-55	-20	-35	0	-15	20	5	40	237	297	297	247	37	267	337	10	197			242	277	262	297	282	37	302	337	297	337
				15	170	288	-55	-20	-35	0	-15	20	5	40	199	268	268	228	239	308	270	238	15			208	233	268	260	263	268	293	308	293	308
20	160	279	-55	-20	-35	0	-15	20	5	40	179	249	249	208	220	288	249	217	20	217	218	249	241	244	249	264	279	264	279						
25	150	270	-55	-20	-35	0	-15	20	5	40	159	229	229	188	200	267	229	196	25	266	209	244	229	264	260	264	269	280	269	280					
30	140	260	-55	-20	-35	0	-15	20	5	40	139	209	209	168	180	246	209	174	30	246	189	229	214	249	241	249	264	269	284	269					
ADJUSTABLE	Adjustable Riser (Degrees)	Reach Window (B)		25mm c/c (A)										Total (A + B)										Fixed Riser (Degrees)	Reach (B) (Degrees)	Total (A + B)									
		Ego	Long (Reverse)	Short (Reverse)		Short		Long		Long (Reverse)		Short (Reverse)		Short		Long		Long (Reverse)		Short (Reverse)		Short				Long									
				Min	Max	Min	Max	Min	Max	Min	Max	Min	Max	Min	Max	Min	Max	Min	Max	Min	Max	Min	Max			Min	Max								
				10	262	317	-55	-20	-35	0	-15	20	5	40	228	297	248	317	266	317	288	262	10			317	262	297	262	317	312	317	312	317	
				15	252	308	-55	-20	-35	0	-15	20	5	40	208	277	228	277	266	277	248	228	15			267	252	287	252	287	287	292	287	292	
20	242	298	-55	-20	-35	0	-15	20	5	40	206	274	226	264	266	274	246	234	20	234	259	274	259	274	279	284	279	284							
25	247	279	-55	-20	-35	0	-15	20	5	40	192	259	212	259	232	259	232	219	25	279	234	259	244	264	264	269	284	269	284						
30	237	269	-55	-20	-35	0	-15	20	5	40	176	242	196	262	216	262	238	202	30	262	237	242	227	262	247	264	269	287	269						
ADJUSTABLE	Adjustable Riser (Degrees)	Reach Window (B)		25mm c/c (A)										Total (A + B)										Fixed Riser (Degrees)	Reach (B) (Degrees)	Total (A + B)									
		Ego	Long (Reverse)	Short (Reverse)		Short		Long		Long (Reverse)		Short (Reverse)		Short		Long		Long (Reverse)		Short (Reverse)		Short				Long									
				Min	Max	Min	Max	Min	Max	Min	Max	Min	Max	Min	Max	Min	Max	Min	Max	Min	Max	Min	Max			Min	Max								
				10	260	314	-55	-20	-35	0	-15	20	5	40	206	274	226	264	265	274	246	234	10			304	249	274	259	264	269	284	269	284	
				15	249	267	-55	-20	-35	0	-15	20	5	40	184	263	214	262	254	262	230	222	15			262	227	263	247	262	269	287	269	287	
20	237	269	-55	-20	-35	0	-15	20	5	40	162	249	202	269	222	269	242	209	20	269	234	249	234	269	264	269	279	269							

You will receive this option if you have selected the Anemoi Basebar, Conversion Kit or Mount Plate build. These risers have threaded bosses on the underside which provides easier installation and seamless integration with WattShop componentry.



FIXED ANGLED RISER

Designed to provide you with a clean and seamless integration between riser and extension, the fixed angled riser is available in five different angles, each of which come with 2 degrees of toe-in. This may be the preferred option for riders who know their optimal extension angle or want to maximise their position within the UCI regulations.

- 10 DEGREES
- 15 DEGREES
- 20 DEGREES
- 25 DEGREES
- 30 DEGREES



These risers are only compatible with the Anemoi Basebar, Conversion Kit or Mount Plate builds.

ARMREST+ COMPUTER MOUNT SELECTION

- **ARMRESTS**

Available in two different styles. Both are slotted to provide width adjustment.

- **DUAL SIDED**

Each armrest has a high sided inside and outside supporting faces, giving the armrest a “U” shape We recommend this style armrests for widths 220mm or wider this ensures you will benefit from the support of the inside edge.

- **SINGLE SIDED**

Each armrest has a high sided outside supporting face. We recommend this for armrest widths less than 220mm. At less than 220mm your forearms are likely touching so the benefit of the inside supporting face is reduced.

- **COMPUTER MOUNT**

Available in two different options; Garmin and Wahoo and in two different extension interface options.

- **SINGLE MOUNT**

This option will come supplied as standard with the Standard and Mount Plate built options. It attaches to the left hand extension only, hence single mount. 5mm spacers can be used to move the computer mount further away from the extension if needed. You also have the ability to adjust toe.



- **CROSSBRACE MOUNT**

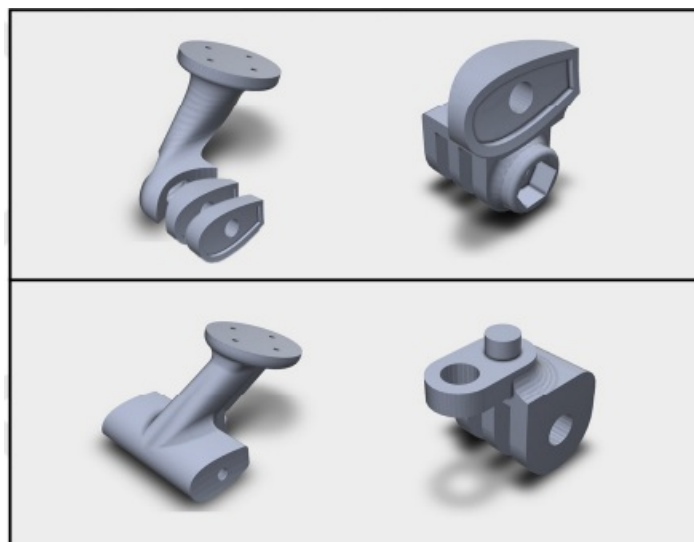
Available in two different options; Garmin and Wahoo and in two different extension interface options.

- **SINGLE MOUNT**

This option will come supplied as standard with the Standard and Mount Plate built options. It attaches to the left hand extension only, hence single mount. 5mm spacers can be used to move the computer mount further away from the extension if needed. You also have the ability to adjust toe.

- **CROSSBRACE MOUNT**

Comes supplied as standard with all Anemoi Basebar or Conversion Kit builds. This computer mount attaches to both extensions to centralise and provide additional strength. GoPro style accessories are available for both to allow GoPro and front light attachments.



CONVERSION SPACER SELECTION

- **CONVERSION SPACER**

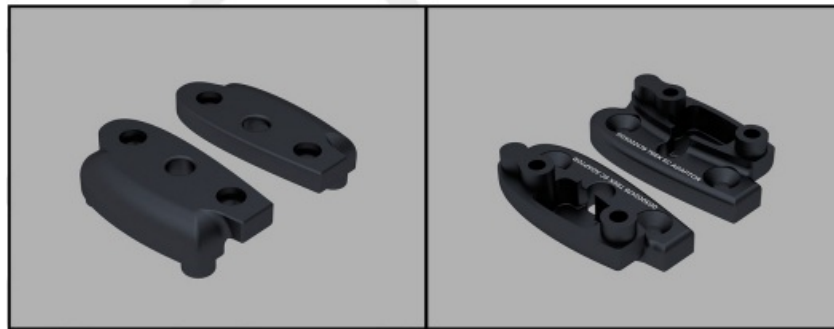
Designed to accommodate various basebars and riser stacks, our spacers are precision-matched to stock riser profiles for a visually cohesive integration of our Anemoi component range.

- **INTEGRATION**

Profile-matched to your existing riser stacks, ensuring seamless integration between your basebar and the Anemoi product range.

- **OPTIMAL LATERAL STACK CENTRES**

Bring uniformity to your riser stack lateral centres. Converting your existing riser stack lateral centres to 705mm. This alignment ensures your extension poles are centred to your forearm. Our range of Conversion Spacers is continually expanding however if you don't see your model of basebar in the list please get in contact.



TREK SPEED CONCEPT - TOP AND UNDERSIDE VIEW

@watt_Shop

www.shopforwatts.co.uk

info@shopforwatts.co.uk

Documents / Resources



[WATTSHOP Anemoi MK2 Extension Dual Stack](#) [pdf] Instruction Manual
Anemoi MK2 Extension Dual Stack, MK2 Extension Dual Stack, Extension Dual Stack, Dual Stack

References

- [User Manual](#)

[Manuals+](#), [Privacy Policy](#)

This website is an independent publication and is neither affiliated with nor endorsed by any of the trademark owners. The "Bluetooth®" word mark and logos are registered trademarks owned by Bluetooth SIG, Inc. The "Wi-Fi®" word mark and logos are registered trademarks owned by the Wi-Fi Alliance. Any use of these marks on this website does not imply any affiliation with or endorsement.