



WATTS RD-100-V Install For Cast Into Slab and Above Slab Installation Guide

[Home](#) » [WATTS](#) » WATTS RD-100-V Install For Cast Into Slab and Above Slab Installation Guide 

Contents

- [1 WATTS RD-100-V Install For Cast Into Slab and Above Slab](#)
- [2 Dimensions](#)
- [3 Install – Cast In Slab](#)
- [4 Install – Body Above Slab](#)
- [5 Limited Warranty](#)
- [6 Documents / Resources](#)
 - [6.1 References](#)
- [7 Related Posts](#)



WATTS RD-100-V Install For Cast Into Slab and Above Slab



Specifications

- Model: RD-100-V
- Dimensions: 6 5/8 x 6 1/4 x 14 1/8 Dia.
- Pipe Size: 12 3/8

Installation Instructions – Cast Into Slab

1. Place the V extension on top of the body with the supplied gasket in between. Ensure the gasket is visible on both sides of the extension
2. Position the clamp collar on top of the extension with roofing membrane in between.
3. Thread the supplied hardware into the body, passing through ears on both the clamp collar and extension. Tighten bolts to compress gaskets and roof membrane.
4. Place the dome on the flange.

Installation Instructions – Body Above Slab

1. Position the clamp collar on top of the drain body with roofing membrane in between.
2. Thread the supplied hardware into the body and affix into ears on the clamp collar. Tighten bolts to compress membrane.
3. Place the dome on the flange.

FAQ

- **Q: What should I do if the local building or plumbing codes differ from the manual?**

A: In case of any discrepancies between this manual and local codes, always follow the local regulations after

consulting with governing authorities.

- **Q: How should I ensure proper insulation at the drain?**

A: Follow the specified minimum insulation requirements mentioned in the manual, and make sure to adhere to the recommended slope for effective drainage.

- **Q: Can I use multiple extensions with this product?**

A: Yes, you can use multiple extensions by placing gaskets in between each extension, ensuring proper alignment and visibility of the gaskets on both sides.

Installation Instructions

RD-100-V

Install For Cast Into Slab & Above Slab

Warning

Read this Manual BEFORE using this equipment. Failure to read and follow all safety and use information can result in death, serious personal injury, property damage, or damage to the equipment. Keep this Manual for future reference.

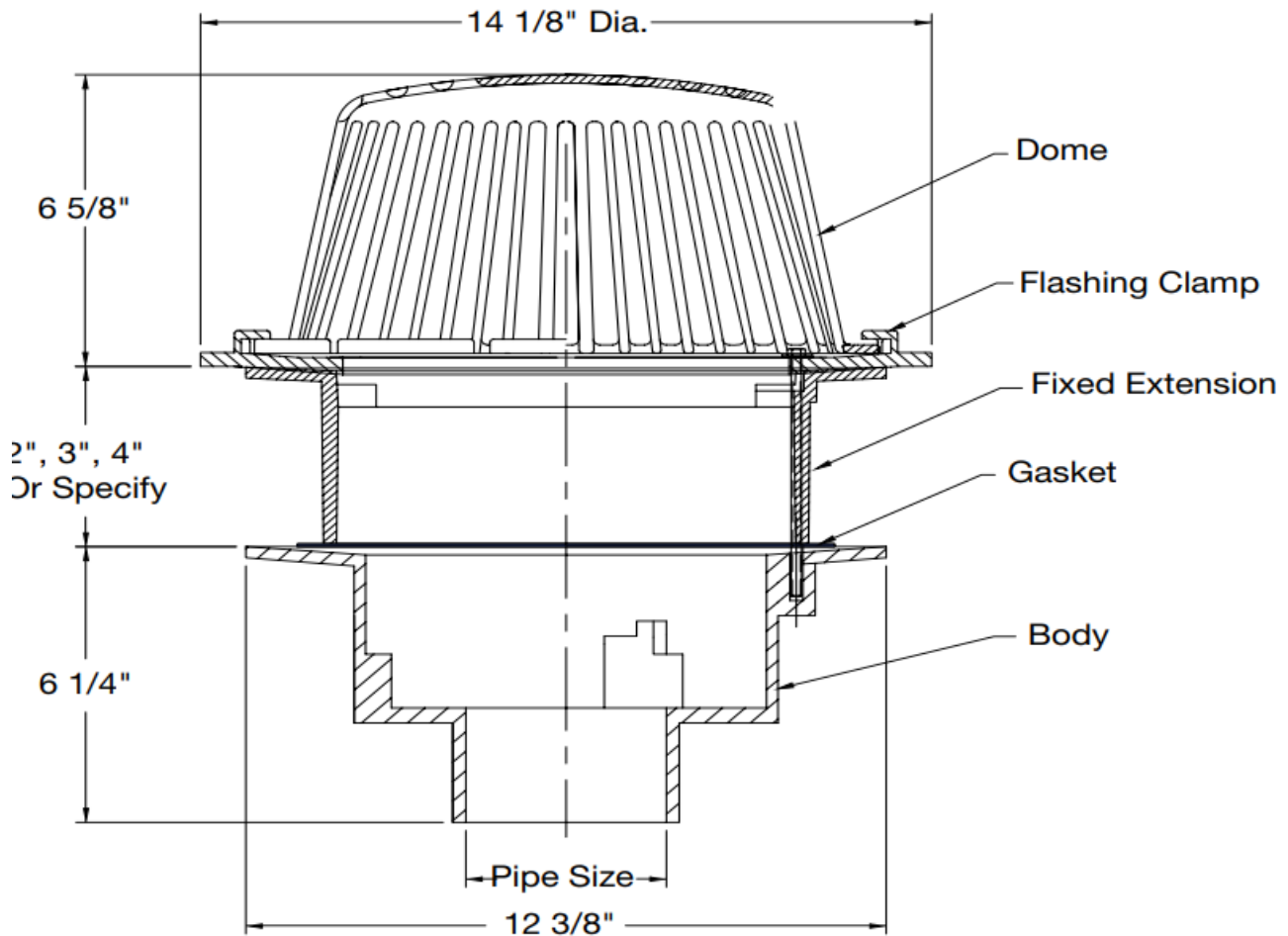
Warning

You are required to consult the local building and plumbing codes prior to installation. If the information in this manual is not consistent with local building or plumbing codes, the local codes should be followed. Inquire with governing authorities for additional local requirements.

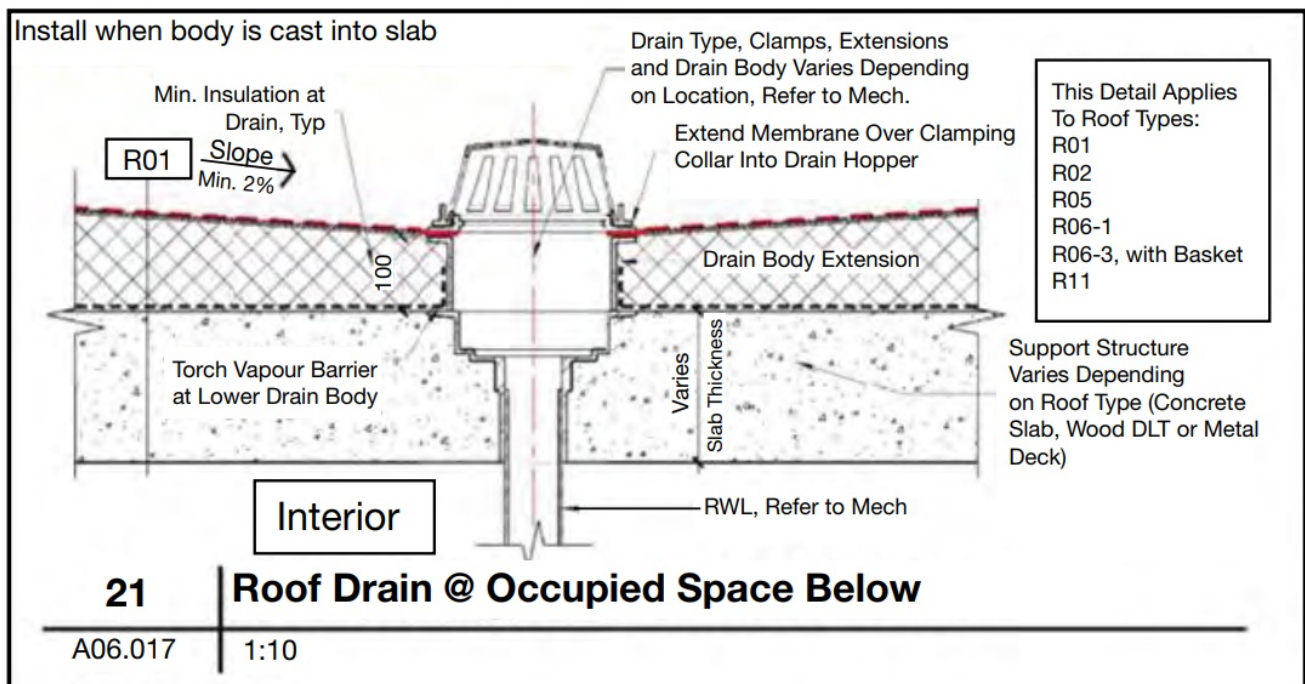
NOTICE

Follow the guidelines listed here for proper installation, operation, and maintenance.

Dimensions



Install – Cast In Slab



1. V extension to be placed on top of body with supplied gasket in between body and bottom of extension. Extension to be placed in center of gasket, confirmed by ensuring gasket is visible on both sides of the extension. If multiple extensions are required, gaskets to be placed in between each extension with the

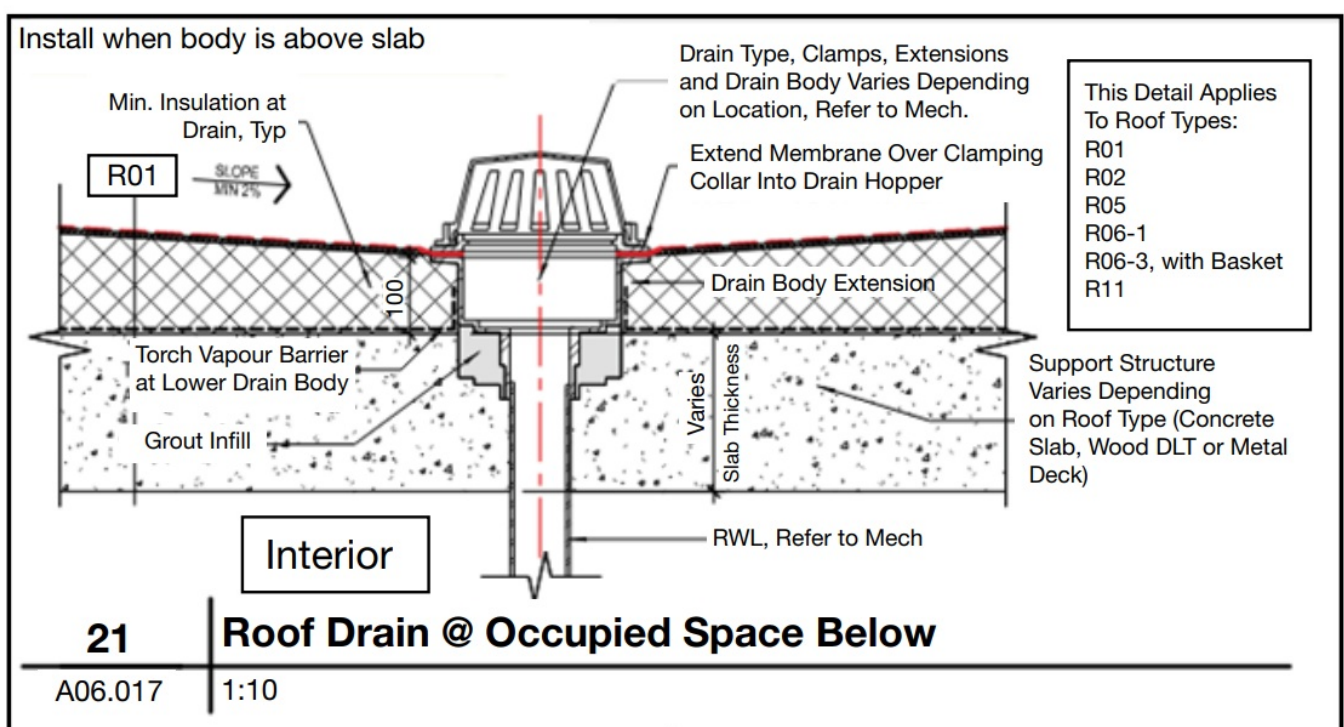
guidelines above adhered to.

2. Clamp collar to be placed on top of extension with roofing membrane applied between extension and clamp collar.
3. Supplied hardware to be threaded into body, passing through ears on both clamp collar and extension. Tighten bolts to compress gaskets and roof membrane in assembly.
- 4.



Place dome on flange.

Install – Body Above Slab



1. Clamp collar to be placed on top of drain body with roofing membrane applied between extension and clamp collar.
2. Supplied hardware to be threaded into body, affixed into ears on clamp collar. Tighten bolts to compress membrane between clamp collar and body.
3. Place dome on flange.

Limited Warranty

Watts Regulator Co. (the "Company") warrants each product to be free from defects in material and workmanship under normal usage for a period of one year from the date of original shipment. In the event of such defects within the warranty period, the Company will, at its option, replace or recondition the product without charge. THE WARRANTY SET FORTH HEREIN IS GIVEN EXPRESSLY AND IS THE ONLY WARRANTY GIVEN BY THE COMPANY WITH RESPECT TO THE PRODUCT. THE COMPANY MAKES NO OTHER WARRANTIES, EXPRESS OR IMPLIED. THE COMPANY HEREBY SPECIFICALLY DISCLAIMS ALL OTHER WARRANTIES, EXPRESS OR IMPLIED, INCLUDING BUT NOT LIMITED TO THE IMPLIED WARRANTIES OF MERCHANTABILITY AND FITNESS FOR A PARTICULAR PURPOSE.

The remedy described in the first paragraph of this warranty shall constitute the sole and exclusive remedy for breach of warranty, and the Company shall not be responsible for any incidental, special or consequential damages, including without limitation, lost profits or the cost of repairing or replacing other property which is damaged if this product does not work properly, other costs resulting from labor charges, delays, vandalism, negligence, fouling caused by foreign material, damage from adverse water conditions, chemical, or any other circumstances over which the Company has no control. This warranty shall be invalidated by any abuse, misuse, misapplication, improper installation or improper maintenance or alteration of the product.

Some States do not allow limitations on how long an implied warranty lasts, and some States do not allow the exclusion or limitation of incidental or consequential damages. Therefore the above limitations may not apply to you. This Limited Warranty gives you specific legal rights, and you may have other rights that vary from State to State. You should consult applicable state laws to determine your rights. SO FAR AS IS CONSISTENT WITH APPLICABLE STATE LAW, ANY IMPLIED WARRANTIES THAT MAY NOT BE DISCLAIMED, INCLUDING THE IMPLIED WARRANTIES OF MERCHANTABILITY AND FITNESS FOR A PARTICULAR PURPOSE, ARE LIMITED IN DURATION TO ONE YEAR FROM THE DATE OF ORIGINAL SHIPMENT.


USA: T: [800-338-2581](tel:800-338-2581) • Watts.com

Canada: T: [888-208-8927](tel:888-208-8927) • Watts.ca

Latin America: T: (52) 55-4122-0138 • Watts.com

© 2024 Watts

Documents / Resources

 The image shows the cover of the installation instructions for the RD-100-V. It features a technical drawing of the product, a list of installation steps, and the Watts logo at the bottom.	<p>WATTS RD-100-V Install For Cast Into Slab and Above Slab [pdf] Installation Guide RD-100-V Install For Cast Into Slab and Above Slab, RD-100-V, Install For Cast Into Slab and Above Slab, Cast Into Slab and Above Slab, and Above Slab, Above Slab, Slab</p>
--	---

References

- [Watts | Plumbing, Heating and Water Quality Solutions](#)

- [User Manual](#)

[Manuals+](#), [Privacy Policy](#)

This website is an independent publication and is neither affiliated with nor endorsed by any of the trademark owners. The "Bluetooth®" word mark and logos are registered trademarks owned by Bluetooth SIG, Inc. The "Wi-Fi®" word mark and logos are registered trademarks owned by the Wi-Fi Alliance. Any use of these marks on this website does not imply any affiliation with or endorsement.