

WATTS BT-CT03 RF Vision Wireless Central Control Device With Touch Screen



WATTS BT-CT03 RF Vision Wireless Central Control Device With Touch Screen Installation Guide

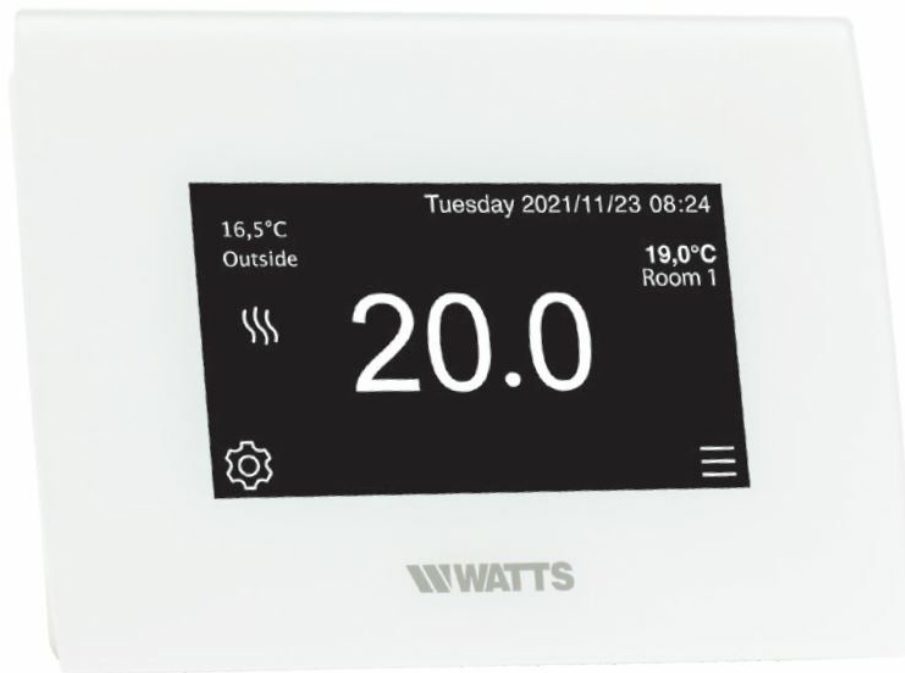
[Home](#) » [WATTS](#) » WATTS BT-CT03 RF Vision Wireless Central Control Device With Touch Screen Installation Guide 

Contents

- [1 WATTS BT-CT03 RF Vision Wireless Central Control Device With Touch Screen](#)
- [2 Product Information](#)
- [3 Product Usage Instructions](#)
- [4 Box Contents](#)
- [5 More Information](#)
- [6 Safety warnings and operating instructions](#)
- [7 Dimensions](#)
- [8 Installation Instructions](#)
- [9 PAIRING](#)
- [10 Contact Information](#)
- [11 Documents / Resources](#)
 - [11.1 References](#)



WATTS BT-CT03 RF Vision Wireless Central Control Device With Touch Screen



Product Information

Specifications

- **Model:** BT-CT03 RF
- **Control:** Central control device with touchscreen
- **Connectivity:** Bluetooth (BT)
- **Power Input:** 230V wall outlet
- **USB Ports:** Wall and table options are available

Product Usage Instructions

- **Installation**

- Place the central control device in a suitable location within your home.
- Connect the device to a 230V wall outlet for power.
- Follow on-screen prompts for initial setup and configuration.

- **WIFI Settings**

Configure the device to connect to your home WIFI network for remote access and control.

- **House Creation**

Create different zones or rooms within your home for easier control and management of connected devices.

- **Radio Pairing**

Prioritize radio pairing between the central device and individual devices like heating systems or lighting for seamless control.

- **Delete a Device**

If needed, remove a device from the system by following the on-screen instructions for deletion.

Frequently Asked Questions (FAQ)

• **Q: How do I reset the central control device?**

A: To reset the device, locate the reset button on the device and press it for 10 seconds until the device restarts.

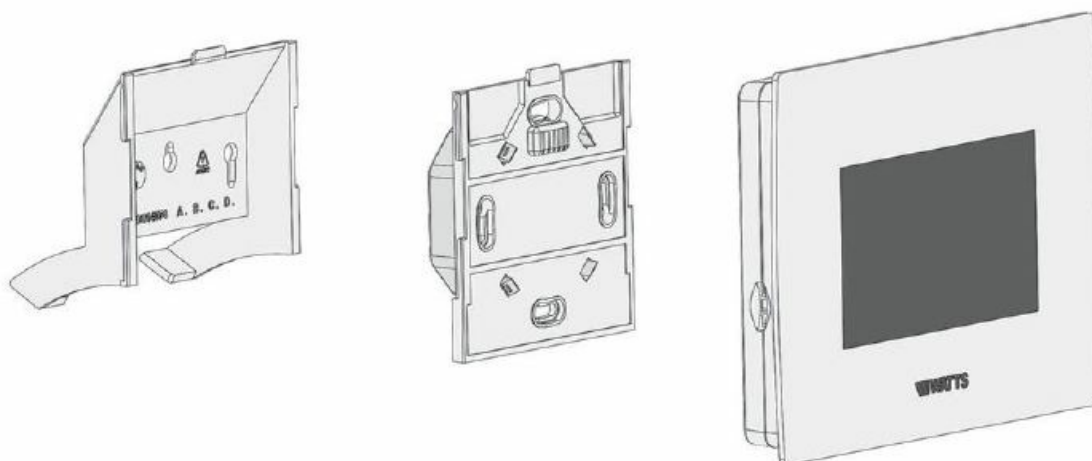
• **Q: Can I control multiple rooms separately with this device?**

A: Yes, you can create different rooms within the system and control them individually for customized management.

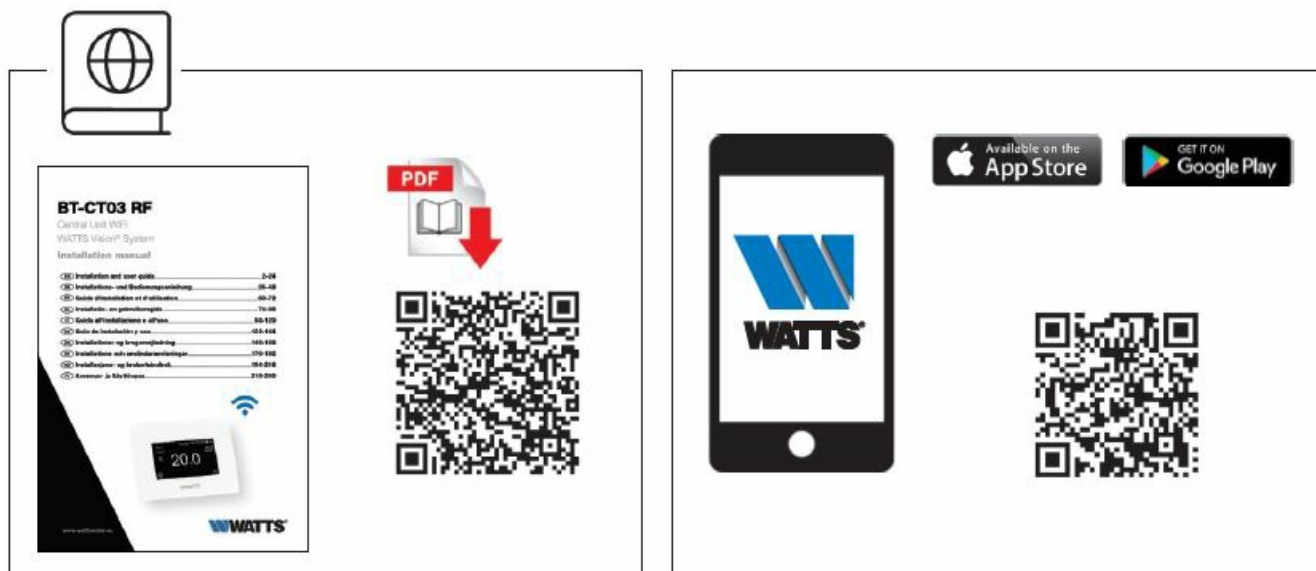
• **Q: Is it possible to expand the number of devices connected to the central control?**

A: The central control device supports up to 50 connected devices, allowing for scalability and flexibility in your smart home setup.

Box Contents



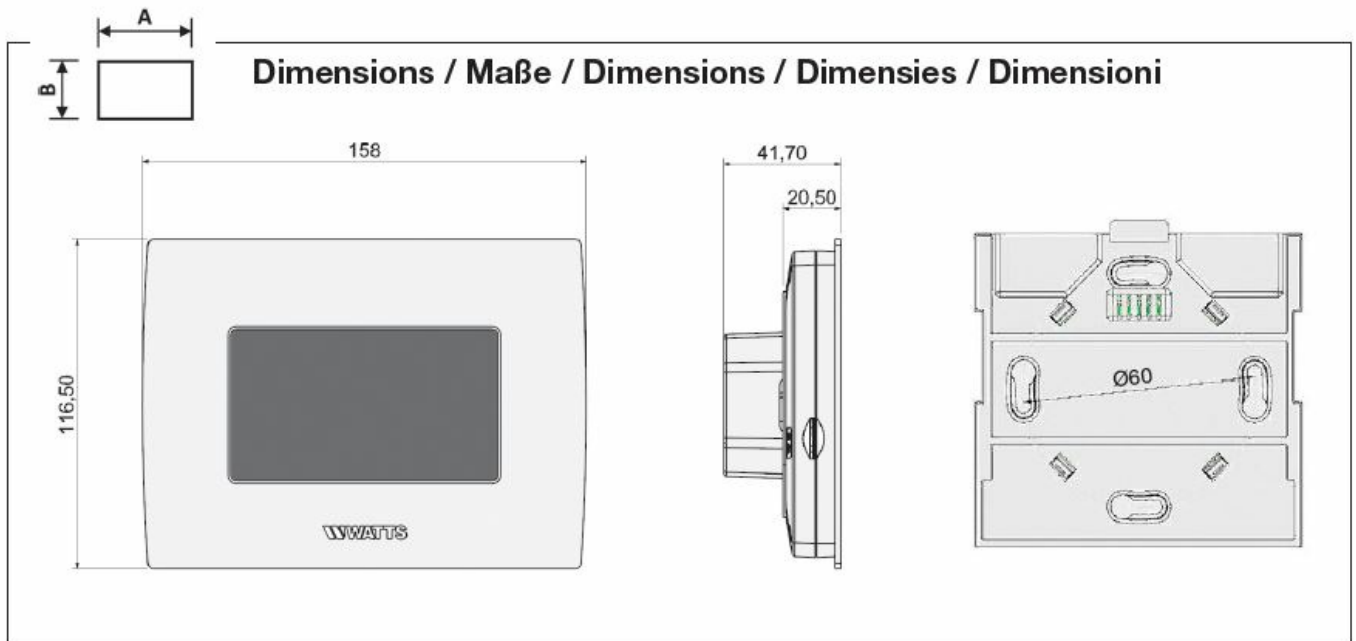
More Information



Safety warnings and operating instructions

This product should be installed preferably by a qualified professional. All instructions in this Installation & Operation manual should be observed when working with the controller. Failures due to improper installation, improper use or poor maintenance are voiding manufacturer liability. Batteries may explode or leak, and cause burn injury, if recharger, disposed of fire, mixed with a different battery type, inserted backwards or disassembled. Replace all used batteries at the same time. Do not carry batteries loose in your pocket or purse. Do not remove the battery label. Keep batteries away from children. If swallowed, consult a physician at once.

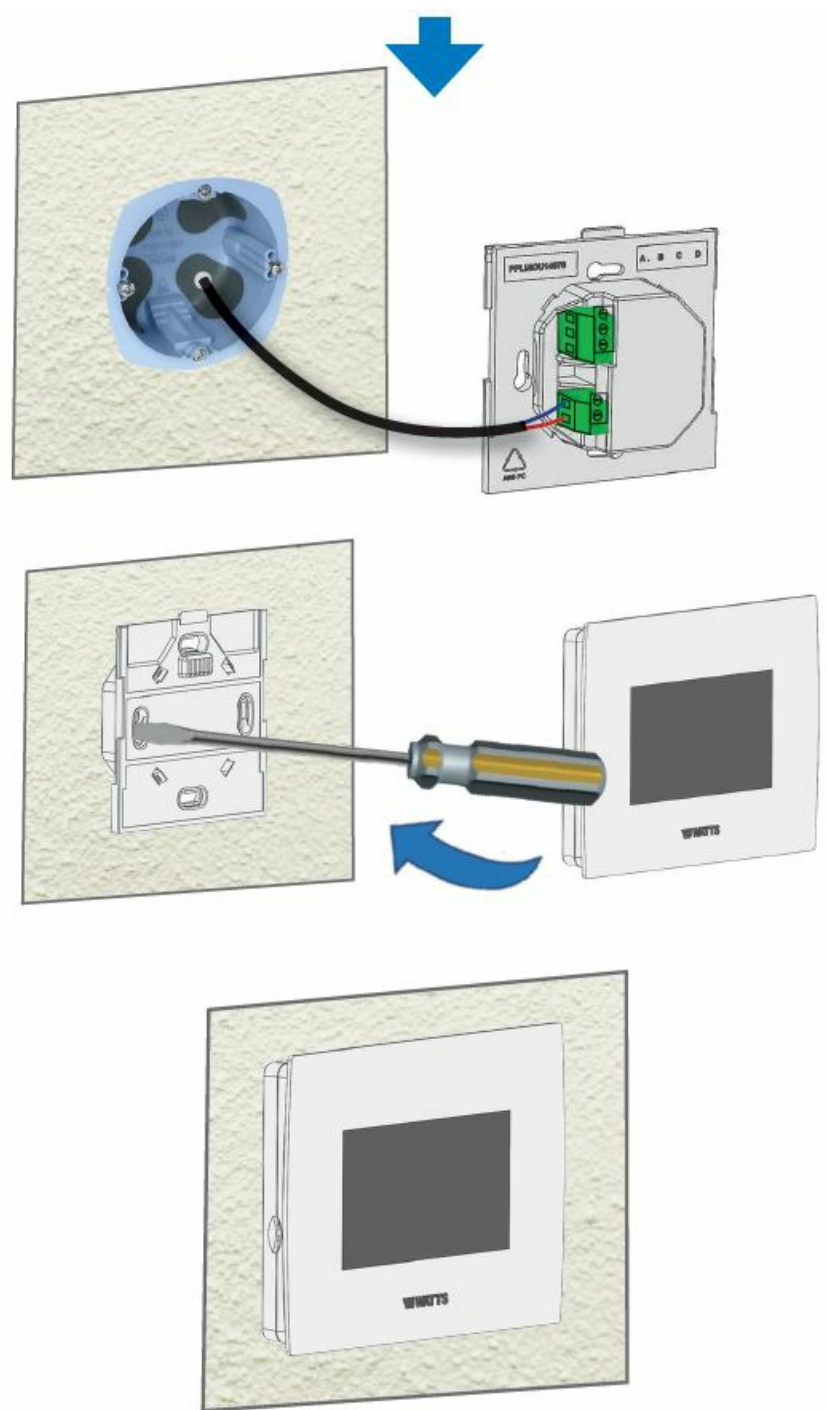
Dimensions



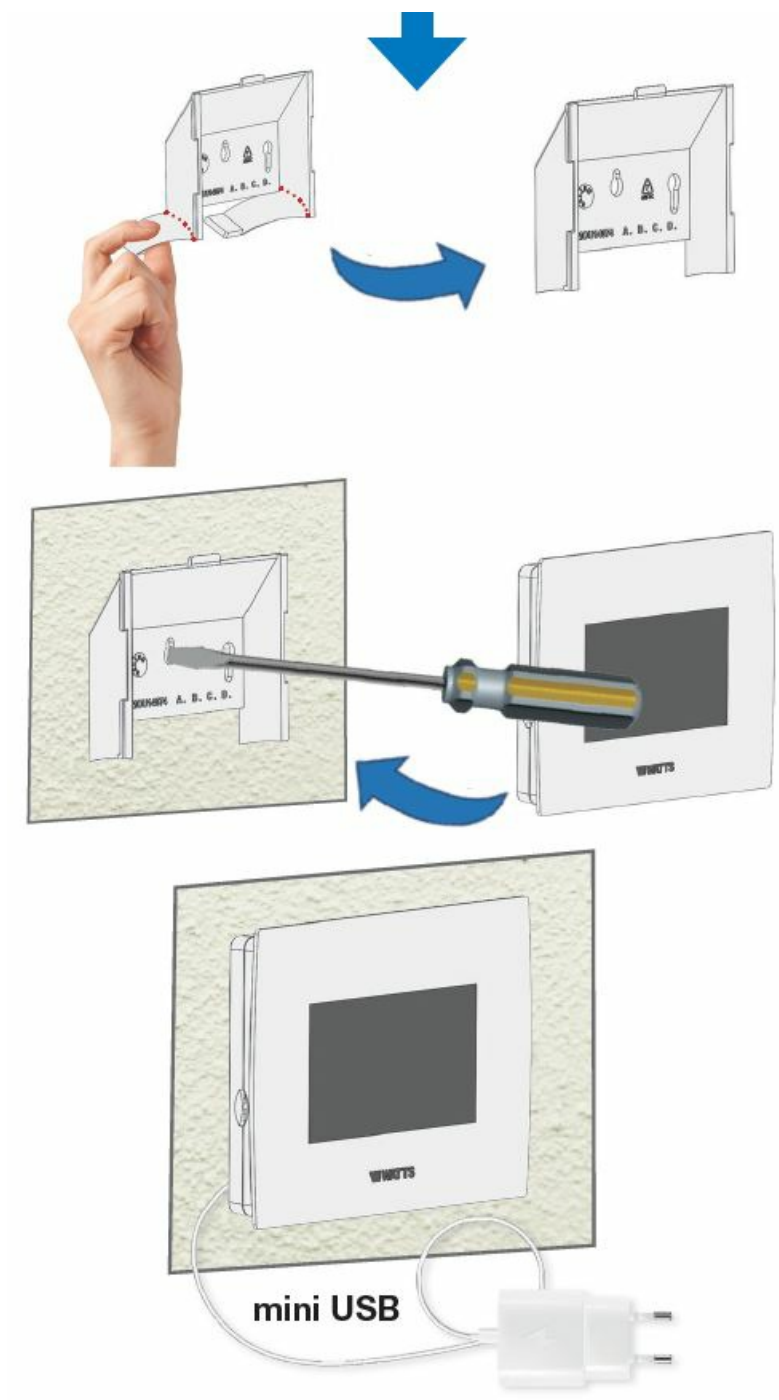
- The descriptions and photographs contained in this document are supplied by way of example and illustration only. Watts Industries reserves the right to carry out any technical and design improvements to its products without prior notice. Watts hereby objects to any term, different from or additional to Watts terms, contained in any buyer communication in any form, unless agreed to in writing and signed by an officer of Watts.
- **2012/19/EU:** Products marked with this symbol cannot be disposed of as unsorted municipal waste in the European Union. For proper recycling, return this product to your local supplier upon the purchase of equivalent new equipment, or dispose of it at designated collection points. For more information see: www.recyclethis.info
- **2006/66/EC:** This product contains a battery that cannot be disposed of as unsorted municipal waste in the European Union. See the product documentation for specific battery information. The battery is marked with this symbol, which may include lettering to indicate cadmium (Cd), lead (Pb), or mercury (Hg).
- For proper recycling, return the battery to your supplier or to a designated collection point. For more information see: www.recyclethis.info.

Installation Instructions

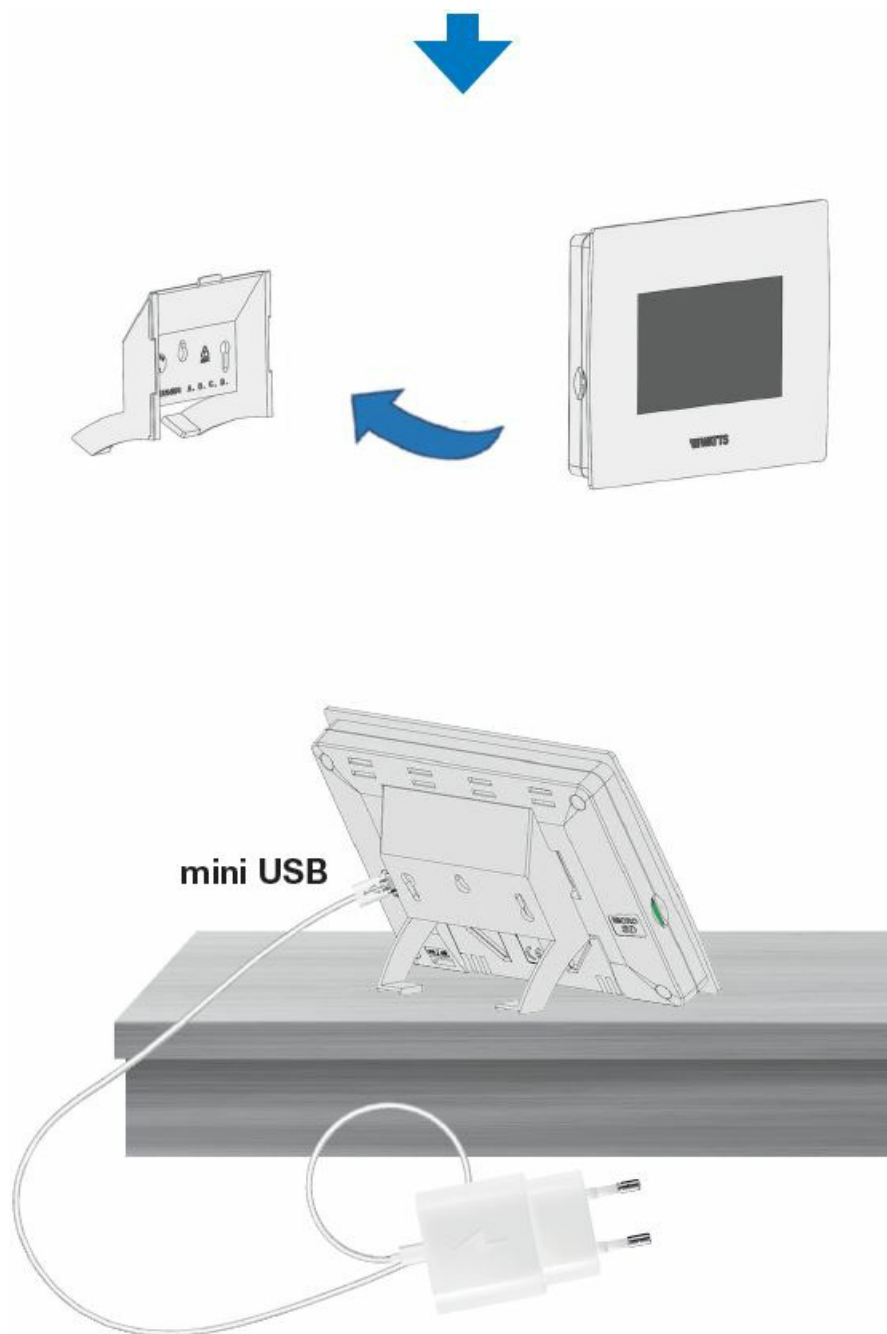
230V WALL



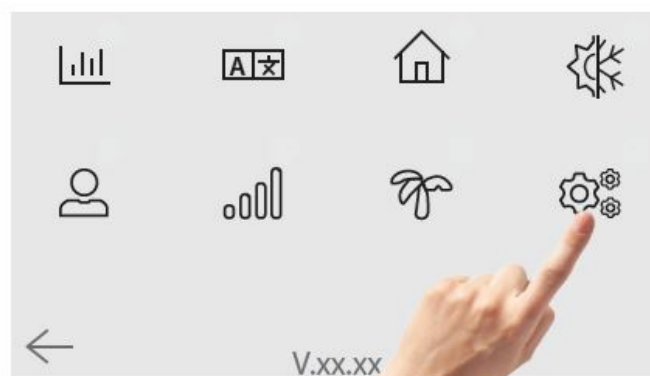
USB WALL



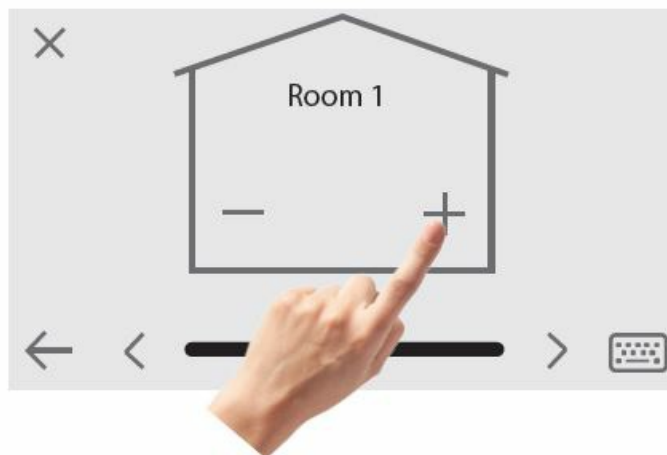
USB TABLE



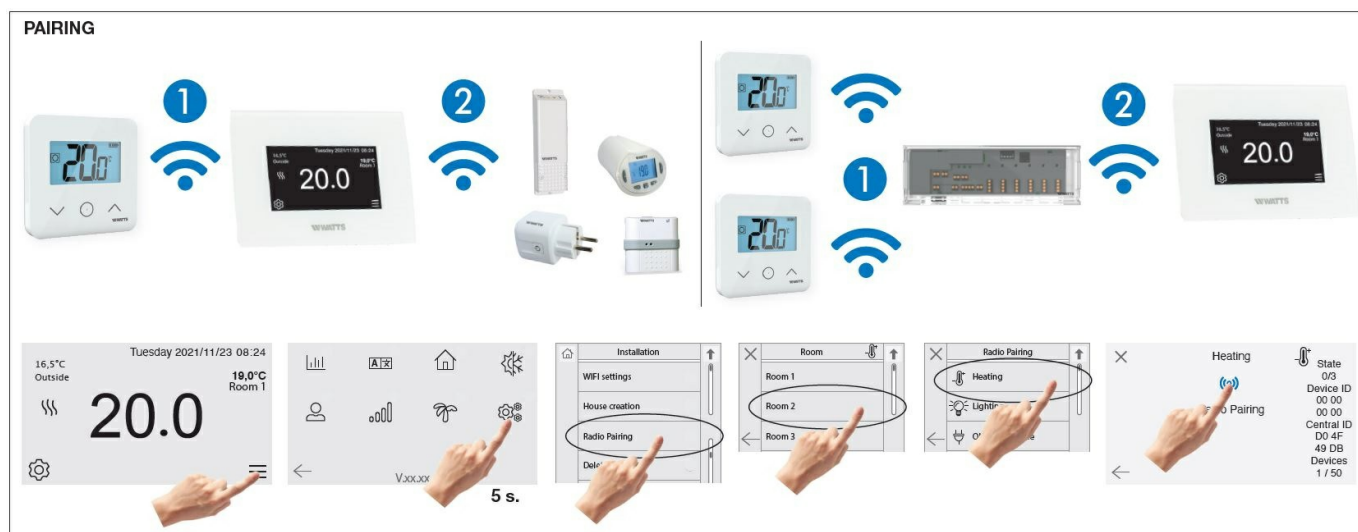
HOUSE CREATION



5 s.



PAIRING




Contact Information

Watts Electronics S.A.S

- B.P. N°10 – Z.A. des Tourettes, 43800 ROSIERES, France,
- T: +33(0) 471 57 40 49, F: +33(0) 471 57 40 90,
- wattswater.eu.

© 2023 Watts.

Documents / Resources

	<p>WATTS BT-CT03 RF Vision Wireless Central Control Device With Touch Screen [pdf] Installation Guide</p> <p>BT-CT02-RF, BT-CT03 RF Vision Wireless Central Control Device With Touch Screen, BT-CT03 RF, Vision Wireless Central Control Device With Touch Screen, Wireless Central Control Device With Touch Screen, Central Control Device With Touch Screen, Control Device With Touch Screen, Device With Touch Screen, Touch Screen</p>
--	--

References

- [W Home | Watts Europe](#)
- [HOME](#)
- [User Manual](#)

[Manuals+](#), [Privacy Policy](#)

This website is an independent publication and is neither affiliated with nor endorsed by any of the trademark owners. The "Bluetooth®" word mark and logos are registered trademarks owned by Bluetooth SIG, Inc. The "Wi-Fi®" word mark and logos are registered trademarks owned by the Wi-Fi Alliance. Any use of these marks on this website does not imply any affiliation with or endorsement.