



WaterScience SFU-717 Shower Tap Filter User Manual

[Home](#) » [WaterScience](#) » WaterScience SFU-717 Shower Tap Filter User Manual 

Contents

- [1 WaterScience SFU-717 Shower Tap Filter](#)
- [2 Product Information](#)
- [3 Introduction](#)
- [4 Main Benefits](#)
- [5 Parts & Accessories](#)
- [6 Installation on Wall / Overhead-showers](#)
- [7 Installation on Hand-showers fixtures](#)
- [8 Installation on Taps & faucets](#)
- [9 Instructions for Cartridge cleaning / reverse flushing](#)
- [10 Troubleshooting](#)
- [11 FAQ](#)
- [12 Warranty Information](#)
- [13 Documents / Resources](#)
 - [13.1 References](#)
- [14 Related Posts](#)



WaterScience SFU-717 Shower Tap Filter



Product Information

Specifications

- Patented KDF technology from KDF Fluid Treatment Inc., USA
- Eliminates up to 90% chlorine* in water
- Reduces effects of hard-water salts
- Filter cartridge capacity: 25,000 liters
- Fits standard 1/2 shower connectors and taps with 24 mm aerators

Main Benefits

WaterScience CLEO uses patented KDF technology to remove chlorine and reduce the effects of hard-water salts. This ensures that your skin is protected from harmful chemicals and prevents the settling of hard-water salts.

Parts & Accessories

- Top connector
- Top shell
- Cartridge O Ring
- Cartridge
- Bottom shell
- Bottom connector
- Aerator adaptor
- Mesh-washer
- Washer

Installation

Installation on Wall / Overhead-showers

Instructions are the same for wall-mounted shower arms and overhead showers. CLEO will fit on all standard (1/2

BSP) shower arms.

Installation on Hand-showers fixtures

1. Attach the CLEO to the bottom thread connector of your hand-shower.
2. Rotate clockwise to tighten fully. Use a spanner if needed.
3. If there are leaks, check and insert the washer provided in the installation kit, then tighten again.

Installation on Taps & faucets

CLEO will fit on all standard taps & faucets with a 24 mm aerator.

Cartridge Replacement

To replace the filter cartridge, follow the instructions provided in the user manual.

Cartridge Cleaning

To clean the cartridge and perform reverse flushing, refer to the instructions provided in the [user manual](#).

Troubleshooting

Low Water Pressure

If the water pressure is too low for a comfortable shower right after installation:

- Remove the water-saving flow restrictor/mesh washer located inside the top connector.
- Replace it with a regular washer provided in the installation kit.

Reduced Water Flow

If the water flow from the shower & tap filter has gradually reduced:

1. The filter may not have been used for several days, causing sediments to solidify. Run water through the filter to remove solidified sediments.
2. There may be sediment accumulation inside the cartridge, causing clogging. Replace the cartridge if necessary.
3. Check for sediment accumulation in the flow restrictor/mesh washer. Clean or replace if needed.
4. If the cartridge has reached its capacity of 25,000 liters, replace it with a new one.

Water Leaks

If water leaks from the outer shell joint:

Re-seat the O Ring of the cartridge and reinstall it. This should solve the leak issue.

FAQ

• Q: Can the CLEO filter remove 100% of chlorine?

A: The CLEO filter can eliminate up to 90% of chlorine from the water.

• Q: How often should I replace the filter cartridge?

A: The filter cartridge should be replaced after filtering approximately 25,000 liters of water.

• Q: Can the CLEO filter be used with any shower or tap?

A: The CLEO filter is designed to fit standard 1/2 shower connectors and taps with a 24 mm aerator.

- **Q: What should I do if the water flow from the filter reduces gradually?**

A: Follow the instructions provided in the troubleshooting section for reduced water flow.

Version 1.1 Copyright © 2017 Aquagenics R&D India Pvt. Ltd. All rights reserved.

No part of this publication may be reproduced, distributed, or transmitted in any form or by any means, including photocopying, recording, or other electronic or mechanical methods, without the prior written permission.

Introduction

- Thank you for choosing the CLEO SFU 717 shower & tap filter from WaterScience.
- The CLEO SFU 717 is a versatile filtration device that can be attached to almost any bath fixture – taps, wall showers, hand showers and overhead showers.
- As you may already be aware, Chlorine & hard-water are among the leading causes of hair fall, dry skin and other dermatological conditions. Most of us won't know where our water comes from or what it contains.
- We have tried and changed hair and skin-care products – but what good are shampoos, conditioners and creams when the problem is the water itself?
- The solution is to filter out harmful contaminants, before they reach the body. With its unique 4 layer filtering system, the CLEO fights chlorine and hard-water salts to give you clean and healthy water.

1. **micro-sieve layer**

filters sediments, micro-particles &

2. **impurities**

hardness removal layer reduces effects of hard-water salts and limescale

3. **chlorine removal layer**

reduces up to 90% chlorine and heavy metals like lead and mercury

4. **nano-silver carbon layer**

removes bad smell and prevents bacterial growth



- WaterScience CLEO uses patented KDF technology from KDF Fluid Treatment Inc., USA, to eliminate up to 90% chlorine* in your water.
- Effects of hard-water salts are reduced by a proprietary combination of Zeolites and hardness dispersant media. This ensures that hard-water salts are filtered, reduced and washed away, and do not settle on your skin.

“As tested by KDF Fluid Treatment Inc., USA

- Both KDF and Nano Silver Carbon have antimicrobial and bacteriostatic functions, and suspended impurities get trapped inside the cartridge.
- Thus, with its unique 4 layer filter, the CLEO reduces chlorine, hard-water salts and other impurities giving you clean and healthy water for improved hair and skin!
- Read on to learn more about your CLEO Shower Filter.

Main Benefits

Reduces Hair-fall

- Two major causes of hair-fall are chlorine and hard water salts. Chlorine draws away moisture from your skin and scalp, leading to dryness, thinning, breakage and loss of hair. Hard water salts can block pores on your hair follicles and cut off essential nutrition which leads to premature greying and hair fall.
- When you shower, heat opens pores and allows chlorine to seep into your skin – this is known as dermal absorption. A 15 minute shower can absorb up to 40% more chlorine into your body, than drinking 2 liters of the same water.
- KDF filtration media eliminates up to 90% chlorine, while the hardness removal layer ensures hard water salts don't settle on hair and skin. The Nano Silver Carbon layer is also extremely effective at reducing chlorine – that's double protection from chlorine for you. This, along with the hardness removal layer keeps your hair healthy and shiny!

Protects Skin

- Chlorine strips the skin of its natural oils and causes it to dry and crack. This leads to wrinkles and darkening of skin – the signs of premature aging.
- Dermal absorption of chlorine is also known to aggravate skin conditions such as eczema and cause rashes and allergies to healthy skin. Hard-water salts block pores on your skin which can lead to acne, rashes and skin-allergies as well.
- The KDF and Nano Silver Carbon layers in your CLEO Shower Filter prevent chlorine from damaging your skin. The proprietary hardness-removal layer ensures that hardwater salts are neutralized, thus protecting your skin and keeping it healthy and youthful!

Prevents Bacteria

- Bacteria and other microbes can colonize your showerhead and pose a health hazard. They can aggravate skin

rashes, wounds etc. and showerhead biofilm could contain Mycobacterium Avium which if inhaled, leads to infections. This can be problematic especially for children.

- KDF and Nano Silver Carbon in your CLEO shower filter are bacteriostatic and have anti-microbial properties – so it inhibits growth of bacteria/ microorganisms inside the shower filter. That guarantees a safer, healthier and a refreshing showering experience!

Removes Bad Odours

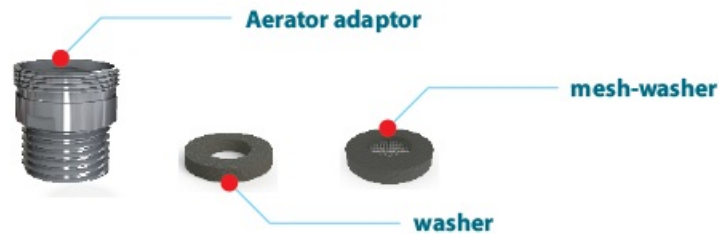
Bad odours can happen from naturally occurring minerals and from external contamination to your water. The CLEO Shower Filter can remove bad odours in water – the 'chemical' smell from Chlorine in bleaching powder used as a disinfectant in water and the 'rotten egg' smell caused by Hydrogen Sulphide.

Prevents Lime Scale

- Hard water contains calcium and magnesium bicarbonate salts. When water dries, these salts tend to buildup and form stubborn deposits on your bathroom fittings, taps, pipes and tiles. It is very difficult to get rid of lime scale as it usually requires strong cleaning agents and acids.
- The proprietary hardness removal layer in your CLEO Shower Filter converts these stubborn salts into easily removable crystalline form and helps keep your bathroom floor & walls limescale-free. Most of salts wash away with water, and whatever is left behind can easily be removed with regular cleaning liquids!

Parts & Accessories





CLEO SFU-717 fits on all standard 1/2" shower connectors and taps with 24 mm aerators.

Installation on Wall / Overhead-showers

1. Step 1

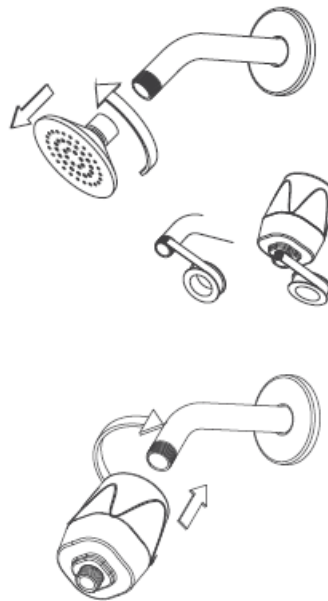
1. Disconnect your shower-head from the shower arm & clean the thread with sand paper to remove any debris.
2. Now wrap the thread of the shower arm with Teflon tape to prevent leaks.

2. Step 2

1. Ensure 2 washers are inserted into the top connector of the CLEO and wrap the bottom connector thread with Teflon tape to prevent leaks.

3. Step 3

Align the CLEO top connector with the thread of the shower arm & rotate clockwise to tighten.



4. Step 4

1. **Flushing** – Step away from the path of the water, turn on the water and let the water flow out for 3 minutes.
2. This will flush out discoloured water – this is just carbon dust, and it is not harmful.

5. Step 5

1. Align the bottom thread connector of your CLEO with the shower-head connector and rotate clockwise to tighten fully. You will need to use a washer for the shower head connector as well.
2. Use a spanner to tighten. If there are leaks, check/insert washers and tighten again.



Instructions are the same for wall mounted shower arms and overhead showers. CLEO will fit on all standard (1/2" BSP) shower arms

Installation on Hand-showers fixtures

1. Step 1

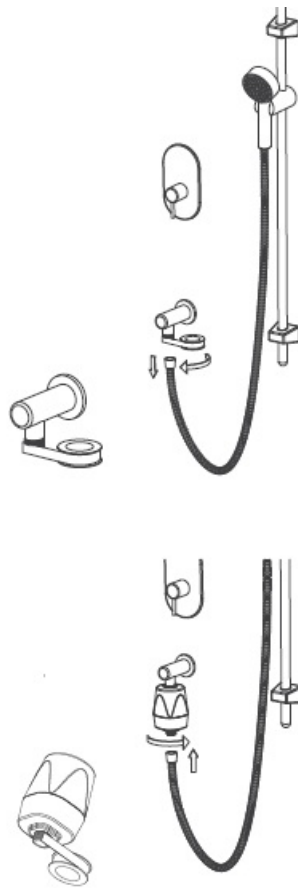
1. Disconnect the hose from the tap & clean the thread with sand paper to remove any debris.
2. Now wrap the thread of the tap with Teflon tape.

2. Step 2

Ensure at least 2 washers are inserted into the top connector of the CLEO and wrap the bottom connector thread with Teflon tape to prevent leaks

3. Step 3

Align the top connector of the CLEO with the thread connector of the tap & rotate clockwise to tighten

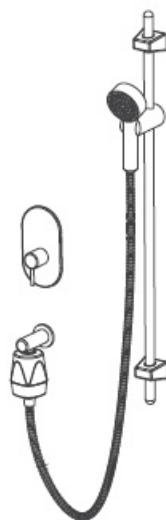


4. Step 4

1. Flushing – Turn on the water and step away from the path of the water. Let the water flow out for 3 minutes.
2. This will flush out discoloured water – this is just carbon dust, and it is not harmful.

5. Step 5

1. Align the hose connector of your hand-shower with the bottom thread connector of your CLEO and rotate clockwise to tighten fully.
2. Use a spanner to tighten fully. If there are leaks, check/insert washer and tighten again.



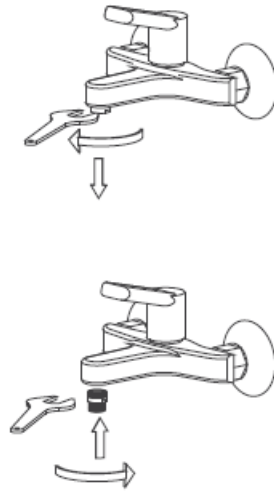
Installation on Taps & faucets

1. Step 1

Remove the aerator from the faucet / tap and connect the aerator-adaptor to the tap.

2. Step 2

Wrap the connector thread of the adaptor with Teflon tape to prevent leaks. Ensure at least 2 washers are inserted into the top connector of the CLEO.

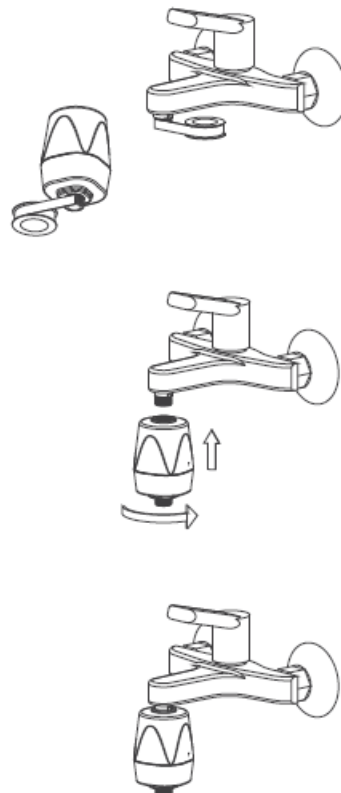


3. Step 3

Align the top connector of the CLEO with the aerator adaptor & rotate clockwise to tighten.

4. Step 4

1. Flushing – Turn on the water and step away from the path of the water. Let the water flow out for 3 minutes.
2. This will flush out discoloured water – this is just carbon dust, and it is not harmful.
3. Use a spanner to tighten fully. If there are leaks, check/insert washer and tighten again.



CLEO will fit on all standard taps & faucets with a 24 mm aerator.

Filter Cartridge

Replacement Instructions

Part No. SFC-UW 100

1. Step 1

Hold the top shell of the CLEO Shower & Tap filter firmly and turn the bottom shell counter-clockwise to open the filter.

2. Step 2

Remove the old cartridge. Insert new cartridge Red side up in to the bottom shell. Remember to remove packaging stickers from both sides of the cartridge.



3. Step 3

Align the treads of the top & bottom shells of the CLEO and rotate clockwise to tighten fully.

4. Step 4

Flushing – Turn on the water and step away from the path of the water. Let the water flow out for 3 minutes. This will flush out discoloured water – this is just carbon dust, and it is not harmful.



Instructions for Cartridge cleaning / reverse flushing

1. Step 1

Hold the top body of the CLEO Shower & Tap filter firmly and turn the bottom body counter-clockwise to open the filter unit and remove the cartridge.

2. Step 2

Gently tap the sides of the cartridge with the supplied spanner or against the wall to loosen lumps that may have formed inside.



3. Step 3

Flip cartridge and insert it Blue side up in to the bottom shell cavity. Align the treads of the top & bottom and rotate clockwise to tighten fully.

4. Step 4

1. Reverse Flushing – Turn on the water and step away from the path of the water. Let the water flow out for 3 to 5 minutes. This will flush out most of the sediments trapped inside.
2. If there is severe clogging, repeat steps 2 and 3.

5. Step 5

Re-insert the cartridge Red side up in to the bottom shell cavity, align to the top shell and close the filter.



Troubleshooting

- **SYMPTOM** : Water pressure if too low for a comfortable shower right after installation.
- **SOLUTION** : The CLEO comes with a water saving flow-restrictor / mesh washer. If the incoming pressure or flow rate is low in your plumbing line, remove the flow restrictor / mesh washer (located inside the top connector)and use a regular washer (provided in the installation kit)
- **SYMPTOM** : Water flow from the shower & tap filter has reduced gradually / after disuse
- **SOLUTION** : When water pressure gradually drops from your CLEO shower & tap filter, it is usually because of one of these reasons
 - The filter has not been used for several days & the sediments trapped inside may have solidified

- There is sediment accumulation inside the cartridge and has clogged the filter (This is normal in areas with high sediment levels)
- There is sediment accumulation in the flow restrictor / mesh-washer
- The cartridge has crossed its capacity of 25,000 liters and reached the end of its life.

Note : If the CLEO shower & tap filter is left unused for more than 2 weeks, there are chances of lump formation from sediments getting solidified. This could render the cartridge unusable and may need to be replaced.

- **SYMPTOM :** Water leaks from the outer shell joint
- **SOLUTION :** This is likely due to the O Ring of the cartridge not in position. You can re-seat the O Ring and reinstall the cartridge and this should solve the leak.
- **SYMPTOM :** Water leaks from the top / bottom connectors
- **SOLUTION :** If the leak is from the top connector, you can check /re-insert / add additional the washers and wrap the shower/tap connector as well. Check the washers – you may need to use 2 or 3 washers to get the right leak-free fit for certain types of shower-heads / hand showers / shower arms. You can re-seat the O Ring and reinstall the cartridge and this should solve the leak.

FAQ

- **Will the CLEO shower & tap filter reduce the TDS of my water?**

No, the CLEO is not designed to reduce TDS levels. TDS (PPM) merely means there is 'something' in your water – eg. if you dissolve 10g of sugar in a glass and 10g of salt in another glass, the TDS value would be similar. So, TDS is not always the best measurement of water quality – as it can be good, bad or harmless! A reduction in TDS can happen only with drinking water filters – RO / Nano filters.

- **How often should I change the Cartridge?**

The cartridge is designed to filter approximately 25,000L, which is roughly 6 months of use. for However if you live in an area with high sediment contamination, the cartridge might get choked sooner.

- **Can I use the CLEO with hot water?**

Yes, CLEO works well with hot water up to 70 degrees Celsius.

- **Will CLEO reduce Iron from water?**

No, CLEO cannot remove Iron content from water.

- **Are there any ingredients that can cause allergy?**

All ingredients are completely safe and the same kind of filtration media that's found in drinking water systems. However, if you do develop any kind of allergic reaction, discontinue use immediately and consult a doctor.

- **How soon will my hair-fall reduce?**

Hair-fall can be caused by one or a combination of difference reasons – bad water, diet, hereditary, reaction to medication or even stress! The CLEO shower filter is designed to work well for most Indian water conditions – city supply or bore-well supply. Typically within 4 to 6 weeks you should start seeing a difference in your hair/skin health. Results, of course would vary from person to person and also for different water conditions.

Warranty Information

- Please read this warranty information carefully. Attach your purchase receipt to the warranty card and keep in a safe place. You must produce both warranty card and proof of purchase in the event of a warranty repair being required.

- Manufacturer's Warranty covering parts and labour for servicing.
- Aquagenics R&D India Pvt. Ltd undertakes to: Repair or, at its option, replace without cost to the owner either for material or labour any part of the Product, the serial number of which appears on the Product, which is found to be defective within TWO YEARS from the date of purchase.
- Within the Warranty period, we guarantee service/ repair of any defects in the product resulting from faults in material or workmanship by either repairing or replacing the complete unit, at our discretion. Parts replaced or repaired by us are warranted for the balance of the original warranty or ninety (90) days, whichever is longer.
- This warranty does not cover: damage due to improper use, accident, damage caused by Act of God, pick up/ drop of product for service, transportation cost, periodic maintenance, etc. Repairs when the appliance has been dismantled, repaired or serviced by other than an AUTHORISED CUSTOMER SERVICE CENTRE, or authorised technician are also not covered under warranty.
- To obtain service within the warranty period: Contact our customer care team on care@waterscience.in or 9242 000 123

Filter Cartridge Warranty

- CLEO Shower Filter cartridges are covered by warranty for 90 days from the date of purchase against defects in material or workmanship. It does not cover damage due to improper use, physical damage, alteration or damage caused by Act of God, etc.
- Cartridge getting choked due to sediment accumulation or due to prolonged disuse are not covered under warranty.
- **NOTE** : This Warranty is an extra benefit and does not affect your legal rights and applies only to products purchased in India and the UAE. Please keep this Warranty Card in a safe place.

Medical Advice Notice & Disclaimer

- Content in the booklet is for informational purposes and should not be considered medical advice. Product information is not intended to diagnose, treat, cure or prevent any disease or medical condition.
- All ingredients in the filter are completely safe and are not known to cause any allergy.
- However, if you develop any allergy, discontinue use of the product and immediately consult a doctor. WaterScience is not liable for any individual reaction to any particular ingredient.
- Please consult a doctor if you have any questions about a particular health condition.

WaterScience CLEO uses patented KDF technology tested and certified for chlorine removal by the National Sanitation Foundation (NSF) who is a US water supply auditor and World Health Organization member.

care@waterscience.in
www.waterscience.in/care

9242 000 123

Documents / Resources



[WaterScience SFU-717 Shower Tap Filter](#) [pdf] User Manual
SFU-717 Shower Tap Filter, SFU-717, Shower Tap Filter, Tap Filter, Filter

References

-  [Manual-Hub.com - Free PDF manuals!](#)
- [User Manual](#)

Manuals+. Privacy Policy

This website is an independent publication and is neither affiliated with nor endorsed by any of the trademark owners. The "Bluetooth®" word mark and logos are registered trademarks owned by Bluetooth SIG, Inc. The "Wi-Fi®" word mark and logos are registered trademarks owned by the Wi-Fi Alliance. Any use of these marks on this website does not imply any affiliation with or endorsement.