



# Waterdrop WD-G3-CB Reverse Osmosis System Filter Instruction Manual

[Home](#) » [Waterdrop](#) » Waterdrop WD-G3-CB Reverse Osmosis System Filter Instruction Manual 

# waterdrop

Installation instructions  
Waterdrop replacement filter



**MODEL: WD-G3-N3CB**

Replacement for the following water filtration system:  
Waterdrop Reverse Osmosis Water Filtration System  
WD-G3-W/WD-G3-B/WD-G3-G/WD-G3P800-W



replacement element

Tested and Certified by NSF International in Model WD-G3-W against NSF/ANSI Standard 58 for the reduction of the claims specified on the Performance Data Sheet, and to NSF/ANSI 372 (<0.25% lead).

**FILTER LIFE:** Up to 12 months

**NOTE:** This filter should not be used with water that is microbiologically unsafe or of unknown quality without adequate disinfection before or after the system. Filter's life varies according to local water quality.

## Contents

### 1 GETTING STARTED:

### 2 STORAGE AND MAINTENANCE:

### 3 FREQUENTLY ASKED QUESTIONS:

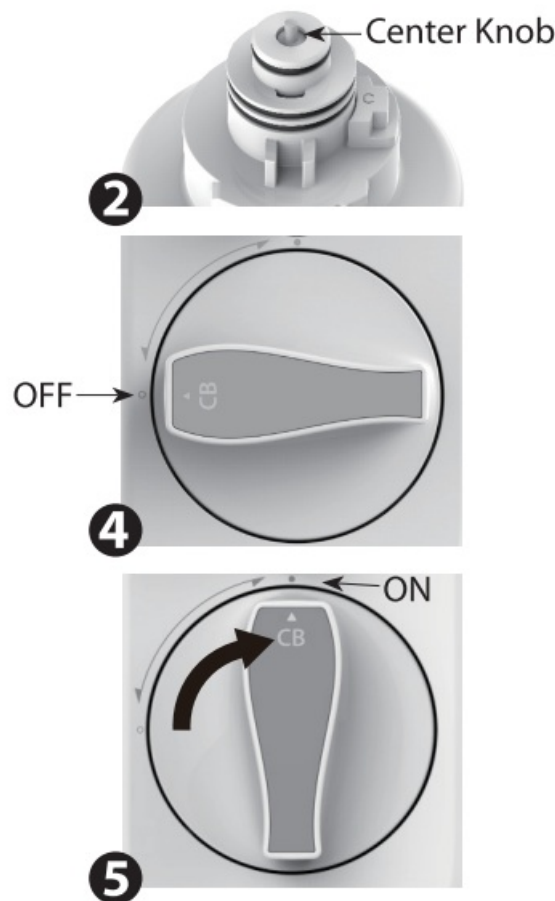
### 4 Documents / Resources

#### 4.1 References

## GETTING STARTED:

With the leak-free design, filters could be replaced directly without cutting off power and water, no tools required.

1. Before removing the filter, please turn off the faucet first and wait for 30s to fully release the internal pressure of the RO machine, which makes the filter easier to remove and install.
2. Twist off the old filter in counterclockwise direction;  
**NOTE:** After replacing CB filter, it's recommended to press the center knob protruding at the top of the old filter to release pressure to avoid water spills. Get a towel or bucket to catch any water drips.
3. Remove the shrink wrap and protective cap from the new filter;
4. Insert the new filter into the housing, align the arrow with the empty circle on the housing;
5. Apply slight forward pressure and rotate the filter clockwise 1/4 turn, until the arrow is aligned with the solid circle on the housing. You may hear a clicking sound when the filter is fitted into the place properly;
6. Press and hold the CB filter life indicator for 7 seconds until the system beeps and blue light stays on;
7. Turn on RO faucet to flush for 30 minutes until the front panel screen and faucet screen display TDS reading.



## STORAGE AND MAINTENANCE:

- Please replace the filter regularly according to the filter life indicator reminder.
- Stored filters do not expire. Keep your unused filters in a cool, dark, and dry place until you need them.
- Water source should meet the requirements of municipal tap water.
- It is recommended to avoid placing the unit in direct sunlight.

### **WARNING:**

- To reduce the risk of property damage due to water leakage, this filter **MUST** be installed in accordance with the manufacturer's specifications and instructions.
- Failure to follow instructions and operating specifications will void your warranty. Further, manufacturer assumes no responsibility or liability for damages arising out of misuse of the product.

## FREQUENTLY ASKED QUESTIONS:

Q: Why does filtered water taste funny?

A: 1) The filter is about to expire. Check the indicator reminder to confirm and replace it; 2) The system hasn't been used for a long time. Turn on the RO faucet, allow it to flush for a while before drinking.

Q: What will happen if I do not change my filter when the filter life indicator light turns red?

A: Over-used filters will degrade the filtration performance, causing contaminants to leak back into the water and adversely affect your health. It's recommended to replace the filter if the filter life indicator light turns red.

Q: Why is the filter life indicator still red after changing filter?

A: Forget or fail to reset the filter life indicator. Please reset it again: press and hold the CB filter life indicator for 7 seconds until the system beeps and blue light stays on.

## PERFORMANCE DATA SHEET

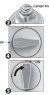
Standards	Substance	Inf. Average	NSF Specified Challenge Concentration	Ave. % Reduction	Average Product Water Concentration	Max Permissible Product Water Concentration	NSF Reduction Requirements	NSF Test Report
NSF58	TDS	750 mg/L	750 mg/L $\pm$ 20%	92.90%	62 mg/L	187 mg/L	$\geq$ 75%	J-003 56525

### Manufacturer Technical Support

Tel: 1-888-352-3558 (US)

E-mail: [service@waterdropfilter.com](mailto:service@waterdropfilter.com)

Documents / Resources

<div><div>Installation instructions</div><div>Waterdrop replacement filter</div><div></div></div>	<div><a href="#">Waterdrop WD-G3-CB Reverse Osmosis System Filter</a> [pdf] Instruction Manual WD-G3-CB Reverse Osmosis System Filter, WD-G3-CB, Reverse Osmosis System Filter, Osm osis System Filter, System Filter, Filter</div>
--	---

References

- [User Manual](#)