



# Waterdrop WD-CTF-03 Alkaline Countertop Water Filter User Manual

[Home](#) » [Waterdrop](#) » Waterdrop WD-CTF-03 Alkaline Countertop Water Filter User Manual 

## Contents

- [1 Waterdrop WD-CTF-03 Alkaline Countertop Water Filter](#)
- [2 Product Information](#)
- [3 FAQs](#)
- [4 System Specifications](#)
- [5 Part List](#)
- [6 Installation Instructions](#)
- [7 How to Choose the Right Adapter](#)
- [8 Filter Replacement](#)
- [9 Frequently Asked Questions](#)
- [10 Limited Warranty](#)
- [11 Performance Data Sheet](#)
- [12 Documents / Resources](#)
  - [12.1 References](#)
- [13 Related Posts](#)

# Waterdrop

**Waterdrop WD-CTF-03 Alkaline Countertop Water Filter**



## Product Information

**Model No.:** WD-CTF-03

## Specifications

<b>System Model</b>	WD-CTF-03
<b>Replacement Model No.</b>	WD-CTF-03A
<b>Rated Capacity</b>	320 gallons / 1,211 liters
<b>Rated Flow</b>	0.5 gpm / 1.89 pm
<b>Operating Working Pressure</b>	15-100 psi / 100-689 kPa

## Components and Diagram

The filtration system includes the following parts:

- **A** Filter Housing
- **B** Base
- **C** Monitoring Base
- **D** Top cover
- **E** Water Outlet

- **F** Water Inlet
- **G** Adapter (×7)
- **H** Multiple sizes of washers and nuts

### Installation Instructions

1. Take out the aerator and choose the right adapter to connect your faucet threading to the filtration system.
2. Install the filtration system and turn on the faucet to start using purified water.

### How to Choose the Right Adapter:

- Try the threaded faucet adapters provided to find the one that fits.
- If none fit, use the universal adapter and secure it with the locking clip.

### Use Method

- To dispense filtered water, turn the switch on the system’s base.
- Ensure the switch is turned off after use to prevent leaks or damage to the system.

### Filter Replacement

- For optimum performance, it is highly recommended that you replace the filter element every 320 gallons or earlier if there is a noticeable reduction in flow rate.
- Always purchase genuine Waterdrop replacement filters for quality and compatibility.

### Performance Data Sheet

System Tested and Certified by IAPMO R&T against NSF/ANSI 42 for the reduction of the claims specified on the Performance Data Sheet, and NSF/ANSI 372 (≤0.25% lead).

### Substance Reduction

- The system has been tested and certified to reduce chlorine taste and odor in water entering the system.
- The concentration of these substances was reduced to a level that is less than or equal to the permissible limit for the water leaving the system, as specified by NSF/ANSI Standard 42. Laboratory conditions may vary in actual performance.

Substance	Influent Challenge Concentration	Percent Reduction	Product Water Concentration	U.S. EPA Level/NSF Maximum Permissible Product Water Concentration
Chlorine Taste and Odor	2.0 mg/L	97.63%	ND (Not Detected)	≥50%

**Caution:** Do not use microbiologically unsafe or unknown water quality water without adequate disinfection before or after the system.

## Manufacturer Technical Support

- **Tel:** 1-888-352-3558 (U.S.)
- **E-mail:** [service@waterdropfilter.com](mailto:service@waterdropfilter.com)
- **Manufacturer:** Qingdao Ecopure Filter Co., Ltd.

## FAQs

### Q: How do I install the filtration system?

- **A:** Remove the aerator from your faucet, choose the appropriate adapter, and follow the installation guide to connect the filtration system.

### Q: How often should the filter be replaced?

- **A:** Replace the filter every 320 gallons or if there is a noticeable reduction in flow rate.

### Q: What substances does the filtration system reduce?

- **A:** The system is certified to reduce chlorine taste and odor as per NSF/ANSI Standard 42.

### Q: Can I use water from any source with this filtration system?

- **A:** Use only with water that is microbiologically safe or has been adequately disinfected.

## About the System

- Thanks for choosing the Countertop Stainless-Steel Faucet Water Filtration System.
- The product adopts activated carbon block to provide you with healthy water and release beneficial minerals.
- Its multistage filtration can reduce harmful substances such as chlorine, lead, fluoride, etc.
- It can also inhibit the bacteria from building up. The system is made of food-grade 304 stainless steel to ensure quality and durability, and the precise design makes it easy to install.
- The system doesn't need a power supply and it produces no waste water.
- You can get both tap water and filtered water by a switch.

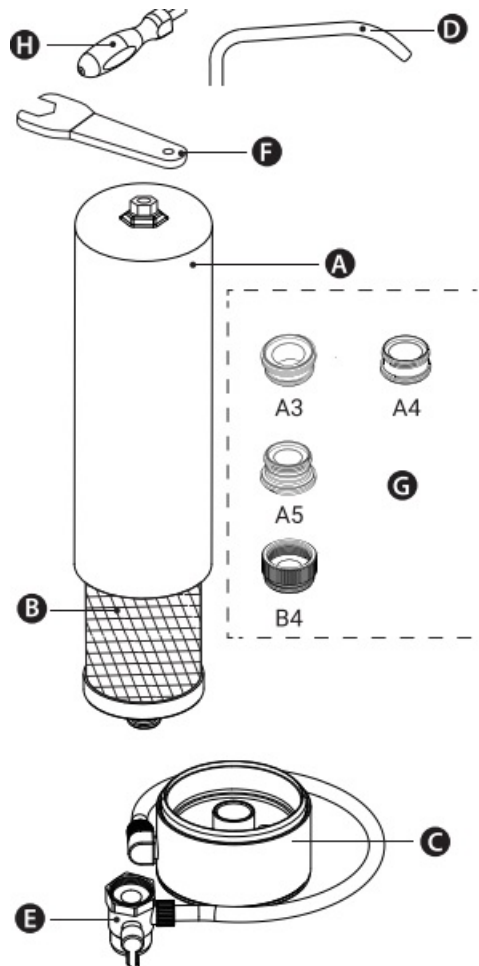
## System Specifications

- To achieve optimal performance, it is recommended to use the system within the system specifications.
- **System Model No** ..... WD-CTF-03
- **Replacement Model No** ..... WD-CFF-02
- **Rated Capacity** ..... 12 months or 8,000 gallons
- **Rated Flow** ..... 1.0 gpm/3.8 lpm (tested under 60 psi)
- **Operating Temperature** ..... 41-100°F/5-38°C
- **Operating Working Pressure** ..... 15-100 psi/1 00-689 kPa
- **NOTE:** Do not use water that is microbiologically unsafe or of unknown quality without adequate disinfection

before or after the system.

## Part List

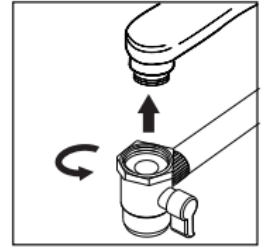
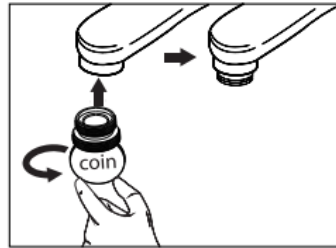
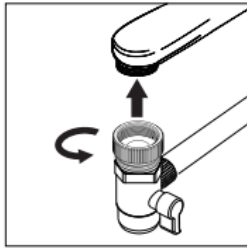
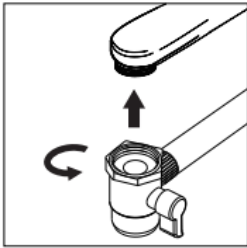
- **(A)** Filter housing
- **(B)** Filter
- **(C)** Stainless-steel base
- **(D)** Spout
- **(E)** Mounting base
- **(F)** Wrench NO.1
- **(G)** A3 adapter (15/16"-27")
  - **A4** adapter (13/16")
  - **A5** adapter (M18.5)
  - **B4** adapter (M18.5)
- **(H)** Wrench NO.1



## Installation Instructions

1. Take out the system and accessories.
2. Remove the faucet's aerator and choose the right adapter to match your faucet threading.
  - Make sure the washer between the faucet and the system is installed firmly.

## How to Choose the Right Adapter



1. For external threaded faucets, please connect the adapter directly to the mounting base (E) to the faucets. Please select adapter (B4) if the mounting base (E) is not fitted to the faucet.
2. For internal threaded faucets, select the appropriate adapter (A3/A4/A5) according to the thread size. connect it to the faucet and tighten them with a coin like below. Make sure the white sealing seal ring is in the mounting base (E), then connect the adapter to the the mounting base(E), please install it firmly.
3. Screw the filter housing and base with wrench (F) and wrench (H). [Figure 1.1]
4. Put the water system in its proper position. Switch the lever to the level position and run water to the system slightly. Flush it for 3-5 minutes during the first use. [Figure 1.2]

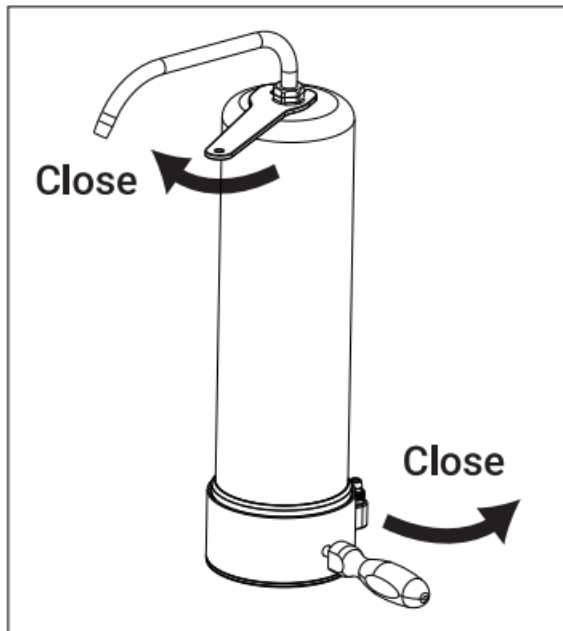


Figure 1.1

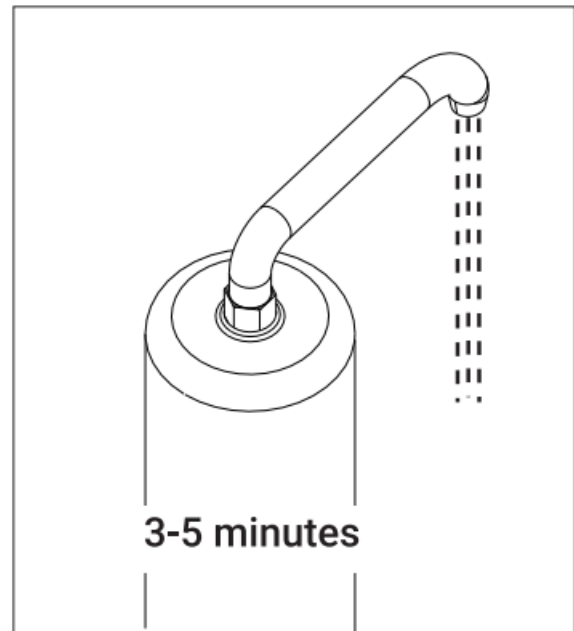


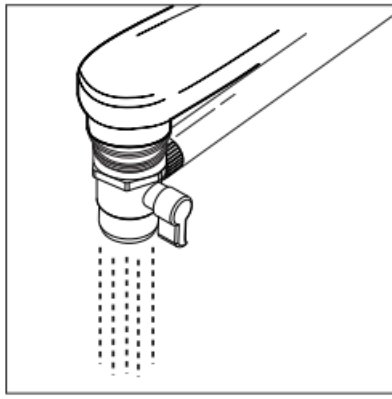
Figure 1.2

**Tips:** If there is water leakage at the connecting position between the faucet and the system, it is recommended to use the wrench to assist in tightening the nut on, or use the Teflon tape inside the instruction package to avoid leakage.

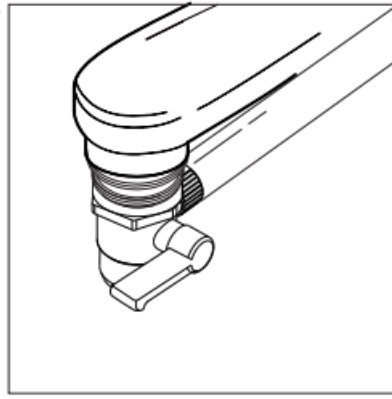
**NOTE:** There may be a small amount of black water during the first use. This is a normal phenomenon because of the activated carbon. Feel free to use the water after it becomes clear.

### Use Method

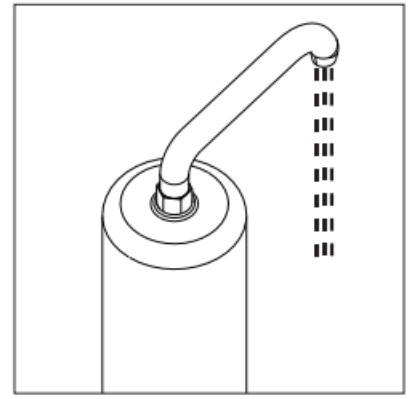
1. Switch the lever to the downward direction to get tap water. [Figure 1.3]
2. Switch the lever to the level direction to get pure water. [Figure 1.4]



**Figure 1.3**



**Figure 1.4**

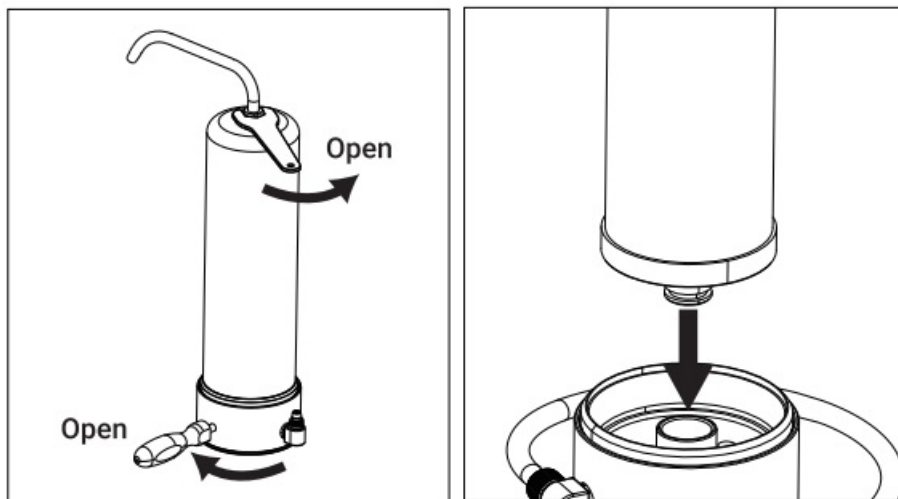


**NOTE:**

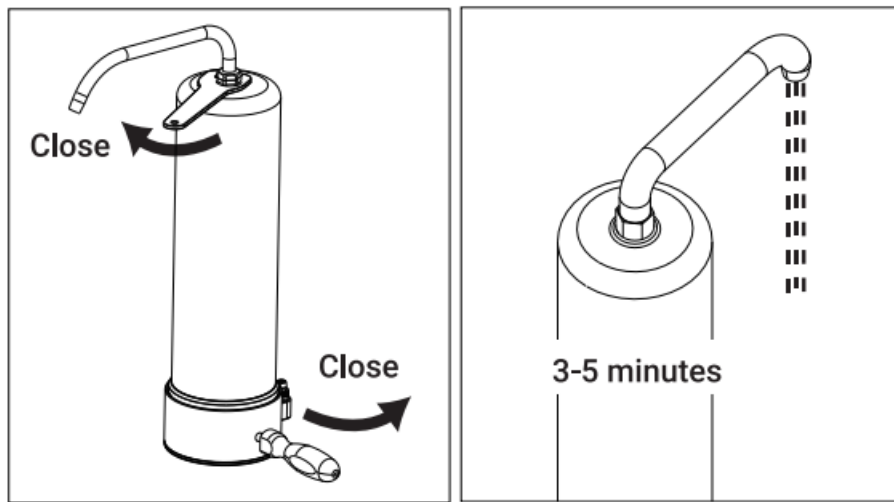
1. Before the first use, run water for 3-5 minutes in the “pure water” position. Do not run water at a temperature higher than 100°F/38°C. There may be a small amount of black water and the sound of water pushing air out of the filter during the first use. This is a normal phenomenon because of the active carbon. Feel free to use the water after it becomes clear.
2. Check for water leakage. In the event of leakage, refer to the FAQ or contact customer service.

**Filter Replacement**

- For optimum performance, it is highly recommended that you use a genuine Waterdrop faucet replacement water filter.
- To keep the water fresh, it is also advisable to change your filter every 12 months or 8,000 gallons, whichever comes first. This will vary based on your water usage and water quality.



1. Place the system in the countertop, and use wrench (F) and wrench (H) provided in the package to unscrew the filter housing and the base).
2. Remove the expired filter from the system and insert the new filter into the base (C). Make sure the sealing ring is installed firmly.
3. Screw the filter housing and base with wrench (F) and wrench (H) provided in the package.
4. Turn on the faucet and flush the new filter for 3-5 minutes.



## Warnings

1. Do not use with water above 100°F/38°C.
2. Flush the filter for 3-5 minutes before the first use or after filter replacement.
3. If the system has not been used for over 24 hours, run water for 1 minute before use.
4. Do not touch the filtered water outlet of the system in order to prevent bacteria from building up.
5. Protect the filter system from freezing temperatures, frost, snow, sleet, and ice.
6. Clean the exterior of the system with a soft cloth to maintain its appearance and service life.
7. Replace the filter every 12 months or 8, 000 gallons for best filtration performance.

## Frequently Asked Questions

### Q: Why does the filtered water taste weird?

- **A:** The filter is not installed appropriately, or it should be replaced. Please reinstall it in a correct way.
- If there is still bad taste, please replace the filter.

### Q: Why isn't the TDS value reduced after filtration?

- **A:** TDS stands for total dissolved solids. It is composed of inorganic salts and a small amount of organic matter.
- This system cannot reduce the TDS value because it removes harmful substances while keeping beneficial trace elements, which can increase the TDS value.

### Q: Why does water leak between the outlet valve and the faucet?

- **A:** Remove the filtration system from the faucet and check on whether the sealing gasket at the connection is placed correctly.
- Ensure that the thread between the faucet and the filtration system is screwed in firmly so that the sealing gasket can work.

### Q: Why is the water leaking or dripping?

- **A:** Check whether the selected adapter is correct or whether the adapter sealing ring and the base sealing ring



are installed firmly.

- Flush the filter for 3-5 minutes to activate it, and then there will be no leaks or drips.

## Limited Warranty

- The Waterdrop Activated Carbon Block Faucet Filtration System ( Model No.: WD-CTF-03) offers 1-year warranty, which covers defects in materials and workmanship from original date of purchase. If the product proves to be defective within 1 year from the date of purchase, please call our technical support hotline.
- During the warranty period, we will replace or repair any part which is deemed to be defective, if product has not been subjected to tampering, alteration or improper use after delivery, and has not been repaired by the manufacturer.

The product is not warranted against misuse, use in abnormal operation temperature conditions, conditions outside listed operating parameter, use in commercial operations or any other manner outside the "System Specifications" set forth in the owner's manual. Our obligation does not include the cost of transportation. We are not responsible for damage in transit, and claims for such damage should be presented to the carrier by the customer.

- **NOTE:** It does NOT apply to any filter cartridge, which has a life expectancy that varies based on incoming water quality.

## Performance Data Sheet

- System Tested and Certified by IAPMO R&T against NSF/ANSI 42 for the reduction of the claims specified on the Performance Data Sheet, and NSF/ANSI 372 ( $\leq 0.25\%$  lead).




## Substance reduction:

- The system has been tested and certified by the IAPMO R&T International according to NSF/ANSI Standard 42 for the reduction of the substances listed below.
- The concentration of the indicated substances in water entering the system was reduced to a concentration less than or equal to the permissible limit for the water leaving the system, as specified by NSF/ANSI Standard 42.
- While testing was performed under standard laboratory conditions, actual performance may vary.

NSF/ANSI Standard 42 – Aesthetic Effects				
Substance	Influent Challenge Concentration	Percent Reduction	Product Water Concentration	U.S. EPA Level/NSF Maximum Permissible Product Water Concentration
Chlorine Taste and Odor	2.0 mg/L	97.63%	ND	≥50%

- Do not use with water that is microbiologically unsafe or of unknown water quality without adequate disinfection before or after the system.
- **Manufacturer Technical Support**
- **Tel: 1-888-352-3558 (U.S.)**
- **E-mail: [service@waterdropfilter.com](mailto:service@waterdropfilter.com)**
- **24/7 365 Sarico**
- **Made in China V001**
- **Qingdao Ecopure Filter Co., Ltd.**

## Documents / Resources

 <p>Waterdrop Model No. WD-CTF-03</p> <p>Countertop Stainless Steel Faucet Filtration System</p>	<p><a href="#">Waterdrop WD-CTF-03 Alkaline Countertop Water Filter</a> [pdf] User Manual WD-CTF-03, WD-CTF-03 Alkaline Countertop Water Filter, Alkaline Countertop Water Filter, Countertop Water Filter, Water Filter, Filter</p>
---	--

## References

- [User Manual](#)