



Waterdrop Water WD-UB system Direct Connect Undersink Water Filtration System Instruction Manual

[Home](#) » [Waterdrop](#) » Waterdrop Water WD-UB system Direct Connect Undersink Water Filtration System Instruction Manual 

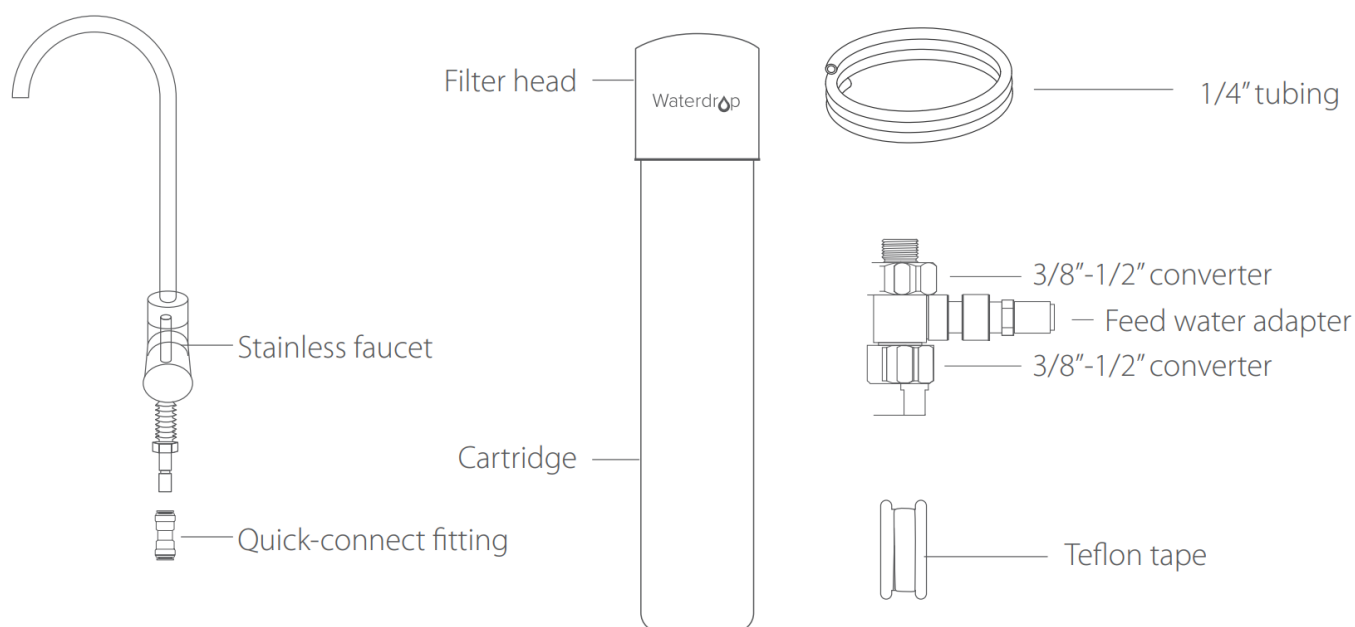
Waterdrop Water WD-UB system Direct Connect Undersink Water Filtration System

Waterdrop

Contents

- [1 Parts List](#)
- [2 Specifications](#)
- [3 Precautions](#)
- [4 Installation of the filter system](#)
- [5 To disconnect](#)
- [6 Filter replacement](#)
- [7 Frequently asked questions](#)
- [8 1 -year quality assurance](#)
- [9 Manufacturer Technical Support](#)
- [10 Documents / Resources](#)
 - [10.1 References](#)
- [11 Related Posts](#)

Parts List



Specifications

Operating temperature	2-38°C/35-100°F
Working pressure	10-100psi (0.7-6.8bar)
Flow rate	0.75gpm (2.83lpm)
Filter capacity	WD-RF10/WD-RF10-UF/MZ/AK: up to 11,000 gallons
	WD-RF15/WD-RF15-UF/MZ/AK: up to 19,000 gallons
	WD-RF17/WD-RF17-UF/MZ/AK: up to 24,000 gallons
Feed water requirement	Municipal tap water

Note:

1. If using well water as the source, please make sure the feed water has been through a pre-filtration system,

otherwise, large particles in well water will clog the filter easily and shorten filter life.

2. The above form lists model numbers of only black filters. Please note that the white filter is different from the black filter only in color. They have the same filter material and filtration capacity.
3. Actual filter life varies according to local water quality

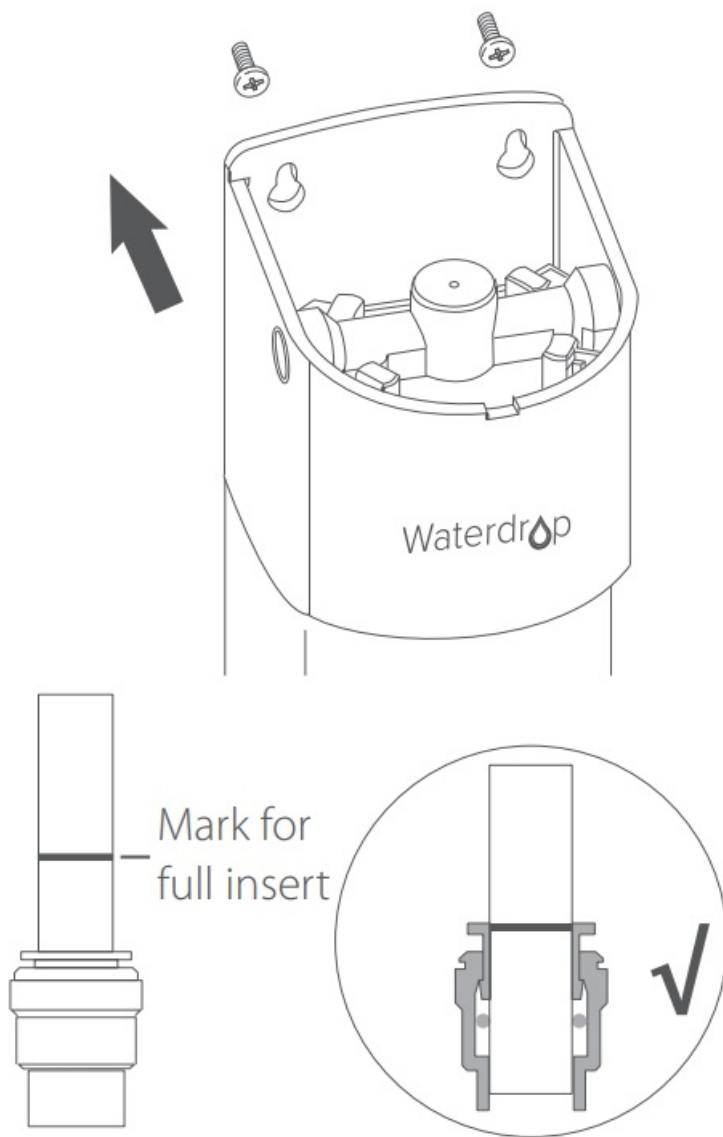
Precautions

- Do not use it with water that's microbiologically unsafe or of unknown quality without adequate disinfection.
- For use only with cold water.
- Do not freeze the filter, as this can cause cracking and water leakage.
- Do not allow children under 3 years old to have access to small parts during installation of this product.
- This installation must comply with all applicable state and local regulations.
- Turn off the water supply while replacing the filter.

Installation of the filter system

Step 1: Fix the filter head and the filter

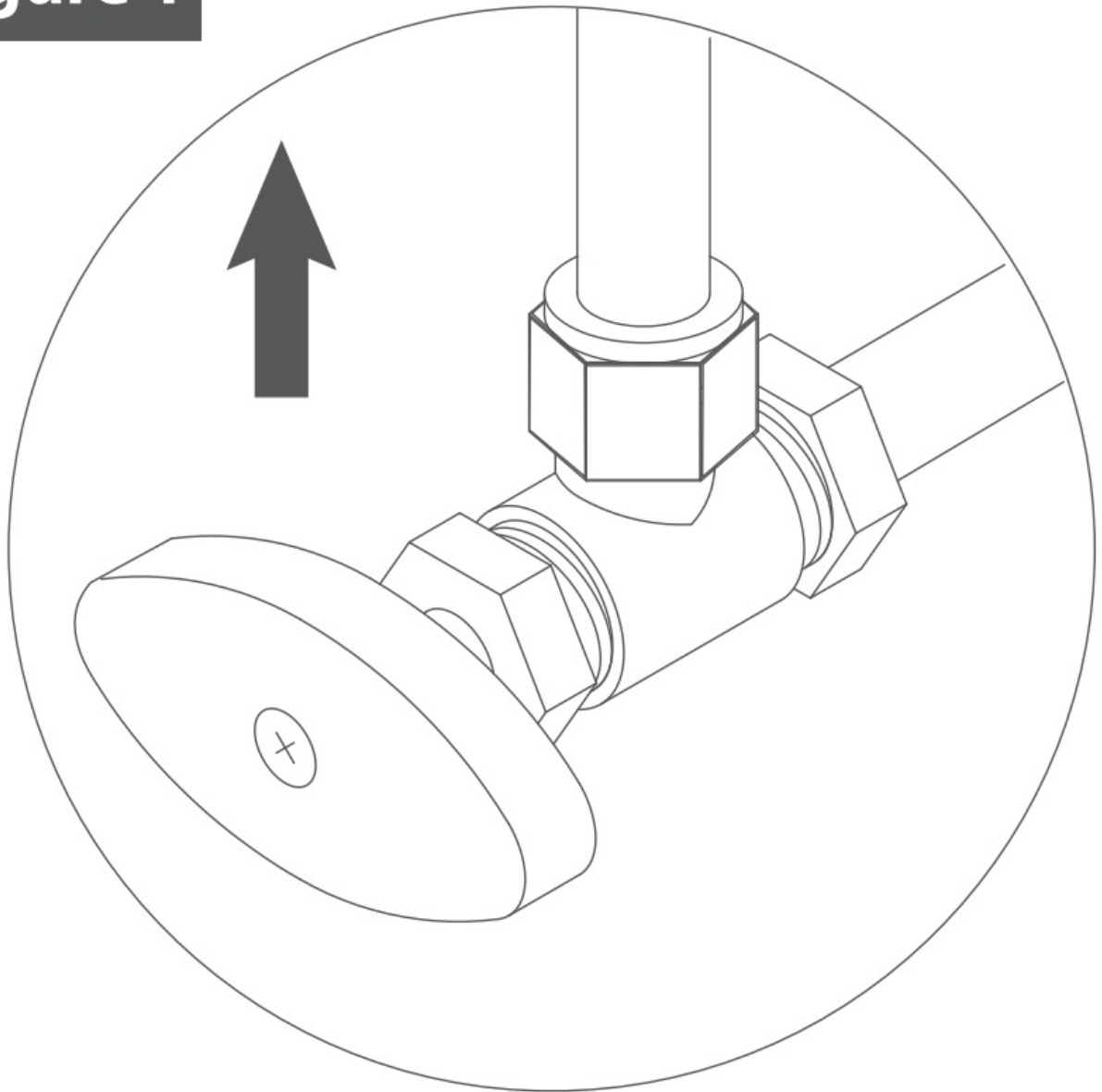
1. Paste the assistant label to finish drilling. (**Note:** Mount the water filter at least 2 inches higher than the ground for easier filter change.)
2. Install the screw and reserve enough space to hang the filter.
3. Hang the filter system on the screw.



Step 2: Connect the water supply (cold water only)

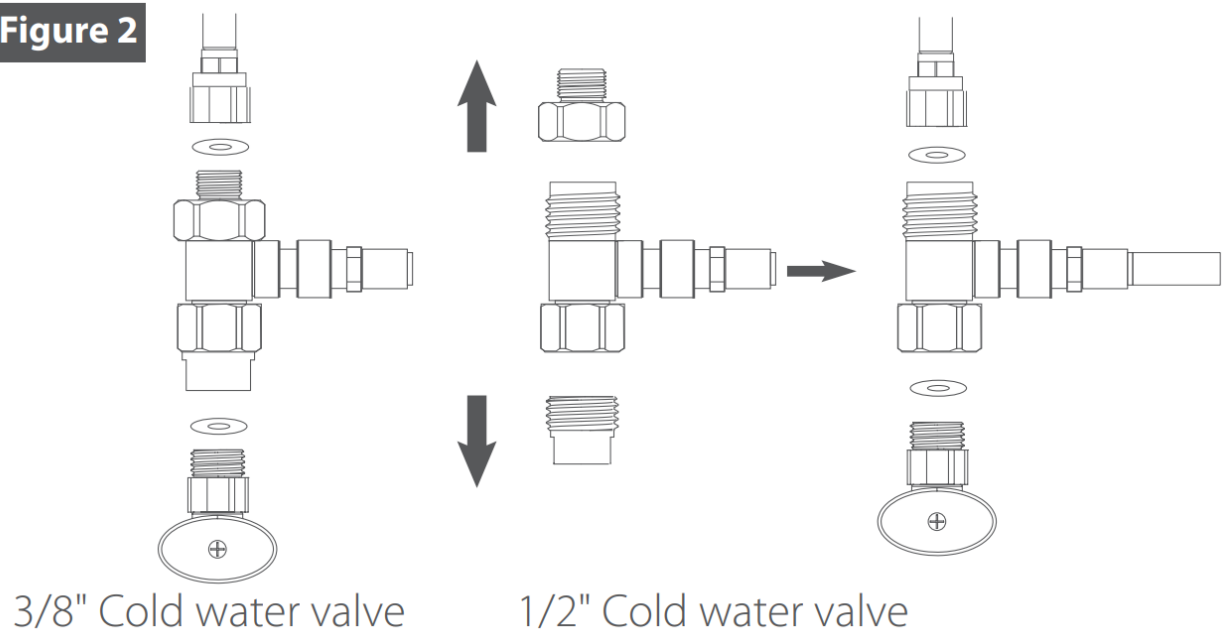
1. There is an existing mark at the end of the tubing for you to confirm if the tubing is fully inserted into the fitting.
2. Connect one end of the 1/4" PE tubing to the inlet of the filter head. Until you reach the mark on the tubing.
3. Shut off the water supply and remove the faucet hose. **(Figure 1)**

Figure 1



4. Connect the feed water adapter and ensure that the rubber O-ring is loaded.
 - If the angle valve outlet is 3/8", connect it to the water supply and faucet hose directly.
 - If the angle valve outlet is 1/2", you need to remove the above two fittings before connection. **(Figure 2)**

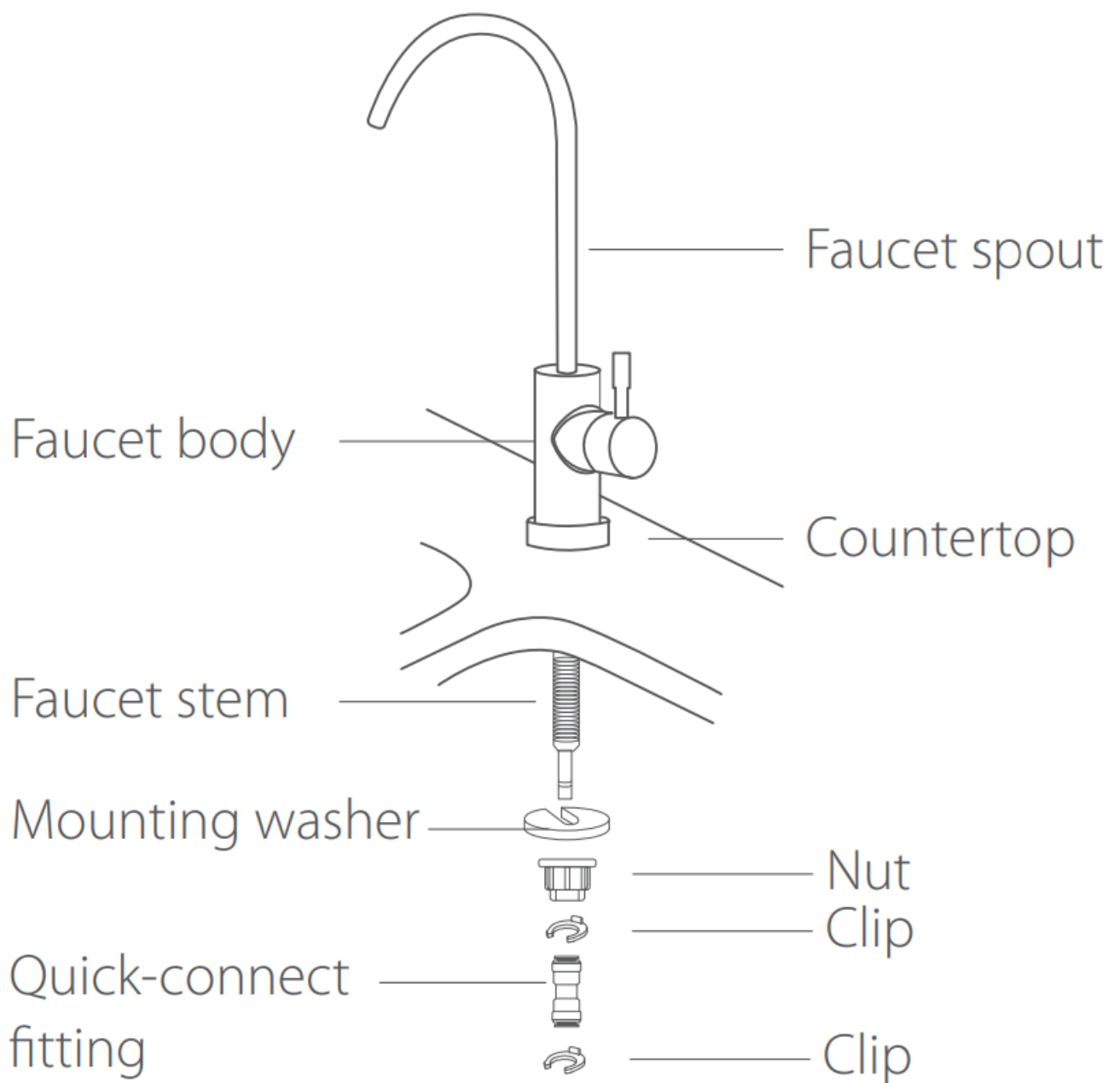
Figure 2



Step 3: Install the faucet

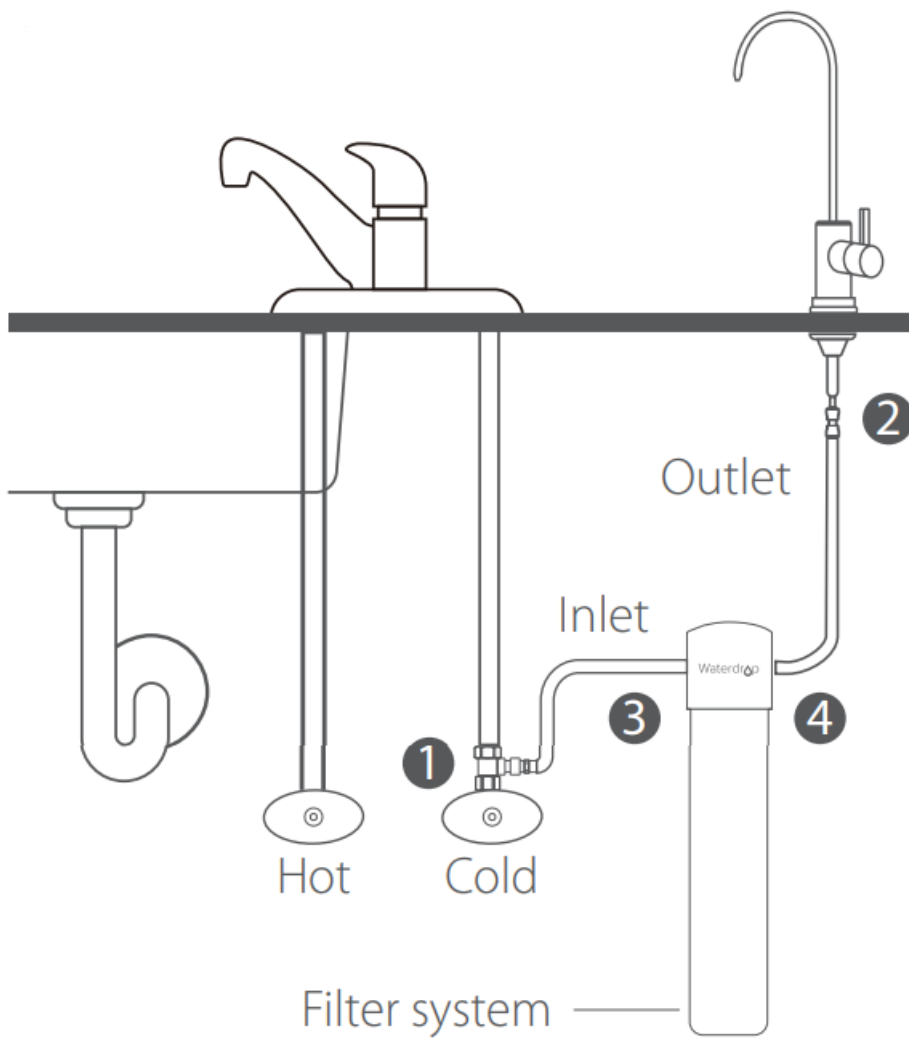
Note: If there is no hole in your kitchen sink or countertop, you have to drill one (1") or use the hole for the soap dispenser.

1. Insert the faucet spout into the faucet body.
2. Insert the faucet stem into the hole on the countertop. Under the sink, slip on other parts in the order shown in the picture.
3. Firmly insert the quick-connect fitting onto the faucet stem.
4. Connect one end of the tubing to the quick-connect fitting of the faucet, then lock the clip. If you want to pull out the tubing, remove the clip first.
5. Connect the other end to the outlet of the filter head.
6. Push the tubing into the fitting until you reach the mark on the tubing



Step 4: Check the leaks and flush the filter

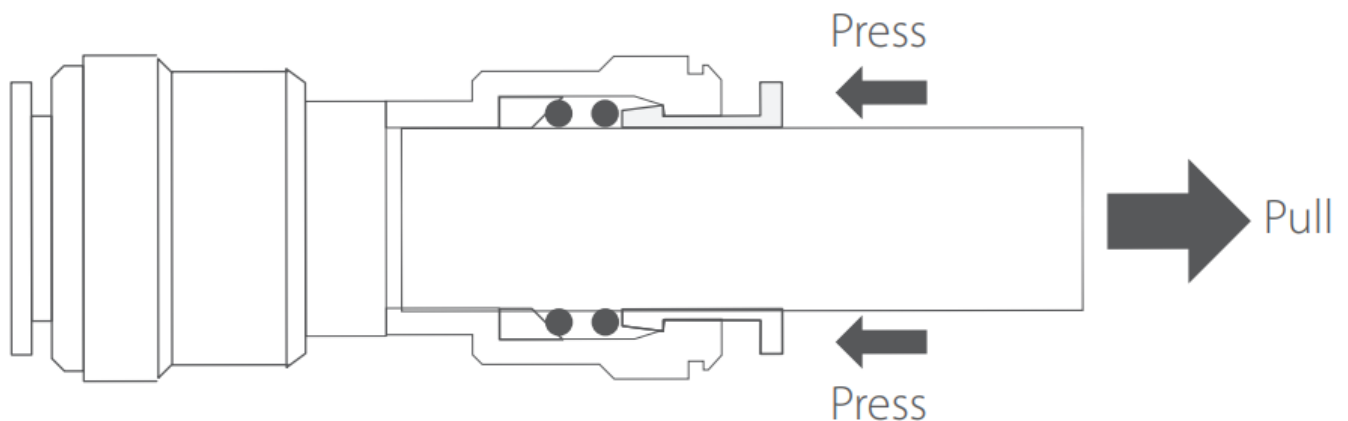
1. In the event of water leakage, turn off the water supply. If the water leakage is occurring at position 1, wrap Teflon tape on the external thread. If the water leakage is occurring at position 2, 3 or 4, check whether the tubing is fully inserted into the fittings. If not, insert it again until you reach the mark on the tubing.
2. Flush the filter for 5 minutes before use.



To disconnect

Use your thumb and index finger to press down on the lock sleeve. Use your other hand to pull out the hose from the fitting.

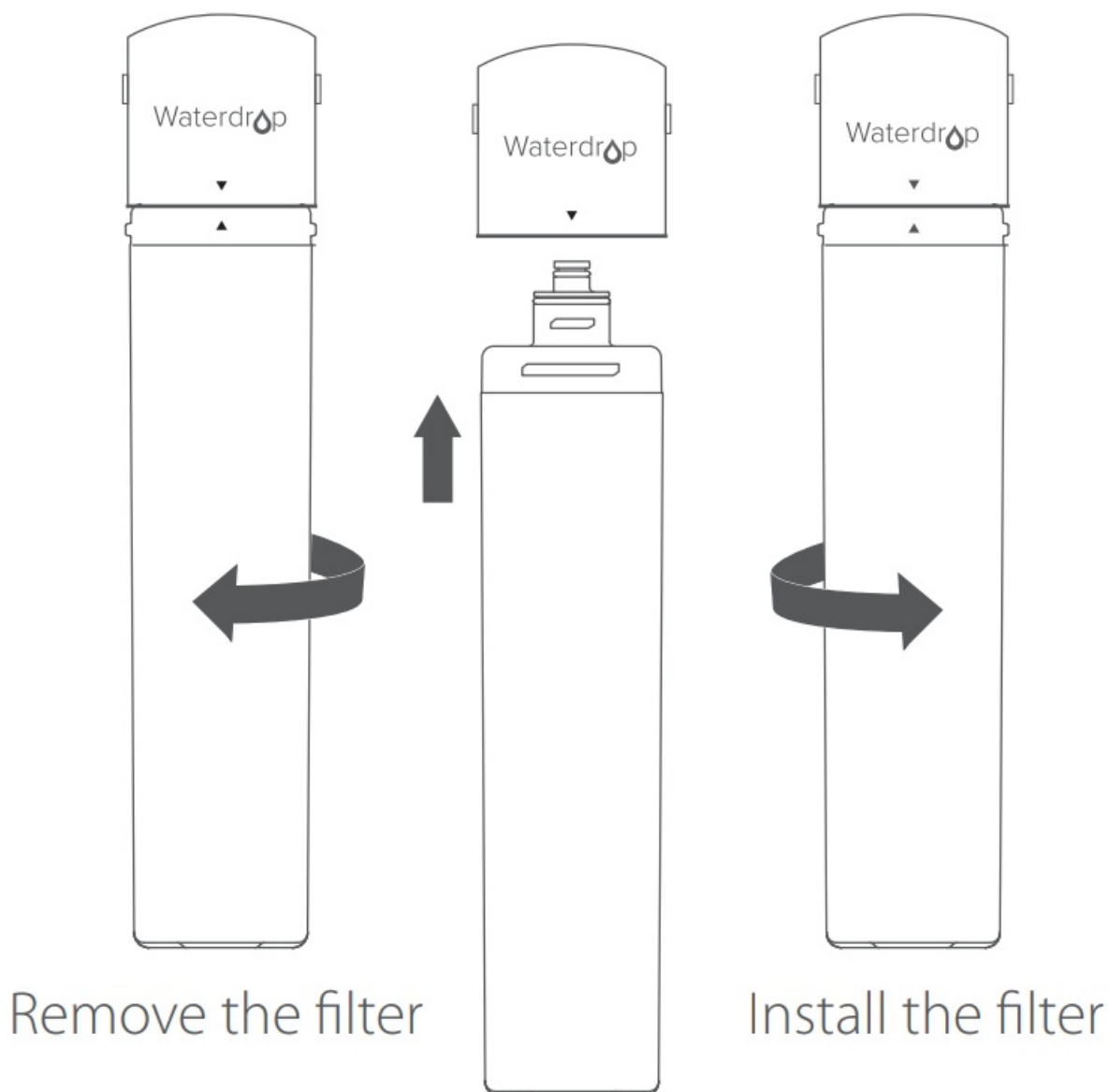
Note: Please do not pull out the tubing directly, or else it will damage the fitting and cause leakage.



Filter replacement

1. It's recommended to turn off the water supply and turn on the faucet to release the water pressure.
2. Rotate 1/4 turn to the left to remove the filter.
3. Take out the new filter and remove the protective cap.

4. Rotate 1/4 turn to the right to install the filter. Ensure that the filter's triangle mark is aligned with the connection mark.
5. Turn on the cold water valve and flush for 5 minutes.



Frequently asked questions

Q: What should I do if water leaks after installation?

A: In the event of water leakage, turn off the water supply. If the water leakage is occurring at the thread, wrap Teflon tape on the external thread. If the water leakage is occurring at the quick connection position, insert the quick-connect fitting to the end and make sure the hoses hit the bottom of the fitting. Contact us for solutions if the water leakage persists.

Q: Why doesn't the TDS value lower after filtration?

A: The main purpose of this waterdrop filter is not to remove TDS. TDS stands for total dissolved solids, and it is basically composed of inorganic salts and a small amount of organic matter. The filter can remove harmful substances while keeping beneficial trace elements. Please choose Waterdrop RO system if you are looking for physical removal of TDS.

A: The filter's service life is related to water quality. If the flow rate is significantly reduced or if the water has a peculiar smell, we suggest that you replace the filter. The recommended service life of the filter is as follows: 1 year for WD-RF10, WD-RF10-UF, WD-RF10-MZ and WD-RF10-AK, 2 years for WD-RF15, WD-RF15-UF, WD-RF15-MZ and WD-RF15-AK, 3 years for WD-RF17, WD-RF17-UF, WD-RF17-MZ and WD RF17-AK.

Q: Why does black water come out during flushing?

A: It's normal that black water comes out when flushing. The purpose is to remove carbon powder remaining on the surface of filter materials. You can normally use it after flushing for 5 minutes.

1 -year quality assurance

All mechanical devices with moving parts have a normal life span and will need to be replaced periodically. For this reason, mechanical devices such as water fittings, filter head, and faucets have a limited replacement assurance of 1 year. No assurance is given as to the service life of any filter cartridge, as the service life will vary based on local water conditions and water consumption.

If the product proves to be defective within 1 year from the date of purchase, please contact our customer service department. During the assurance period, we will replace or repair any part that is deemed to be defective if the product has not been subjected to tampering, alteration, or improper use after delivery, and has not been repaired by the manufacturer.

We do not make any promises in the event of misuse, use in abnormal temperature conditions, conditions outside those listed in the operating parameters, or use in commercial operations.


Manufacturer Technical Support



Tel: 1-888-352-3558 (U.S.)

E-mail: service@waterdropfilter.com

Waterdrop

	Waterdrop WaterWD-UB system Direct Connect Undersink Water Filtration System [pdf] Instructions Manual WaterWD-UB system, WaterWD-UB system Direct Connect Undersink Water Filtration System, Direct Connect Undersink Water Filtration System, Undersink Water Filtration System, Water Filtration System, Filtration System, System
---	--

References

- [User Manual](#)