



WASSERSTEIN V19 BKDB Chime Blink Doorbell Chime User Manual

[Home](#) » [WASSERSTEIN](#) » WASSERSTEIN V19 BKDB Chime Blink Doorbell Chime User Manual 



WASSERSTEIN
Thoughtful Products for your Smart Home

**Wireless Chime
USER MANUAL**



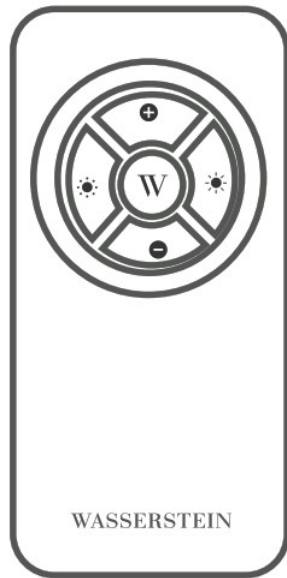
Contents

- [1 Overview](#)
- [2 In the Box](#)
- [3 Safety](#)
- [4 Functions](#)
- [5 Installing the Wireless Chime](#)
- [6 Installing the Doorbell Transmitter](#)
- [7 Understand the Transmitter Wiring](#)
- [8 Connecting your Blink Doorbell](#)
- [9 Blink Doorbell Wiring Diagram \(AC Adapter\)](#)
- [10 Blink Doorbell Setup](#)
- [11 Connecting your Home Doorbell](#)
- [12 Setup and Operation](#)
- [13 Power Safety Information](#)
- [14 Battery Warning](#)
- [15 FCC Caution](#)
- [16 RF Warning for Mobile Device](#)
- [17 Specifications](#)
- [18 Get More Support](#)
- [19 Documents / Resources](#)
 - [19.1 References](#)
- [20 Related Posts](#)

Overview

The Wasserstein Wireless Chime gives you a custom wireless alert system that's also compatible with your Blink Video Doorbell, and features seven pre-loaded ringtones and four LED colors to choose from.

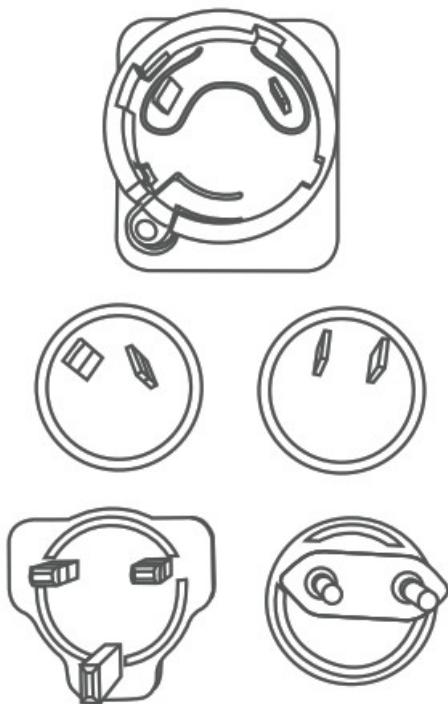
In the Box



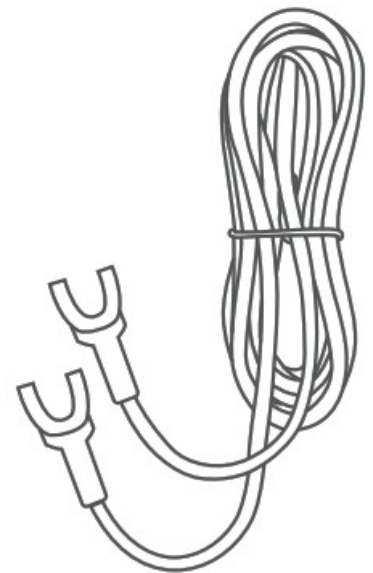
1 x wireless chime



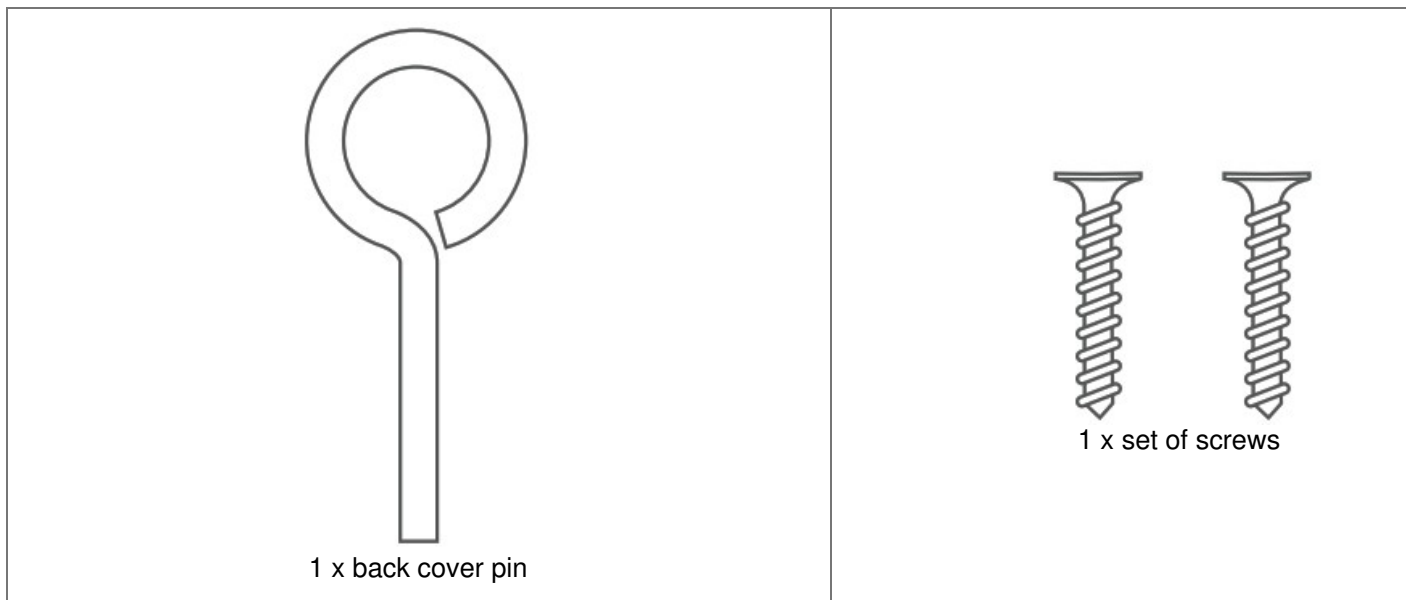
1 x wired transmitter



1 x USB power adapter
with 4 universal plugs



1 x cable
(3.3 ft; pre-installed)

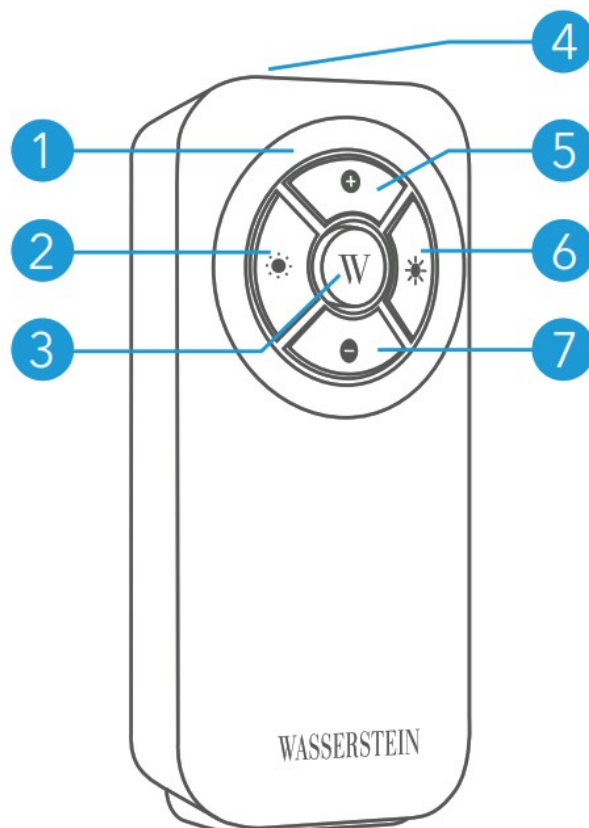


Safety

Read carefully before installing:

- Always wear suitable protective gear (e.g. safety goggles) when drilling holes and doing similar fitting work.
- Before drilling holes in walls, check for electricity cables and water pipes.
- Shut off the power to the doorbell transformer before you attempt to connect or remove it. Locate and shut off the circuit breaker switch in your home's main power supply.
- Before touching any wires, use a voltage sensor to check that the power is actually off – the sensor will alert you if the wires are still live.

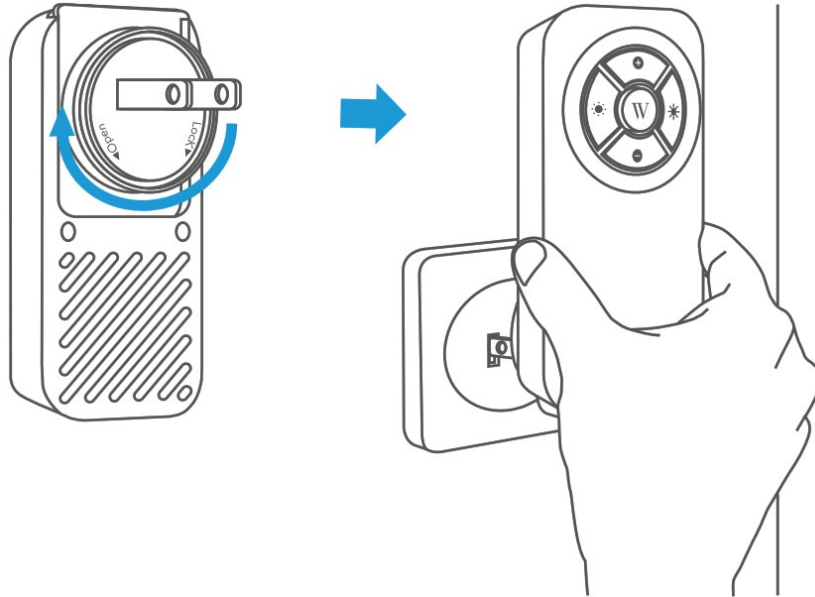
Functions



- | | |
|---|---|
| <ol style="list-style-type: none">1. halo LED / notification2. LED dimmer3. ringtone selector4. ambient light sensor | <ol style="list-style-type: none">5. volume up6. LED brighter7. volume down |
|---|---|

Installing the Wireless Chime

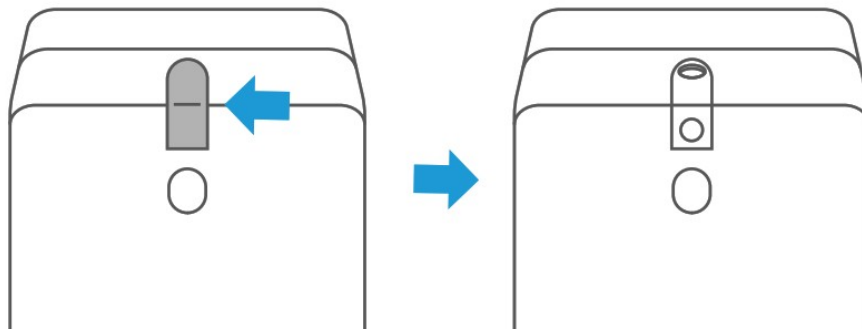
Rotate the plug clockwise until you feel or hear the click to lock the plug in place. Plug the chime into an AC outlet.



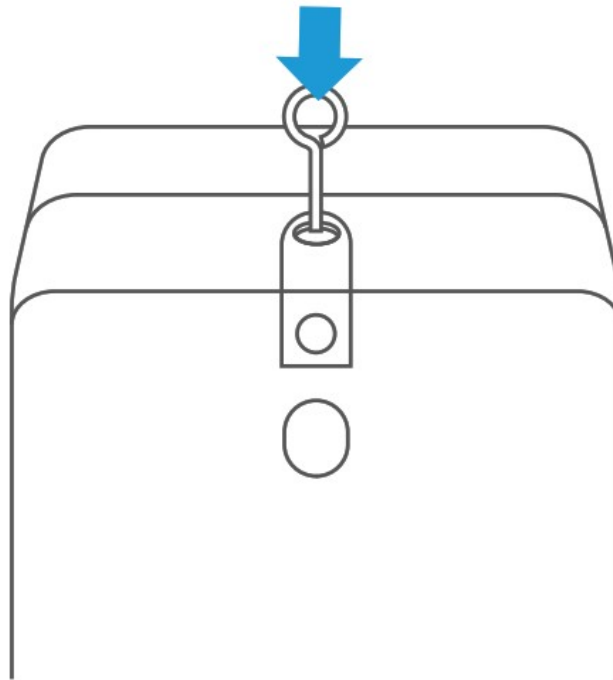
Installing the Doorbell Transmitter

Choose a location protected from high heat or water (like rain or snow), and that won't be hit when opening the door.

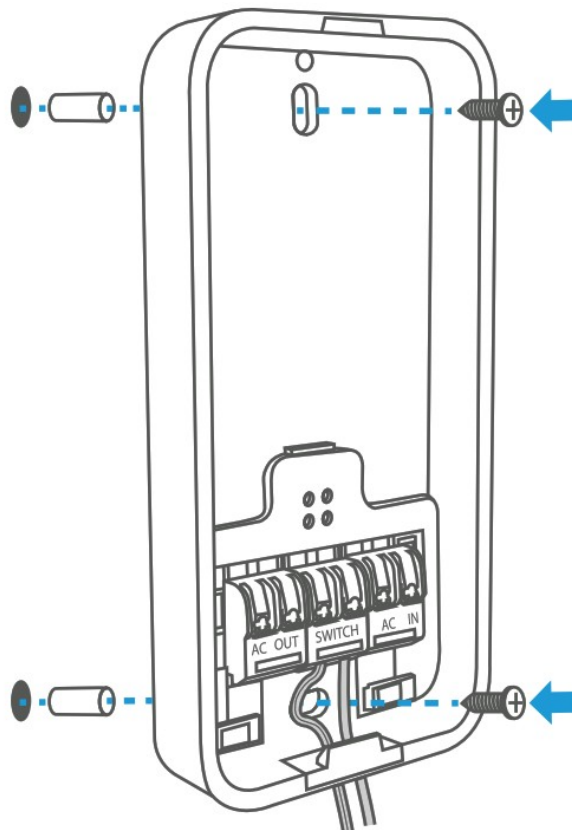
1. Remove the silicone stopper on the top of the transmitter.



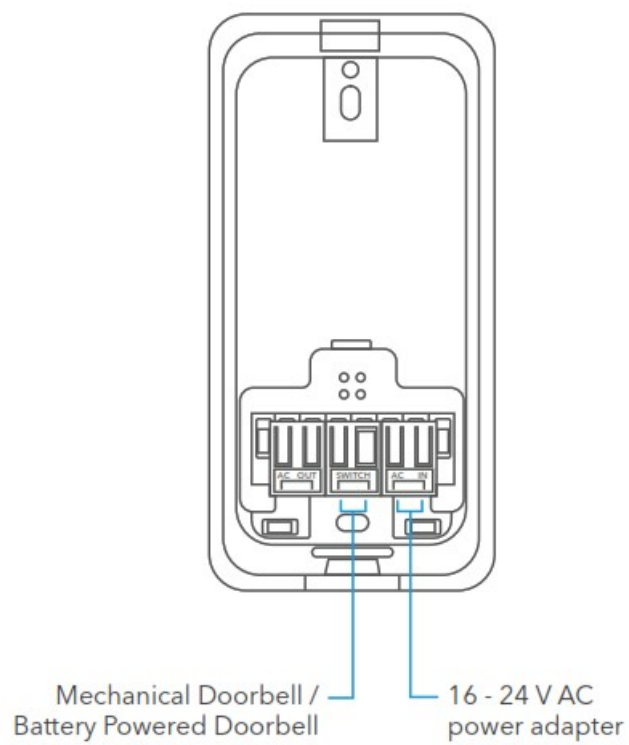
2. Use a pin to depress the notch and remove the back cover.



3. Screw the transmitter back cover into the wall with the provided screws.

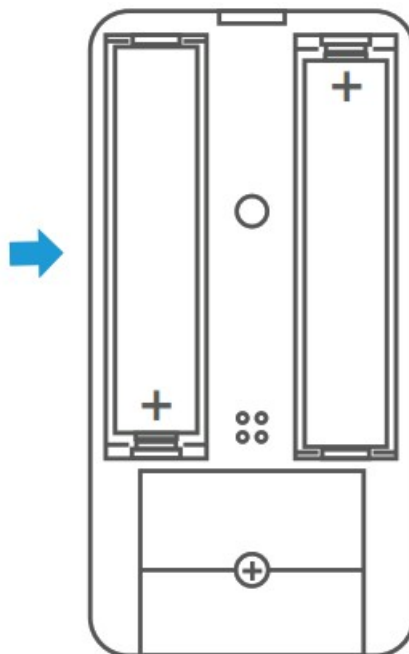


Understand the Transmitter Wiring

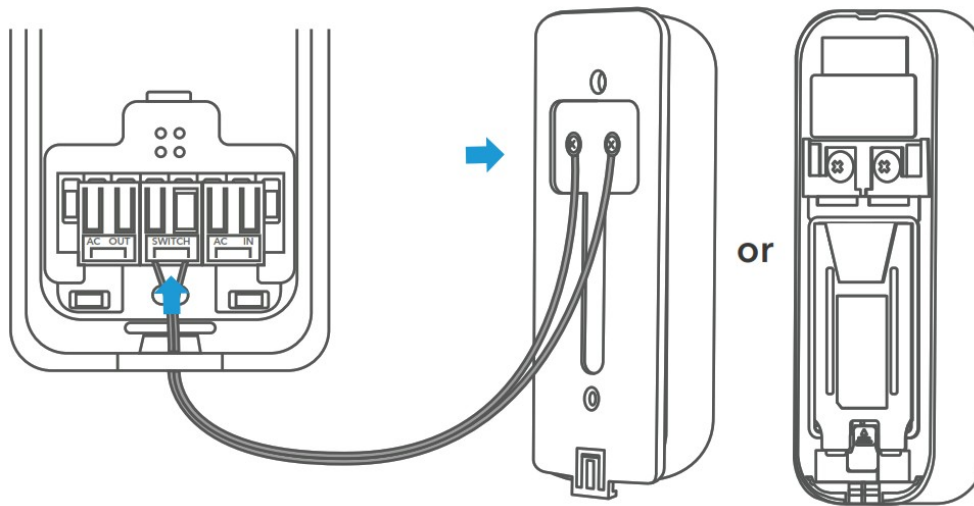


Connecting your Blink Doorbell

1. Insert 2x AAA batteries.



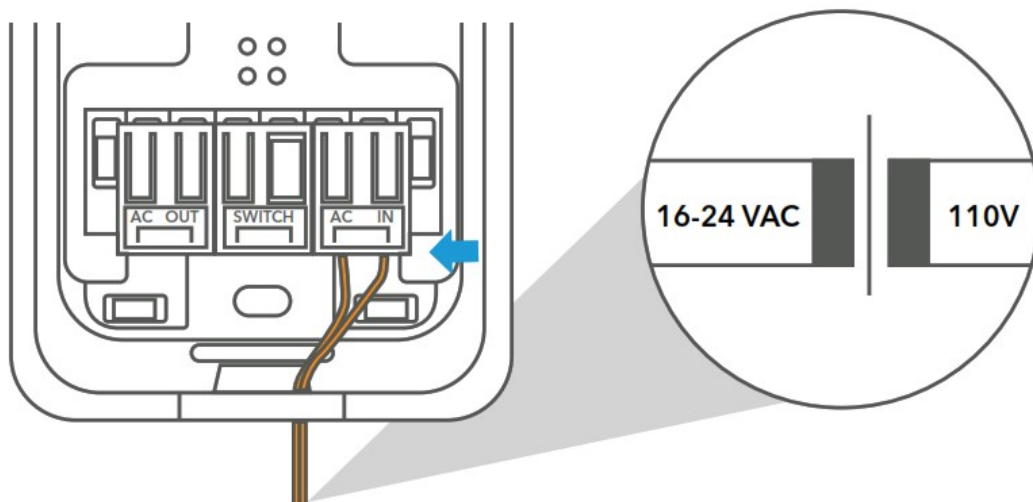
2. Connect wires from the Switch terminal to the screws at the back of the Blink Doorbell.



3. Follow the instructions on the Blink Doorbell to set up the chime type (see page 8).

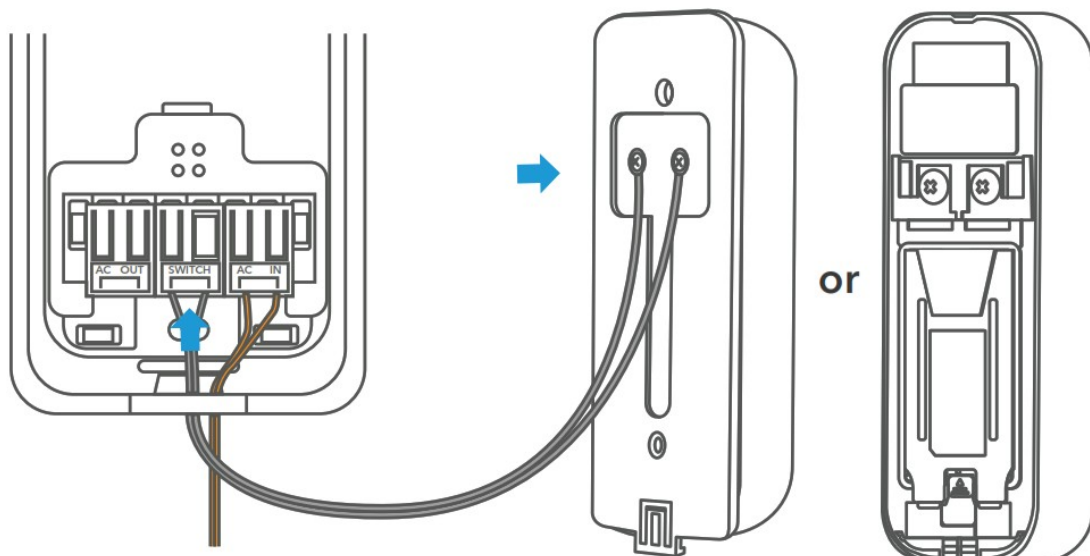
Blink Doorbell Wiring Diagram (AC Adapter)

1. Connect the power adapter wire to the AC-IN terminal. Press on the notch to insert the wire and make sure it is tightly fitted.



Note: A 16-24 V AC (10 V A min.) power adapter must be used.

2. Connect wires from the Switch terminal to the back screws of the Blink Doorbell. Press on the notch to insert the wire and make sure it is tightly clamped.

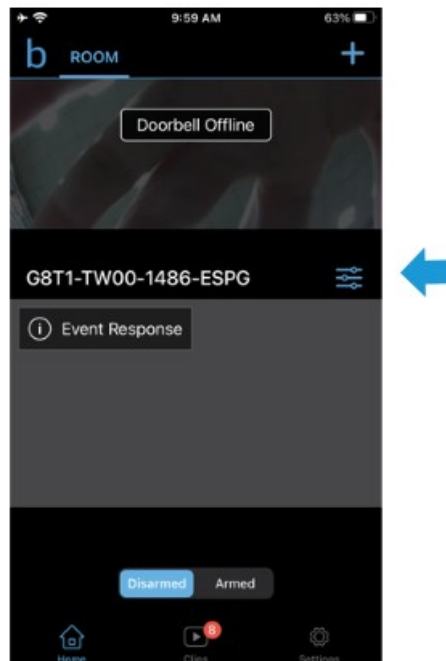


3. Follow the instructions on the Blink Doorbell to set up the chime type (see page 8).

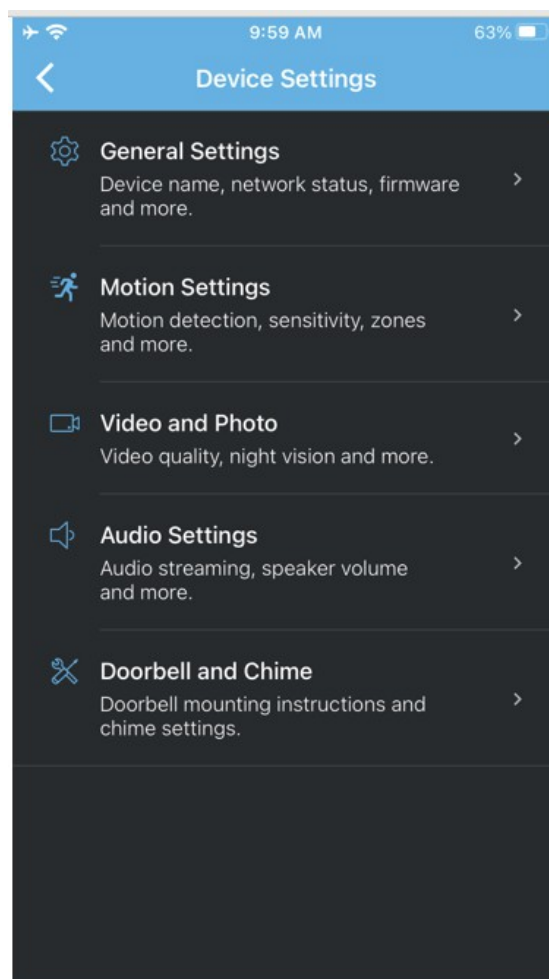
Note: You may need to cut and strip the wires from your power adapter to fit in the “AC IN” socket.

Blink Doorbell Setup

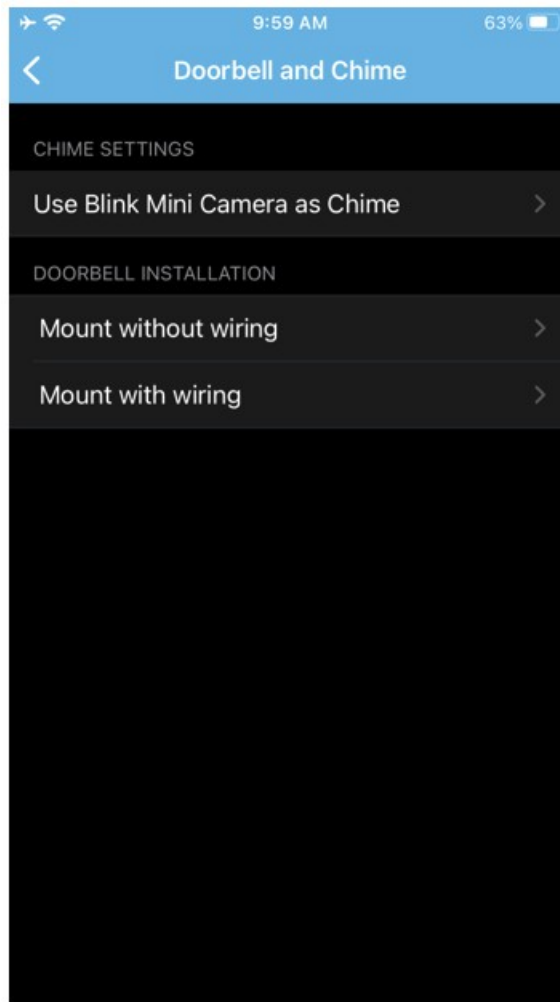
1. Make sure the Blink Doorbell is connected to the Internet.
2. Go to doorbell settings.



3. Go to “Doorbell and Chime”.

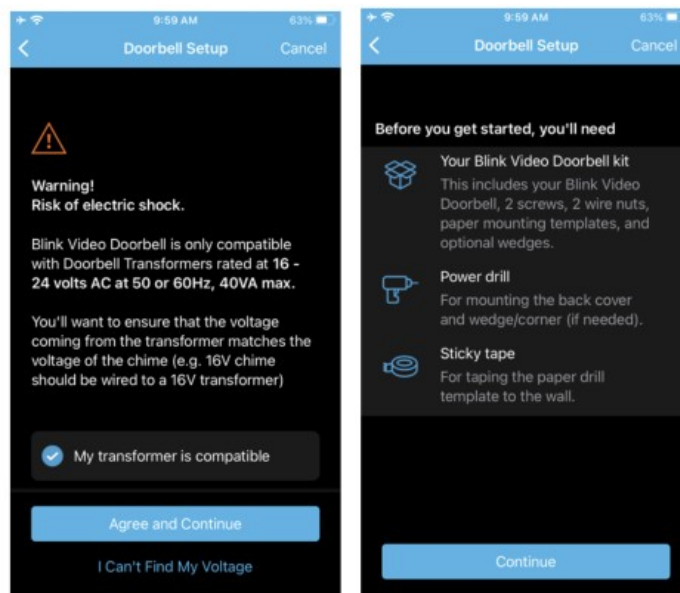


4. Click “Mount with wiring”.

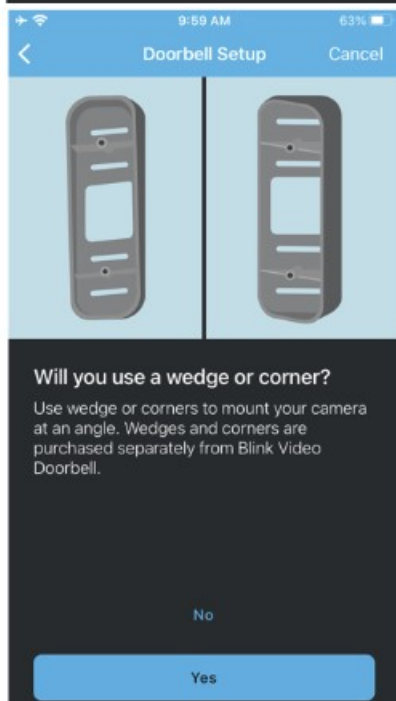
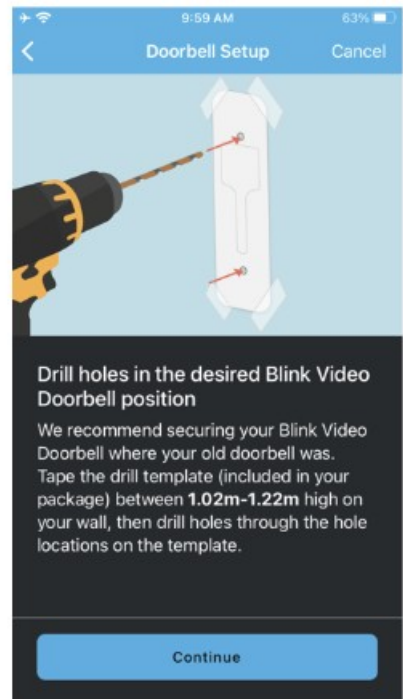
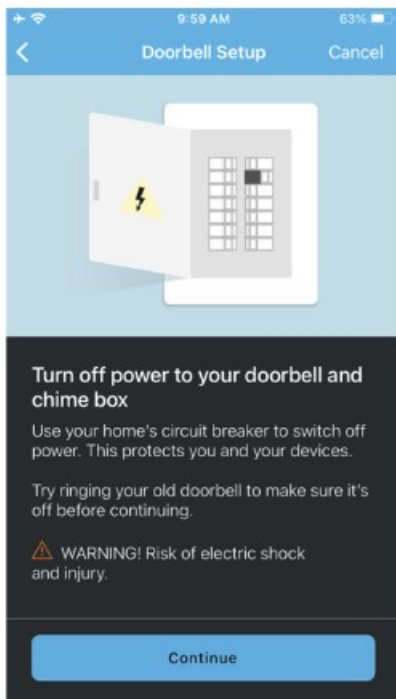


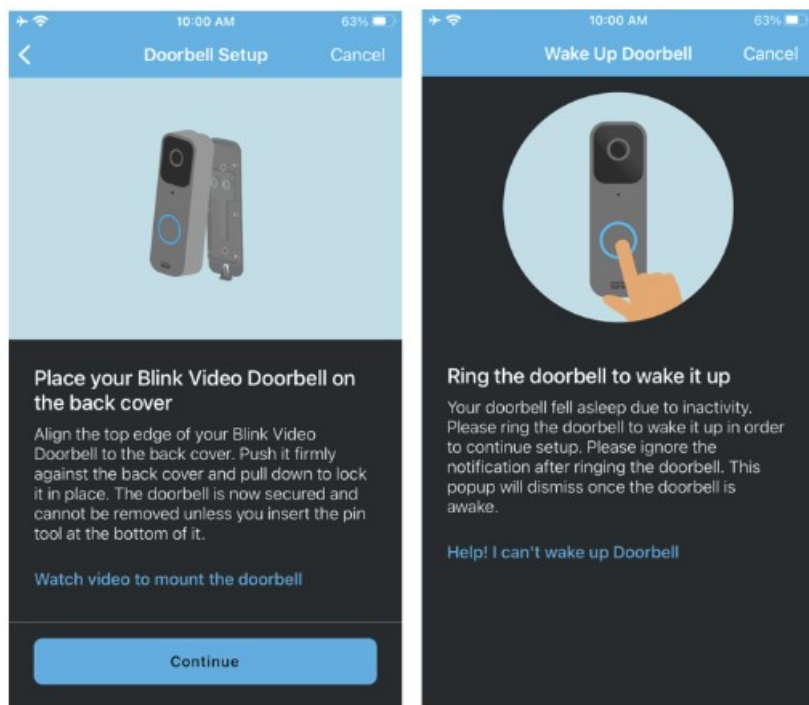
5. Click Continue to proceed.

Check “My transformer is compatible”. Click “Agree to Continue”.

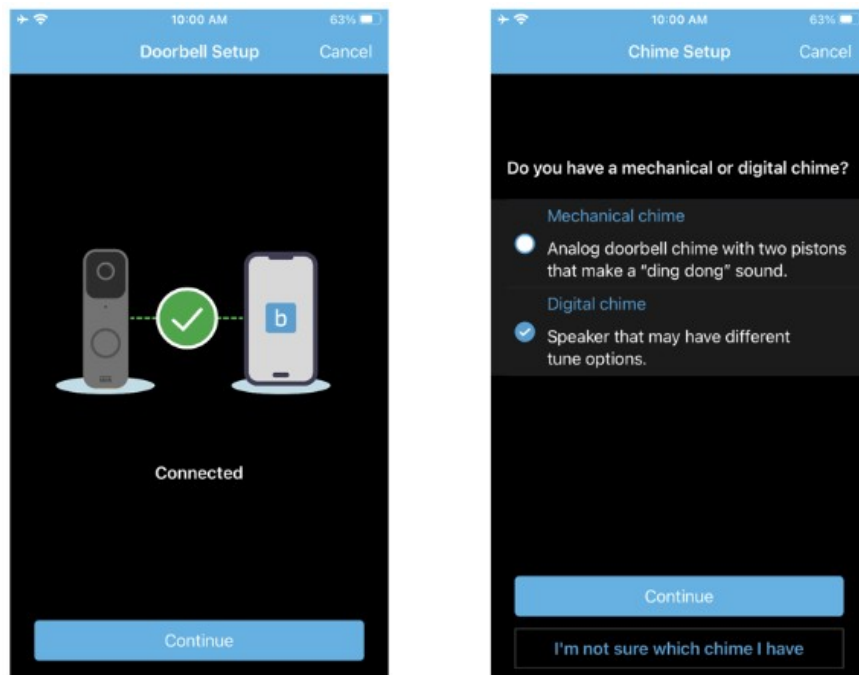


6. Follow instruction for “Doorbell Setup” and click “Continue” to proceed.

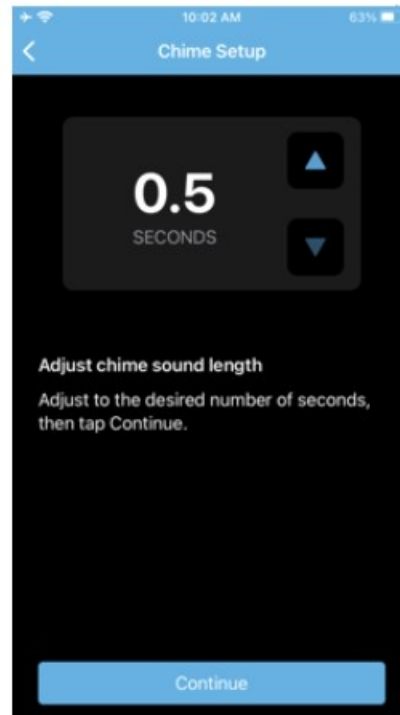
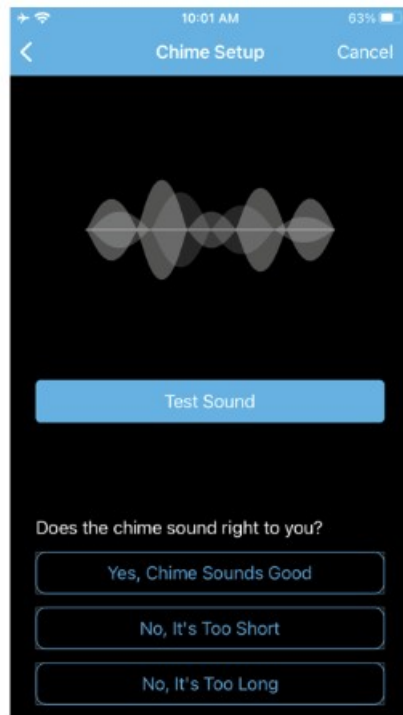




7. After the Blink Doorbell is set up, you can setup the chime. Make sure to check the "Digital chime" and then "Continue".

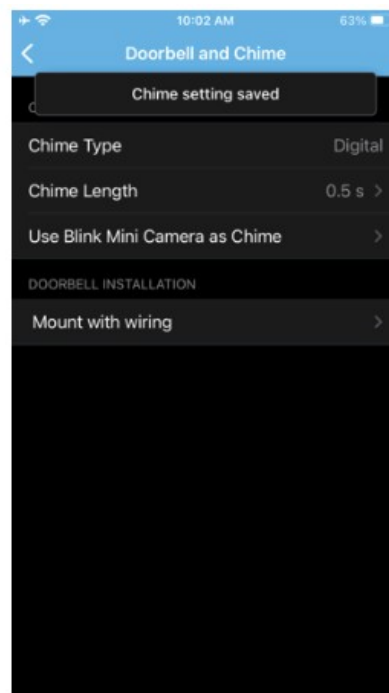
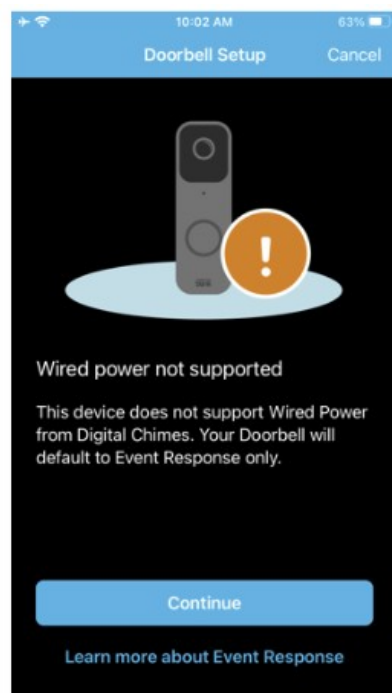


8. Set the receiver to Pairing mode by pressing and holding both brightness adjustment buttons for 3 seconds until the LED is blinking. Click "Test Sound" on the APP. If it works, click "Yes, ChimeSounds Good" to proceed.



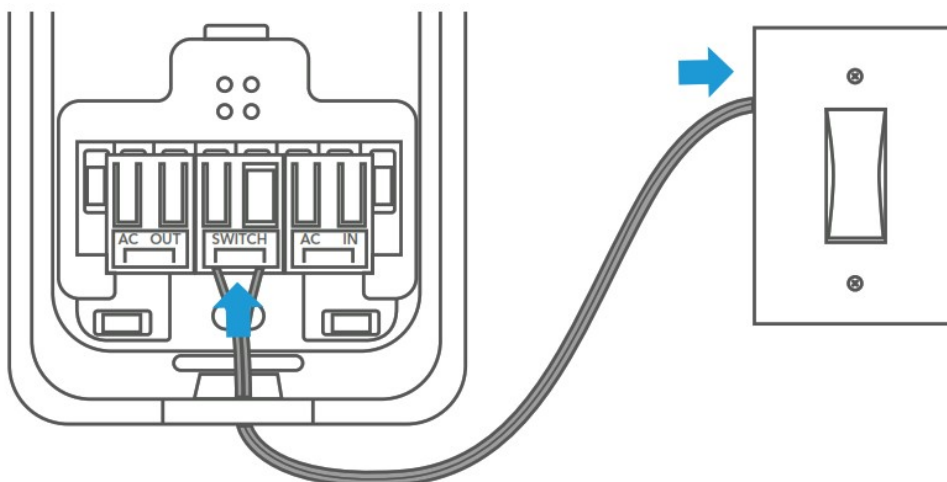
Note: The default response time is 1.5 seconds, if you want a shorter response time, you can click “No, It’s Too Long” to adjust.

9. Click “Continue” and your settings will be saved.

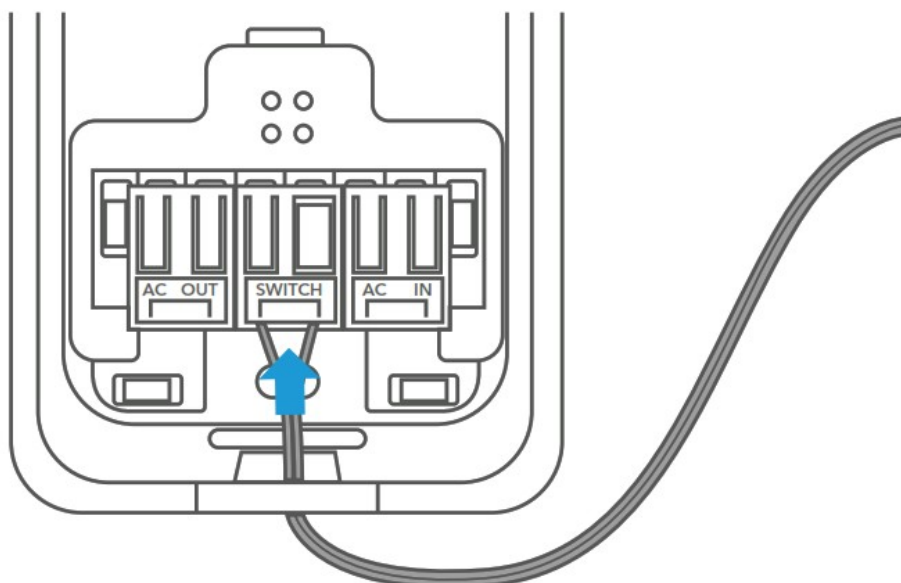


Connecting your Home Doorbell

1. This is to connect a wired doorbell to the wireless chime.
2. Your outside doorbell button must be wired into the Doorbell Transmitter, in the middle SWITCH socket.



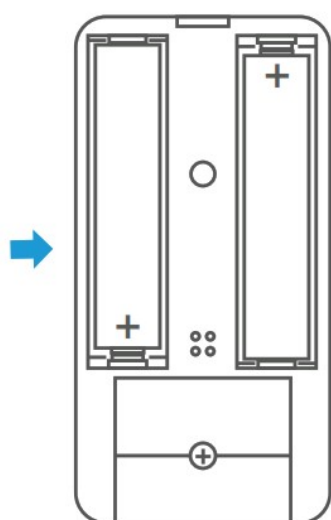
3. Press on the notch to insert the wire and make sure it is tightly clamped.



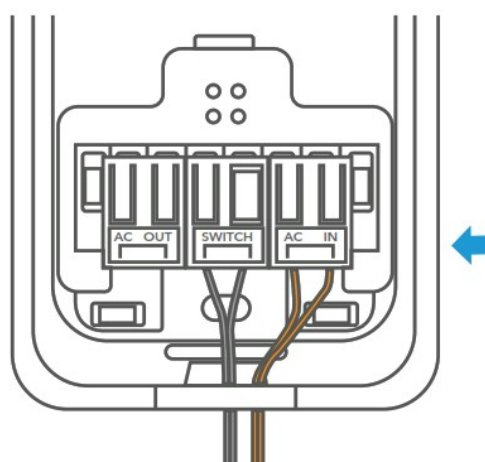
4. You have two options for powering the Doorbell Transmitter. Batteries or home power.

Option 1: 2 x AAA batteries

Option 2: 16-24 V AC
A power adapter (10 V AC min.)
must be used



or



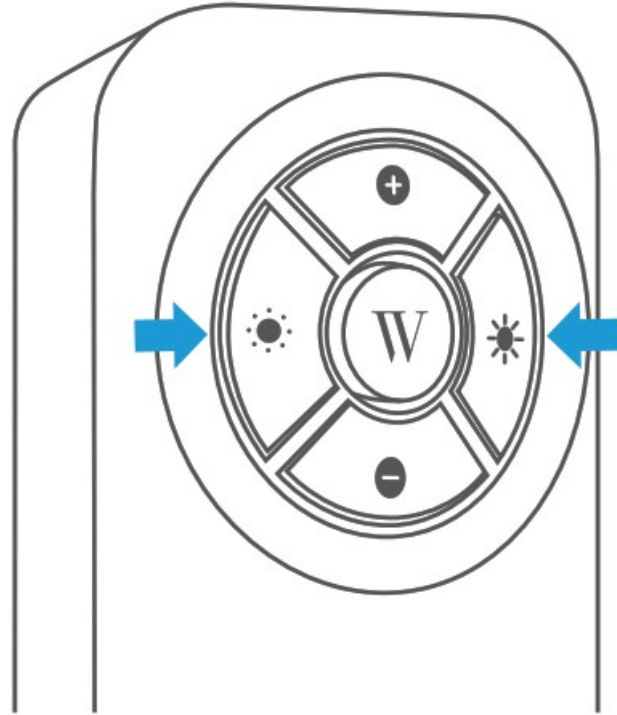
connect to the "AC IN" terminal

Note: You may need to cut and strip the wires from your power adapter to fit in the "AC IN" socket.

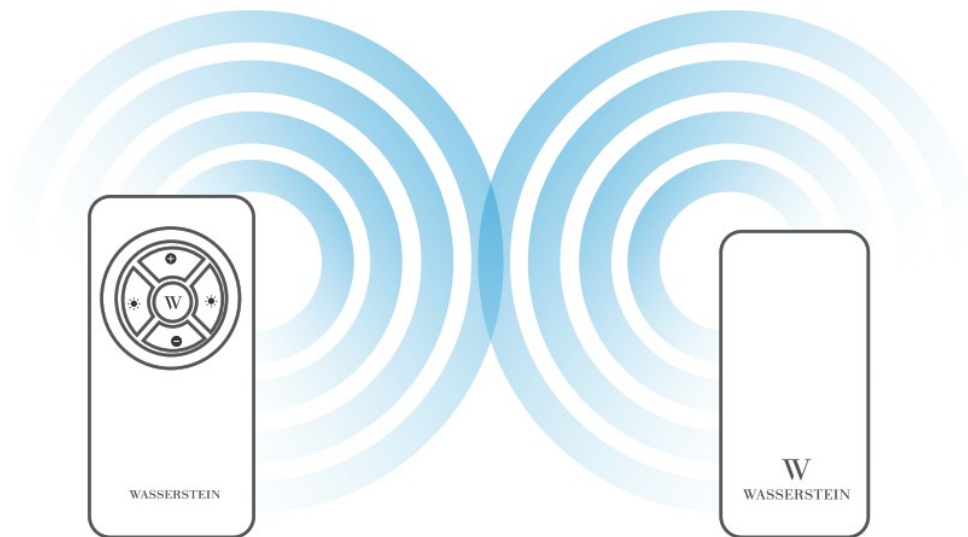
Setup and Operation

Transmitter and Receiver Pairing

1. Press and hold both brightness-adjustment buttons for 3 seconds until the LED is blinking.

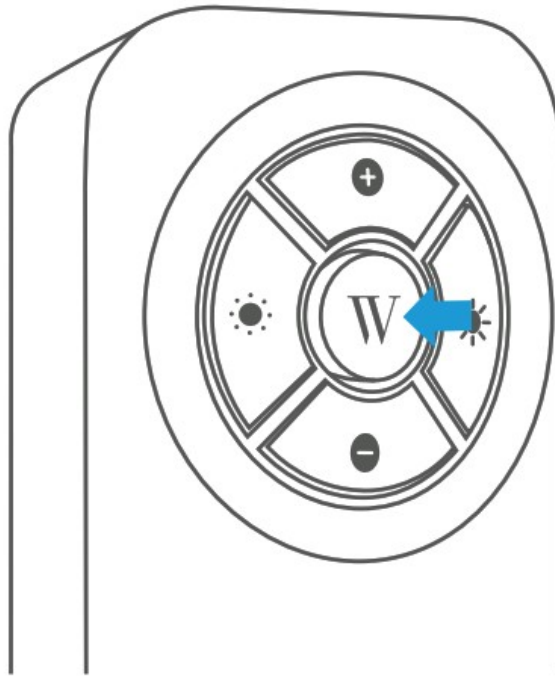


2. Press the doorbell button/smart doorbell.
3. The Wireless Chime will be paired with the Wireless Transmitter.



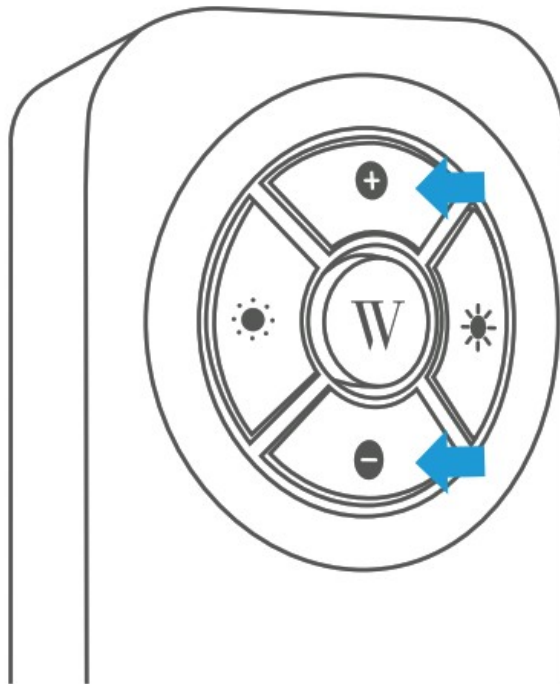
Changing the Tune

Press the center button (Wasserstein logo) to change the doorbell ringtone (you have 7 to choose from).



Adjusting the Volume

- Press the +/- button to adjust the volume level you want.



- Every time you press the +/- button, the volume will change. Stop pressing the button when the volume level is suitable for you.
- To mute the chime, press the – button until you cannot hear the ringtone.

Changing the Halo LED Color

Press and hold the center button (Wasserstein logo) and volume down buttons to change the halo LED color.

Color options:

blue

white

pink

cyan

Change the Halo LED Brightness Adjustment

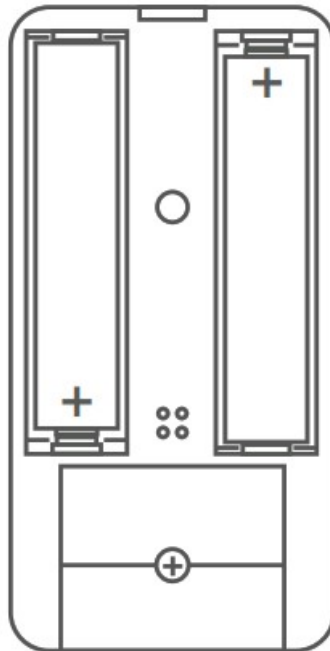
- The LED ring will automatically turn on when the ambient light goes down.
- Press the +/- button to adjust the brightness to your preferred level.
- To turn off the halo LED, press the – button until the halo LED is off.

Additional Chime(s)

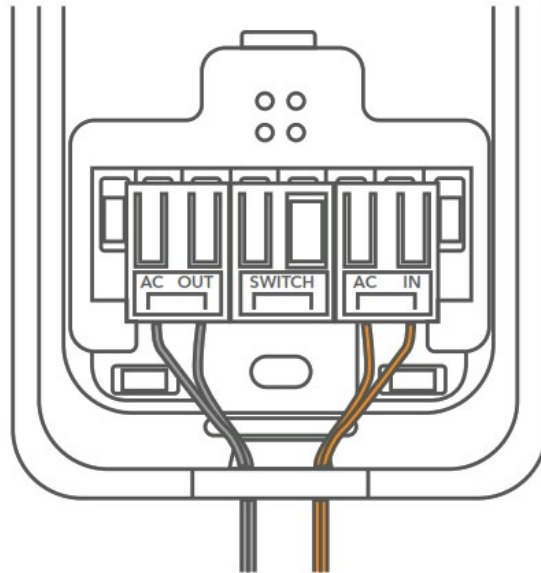
- You can connect up to 5 wireless chimes with a single transmitter. Simply plug in the additional wireless chime to a wall plug and follow the pairing instructions.
- Each chime can be set with its own ringtone and LED color.

Power Safety Information

1. 2 x AAA batteries (not applicable)



2. 6-24 V AC power adapter connected to AC IN terminal.



Battery Warning

CAUTION: Risk of fire or explosion if the battery is replaced with an incorrect type.

WARNING:

- Replacement of a battery with an incorrect type may cause an error or damage to the device.
- Disposal of a battery into a fire or a hot oven, or mechanically crushing or cutting, may result in an explosion.
- Leaving a battery in a high-temperature environment, such as in sunshine, fire, or hot surface may result in an explosion or the leakage of flammable liquid or gas.
- A battery subjected to extremely low air pressure may result in an explosion or the leakage of flammable liquid or gas.

FCC Caution

This device complies with part 15 of the FCC Rules.

Operation is subject to the following two conditions:

1. This device may not cause harmful interference.
2. This device must accept any interference received, including interference that may cause undesired operation.

Any changes or modifications not expressly approved by the party responsible for compliance could void the user's authority to operate the equipment.

Note: This equipment has been tested and found to comply with the limits for a Class B digital device, pursuant to part 15 of the FCC Rules. These limits are designed to provide reasonable protection against harmful interference in a residential installation. This equipment generates, uses, and can radiate radio frequency energy and, if not installed and used in accordance with the instructions, may cause harmful interference to radio communications. However, there is no guarantee that interference will not occur in a particular installation. If this equipment does cause harmful interference to radio or television reception, which can be determined by turning the equipment off and on, the user is encouraged to try to correct the interference by one or more of the following measures:

1. Reorient or relocate the receiving antenna.
2. Increase the separation between the equipment and receiver.
3. Connect the equipment to an outlet on a circuit that is different from where the receiver is connected.

4. Consult your dealer or an experienced technician for help.

RF Warning for Mobile Device

This equipment complies with FCC radiation exposure limits set forth for an uncontrolled environment. This equipment should be installed and operated with a minimum distance of 7.87 inches between the device and your body.

IC Caution

RSS-Gen Issue 5 April 2018 & CNR-Gen 5e édition Avril 2018:

This device complies with Industry Canada licence-exempt RSS standard(s). Operation is subject to the following two conditions:


1. This device may not cause interference.
2. This device must accept any interference, including interference that may cause undesired operation of the device.

Specifications

Doorbell Transmitter

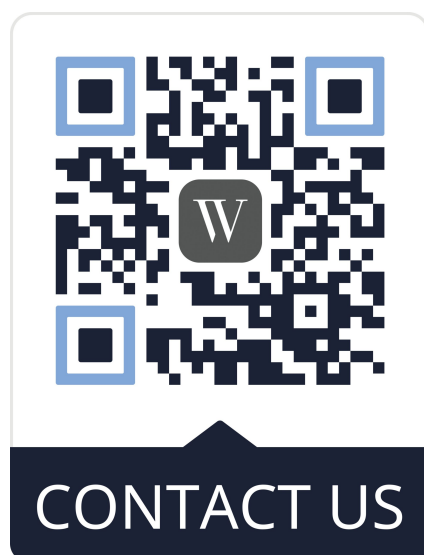
Dimension:	3.15 x 1.57 x 0.85 in
Weight:	1.5 oz
Material:	ABS plastic
Power:	2x AAA Batteries (not included) or 16 – 24 VAC, 10 VA min., 50/60 Hz NEC/CEC class 2 transformer
RF frequency:	433 MHz
Wireless range:	650 ft
Operating temperature:	-4 °F to 104 °F
Maximum wireless chimes:	5

Wireless Chime

Dimension:	5.08 x 2.36 x 1.39 in
Weight:	5.0 oz
Material:	ABS plastic
Power supply:	USB power adapter
Power input:	110-240 VAC 50-60 Hz
Power output:	5 V  1 A
RF frequency:	433 MHz
Wireless range:	650 ft
Operating temperature:	-4 °F to 104 °F
Chime ringtones:	7
Chime volume:	6 levels
Sound level:	mute to 110 dB
LED night-light brightness:	7 levels
LED colors:	white/blue/pink/cyan

Get More Support

For help or if you have questions, scan the QR code below, or email us at: contact@wasserstein-home.com



<https://qrco.de/bcMNXg>

Blink Video Doorbell is not included.

Blink Video Doorbell is a trademark of Immedia Semiconductor Inc.

Google Nest Doorbell (battery) is not included.

Google Nest Doorbell (battery) is a trademark of Google LLC.


Wasserstein is not affiliated with Immedia Semiconductor Inc.

Wasserstein is not affiliated with Google LLC.


Wasserstein is a trademark of Dropcases Ltd.

Made in China

Documents / Resources

<p>Wireless Chime USER MANUAL</p>  <p>W WASSERSTEIN Smart Home. Smart Living. â€™ Wasserstein Home</p>	<p>WASSERSTEIN V19 BKDB Chime Blink Doorbell Chime [pdf] User Manual V19 BKDB Chime Blink Doorbell Chime, V19, BKDB Chime Blink Doorbell Chime, Chime Blink Doorbell Chime, Blink Doorbell Chime, Doorbell Chime, Chime</p>
---	---

References

-  [Fairway Independent Mortgage Corporation](#)
- W [Smart Home. Smart Living. â€™ Wasserstein Home](#)
- [User Manual](#)