



WASSERSTEIN Gutter Mount Compatible with Nest Cam User Manual

[Home](#) » [WASSERSTEIN](#) » WASSERSTEIN Gutter Mount Compatible with Nest Cam User Manual 

Contents

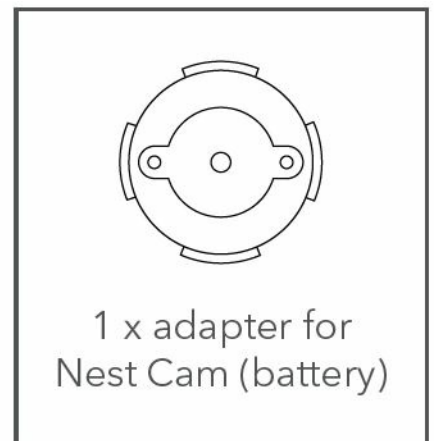
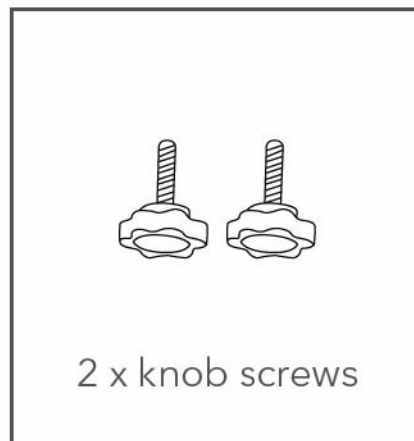
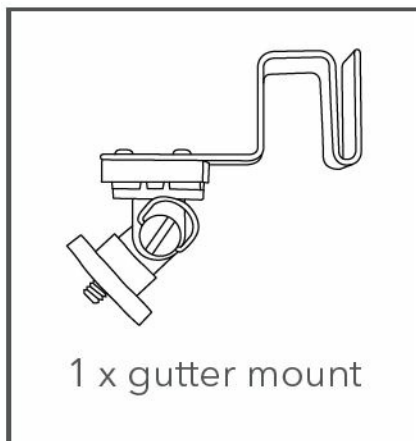
- [1 WASSERSTEIN Gutter Mount Compatible with Nest Cam](#)
- [2 In the Box](#)
- [3 Camera Compatibility](#)
- [4 Safety Information](#)
- [5 Installation](#)
- [6 Get More Support](#)
- [7 Documents / Resources](#)
 - [7.1 References](#)
- [8 Related Posts](#)



WASSERSTEIN Gutter Mount Compatible with Nest Cam



In the Box



Camera Compatibility

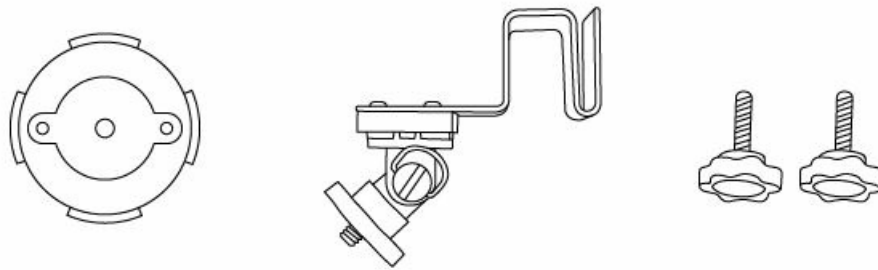
Designed exclusively for Google Nest Cam (battery) 2021.

Safety Information

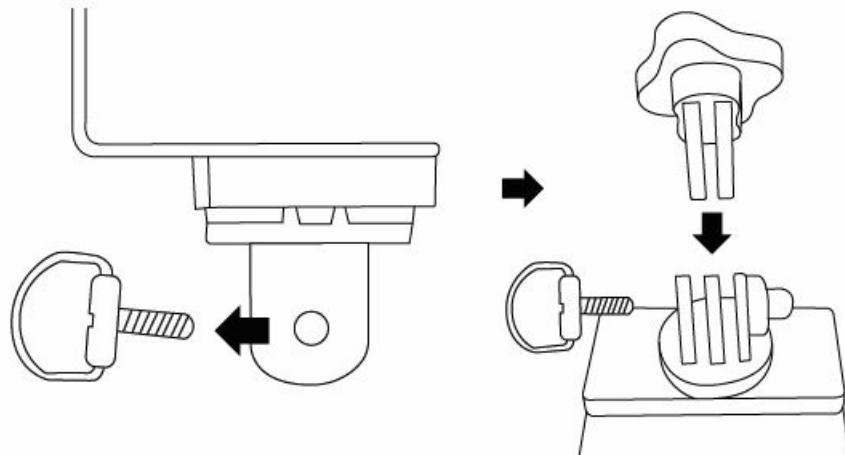
- Read these instructions carefully before use. Failure to follow the safety instructions could cause injury or damage to your property.
- Be aware of height-related hazards during the installation process. Make sure you have the necessary equipment and assistance with you.
- Make sure your gutter can support the weight of the camera and the gutter mount before installing it.
- Make sure your camera is weatherproof before installing it outdoors.
- Small parts contained in the kit could be a choking hazard. Keep small parts away from children.

Installation

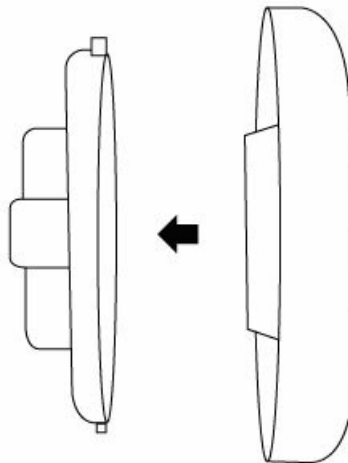
1. Make sure you have all of the included materials and tools



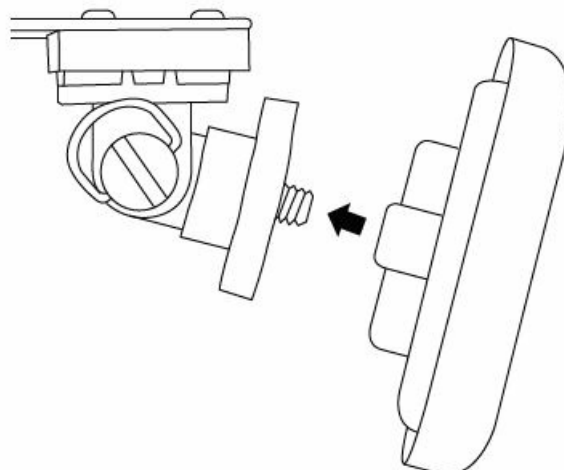
2. Attach the mounting piece by first taking out the screw at the base of the gutter mount and sliding the mounting piece in between the slots. Then, put the screw back in and tighten it firmly.



3. Attach the Nest Cam adapter to the bottom of the Nest Cam base by lining up the flanges and twisting until the adapter locks into place.

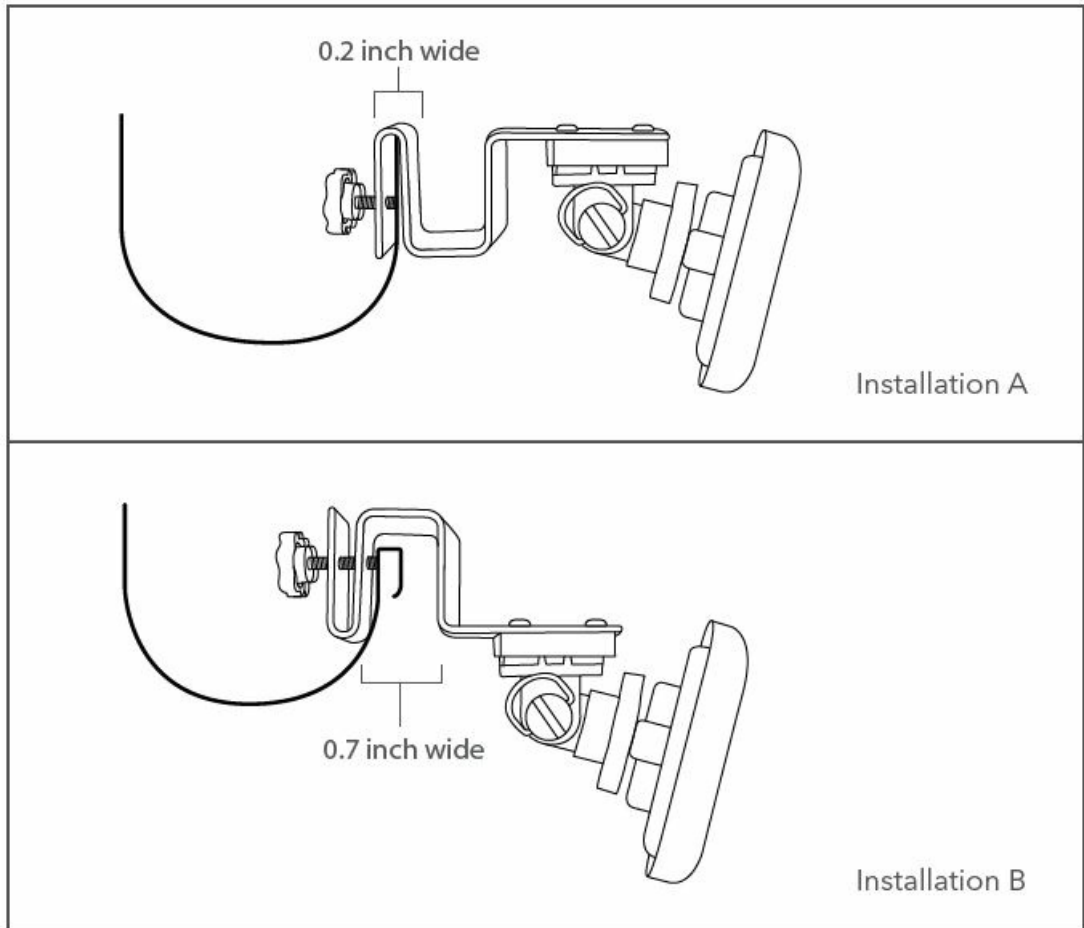


4. Then, attach the mounting screw to the back of the adapter (the Nest Cam base is magnetic, so the mounting screw will line up easily with the adapter hole). Twist the Nest Cam base clockwise until it's firmly in place.

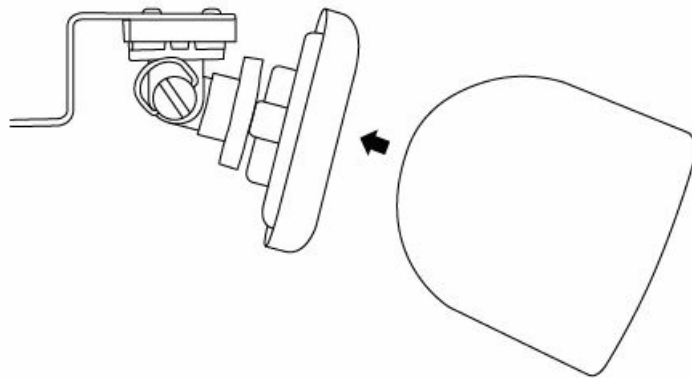


5. Hang the mount onto your gutter using the slot that best fits your gutter type. Secure it by placing the 2 knob

screws into the back and tightening firmly.



6. Snap the camera onto the magnetic Nest Cam base at your preferred angle and check the view on your mobile app.



Get More Support


Scan the QR code below or email us at contact@wasserstein-home.com.



- Google Nest Cam (battery) is not included.
- Google Nest is a brand of Google LLC.
- Wasserstein is a brand of Dropcases Ltd.
- Wasserstein is not affiliated with Google LLC.

For more information, please visit: www.wasserstein-home.com Made in China

Documents / Resources

	WASSERSTEIN Gutter Mount Compatible with Nest Cam [pdf] User Manual Gutter Mount Compatible with Nest Cam, Mount Compatible with Nest Cam, Compatible with Nest Cam, Nest Cam, Cam
---	---

References

-  [Fairway Independent Mortgage Corporation](#)