



WARING CB15T Ultra Heavy Duty Blender Instruction Manual

[Home](#) » [WARING](#) » **WARING CB15T Ultra Heavy Duty Blender Instruction Manual** 

Contents

- [1 WARING CB15T Ultra Heavy Duty Blender](#)
- [2 Product Information](#)
- [3 Product Usage Instructions](#)
- [4 Unit Information](#)
- [5 PART LIST](#)
- [6 ACCESSORIES](#)
- [7 ABOUT COMPANY](#)
- [8 Documents / Resources](#)
 - [8.1 References](#)
- [9 Related Posts](#)



WARING CB15T Ultra Heavy Duty Blender



Product Information

The product is an ultra-heavy-duty blender designed for commercial use. It is available in different models including CB15T, CB15TS, and CB15 with Hot Blending Lid. The blender features a slow start blending mechanism and a timer that can be adjusted from 10 seconds to 3 minutes. It comes with a 3-year limited motor warranty and is NSF certified. The blender also includes an electronic membrane keypad for easy operation.

Product Usage Instructions

1. Before using the blender, ensure that it is properly assembled and all parts are securely attached.
2. Connect the blender to a power source using the provided power cord.
3. To turn on the blender, press the POWER ON/OFF button.
4. To start blending, select the desired blending speed using the LLOW, MED, or HIGH buttons.
5. If pulsing is required, press the PULSE button.
6. To stop blending, press the STOP button.
7. For hot blending, attach the optional Hot Blending Lid (CBL10) to the blender.
8. Ensure that the blending container is securely placed on the base unit before operating the blender.
9. To adjust the blending time, use the timer adjustment buttons on the electronic membrane keypad.
10. After each blending cycle, allow the blender to rest for 1 minute before starting another cycle.

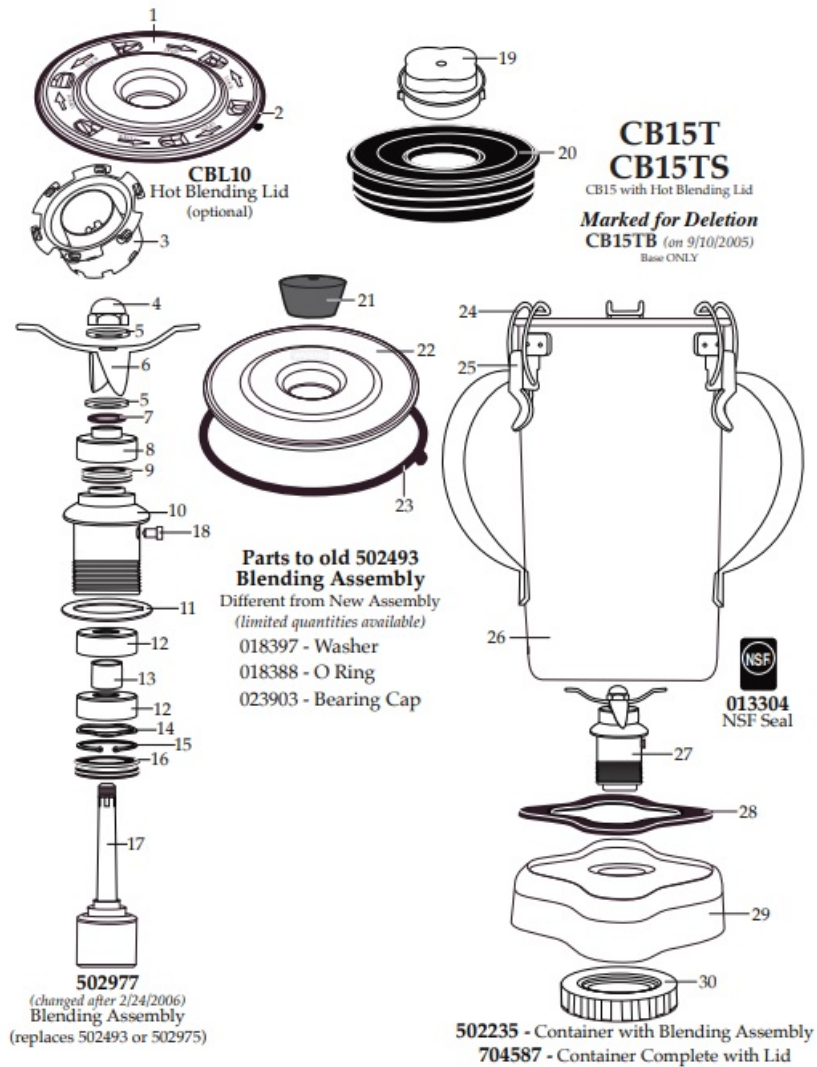
Note: For detailed instructions on assembling and disassembling specific parts of the blender, refer to the user manual provided with the product.

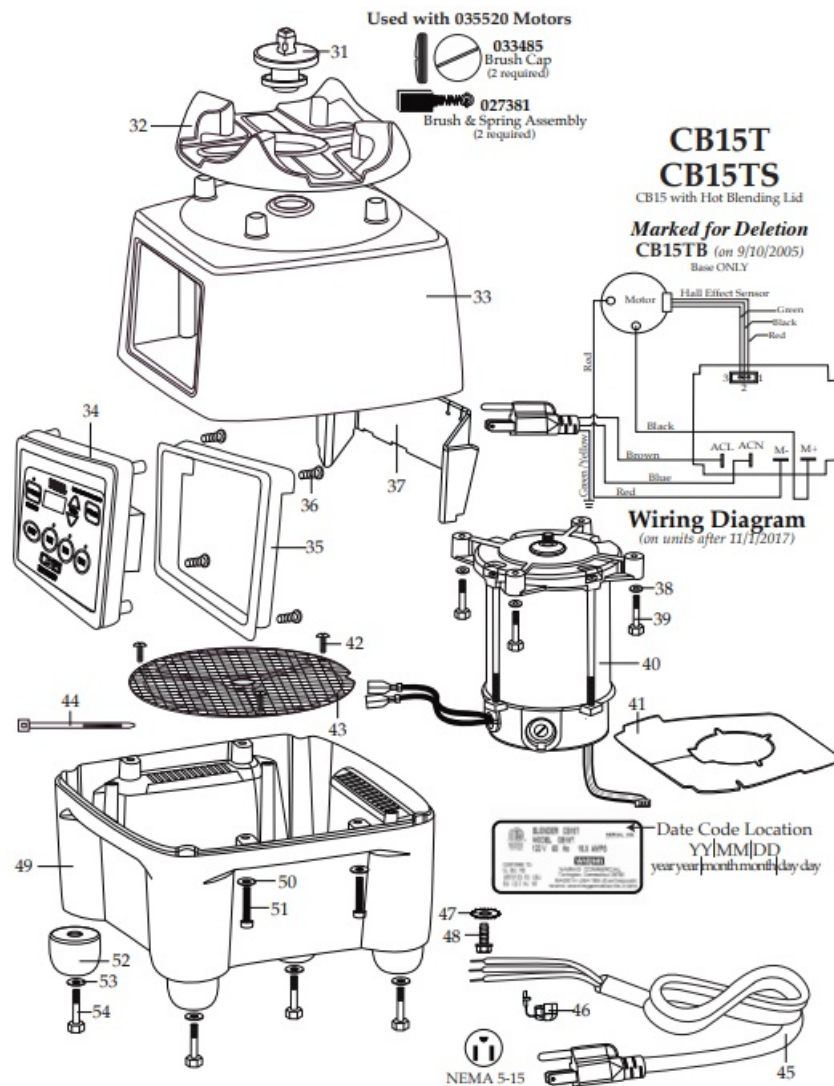
Unit Information

- 15.0 Amps. – 3.75 HP
- 3 Year Limited Motor Warranty

- Electronic Membrane Keypad
- Slow Start™ Blending Mechanism
- Timer Adjustable from 10 seconds to 3 minutes
- Operating Cycle is 3 Min. ON and 1 Min. OFF

PART LIST





Illustration#	Part#	Description
1	024000	Hot Blending Outer Polycarbonate Lid
2	026496	Gasket
3	023998	Hot Blending Lid Baffle Cup
4	002972	Cap Nut
5	027581	Washer
6	027683	Blade
7	018389	"O" Ring
8	027582	Bearing Cap
9	018390	Small "V" Ring
10	023934	Bearing Holder
11	004946	Washer
12	018386	Bearing
13	023926	Spacer

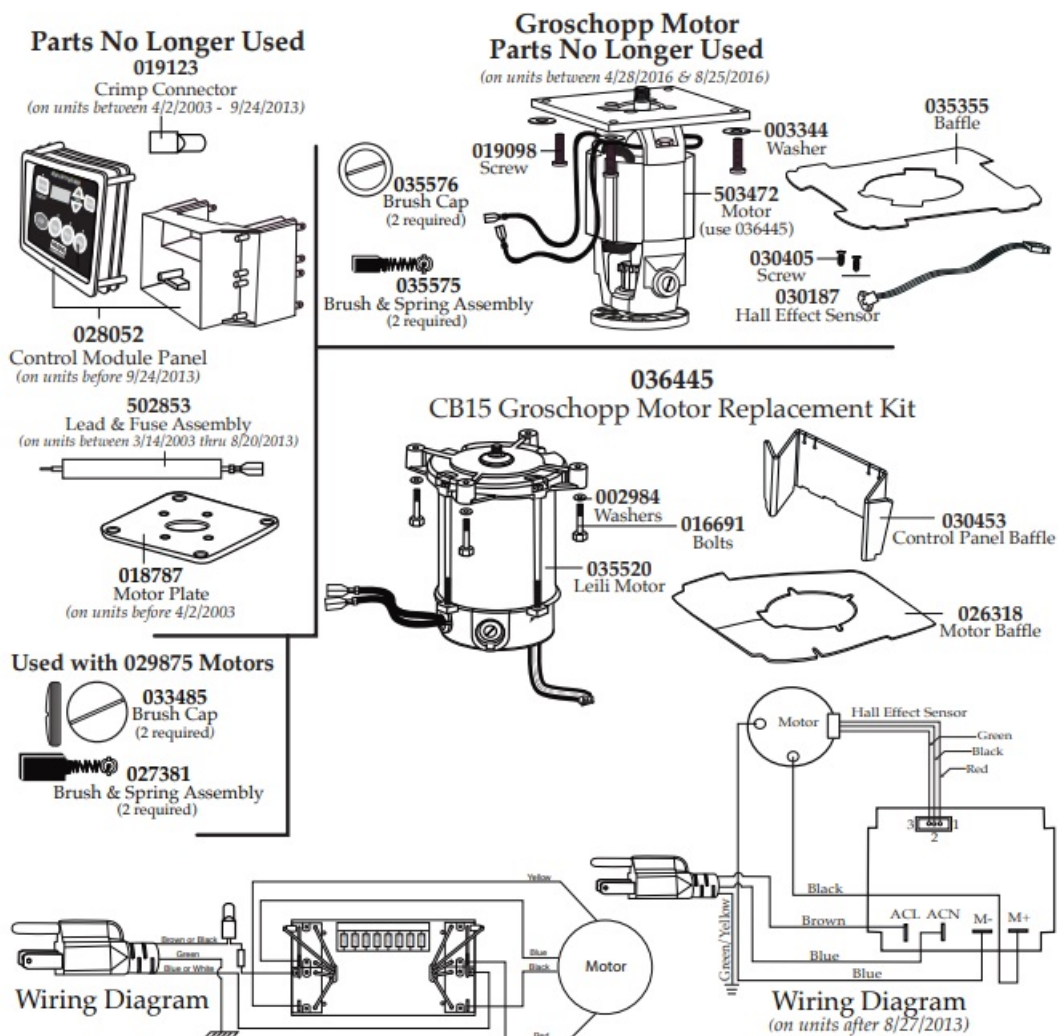
14	023907	Spring Washer	
15	023927	Retaining Ring	
16	023906	Large "V" Ring	
17	023933	Drive Shaft	
18	025817	Key <i>(changed after 6/18/2004)</i>	
19	028530	Cover Insert <i>(changed after 10/9/2006)</i>	
20	028226	Vinyl Outer Lid <i>(changed after 10/9/2006)</i>	
21	013470	Stopper <i>(on units before 10/9/2006)</i>	
22	013469	Stainless Steel Outer Lid	
	023999	Plastic Outer Lid (obsolete)	
23	017442	Stainless Steel Lid Gasket	
	026496	Plastic Lid Gasket <i>(units before 10/9/2006)</i>	
24	008791	Latch Wire (3 required)	
25	502773	Bracket Assembly (spot welded to container	3 required)
26	023909	Double Handle Container	
27	502977	Blending Assembly (complete)	
28	004949	Container Base Gasket	
29	025571	Container Support <i>(changed after 8/12/2002)</i>	
30	012008	Lock Nut	
31	503328	Coupling with Magnet Ring <i>(on units after 9/16/2013)</i>	
	502696	Coupling	

Illustration#	Part#	Description
32	025871	Jar Pad
33	028025	Top Housing <i>(changed after 10/26/2010)</i>
34	030895	Control Panel <i>(on units after 9/16/2013)</i>
	028052	Control Module Panel
35	029888	Rear Control Panel <i>(on units after 9/16/2013)</i>
36	026497	Screw (4 required)
37	030453	Control Panel Baffle <i>(on units after 9/16/2013)</i>
38	002984	Washer (4 required <i>on units after 8/25/2016)</i>)
	003344	Washer (4 required <i>on units after 3/28/2016)</i>)

	002984	Washer (4 required <i>on units after 3/12/2003</i>) (8 required for use with 015434)
39	016691	Hex Bolt (4 required <i>on units after 8/25/2016</i>)
	019098	Screw (4 required <i>on units after 3/28/2016</i>)
	016691	Screw (4 required <i>on units after 3/12/2003</i>)
	015434	Screw (4 required holds mounting plate to motor)
		(4 required holds motor to top housing)
40	035520	Leili Motor (<i>on units after 11/1/2017</i>)
	029875	ECM Motor with MTP (<i>on units after 8/25/2016</i>)
	503472	Groschopp Motor Modified (<i>on units after 3/28/2016 use 036445</i>)
	029875	ECM Motor with MTP (<i>on units after 9/26/2013</i>)
	503323	Motor with Sensor (<i>on units after 8/27/2013</i>)
	026170	ECM Motor (<i>on units after 3/5/2003</i>)
	018788	Motor (no longer available)
41	026318	Baffle (<i>on units after 8/25/2016</i>)
	035355	Baffle (<i>on units after 3/28/2016</i>)
	026318	Baffle
42	026500	Screw (6 required)
43	018791	Screen
44	013731	Cable Tie (1 required <i>on units after 9/16/2013</i>) – (5 required)
45	503329	Cord Set (<i>on units after 9/16/2013</i>)
	502855	Cord Set (<i>on units after 3/5/2003</i>)
	501956	Cord Set
46	018811	Strain Relief
47	002943	Ground Washer (<i>on units after 8/18/2009</i>)
	014798	Washer
48	027278	Ground Screw (<i>on units after 8/18/2009</i>)
	016317	Screw
49	026317	Bottom Housing
50	002984	Washer (4 required)
51	026412	Screw (4 required)

Illustration#	Part#	Description
52	026296	Foot (4 required)
53	018314	Washer (4 required)
54	026493	Screw (4 required)

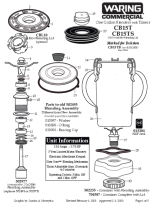
ACCESSORIES



ABOUT COMPANY

- 314 Ella T. Grasso Ave.
- Torrington, CT 06790
- **Tele.** 1-800-269-6640
- **Fax** 860-496-9017
- www.waringcommercialproducts.com

Documents / Resources



[WARING CB15T Ultra Heavy Duty Blender](#) [pdf] Instruction Manual
CB15T Ultra Heavy Duty Blender, CB15T, Ultra Heavy Duty Blender, Heavy Duty Blender, Duty Blender, Blender

References

- **[Waring® Commercial](#)**