



# Wanoore 2BDE9-FY-GD Smart Computer Monitor Light User Manual

[Home](#) » [Wanoore](#) » Wanoore 2BDE9-FY-GD Smart Computer Monitor Light User Manual 

## Wanoore 2BDE9-FY-GD Smart Computer Monitor Light User Manual



### Contents

- [1 Smart Computer Monitor Light](#)
- [2 Parameters](#)
- [3 Dimension & Components](#)
- [4 Installation](#)
- [5 How to Control the light with APP](#)
- [?](#)
- [6 Documents / Resources](#)
  - [6.1 References](#)
- [7 Related Posts](#)

## Smart Computer Monitor Light

### Warning

1. Please check if the light and the parts are intact before installation.
2. Make sure to cut off power before installation.

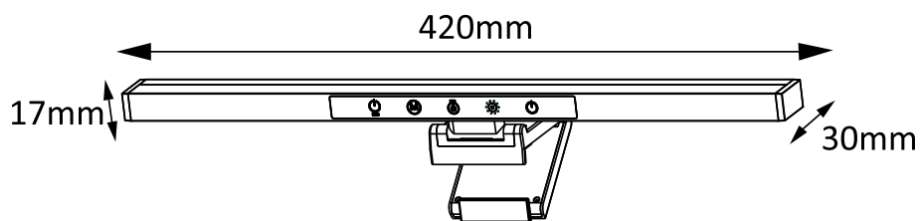
3. Please do not place this light in corrosive conditions.
4. If there is any damage to the cord, please cut off the power and stop using it immediately.
5. Please do not retrofit the light within the warranty period.
6. To ensure the light works properly, please use the voltage indicated on the packing.

## Parameters

Model	FY-GD
Wattage	10W
Input	DC5V 2A
Color	RGB& Cool+ Warm White
Color Temperature	2700K-6500K
CRI	90
Control	Touch Control & Phone APP
Working temperature	-20~40°C

## Dimension & Components

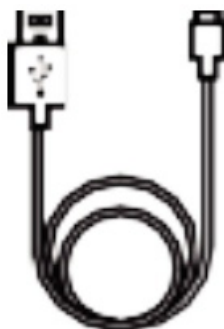
- Weight: 356g

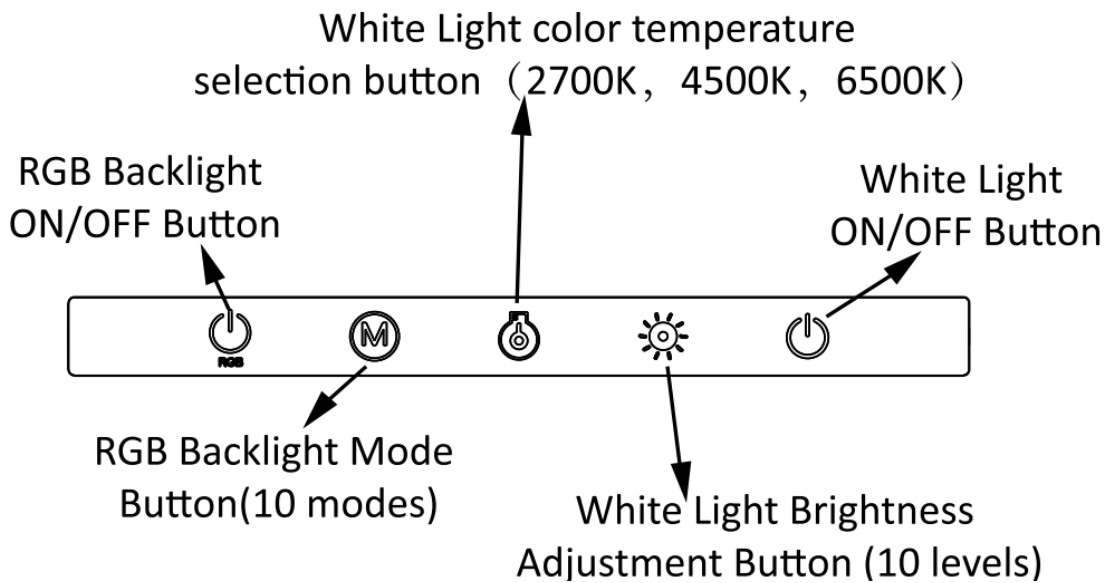


- Bracket

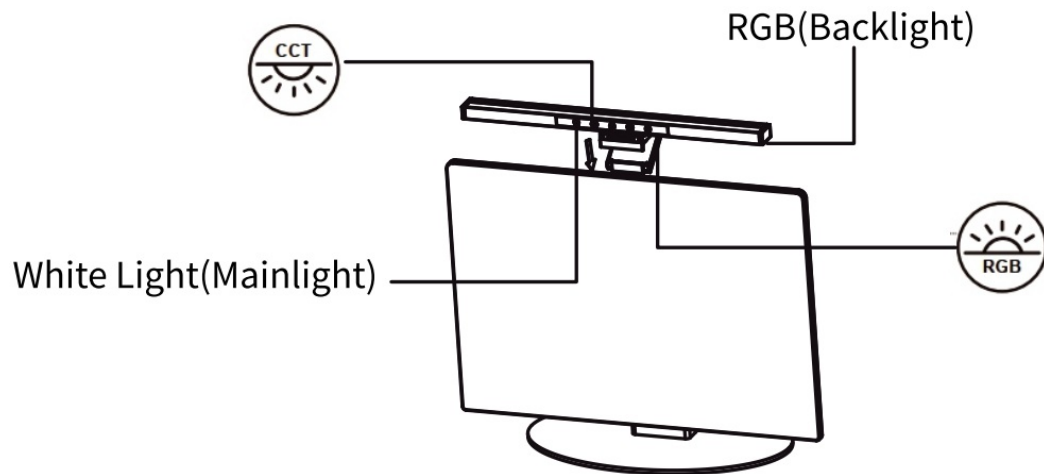


- USB cable

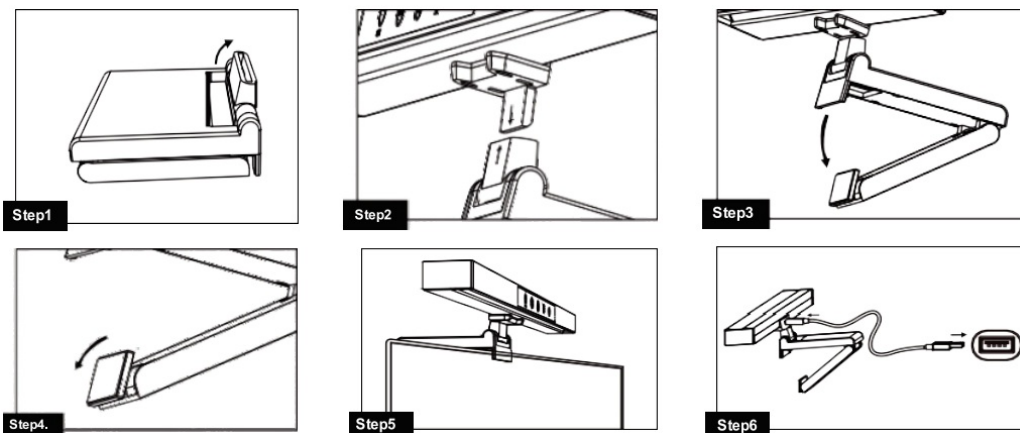




## Installation



1. Place the slot to vertical direction, insert the light trim into slot of bracket.
2. Unfold the bracket and set the angle as you need, open the anti-slip pad, hook the light on the computer.
3. Connect the light with computer via USB cable.



## How to Control the light with APP ?

1. The farthest distance for the mobile phone APP to control the smart lights is no more than 32ft(10m), to control the light efficiently please make sure that all lights are within 32ft(10m) of your phone.

2. Phone APP can control up to 8 pcs the smart lights at the same time, you are able to preset the colors and modes according to your preference.

### Step 1, APP Installation

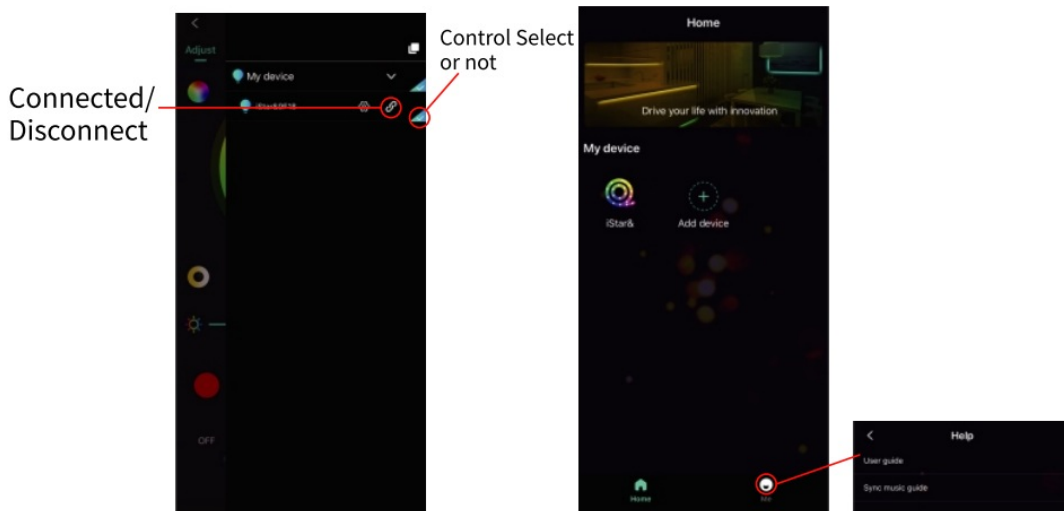
1. Scan the QR code as the right to download the APP
2. Or Search 'Sun Home -A better life' and download the APP in Apple Store or Google Player.



### Step 2, Bluetooth Connection

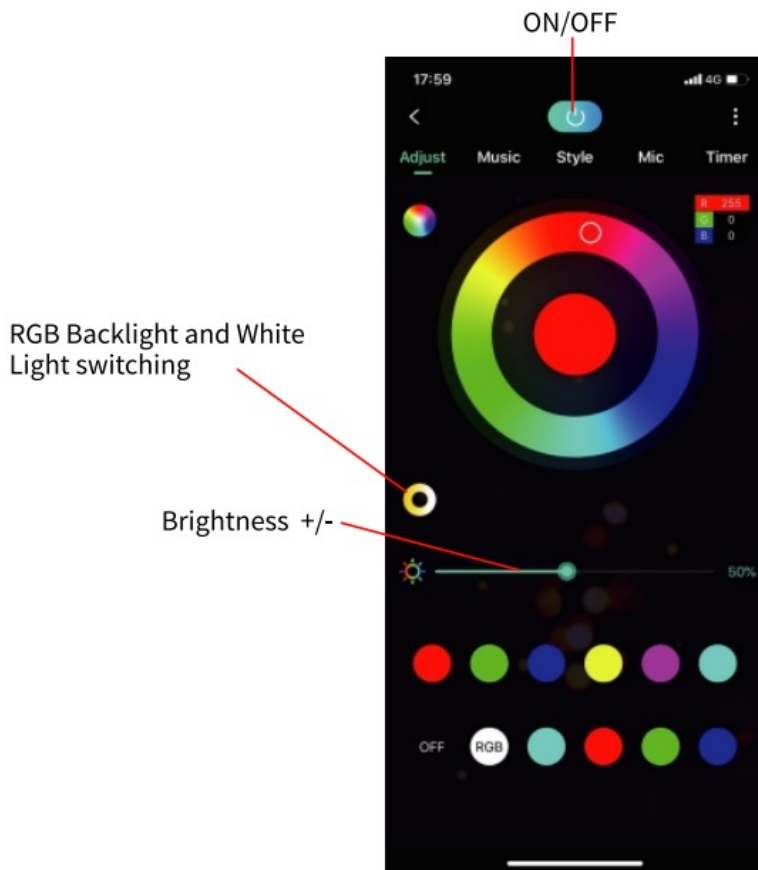
**NOTE:** Please following the below steps for the first time to use this APP.

1. Please enter your phone settings, open the Bluetooth. Note: For Android phone, also need the Location Services.
2. Open the 'Sun Home -A better life', the app will auto to scan and connect the device. Or click 'Add device' to start searching for devices.
3. Click the 'Me' button to enter the 'Help' interface, there will be instructions for User guide and Sync music guide.

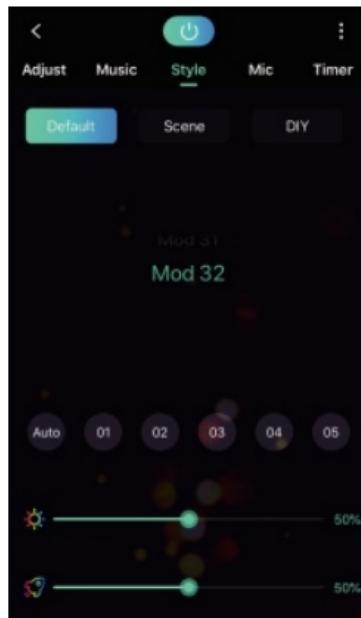
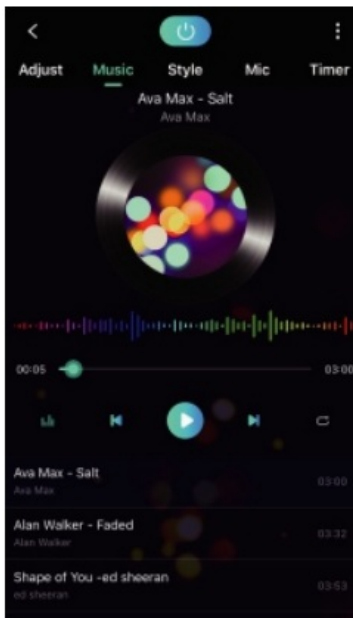


### Step 3, User interface operation

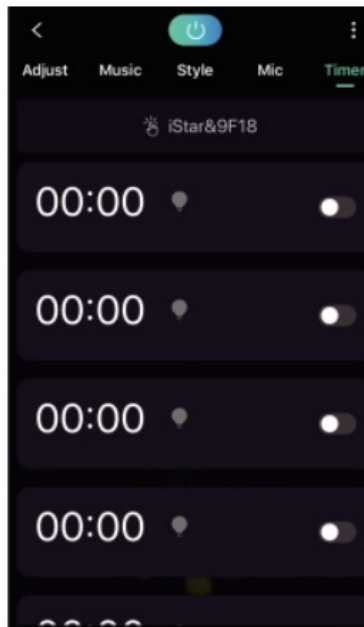
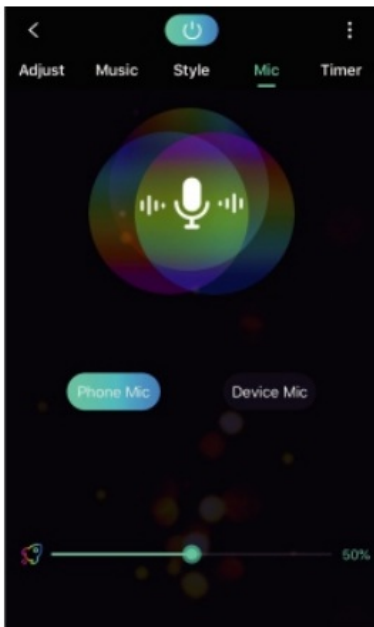
1. Adjust' Button function Specification and operation. In this interface you can select the colour you want and adjust the Brightness.



2. 'Music' button function specification and operation. Play the music you like that the light will change to sync the music.
3. 'Style' button function specification and operation. The light colour will change following the default scene you select.



4. 'Mic' button function specification and operation. The light color will sync the voice or any environment voice via your phone. You can change the microphone sensitivity as you need.
5. 'Timing' button function specification and operation. Set the On/off timing as your need, the light will be auto on/off accordingly when it's enable



### Warning:

This device complies with Part 15 of the FCC Rules. Operation is subject to the following two conditions: (1) this device may not cause harmful interference, and (2) this device must accept any interference received, including interference that may cause undesired operation.

Changes or modifications not expressly approved by the party responsible for compliance could void the user's authority to operate the equipment. NOTE: This equipment has been tested and found to comply with the limits for a Class B digital device, pursuant to Part 15 of the FCC Rules. These limits are designed to provide reasonable protection against harmful interference in a residential installation. This equipment generates uses and can radiate radio frequency energy and, if not installed and used in accordance with the instructions, may cause harmful interference to radio communications. However, there is no guarantee that interference will not occur in a particular installation. If this equipment does cause harmful interference to radio or television reception, which can be determined by turning the equipment off and on, the user is encouraged to try to correct the interference by one or more of the following measures:

- Reorient or relocate the receiving antenna.
- Increase the separation between the equipment and receiver.
- Connect the equipment into an outlet on a circuit different from that to which the receiver is connected.
- Consult the dealer or an experienced radio/TV technician for help.

**NOTE:** This device and its antenna(s) must not be co-located or operation in conjunction with any other antenna or transmitter.


### RF Exposure Statement

To maintain compliance with FCC's RF Exposure guidelines, This equipment should be installed and operated with minimum distance of 20cm from your body. This device and its antenna(s) must not be co-located or operation in conjunction with any other antenna or transmitter.



---

## Documents / Resources

	<p><a href="#">Wanoore 2BDE9-FY-GD Smart Computer Monitor Light</a> [pdf] User Manual 2BDE9-FY-GD Smart Computer Monitor Light, 2BDE9-FY-GD, Smart Computer Monitor Light, Computer Monitor Light, Monitor Light, Light</p>
---	---

## References

- [User Manual](#)

[Manuals+.](#) [Privacy Policy](#)

This website is an independent publication and is neither affiliated with nor endorsed by any of the trademark owners. The "Bluetooth®" word mark and logos are registered trademarks owned by Bluetooth SIG, Inc. The "Wi-Fi®" word mark and logos are registered trademarks owned by the Wi-Fi Alliance. Any use of these marks on this website does not imply any affiliation with or endorsement.