

**WANO**  
solutions  
**VD09 Smart  
Lock**



## WANO Solutions VD09 Smart Lock Instruction Manual

[Home](#) » [WANO Solutions](#) » WANO Solutions VD09 Smart Lock Instruction Manual 

### Contents

- [1 WANO Solutions VD09 Smart Lock](#)
- [2 Product Usage Instructions](#)
- [3 FAQs](#)
- [4 Accessory](#)
- [5 Door opening direction](#)
- [6 Shift the left and right](#)
- [7 Adjust the mortise direction](#)
- [8 Caution before installation](#)
- [9 Installation](#)
- [10 Documents / Resources](#)
  - [10.1 References](#)



**WANO Solutions VD09 Smart Lock**



## Product Usage Instructions

### Installation

1. Ensure the door is suitable for the smart lock installation.
2. Adjust the mortise direction as needed using the latch shifting plate.
3. Verify that the door thickness falls within the compatible range of 35mm to 45mm.

### Programming and Setup

1. Follow the manufacturer's instructions to program the smart lock with desired settings.
2. Set up access codes or keys as required for entry.
3. Test the lock to ensure proper functionality before regular use.

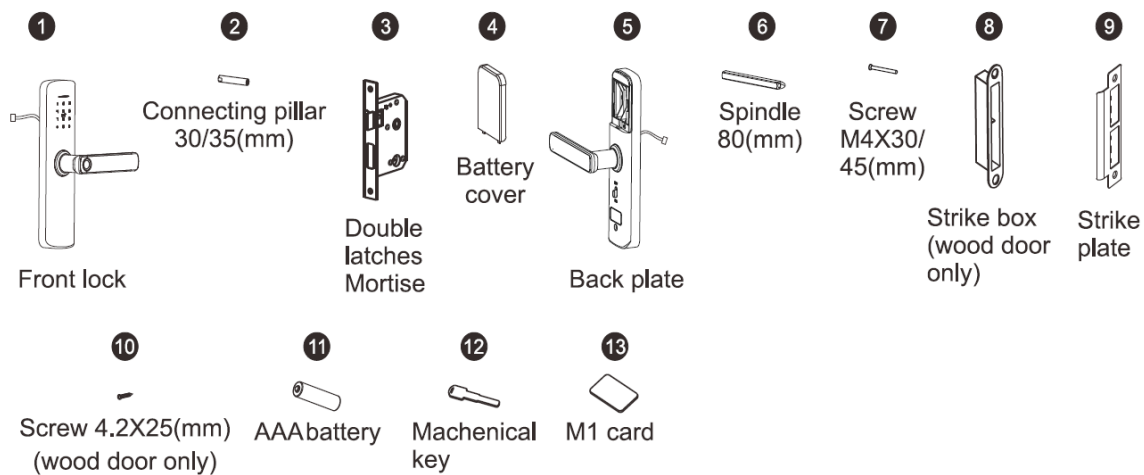
### Regular Use and Maintenance

1. Use the provided keys or access codes to unlock the smart lock.
2. Keep the lock clean and free from debris for optimal performance.
3. Change access codes periodically for security reasons.

### FAQs

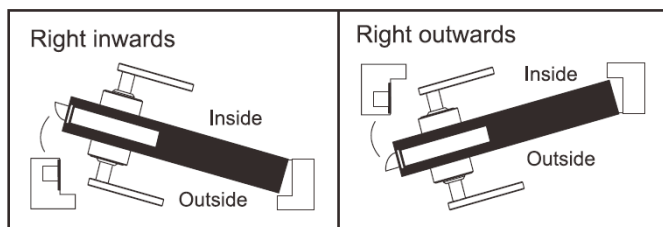
- **Q: Can this smart lock be used on both homestay doors and office doors?**
  - A: Yes, this smart lock is suitable for indoor doors, including homestays and offices.
- **Q: What is the door thickness range compatible with this smart lock?**
  - A: The smart lock is compatible with door thicknesses ranging from 35mm to 45mm.

### Accessory

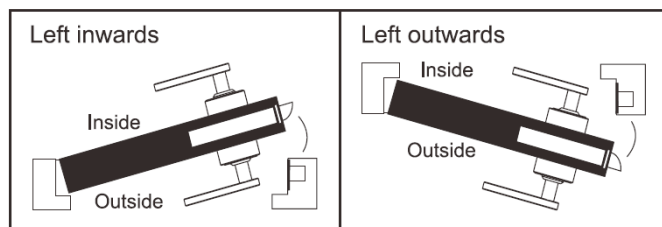


## Door opening direction

### ① Right handle opening



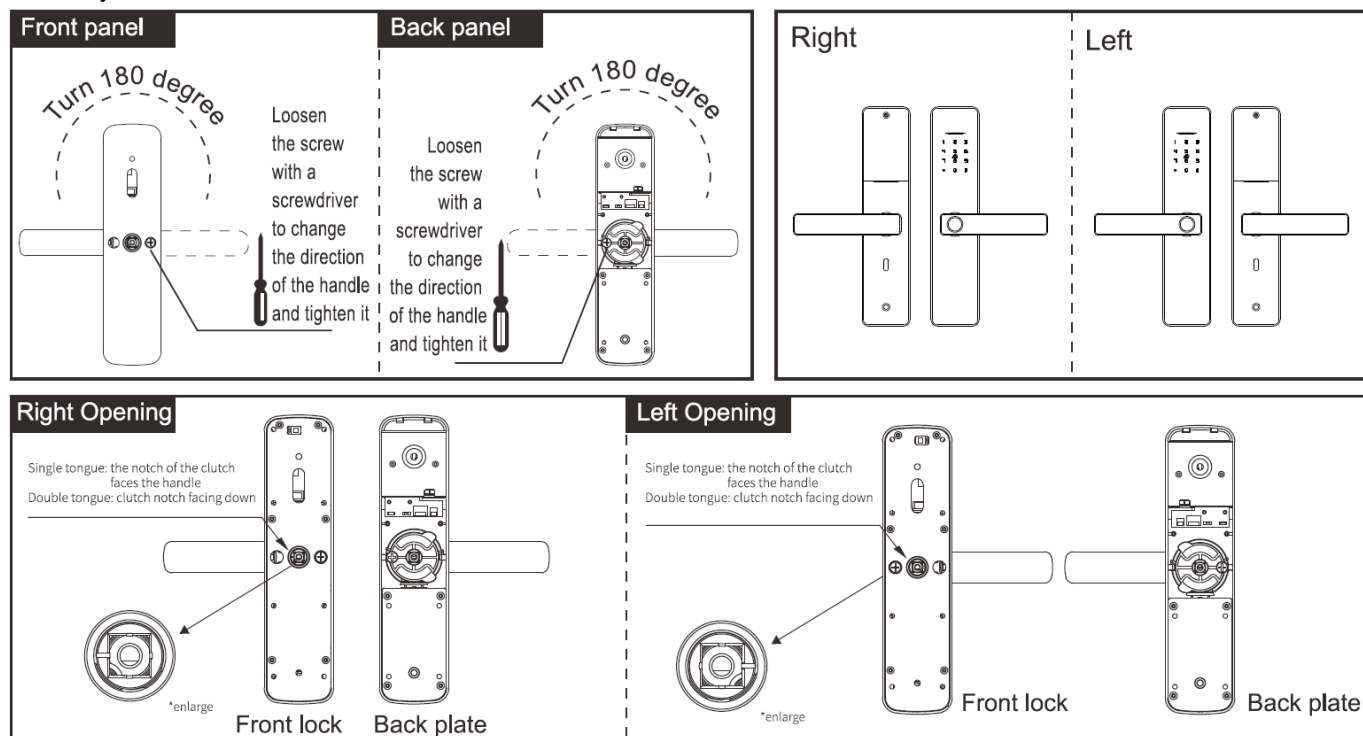
### ② Left handle opening



## Shift the left and right

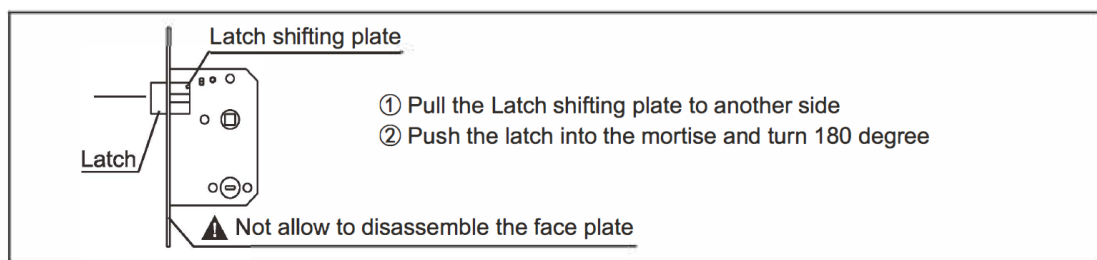
According to your needs to adjust the left and right by a screwdriver to release the screw, then turn the handle 180 degrees, then fix the screw.

**Note:** Do not unscrew the screw in the handle hole, if there is broken when you do that, you will not have any warranty.



## Adjust the mortise direction

According to the your need to adjust the mortise direction.



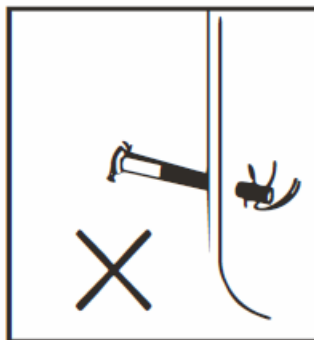
## Accessories for sorts of door thickness

Available door thickness 35 mm-55 mm. If the door is over this range, please contact us for more information. Please select the correct accessories according to your door thickness.

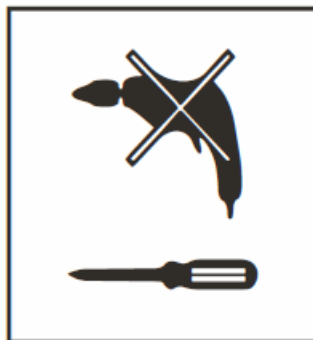
Code and name	Specifications(mm)	door thickness ranges & QTY	
		35 ≤ M ≤ 40(mm)	41 ≤ M ≤ 55(mm)
⑥ Spindle 80(mm)		1	1
⑩ Screw 4.2X25(mm) (wood door only)		4	4
⑩ Screw M4X30/ 45 (mm)		1	
		1	2
② Connecting pillar 30/35(mm)		1	
		1	2

## Caution before installation

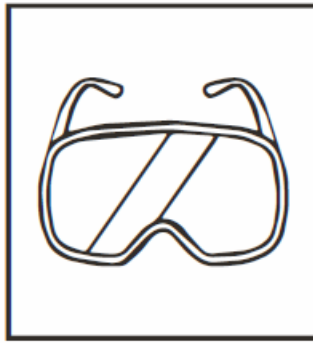
1. Do not be a strong force when installation, avoid to damaging the lock.



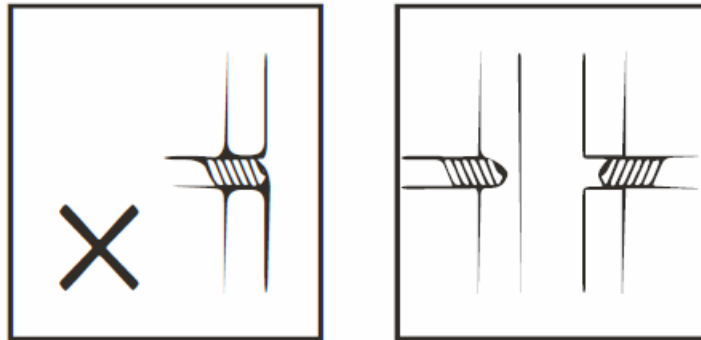
2. Use correct installation tools.



3. Wear glass to protect your eyes when drilling holes.



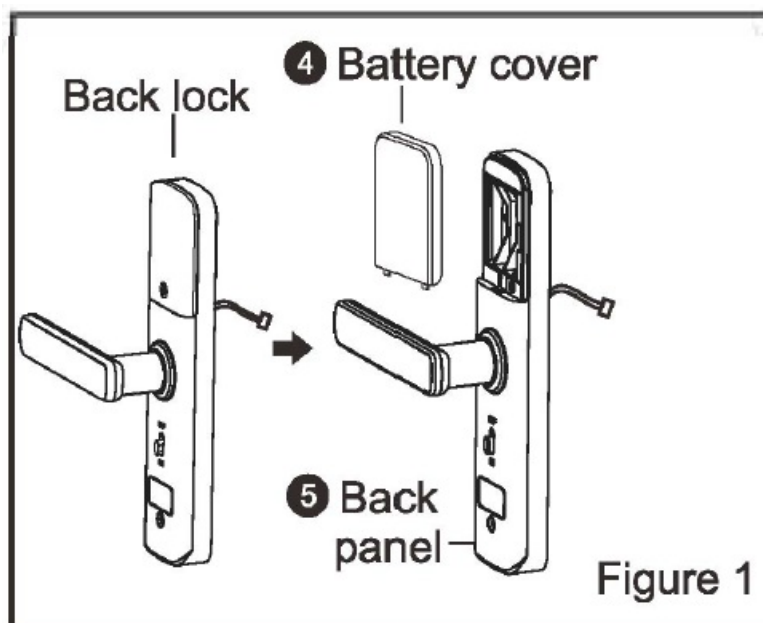
4. Drilling the door holes on both side of the door avoiding to damaging the door plate.



## Installation

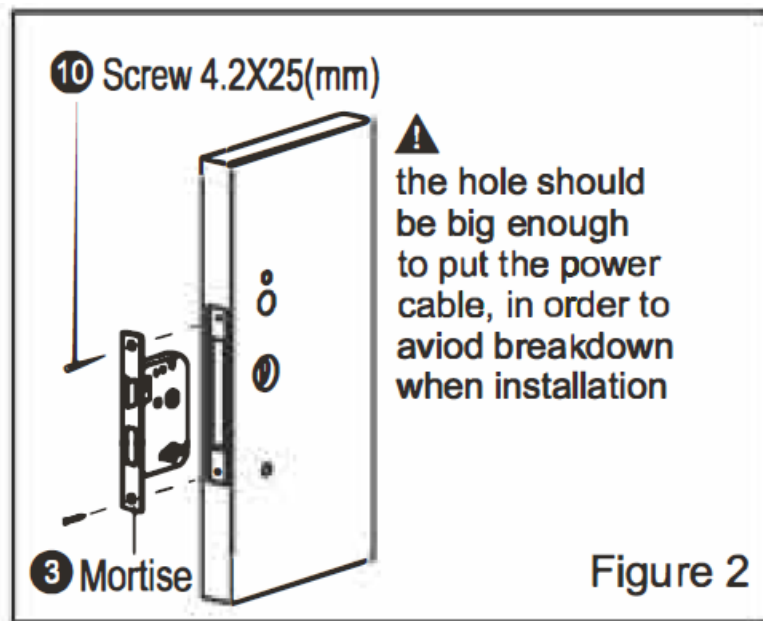
### Installation steps:

1. Divide the Back Lock into Battery cover and Back panel.



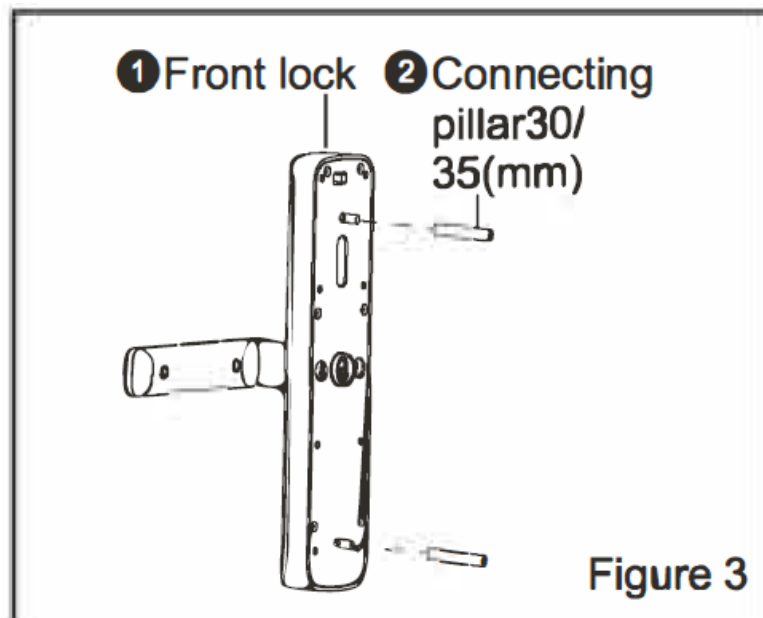
(1) As Figure 1:

2. Make the mortise cable get through the door plate, fix the mortise with 2 screws.



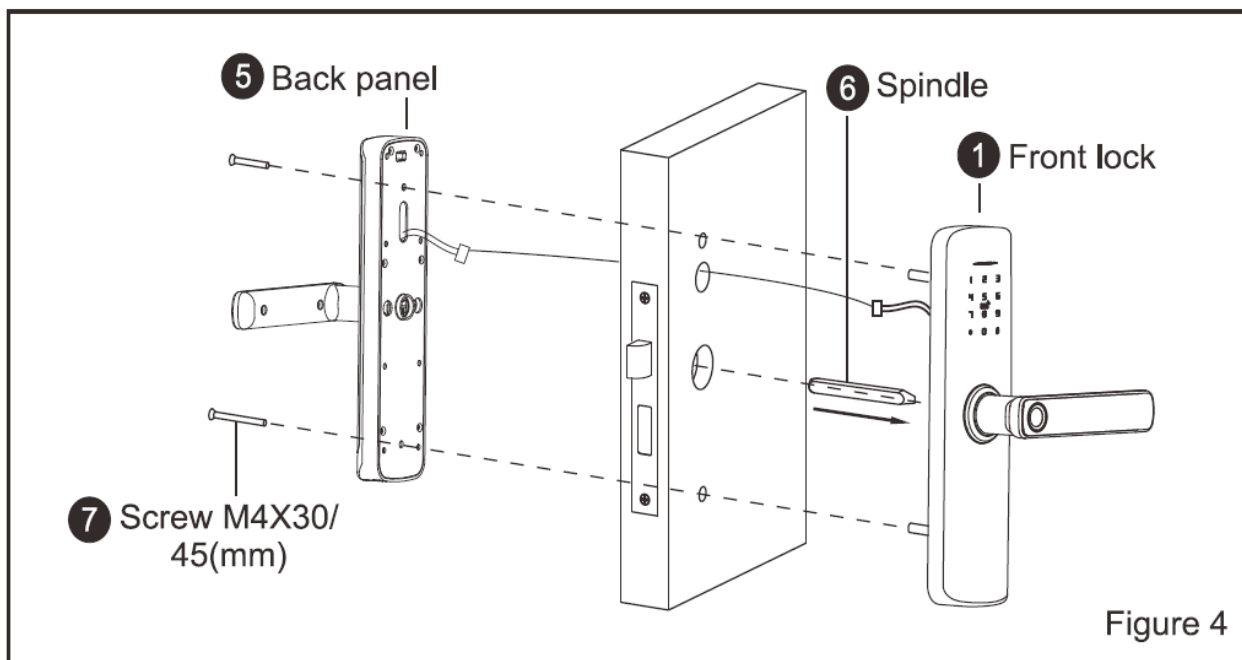
(2) As Figure 2:

3. Fix the two connecting pillars on the front panel



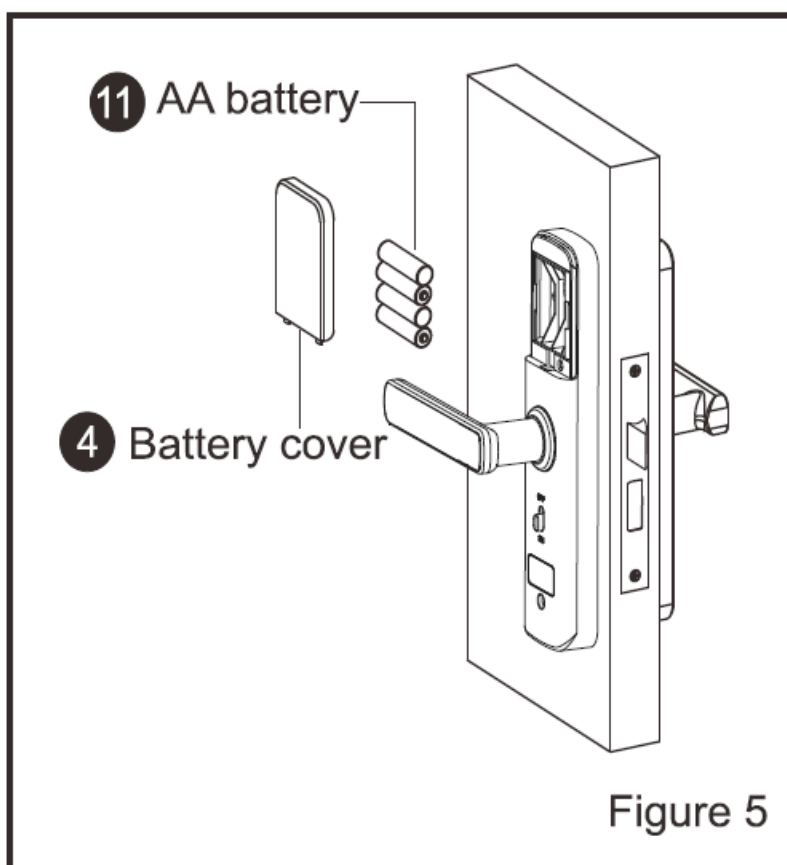
(3) As Figure 3:

4. Insert the tapered end of the square shaft into the sleeve hole on the front panel.
  - Make the front panel cable across to the door plate and connect to the back panel.
  - fix the front panel and back panel with two screws.



(4) As Figure 4:

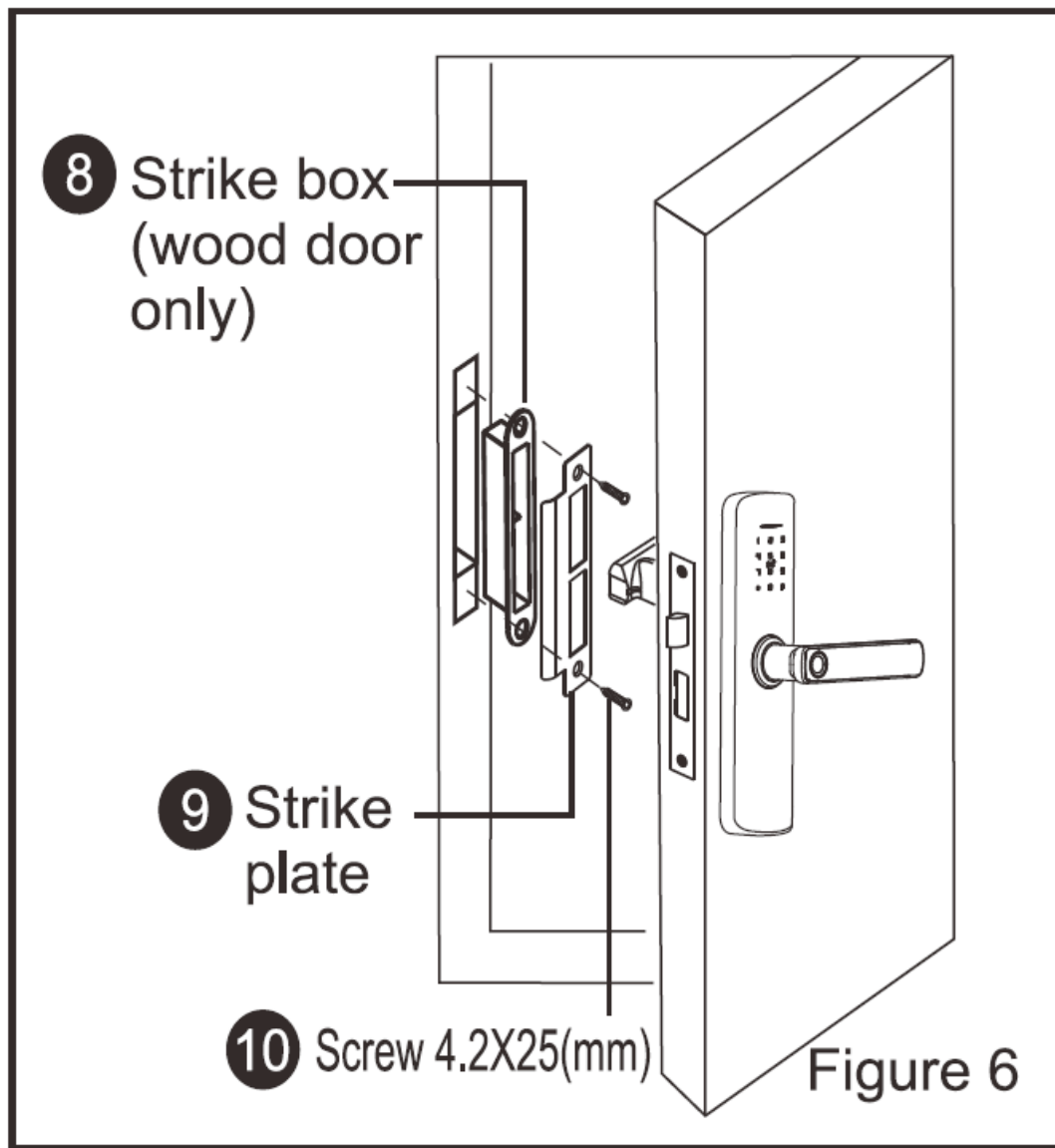
5. Put the Batteries correctly and fix the Battery cover.



(5) As Figure 5:


6. Install the strike box and strike plate on the door frame with 2 screws.

- **(Note:** this no strike box for steel door frame)
- Test the lock if it works correctly.



(6) As Figure 6:

## Documents / Resources

	<p><a href="#">WANO Solutions VD09 Smart Lock</a> [pdf] Instruction Manual VD09, VD09 Smart Lock, Smart Lock, Lock</p>
---	--

## References

- [User Manual](#)

Pages: 1 [2](#)