

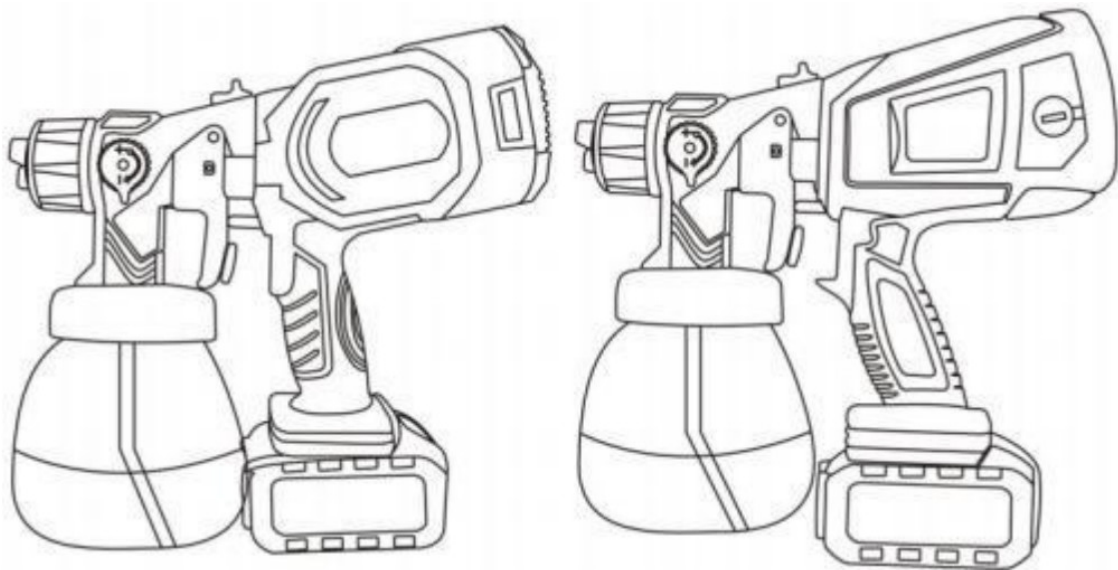


WANGMI PSBD-CS021DB Cordless Paint Sprayer User Manual

[Home](#) » [WANGMI](#) » WANGMI PSBD-CS021DB Cordless Paint Sprayer User Manual 

WANGMI

Cordless Paint Sprayer PSBD-CS021DB
User Manual

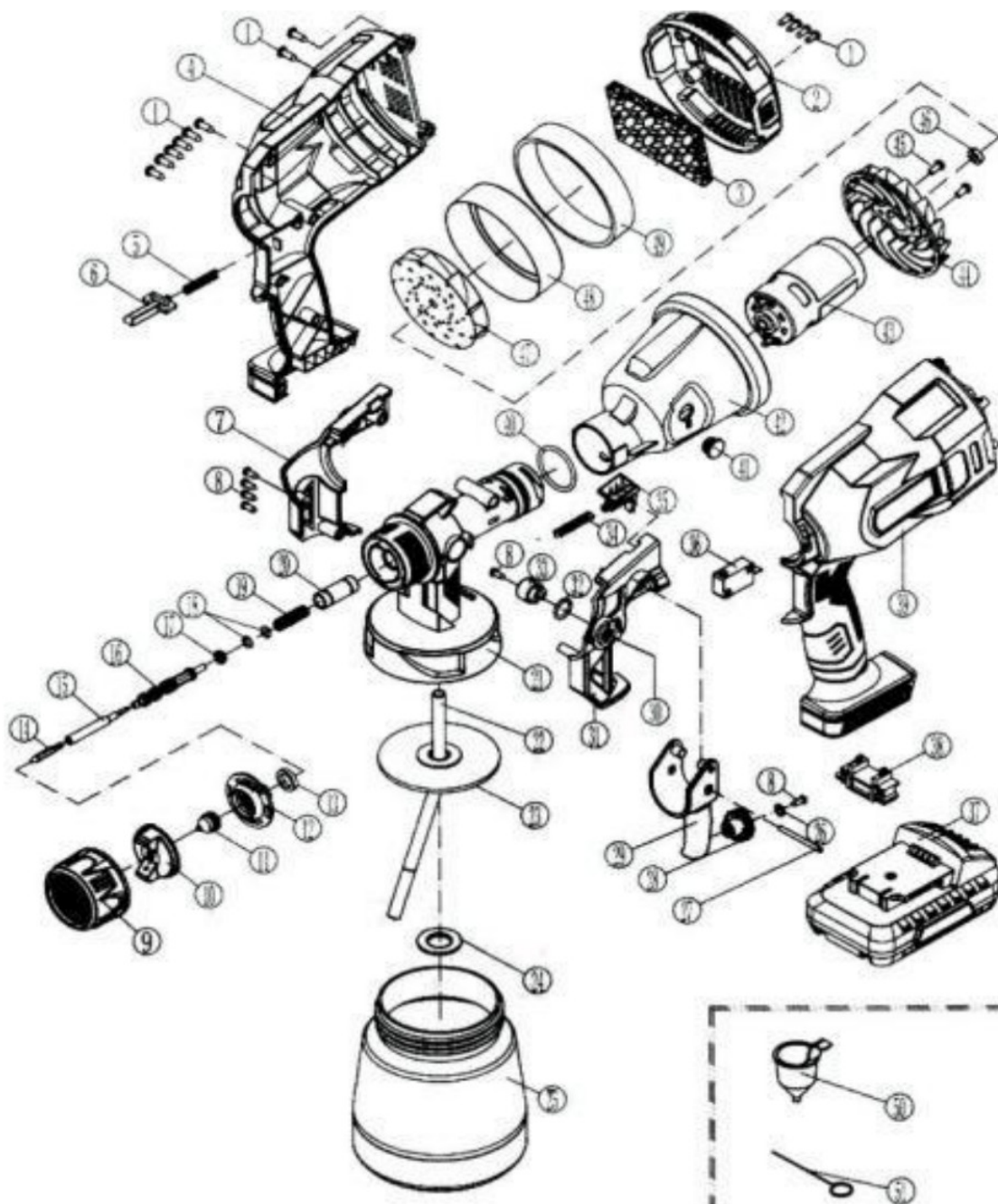


Please read this manual carefully before using the paint sprayer, any improper use may cause equipment damage.

Contents

- 1 Explosive View
- 2 Technical Parameters
- 3 What You Get
- 4 Warm Tips
- 5 How to Dilute Different Fluids
- 6 How to Choose Spraying Nozzle
- 7 How to use
- 8 Trouble Shooting
- 9 Warning
- 10 Warranty
- 11 Documents / Resources
- 11.1 References

Explosive View



1	ST2.9*10SCRE	27	Short pin
2	Rear cover	28	Adjusting knob
3	Cotton filter	29	Trigger
4	Right cover	30	Spray a knob
5	Switch plunger spring	31	Left side cover
6	Switch plunger	32	O-ring
7	Right side cover	33	Atomization circle
8	ST3.5*10SCRE	34	Vent spring
9	Big nut	35	Lock catch
10	Spray ball	36	Micro-switch
11	Spray nozzle	37	Battery Pack
12	Barge board	38	Battery pack pin
13	Nozzle seal	39	Left cover
14	Needle	40	Gun-ring
15	Needle insert	41	Stopper
16	Needle seat	42	Motor cover
17	Bowl seals	43	550 Motor
18	O-ring	44	Wind mill
19	22 Needle spring	45	M4*8 SCRE
20	Needle set	46	Motor gasket
21	Gun	47	Wind leaf
22	Pipette	48	Wind cover
23	Cup-ring	49	Damping ring
24	Suction pipe splint	50	Funnel
25	Sprayer Cup	51	Pin
26	Φ 3 flat gasket		

Technical Parameters

Paint Sprayer Part Number: PSBD-CS021DB	
Rated power: 200W	Lithium Battery Part Number: LB-MA4000-5CL
Rated voltage: 21V	Battery Voltage: 21V
Frequency: 50/60 HZ	Battery Capacity: 4000mAh
Rated speed: 30000 RPM	Battery Fully Charge: 3 4 hours
Max viscosity: 120 Din-s	Fully Charged Battery Spray: 2 2.5 Gal
Max flow: 1000ml/min	Battery with Level Display: Yes
Spraying width: 6" 12"(20-30cm)	Portable Charger Part Number: BC-DC21-SCNU
Best spray distance: 9" 14"(25-35cm)	Charger Input: 100V 240V
Paint Sprayer Cup Capacity: 30oz(900ml)	Charger Output: 21V

Warranty: For cordless paint sprayer main part, we offer 90 day returns and refunds, 12 month returns and exchanges, and 7×24 hour quick response customer service. If you have any questions, please contact us via your order or email us wangmi20140508@163.com, we will be always here for you!

What You Get

You will get:

Cordless Paint Sprayer × 1 4.0 Ah Lithium Battery with Indicator Display × 1 2A Battery Charger × 1,;900ml Paint Sprayer Cup × 1 Brass Nozzles × 5 Plastic Viscosity Cup × 1 Cleaning Brush × 1 Cleaning Needle × 1 Paper Paint Filter × 5 User Manual × 1

In addition, we also offer additional accessories to buy, such as 4.0 Ah Battery , Paint Sprayer Cup, Paper Paint Filter, and Paint Filter Bag. You can find these accessories in our store, or you can contact us by email.

Warm Tips

1. Before spraying, the surface dust should be cleaned up. The result of spraying largely depends on the smoothness and cleanliness of the surface to be coated.
2. Before spraying, please add some water (or paint thinner) to dilute the paint and stir to ensure that your paint passes through the viscosity cup smoothly within 100 seconds.
3. Before using, please select the appropriate size of brass nozzle and spray pattern, check whether the container and paint spray gun parts are tightened.
4. Before using, practice the spray gun on cardboard or similar surfaces to check if the paint has been diluted to the appropriate viscosity.
5. During using, move the spray gun horizontally or vertically evenly according to the setting of spray mode. The uniform motion of the spray gun produces a uniform surface quality.
6. After spraying, remove the battery firstly, then clean the machine immediately to effectively prevent blockage. All components of the sprayer are detachable. Please use a cleaning brush and needle for proper cleaning to remove residual paint from containers, pipes, and nozzles. Use warm soapy water for latex materials, and mineral spirits for oil-based materials.

Special Attention: When the paint cup is filled with paint, the paint spray gun should not be inverted. The spray gun must be held in the forward direction to avoid liquid blocking the air inlet, resulting in inability to discharge or

damage to the paint spray gun.

How to Dilute Different Fluids

Before spraying, add some water (or paint thinner) to dilute the paint, please refer to the following thinning chart and picture.

Fluid	Run Out Time(Sec)
Oil Enamel	25-60
Oil Based Primer	30-60
Oil Stain	No thinning required
Clear Sealer	No thinning required
Polyurethane	No thinning required
Varnish	20-60
Lacquer sanding sealer	25-35
Lacquer	25-35
Automotive finishes	20-40
Latex	45-90



How to Choose Spraying Nozzle

Nozzle Size	Suggested Fluids	Reference viscosity	Recommend Project
1.0mm	Primer, Varnish, Oil-based Pigments, Cleaning Agent	20-30 Din-s	Table, Chair, Bicycle, Shutter, Cabinets, Wooden Artwork, Model
1.5mm	Sealers, Stains, Enamel, Dyes	30 Din-s	Table, Chair, Bicycle, Shutter, Cabinets, Wooden Artwork, Model
2.0mm	Polyurethane, Chalk Paint, Milk Paint, Automotive Paint	40 Din-s	Railings, Multi-frame, Window Framer, Pipe, Boat, Yard, Furniture, Garage door, Metal Garden Fences, Door
2.5mm	Low Viscosity Primer, Latex Wall Paint, Oil-based Lacquer	40-50 Din-s	Internal Wall, Wooden Garden Fence, Wooden Pile, Corridor
3.0mm	Low Viscosity Primer, Latex Wall Paint, Emulsion Paint	70-80 Din-s	External Wall, Outdoor Floor, Sports Field Line

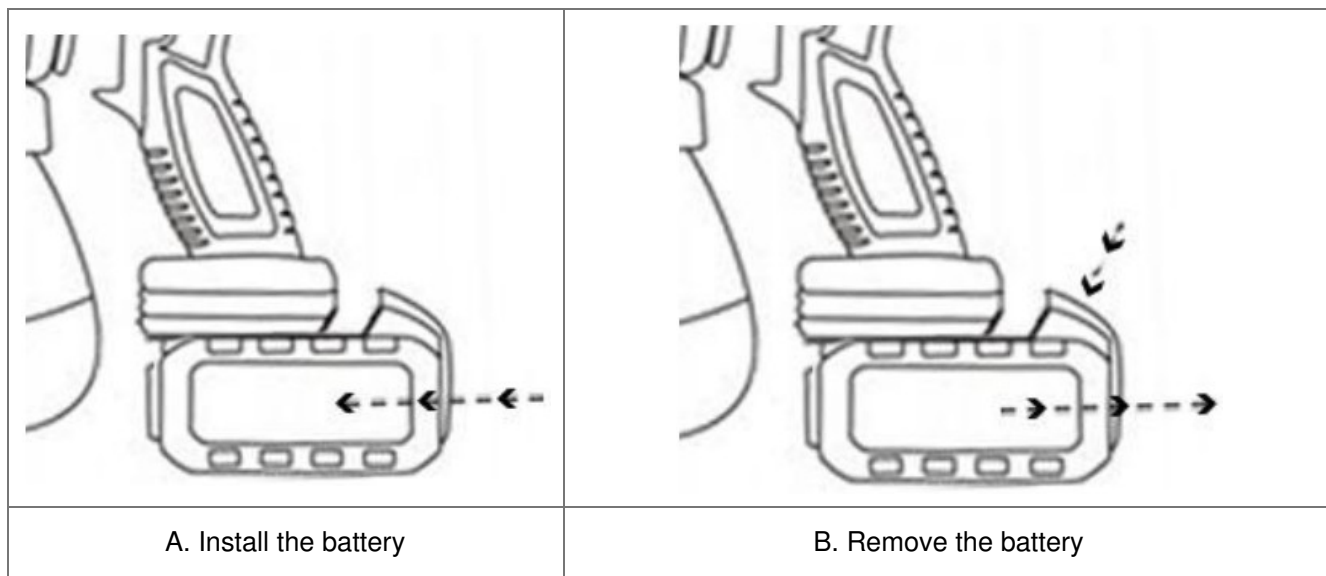
Note:

1. The above applicable fluids and project scenarios only represent our suggestions, and you can make adjustments according to your actual situation.
2. This paint sprayer supports a maximum of 120 Din-s, you should ensure that your paint passes through the viscosity cup smoothly within 100 seconds.

How to use

1. Installing and Removing the Battery

- (a) Install the battery: Align the base of the spray gun with the battery card slot, push the battery parallel and inward towards the red button position, until you hear a click to indicate that the battery is installed in place
- (b) Remove the battery: Hold the sprayer with one hand, while the other hand press the battery red button and pull it outward parallel to separate the sprayer and battery

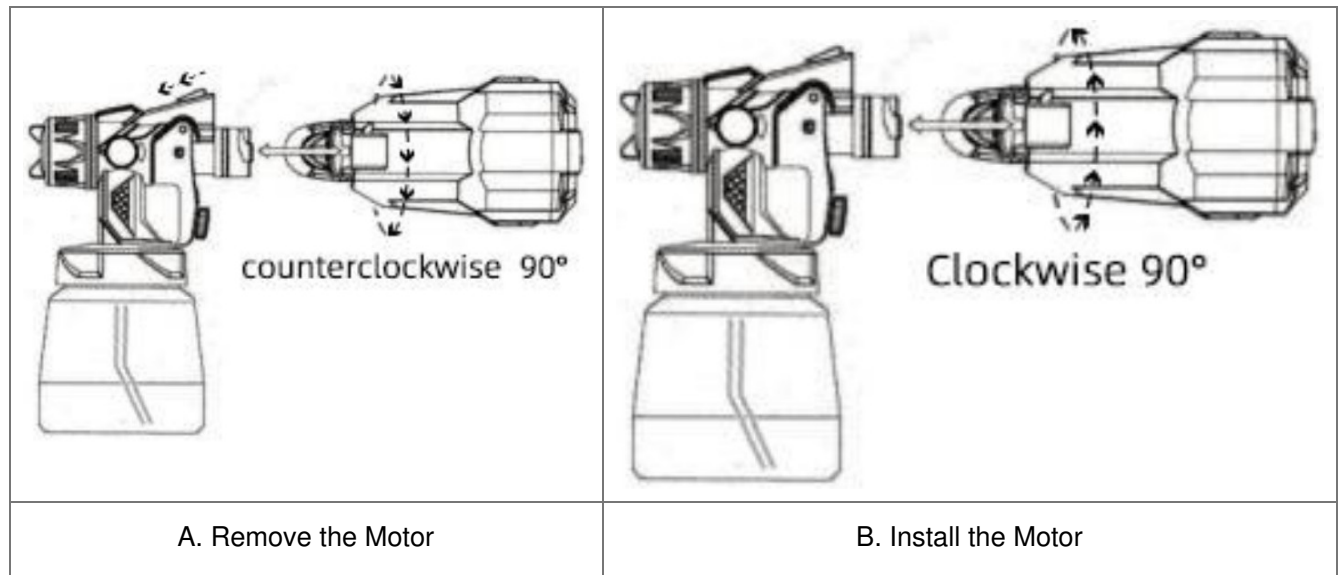


2. Installing and Removing the Motor

- (a) Remove the motor: Hold the gun with one hand, press the latch in the direction of the arrow, and hold the motor handle with the other hand. Rotate it counterclockwise by 90 ° and pull it out forcefully to remove the

motor from the spray gun

(b) Install the motor: Hold the gun with one hand, press the latch in the direction of the arrow, and hold the motor handle with the other hand. As shown in the figure, the motor handle is perpendicular to the spray gun, aligned with the insertion slot, and rotated 90° clockwise to make them a straight line, which is locked

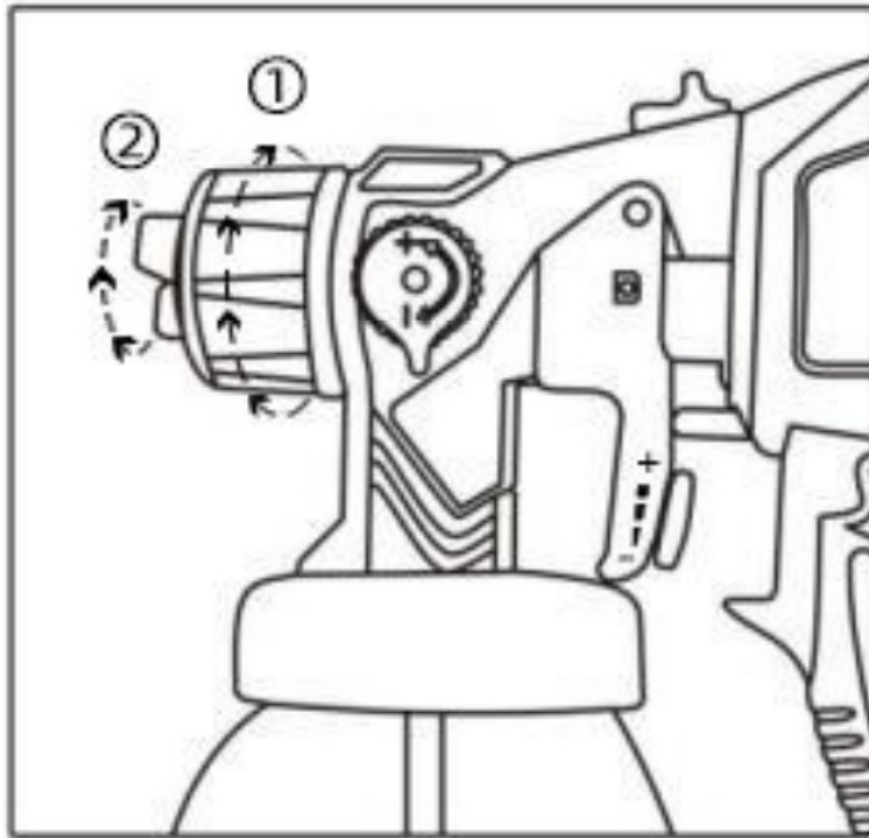


3. Replace spraying nozzle

(1) By default, a spraying nozzle is already installed on the paint sprayer received by the user. If you feel that the size of the nozzle does not match your project, you can replace the nozzle yourself.

(2) Rotate the big nut of the sprayer head counterclockwise until the nut is separated from the sprayer, pull out the nozzle kit, remove the small seal ring and spray ball in turn, replace the appropriate nozzle and reassemble the nozzle kit, align the slot and insert the sprayer, install the big nut, rotate and tighten clockwise

(3) The nozzle kit can be installed vertically or horizontally, which will result in the paint spraying pattern being horizontal or vertical. It is also very simple to switch between these two installation methods. Loosen the big nut counterclockwise until you can rotate the nozzle kit according to your needs, and then tighten the big nut clockwise and inward



Replace Spraying Nozzle

4. Installing and Removing the Sprayer Cup

(1) Install the spray cup: Hold the spray gun with one hand, align the spout of the spray cup with the cover with the other hand, and tighten it counterclockwise

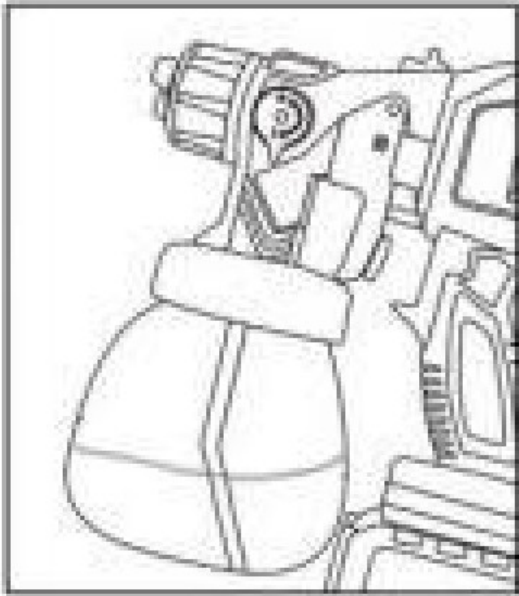
(2) Remove the spray cup: Hold the spray gun with one hand and loosen the spray cup clockwise with the other hand until they separate

5. Adjusting the direction of the suction tube

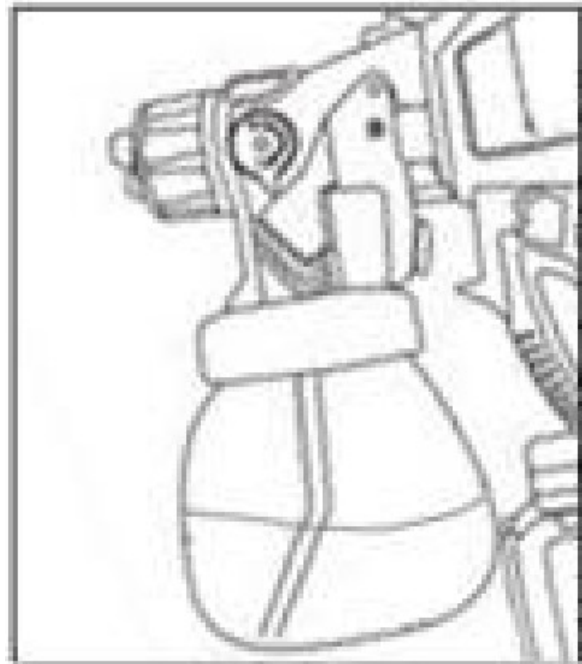
(a) Upward spraying project: You should open the lid of the cup, rotate the inclined tip of the suction tube and make it point towards the handle end

(b) Downward spraying project: You should open the lid of the cup, rotate the inclined tip of the suction tube and make it be away from the handle end

(c) In most cases, horizontal spraying is not necessary to adjust the direction of the suction tube



A: Upward Spraying



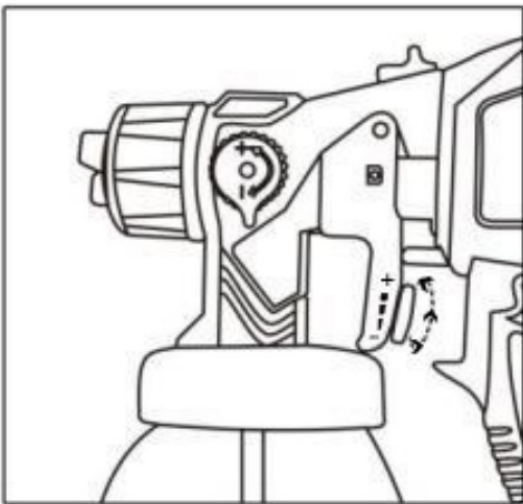
B. Downward Spraying

6. Pour fluid into container, make sure not to exceed 900ml

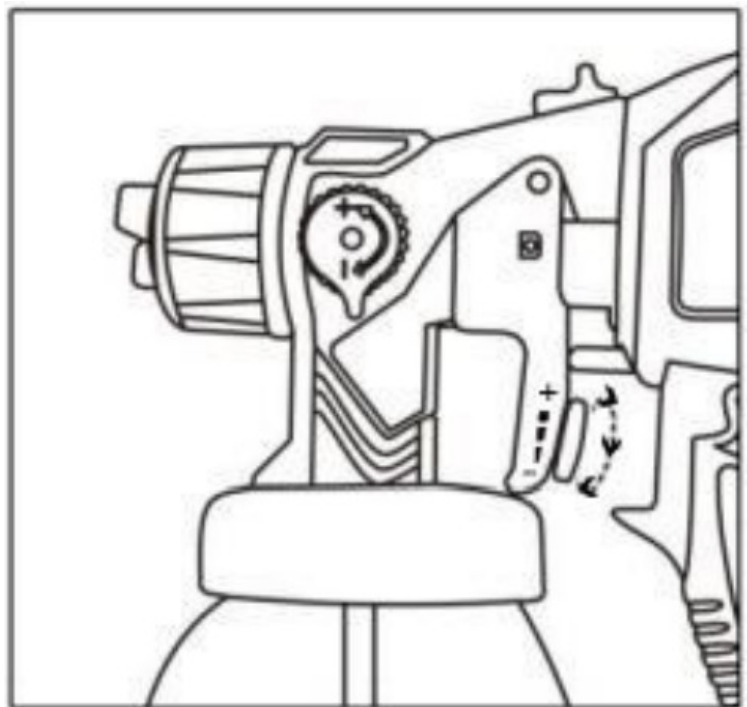
7. Adjusting the flow rate of paint spray

(a) Rotate the flow thread knob clockwise upwards to reduce the amount and thickness of paint

(b) Rotate the flow thread knob counterclockwise downwards to increase the amount and thickness of paint









A. Reduce Flow Rate



B. Increase Flow Rate

8. Adjusting the spraying patterns

(1) When the spraying nozzle is vertical , the side threaded knob "+" sign is at the top , the sprayed pattern is a horizontal oval shape; When the "+" sign rotates to the bottom , the sprayed pattern is circular shape.

(2) When the spraying nozzle is horizontal  , the side threaded knob “+” sign is at the top  , the sprayed pattern is a vertical oval shape; When the “+” sign rotates to the bottom  , the sprayed pattern is circular shape.

9. Pull trigger, the paint will spray from the nozzle

Trouble Shooting

Problem	Cause	Solution
A. Little or no fluid flow	<ol style="list-style-type: none"> 1. Nozzle clogged 2. Suction tube clogged 3. Fluid flow setting too low 4. Suction tube loose 5. Fluid is too thick 6. Inconsistent paint 7. Cup is loose 	<ol style="list-style-type: none"> 1. Clean 2. Clean 3. Rotate the flow knob to increase fluid flow 4. Insert 5. Dilute paint 6. Strain paint 7. Tighten the cup
B. Fluid leaking	<ol style="list-style-type: none"> 1. Nozzle loose 2. Nozzle worn 3. Nozzle seal worn 4. Fluid build-up on spray pattern dial and nozzle 	<ol style="list-style-type: none"> 1. Tighten 2. Replace 3. Replace 4. Clean
C. Atomization is too coarse	<ol style="list-style-type: none"> 1. Viscosity of fluid is too high 2. Fluid flow setting too large 3. Nozzle clogged 4. Too little pressure build-up in cup 	<ol style="list-style-type: none"> 1. Dilute paint 2. Rotate the flow knob to reduce fluid flow 3. Clean 4. Tighten container
D. Spray jet pulsates	<ol style="list-style-type: none"> 1. Fluid in cup running out 2. Fluid is too thick 	<ol style="list-style-type: none"> 1. Refill 2. Dilute paint
E. Pattern runs or sags	<ol style="list-style-type: none"> 1. Applying too much fluid 	<ol style="list-style-type: none"> 1. Adjust fluid flow or increase movement of paint sprayer
F. Too much overspray	<ol style="list-style-type: none"> 1. Sprayer is too far from spray object 2. Too much fluid applied 	<ol style="list-style-type: none"> 1. Reduce distance 2. Rotate the flow knob to reduce fluid flow
G. Pattern is very light and splotchy	<ol style="list-style-type: none"> 1. Moving the paint sprayer too fast 	<ol style="list-style-type: none"> 1. Adjust fluid flow or decrease movement of paint sprayer
H. Large cloud of paint	<ol style="list-style-type: none"> 1. Sprayer too close to surface 	<ol style="list-style-type: none"> 1. Move sprayer away from surface and reduce paint flow

Warning

1. Keep your workplace clean and tidy, never use the tool in hazardous areas that contain flammable liquids, gasses or dusts
2. Only use paints, solvents or other fluid with a flash point of 73°F(22°C) or higher.
3. Never point the paint sprayer at other person or animal, in the event of an injury, seek immediate medical attention.


- 4. Always read the paint manufacturer’s thinning instructions before use.
- 5. You must clean the paint sprayer thoroughly after each use.

Warranty

For cordless paint sprayer main part, we offer 90 day returns and refunds, 12 month returns and exchanges, and 7×24 hour quick response customer service. If you have any questions, please contact us via your order or email us wangmi20140508@163.com, we will be always here for you!

WANGMI

Documents / Resources

	<p>WANGMI PSBD-CS021DB Cordless Paint Sprayer [pdf] User Manual PSBD-CS021DB Cordless Paint Sprayer, PSBD-CS021DB, Cordless Paint Sprayer, Paint Sprayer, Sprayer</p>
--	---

References

- [User Manual](#)