

**Walmart**  
**CB24C Besttley**  
**Countertop**  
**Portable Ice**  
**Maker**



# Walmart CB24C Besttley Countertop Portable Ice Maker Instruction Manual

[Home](#) » [Walmart](#) » Walmart CB24C Besttley Countertop Portable Ice Maker Instruction Manual 

## Contents

- 1 Walmart CB24C Besttley Countertop Portable Ice Maker
- 2 IMPORTANT SAFETY INFORMATION
- 3 PRODUCT INTRODUCTION
- 4 USING YOUR ICE MAKER
- 5 CLEANING AND MAINTENANCE
- 6 PRODUCT SPECIFICATIONS
- 7 TROUBLESHOOTING
- 8 CONTACT
- 9 Documents / Resources
  - 9.1 References
- 10 Related Posts






**Walmart CB24C Besttley Countertop Portable Ice Maker**



## IMPORTANT SAFETY INFORMATION

To reduce the risk of injury or property damage, please follow these safety precautions.

### WARNING

-  Voltage power from outlet must match specifications on appliance nameplate.
-  This appliance must be grounded.
-  Using an extension cord may cause overheating and increase the risk of fire.
- If an extension cord **MUST** be used:
  1. Only use an extension cord with grounding plug.
  2. The marked rating of an extension cord must be equal to or greater than the rating of this appliance.
- Do not operate if any component, including the cord or plug, is damaged.
- Unplug the unit before cleaning by hand.
- Only responsible and capable adults should operate the ice maker.
- Do not place the power cord where it could be pulled by children or pose a tripping hazard.
- Children should not be left unattended near the ice maker during operation.
- Do not use water that is micro-biologically unsafe or of unknown quality.
- Do not remove any safety, warning, or product information labels from the unit.
- Do not touch the evaporator with your hands while the ice maker is operating.
- Do not plug in or unplug the unit with wet hands.

- The unit must be placed and set up according to installation instructions before use. The unit is for indoor household use only.
- Do not store or use flammable vapors or liquids near the unit.
- Do not immerse any part of the unit in water.
- Do not attempt to disassemble, repair, modify or replace any part of the ice maker unless permitted by the manufacturer.

**WARNING: FIRE OR EXPLOSION HAZARD Flammable Refrigerant**

This unit contains an isobutane refrigerant, also known as R600a, a natural gas with high environmental compatibility. However, it is also combustible. Adhere to the warnings below to reduce the risk of injury or property damage.

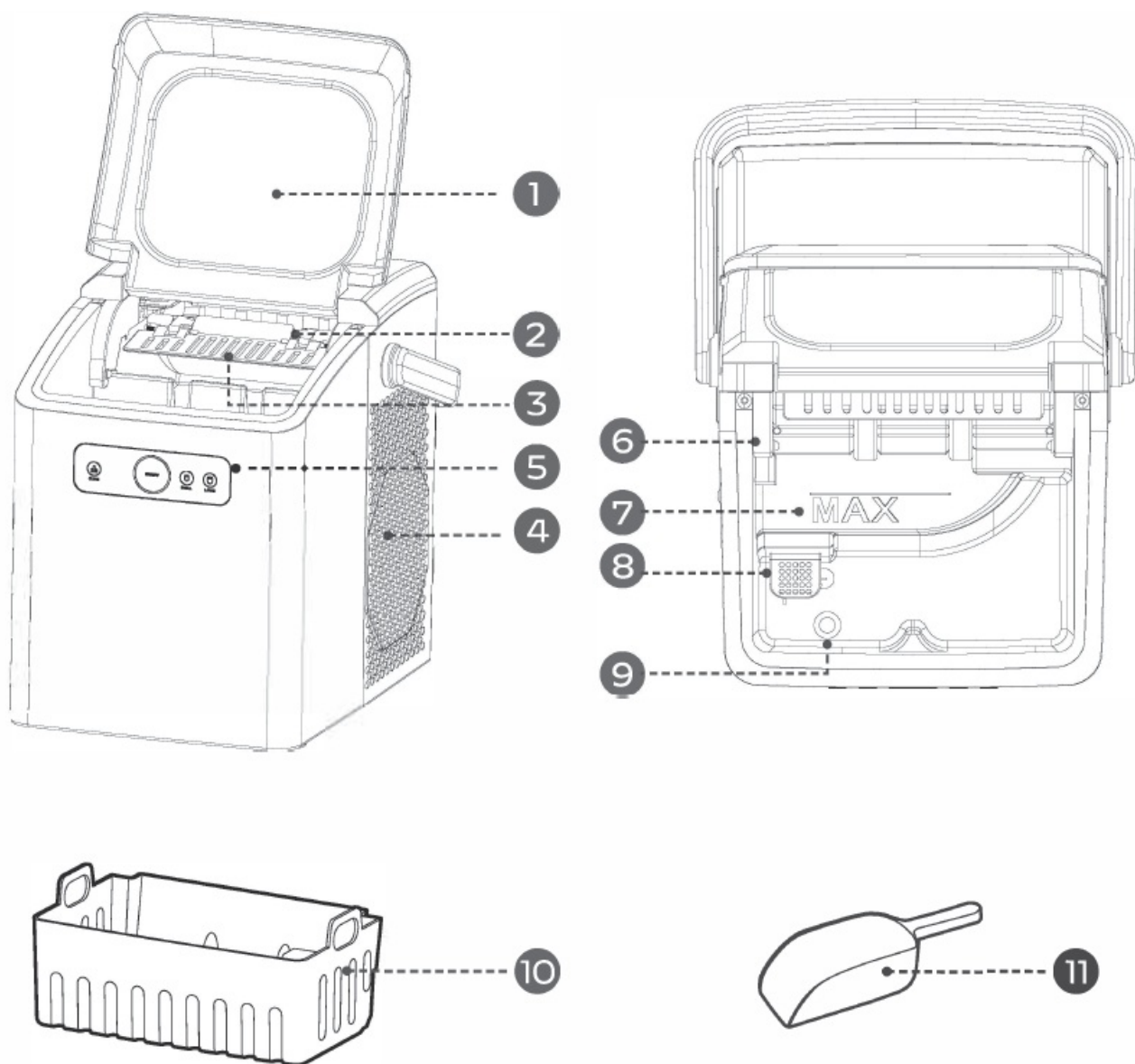
1. When handling, installing, and operating the unit, care should be taken to avoid damage to the refrigerant tubing.
2. Only dispose of the unit according to Federal and Local Regulations. Contact your local authorities for the environmentally safe disposal of the unit.
3. Keep ventilation openings around the unit's enclosure clear of obstruction.
4. Do not place the unit near heat sources such as an oven.
5. Ensure a minimum of three inches of clearance around the side and back walls of the unit for proper air circulation.
6. Do not place the unit in direct sunlight.

**ATTENTION**

- To avoid potential internal damage, please rest the ICE MAKER upright for 24 hours before plugging it in. It is an important procedure for producing great ice.

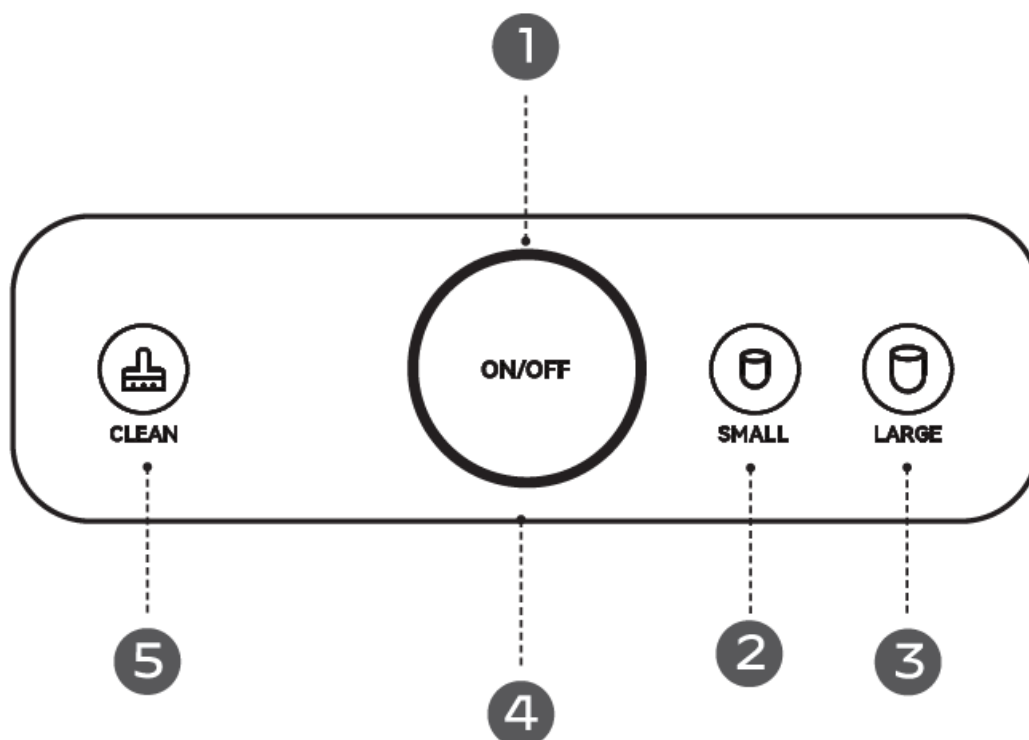
**DANGER: RISK of Fire or Explosion. Flammable Refrigerant Used. Do Not Use Mechanical Devices to Defrost Ice Maker. Do Not Puncture Refrigerant Tubing.**

**PRODUCT INTRODUCTION**



1. Large Viewing Window
2. Evaporator
3. Ice Shovel
4. Air Exhaust Fan
5. Control Panel
6. Ice Full Sensor
7. Maximum Water Fill Line
8. Filter
9. Drain Plug
10. Ice Basket
11. Ice Scoop

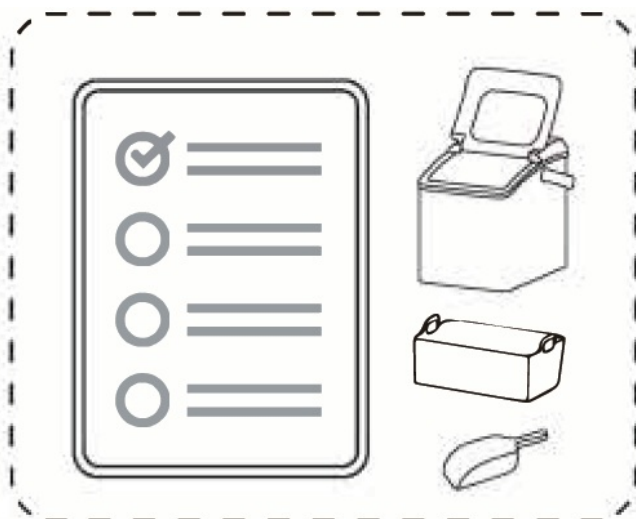
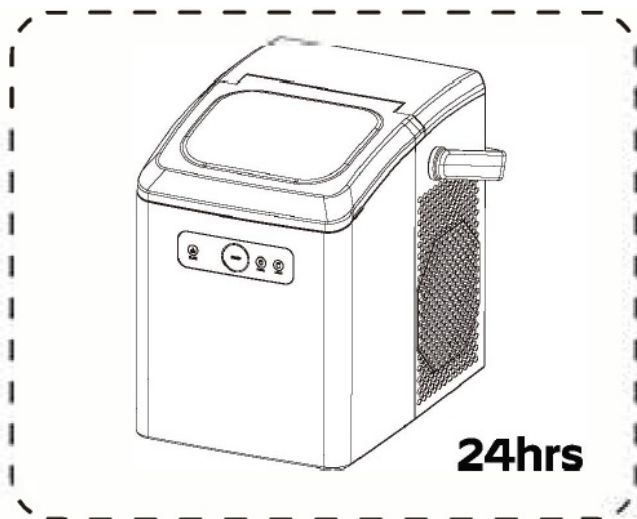
## CONTROL PANEL INTRODUCTION



	Key (with Indicator)	Function
1	ADD WATER	The indicator light ring turns red when the water level in the reservoir is too low.
1	ICE FULL	The indicator light ring turns green when the ice basket is full.
2	SMALL	Press the SMALL button small ice mode is selected.
3	LARGE	Press the LARGE button large ice mode is selected.
4	ON/OFF	Press the <b>ON/OFF</b> button to turn the ice maker on.
		Press the <b>ON/OFF</b> button to turn the ice maker off.
5	CLEAN	Press the CLEAN button to start self-cleaning mode

## USING YOUR ICE MAKER

### BEFORE FIRST USE



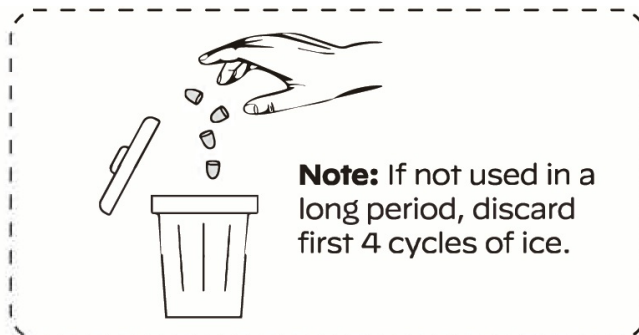
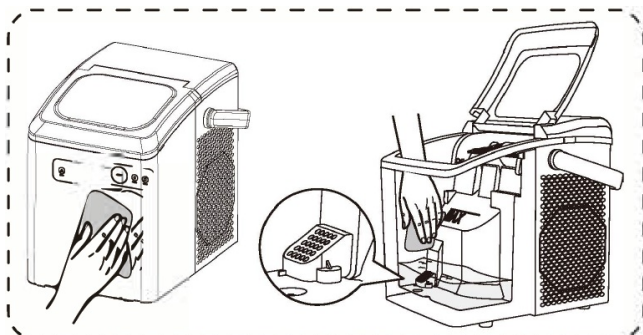
1. Stand upright for 24hrs.
2. Check for accessories.

### Missing parts?

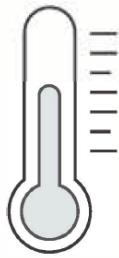
Contact us.



- Clean the ice maker thoroughly before first use
- Discard first 4 cycles of ice.

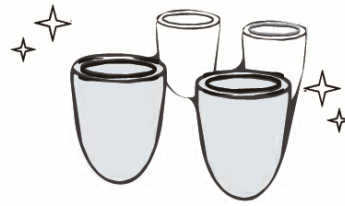


- Use in locations of 50°F ~ 90°F.
- Perfect ice shape.



**50°F ~ 90°F**  
(10°C ~ 32°C)

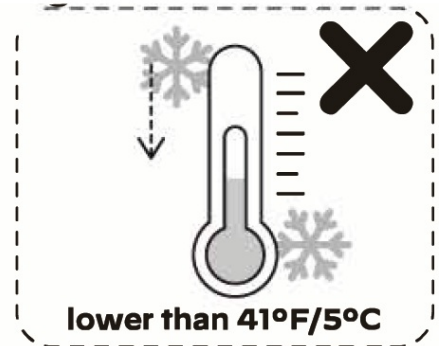
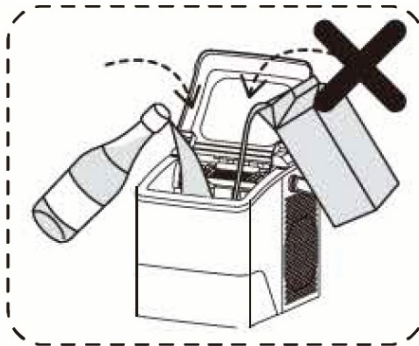
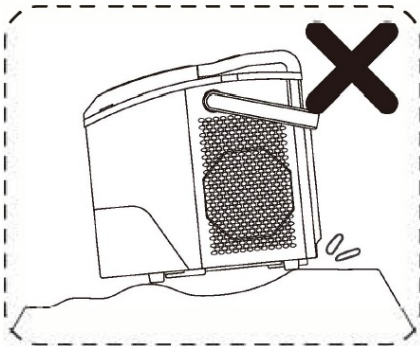
### More Cycles = Perfect Shape



Due to temperature variations and other factors, ice quality should become stable after the first 1-3 cycles.

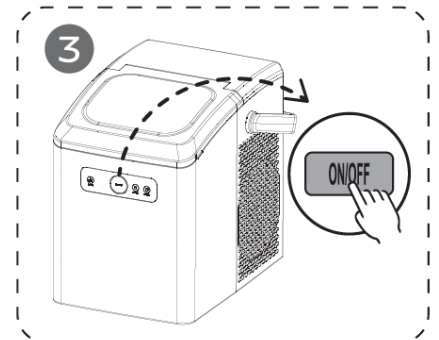
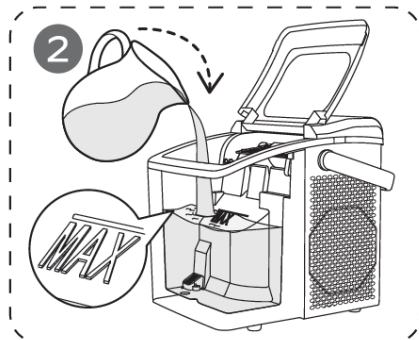
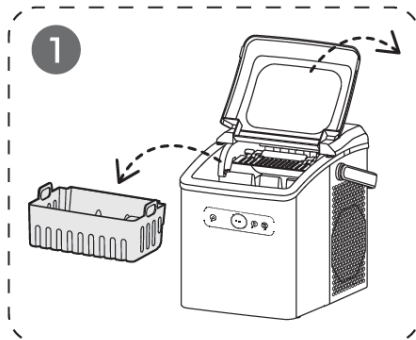
### What Not To Do!

- Unstable base.
- No other liquids (Drinking water only).
- Do not use in the too high or low temps.

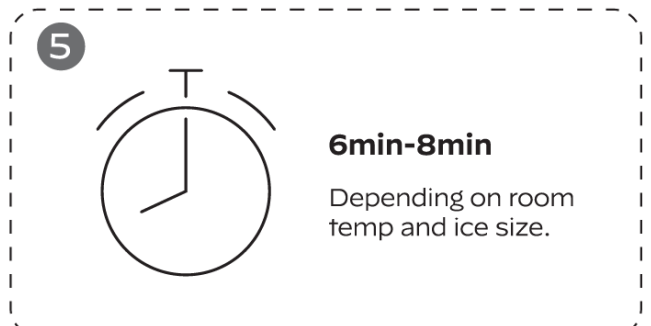
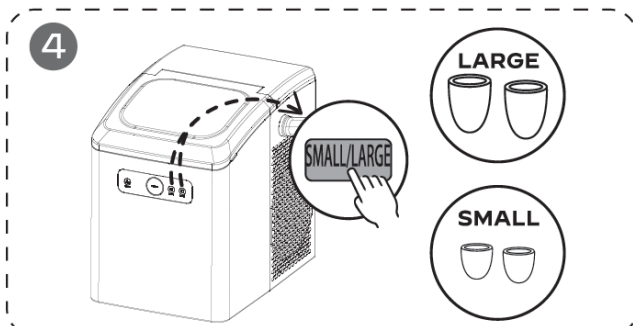


**lower than 41°F/5°C**

### HOW TO USE YOUR ICE MAKER



- Open cover and remove basket.
- Pour water, do not exceed the "MAX" water mark.
- Press the ON/OFF button.



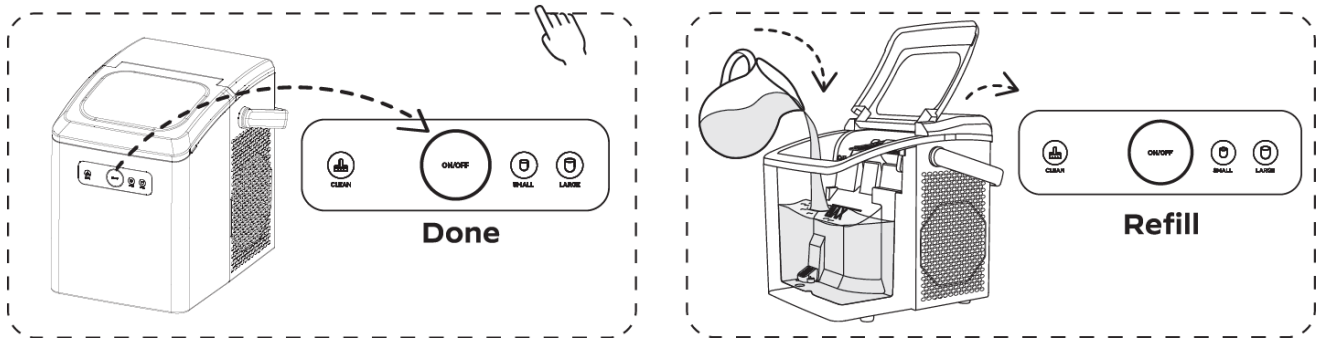
**6min-8min**

Depending on room temp and ice size.

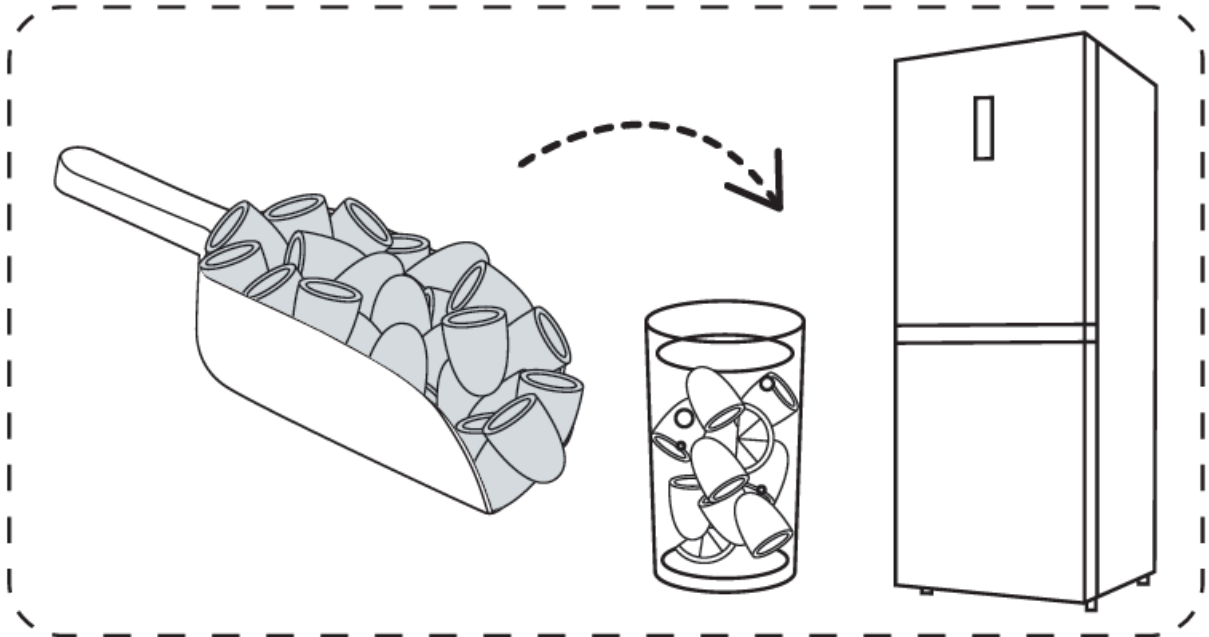
- Press SMALL/LARGE button to choose ice cube size.



- Wait 6min-8min.



- Ice full and ready when indicator light ring turns red.
- When indicator light ring is green, add water and press ON/OFF button.



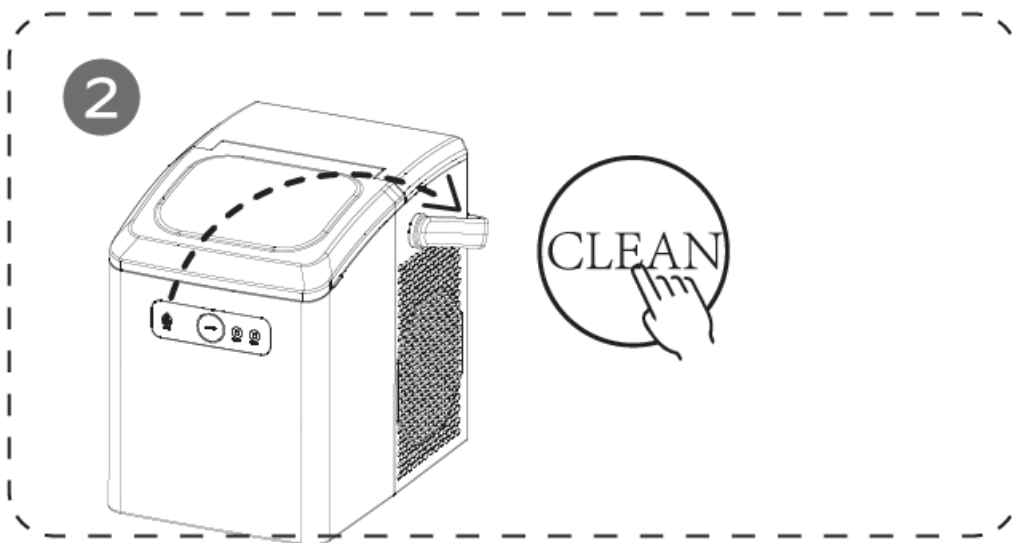
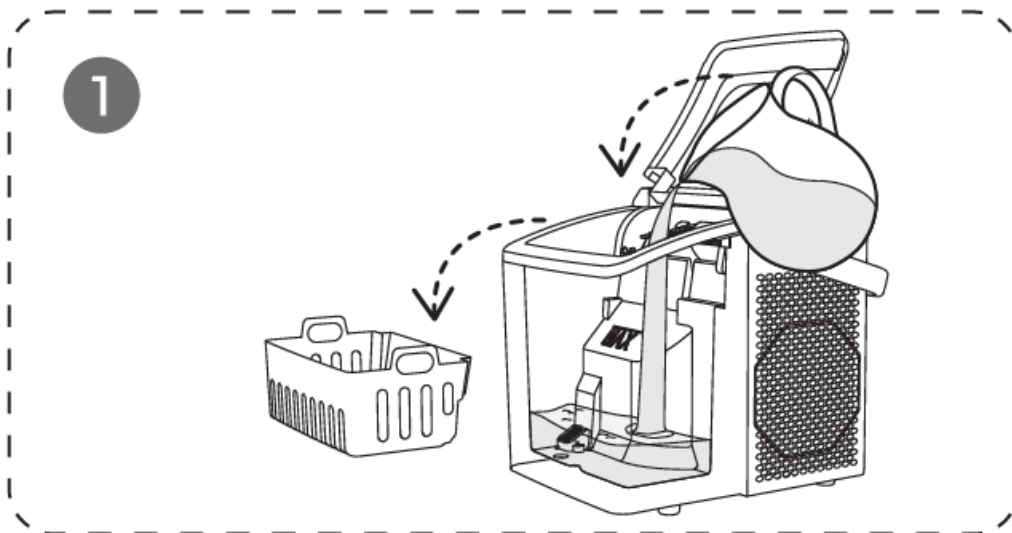
- Take ice cubes out in time to avoid melting.

## CLEANING AND MAINTENANCE

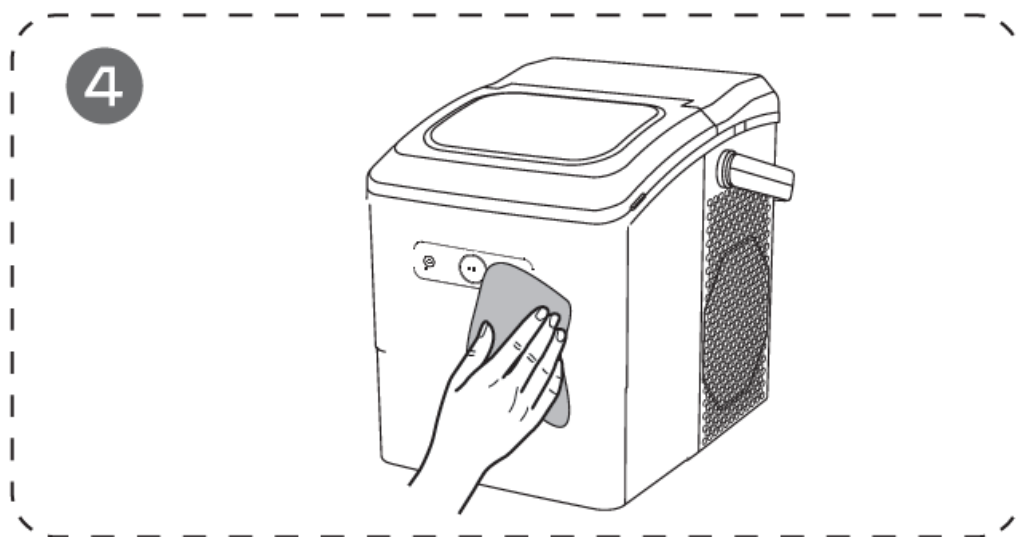
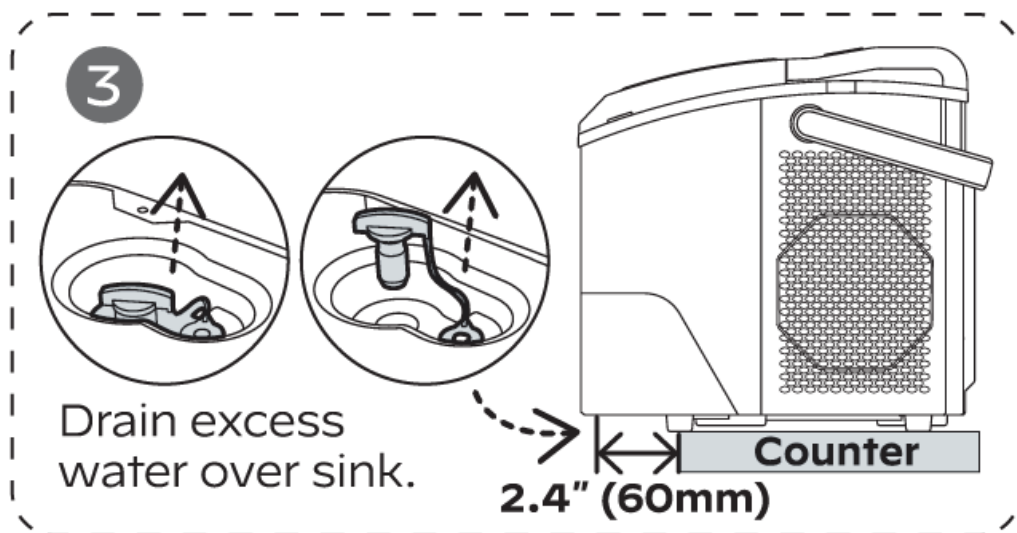
To keep your ice tasting fresh and the unit looking great, we recommend cleaning the unit once per week.

### SELF-CLEANING (15-MIN PROCESS)





1. Remove the basket and add water.
2. Press CLEAN button to start self-cleaning.

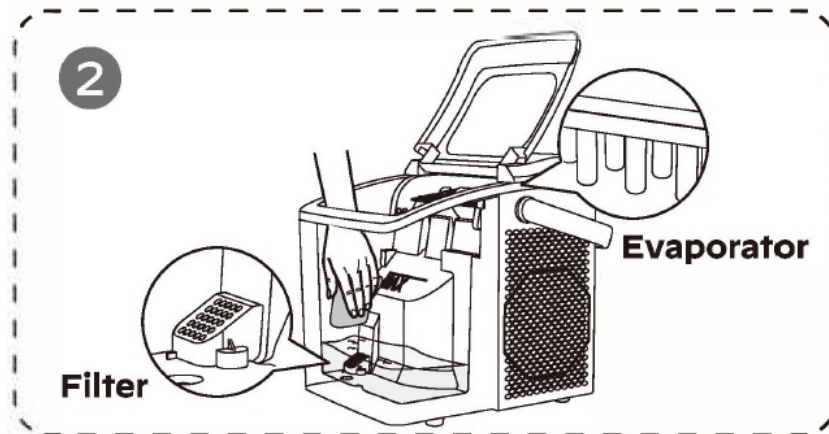
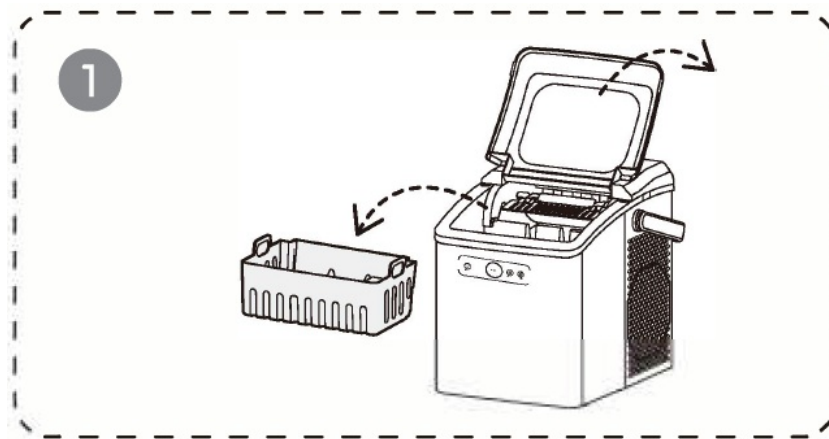


3. Drain water reservoir.

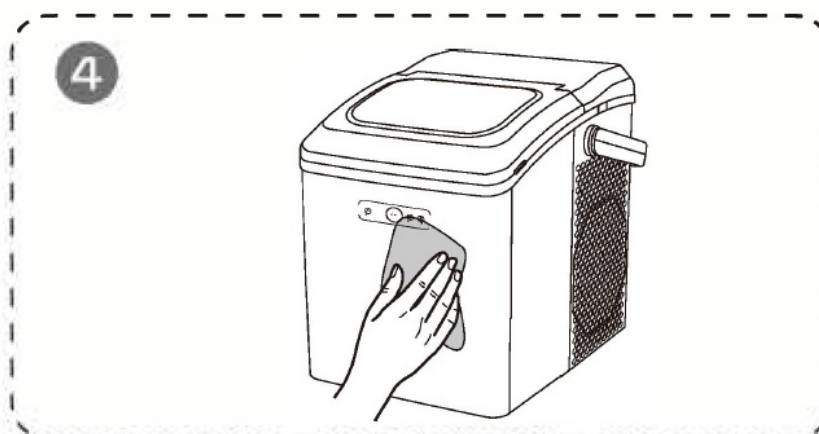
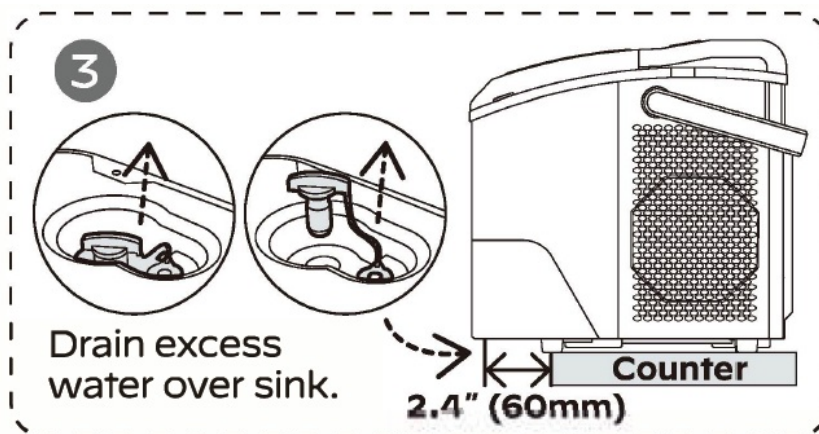
4. Clean exterior with cloth and mild dishwashing soap.

## MANUAL CLEANING

Turn off the unit and disconnect it from power outlet before cleaning.



1. Remove the basket.
2. Clean it by a soft cloth with warm water and vinegar. Clean the water filter, ice shovel and the evaporator to avoid dirt buildup.



3. Drain water in the reservoir.

4. Clean the exterior with a cloth and mild dishwashing soap.

#### **DO's & DON'Ts while cleaning and maintaining**

- Do not use organic solvent, boiled water, detergent, strong acid or strong alkali etc. for cleaning.
- When the unit is not to be used for a long duration, drain the water completely & dry the interior.
- Store it in a well-ventilated area.

#### **PRODUCT SPECIFICATIONS**

<b>Model</b>	CB24C
<b>Voltage/Frequency</b>	120V/60Hz
<b>Ice-Making Current</b>	1.5A
<b>Ice-Harvesting Current</b>	2A
<b>Water Reservoir</b>	1.0L
<b>Ice Basket Capacity</b>	0.8L
<b>Ice-Making Rate</b>	261bs per Day
<b>Ice Shape</b>	Bullet
<b>Ice Size</b>	Small or Large
<b>Material</b>	ABS, PP
<b>Net Weight</b>	13.2lbs (6kg)
<b>Product Size</b>	282 x 205 x 269 mm 11.1 x 8.07 x 10.59 inch

#### **TROUBLESHOOTING**

Problem	Possible Causes	Solution
<b>Poor ice shape or quality.</b>	Poor heat dissipation.	Leave a 6-inch clearance on all sides of the ice maker for ventilation.
	The water temperature is too high.	Fill with water temperature between 46°F and 77°F.
	The ambient temperature is too high.	Use the ice maker at room temperatures between 50°F and 90°F.
	Evaporator deformation.	Please contact customer service.
<b>Ice maker creating loud noise.</b>	Ice maker has not been cleaned for a long time, which will form a sticky substance around the inlet of the water pump.	Clean every 1 to 2 weeks, using some neutral cleaning agents (such as mild vinegar solution and soapy water etc.)
	The unit will make a noise if there is not enough water when it is trying to pump.	Add more water.
	Fan or ice maker is damaged.	Please contact customer service.
	The water pump is damaged.	

<b>“ICE FULL” light is on.</b>	Ice is blocking the infrared sensor.	Empty the ice basket.
	Infrared sensors do not work.	1 . Wipe the infrared sensors clean. 2. Contact customer service if the infrared sensors still don't work.
<b>Ice sticks together.</b>	Making ice takes too long.	Stop making ice. After the ice melts, restart and try again.
	The water temperature is too low.	Fill with water temperature between 46°F and 77°F.
	Evaporator deformation.	Please contact customer service.
<b>Not making ice.</b>	Ambient or water temperature is too high.	Keep ambient temperature less than 90°F and fill with cold water.
	Water pump is damaged.	Please contact the customer service.
	Refrigerating system leaking.	
	Refrigerating system is blocked.	
	The fan stopped working.	
	The wires are loose.	
	The gears in the motor are broken.	

<b>“ADD WATER” indicator light is on.</b>	Low water level or more water is needed.	Stop making ice, refill water, press <b>ON/OFF</b> button, then restart and try again.
	Water screen is blocked at the bottom of the water reservoir.	Run the self-cleaning cycle.
	Pump malfunction.	Please contact customer service.
	Water sensor malfunction.	Power off for 2 minutes , then restart the machine.

Thank you for purchasing this product! If you have any questions about the product, such as missing parts, damaged products, product assembling, and operation, please contact us via Amazon Message or customer service number: 213-4467172 or 661-4358826.

## CONTACT

## IMPORTANT


Please call our customer service department for any consulting:

- 213-4467172
- 661-4358826
- (8:30am – 5:30pm P.S. T.)

DATED PROOF OF PURCHASE IS REQUIRED FOR WARRANTY SERVICE.

- **Address:** ROWAN ELECTRIC APPLIANCE LLC 28407 Ascent Way, Santa Clarita, CA 91350
- **Phone:** 213-4467172 or 661-4358826

## Documents / Resources

 <p>INSTRUCTION MANUAL</p> <p>Ice Maker</p> <p>MODEL NO.: CB24C</p> <p>ITEM NO.: 228407 WHITE 228407 BLACK</p>	<p><a href="#">Walmart CB24C Bestley Countertop Portable Ice Maker</a> [pdf] Instruction Manual CB24C Bestley Countertop Portable Ice Maker, CB24C, Bestley Countertop Portable Ice Maker, Countertop Portable Ice Maker, Portable Ice Maker, Ice Maker, Maker</p>
---	--

## References

- [User Manual](#)

[Manuals+](#), [Privacy Policy](#)

This website is an independent publication and is neither affiliated with nor endorsed by any of the trademark owners. The "Bluetooth®" word mark and logos are registered trademarks owned by Bluetooth SIG, Inc. The "Wi-Fi®" word mark and logos are registered trademarks owned by the Wi-Fi Alliance. Any use of these marks on this website does not imply any affiliation with or endorsement.