



Wallystech Wallys AP Controller Software User Guide

[Home](#) » [Wallystech](#) » Wallystech Wallys AP Controller Software User Guide 




Wallystech AP Controller User Manual



Wallystech AP Controller Hardware-Based Wired and Wireless Device Network Controller

Industrial AP
Local Controller


Keep It Local,
Keep It Secure



WALLYS
TECH

<https://www.wallystech.com/>

Manage Your Network Securely and Effortlessly



The software interface displays various network metrics, including status indicators for wired and wireless connections, and several charts showing network performance over time.

Contents

1 Section I Getting Started

2 Section II Configuration

3 Documents / Resources

3.1 References

Section I Getting Started

This section provides an overview of the Wallys AP Controller software and describes the initial steps required to start using the service.

Chapter 1 | Introduction

Wallys AP Controller Login

The Wallys AP Controller is a hardware-based network solution tailored for efficiently configuring multiple access points through a web browser interface. With its robust scalability, it supports the management of unlimited networks and devices.

By integrating network management and wireless controller functionalities, it allows Wallystech access points (APs) to seamlessly connect and operate as a unified network.

The following devices are supported by Wallys AP Controller:

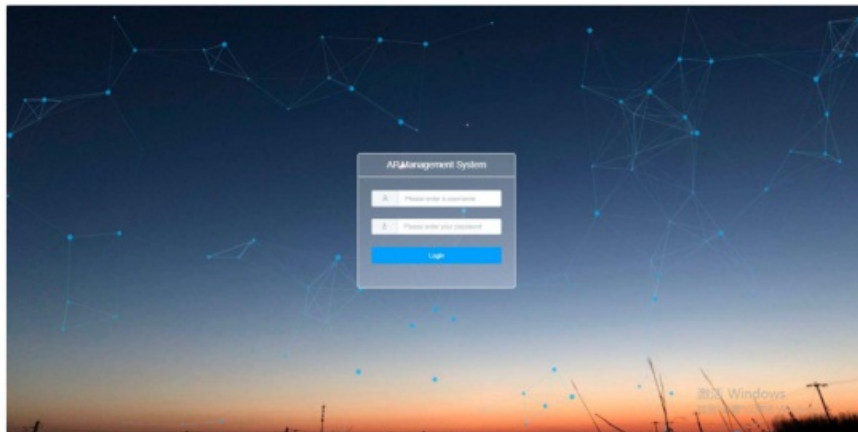
Wallys APs: DR5018,DR5018S,DR6018,DR6018S,DR6018C

Wallys AP Controller Login

From a web browser, go to 192.168.1.1 to login.

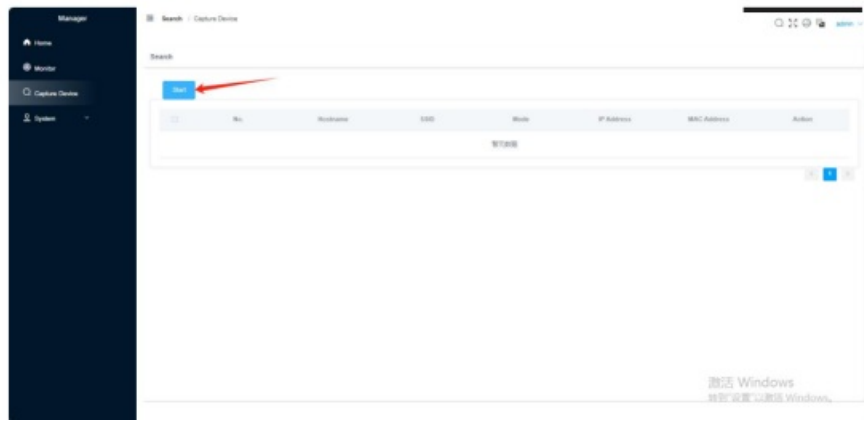
Default User Name: admin

Default Password: 123456

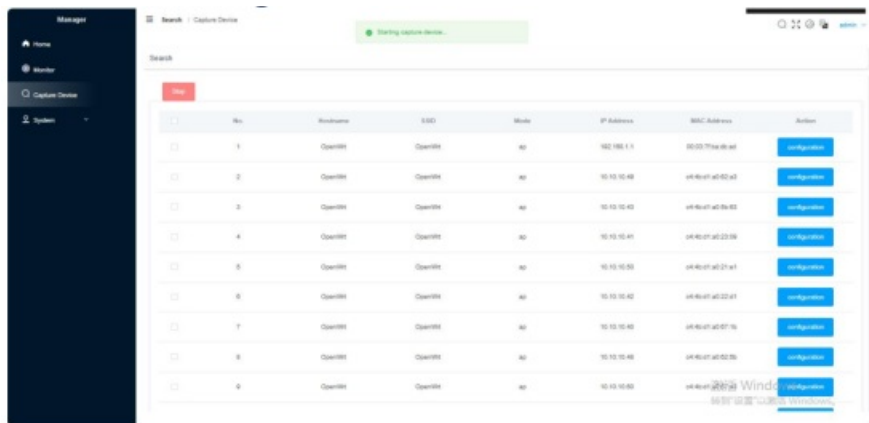


Capture APs

Adding Devices(Capture APs)



Device Management View

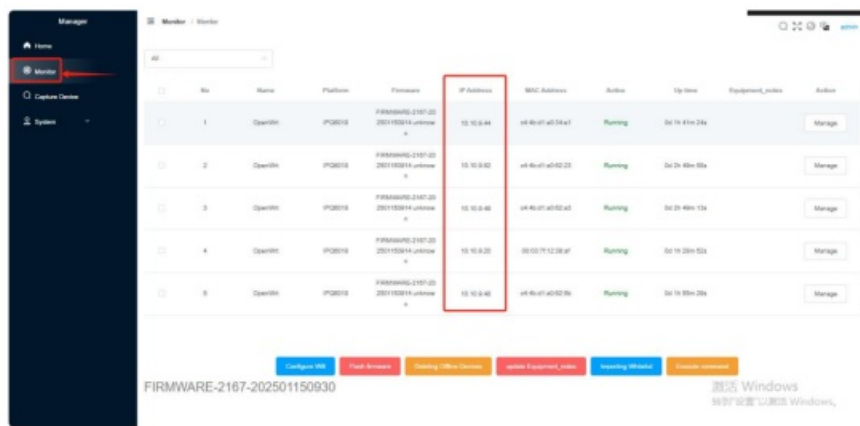


Adding Devices

Adding Devices Warning Message

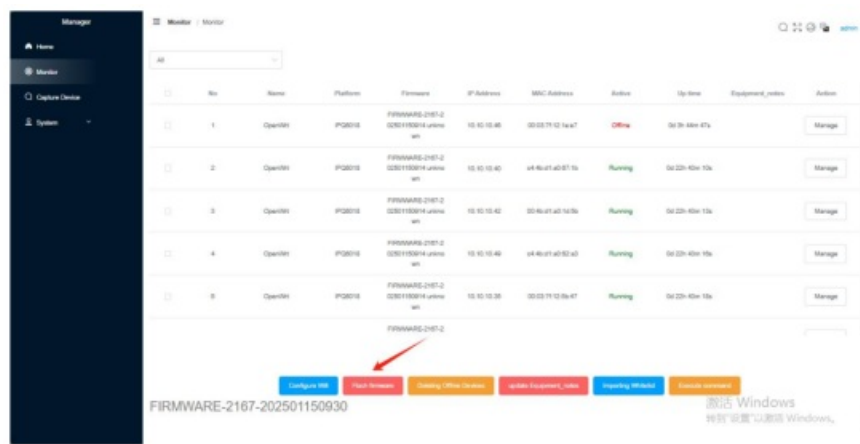


Adding Devices Successful Message

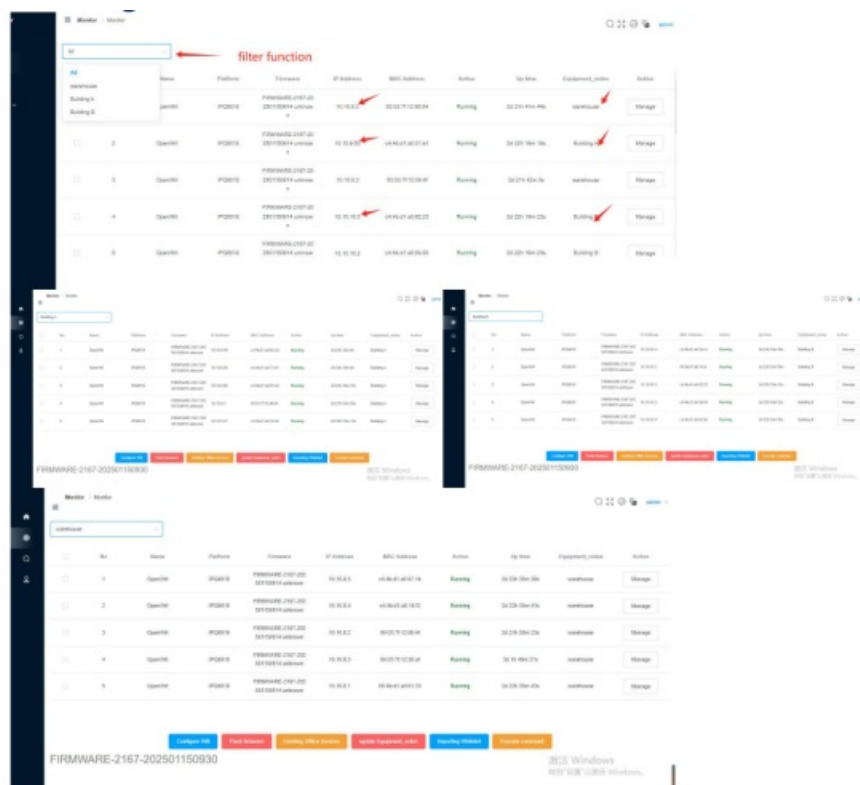


Firmware Upgrade & Filtering

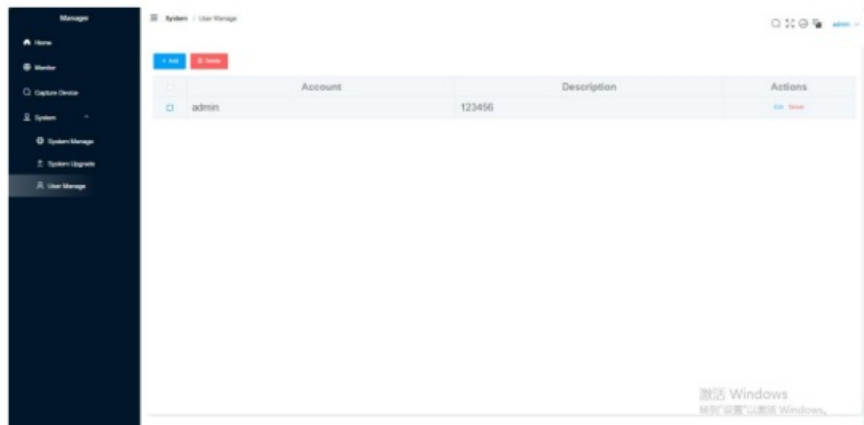
Firmware Upgrade Button



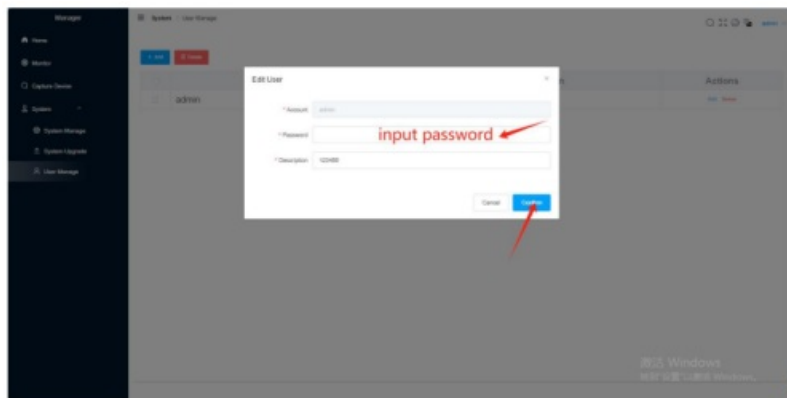
Filtering the Device View



Change Default Password

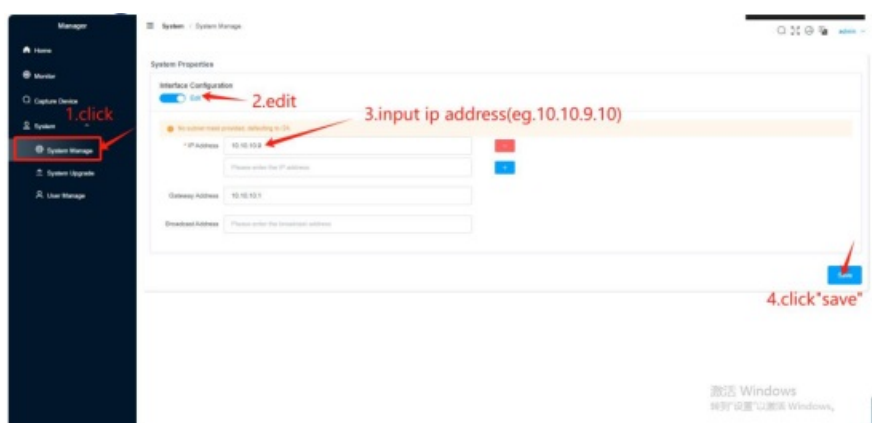


Change Default Password Successful



After New Password Applied,the webpage will auto turn to Home page.

Change Default AP Controller IP Address

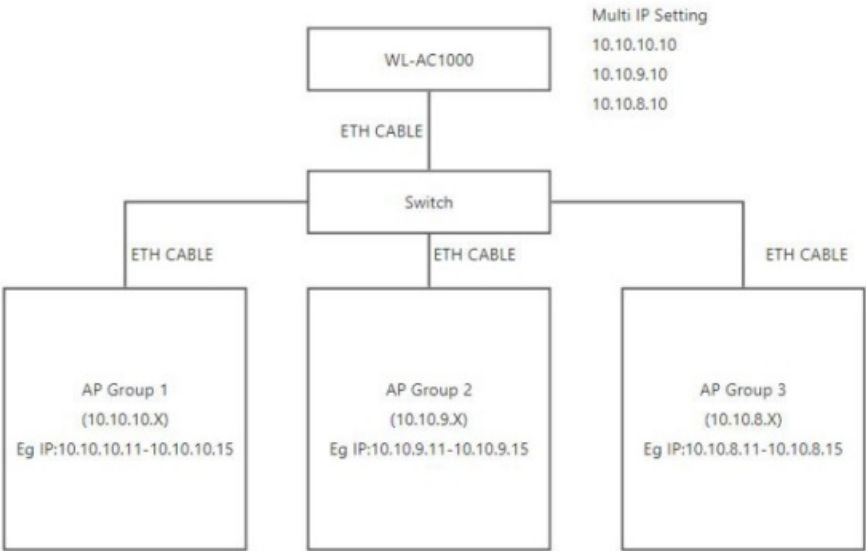


Change Default IP Address Successful

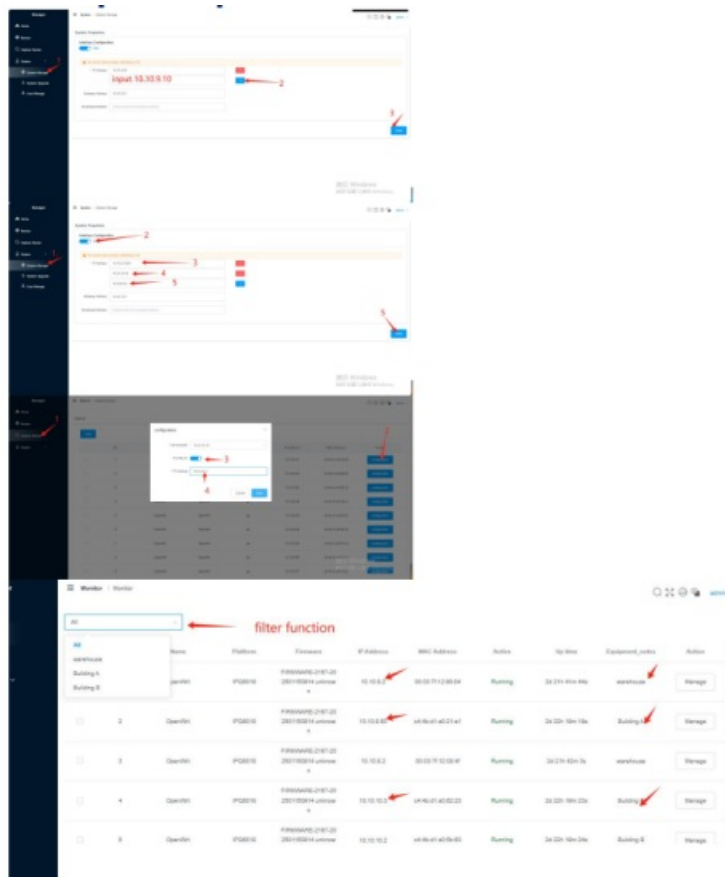


After New IP address Applied,the webpage will auto turn to Home page.

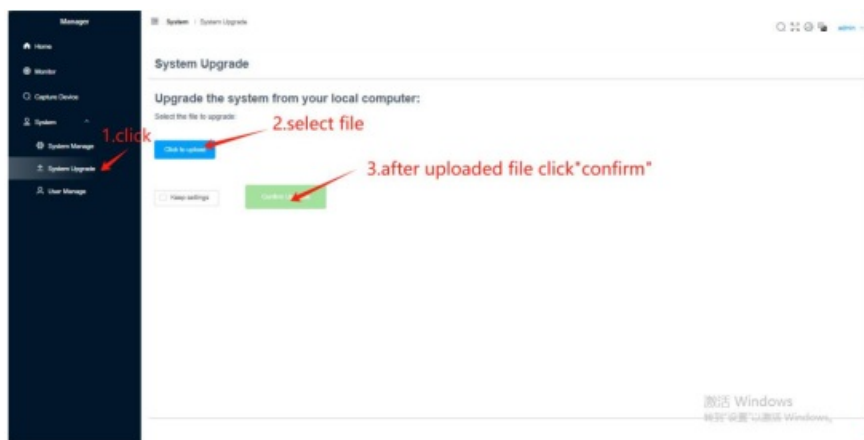
Set Up Multiple IP Addresses Across Different Network Segments
Function Diagram



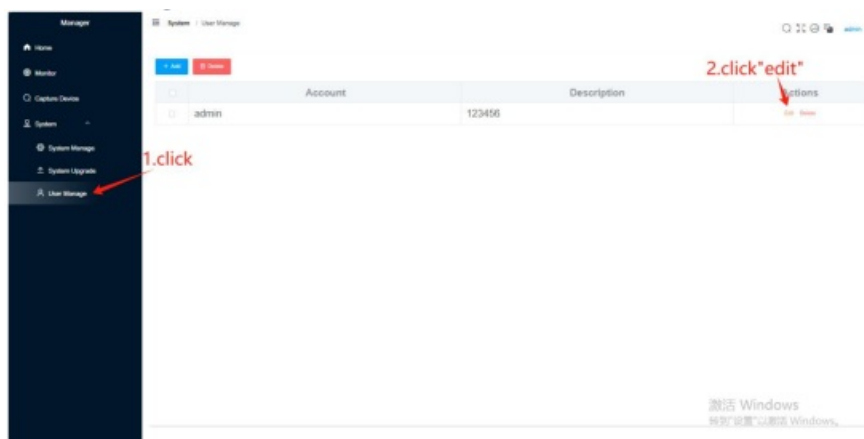
Set Up Multiple IP Address Successful



System Upgrade



User Manage



Section II Configuration

This section provides details on configuring access point settings.

The Dashboard

The dashboard provides an overview of status for configured devices, recent activity information overview.



Monitor

The Monitor screen displays a list of configured devices, including their status, IP addresses, and MAC addresses. The table below shows the data for five devices:

No.	Name	Platform	Firmware	IP Address	MAC Address	Action	Up time	Equipment_model	Action
1	OpenWRT	PO8016	FIRMWARE-2167-2 2025110314-unlink apk	10.10.10.48	00:03:71:12:1a47	Offline	0d 3h 48m 47s		Manage
2	OpenWRT	PO8016	FIRMWARE-2167-2 2025110314-unlink apk	10.10.10.40	04:46:01:40:07:16	Running	0d 22h 45m 15s		Manage
3	OpenWRT	PO8016	FIRMWARE-2167-2 2025110314-unlink apk	10.10.10.42	00:46:01:40:10:16	Running	0d 22h 45m 15s		Manage
4	OpenWRT	PO8016	FIRMWARE-2167-2 2025110314-unlink apk	10.10.10.48	04:46:01:40:02:43	Running	0d 22h 45m 15s		Manage
5	OpenWRT	PO8016	FIRMWARE-2167-2 2025110314-unlink apk	10.10.10.38	00:03:71:12:1a47	Running	0d 22h 45m 15s		Manage

Below the table, there are buttons for **Configure WAP**, **Flash Firmware**, **Linking Office Device**, **Update Equipment Model**, **Exporting WAPs**, and **Device Connected**. The firmware version is noted as FIRMWARE-2167-202501150930.

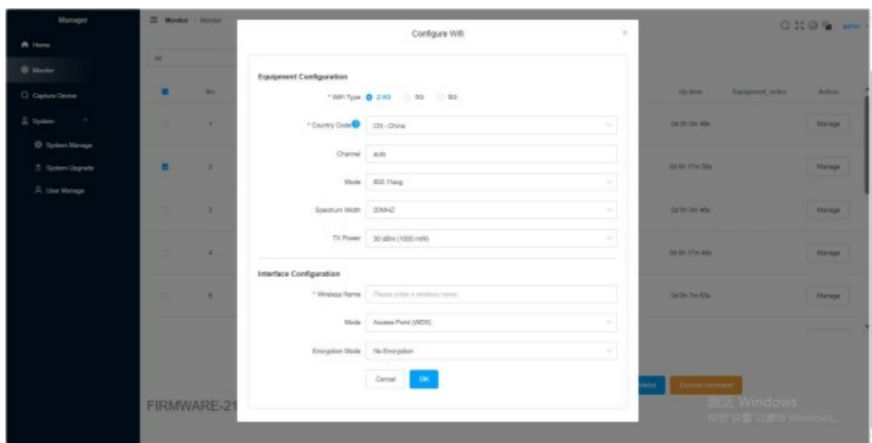
Configure WiFi in Batch

The Monitor screen is annotated with red text and arrows to guide the user through the batch configuration process:

- 1.click*monitor***: Points to the Monitor button in the left sidebar.
- 2.select devices**: Points to the checkboxes next to the device names in the table.
- 3.click* configure wifi***: Points to the **Configure WAP** button at the bottom.

The table and buttons are identical to the previous screenshot, showing the list of devices and the configuration options.

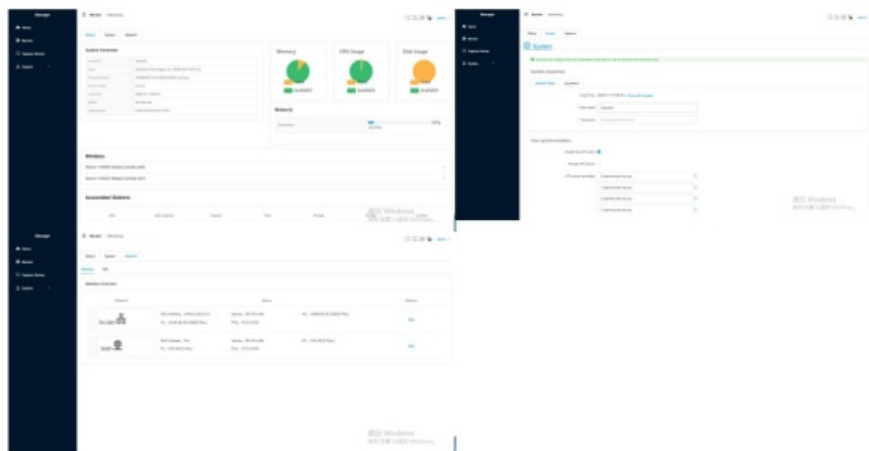
Configure WiFi



Upgrading Device Firmware

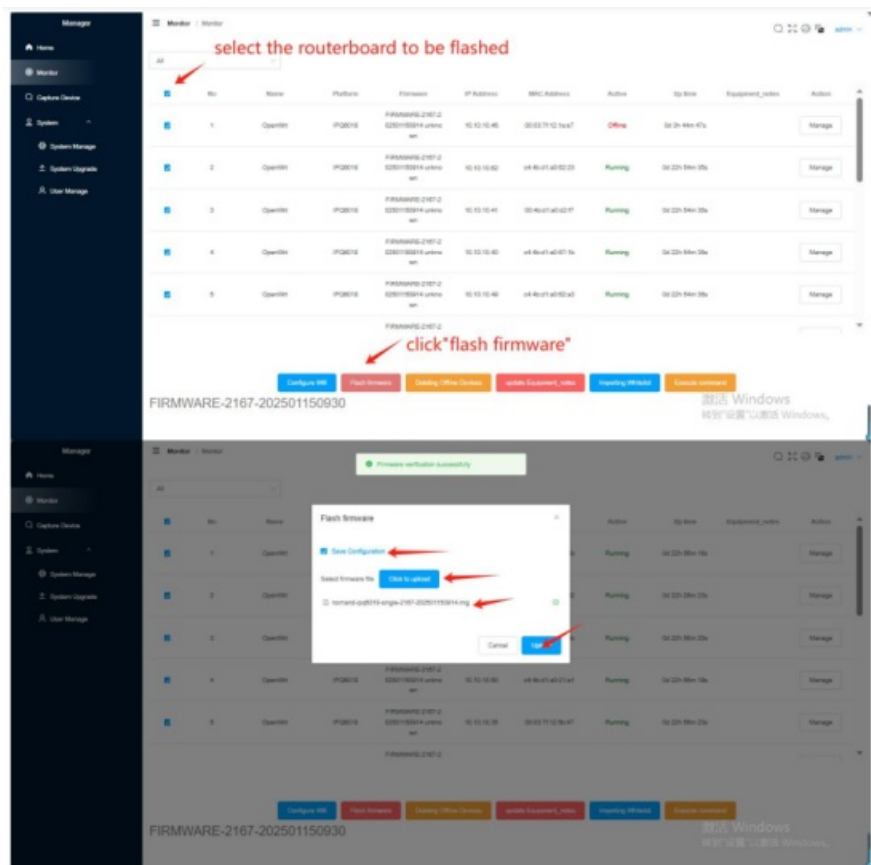
Viewing Device Information

Click a device name link in the Name column to access the detailed device information.



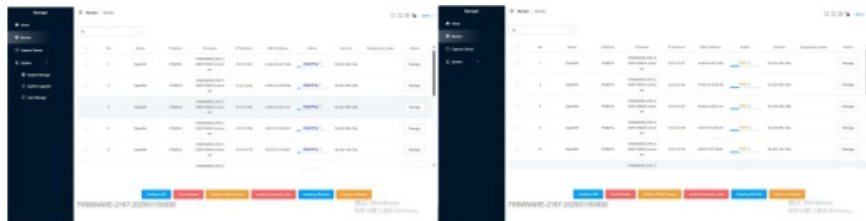
Upgrading Device Firmware

Click the upgrade icon in the FW column when new firmware is available for a device.



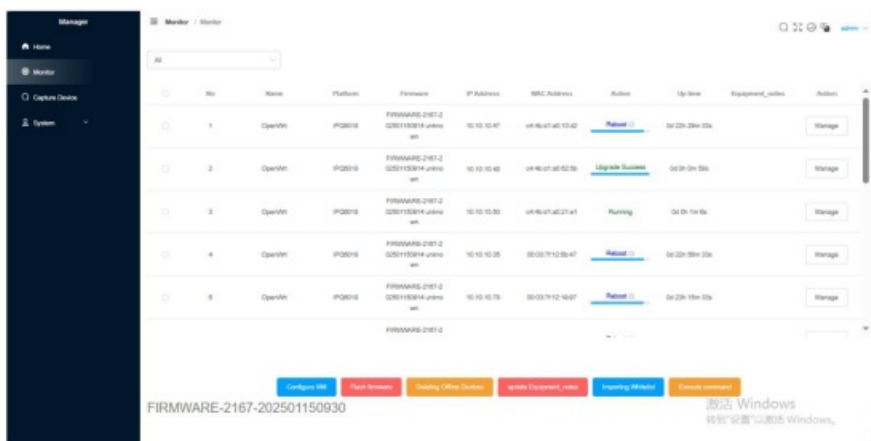
Note: check the box “save configuration” if need to keep the configuration remain.

New FW Upgrading process

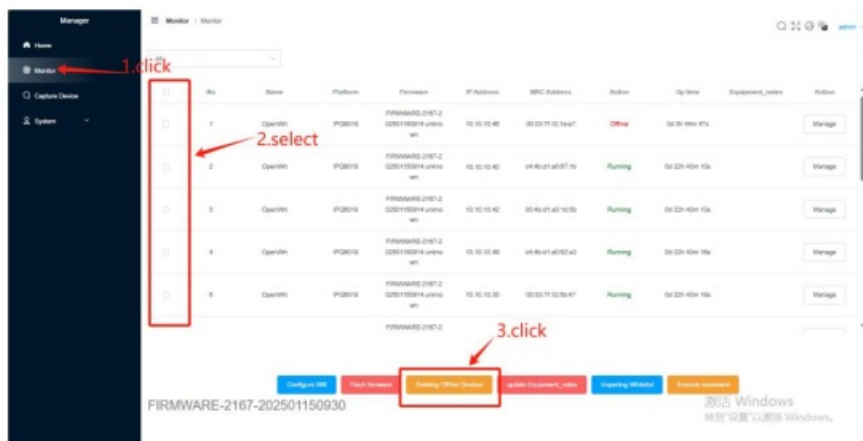


Upgrading Device Firmware Successful

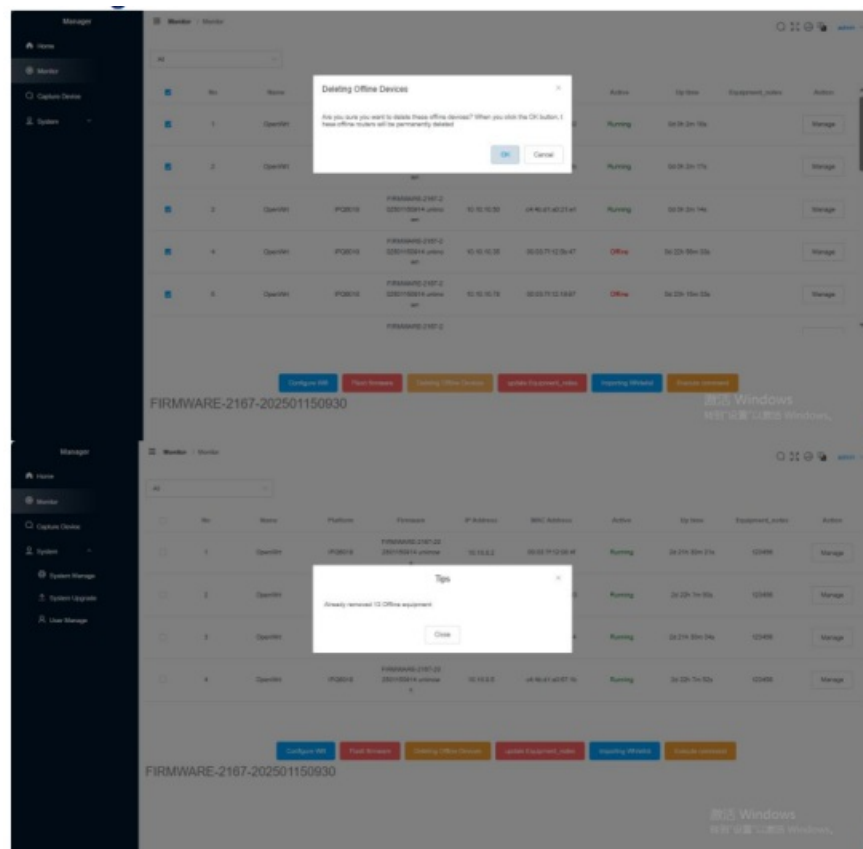
Active: running-upgrading-flashing-upgrade success-running



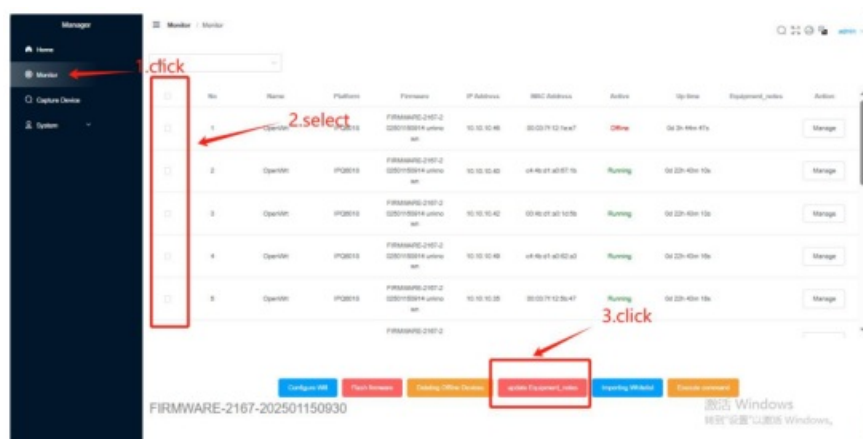
Deleting Offline Devices



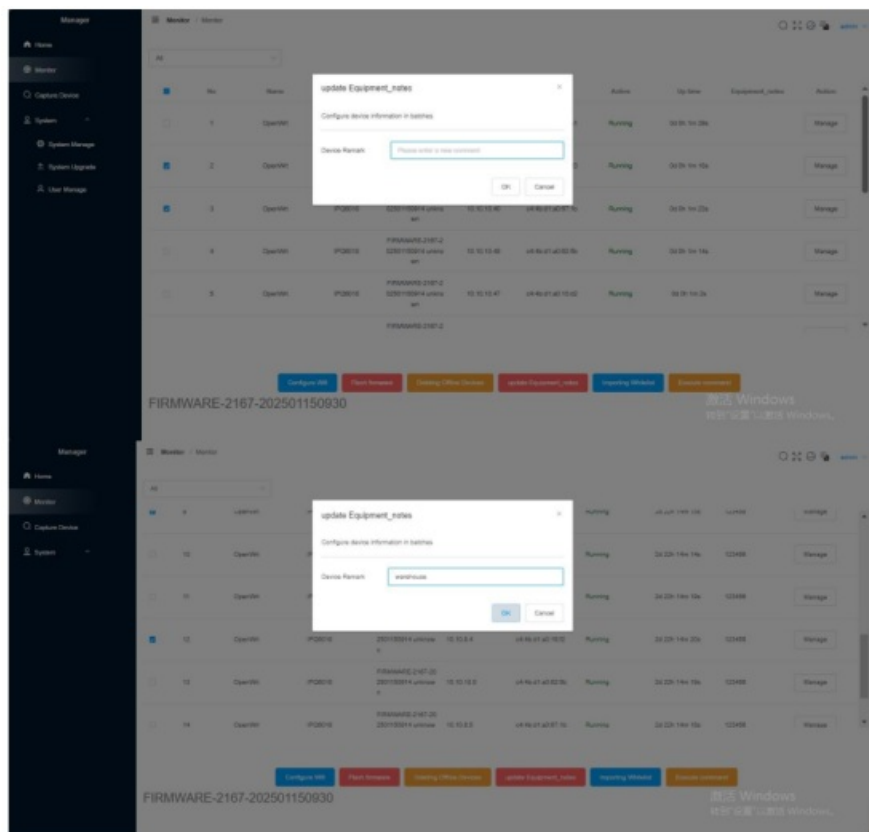
Deleting Offline Devices Successful



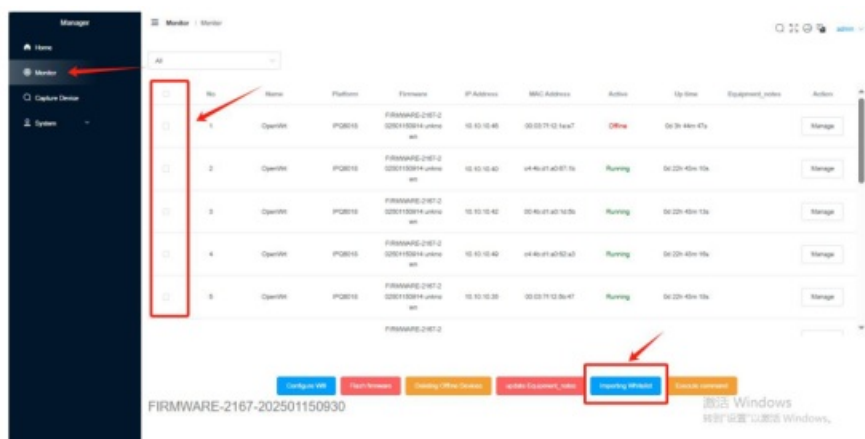
Update Equipment Notes



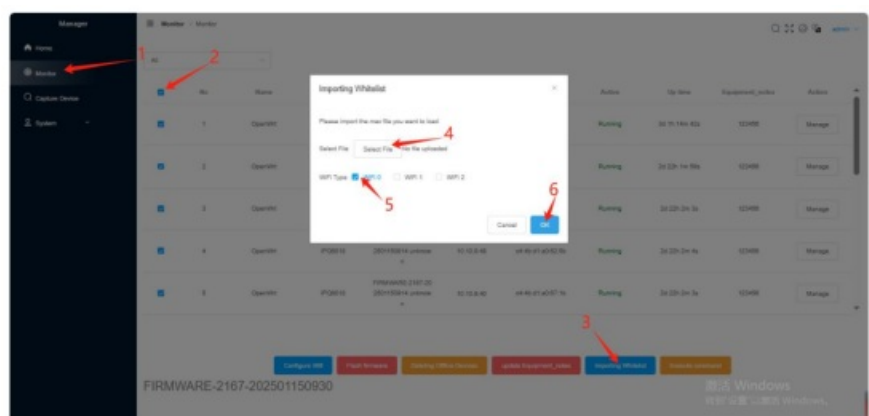
Equipment Notes for Group Management



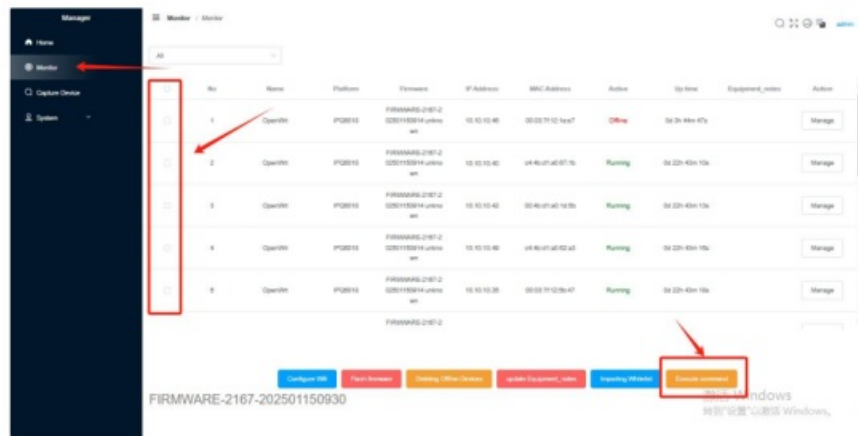
Importing Witelist



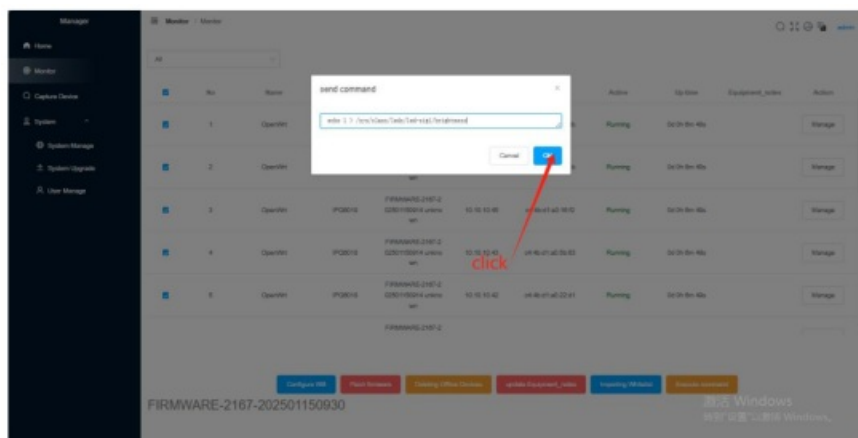
Witelist upload for your AP Devices



Execute Command



Input Command(eg.as picture below)



<https://www.wallytech.com/>

Documents / Resources

	<p>Wallytech Wallys AP Controller Software [pdf] User Guide DR5018, DR5018S, DR6018, DR6018S, DR6018C, Wallys AP Controller Software, AP Controller Software, Software</p>
---	--

References

- [Wallys 802.11ax, wifi 6, IPQ4029,IPQ4019,IPQ6018,IPQ6000.Router board, wireless card.Access Point-Wallys Communications \(Suzhou \) Co., LTD](#)
- [Wallys 802.11ax, wifi 6, IPQ4029,IPQ4019,IPQ6018,IPQ6000.Router board, wireless card.Access Point-Wallys Communications \(Suzhou \) Co., LTD](#)
- [User Manual](#)

Manuals+. Privacy Policy

This website is an independent publication and is neither affiliated with nor endorsed by any of the trademark owners. The "Bluetooth®" word mark and logos are registered trademarks owned by Bluetooth SIG, Inc. The "Wi-Fi®" word mark and logos are registered trademarks owned by the Wi-Fi Alliance. Any use of these marks on this website does not imply any affiliation with or endorsement.