




WALLYS DR8072 V01 Router Board User Manual

[Home](#) » [WALLYS](#) » WALLYS DR8072 V01 Router Board User Manual 



DR8072/DR6018-S – V01 Router Board User Manual

Contents

- [1 DR8072 V01 Router Board](#)
- [2 IPQ807 x UI setting](#)
- [3 DR8072 V01 UART configuration](#)
- [4 Documents / Resources](#)
 - [4.1 References](#)
- [5 Related Posts](#)

DR8072 V01 Router Board

THIS DOCUMENT CONTAINS PROPRIETARY TECHNICAL INFORMATION, WHICH IS THE PROPERTY OF HE WALLYTECH AND SHALL NOT BE DISCLOSED TO OTHERS IN WHOLE OR IN PART, REPRODUCED, COPIED, OR USED AS THE BASIS FOR DESIGN, MANUFACTURING, OR SALE OF APPARATUS WITHOUT WRITTEN PERMISSION OF WALLYTECH.

IPQ807 x UI setting

1. Input the IP 192.168.1.1 and login
2. Input the username “admin” password “password” then press the button “Login”

OpenWrt | OpenWrt Chaos Calmer 15.05.1 unknown | Load: 0.00 0.00 0.00

Authorization Required

Please enter your username and password.

Username

Password

Reset Login

3. Network setting

- IP Setting: setting IP in the path “network->Interfaces->LAN>IPv4 address”
- DHCP setting: DHCP and other protocol setting in the path network-> Interfaces-> LAN->protocol”

OpenWrt | OpenWrt Chaos Calmer 15.05.1 unknown | Load: 0.06 0.02 0.00 | Auto Refresh: on

Status System Services **Network** Logout

Interfaces Wifi Switch Static Routes Diagnostics Firewall Multi-WAN

WAN WANS **LAN**

Interfaces - LAN

On this page you can configure the network interfaces. You can bridge several interfaces by ticking the “bridge interfaces” field and enter the names of several network interfaces separated by spaces. You can also use `[[LAN]]` notation `INTERFACE VLANID (e.g.: +vdo 1)`.

Common Configuration

General Setup Advanced Settings Physical Settings Firewall Settings

Status

Uptime: 0h 22m 52s
MAC-Address: C4:4B:D1:00:81:71
RX: 271.62 KB (2730 Pkts.)
TX: 539.34 KB (2228 Pkts.)
IPv4: 192.168.1.1/24

Protocol Static address

IPv4 address 192.168.1.1

IPv4 netmask 255.255.255.0

IPv4 gateway

IPv4 broadcast

Use custom DNS servers

IPv6 assignment length 60

IPv6 assignment hint

DHCP Server

General Setup Advanced Settings IPv6 Settings

Ignore interface

Start 100

Limit 150

Disable DHCP for this interface.

Lowest leased address as offset from the network address.

Maximum number of leased addresses.

4. Wireless setting

Login the path network->Interfaces->WIFI, Then choose wifi 1, we select the red marked as example, click the button “ Edit ”

SuperWireless | FIRMWARE-2167-202208232026 unknown | Load: 0.00 0.08 0.09 | Auto Refresh: on

Status System **Network** Logout

Interfaces **Wifi** VLANs Diagnostics Firewall Multi-WAN

wifi1: Master "OpenWrt" wifi0: Master "OpenWrt"

Wireless Overview

Generic Atheros 802.11anacax (wifi0)
Channel: 149 (5.745 GHz) | Bitrate: 573 Mbit/s
SSID: OpenWrt | Mode: Master
BSSID: 00:4B:D1:A0:02:0B | Encryption: WPA2 PSK (CCMP)

Generic Atheros 802.11bgnax (wifi1)
Channel: 1 (2.412 GHz) | Bitrate: 286 Mbit/s
SSID: OpenWrt | Mode: Master
BSSID: 00:4B:D1:A0:EE:E7 | Encryption: None

Scan Add

Disable Edit Remove

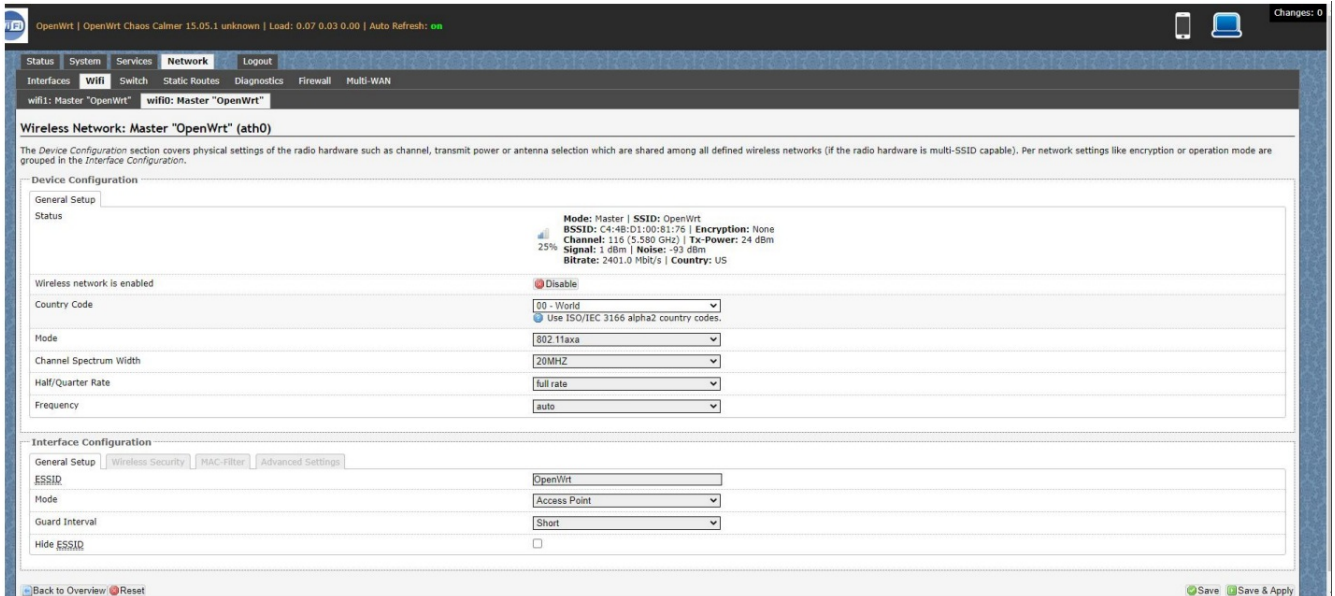
Associated Stations

SSID	MAC-Address	IPv4-Address	Noise	Rssi	RX Rate	TX Rate	TxCCQ	Up Time
No information available								

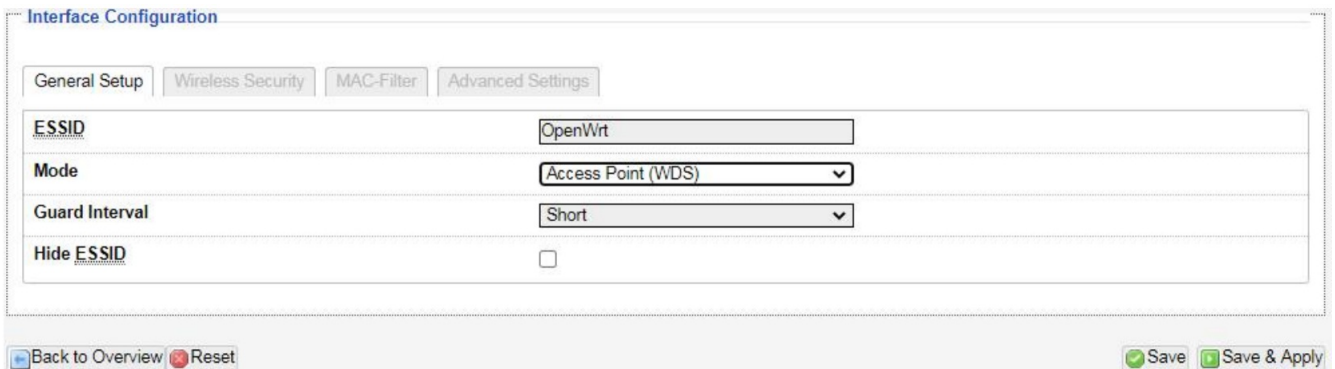
The detail information show in the picture as below:

- Channel: for channel select;
- Transmit Power: signal chain power setting; ESSID:for ID

- Mode: it support 4 mode AP,AP(WDS),client,client(WDS) Wireless
- Security: for Encryption setting



In advance setting you can select which chain do you need,which BW do you need and so on



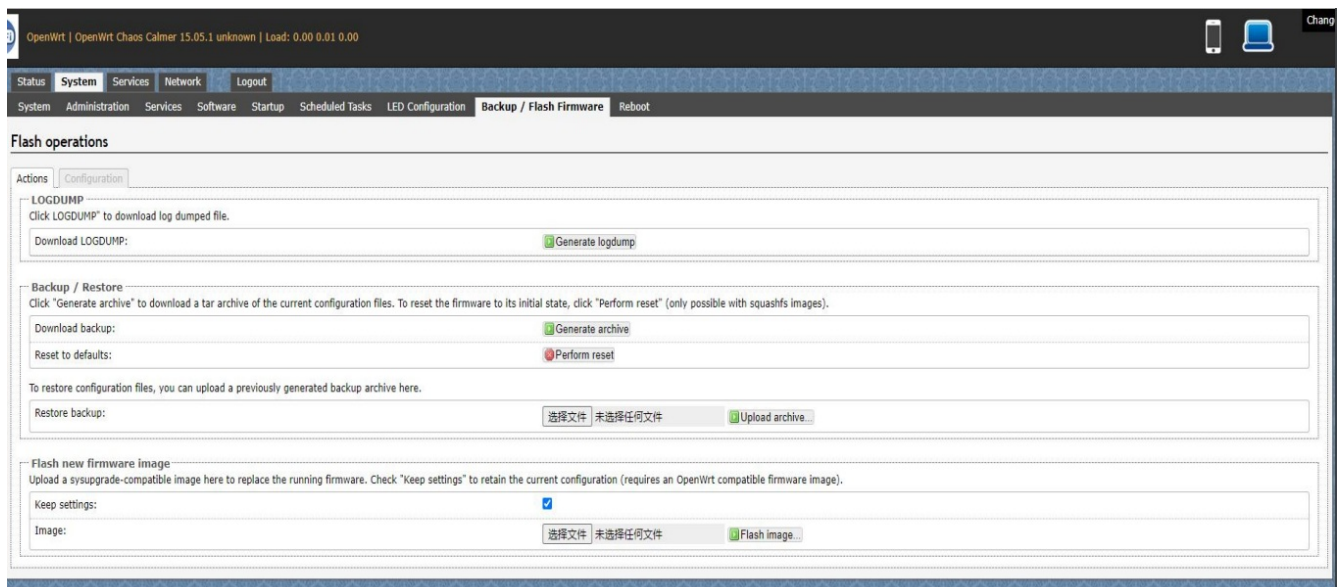
In the end, you need click the button “Save & Apply”, and wait for 2 minutes, then you can enjoy it.

5. Backup archive

Login System->Backup/Flash Firmware;

Then click the button “Generate archive”

Then download the archive



6. Update new image

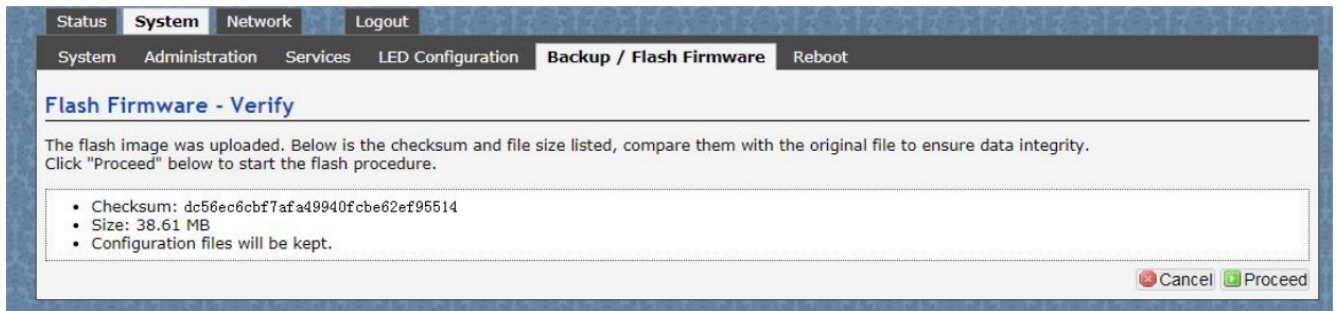
Login System->Backup/Flash Firmware;

Then click the button “ flash image”

Then click the button “Proceed” warning don’t power off wait for about three minutes

Then the system will reboot automatic.

Then login again,you can enjoy it.



7. wireless encryption

Login System->Network/wifi/Edit->Choose 5G radio

Country Code choose “ US ” click the button“Wireless Security”

Then choose “WPA3” and set password

Notice: SAE/SAE PWE/SAE MFP click “ √ ”

StatusSystemNetworkLogout

InterfacesWifiVLANsDiagnosticsFirewallMulti-WAN

wifi1: Master "OpenWrt"wifi0: Master "OpenWrt"

Wireless Network: Master "OpenWrt" (ath0)

The Device Configuration section covers physical settings of the radio hardware such as channel, transmit power or antenna selection which are shared among all defined wireless networks (if the radio hardware is multi-SSID capable). Per network settings like encryption or operation mode are grouped in the *Interface Configuration*.

Device Configuration

General Setup

Status

Mode: Master | SSID: OpenWrt
BSSID: 00:4B:D1:A0:02:0B | Encryption: WPA2 PSK (CCMP)
Channel: 149 (5.745 GHz) | Tx-Power: 25 dBm
Signal: 1 dBm | Noise: -98 dBm
Bitrate: 573.0 Mbit/s | Country: US

Wireless network is enabled

Disable

Country Code

US - United States

Use ISO/IEC 3166 alpha2 country codes.

Mode

802.11axa

Channel Spectrum Width

40MHz

Frequency

auto

Block Dfs Channel list

☒ Block Dfs Channel list

Background ACS scan

☐ Automatically scan and switch to best channel after a period of time, default is 60 seconds

Scan List:

☐ Enable Scan List

☐ 36 (5.180 GHz)☐ 40 (5.200 GHz)☐ 44 (5.220 GHz)☐ 48 (5.240 GHz)
☐ 149 (5.745 GHz)☐ 153 (5.765 GHz)☐ 157 (5.785 GHz)☐ 161 (5.805 GHz)
☐ 165 (5.825 GHz)

Transmit Power

25 dBm (316 mW)

dBm

Interface Configuration

General Setup

Wireless Security

MAC-Filter

Advanced Settings

Encryption

WPA3

SAE

☒

SAE PASSWORD

12345678

SAE PWE

☒

SAE MFP

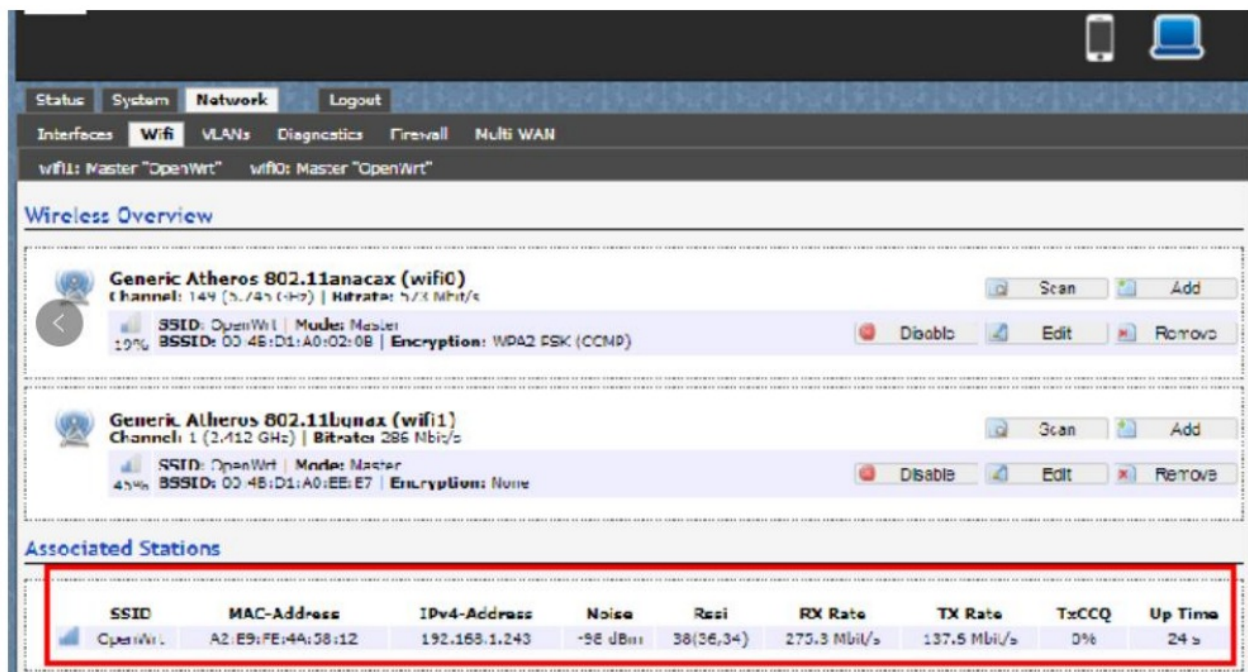
☒

Back to Overview

Reset

Save

Save & Apply



DR8072 V01 UART configuration

1. Introduction

The photo below shows how to use the Uart for DR8072 V01



2. Device connect

Step 1: Connect the cable to the DR8072 V01

As the picture as above, the sequence of the signal in the UART

Connector: GND, TX, RX, VCC, And we need use GND connect black cable, TX connect to white cable, RX connect to Green cable VCC don't use.

Step 2: Check the Com number on the PC

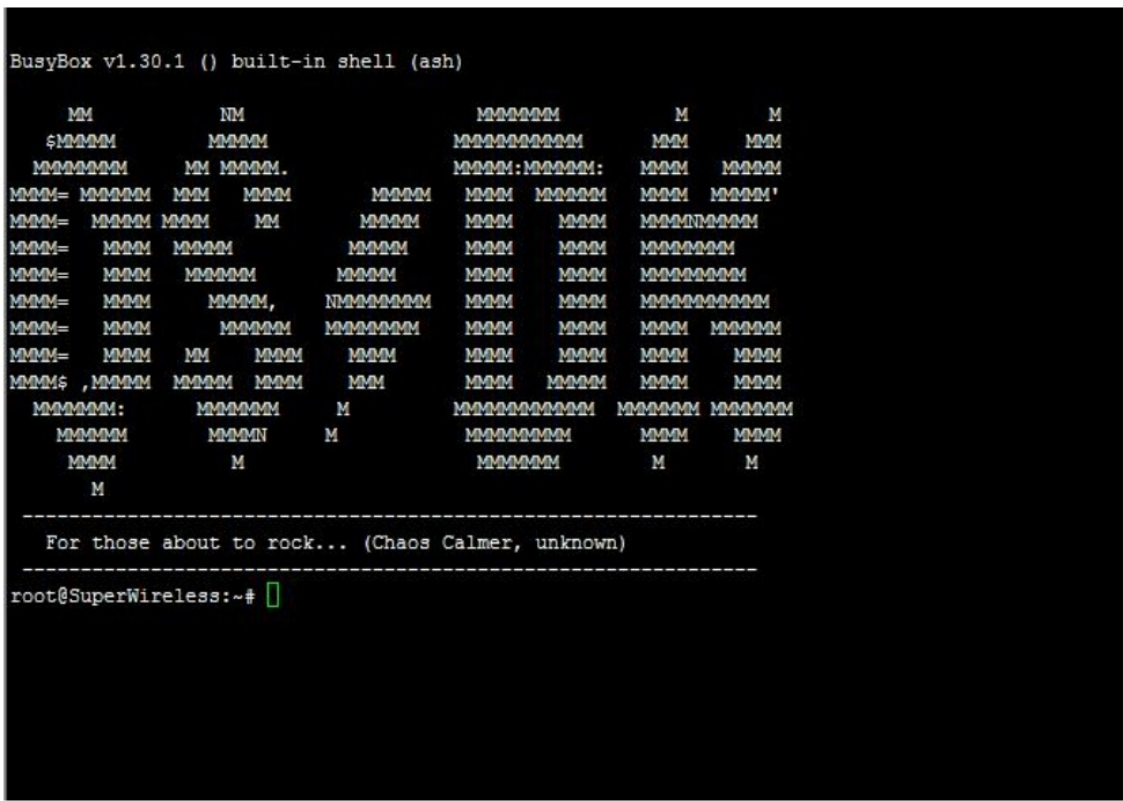
Connect the console board to the PC with USB connector, Then check the com number on the PC,the com number on the test PC is COM15




3. Device connect

Step 3 Login with the software

You can use putty,Xshell or some others,enjoy it.



Documents / Resources

	<p>WALLYS DR8072 V01 Router Board [pdf] User Manual DR6018-S, DR8072 V01, DR8072 V01 Router Board, DR8072 V01, Router Board, Board</p>
---	--

References

- [Wallys 802.11ax, wifi 6, IPQ4029,IPQ4019,IPQ6018,IPQ6000.Router board, wireless card.Access Point.](#)