



# WALLYYS DR8072 V01 Dual Concurrent Embedded board User Manual

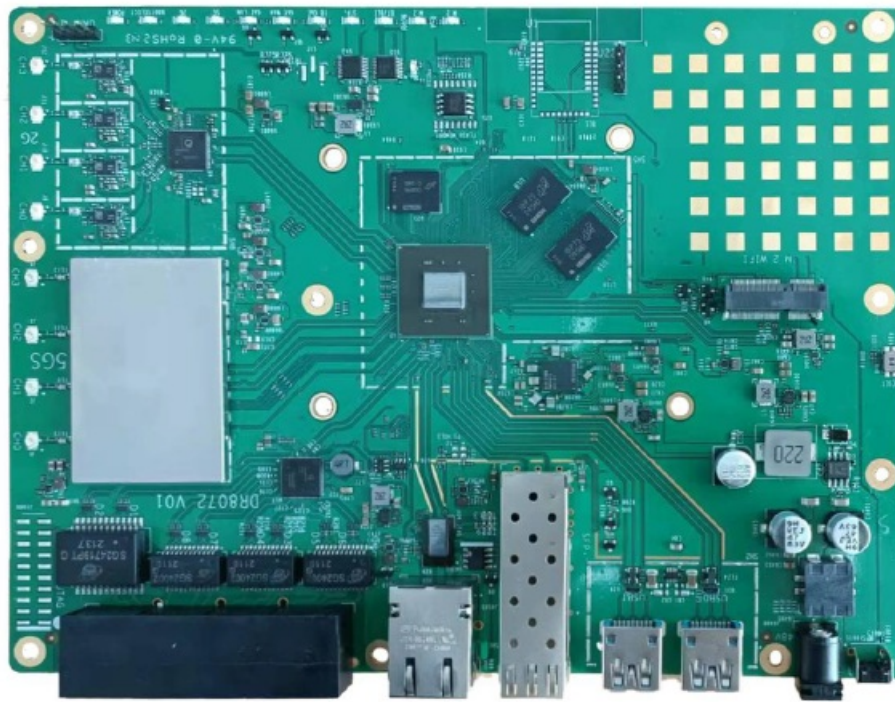
[Home](#) » [WALLYYS](#) » WALLYS DR8072 V01 Dual Concurrent Embedded board User Manual 

## Contents

- [1 WALLYS DR8072 V01 Dual Concurrent Embedded board](#)
- [2 Product Information](#)
- [3 Product Usage Instructions](#)
- [4 Features](#)
- [5 Applications](#)
- [6 Product Description](#)
- [7 Hardware Specifications](#)
- [8 Documents / Resources](#)
  - [8.1 References](#)



**WALLYYS DR8072 V01 Dual Concurrent Embedded board**



## Product Information

<b>Product Name</b>	DR8072 V01
<b>Features</b>	<ul style="list-style-type: none"> <li>• Qualcomm Atheros IPQ8072A AR Quad Core CPU</li> <li>• On-board 5GHz radio, up to 2475Mbps physical data rate</li> <li>• 8 MB NOR Flash, 256MB NAND Flash</li> <li>• On-board 2.4GHz radio, up to 1147Mbps physical data rate</li> <li>• Support 11ax TX Beamforming</li> <li>• Support 11ac/ax MU-MIMO DL and UL</li> <li>• Support OFDMA DL and UL</li> <li>• Support with 4x4/5GHz + 4x4/2.4GHz</li> <li>• Supports Dynamic Frequency Selection (DFS)</li> </ul>
<b>Applications</b>	<ul style="list-style-type: none"> <li>• Dual Band MU-MIMO 802.11g/n/ac/ax</li> <li>• Access Point Wireless application</li> <li>• 4x4MU-MIMO 802.11ax Access Point</li> </ul>
<b>Product Description</b>	DR8072 V01 based on IPQ8072A chipset is an enterprise wireless module integrated with 2x2(4x4) 5G high power Radio module and 4x4 2.4G high power Radio module designed specifically to provide users with mobile access to high-bandwidth video streaming, voice, and data transmission for office and challenging RF environment in factories, warehouses establishment.
<b>Absolute Maximum Rating</b>	<ul style="list-style-type: none"> <li>• Operating Temperature Range: -20°C to +70°C</li> <li>• Storage Temperature Range: -40°C to +90°C</li> <li>• Operating Humidity Range: 5% to +95% (non-condensing)</li> <li>• Storage Humidity Range: 0% to +90% (non-condensing)</li> </ul>

## Product Usage Instructions

To use the DR8072 V01 product, please follow these instructions:

1. Ensure that the product is placed within the specified operating temperature range of -20°C to +70°C.
2. Connect the product to a power source using the provided DC Jack Input Interface.
3. Make sure the LED indicators are powered on.
4. Connect your device(s) to the product using the available Ethernet ports (4 x 1 Gbps Ethernet Port, 1 x 10Gbps Ethernet Port) or the USB 3.0 Port.
5. If required, connect external devices to the MiniPCIe Slot or the 10Gbps SFP.
6. If necessary, perform a wireless reset using the designated Reset Button.
7. Monitor the product's performance using the Serial Port 4 Pin Connector or the JTAG 20 Pin Connector.

For further information and support, please visit <http://www.wallystech.com/>.

## Features

- Qualcomm Atheros IPQ8072A AR Quad Core CPU
- On-board 5GHz radio, up to 2475Mbps physical data rate 8 MB NOR Flash, 256MB NAND Flash
- On-board 2.4GHz radio, up to 1147Mbps physical data rate
- Support 11ax TX Beamforming
- Support 11ac/ax MU-MIMO DL and UL
- Support OFDMA DL and UL
- support with 4×4/5GHz + 4×4/2.4GHz
- Supports Dynamic Frequency Selection (DFS)

## Applications

- Dual Band MU-MIMO 802.11g/n/ac/ax
- Access Point Wireless application
- 4x4MU-MIMO 802.11ax Access Point

## Product Description

DR8072 V01 based on IPQ8072A chipset is an enterprise wireless module integrated with 2×2(4×4) 5G high power Radio module and 4×4 2.4G high power Radio module designed specifically to provide users with mobile access to high-bandwidth video streaming, voice, and data transmission for office and challenging RF environment in factories, warehouses establishment.

## Absolute Maximum Rating

Parameter	Rating	Unit
Operating Temperature Range	-20 to +70	°C
Storage Temperature Range	-40 to +90	°C
Operating Humidity Range	5 to +95 (non-condensing)	%
Storage Humidity Range	0 to +90 (non-condensing)	%

## Hardware Specifications

Symbol	Parameter
CPU	Qualcomm Atheros Quad Core ARM Cortex 64 – bit A53 Processor IPQ8072A 2.2GHz CPU
CPU Frequency	Derived from Qualcomm Atheros AP . HK0 1
System Memory	1x 512MB, DDR4 2400MHz 16- bit interface(RAM can be up to 2GB as optional)
Frequency Range	2.412~2 .472GHz, 5. 150~5 .825GHz
MiniPCle Slot	1x MiniPCle Slot with PCIe 3.0
Modulation Techniques	OFDMA: BPSK, QPSK, 16- QAM, 64- QAM, 256- QAM, 1024 -QAM
Environmental Temperature	Operating: -20 ° C to 70 ° C, Storage: -40 ° C to 90 °C
Flash	NOR Flash: 8 MB NAND Flash: 256MB
Wireless	On- board 4x4 2 .4GHz MU-MIMO OFDMA 802 . 11b/g/n/ax , max 1 7 dBm per chain  On-board 4x4 5GHz MU-MIMO OFDMA 802 . 1 1a/n/ac/ax, max 1 7 dBm per chain  8 x U . FL Connectors
Reset Buttons	1 x S/ W Reset Button
DC Jack Input	1x DC Jack Connector: 12V
Interface	4 x 1 Gbps Ethernet Port, 1x 10 Gbps Ethernet Port 1x 10Gbps SFP  2x USB 3.0 Port  1x JTAG 20 Pin Connector  1 x Serial Port 4 Pin Connector
LED	2 x RGB LED Indicators
Power Consumption	TBD

<http://www.wallystech.com/>



[WALLYS DR8072 V01 Dual Concurrent Embedded board](#) [pdf] User Manual  
DR8072 V01 Dual Concurrent Embedded board, DR8072 V01, Dual Concurrent Embedded board, Concurrent Embedded board, Embedded board

## References

- [Wallys 802.11ax, wifi 6, IPQ4029,IPQ4019,IPQ6018,IPQ6000.Router board, wireless card.Access Point.](#)

Manuals+.