



WALI TC-B4 Security Dummy Camera User Manual

[Home](#) » [WALI](#) » WALI TC-B4 Security Dummy Camera User Manual 

Contents

- [1 WALI TC-B4 Security Dummy Camera](#)
- [2 Supplied Part](#)
- [3 INSTALLATION](#)
- [4 Documents / Resources](#)
 - [4.1 References](#)



WALI TC-B4 Security Dummy Camera



CAUTION

- Powered by AAA battery only, ensure the correct battery polarity, wrong polarity may damage the device.
Please do not use the power adapter.
- A device not installed and used in accordance with the installation manual may damage the device and battery.
- Ensure camera housing is properly tightened.
- Any changes or modifications in the construction of this device will automatically void all warranty

Supplied Part



a
Dummy Camera X1



b
Screw X3

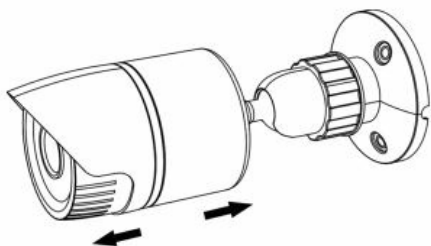


c
Concrete Anchor X3

INSTALLATION

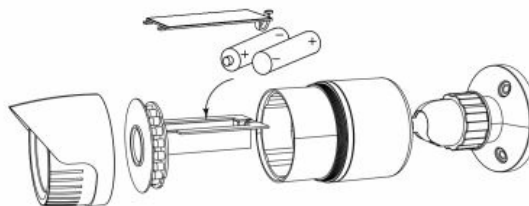
Step 1

Twist open the camera housing to reveal the battery compartment.



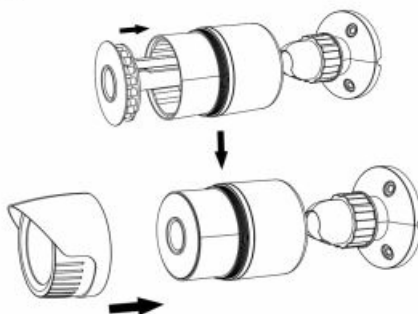
Step 2

Insert 2 x AAA batteries into battery compartment in the right polarity (Battery not included).



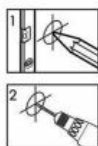
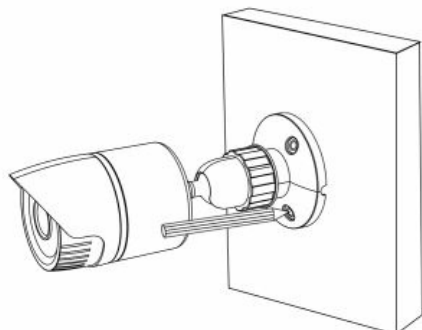
Step 3

Put the battery compartment back to the camera housing and tighten.



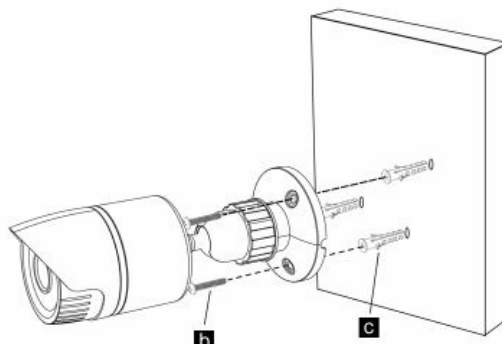
Step 4

Put the bottom holes to designated wall/ceiling position and mark through the hole with your pencil, drill the three holes on wall/ceiling.



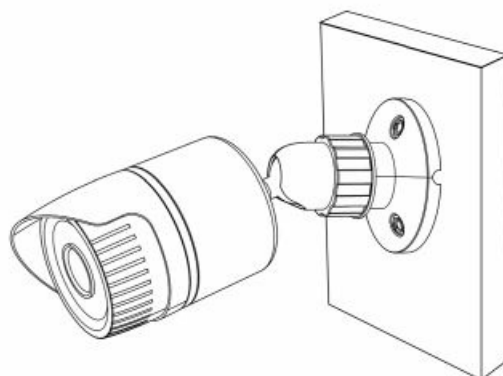
Step 5

Put provided Screw-**b** and Concrete Anchor-**c** (if necessary) into three holes to mount.



Step 6

Adjust the best camera angle and rotate the circular knob mount bracket to tighten for stability.



1. Twist open the camera housing to reveal the battery compartment
2. Insert 2 x AAA batteries into the battery compartment in the right polarity (Battery not included).
3. Put the battery compartment back into the camera housing and tighten it.
4. Put the bottom holes in the designated wall/ceiling position and mark through the hole with your pencil, drill the three holes on the wall/ceiling
5. Put the provided Screw-Gland Concrete Anchor-(if necessary) into three holes to mount.
6. Adjust the best camera angle and rotate the circular knob mount bracket to tighten for stability

Security Dummy Camera
INSTALLATION MANUAL
support@walielectric.com
TC-W1/TC-W2
TC-B4/TC-W4

Documents / Resources

	WALI TC-B4 Security Dummy Camera [pdf] User Manual TC-B4 Security Dummy Camera, TC-B4, Security Dummy Camera, Dummy Camera, Camera
--	---

References

- [User Manual](#)