



WAFERLOCK L310 Smart Lock User Manual

[Home](#) » [WAFERLOCK](#) » WAFERLOCK L310 Smart Lock User Manual 

Contents

- [1 WAFERLOCK L310 Smart Lock](#)
- [2 Specification](#)
- [3 Appearance](#)
- [4 Enroll Programming Card](#)
- [5 Lock Setup with App](#)
- [6 STANDALONE MODE PROGRAMMING INSTRUCTION](#)
- [7 FCC Caution](#)
- [8 Documents / Resources](#)
 - [8.1 References](#)
- [9 Related Posts](#)

WAFERLOCK

WAFERLOCK L310 Smart Lock



Specification

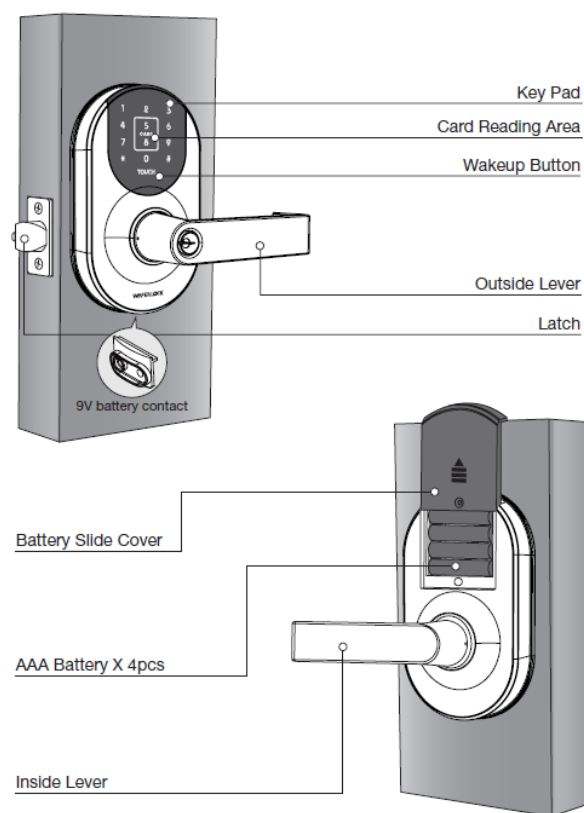
- Front / Back Escutcheon Dimension (L x W x H) :
- 3 7/8" x 1" x 6 2/3" (99.4 x 23.8 x 169.4 mm)

- Access Solutions: Key Card / Passcode / App / Mechanical Key Acoustic Low Power Warning
- Support 9V External Power Supply
- Door Thickness : 1 3/8" – 2" (35mm-50mm)
- Mechanical Key Override
- Transponder : Mifare Cards
- IP54
- Alkaline Battery : (AAA) 1.5V x 4 pcs

Remark

If the product will not be used for more than two months, please remove the battery to avoid battery leakage and damage to the product.

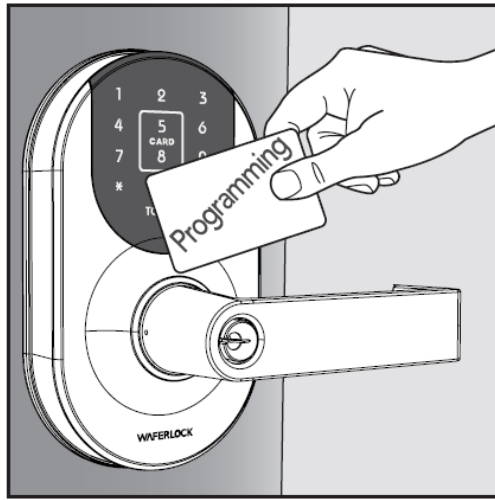
Appearance



Enroll Programming Card

Programming Card must be used first prior to any other steps.

Present the programming card to the reading area. A beep sound and blue light blink in every second during the process, and 1 long beep / blue light blinks 3 times after 10 seconds means the programming card setup is successful.



Remark

- Before enrolling the programming card, L310 is in construction mode and is able to operate by any Mifare card and default passcode 123456.
- If you hear 2 beeps / blue light blinking twice, it means the programming card enrollment failed.
- A lock can be enrolled on one programming card only; the programming card cannot be used to unlock.
- Once the programming card is enrolled successfully, the lock can be operated with authorized credentials and passcode only.

Lock Setup with App

Follow the below steps to get your lock set with an App supported by WAFERKEY. You can also use the mobile App to set up your lock step-by-step and access installation videos.

- **Step 1** Download the App by searching “WAFERKEY” in the App Store (iOS) or on Google Play (Android).
- **Step 2** Open the App, simply use a Third Party Login or register a WAFERKEY account.



- **Step 3** Make sure the lock has been already programmed by the programming card. Turn on Bluetooth on your smartphone, stay near the lock, and follow the instructions in the App.
- **Step 4** Pair the lock in the App and start to use it.

Remark

- The WAFERKEY App works on iPhones with iOS 13.6 or later, or devices with Android 8.0 or later.
- Be sure to accept any available firmware update.
- Please refer to the instructions in the WAFERKEY App for more information.

DON'T WANT TO USE THE APP?

Please go to pages P6-15 for manual programming instructions for Standalone Mode.

Questions about your new lock?

Let us help you!

support@waferlock.com

STANDALONE MODE PROGRAMMING INSTRUCTION

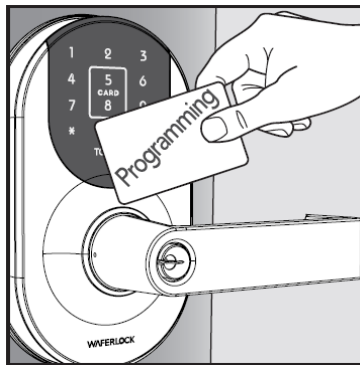
WARNING

Standalone Mode programming functions (Programming Card) are NOT available after the lock is paired with the mobile App! If you would like to use Standalone Mode, please unpair the lock via the WAFERKEY App.

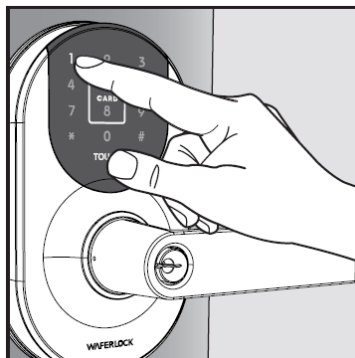
Please remember to enroll in the Programming Card, referring to the instruction on P04.

Enroll New User Credentials

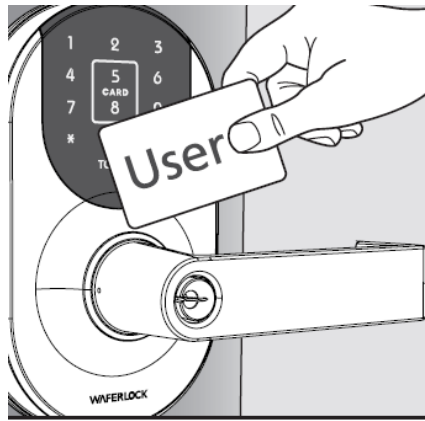
- **Step 1 Present** the programming card to the reading area, numbers 1, 2, and 3 on the keypad will blink with 2 beep sounds.



- **Step 2 Press "1"** to enter the programming mode, and a blue light will blink.



- **Step 3** When the blue light blinks, present the credential to enroll for access. There will be 3 beep sounds if successful.



Remark

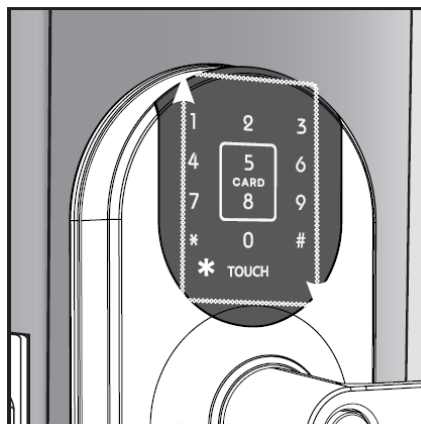
- You could enroll user credentials continuously when the blue light blinks.
- The credentials (including passcode) can be set up to a maximum of 2,000 sets. There will be 10 short beep sounds with blue light blinks 3 times when reaching the maximum number.

Unlock with User Credentials

- **Step 1** Present the user credential to the reading area.



- **Step 2** The keypad LED runs clockwise when access is granted

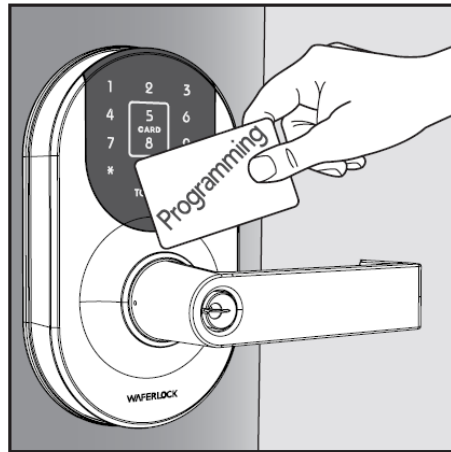


Remark.

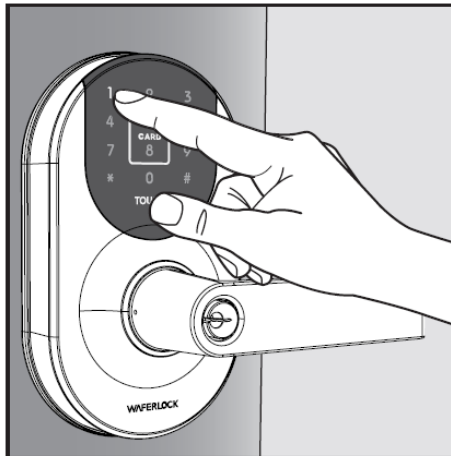
- Remark: When the blue light blinks twice means the user credential has no access right.

Remove All User Credentials

- **Step 1** Present the programming card to the reading area, number 1, 2, and 3 on the keypad will blink with 2 beep sounds.



- **Step 2** Press "1" to enter the programming mode, and a blue light will blink.

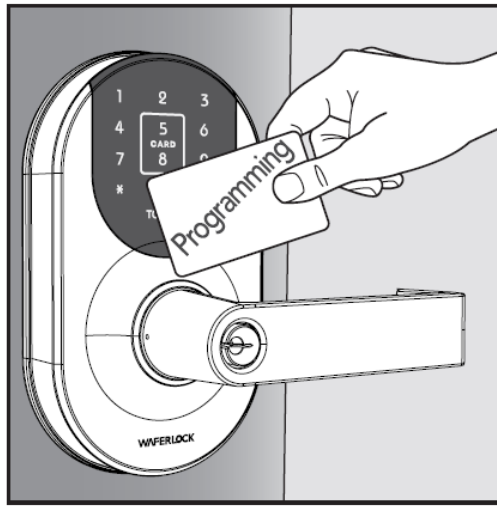


- **Step 3** Press the "TOUCH" key, the keypad lights up, and then press ***#. A long beep sound and blue light will blink 5 times to successfully remove all user credentials.

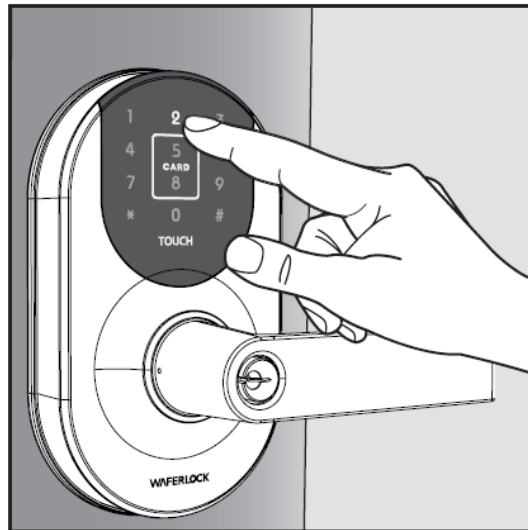


Enroll New Passcode

- **Step 1** Present the programming card to the reading area, number 1, 2, and 3 on the keypad will blink with 2 beep sounds.



- **Step 2** Press “2” to enter the programming mode, and the keypad lights up.



- **Step 3** Key in only 6-digit passcode and press # as end. There will be 3 beeps if successful.



Remark

- To continue enrolling a new passcode, press the “TOUCH” key and repeat step 3.
- The credentials (including passcode) can be set up to a maximum of 2,000 sets. There will be 10 short beep sounds with blue light blinks 3 times when reaching the maximum number.

Unlock with Passcode

- **Step 1** Press the “TOUCH” key and the keypad lights up.



- **Step 2** Key in the 6-digit passcode and press #, the LED will run clockwise when access is granted.

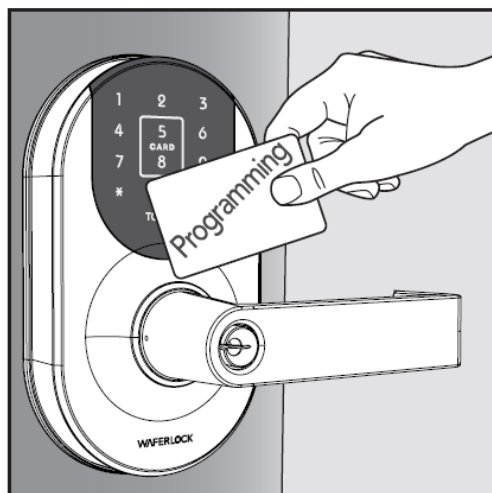


Remark

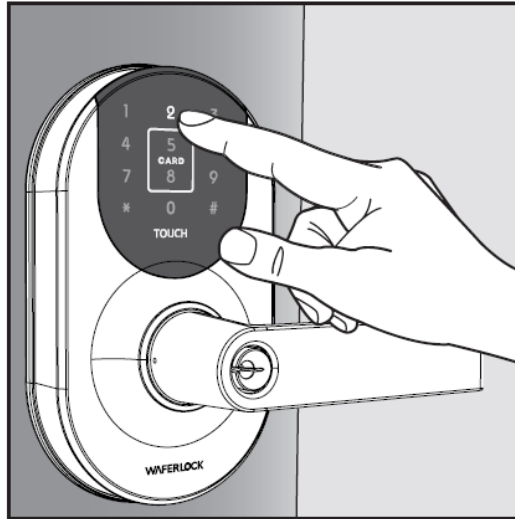
- When blue light blinks twice means the passcode has no access right.
- The keypad will be locked automatically for 3 minutes when a passcode without access rights has been entered 5 times. The keypad will respond again after 3 minutes OR using other user credentials to unlock.
- If the passcode is keyed in incorrectly during the entry, press again "TOUCH" key again to re-enter the 6-digit passcode.

Remove All Passcode

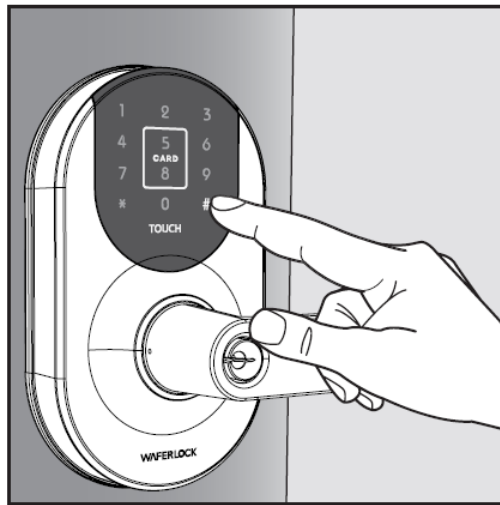
- **Step 1** Present the programming card to the reading area, numbers 1, 2, and 3 on the keypad will blink with 2 beep sounds.



- **Step 2** Press “2” to enter the programming mode, and the keypad lights up.

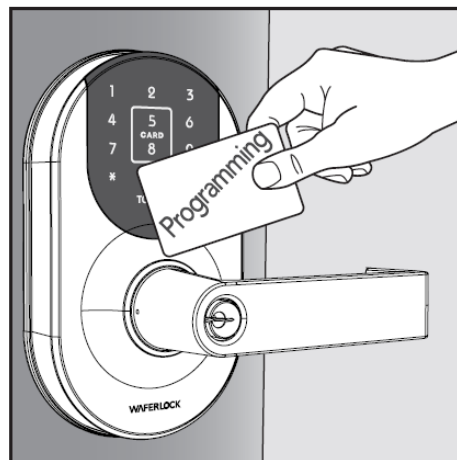


- **Step 3** Press ***#. A long beep sound and blue light will blink 5 times to successfully remove all passcodes.

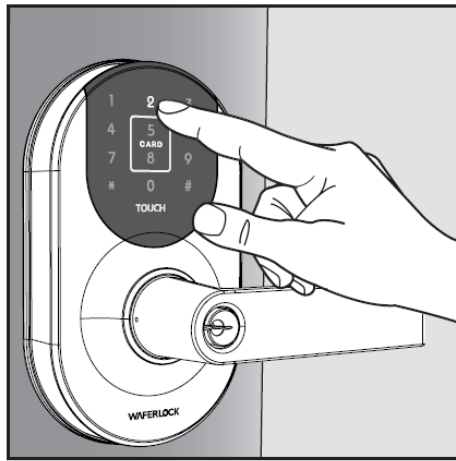


Remove Individual Passcode

- **Step 1** Present the programming card to the reading area, number 1, 2, and 3 on the keypad will blink with 2 beep sounds.



- **Step 2** Press “2” to enter the programming mode, and the keypad lights up.



- **Step 3** Key in the 6-digit passcode you would like to remove, then follow by *#. There will be a long beep sound if successful.

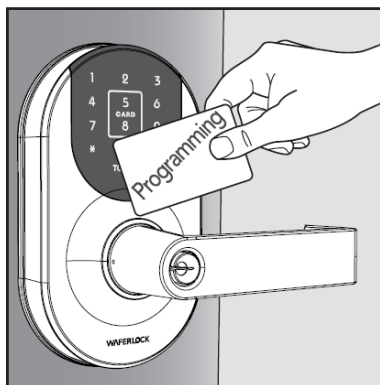


Remark

- When the passcode is incorrect, there will be 4 short beep sounds and blue light will blink twice.
- To continue removing other passcodes, press the "TOUCH" key and repeat step 3.

Volume Setting

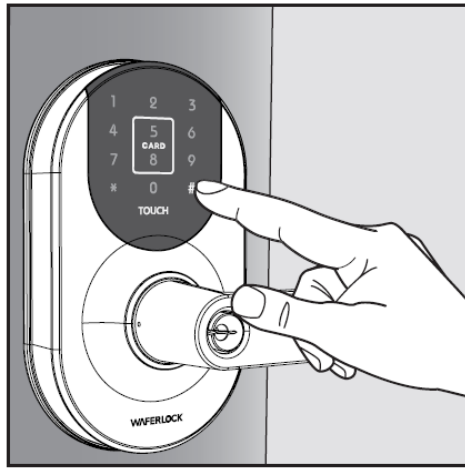
- **Step 1** Present the programming card to the reading area, number 1, 2, and 3 on the keypad will blink with 2 beep sounds.



- **Step 2** Press "2" to enter the programming mode, and the keypad lights up.

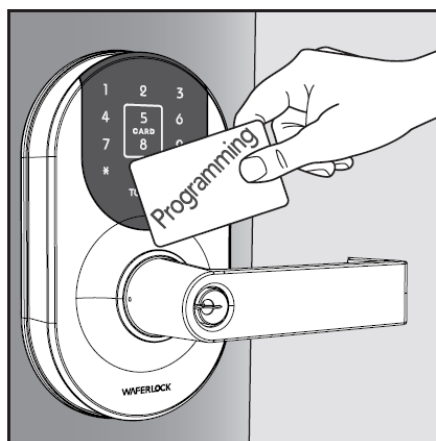


- **Step 3** Press 2#, there will be 2 short beep sounds. Key in 001#, there will be a long beep sound, meaning the lock is in quiet mode. Key in 002#, there will be a long beep sound, meaning the lock is in loud mode.



Program Door Opening and Closing Mode

- **Step 1** Present the programming card to the reading area, number 1, 2, and 3 on the keypad will blink with 2 beep sounds.



- **Step 2** Press "2" to enter the programming mode, and the keypad lights up.



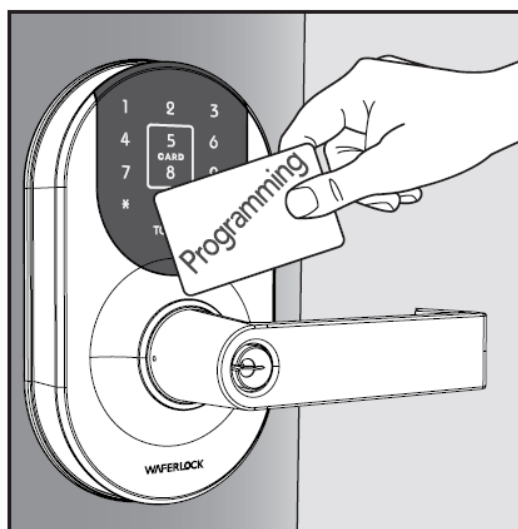
- **Step 3** Press 5#, there will be 2 short beep sounds. Key in 001#, there will be a long beep sound, meaning the door will lock automatically after 5 seconds.

Key in 002#, there will be a long beep sound, meaning the door is under toggle mode.

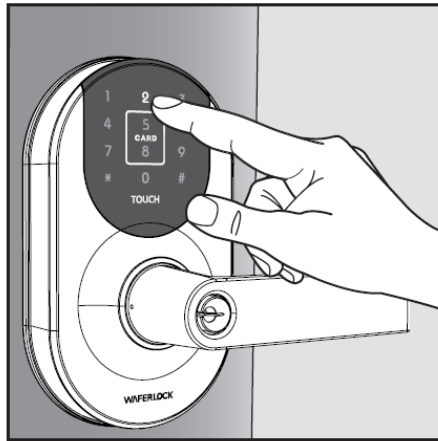


Passcode Anti-Peeping Setup

- **Step 1** Present the programming card to the reading area, number 1, 2, and 3 on the keypad will blink with 2 beep sounds.



- **Step 2** Press "2" to enter the programming mode, and the keypad lights up.

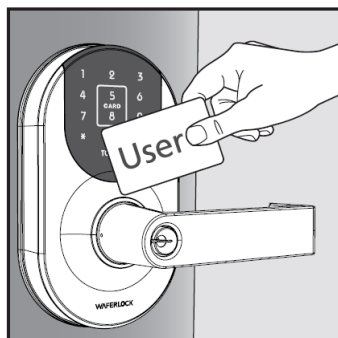


- **Step 3** Press 7#, there will be 2 short beep sounds. Key in 001#, there will be a long beep sound, meaning the passcode anti-peeping mode is OFF. Key in 002#, there will be a long beep sound, meaning the passcode anti-peeping mode is ON.



Low Battery Warning

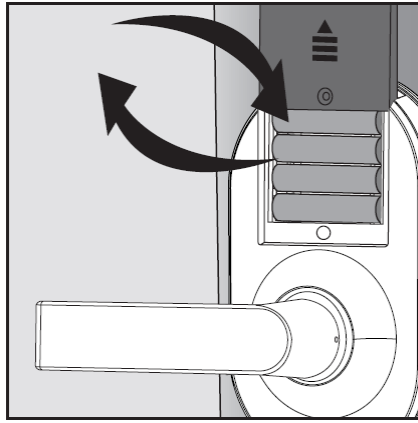
- **Step 1**



OR



- **Step 2** Either when using credentials/passcode / mobile App to unlock or lock the door, or when using the programming card for enrollment, if there is 3 short beep sounds that appear 5 times, and the blue light blinks 5 times, meaning the battery is low. Please change the new battery immediately.



Reminder

1. When the battery is low, credentials/passcodes cannot be added or removed by a programming card.
2. The credentials (including passcode) can be set up to a maximum of 2,000 sets. There will be 10 short beep sounds with blue light blinks 3 times when reaching the maximum number. The lock will be able to enroll new credentials or passcodes after the current credentials and passcode have been removed.
3. The spare mechanical key is recommended to be placed outside the room, ex: in the car or office, to prevent the credentials from being lost or out of battery or electronic failure, you can use the spare key to unlock the door.
4. Please remove the battery to avoid leakage damaging the product if you do not use the product for more than 2 months.
5. This is not a waterproof product, do not splash water or get the product wet, which may cause circuit board damage.
6. When cleaning, do not use water or any cleaning agent to avoid rusting or damaging the finish.
7. Be sure to install the door stop to prevent the handle from slamming from the door slamming.
8. When the door is open, please be careful of the latch, do not touch it with your hands or body to prevent injury.
9. Please keep children away from this product (including batteries and accessories).

Federal Communication Commission Interference Statement

This equipment has been tested and found to comply with the limits for a Class B digital device, pursuant to Part 15 of the FCC Rules. These limits are designed to provide reasonable protection against harmful interference in a residential installation. This equipment generates, uses, and can radiate radio frequency energy and, if not installed and used in accordance with the instructions, may cause harmful interference to radio communications. However, there is no guarantee that interference will not occur in a particular installation. If this equipment does cause harmful interference to radio or television reception, which can be determined by turning the equipment off and on, the user is encouraged to try to correct the interference by one of the following measures:


- Reorient or relocate the receiving antenna.
- Increase the separation between the equipment and the receiver.
- Connect the equipment to an outlet on a circuit different from that to which the receiver is connected.
- Consult the dealer or an experienced radio/TV technician for help.

FCC Caution

To assure continued compliance, any changes or modifications not expressly approved by the party responsible for compliance could void the user's authority to operate this equipment. (Example – use only shielded interface

cables when connecting to computer or peripheral devices). This device complies with Part 15 of the FCC Rules. Operation is subject to the following two conditions: (1) This device may not cause harmful interference, and (2) This device must accept any interference received, including interference that may cause undesired operation.

Documents / Resources

	<p>WAFERLOCK L310 Smart Lock [pdf] User Manual L310 Smart Lock, L310, Smart Lock, Lock</p>
---	--

References

- [W WAFERLOCK | A Leading-brand of Smart Locks from Taiwan](#)
- [User Manual](#)